



HUBER RANCH

**A Conservation Legacy
Protecting Cold Canyon**



View of Lake Berryessa from the Huber Ranch.

The ranch features oak woodlands, a natural spring, and a trail to the top of ridges on both sides of a lush valley. With this purchase by Tuleyome, we will build on our previous conservation purchase of the Headwaters property, which allowed for construction of Annie's Trail.

We have to complete the purchase by October, 2018. Your support is critical!

Please send your donations to:

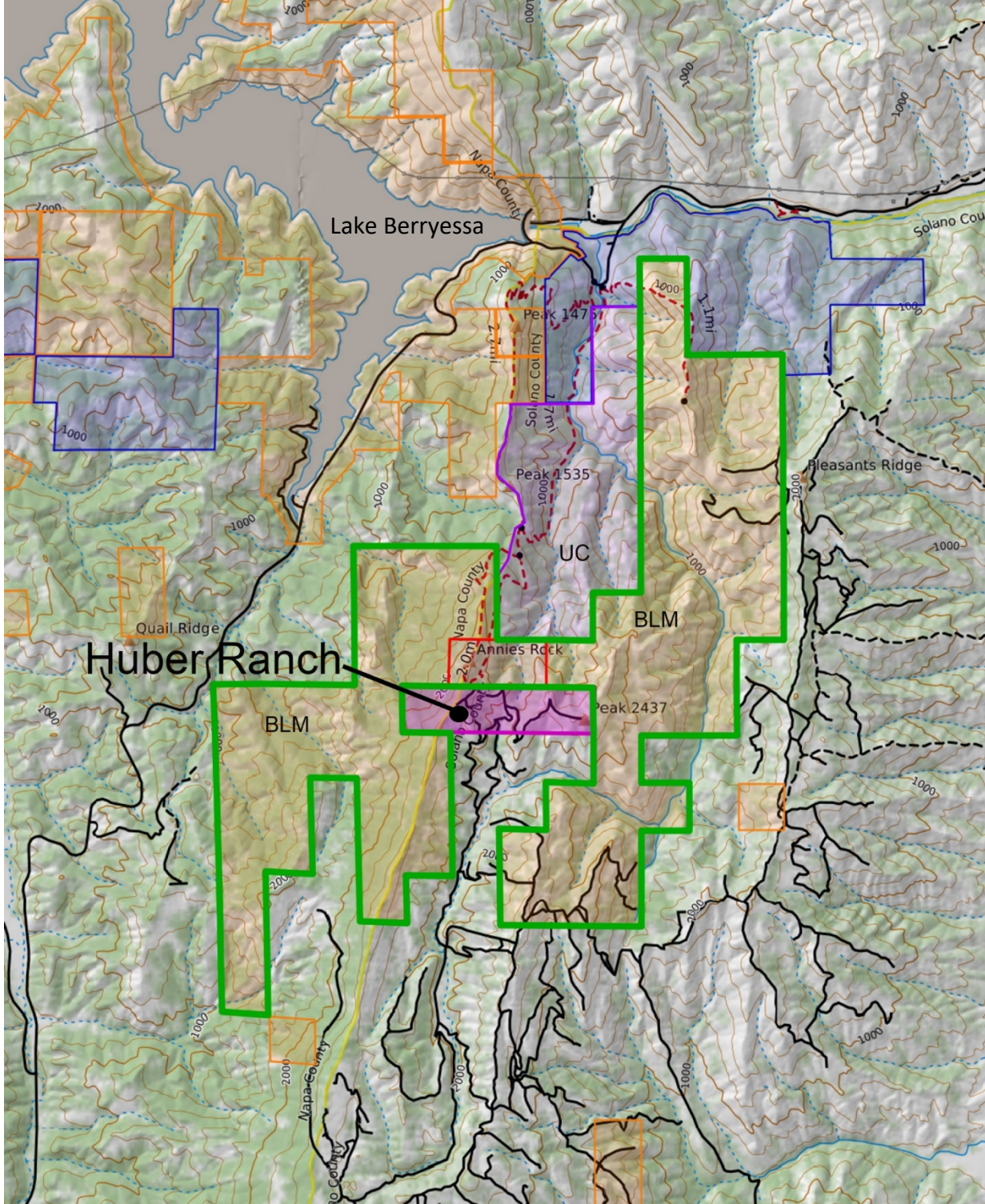
**Tuleyome
607 North St.
Woodland, CA
95695**

The Huber Ranch is 160-acres of gorgeous mountains and ridges, located at the top of Cold Canyon and Wildhorse Canyon, with 360-degree vistas of Lake Berryessa and the Central Valley. We have the opportunity to purchase the ranch, protecting the land and providing for extension of public access from Cold Canyon's trail system.

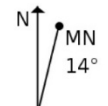


View of the ranch summit (center) from Pleasants Ridge.

Or donate online at:
www.tuleyome.org



Mercator Projection
 WGS84
 USNG Zone 10SEH



Adjacent to the Berryessa Snow Mountain National Monument, and surrounded on three sides by public and preserved lands, the Huber Ranch will add critical protection to the Cold Canyon and Wildhorse Canyon headwaters.

Spanning ridge to ridge, purchase of the 160-acre ranch will protect this wild landscape and allow for public enjoyment in perpetuity.

We have to complete the purchase by October, 2018. Your support is critical!

Please send your donations to:

Tuleyome
607 North St.
Woodland, CA
95695

Or donate online at:
www.tuleyome.org



View of the ranch from Winters and Hwy. 128.

Supported by and partnering with:

- California Wildlife Foundation
- UC Stebbins Cold Canyon Natural Reserve
- Sierra Club Yolano Group

