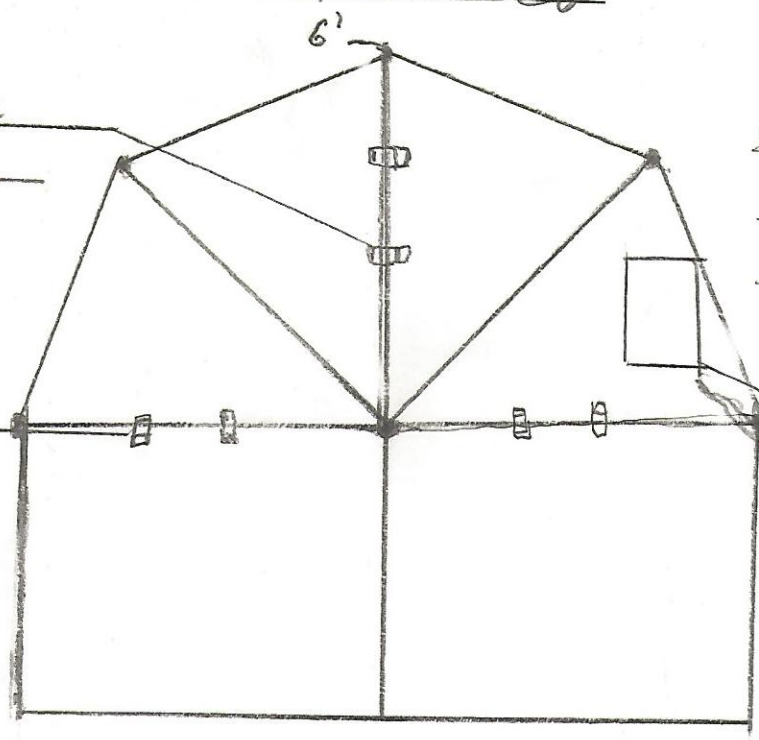


"Little Boy"
outside view

Latches to split the dome and work

Can be powered by Wind, solar, or Standard power



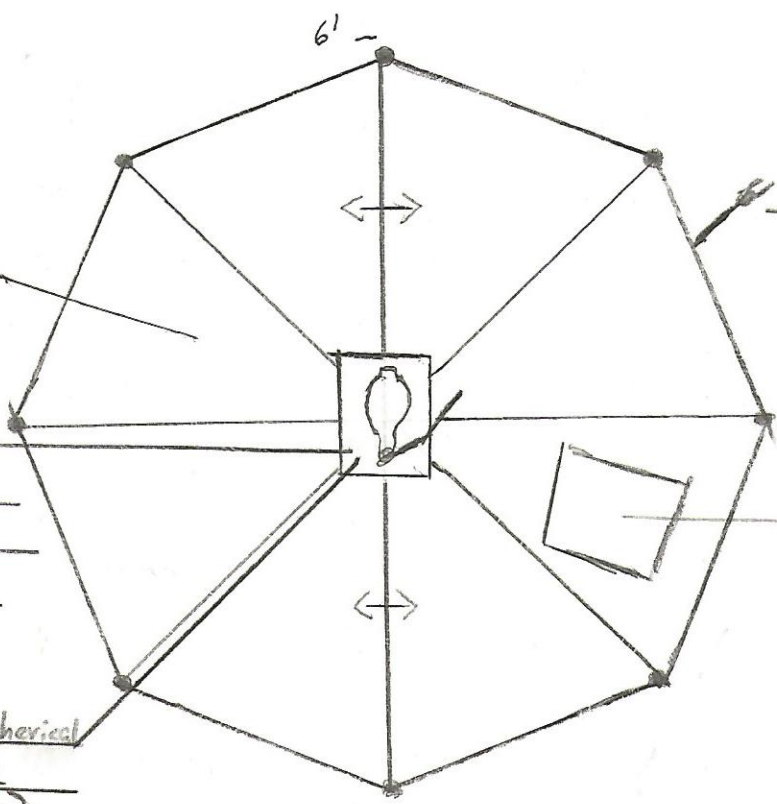
Latches from top to bottom

Inside top with light

Inside coated with Mylar

Light power

Metal halide bulb attached at one side then placed together it is centered.



The Mylar coating and spherical shape make a parabolic tor. (Fresnel lens)