



Eclipse Foundation

Mike Milinkovich
Executive Director
Eclipse Foundation
@mmilinkov

January, 2013

Eclipse History



- Launched by IBM in 2001
 - Initial release of the Eclipse technology platform (Platform, JDT,PDT)
 - Founding consortium board comprised Borland, IBM, Red Hat.....
- Eclipse Foundation formed in 2004
 - Independent not-for-profit organization formed in 2004
 - Definition of bylaws, membership model, initial IP process
- Eclipse Foundation today
 - Members include IBM, Oracle, SAP, CA, Google, Cisco, Ericsson, Airbus, etc.
 - 187 members, (11 strategic members), ~1000 committers
 - ~250 Open Source Projects

Eclipse at a Glance



- **Organization:**
 - 501(c)6 not-for-profit, USA (Delaware) incorporated, headquarters in Ottawa, Canada
- **License:**
 - Eclipse Public License is the default
 - Other licenses possible by approval of the Board
- **Focus areas:**
 - Most project implementations are in Java, but starting to move into web (JavaScript) and C/C++
 - “Eclipse plug-in model”
 - Development tools, modeling tools, runtimes, web development

Eclipse's Secret Sauce



- Eclipse is the industry's best model for vendor-neutral collaboration on innovation
- Industry collaboration requires:
 - Licensing model for sharing co-developed innovation
 - IP management to maximize commercialization opportunities
 - Project model for coordinating investments and activities
 - Governance model to ensure a level playing field for all participants

Eclipse gives you these “out of the box”

Eclipse: a vibrant open source community



“Eclipse is an **open source community** focused on developing a **development platform** of **runtimes, frameworks** and **exemplary tools** that make it easy and cost-effective to build and deploy software solutions.”

Eclipse: a vibrant open source community



open source community
development platform
runtimes, frameworks **exemplary tools**

Eclipse: a sustainable eco-system



“Eclipse is a **vendor-neutral consortium** of major software vendors, solution providers, corporations, educational and research institutions and individuals working together to create a **sustainable eco-system** that enhances, promotes and cultivates the Eclipse open platform with complementary products, services and capabilities.”

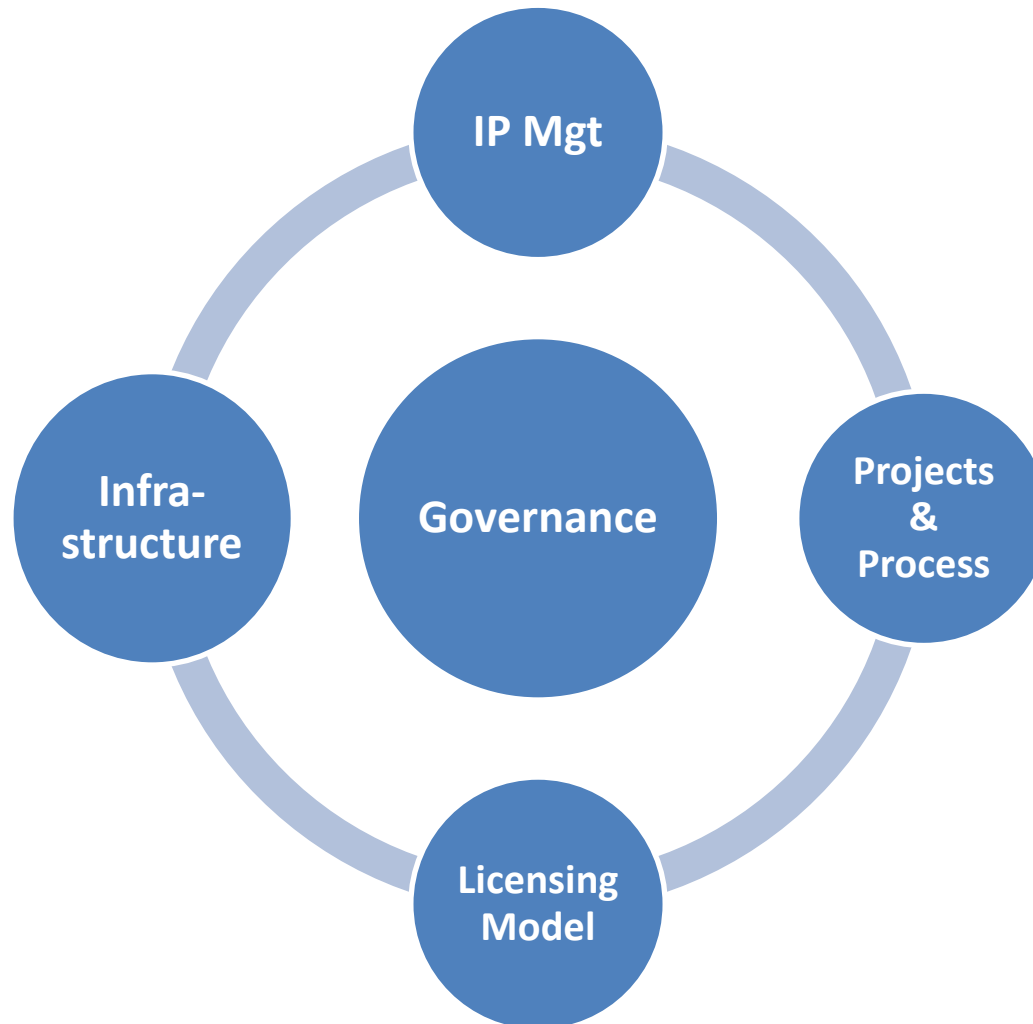
Eclipse: a sustainable eco-system



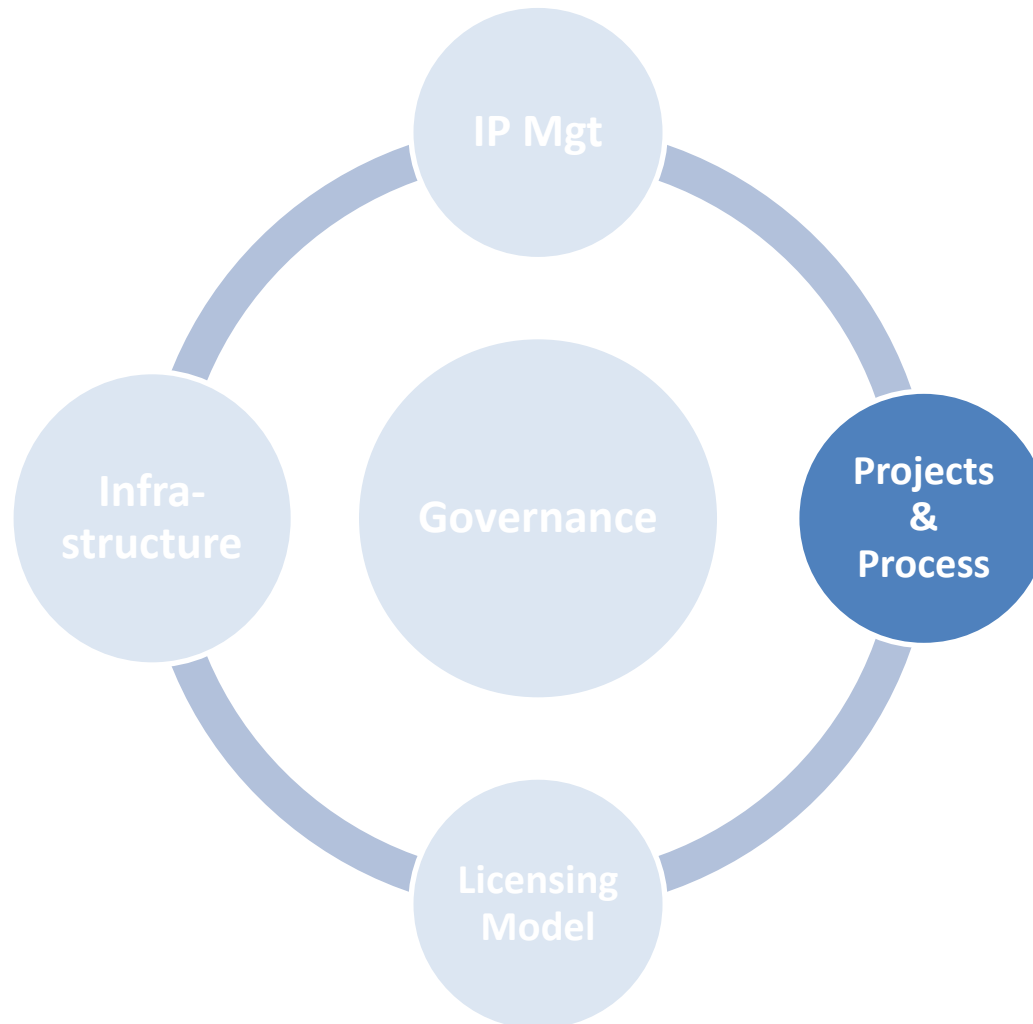
vendor-neutral consortium

sustainable eco-system

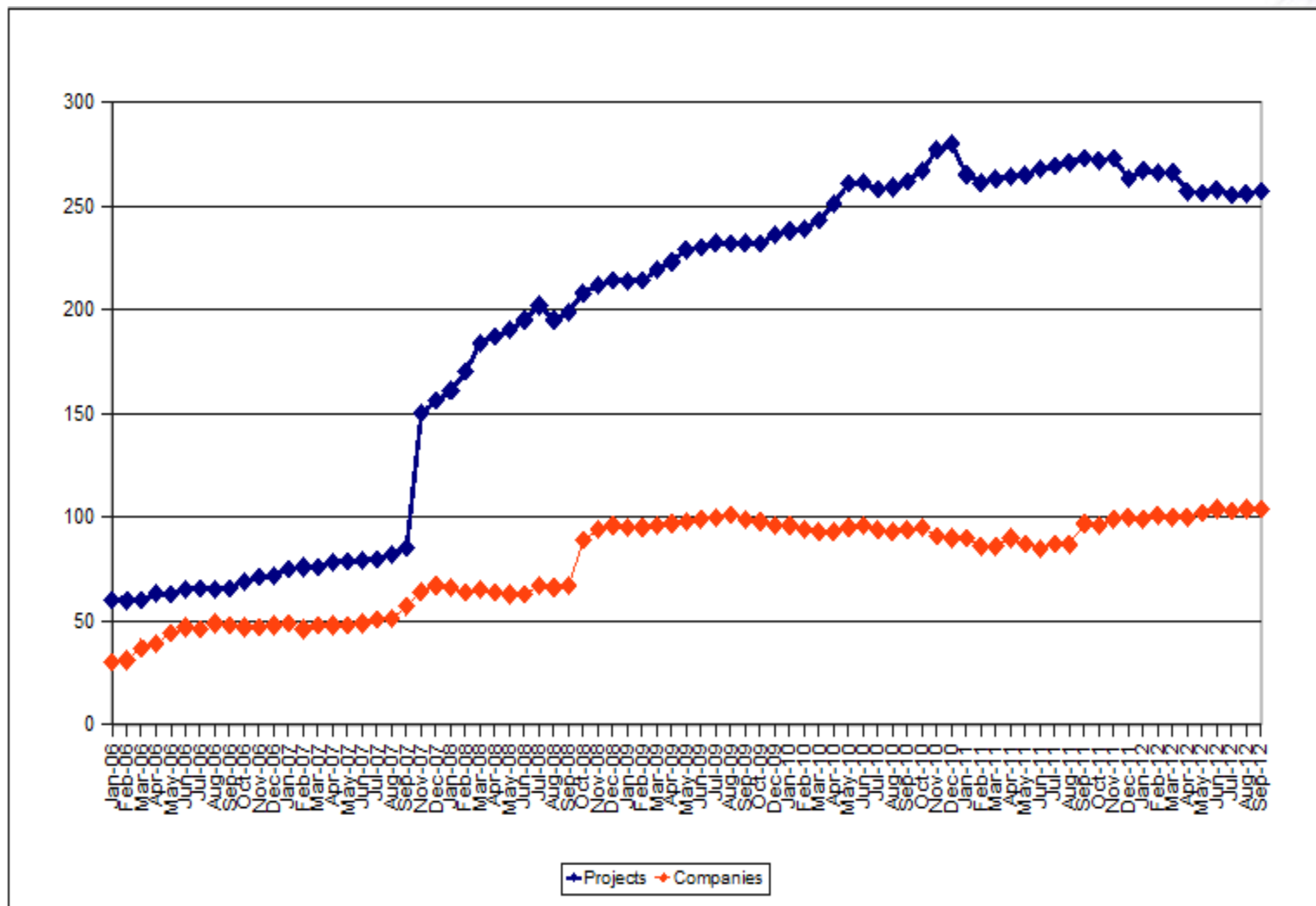
Foundation Services

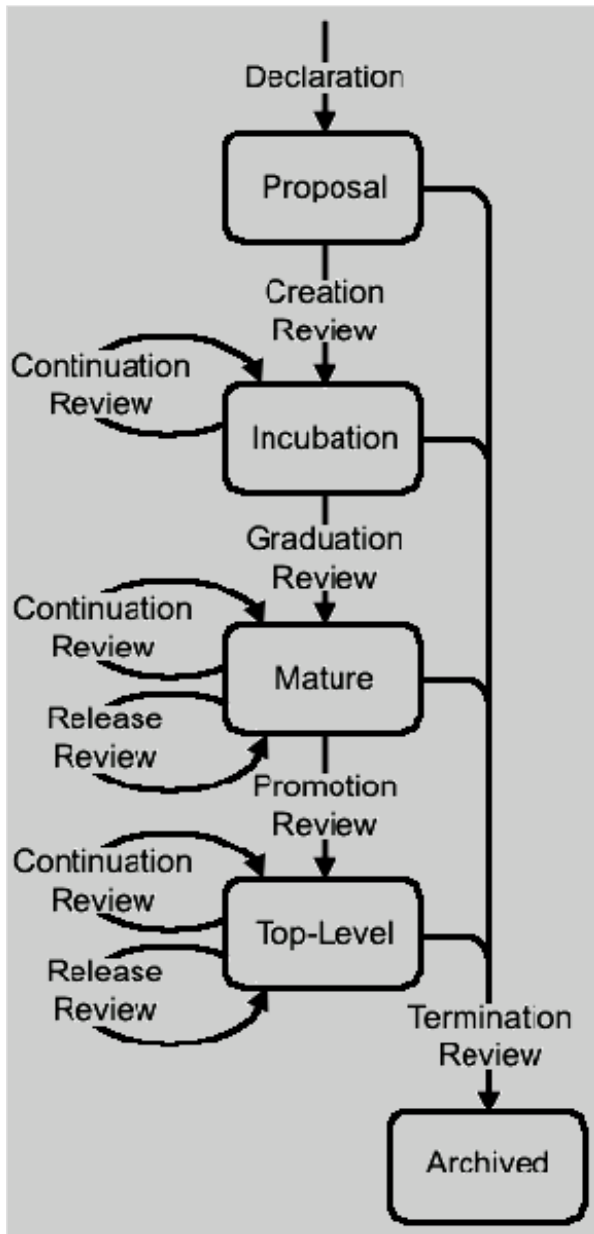


Foundation Services



Project Metrics





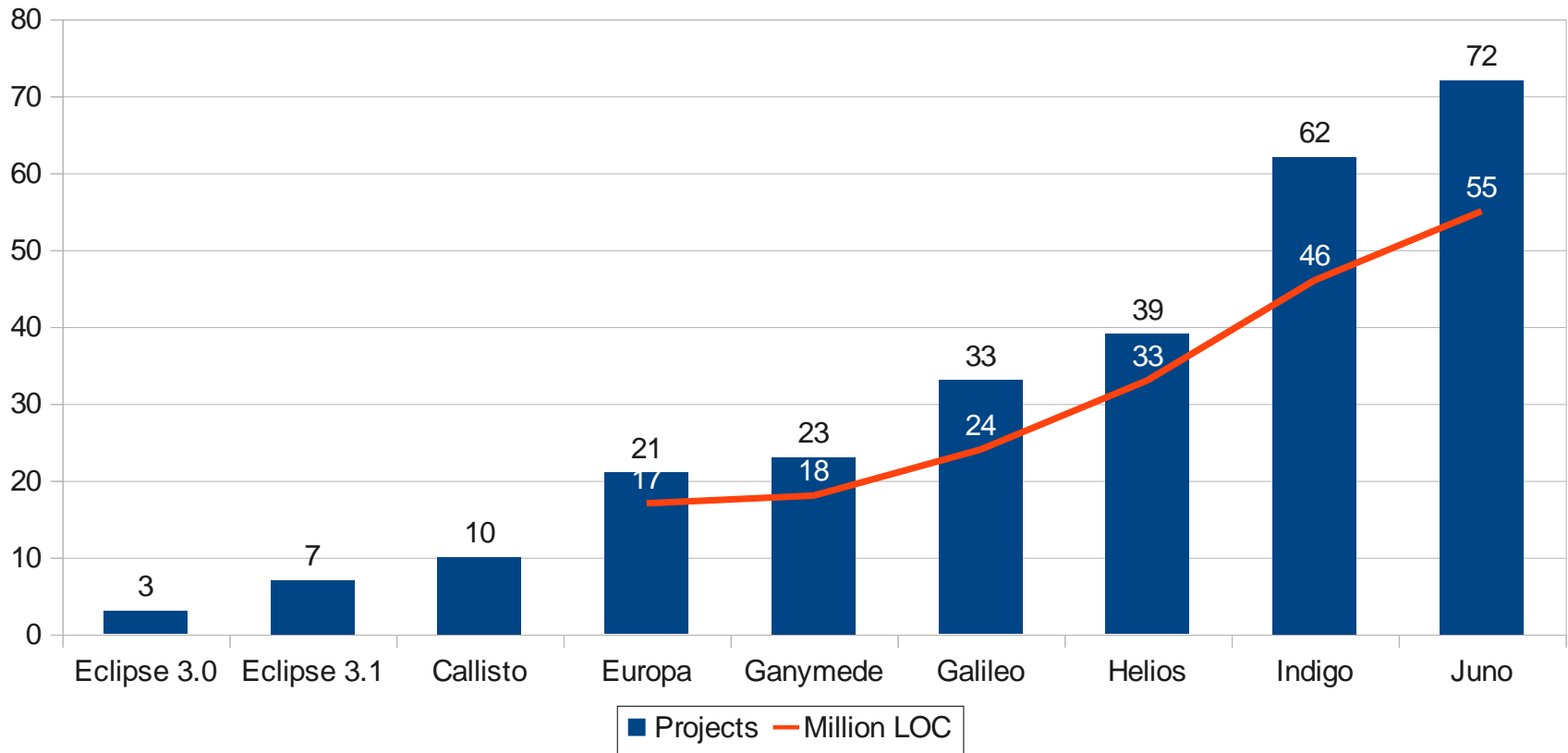
The Project Lifecycle

Technology Agnostic

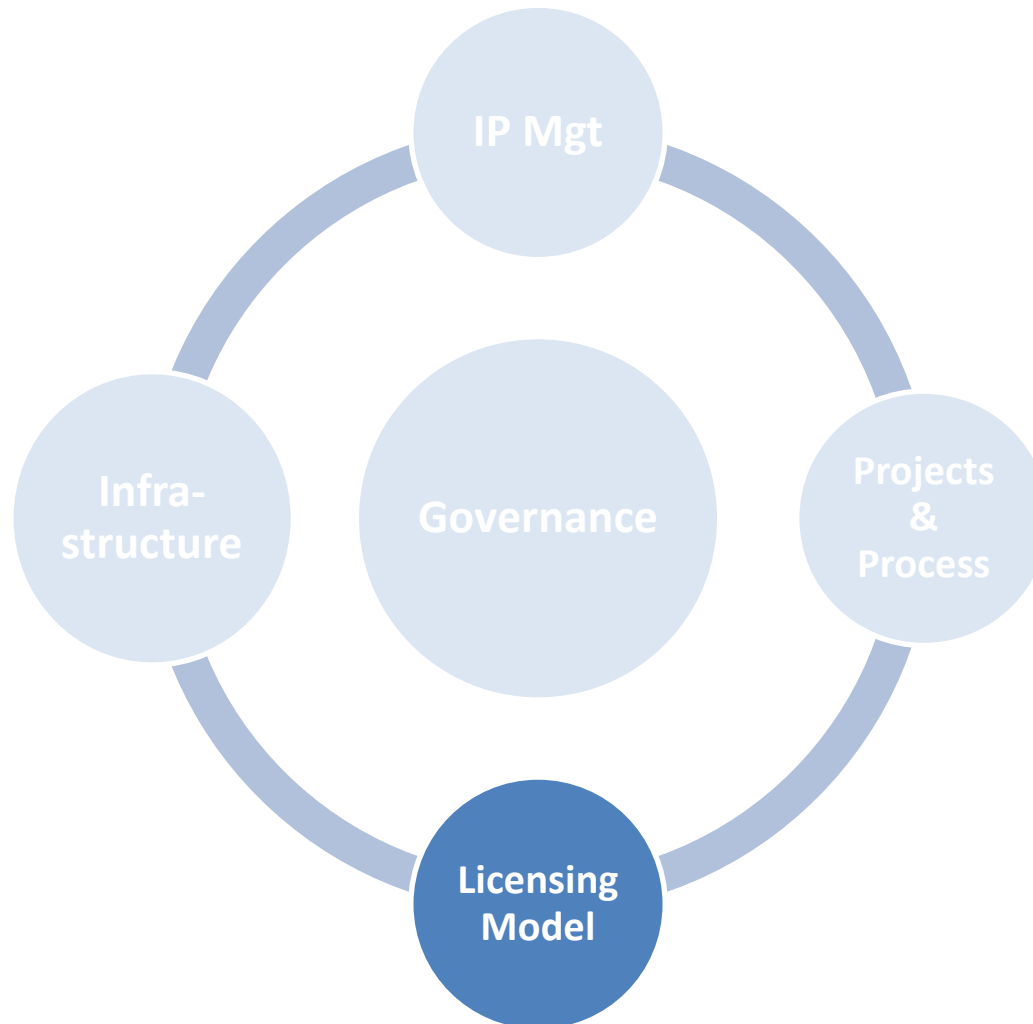


- **Definition of an Eclipse Project:**
 - The project will conform to the Eclipse Development Process
 - The project will conform to the Eclipse Intellectual Property Policies and its related procedures
 - The project will be licensed under the Eclipse Public License unless otherwise and unanimously approved by the Board.
- There is no requirement that Eclipse projects must utilize the Java language or OSGi modularity (plug-in) model.

Predictability



Foundation Services



Eclipse Public License



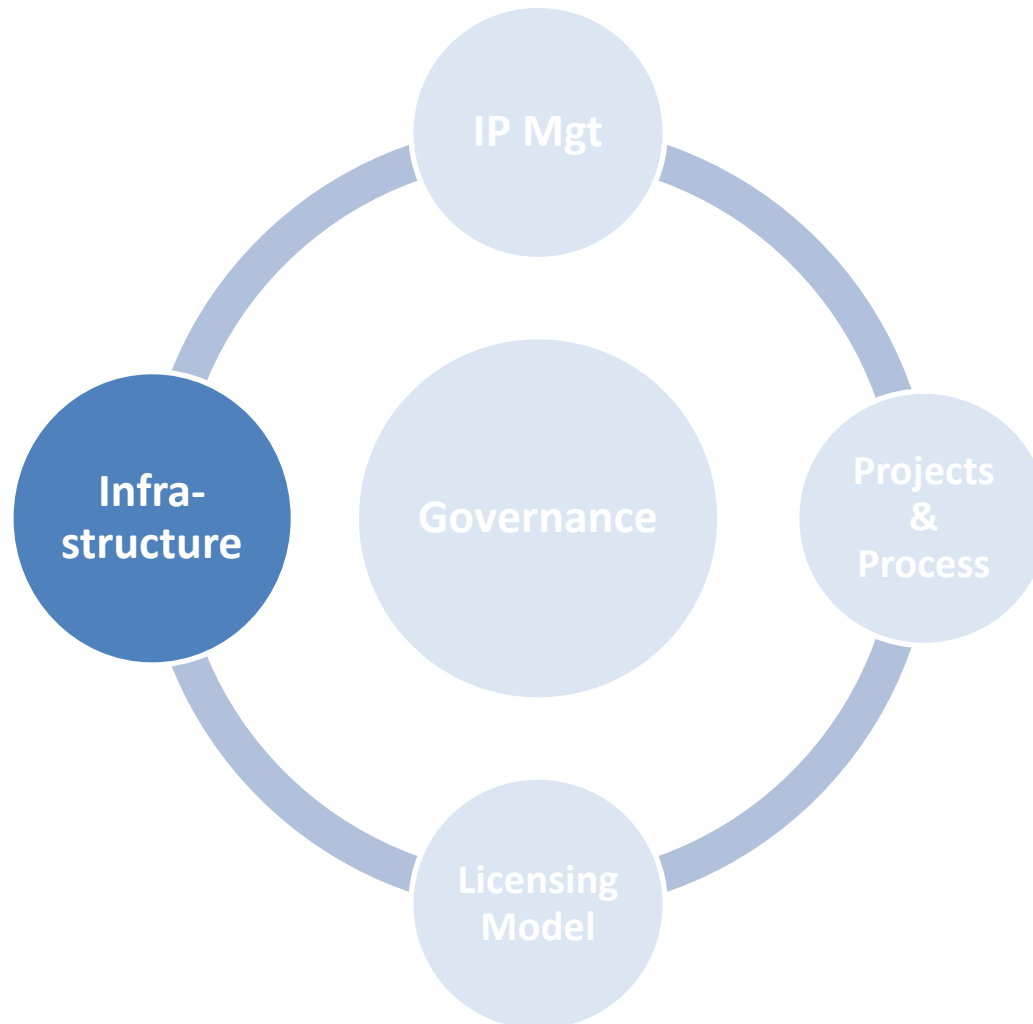
- Default license for all Eclipse projects
- OSI certified as an open source license
- The most commercially friendly weak copyleft license
 - Allows commercial re-licensing of binaries
 - Modern patent license, with reasonable termination clause in event of litigation

Licensing Flexibility



- With the approval of the Board, Eclipse projects can be licensed under different terms than the EPL
- Most common scenario is EPL + BSD(3-clause)
 - We have our own named EDL (Eclipse Distribution License)
 - Used by 8 projects including Orion, Lyo, EclipseLink and EGit.
- Jetty and Gemini are dual-licensed EPL+ALv2
- JGit is EDL only

Foundation Services



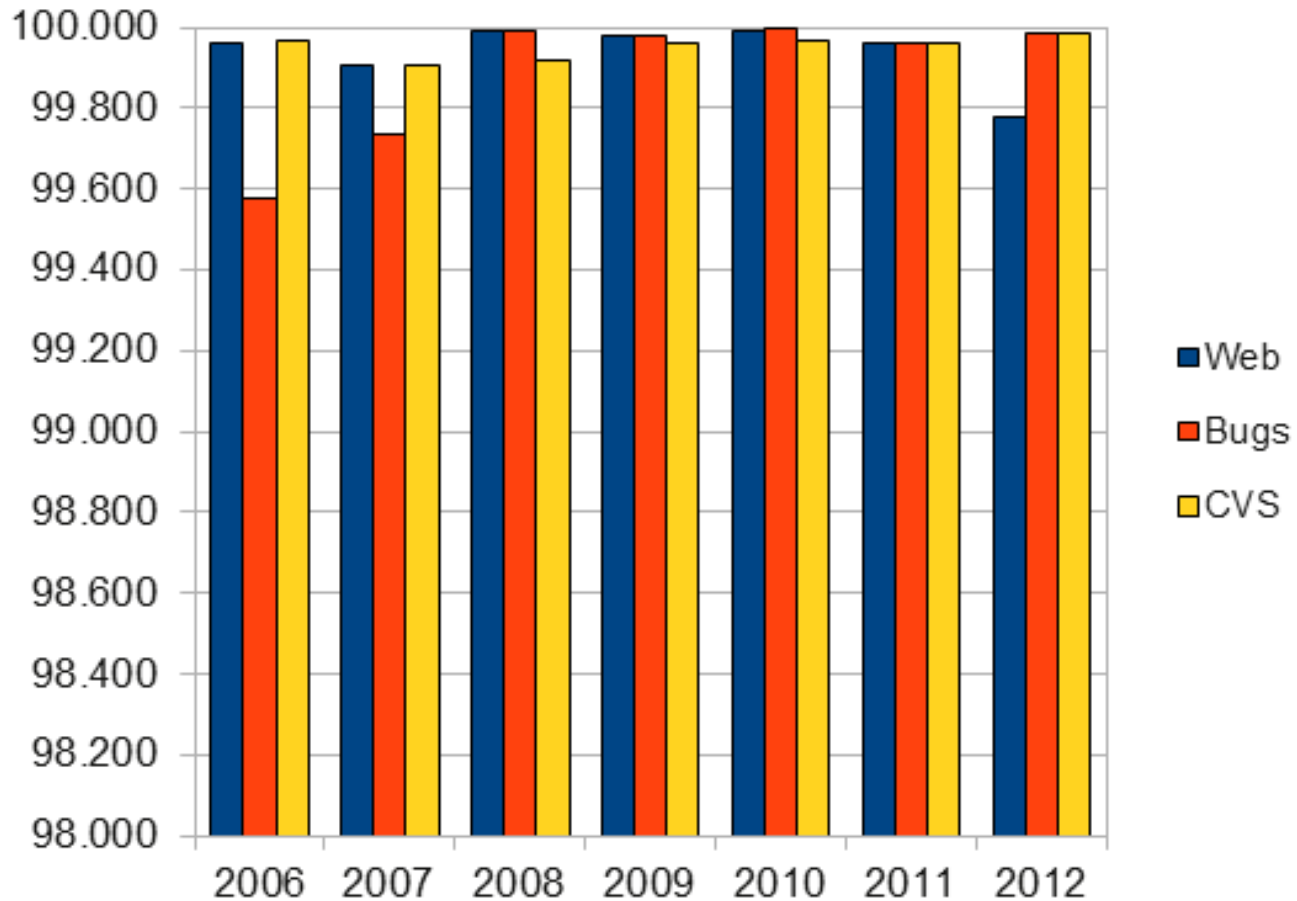
Downloads



DOWNLOADS PAGE DOWNLOAD REQUESTS PER MONTH

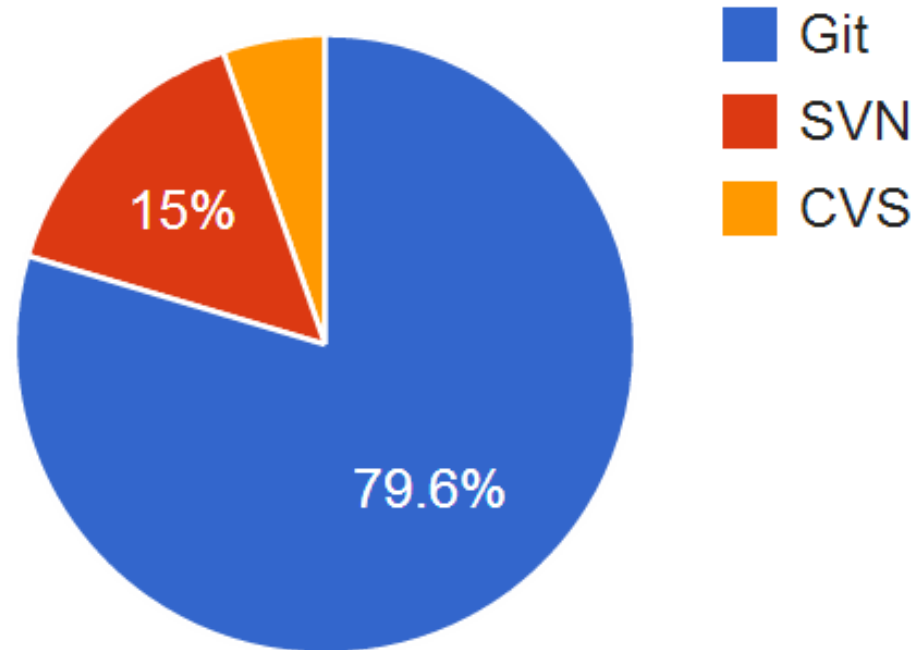


Infrastructure Uptime



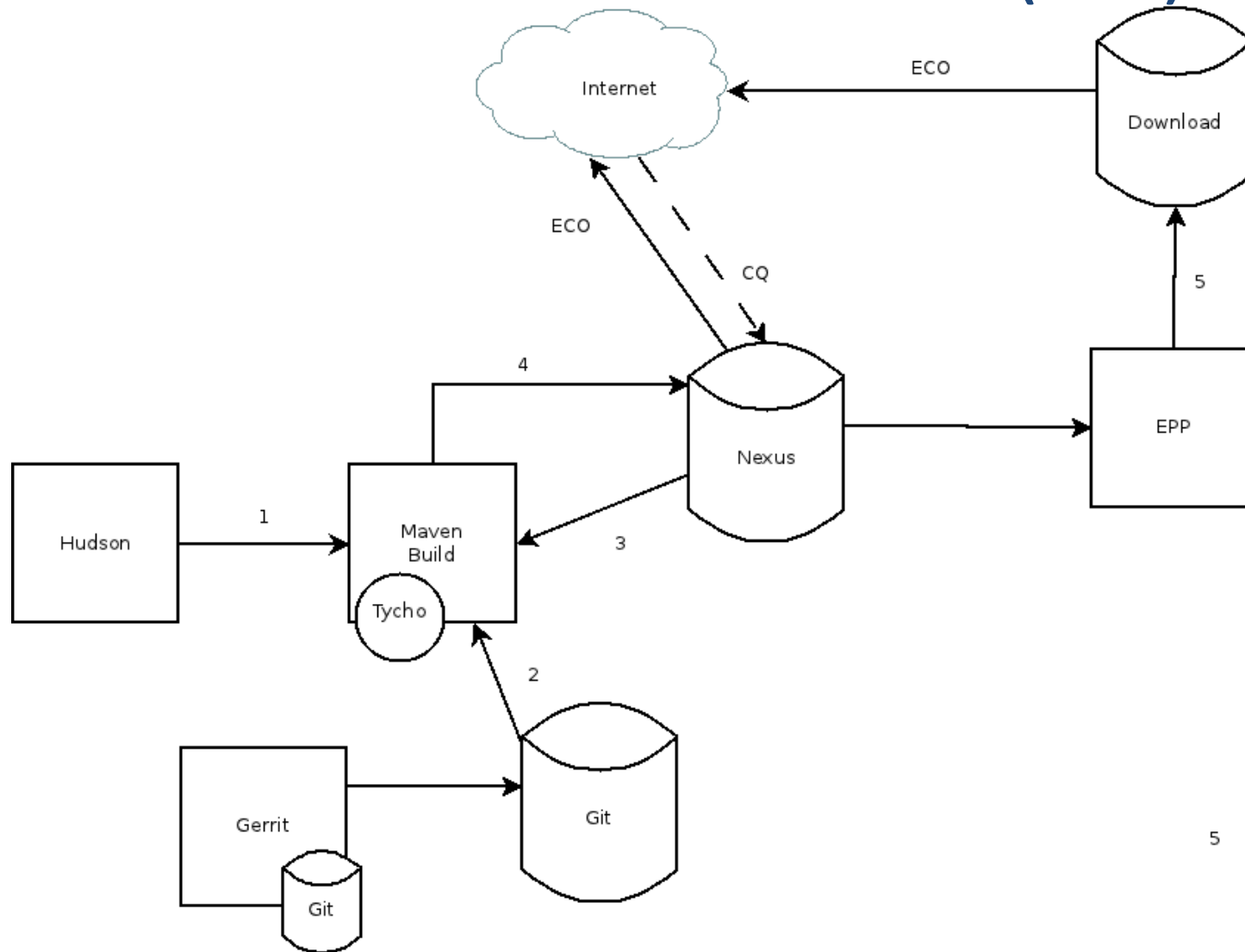
Formal annual objective is .995 uptime. Have exceeded that for 6 years running.

New Infrastructure

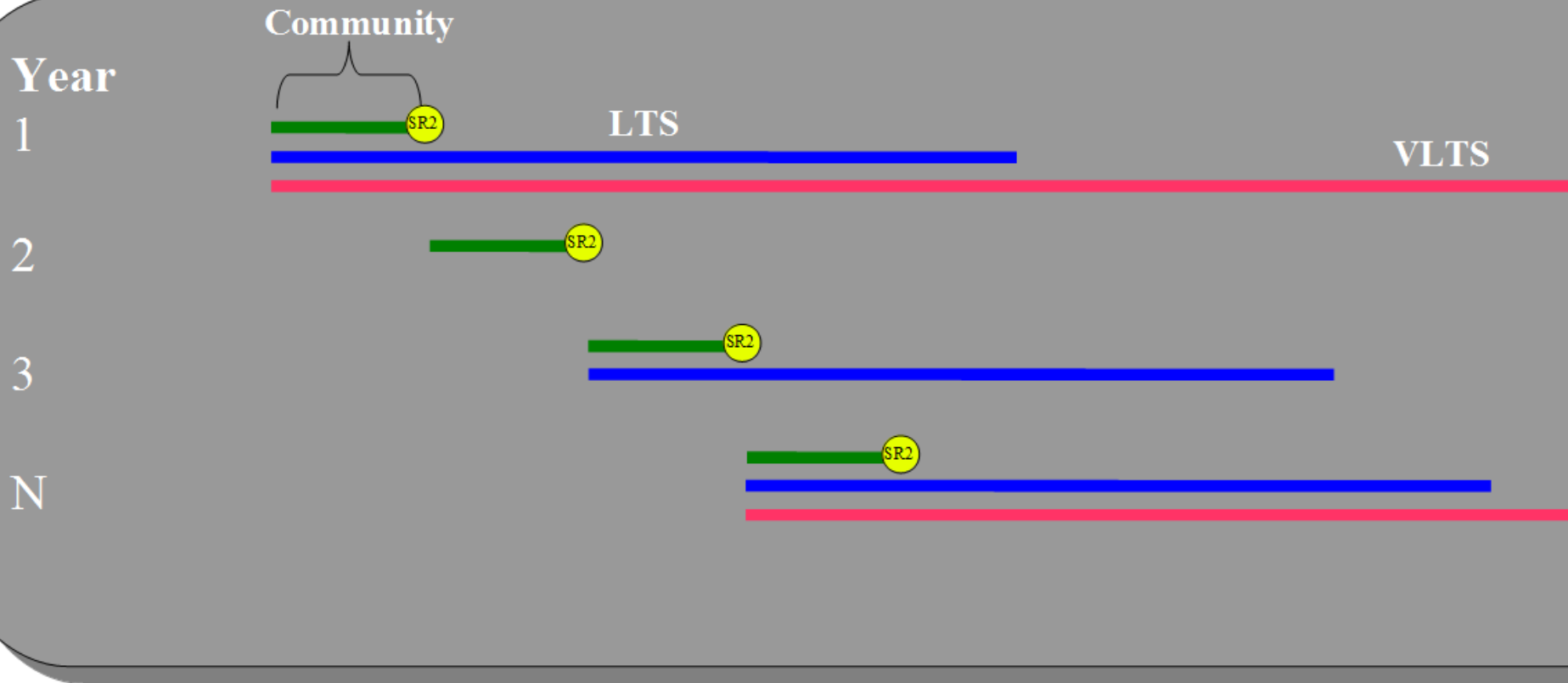


CVS @ Eclipse will be shut off 21-Dec-2012

Common Build Infrastructure (CBI)



Long Term Support



Long Term Support

- Delivering value to the ecosystem
- Reduce costs for all who rely on Eclipse code in their products
- Opportunity for members to lower resource requirements



AIRBUS
AN EADS COMPANY



ERICSSON 

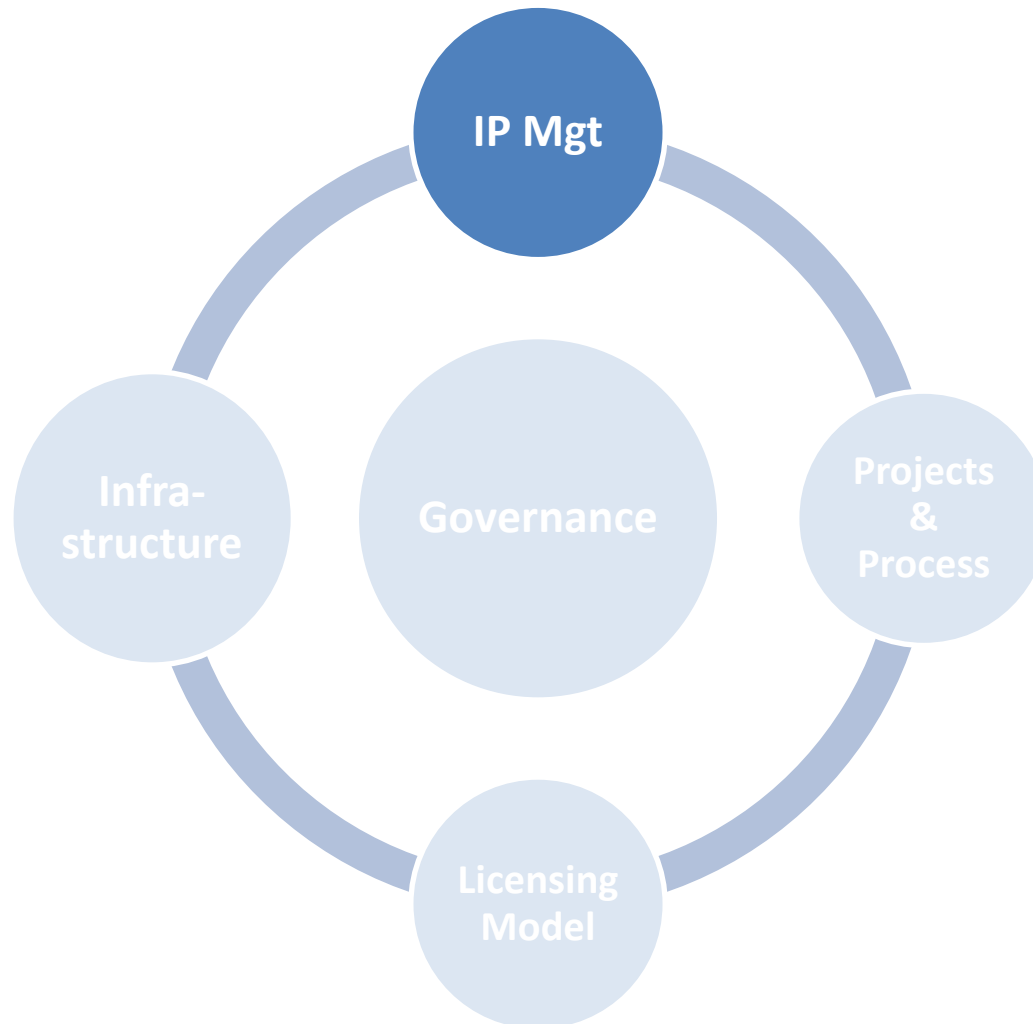


Atos

THALES



Foundation Services



IP Governance at Eclipse



Code Originates from Three Sources:

1. Contributions from Eclipse Committers
2. Contributions from Contributors
3. Contributions from third party sources (e.g. another open source project)

Eclipse Due Diligence



- The components that are identified as needed are submitted for review.
- Each component is examined from the standpoint of:
 1. Provenance
 2. License Suitability
- Patent searches are not done.
- We use tools to help us
- Our committers do much of the work

Training and Communication

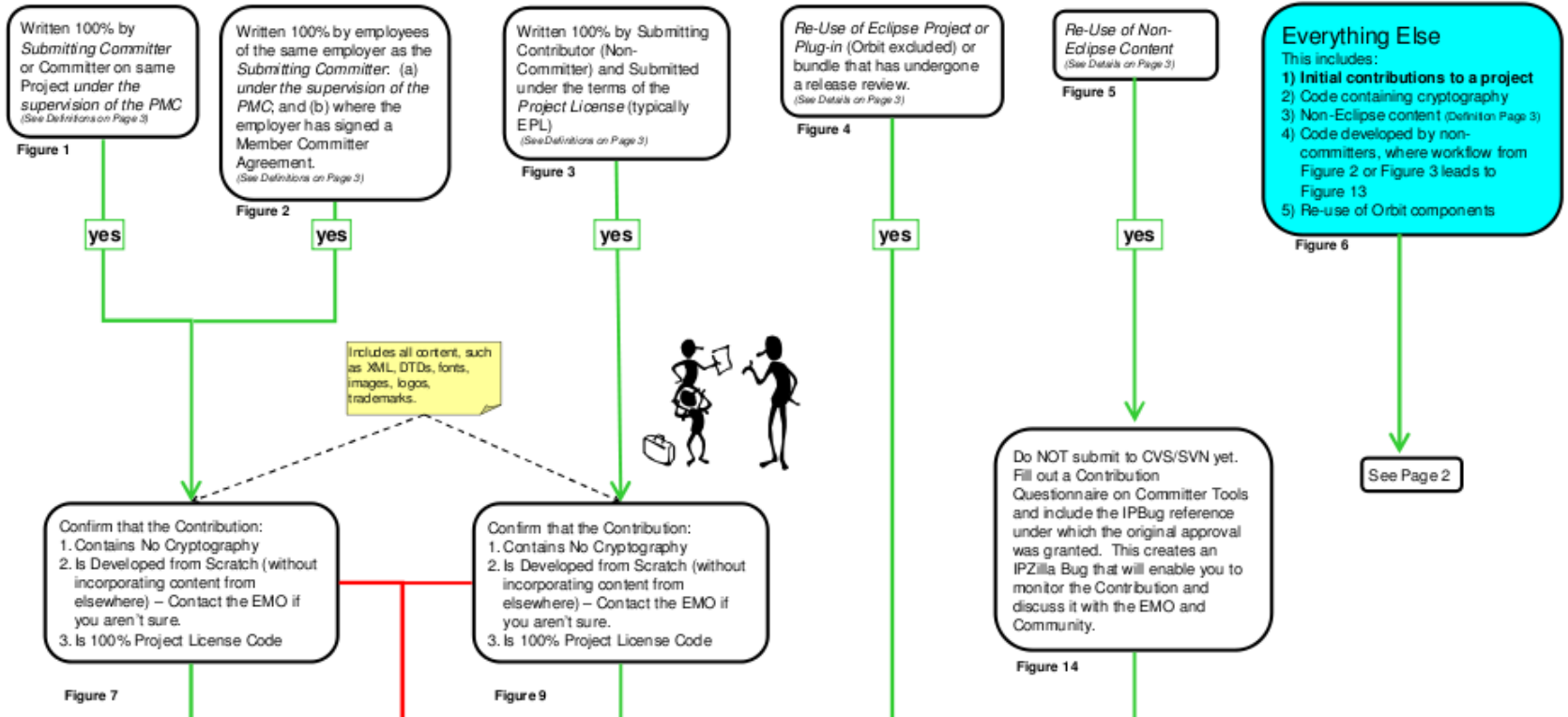


Eclipse Legal Process

Start Here



What is the origin of the code?
See Figures 1 through 6 below



How is Provenance Managed



*Who wrote this
stuff and how
did they agree
to the license?*

We Use Tools to Help Us



- The Eclipse Foundation uses tools to assist with our review.
 - Keyword search tools (from IBM)
 - Code print matching tools (Black Duck)
 - IPZilla content management and workflow

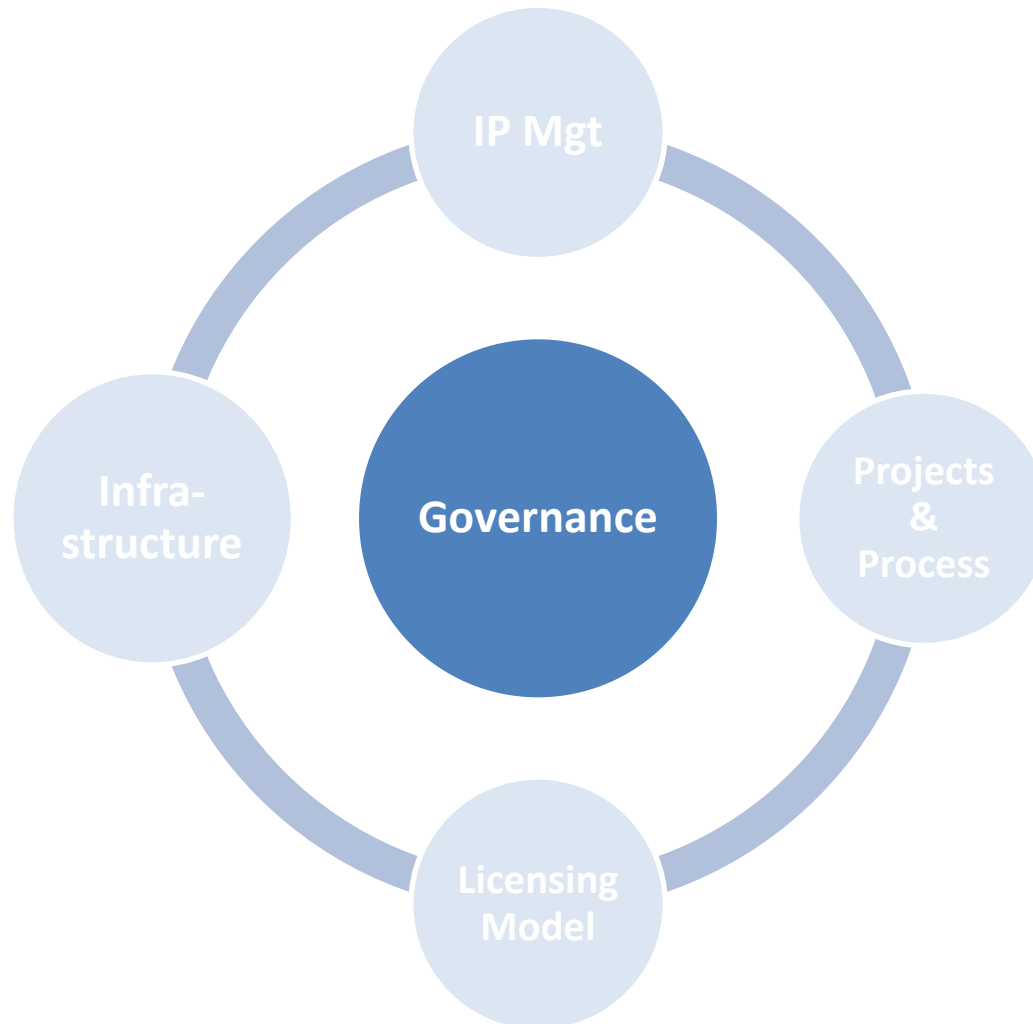
IPZilla Overview



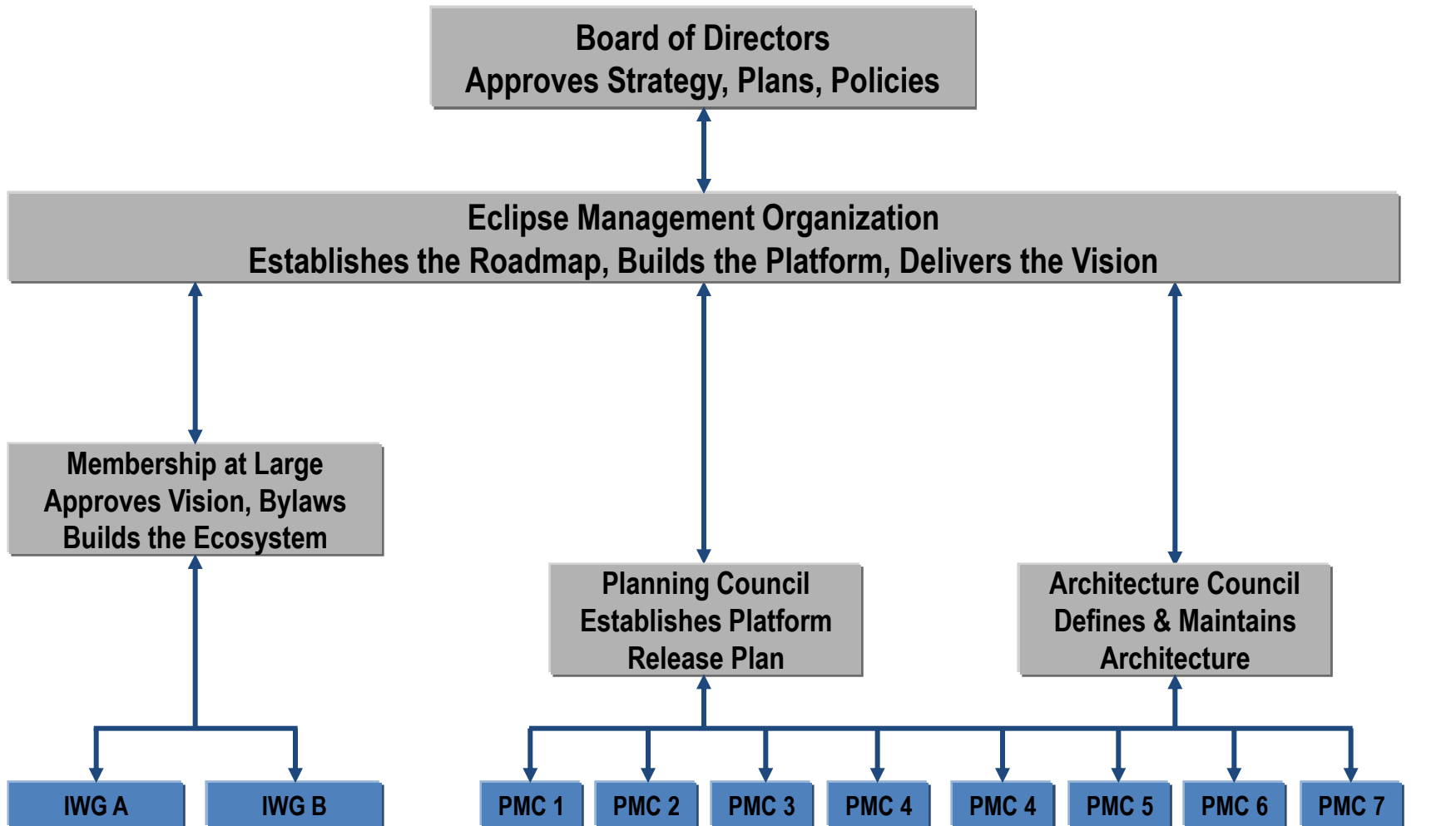
- Eclipse Development Process requires all 3rd party libraries used in Eclipse Projects be approved by Eclipse Foundation
- Eclipse Foundation performs recursive analysis of libraries for pedigree, license compatibility, code scans for incompatible code and other possible problems, etc.
- This process is managed by a tool known to Eclipse Committers as “IPZilla”.

The screenshot shows the IPZilla search interface. At the top, there is a navigation bar with 'eclipse' and 'IPZILLA' logos, and links for 'CONTACT' and 'LEGAL'. Below this is a search bar with 'IPZilla - Search for CQs' and a search button. The main search area is titled 'Find a Specific CQ' and 'Advanced Search'. It includes a 'Give me some help (reloads page)' link and a 'Summary' dropdown set to 'contains all of the words/strings'. Below this are three columns of search criteria: 'Product', 'Component', and 'Target'. Each column has a list of options and a dropdown arrow. The 'Product' column lists 'IP', 'modeling', 'rt', 'stp', and 'technology'. The 'Component' column lists 'IP_Discussion', 'birt', 'birt.ece', 'datatools.connectivity', and 'datatools.enablement'. The 'Target' column lists dates from '2008-05' to '2008-09'. Below these are three more search criteria: 'A Comment', 'The URL', and 'Keywords', each with a dropdown set to 'contains the string', 'contains all of the words/strings', and 'contains all of the keywords' respectively. At the bottom, there are four columns of search criteria: 'Status', 'Resolution', 'State', and 'Priority'. Each column has a list of options and a dropdown arrow. The 'Status' column lists 'UNCONFIRMED', 'NEW', 'ASSIGNED', 'REOPENED', 'RESOLVED', 'VERIFIED', and 'CLOSED'. The 'Resolution' column lists 'FIXED', 'INVALID', 'WONTFIX', 'DUPLICATE', 'WORKSFORME', 'MOVED', and '---'. The 'State' column lists 'approved', 'awaiting_analysis', 'awaiting_board_approval', 'awaiting_committer', 'awaiting_project', 'awaiting_pmc', and 'awaiting_emo'. The 'Priority' column lists 'P1', 'P2', 'P3', 'P4', and 'P5'.

Foundation Services



Eclipse Governance Structure





The Members of Eclipse

- 187 members
 - 11 Strategic Members
 - 1 Enterprise Members
- 1013 committers, representing 100+ organizations

Strategic Members



Enterprise Members



Members of Eclipse





Thank You!

Questions?

mike@eclipse.org
@mmilinkov