

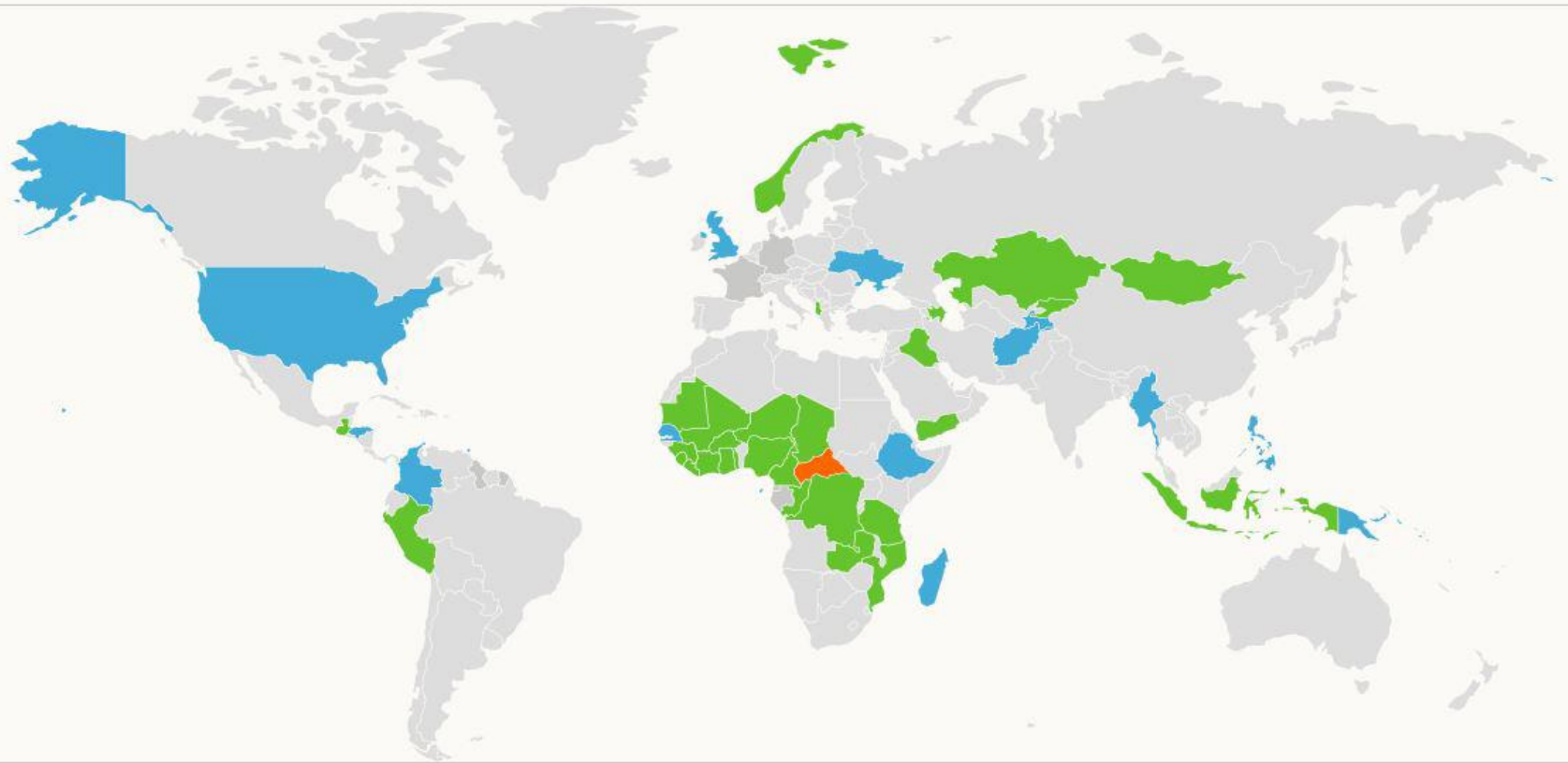
The logo for the United States Extractive Industries Transparency Initiative (USEITI). The letters 'USEITI' are rendered in a large, bold, sans-serif font. 'U' and 'S' are red, 'E' and 'I' are black, and the 'T' is blue. To the right of the letters, the full name 'United States Extractive Industries Transparency Initiative' is written in a smaller, black, sans-serif font, stacked in five lines.

USEITI United States Extractive Industries Transparency Initiative

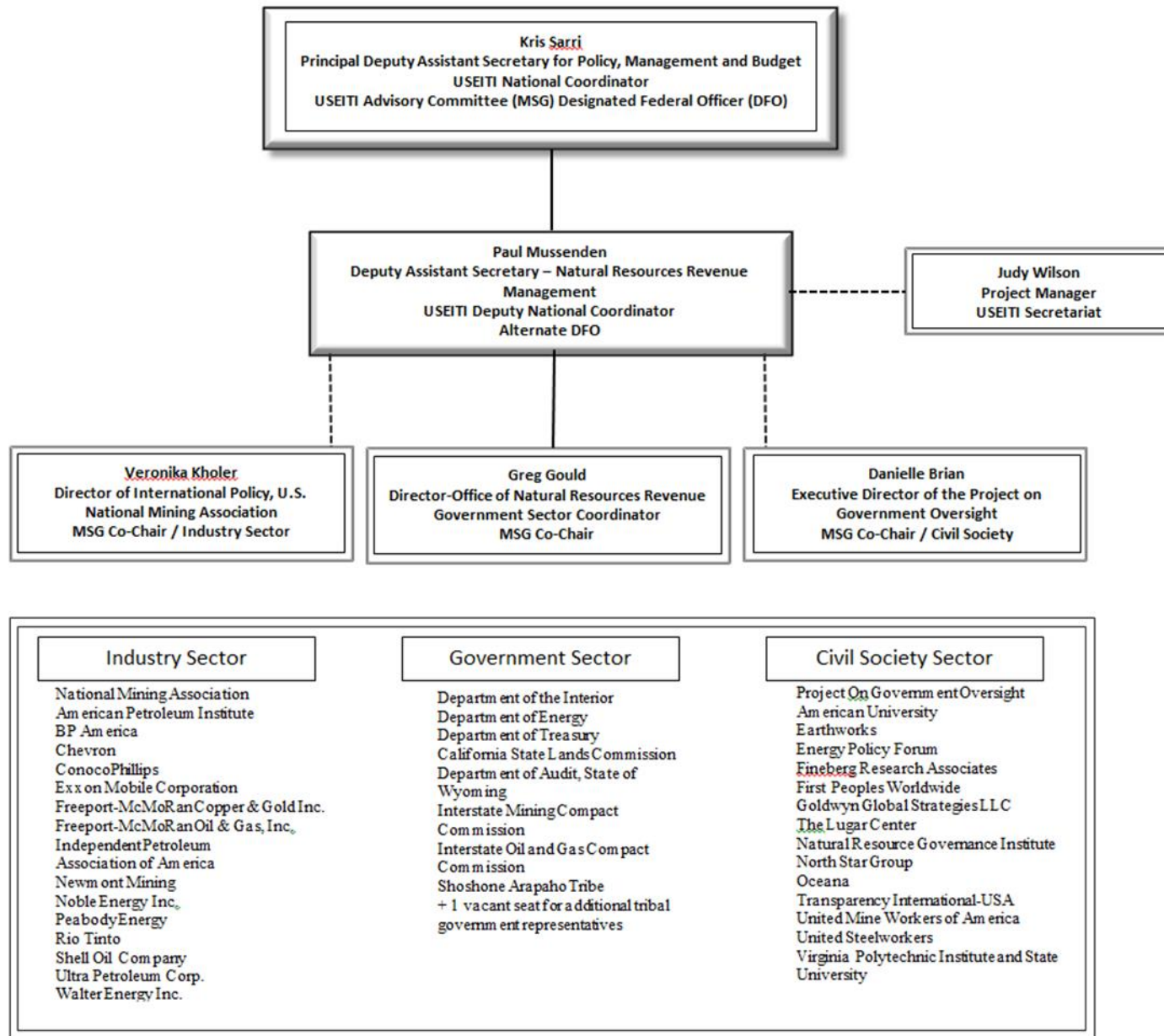
Open Government Partnership Presentation
February 11, 2015

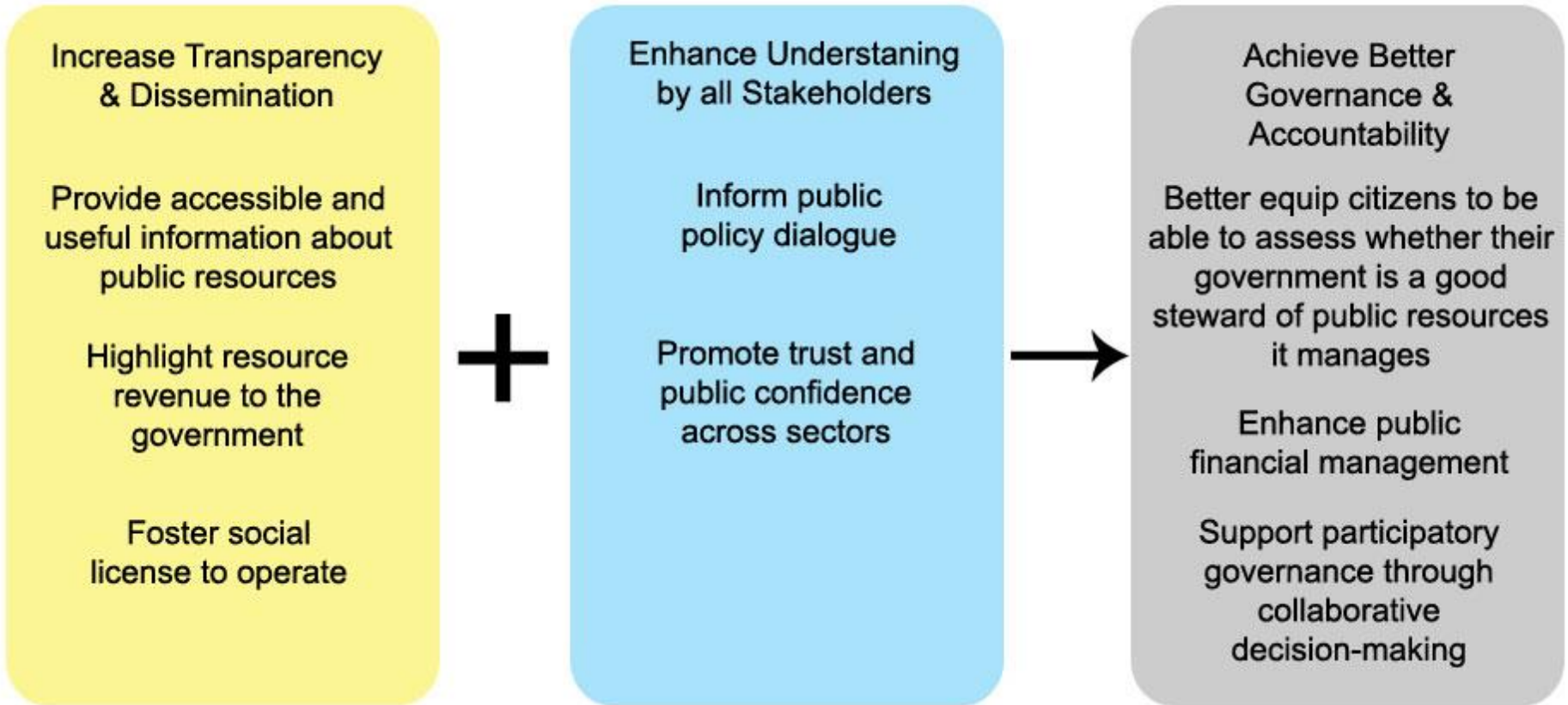
Danielle Brian, Civil Society Sector Co-Chair
Veronika Kohler, Industry Sector Co-Chair
Judy Wilson, USEITI Secretariat

USEITI Map of EITI Countries



- EITI Candidate Country** - implementing EITI, not yet meeting all requirements
- Suspended** - Compliant/Candidate status is temporarily suspended
- Other**

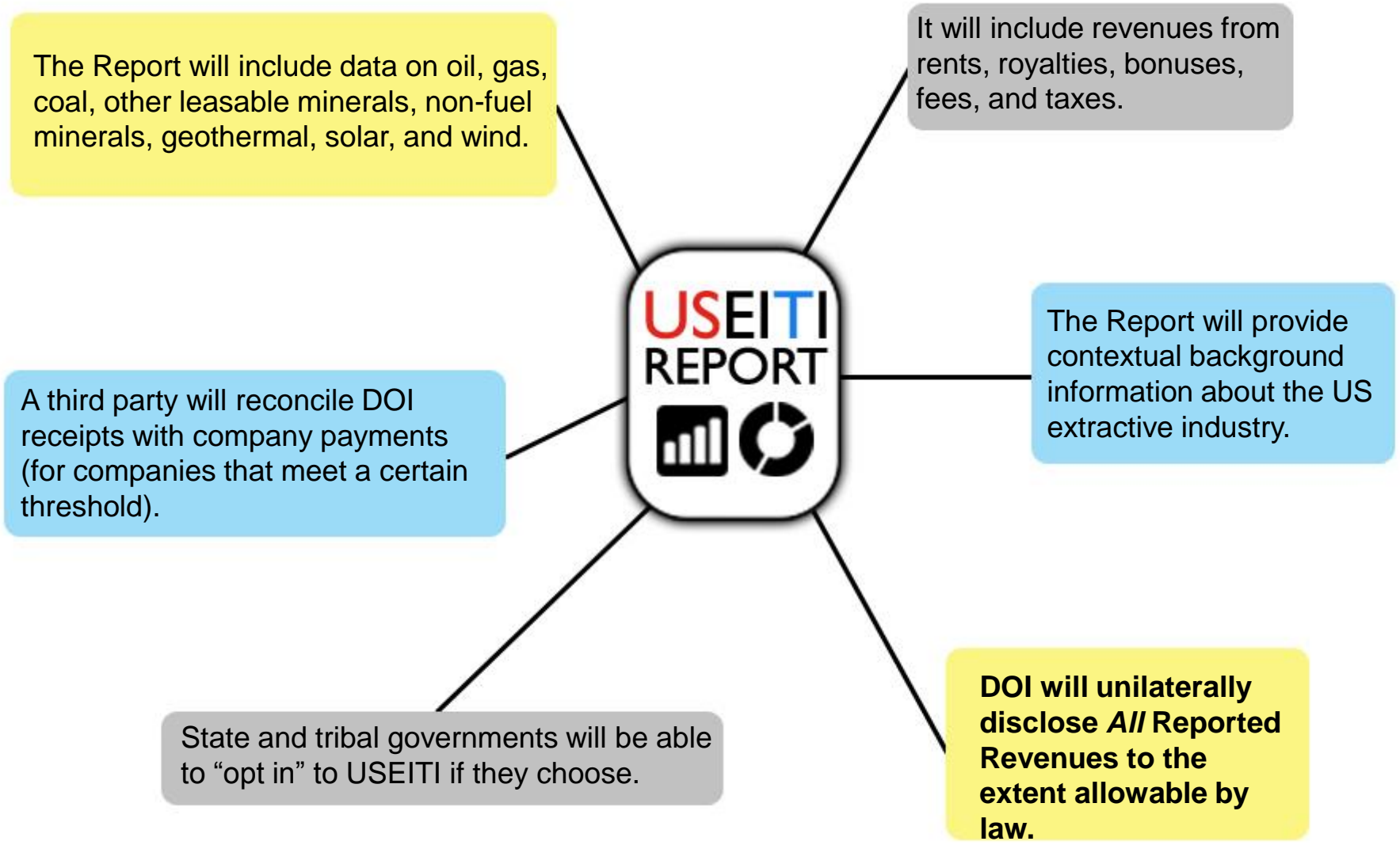




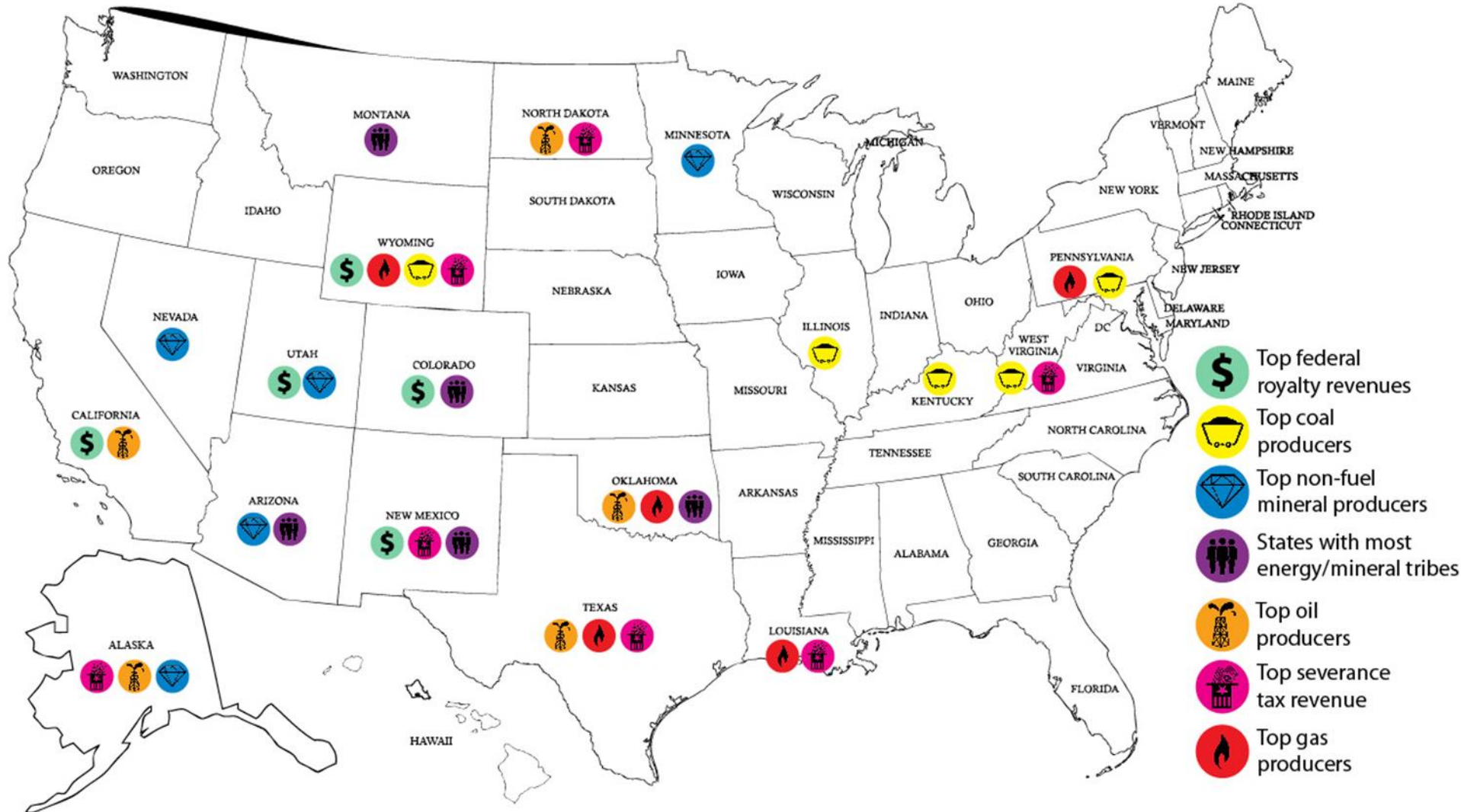
USEITI Implementation Timeline



EITI Requirement	MSG Decisions	Pending Decisions
SCOPE		
Types of commodities and revenues to be included	<p>Commodities: oil, gas, coal, other leasable minerals, non-fuel minerals (hard rock, sand and gravel), geothermal, solar, and wind.</p> <p>Revenue streams: rents, royalties, bonuses and fees collected by US Department of the Interior (DOI).</p> <p>Include Federal corporate income taxes.</p>	<p>Tabled for future discussion: forestry and fisheries.</p> <p>Details of how taxes can be reconciled.</p>
MATERIALITY		
Threshold for reconciliation	<p>For the initial report, \$50 million total annual revenues paid to DOI by parent company, including its subsidiaries. This equals approximately 80% of DOI natural resources revenues.</p> <p>For the second report, \$20 million total annual revenues paid to DOI by parent company, including its subsidiaries, which equals approximately 90% of DOI natural resources revenues.</p>	
REPORTING		
Background Information	Data and information that is currently publicly available, reliable and accessible for all commodities within scope.	Details and exact level of disclosure.
Unilateral disclosure	For all in-scope commodities, DOI will disclose company-level data to the extent allowable by law (approximately 100% of DOI revenue in scope).	
Third party reconciliation	A third party will compare data from companies on their payments to government with data from government on revenues collected from companies, for in-scope commodities within the reporting materiality threshold.	
Sub-national reporting	<p>Adapted implementation: revenues paid to or collected for sub-national governments are out of scope due to legal, regulatory, and timeliness issues, but an opt-in process will be available for individual states or other sub-national entities.</p> <p>*Pilot with MSG selected counties: factual description of revenue sustainability over time including "proven" reserves and fiscal impacts related to public services and infrastructure; and direct employment in the EI.</p>	Details of the opt-in process.

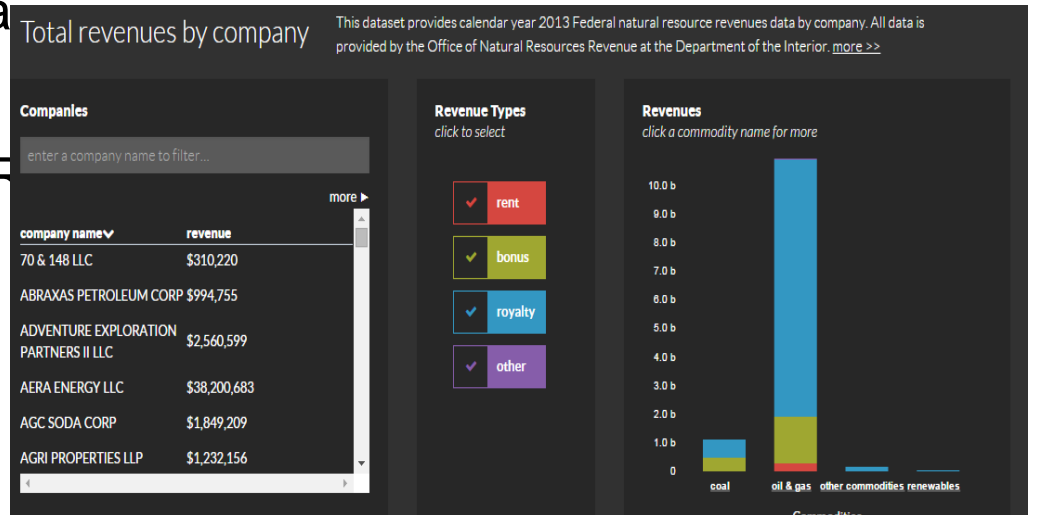
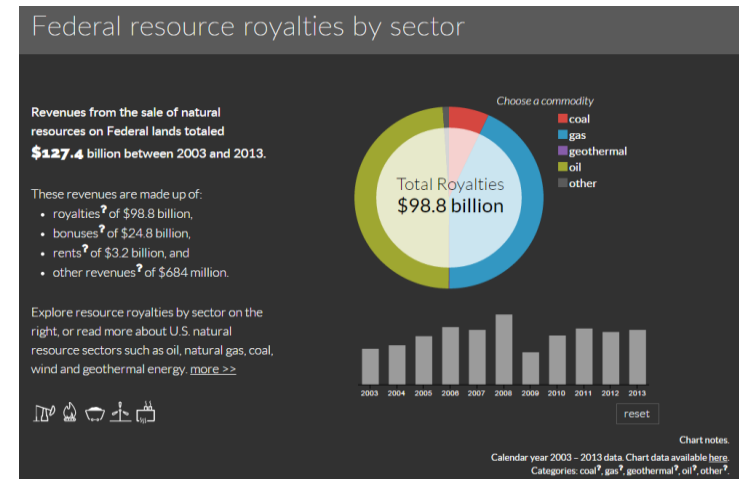


USEITI Map of EI in States and Tribes



USEITI On-Line Data Portal

- DOI's Natural Resources Revenue Data Portal Launched 2014
- Developed in collaboration with GSA's 18f Program using open source software
- Developed for specific "user personas" based on stakeholder design workshops
- Combines interactive data visualizations & detailed data sets to enhance user experiences
- First time disclosure of ONRR revenue data by company
- <https://useiti.doi.gov>



Questions and comments

For more information about
USEITI,
please visit
www.doi.gov/eiti

For more information about
the EITI International
Standard, please visit
www.eiti.org

To visit the data portal:
<https://useiti.doi.gov>

Written comments can be emailed to:
USEITI@ios.doi.gov

Or mailed to:
USEITI Secretariat
1849 C Street NW MS 4211
Washington DC 20240

SECTOR CONTACT INFORMATION

Industry Sector Co-Chair:
Veronika Kohler
Vkohler@nma.org

Civil Society Sector Co-Chair:
Danielle Brian
Dbrian@pogo.org

Government Sector Co-Chair
Greg Gould
Greg.Gould@onrr.gov