

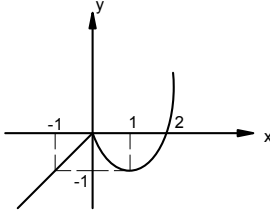
Fonksiyonlarda Dönüşüm

1. \mathbb{R} den \mathbb{R} ye $h(x) = f(1-|x|)$, $g(x) = |x|$,
 $t(x) = x+1$ ve $S(x) = -x$ fonksiyonları veriliyor.

h fonksiyonu aşağıdakilerden hangisine eşittir?

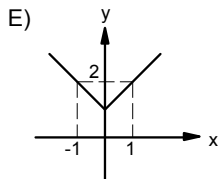
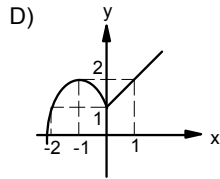
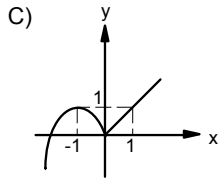
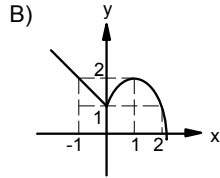
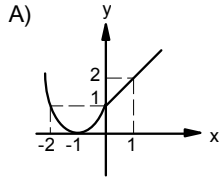
- A) fosogot B) fotogos C) fotosog
 D) fogosot E) fogotos

2.



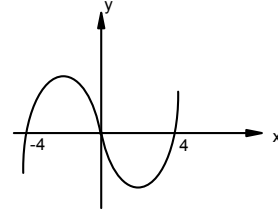
$f: \mathbb{R} \rightarrow \mathbb{R}$, $y = f(x)$ in grafiği şekilde verilmiştir.

$g(x) = 1 - f(-x)$ in grafiği aşağıdakilerden hangisidir?



Muharrem Şahin

3.

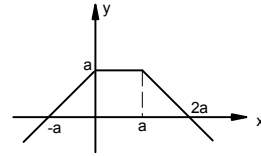


Şekilde $y = f(x)$ fonksiyonunun grafiği verilmiştir.

$f(2x) = f(x)$ denkleminin kaç gerçek kökü vardır?

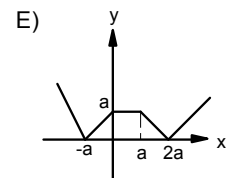
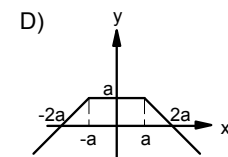
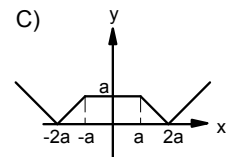
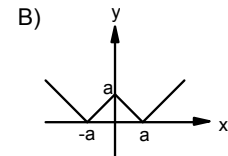
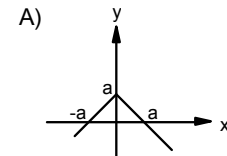
- A) 0 B) 1 C) 2 D) 3 E) 4

4.

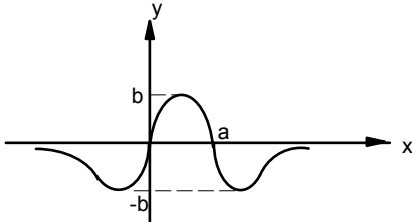


$f: \mathbb{R} \rightarrow \mathbb{R}$, $y = f(x)$ in grafiği şekilde verilmiştir.

$g(x) = f(|x|)$ in grafiği aşağıdakilerden hangisidir?



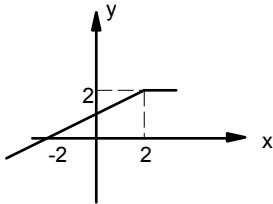
5.



$f: \mathbb{R} \rightarrow \mathbb{R}$, $y = f(x)$ in grafiği şekilde verilmiştir.
 $g(x) = f(a - x)$ in grafiği aşağıdakilerden hangisidir?

- A) B)
- C) D)
- E)

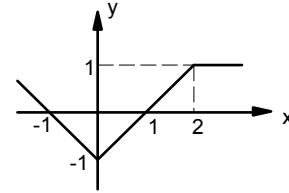
6.



$f: \mathbb{R} \rightarrow \mathbb{R}$, $y = f(x)$ in grafiği şekilde verilmiştir.
 $g(x) = f(2x - 1)$ in grafiği aşağıdakilerden hangisidir?

- A) B)
- C) D)
- E)

7.

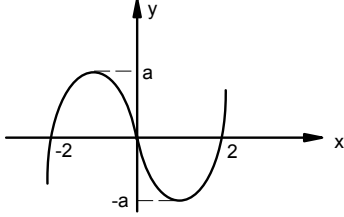


$f: \mathbb{R} \rightarrow \mathbb{R}$, $y = f(x)$ in grafiği şekilde verilmiştir.

$g(x) = f\left(\frac{x-2}{2}\right)$ in grafiği aşağıdakilerden hangisidir?

- A) B)
- C) D)
- E)

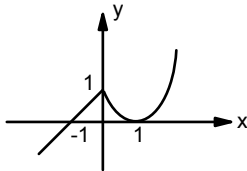
8.



$f: \mathbb{R} \rightarrow \mathbb{R}$, $y = f(x)$ in grafiği şekilde verilmiştir.
 $g(x) = f(2x)$ fonksiyonunun grafiği aşağıdakilerden hangisidir?

- A) B)
- C) D)
- E)

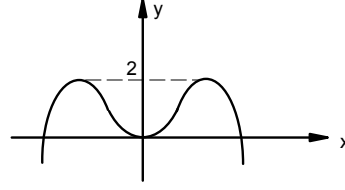
9.



$f: \mathbb{R} \rightarrow \mathbb{R}$, $y = f(x)$ in grafiği şekilde verilmiştir.
 $g(x) = f(-|x|)$ in grafiği aşağıdakilerden hangisidir?

- A) B)
- C) D)
- E)

10.

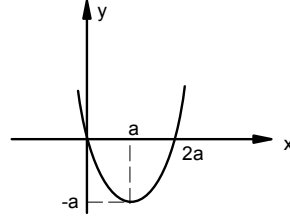


Şekilde $y = f(x)$ fonksiyonunun grafiği verilmiştir.

Buna göre; $g(x) = 2f(x) - 2$ fonksiyonunun grafiği x eksenini kaç farklı noktada keser?

- A) 0 B) 1 C) 2 D) 3 E) 4

11.

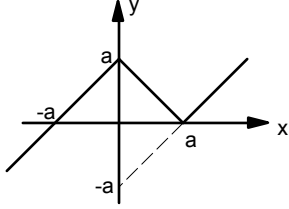


$f: \mathbb{R} \rightarrow \mathbb{R}$, $y = f(x)$ in grafiği şekilde verilmiştir.

$g(x) = 2f(x) + a$ nın grafiği aşağıdakilerden hangisidir?

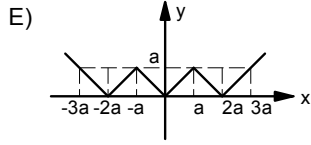
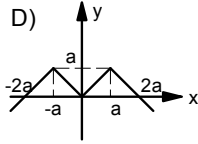
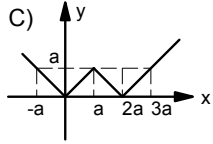
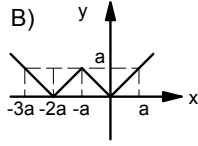
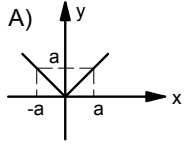
- A) B)
- C) D)
- E)

12.

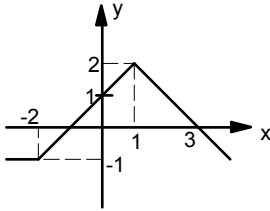


$f: \mathbb{R} \rightarrow \mathbb{R}$, $y = f(x)$ in grafiği şekilde verilmiştir.

$g(x) = f(|x| + a)$ in grafiği aşağıdakilerden hangisidir?

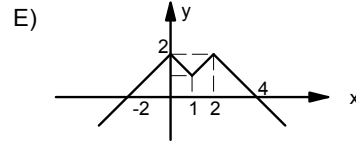
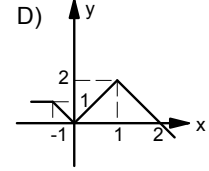
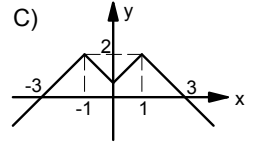
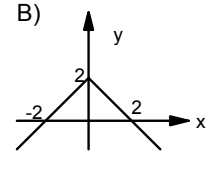
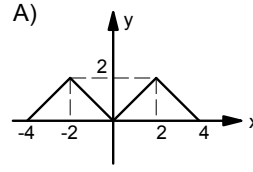


13.

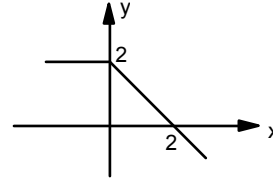


$f: \mathbb{R} \rightarrow \mathbb{R}$, $y = f(x)$ in grafiği şekilde verilmiştir.

$g(x) = f(|x-1|)$ in grafiği aşağıdakilerden hangisidir?

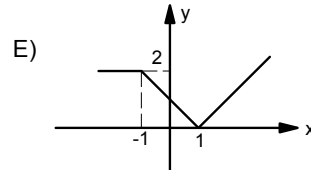
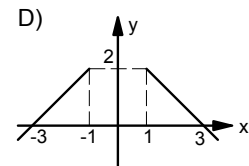
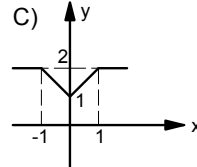
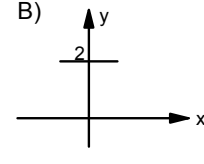
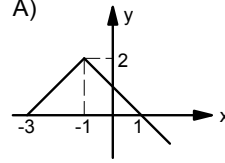


14.

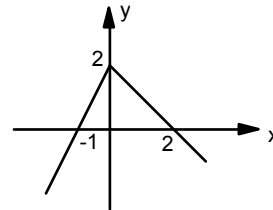


$f: \mathbb{R} \rightarrow \mathbb{R}$, $y = f(x)$ in grafiği şekilde verilmiştir.

$g(x) = f(1-|x|)$ in grafiği aşağıdakilerden hangisidir?



15.



$f: \mathbb{R} \rightarrow \mathbb{R}$, $y = f(x)$ in grafiği şekilde verilmiştir.

$g(x) = |-1 + f(|x|)$ in grafiği aşağıdakilerden hangisidir?

