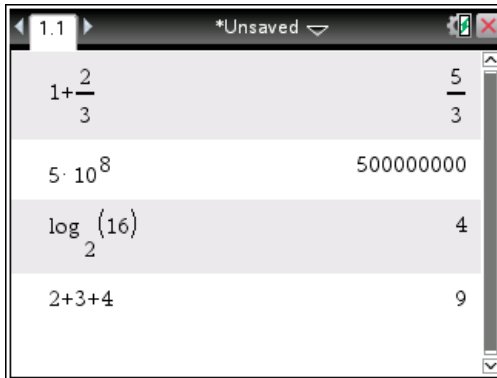
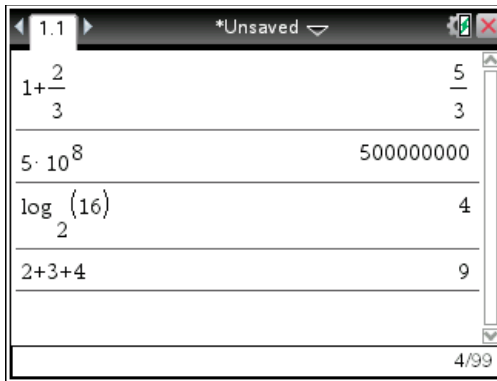


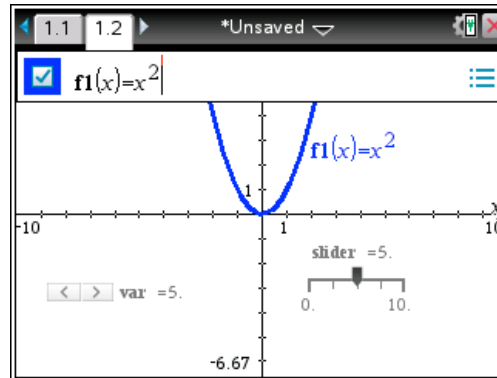
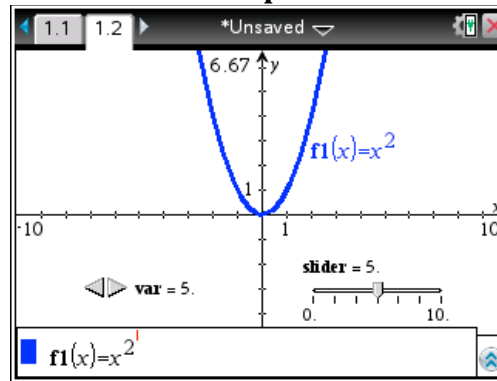
TI-Nspire OS 3.2 (top row) comparison to OS 3.6 (bottom row)

Calculator



Alternate shading of lines.
More vertical space per line.
No history bar at bottom of screen.
Fraction line is bolder.

Graph



Double tap empty space to show/hide the function entry line.
Function entry line now at top of screen.
Sliders look more like those on iPad App.
Resized axis' values and labels.

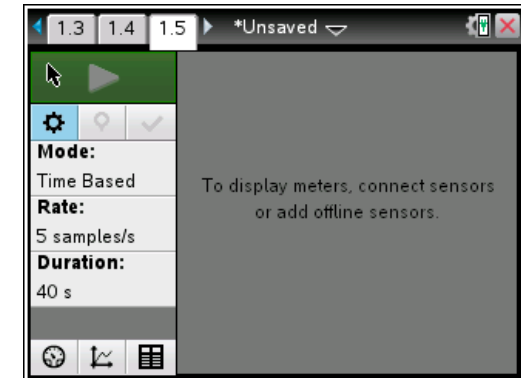
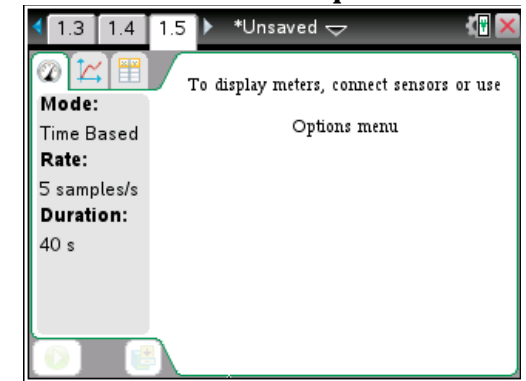
Lists & Spreadsheet

TI-Nspire OS 3.2 Lists & Spreadsheet interface showing a spreadsheet with a formula bar. The formula bar contains $=a1+3$. The spreadsheet has columns A, B, C, D and rows 1-6.

TI-Nspire OS 3.6 Lists & Spreadsheet interface showing the same spreadsheet with blue tinted selections. The formula bar contains $=a1+3$.

Five full rows on show.
Resized column and row labels.
Blue tint to selections, rather than grey.

Vernier Dataquest



Completely revised user interface.