



Potomac Shad Data

Presented to: TPFR

Date: February 18, 2016

#PilgrimageOfFins - All rights reserved.

© Pilgrimage Outdoors

Lettuce Fly Company LLC.

Contents

- Thank You
- Disclaimer
- Temperature and Cherry Blossom Peak Bloom Data
- Potomac Discharge Data
- **PREDICTION TABLE**
- Memorable Moments at Fletcher's

Thank You

First and foremost, I need to thank the members of TPFR and Fletcher's Boathouse for sharing a wealth of knowledge. Not only for the underlying catch data which fed this analysis, but also for their continued dissemination of fishing wisdom over the years.

Also, I would be remiss if I didn't mention my late fishing buddy John Palmer, who talked me into rowing a Fletcher's rowboat for the first time back in 2010! The spring shad run was one of John's favorite fishing excursions, so now it is extra special when Tom Krauth and I are fortunate enough to land a few shad in his honor.

Sources	
Potomac River Temperature at Little Falls (7.1 ft from the surface)	United State Geological Survey
Potomac River Discharge at Little Falls	United State Geological Survey
Cherry Blossom Peak Bloom	National Parks Service
Potomac Catch Data	Tidal Potmac Fly Rodders

Disclaimer

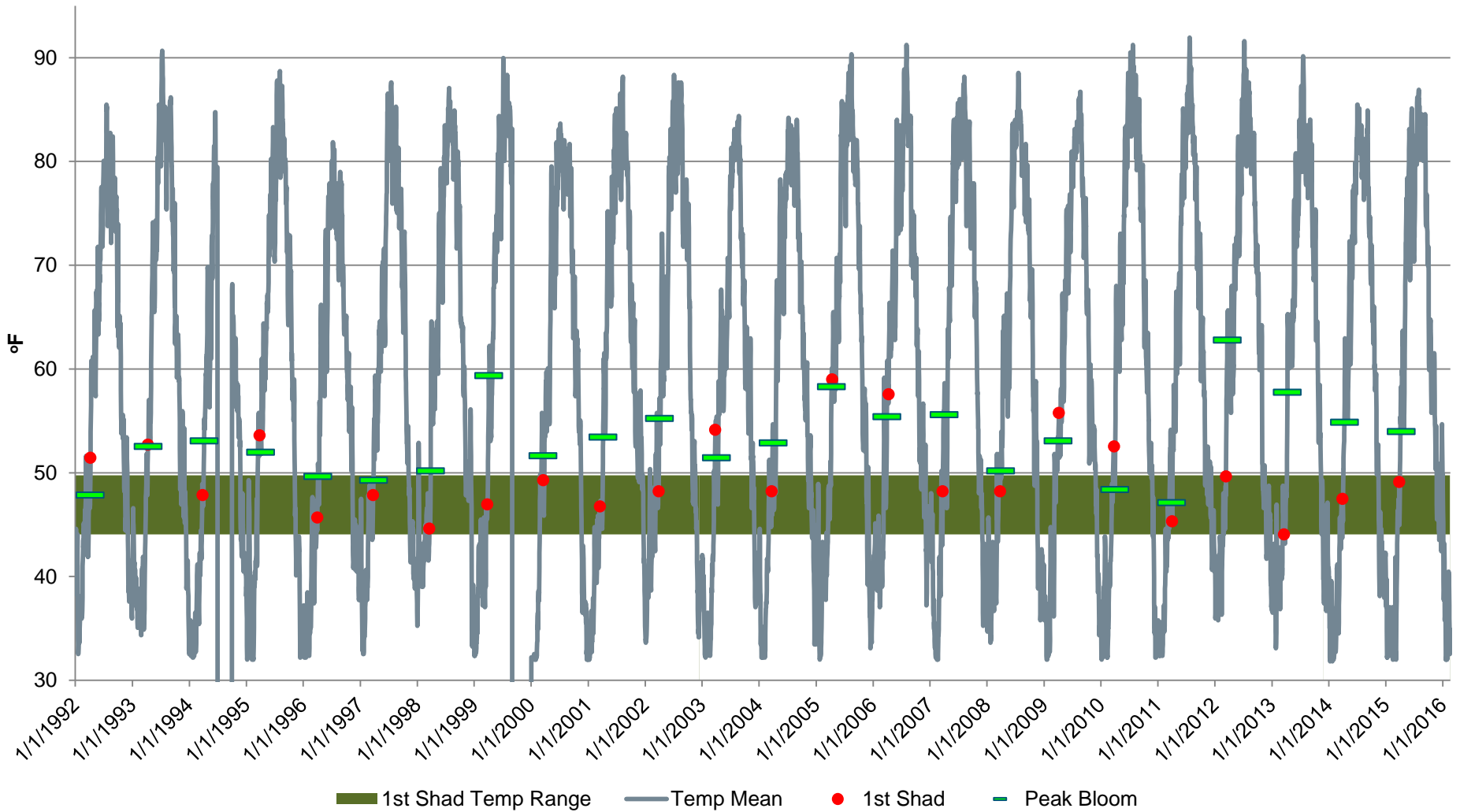
There has been much more written about the shad run, and written by far more qualified anglers. This is my attempt to make sense of a complex fishery and pass time during the winter doldrums.

I realize there are many other factors that contribute to the first arrival of shad, but this analysis attempts to sort out the relationship between local water temperature, peak cherry blossom bloom, and current discharge. Several other factors exist that are not quantified in this analysis, including but not limited to:

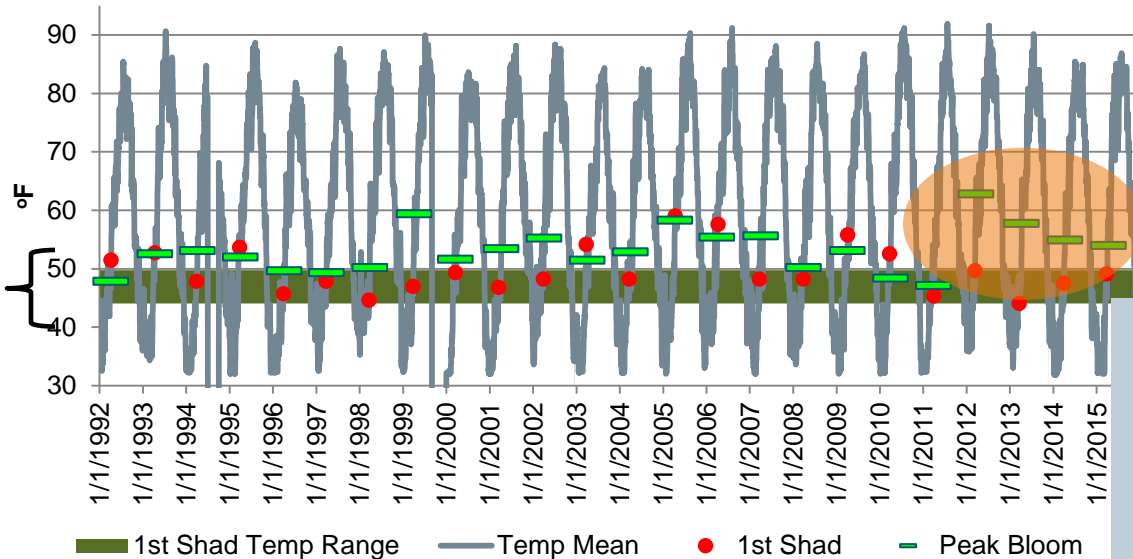
- Atlantic Ocean & Chesapeake Bay temperature
- Increasing daylight hours during the spring
- Overall breeding stock of shad

It is my hope that this analysis will help you plan a fishing trip this spring; however, when all else fails, the best time to fish is whenever you can!

Temperature and Cherry Blossom Peak Bloom Data



Temperature and Cherry Blossom Peak Bloom Data

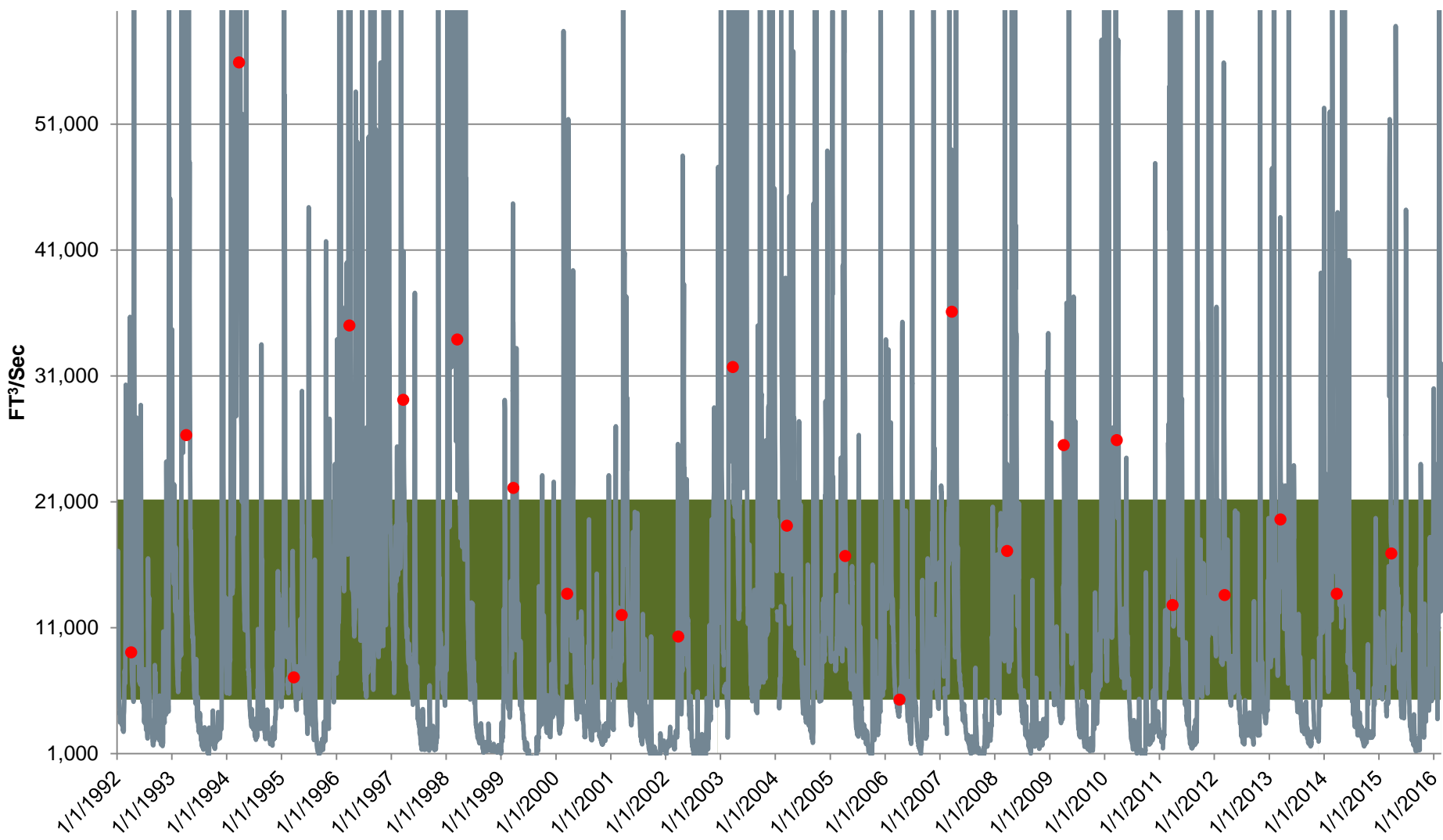


Over the past few years, the peak bloom occurred well after the first shad catch

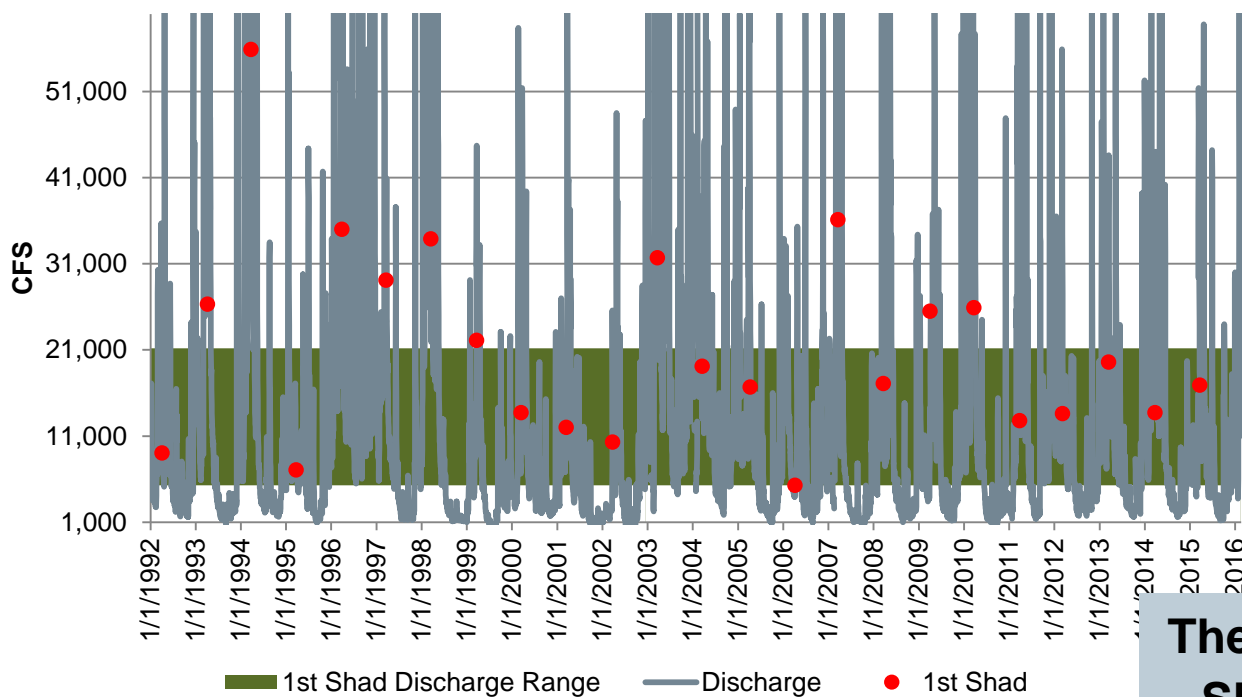
Once water temps have reached 45°-50°F is the best time to try and catch the FIRST SHAD

Keep a close eye on the river temperature gauge. Once the river hits 40°F for the first time, it takes approximately two weeks for the river to reach the desired 45° – 50°F range.

Potomac Discharge Data



Potomac Discharge Data



The optimal flow for the FIRST SHAD is between 5,000 and 21,000 CFS

Be mindful of the river flow. Despite ideal temperatures, it will not be productive or safe to fish in high fast moving water

PREDICTION TABLE

Prediction Table				
Date	Current River Temperature	Current River Discharge	Cherry Blossom Peak Forecast	Shad ETA
2/17/2016	34.88	32,000	TBD	Too soon to tell

It is too soon to tell when exactly the shad will arrive. Perhaps the El Nino will be kind to shad anglers and will grant us an early start to the season. As we approach the start for the season, I will provide updates to the data and predictions.

However, one thing is for certain, the first shad cannot arrive soon enough!

Tight Lines,

Douglas Romaine



Potomac Shad Data

Memorable Moments at Fletcher's

2010 (1st ever)



2014



2015



2012



2013

