



Potomac Shad Forecast

Presented to: TPFR

Date: March 07, 2016

#PilgrimageOfFins - All rights reserved.

© Pilgrimage Outdoors

Lettuce Fly Company LLC.

Contents

- **PREDICTION TABLE**
- Cherry Blossom Forecast
- Weather Forecast
- Discharge Forecast
- Appendix
 - Historic Temperature and Cherry Blossom Peak Bloom Data
 - Historic Potomac Discharge Data

PREDICTION TABLE

| Prediction Table | | | | |
|------------------|---------------------------|-------------------------|------------------------------|------------------|
| Date | Current River Temperature | Current River Discharge | Cherry Blossom Peak Forecast | Shad ETA |
| 2/17/2016 | 34.88 | 32,000 | TBD | Too soon to tell |
| 2/28/2016 | 42.62 | 40,100 | TBD | 3/19/2016 |
| 3/6/2016 | 46.22 | 23,500 | March 31st - April 3rd | 3/19/2016 |

Holding to the March 19th prediction. However, with forecasted temperatures in the upper 70's throughout the week could trigger an earlier arrival.

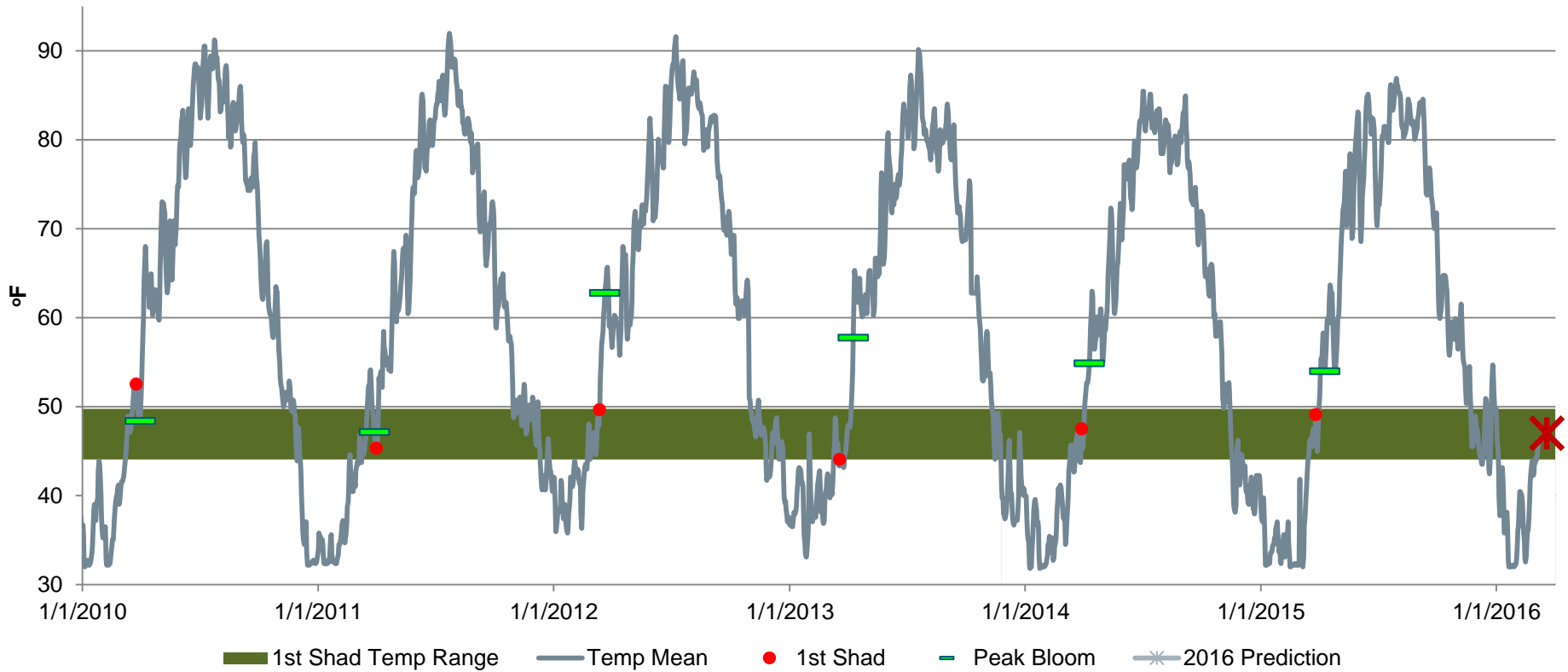
These are heading to Friends of Fletcher's Cove donation box. Henry Ford style, the shad can have any color they want so long as it's RED.



Tight Lines,

Douglas Romaine

PREDICTION TABLE



Water temperatures have reached the 45°F mark

Cherry Blossom Forecast

- The NPS forecasts peak bloom to occur between March 31st and April 3rd
- I walked by the “[Indicator Tree](#)” this past Saturday, and could not tell a difference between it and the other trees.
- However, there were some cormorants hanging around the tidal basin!



• [Source 1](#)

Weather Forecast

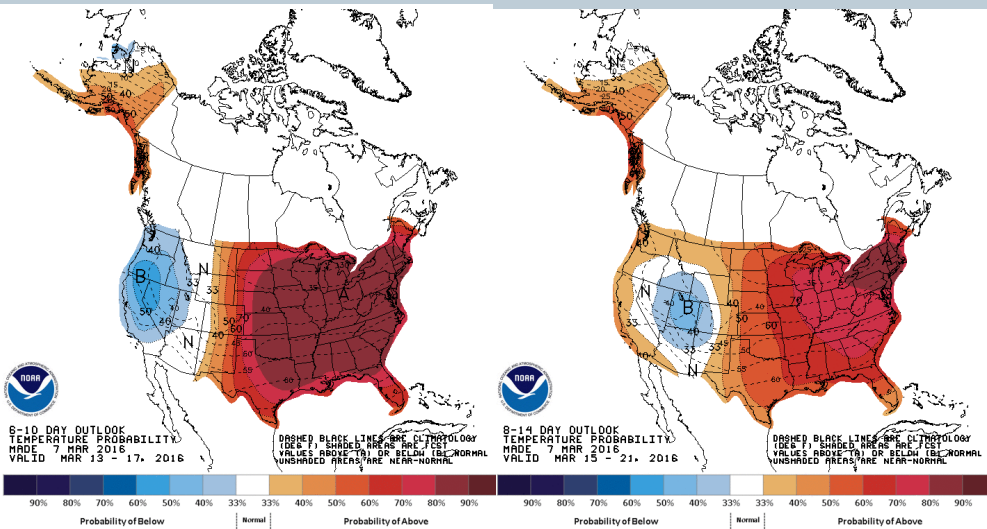
- The latest weather forecasts continue to call for above average temperature for the first half of March,

| Sunday | Monday | Tuesday | Wednesday | Thursday | Friday | Saturday |
|--|--|--|---|--|--|--|
| Feb 28 | 29 | Mar 1 | 2 | 3 | 4 | 5 |
| Actual Temp 65° Lo 33° Hist. Avg. 50° Lo 33° | Actual Temp 65° Lo 44° Hist. Avg. 51° Lo 34° | Actual Temp 65° Lo 40° Hist. Avg. 51° Lo 34° | Actual Temp 60° Lo 31° Hist. Avg. 51° Lo 34° | Actual Temp 41° Lo 29° Hist. Avg. 51° Lo 34° | Actual Temp 42° Lo 32° Hist. Avg. 52° Lo 34° | Actual Temp 45° Lo 35° Hist. Avg. 52° Lo 34° |
| Yesterday 6 | Tonight 7 | 8 | 9 | 10 | 11 | 12 |
| Actual Temp 52° Lo 37° Hist. Avg. 52° Lo 35° | Patchy clouds Lo 49° Hist. Avg. 53° Lo 35° | Partly sunny 73° Lo 55° Hist. Avg. 53° Lo 35° | Mostly sunny 77° Lo 58° Hist. Avg. 53° Lo 36° | Times of clouds and sun 82° Lo 61° Hist. Avg. 54° Lo 36° | Partly sunny and not as warm 70° Lo 57° Hist. Avg. 54° Lo 36° | Rain and drizzle in the p.m. 66° Lo 54° Hist. Avg. 54° Lo 36° |
| 13 | 14 | 15 | 16 | 17 | 18 | 19 |
| A couple of showers possible 67° Lo 48° Hist. Avg. 55° Lo 37° | Clouds, a t-storm possible 66° Lo 50° Hist. Avg. 55° Lo 37° | Periods of sun 67° Lo 49° Hist. Avg. 56° Lo 37° | Decreasing clouds 66° Lo 52° Hist. Avg. 56° Lo 38° | Cloudy most of the time 66° Lo 53° Hist. Avg. 56° Lo 38° | Cloudy, chance for rain 66° Lo 42° Hist. Avg. 56° Lo 38° | 1st Shad? 66° Lo 44° Hist. Avg. 57° Lo 38° |
| 20 | 21 | 22 | 23 | 24 | 25 | 26 |
| Some sun, then clouds 68° Lo 44° Hist. Avg. 57° Lo 39° | A couple of showers possible 59° Lo 38° Hist. Avg. 58° Lo 39° | Mostly cloudy 50° Lo 31° Hist. Avg. 58° Lo 39° | Plenty of clouds 48° Lo 44° Hist. Avg. 58° Lo 40° | Warmer with partial sunshine 62° Lo 46° Hist. Avg. 59° Lo 40° | Mostly sunny 62° Lo 43° Hist. Avg. 59° Lo 40° | Rain becoming steadier 57° Lo 40° Hist. Avg. 59° Lo 40° |

• [Source 1](#), [Source 2](#), [Source 3](#), [Source 4](#)

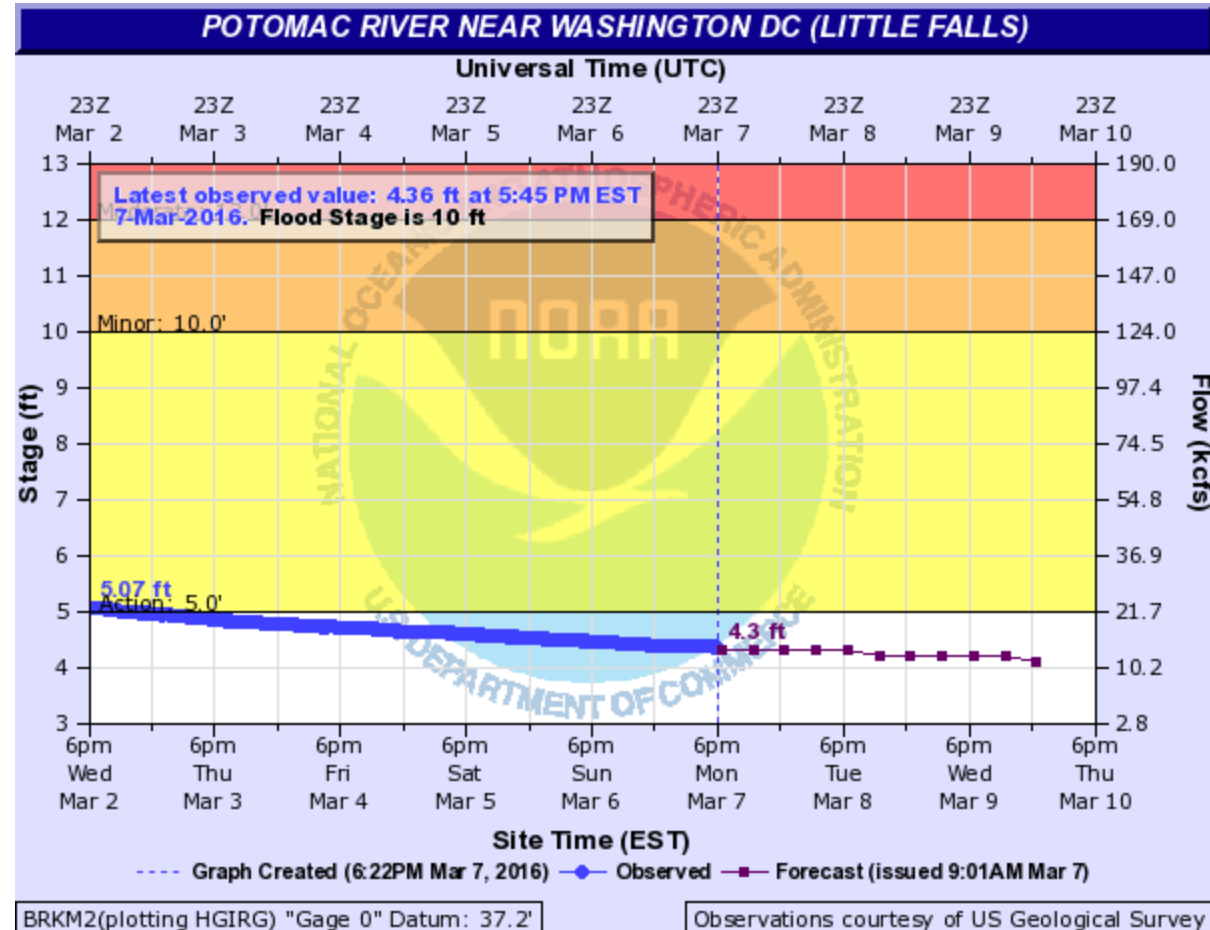
6-10 Day

8-14 Day



Discharge Forecast

- The Potomac is currently running below 5ft and falling for the next few days.

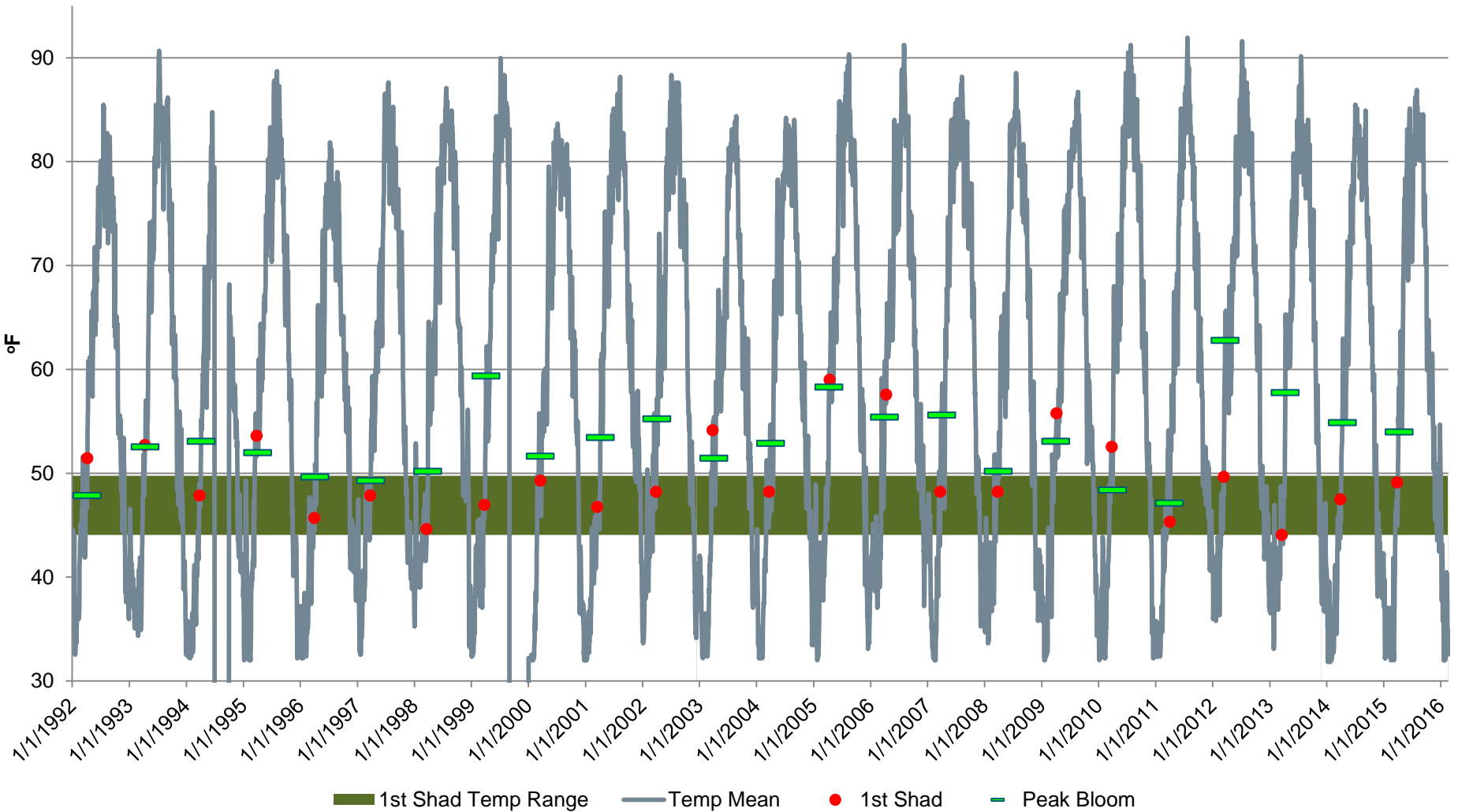




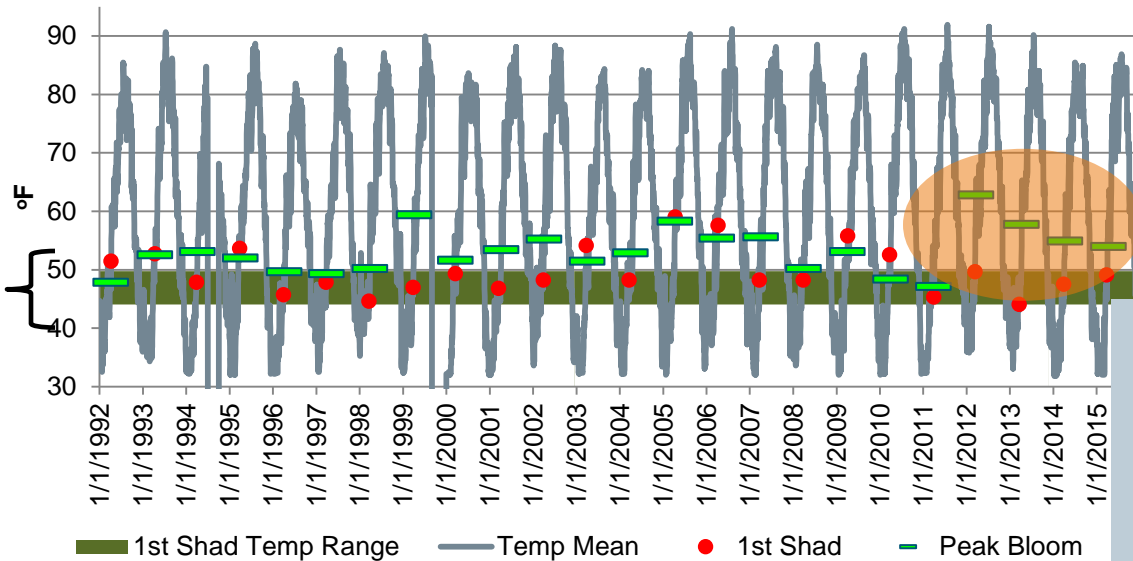
Potomac Shad Data

Appendix

Appendix: Temperature and Cherry Blossom Peak Bloom Data



Appendix: Temperature and Cherry Blossom Peak Bloom Data

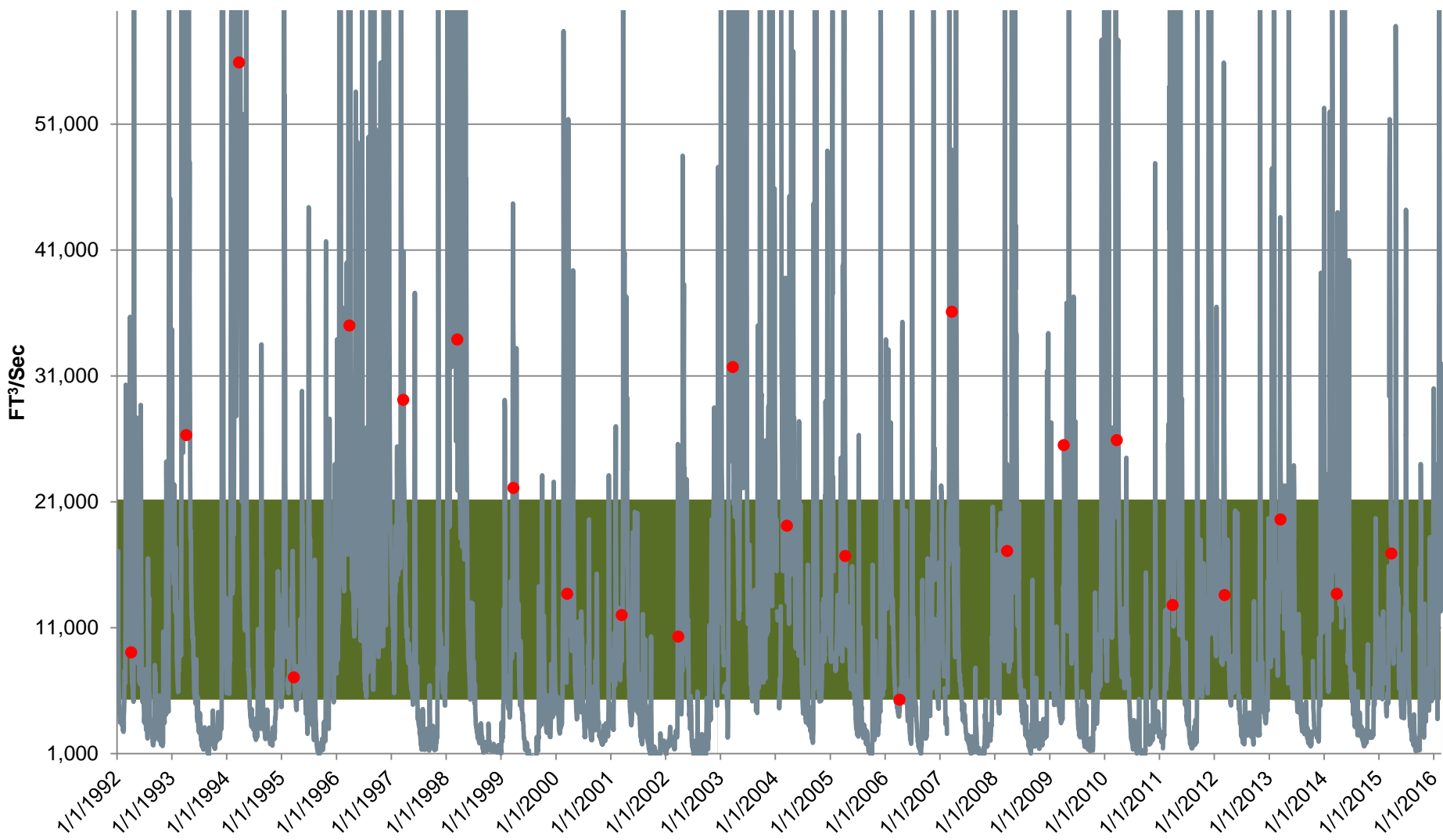


Over the past few years, the peak bloom occurred well after the first shad catch

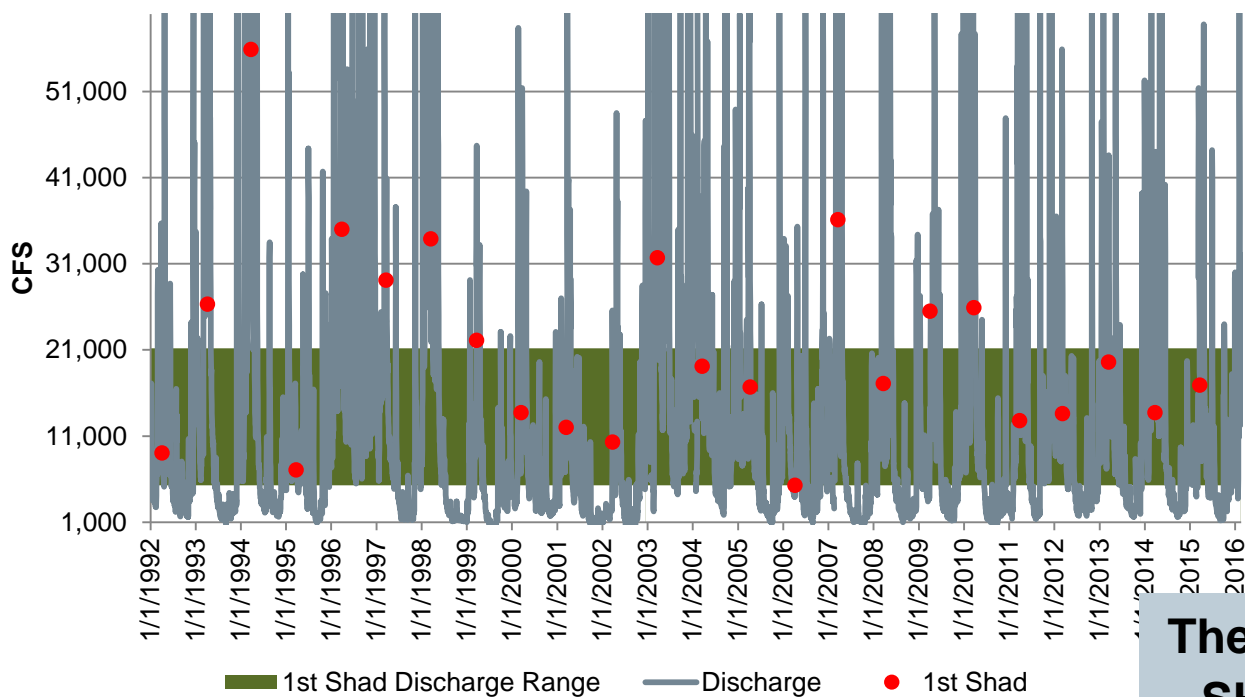
Once water temps have reached 45°-50°F is the best time to try and catch the FIRST SHAD

Keep a close eye on the river temperature gauge. Once the river hits 40°F for the first time, it takes approximately two weeks for the river to reach the desired 45° – 50°F range.

Potomac Discharge Data



Potomac Discharge Data



The optimal flow for the FIRST SHAD is between 5,000 and 21,000 CFS

Be mindful of the river flow. Despite ideal temperatures, it will not be productive or safe to fish in high fast moving water