



# Potomac Shad Forecast

Presented to: TPFR

Date: February 29, 2016

#PilgrimageOfFins - All rights reserved.

© Pilgrimage Outdoors

Lettuce Fly Company LLC.

# Contents

- **PREDICTION TABLE**
- Cherry Blossom Forecast
- Weather Forecast
- Discharge Forecast
- Appendix
  - Historic Temperature and Cherry Blossom Peak Bloom Data
  - Historic Potomac Discharge Data

# PREDICTION TABLE

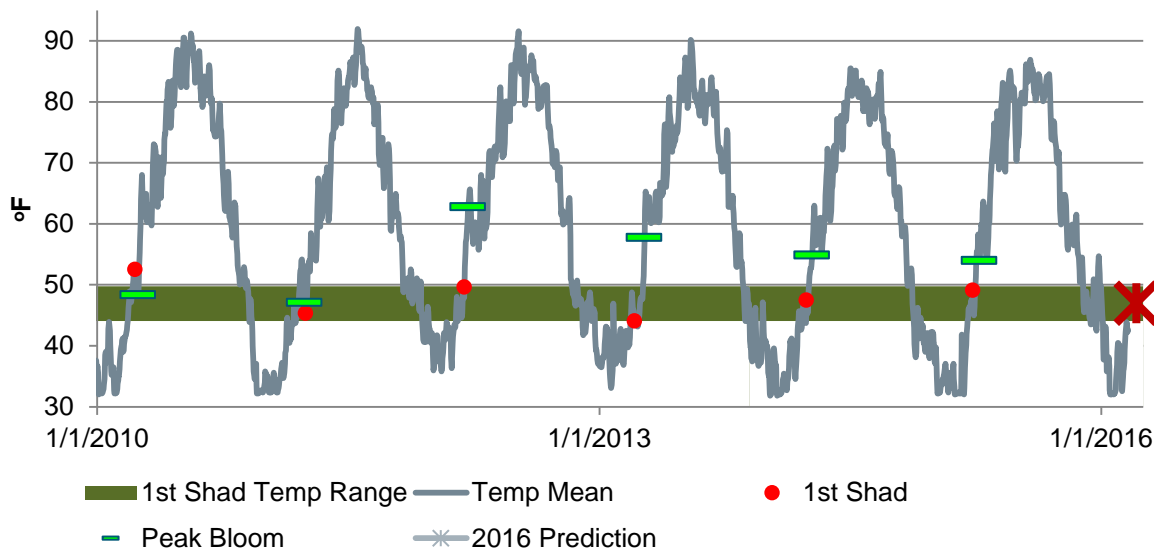
Prediction Table				
Date	Current River Temperature	Current River Discharge	Cherry Blossom Peak Forecast	Shad ETA
2/17/2016	34.88	32,000	TBD	Too soon to tell
2/28/2016	42.62	40,100	TBD	3/19/2016

My first guess is that the first shad will be had as early as March 19<sup>th</sup>. Keep an eye out for weekly updates.

Tight Lines,

Douglas Romaine

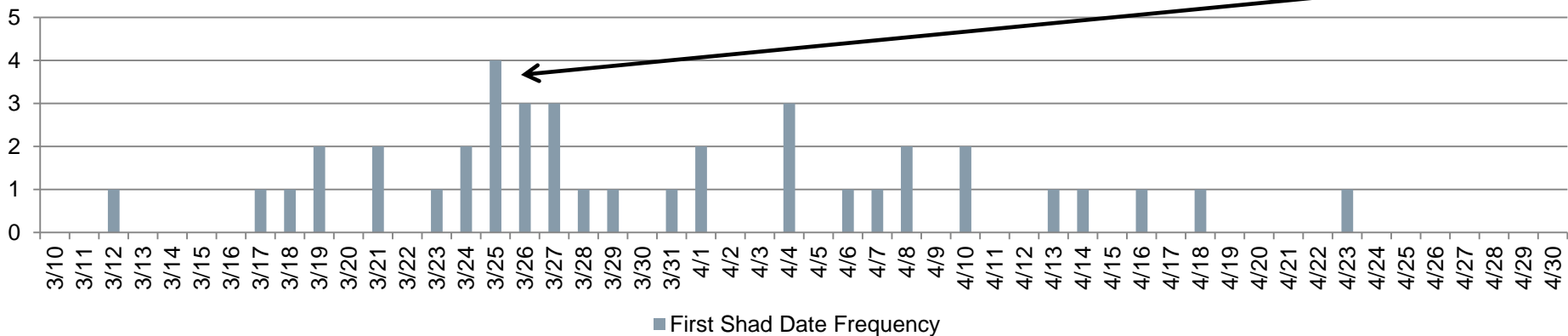
# PREDICTION TABLE



**1<sup>st</sup> prediction:  
3/19/2016**

**Historically, the first  
shad catch has  
occurred the most on  
March 25<sup>th</sup>**

## First Shad Date Frequency



## Cherry Blossom Forecast

- The NPS is scheduled to deliver their first forecast on March 2<sup>nd</sup>. Warmer than average 2015/2016 winter temperatures may mirror conditions which produced the early bloom in 2012 (March 20).
- Keep an eye on the Tidal Basin “[Indicator Tree](#),” as it will yield blooms  $\approx$ 10 days prior to peak bloom.

Winter	December	January	February	March	Peak Bloom Date
2015-16	+11.5	-1.1	+0.4*		?
2014-15	+4.0	-0.4	-8.7	-1.5	April 10
2013-14	+2.6	-3.8	-1.2	-3.9	April 10
2012-13	+5.9	+4.3	-0.7	-3.0	April 9
2011-12	+4.9	+4.7	+5.3	+10	March 20
2010-11		-1.3	+3.6	-0.9	March 29

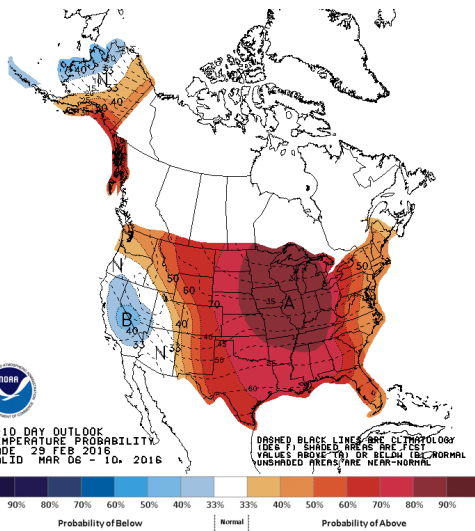
• [Source 1](#), [Source 2](#), [Source 3](#)

# Weather Forecast

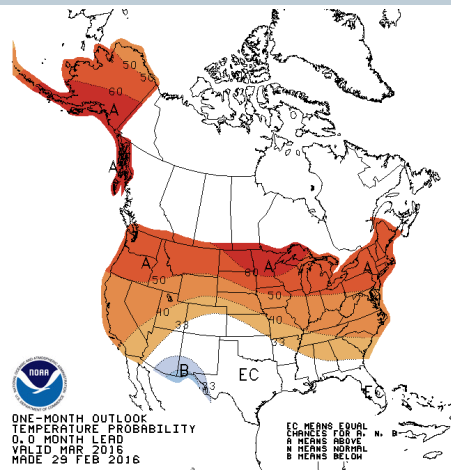
- The latest weather forecasts are in and call for above average temperature for much of March, despite chilly weather during the first week.

• [Source 1](#), [Source 2](#), [Source 3](#), [Source 4](#)

## 6-10 Day



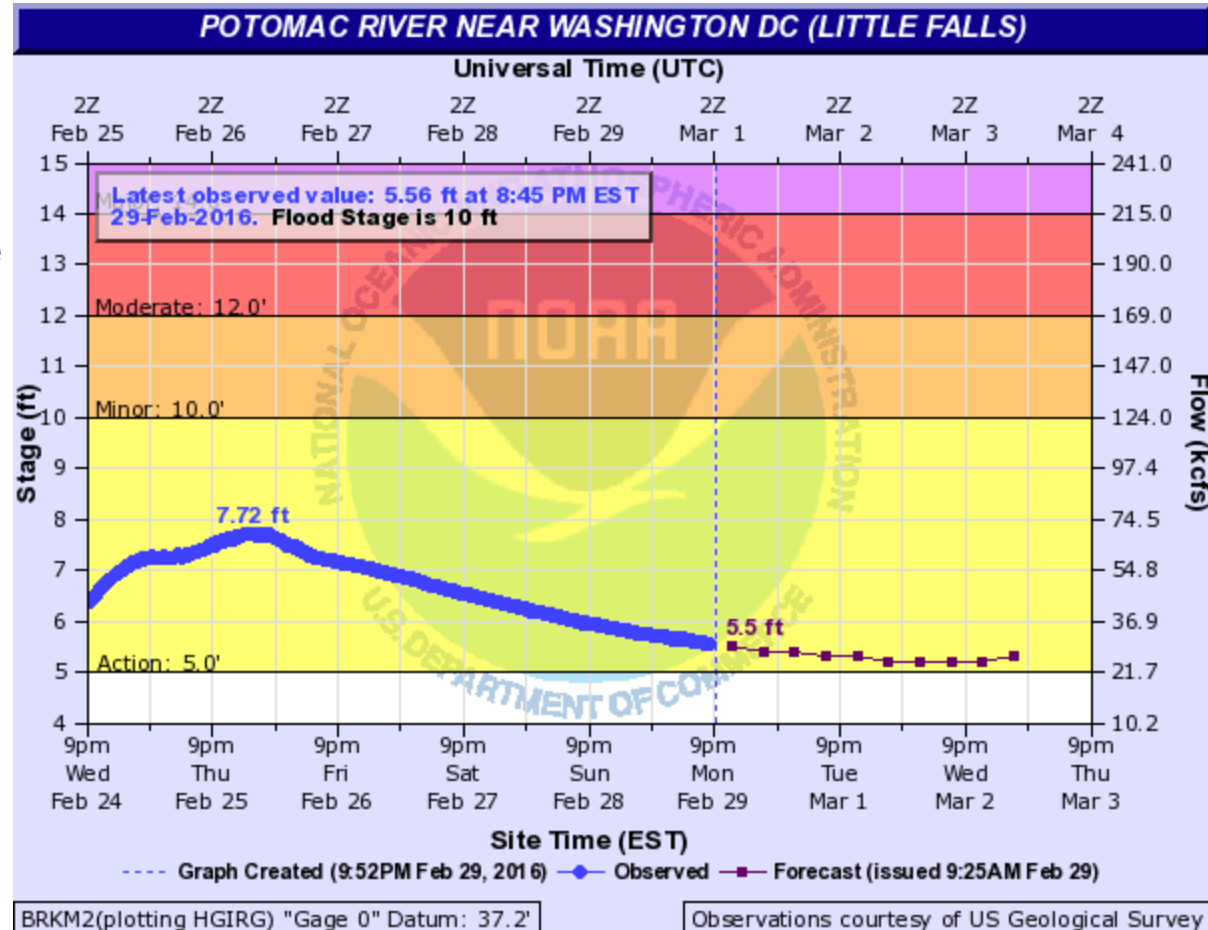
## 8-14 Day



Yesterday 28	Tonight 29	Mar 1	2	3	4	5
Actual Temp 65° Lo 33° Hist. Avg. 50° Lo 33°	Clear Lo 43° Hist. Avg. 51° Lo 34°	Partly sunny and warm 63° Lo 43° Hist. Avg. 51° Lo 34°	Turning sunny; breezy, cooler 49° Lo 32° Hist. Avg. 51° Lo 34°	A blend of sun and clouds 42° Lo 33° Hist. Avg. 51° Lo 34°	Morning flurries; cloudy 45° Lo 33° Hist. Avg. 52° Lo 34°	Mostly cloudy 48° Lo 36° Hist. Avg. 52° Lo 34°
6	7	8	9	10	11	12
Snow or flurries possible 50° Lo 35° Hist. Avg. 52° Lo 35°	Sun and areas of high clouds 57° Lo 42° Hist. Avg. 53° Lo 35°	Partly sunny 63° Lo 46° Hist. Avg. 53° Lo 35°	Cloudy 69° Lo 51° Hist. Avg. 53° Lo 36°	Cloudy 62° Lo 50° Hist. Avg. 54° Lo 36°	Mostly cloudy 69° Lo 51° Hist. Avg. 54° Lo 36°	Rain and a t-storm possible 70° Lo 41° Hist. Avg. 54° Lo 36°
13	14	15	16	17	18	19
A couple of showers possible 54° Lo 44° Hist. Avg. 55° Lo 37°	Considerable clouds 58° Lo 45° Hist. Avg. 55° Lo 37°	Rain becoming steadier 60° Lo 47° Hist. Avg. 56° Lo 37°	Windy with clouds 60° Lo 45° Hist. Avg. 56° Lo 38°	Mostly sunny 58° Lo 43° Hist. Avg. 56° Lo 38°	Partly sunny 57° Lo 41° Hist. Avg. 56° Lo 38°	<b>1st Shad?</b> 55° Lo 39° Hist. Avg. 57° Lo 38°
20	21	22	23	24	25	26
Cloudy with occasional rain 51° Lo 35° Hist. Avg. 57° Lo 39°	Mostly cloudy 49° Lo 33° Hist. Avg. 58° Lo 39°	Partly sunny 49° Lo 34° Hist. Avg. 58° Lo 39°	Mostly sunny 50° Lo 33° Hist. Avg. 58° Lo 40°	Couple of thunderstorms 50° Lo 34° Hist. Avg. 59° Lo 40°	Mostly sunny 52° Lo 34° Hist. Avg. 59° Lo 40°	A couple of morning showers 50° Lo 34° Hist. Avg. 59° Lo 40°
27	28	29	30	31	Apr 1	2
Clouds and sun 66° Lo 49° Hist. Avg. 60° Lo 41°	Spotty afternoon showers 66° Lo 48° Hist. Avg. 60° Lo 41°	Colder with periods of rain 60° Lo 49° Hist. Avg. 60° Lo 41°	Periods of rain 60° Lo 41° Hist. Avg. 61° Lo 42°	Mostly sunny 57° Lo 39° Hist. Avg. 61° Lo 42°	Mostly sunny 58° Lo 43° Hist. Avg. 62° Lo 42°	Partly sunny 57° Lo 45° Hist. Avg. 62° Lo 43°

# Discharge Forecast

- The Potomac is currently running high and dirty, and expected to remain about the 5ft mark for the next few days.



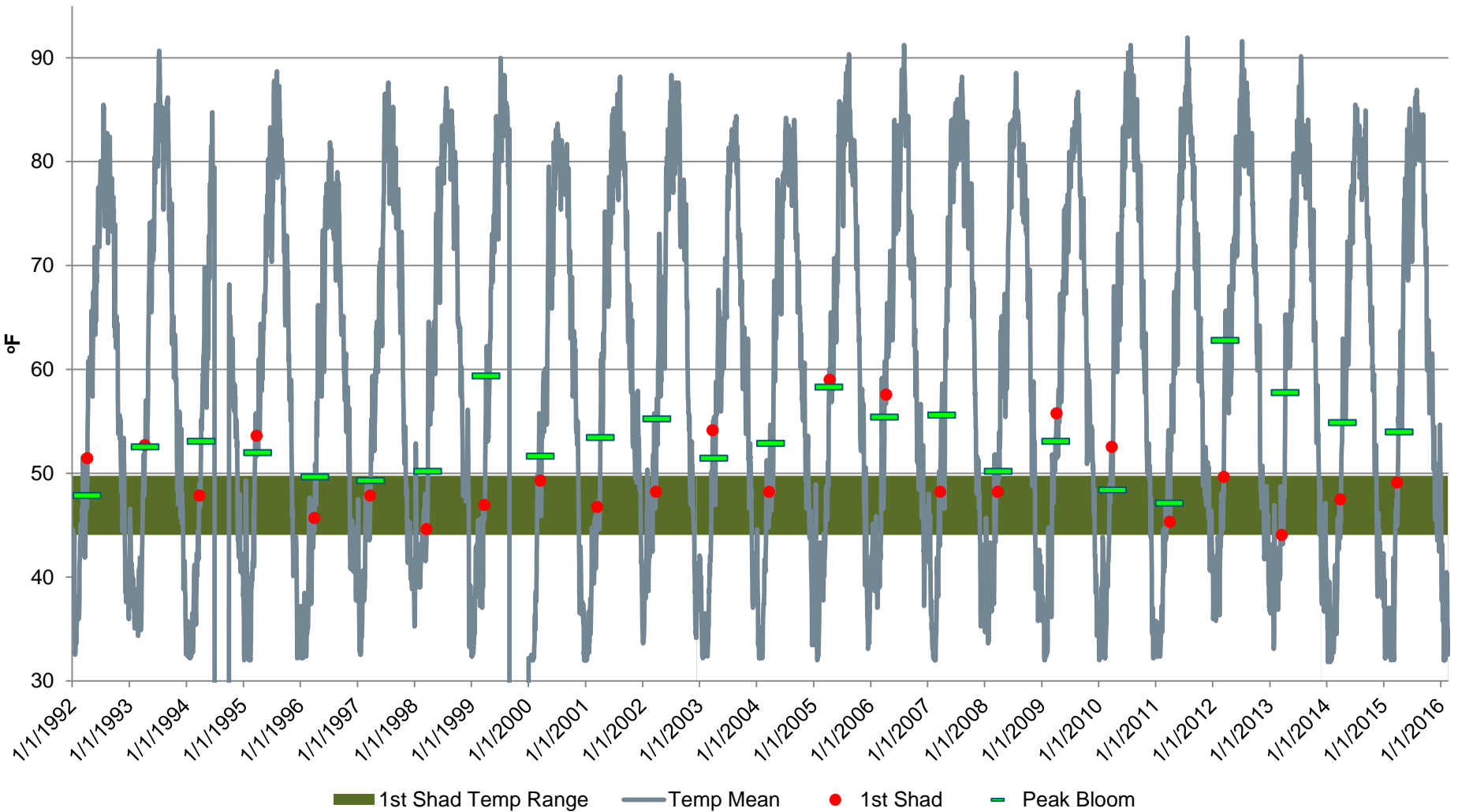


Potomac Shad Data

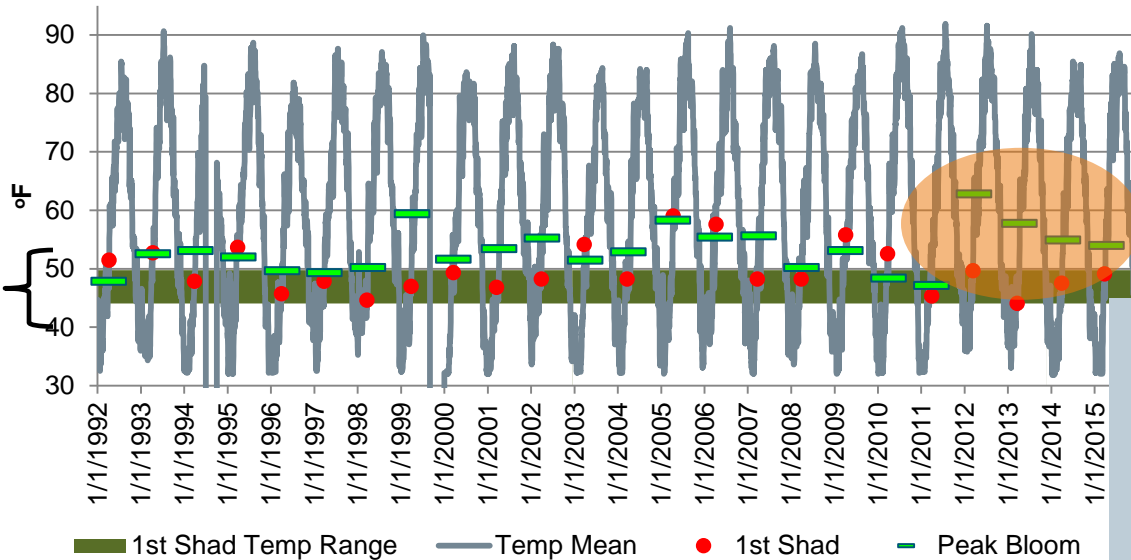
# Appendix



# Appendix: Temperature and Cherry Blossom Peak Bloom Data



# Appendix: Temperature and Cherry Blossom Peak Bloom Data

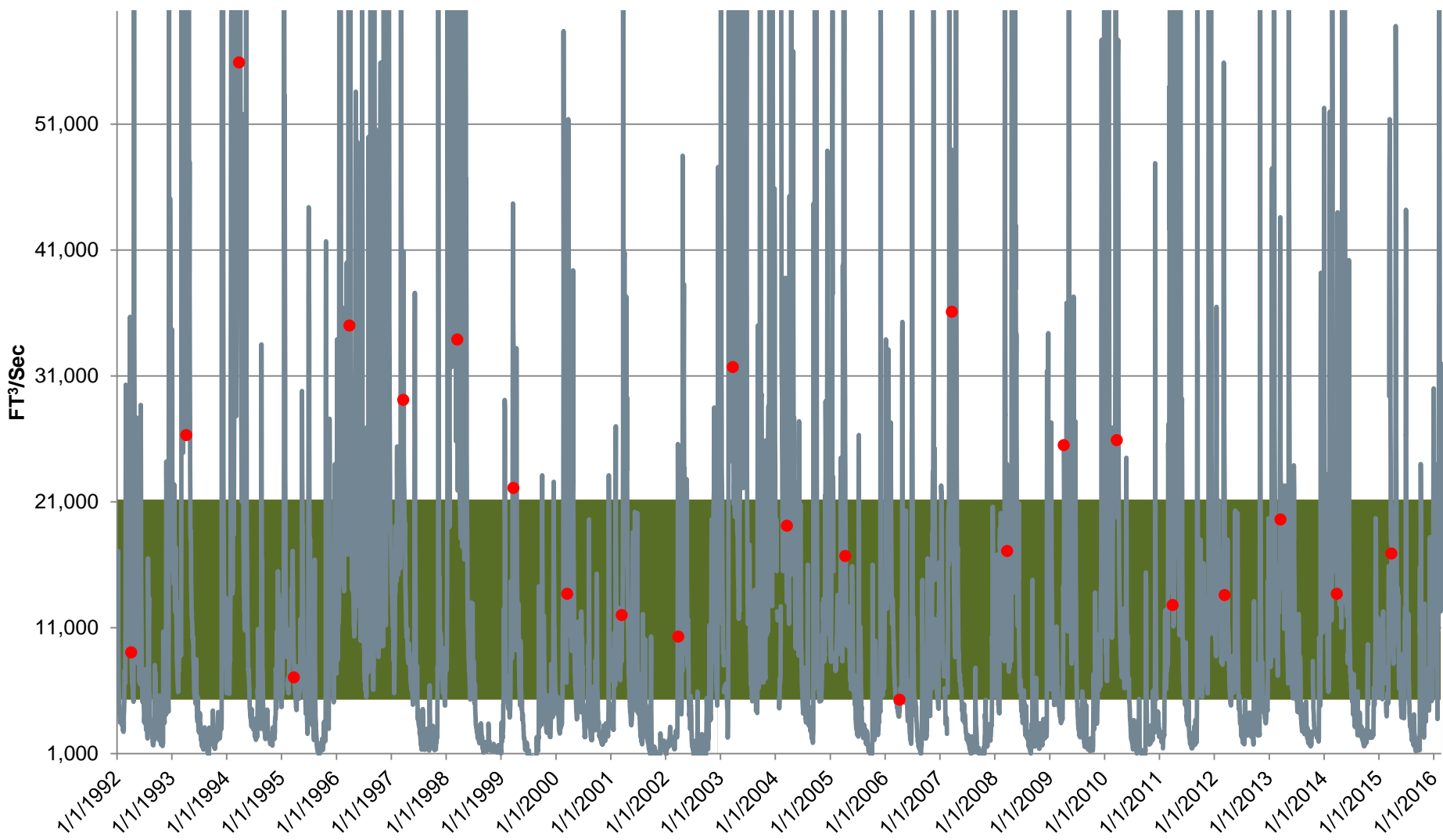


Over the past few years, the peak bloom occurred well after the first shad catch

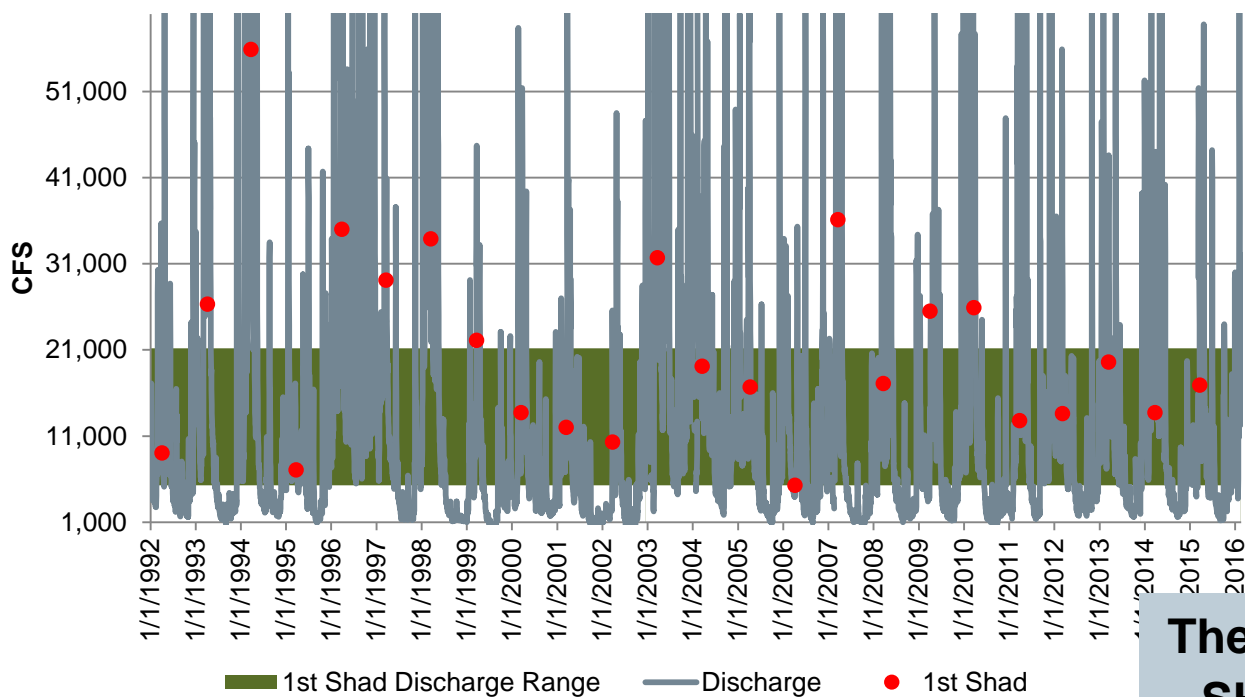
Once water temps have reached 45°-50°F is the best time to try and catch the FIRST SHAD

Keep a close eye on the river temperature gauge. Once the river hits 40°F for the first time, it takes approximately two weeks for the river to reach the desired 45° – 50°F range.

# Potomac Discharge Data



# Potomac Discharge Data



**The optimal flow for the FIRST SHAD is between 5,000 and 21,000 CFS**

**Be mindful of the river flow. Despite ideal temperatures, it will not be productive or safe to fish in high fast moving water**