

# WHNA/TAT Bike Tour: Marys Annexation & West Hills Road

April 8, 2023

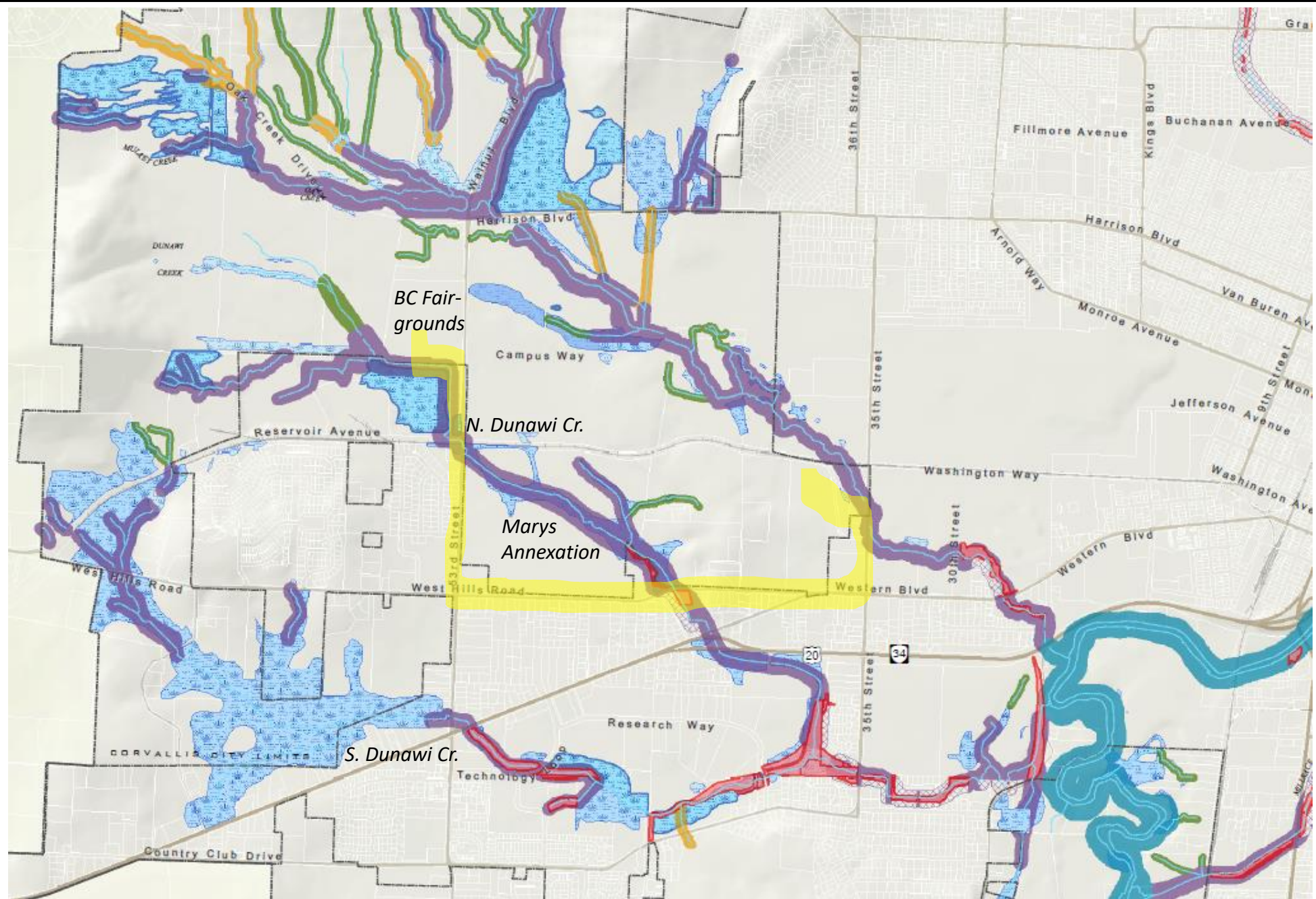
Daniel Wood (President, West Hills Neighborhood Association)

Steve Starcevich (Leader, Transportation Action Team)

# Wetlands & Tour Map

## LEGEND

- Corvallis City Limits
- Urban Growth Boundary
- Streams
  
- 50-Foot Riparian Corridor  
(Where drainage basin <20 acres.)
- High Protection
- Partial Protection
  
- 75-Foot Riparian Corridor  
(Where drainage basin 20-160 acres.)
- High Protection
- Partial Protection
  
- 100-Foot Riparian Corridor  
(Where drainage basin >160 acres.)
- High Protection
- Partial Protection
  
- 120-Foot Riparian Corridor  
(Willamette and Mary's Rivers  
except Downtown)
- High Protection
- Partial Protection
  
- Proximate Wetlands  
Adjacent to Riparian Corridors
- High Protection
- Partial Protection
  
- Open Space and Drainage Areas  
(including dedications and easements - other areas  
may exist which are not yet included on the map.)
- 
  
- Locally Protected Wetlands
- Locally Protected Locally Significant Wetlands
- Wetlands of Special Significance



Source: City of Corvallis, Geospatial Information Services, Public Works Department (2006)



# 53<sup>rd</sup> Street Overcrossing

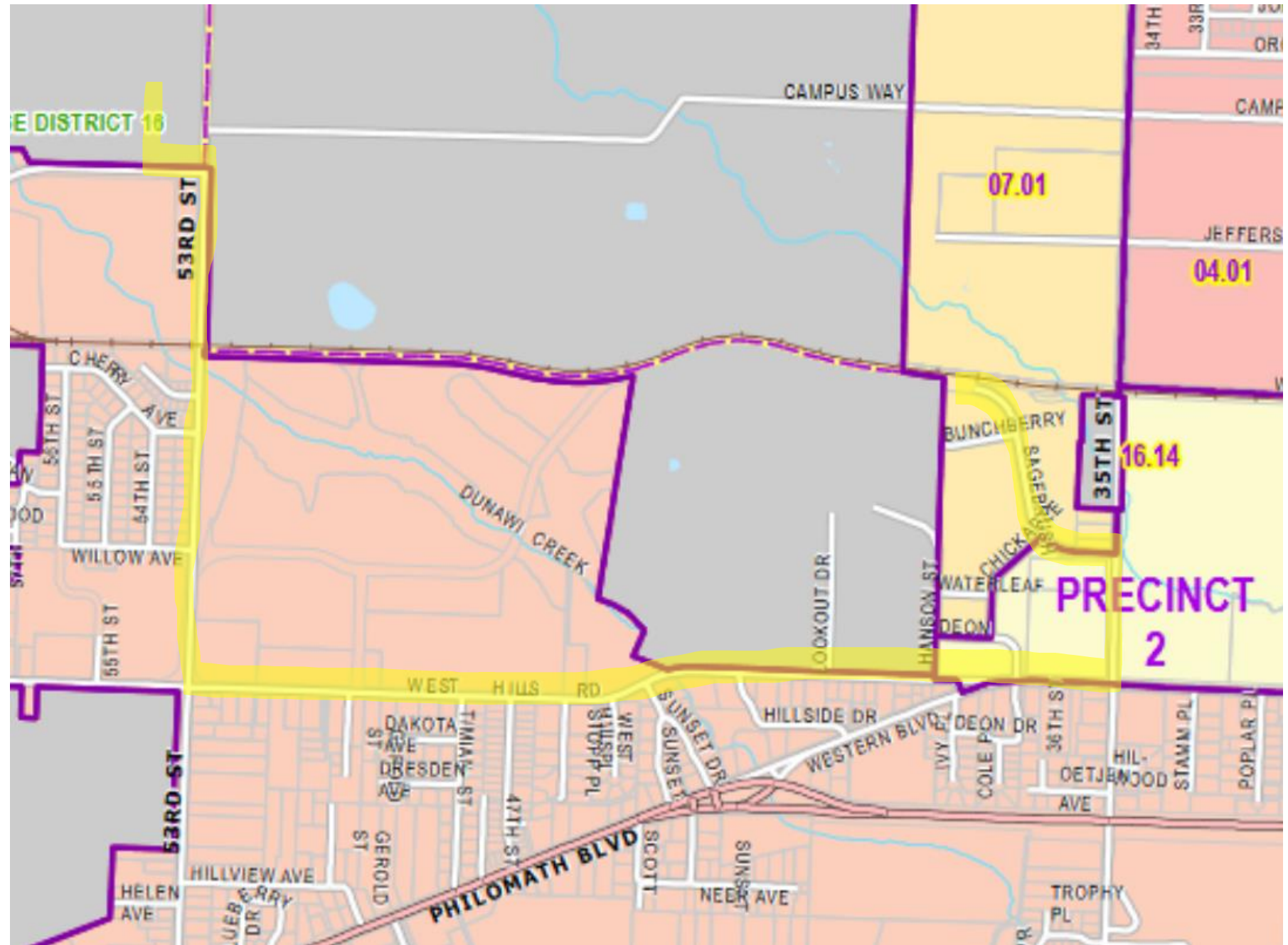
(birds-eye view looking SE)



*Source: Benton County Community meeting  
presentation on November 14, 2017*



# Marys Annexation Overview

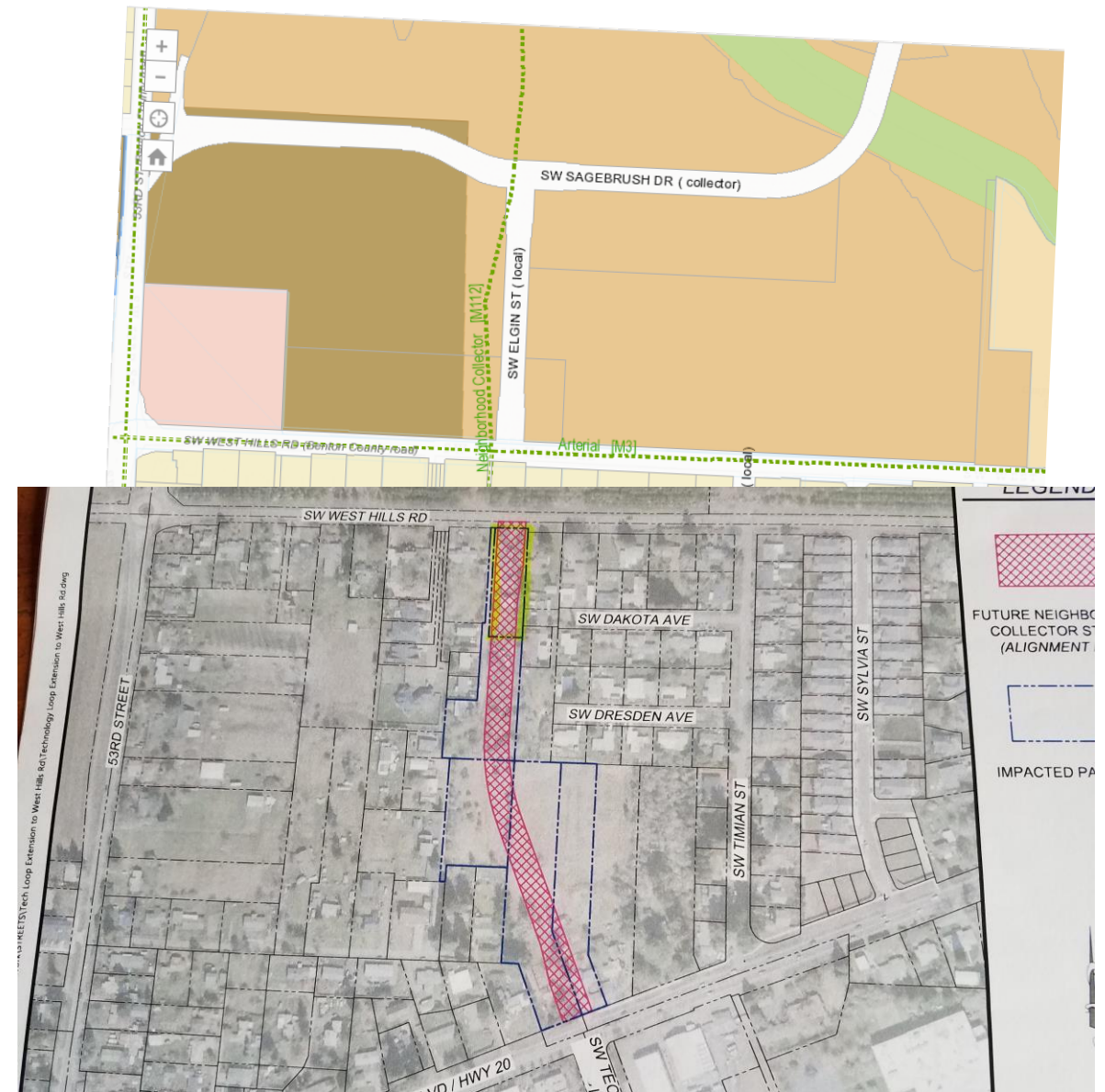
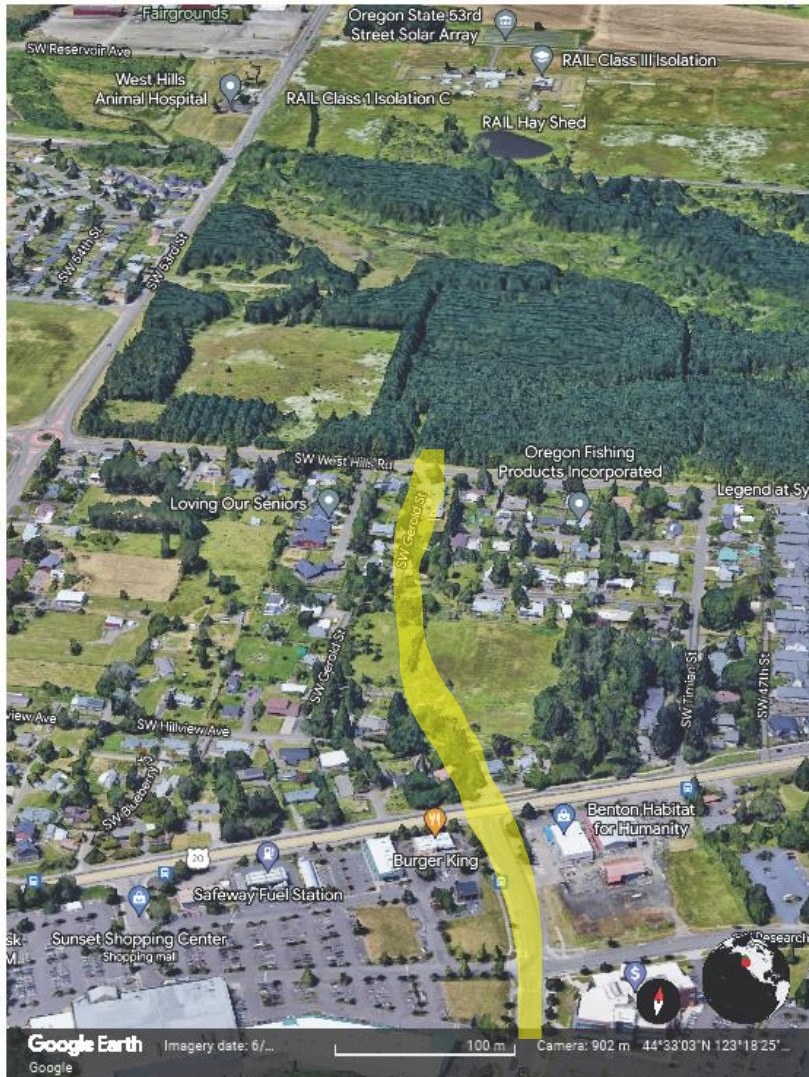


Source:



# New collector proposed

(From SW Gerold Street to Technology Loop Road)



# For more information:

- Benton County - 53<sup>rd</sup> Street Overcrossing:
  - <https://www.co.benton.or.us/publicworks/project/53rd-street-rr-overpass>
- City of Corvallis & Benton County - SW West Hills Road Corridor Plan:
  - <https://www.co.benton.or.us/publicworks/project/sw-west-hills-road-corridor-plan>
- West Hills Neighborhood Association
  - <https://www.corvallisoregon.gov/cd/page/west-hills-neighborhood>
- Transportation Action Team (TAT)
  - Join the TAT google group for email updates about this project & sustainable transportation
  - <https://sustainablecorvallis.org/what-we-do/action-teams/transportation/>