

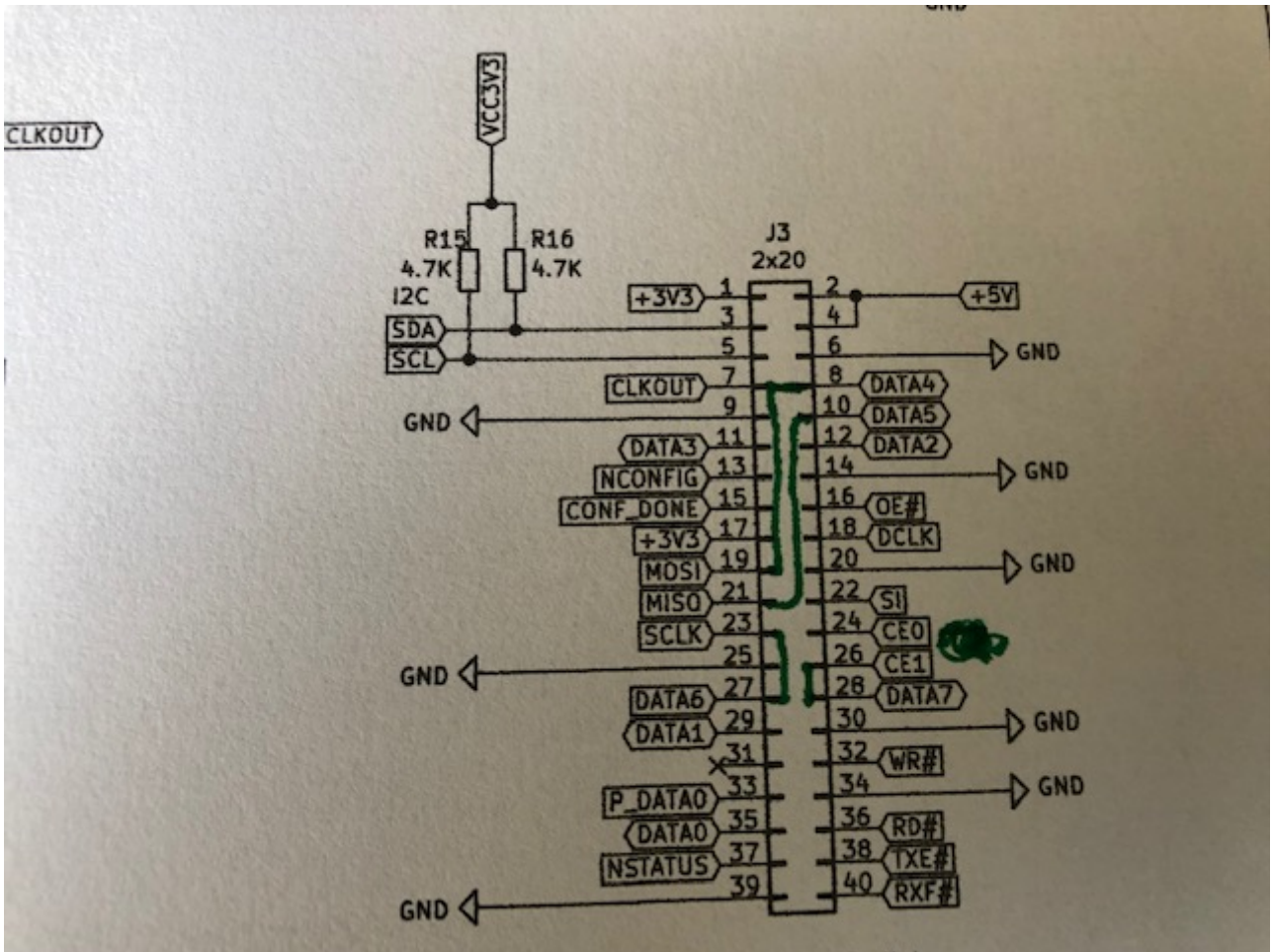
Radioberry Juice board

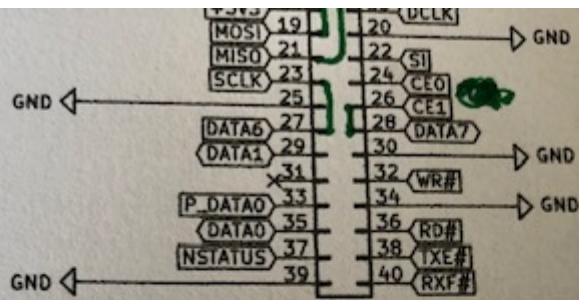
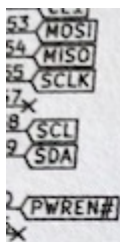
Hereby a description of the software setup and hardware modifications.

Hardware mods described are based on the beta 0.1. Showing the schematic changes but also the PCB changes.

There is only a gateway for the radioberry using a Cyclone CL025 available.

3. IO connections





Connect to Radioberry

CUT!
 - CE1 track
 - SCLK "
 - MOSI "
 - MISO "

wire pin 8-19
 10-21
 27-23
 26-28

PA3GSB Johan Maas

AppMind

Sheet: /

File: radioberry-juice.sch

Title: Radioberry-juice

Size: A4

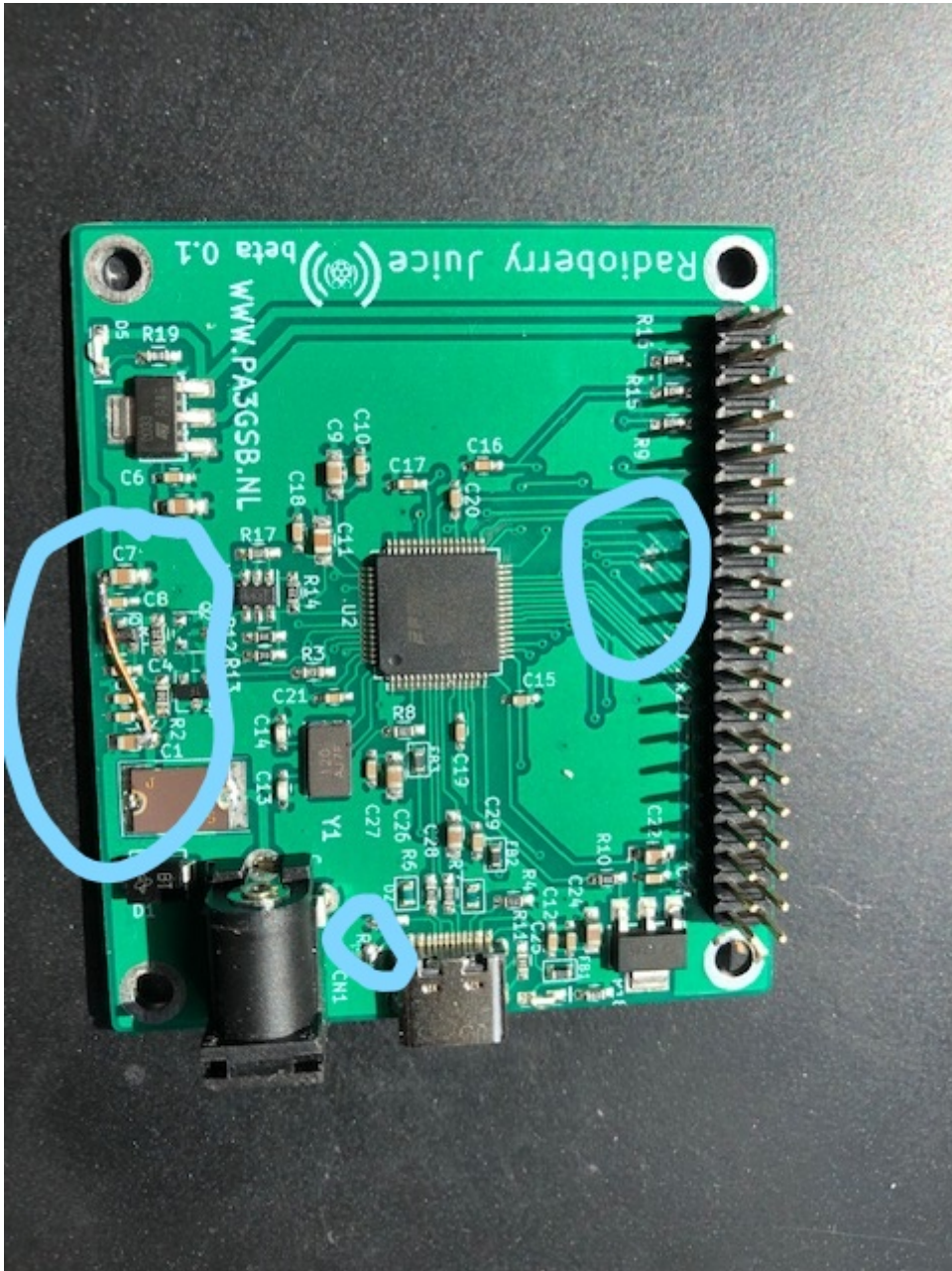
Date: 2021-01-19

Rev: Beta-0.

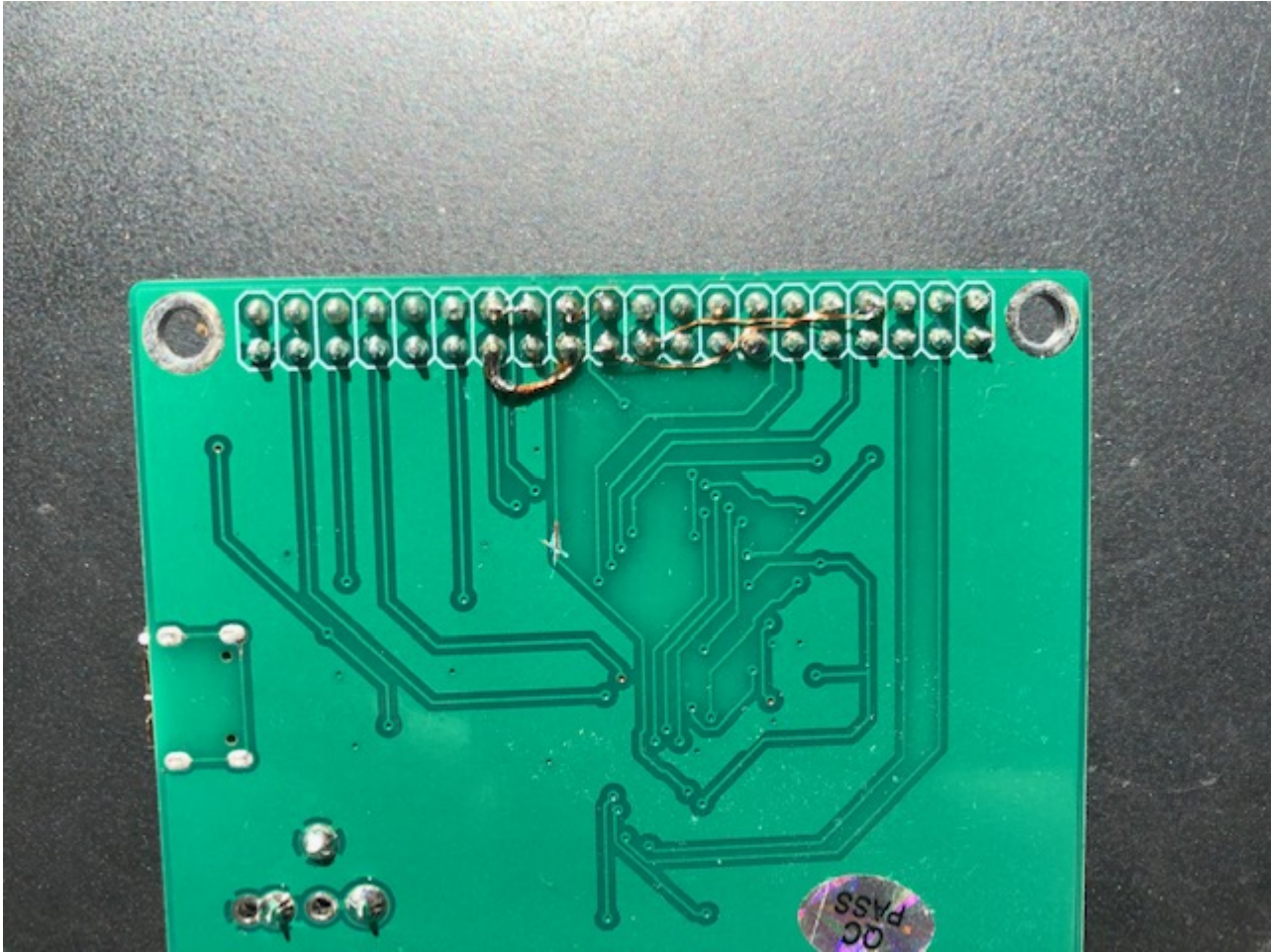
KiCad E.D.A. kicad (5.1.8)-1

Id: 1/1

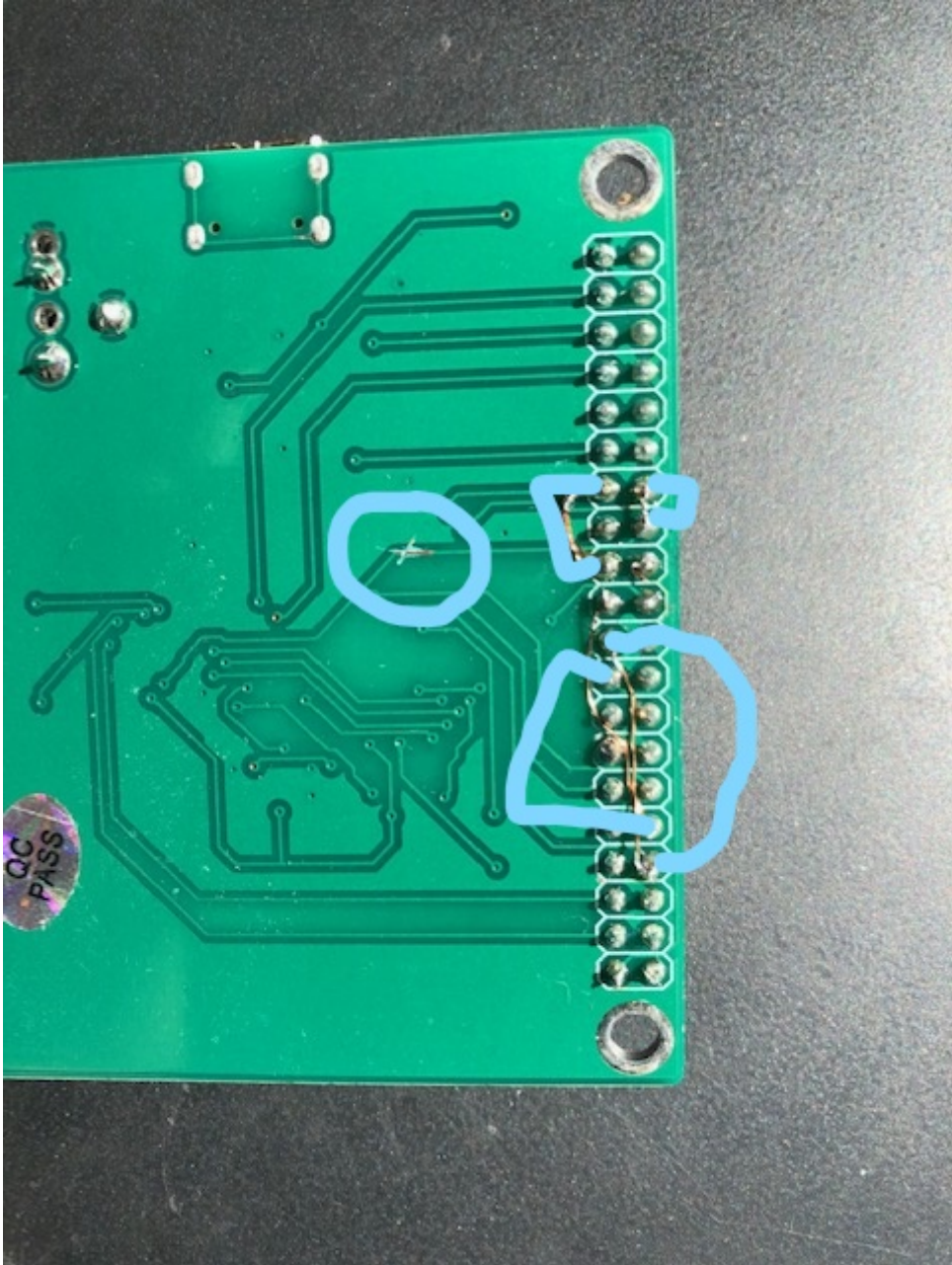
Marked changes:



Bottom side mods:



Marked changes:



Windows 10 software setup:

Install drivers;

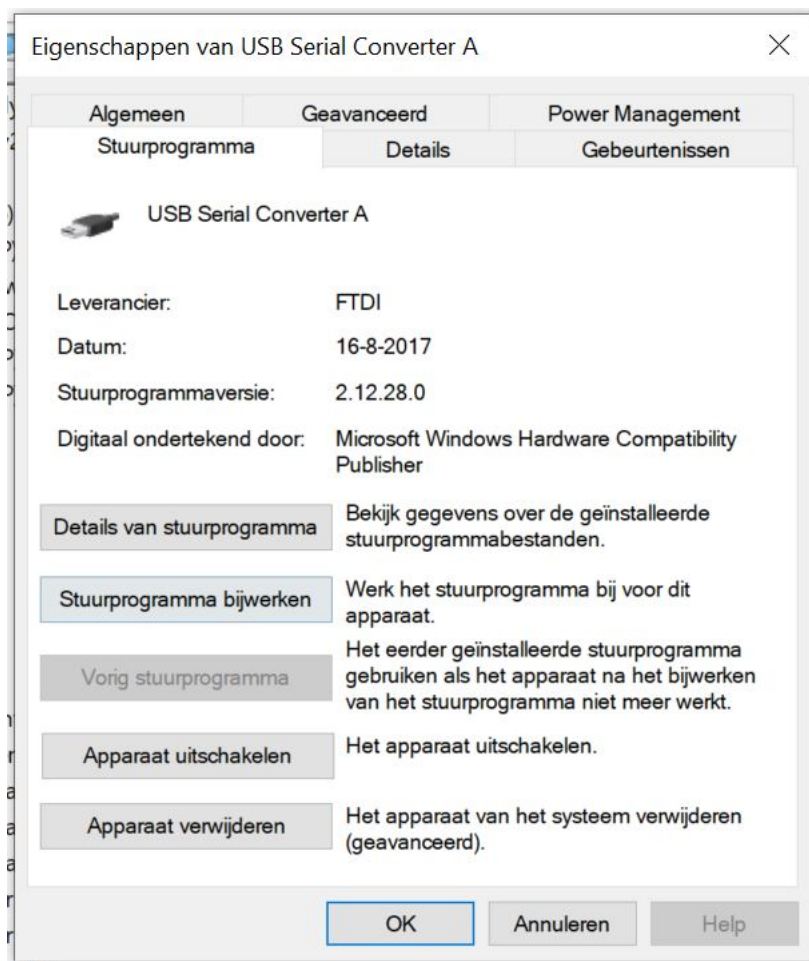
download the drivers from FTDI site:

<https://ftdichip.com/drivers/d2xx-drivers/>

Device management:



In dutch ...some driver details:

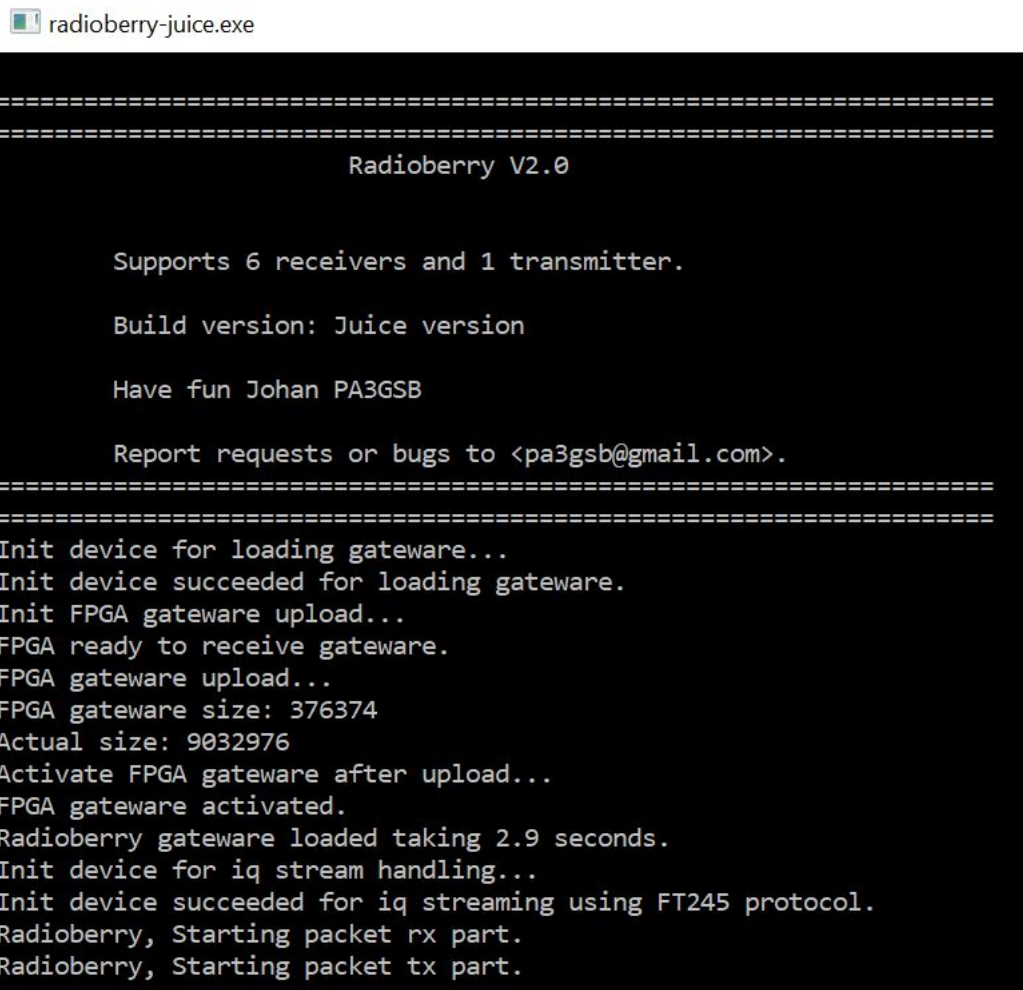


https://drive.google.com/file/d/1LfUrK8kM_YoO8rlOGOZY9th0F2e8EK-2/view?usp=sharing

unzip : radioberry-juice.zip

Change folder and open a command window and start radioberry-juice

Accept some window defender messages if applicable.



```
radioberry-juice.exe
=====
Radioberry V2.0

Supports 6 receivers and 1 transmitter.

Build version: Juice version

Have fun Johan PA3GSB

Report requests or bugs to <pa3gsb@gmail.com>.
=====
Init device for loading gateway...
Init device succeeded for loading gateway.
Init FPGA gateway upload...
FPGA ready to receive gateway.
FPGA gateway upload...
FPGA gateway size: 376374
Actual size: 9032976
Activate FPGA gateway after upload...
FPGA gateway activated.
Radioberry gateway loaded taking 2.9 seconds.
Init device for iq stream handling...
Init device succeeded for iq streaming using FT245 protocol.
Radioberry, Starting packet rx part.
Radioberry, Starting packet tx part.
```

Start SparkSDR and you are in business...

Have fun

73 Johan
PA3GSB