



**THE SOUTH AFRICAN NATIONAL ROADS  
AGENCY SOC LIMITED**

**CONTRACT NRA R.024-010-2012/1**

**UPGRADE OF NATIONAL ROAD R24 FROM THE N4  
TO BUITEN STREET AT RUSTENBURG**

**ADDENDUM NO. 3**

**CHIEF EXECUTIVE OFFICER  
SOUTH AFRICAN NATIONAL ROADS AGENCY LIMITED  
48 TAMBOTIE AVENUE  
VAL DE GRACE  
PRETORIA  
0184**

## DISTRIBUTION LIST – CONTRACT NRA R.024-010-2012/1

NAME	COMPANY	E-MAIL
Garth Strong	Delta Bloc South Africa	<a href="mailto:garth@deltablocsa.co.za">garth@deltablocsa.co.za</a>
Elias	Mivami Construction	<a href="mailto:mivami@absamail.co.za">mivami@absamail.co.za</a>
Francois Kemp	QB JV	<a href="mailto:fkemp@wenhaus.co.za">fkemp@wenhaus.co.za</a>
Richard Stone	M Civils	<a href="mailto:richard@mcivils.co.za">richard@mcivils.co.za</a>
Jaco vd Westhuizen	Sectional Poles	<a href="mailto:jaco@sectionalpoles.co.za">jaco@sectionalpoles.co.za</a>
Hendrik Vermeulen	Beka	<a href="mailto:vermeulenh@beka.co.za">vermeulenh@beka.co.za</a>
R Botha	Roadcrete Africa	<a href="mailto:amins@roadcrete.co.za">amins@roadcrete.co.za</a>
Wessel van Deventer	Stefanutti Stocks Roads & Earthworks	<a href="mailto:tenders.ew@stefstocks.com">tenders.ew@stefstocks.com</a>
Hennie van Heerden	Bophelong Construction	<a href="mailto:h.vanheerden@bopcons.co.za">h.vanheerden@bopcons.co.za</a>
Oupa Mabe	Roucomm Systems	<a href="mailto:oupamabe@vodamail.co.za">oupamabe@vodamail.co.za</a> <a href="mailto:puleov@lantic.net">puleov@lantic.net</a>
M d'Oliviera	Chavani	<a href="mailto:mark@chavani.co.za">mark@chavani.co.za</a>
Jaco Gerritse	iMvula Roads & Civils	<a href="mailto:tenders@advanceroads.co.za">tenders@advanceroads.co.za</a>
Hennie Kotzé	SANRAL	<a href="mailto:kotzeh@nra.co.za">kotzeh@nra.co.za</a>
Greg van Wyk	Much Asphalt	<a href="mailto:greg.vanwyk@murrob.com">greg.vanwyk@murrob.com</a>
Bereng	Moseme Road Construction	<a href="mailto:office@moseme.co.za">office@moseme.co.za</a>
Asif Hansrod	Civcon Civil Engineering	<a href="mailto:asif@civcon.co.za">asif@civcon.co.za</a>
Stephan Venter	QPH/Expectra 388 CC JV	<a href="mailto:tenders@qph.co.za">tenders@qph.co.za</a>
Henk Swanepoel	King Civil Engineering	<a href="mailto:mike@kingcivil.co.za">mike@kingcivil.co.za</a>
Rynhardt van Wyk	Weiss Seuns Trust	<a href="mailto:wst@iburst.co.za">wst@iburst.co.za</a>
F Schoeman	Ultimate Dynamic	<a href="mailto:tony@ultimatedynamic.co.za">tony@ultimatedynamic.co.za</a>
Gregory Mettam	DipCivils (Pty) Ltd	<a href="mailto:greg@dipcivils.com">greg@dipcivils.com</a>
Jacob	PMJ Seloane Construction	Fax: 014 565 2022
Martin	Lethuloe Trading & Projects (Pty) Ltd	<a href="mailto:klethuloe@gmail.com">klethuloe@gmail.com</a>
Sammy Phalone	Greenbuds Logistics	<a href="mailto:greenbuds@executivemail.co.za">greenbuds@executivemail.co.za</a>
H van Aswegen	National Asphalt	<a href="mailto:hardus@nationalasphalt.co.za">hardus@nationalasphalt.co.za</a>
N Pretorius	Jodan Construction	<a href="mailto:nico@jodangroup.co.za">nico@jodangroup.co.za</a>
Gordon Arons	Beka	<a href="mailto:aronsg@beka.co.za">aronsg@beka.co.za</a>
Ben Ras	Matrolab Group	<a href="mailto:benr@matrolab.co.za">benr@matrolab.co.za</a>
Hantie Nel	Raubex	<a href="mailto:hantie@nationalasphalt.co.za">hantie@nationalasphalt.co.za</a>
Danny Dikutle	Phumi Trading MGM Solutions JV	<a href="mailto:d.dikutle@gmail.com">d.dikutle@gmail.com</a>
Thomas Kgosi	JST Construction	<a href="mailto:jstqss@mweb.co.za">jstqss@mweb.co.za</a>
Justin Sampson	Vusela Construction	<a href="mailto:paulr@vuselaconstruction.co.za">paulr@vuselaconstruction.co.za</a>
E Grimbeek	Empyreal	<a href="mailto:hq@empyreal.co.za">hq@empyreal.co.za</a>
D Zorzi	Civilcon	<a href="mailto:dante@civilcon.co.za">dante@civilcon.co.za</a>
F Maritz	WBHO	<a href="mailto:fransm@wbho.co.za">fransm@wbho.co.za</a>
N Aphane	Boitumelo FSG Projects (Pty) Ltd	<a href="mailto:nicoaphane@gmail.com">nicoaphane@gmail.com</a>
R de Beer	Crusher (Ricrete)	<a href="mailto:rjdebeer@lantic.net">rjdebeer@lantic.net</a>
R Morris	Liviero Civils	<a href="mailto:christim@liviero.com">christim@liviero.com</a>
F van Niekerk	Paramount Construction	<a href="mailto:tenders@paramountcivil.co.za">tenders@paramountcivil.co.za</a>
PR Ramatsoma	MACP Construction	<a href="mailto:makapane@macp.co.za">makapane@macp.co.za</a>
Nico Holtzhausen	KPMM Roads & Earthworks	<a href="mailto:nholtzhausen@kpmm.co.za">nholtzhausen@kpmm.co.za</a>



## **THIS ADDENDUM IS TO BE READ IN CONJUNCTION WITH AND SHALL BE DEEMED TO BE PART OF THE CONTRACT DOCUMENTS**

### **TENDER ADDENDUM NO 3**

#### **3.1 ADDITIONAL INFORMATION OF THE SANRAL F-SHAPE BARRIER – PART C3 CLAUSE B1503(b)**

The attached plan TD-S-MB-5006-V2 shows the placing of the F-shape barrier with its stability block.

#### **3.2 REVISED INFORMATION ON THE BRIDGE JOINTS**

On the bridge drawings B2229B/04, 06 and 14 as well as on B2229B/OP2/04 and 06, ignore the note referring to “BSP40 or similar expansion joint”.

The required joint is as described in the Pricing Schedules pay item B66.05(a).

#### **3.3 REVISED INFORMATION ON THE MASS OF THE OPTION 2 BRIDGE DECK**

In the Pricing Schedule on page C2-51, Schedule B Option 2 pay item 2/F12X.03, the mass of the deck of this option is 2 200 ton.

#### **3.4 PASSWORD TO UNLOCK THE PRICING SCHEDULE AND CORRECTION OF A PAY ITEM**

3.4.1 Problems are experienced to insert rates in some Excel cells. Please unlock the Pricing Schedule so that it can be completed, by executing the following:

On the top task bar, click on “Review”, choose “Unprotect sheet” and type in password: **1q2w3e4r**.

(Note: Phone our Heléne Grassman at Cell: 083 258 9133 should you have problems with the above.)

3.4.2 Then in Schedule C Part C pay item B56.12(a) insert “7,000,000.00” (7 million) in the rate column.

3.4.3 The decimal places in the percentages are set to “0”, thus rounded to the nearest integer. To change this, right click on the rate column, choose format cells, and change decimal places to “1”.

### **3.5 AMENDED REQUIREMENT**

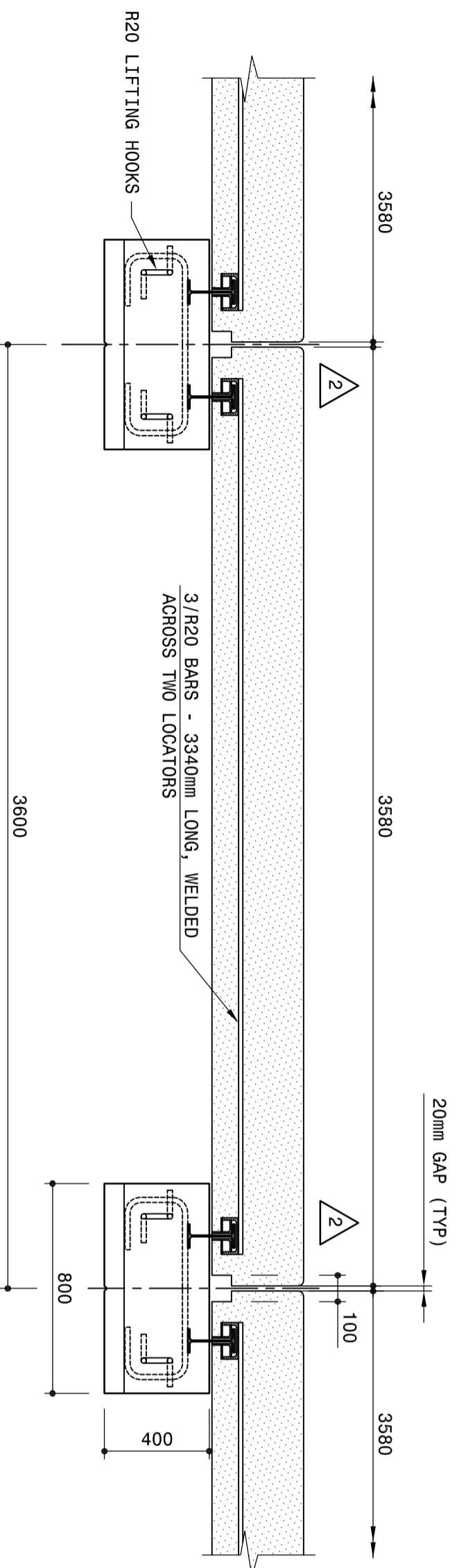
In Part C4 clause C4.13(a), it is required that the contact details of the supplier for the road layerworks, and test results on the various materials by a reputable materials laboratory be submitted with the tender.

Do not submit the information with the tender, however keep it at hand as it will have to be presented at a possible interview after the tender closure.

Addendum compiled by:

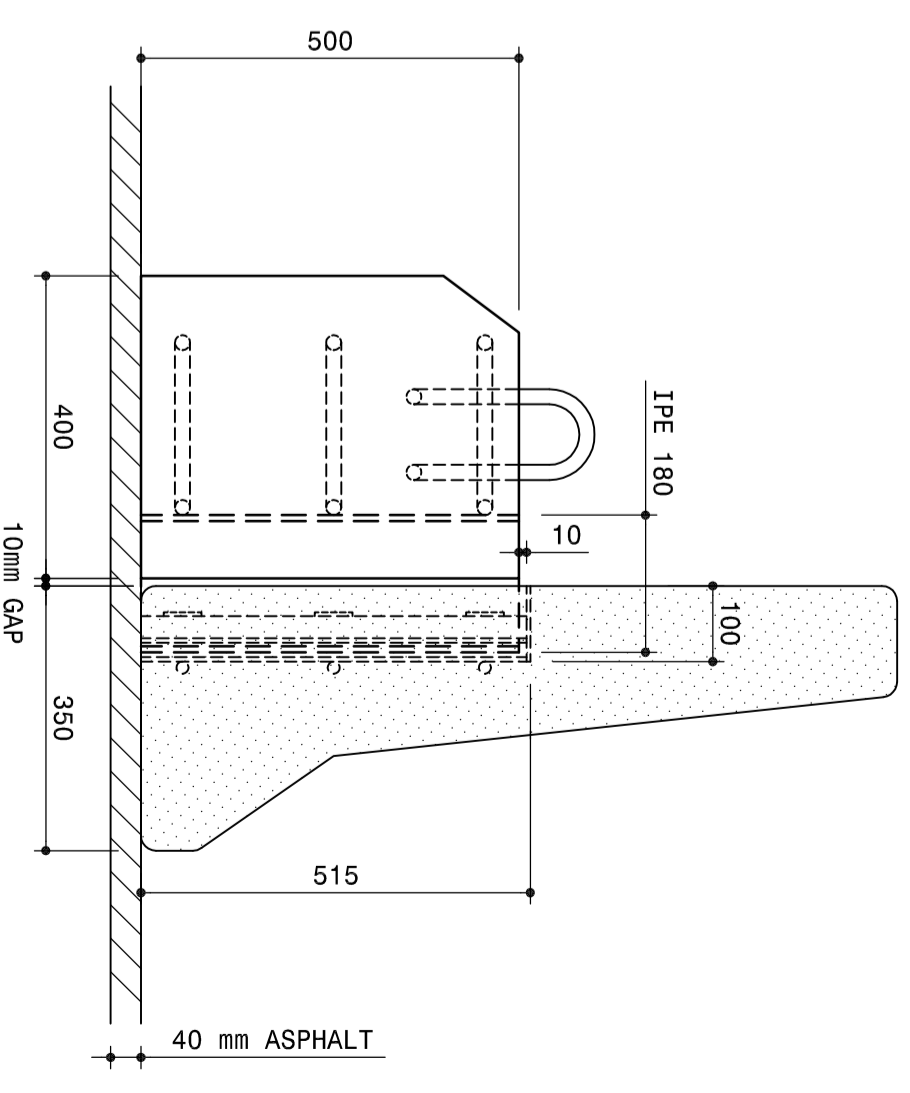
Ronnie Koen  
Civil Concepts (Pty) Ltd

3 December 2012



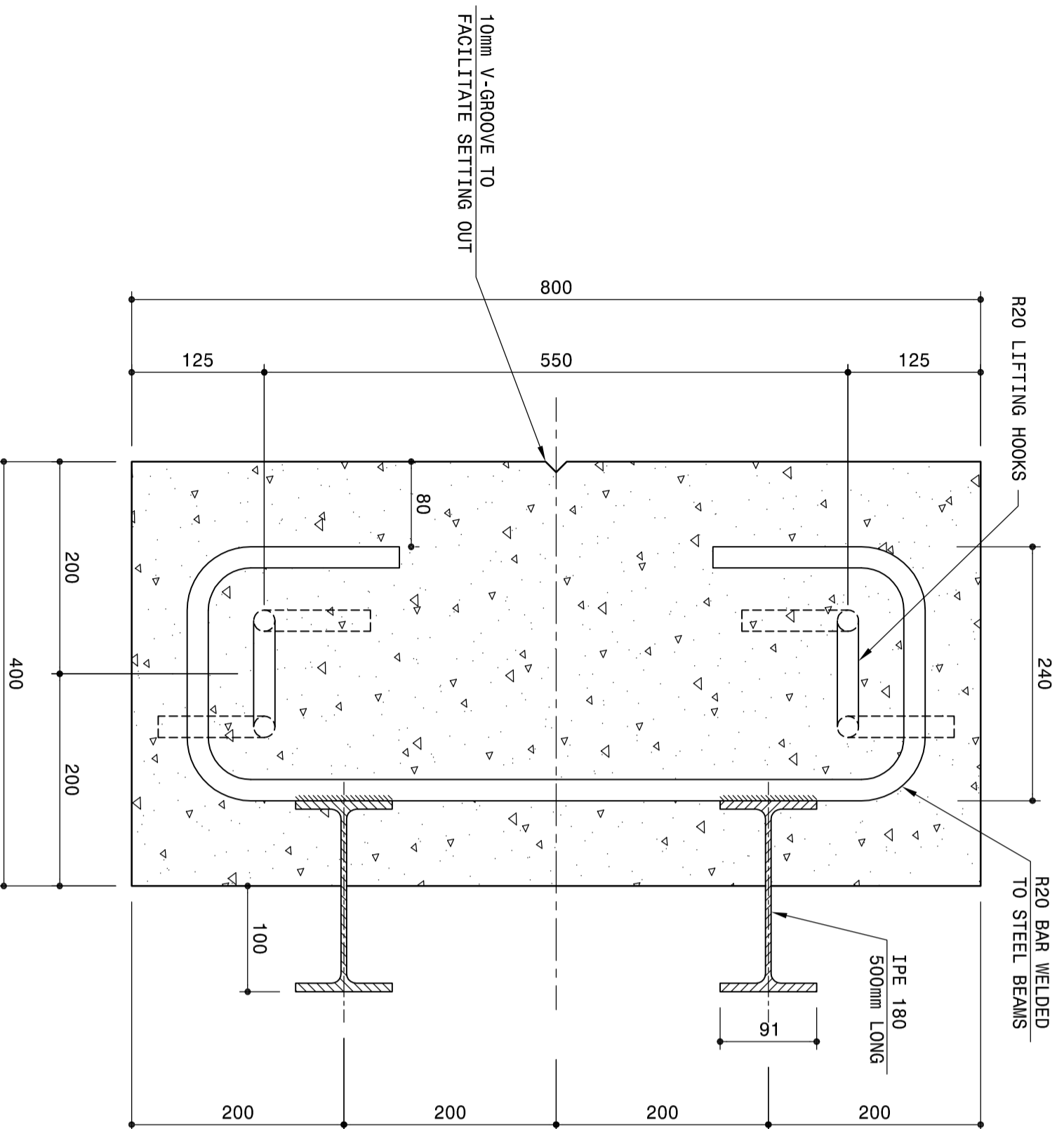
**PART SECTIONAL PLAN OF TEMPORARY PRECAST BARRIER  
(FIXING BLOCK ARRANGEMENT)**

SCALE 1:20



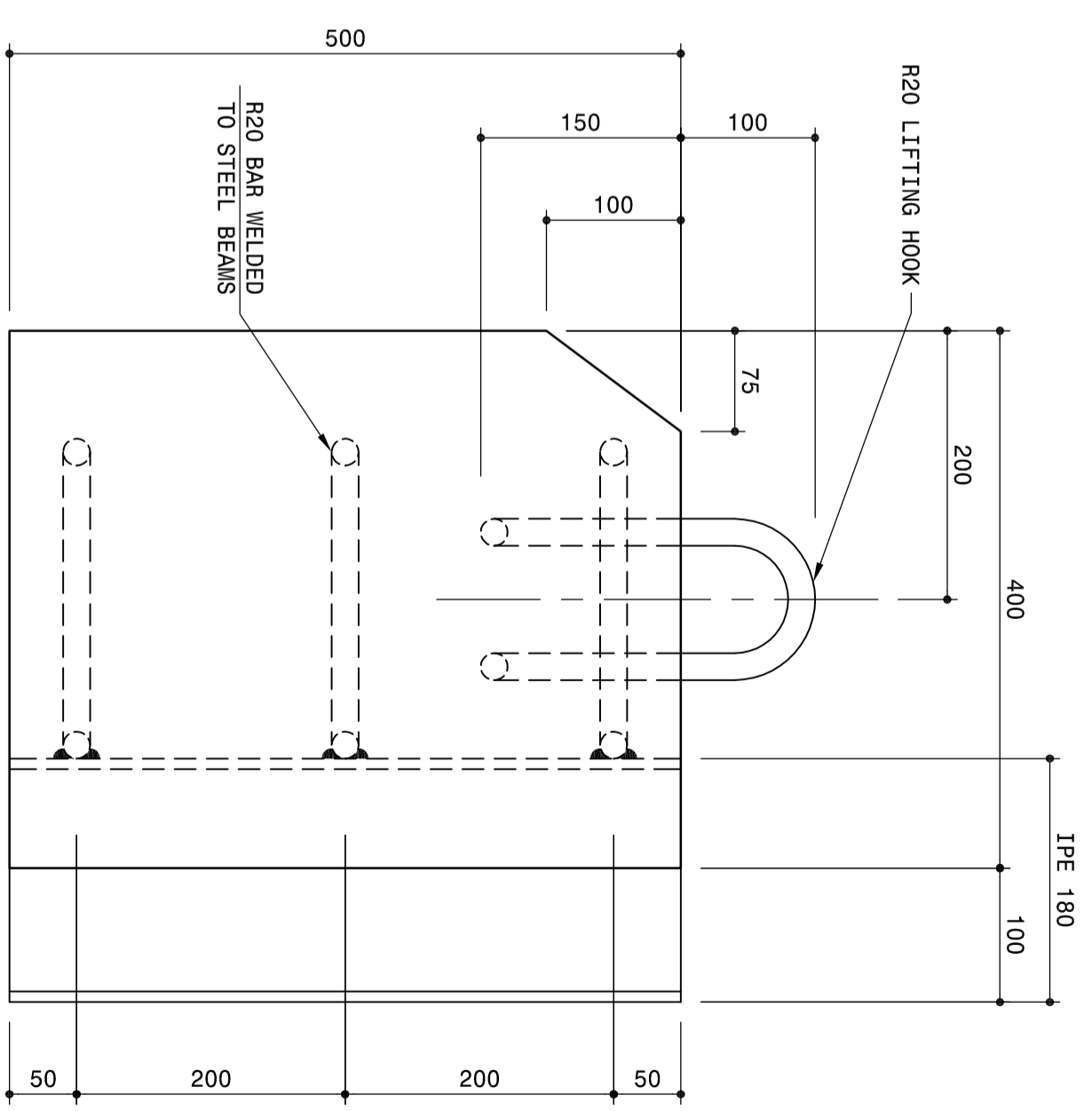
**SECTIONAL ELEVATION  
(FIXING BLOCK ARRANGEMENT)**

SCALE 1:10



**SECTIONAL PLAN OF FIXING BLOCK**

SCALE 1:5



**ELEVATION OF FIXING BLOCK**

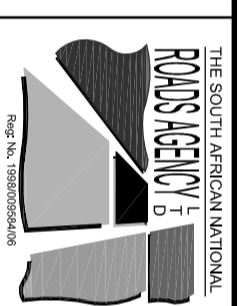
SCALE 1:5

No.	DATE	REVISION	APPROVED
VI	2007/1/28	ORIGINAL VERSION	
V	2007/1/28	HANDLING OF REVISIONS ALTERED	

**SANRAL TYPICAL DRAWINGS**

COPYRIGHT: THIS DRAWING IS PROTECTED IN TERMS OF THE COPYRIGHT ACT No. 98 OF 1978 AND MAY NOT BE REPRODUCED WITHOUT PERMISSION IN WRITING FROM SANRAL.

CONDITIONS FOR USE: CONSULTANTS APPOINTED BY SANRAL SHALL INCORPORATE THE TYPICAL DETAILS HEREON INTO THEIR SPECIFIC DESIGN FOR WHICH THEY WILL ASSUME FULL PROFESSIONAL RESPONSIBILITY. THIS TYPICAL DRAWING MAY NOT BE USED FOR TENDER PURPOSES.



**HEAD OFFICE**

Diseaia Place  
122nd Park Street  
Hatfield, Pretoria  
PO Box 415  
Pretoria 0001  
South Africa  
Tel: (012) 428 6000

DATE: 05/11/2007

APPROVED

**TYPICAL DRAWINGS - STRUCTURES**

F - SHAPE TEMPORARY MEDIAN BARRIERS  
1000mm HIGH - SINGLE SIDED PRECAST  
TEMPORARY USE - STABILIZATION DETAILS 1 OF 2

SANRAL DOC. No. (GPI)  
171429-V2

SANRAL DOC. No. (DWG)  
171430-V2

SANRAL DRAWING No.  
TD-S-MB-5006-V2

TD-S-MB-5006-V2

