

I have two FT-736r rigs for sale, they are both identical.

Each has the 144mhz, 220mhz, 430mhz, and 1.2ghz modules and the 600hz CW filter (XF-455MC).

I do not have any test equipment and I do not have a dummy load or antenna for 1.2ghz, so the 1.2ghz modules on each I assume to work, but have no guarantees. The AC power supply works for both. I only tested AC power supply to see if radio will turn on. All my tests and contacts I made were with a DC power supply.

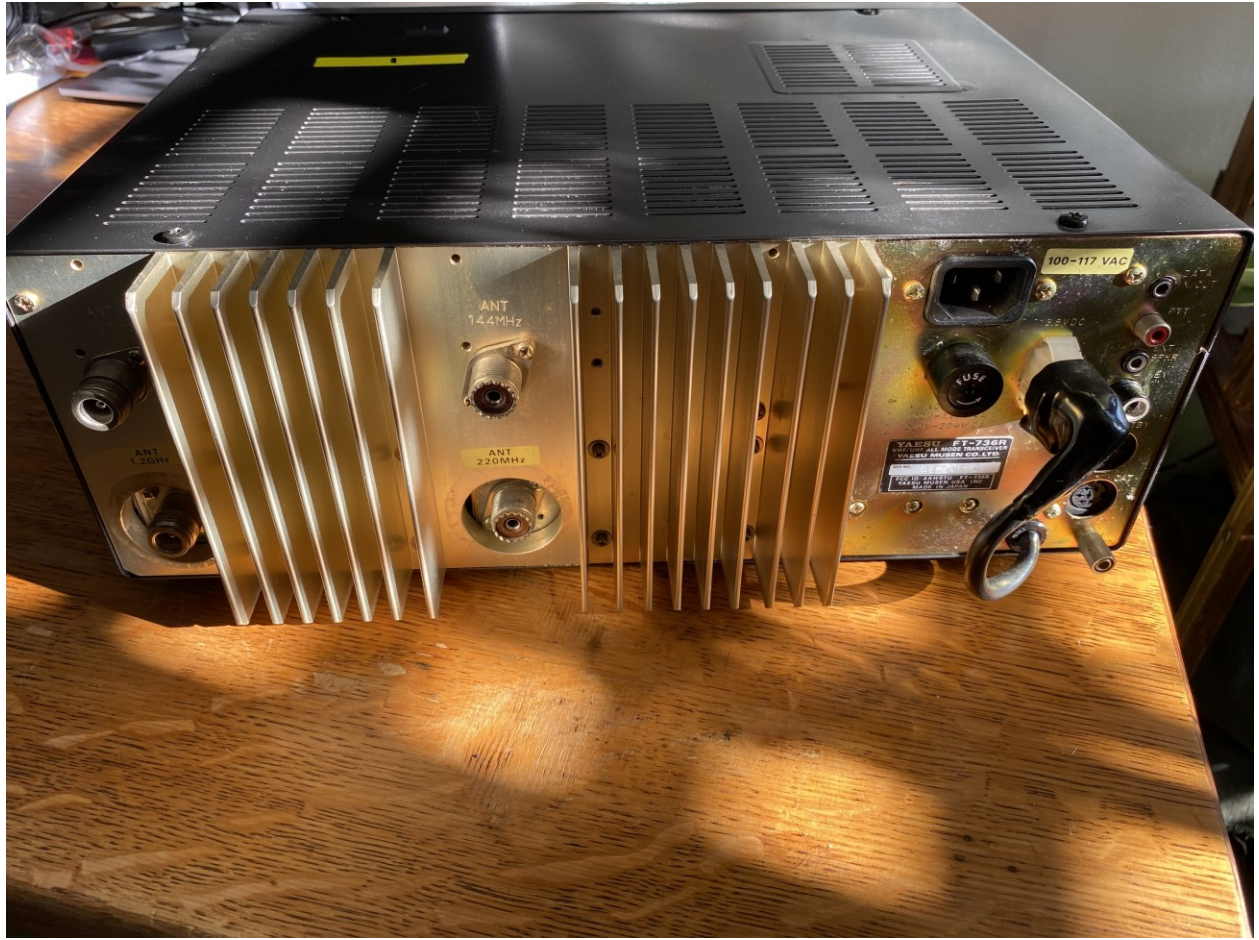
Both rigs show max output on 144mhz, 220mhz and 430mhz when testing with FM and CW. The PO meter goes to 8.

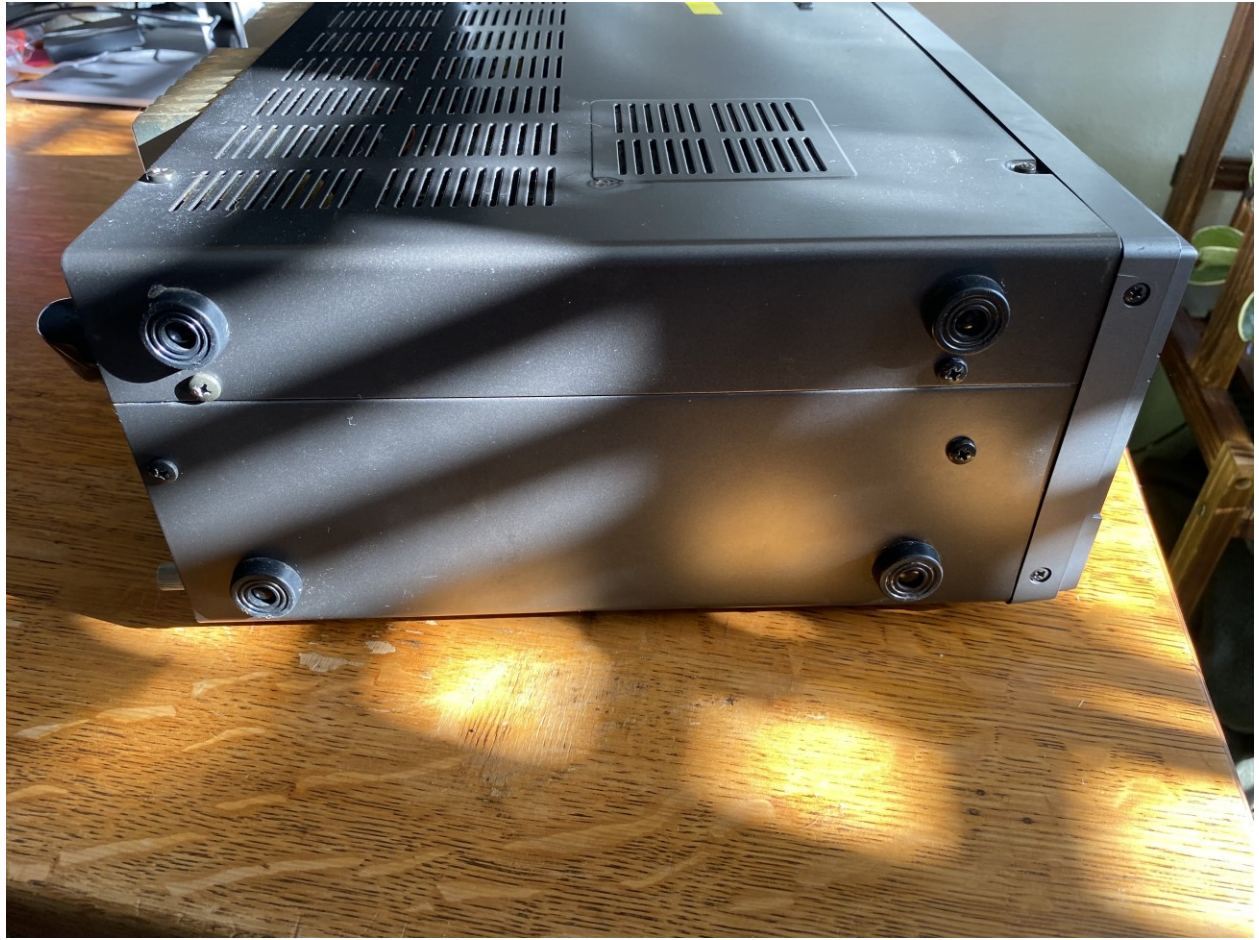
Rig 1: \$500 or best offer.

FM, and CW work, however no output goes out when the radio is in SSB, receives fine.











Rig 2: \$750 or best offer.

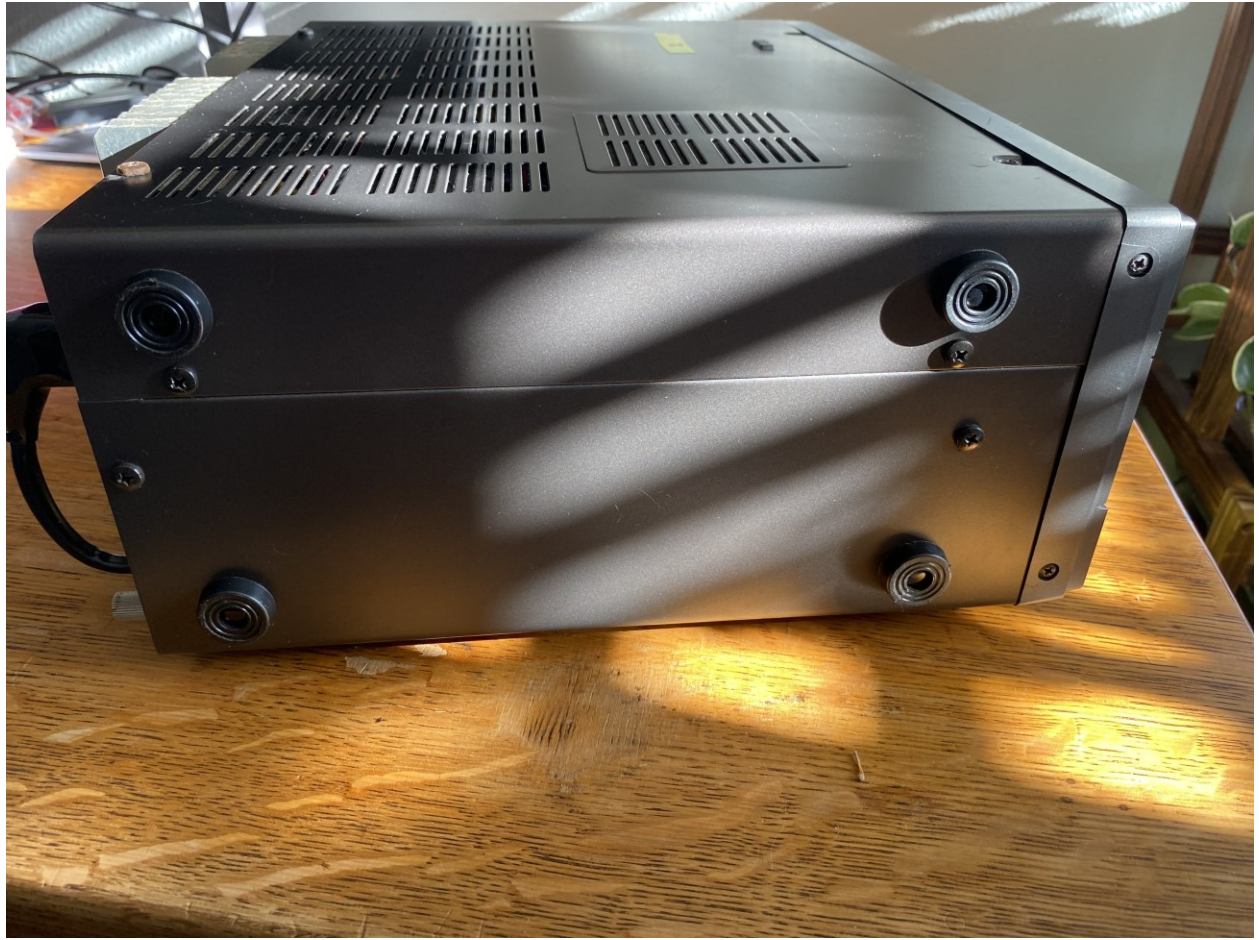
FM, CW, and SSB works. The only quirk I noticed was testing SSB on 220mhz, when the meter dial is set to DISC/ALC the meter doesn't move on the radio, but I see power out on an external SWR meter meant for CB radios (only SWR meter I have). When I switch the meter dial to S/PO, the meter moves like it would behave if set to DISC/ALC.

I repaired the AC power supply by using the documentation found [here](#). I did not add the fan. I replaced C8, C9, C12, C25, C21, C22, C23, C26, and upgraded R17 and R18 with the 5w rated resistors.









I assure you the screen works 100%, it was hard to take a pic with my phone as the display flickers looking at it in the camera.



Rig 2 gets the mic on the left.

