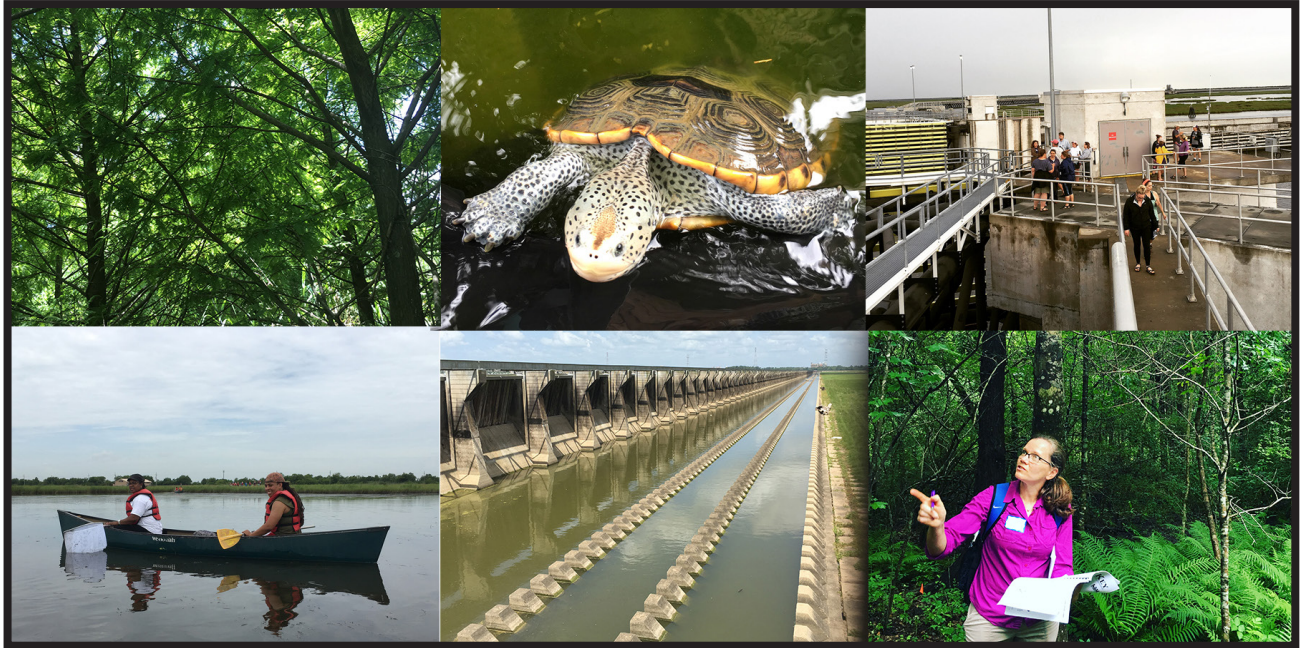


# MISSISSIPPI RIVER DELTA INSTITUTE

2017 RIVERS INSTITUTE EDUCATORS' WORKSHOP  
"HEADWATERS TO THE DELTA"

June 20 - 22, 2017 • ST. BERNARD PARISH, PONTCHARTRAIN BASIN, LOUISIANA



**THE MISSISSIPPI RIVER FLOWS THROUGH NEW ORLEANS AND IS THE VERY REASON FOR THE CITY'S EXISTENCE, BUT HOW MUCH DO WE REALLY KNOW ABOUT IT & HOW CAN YOU INCORPORATE RIVER AND DELTA CONCEPTS INTO YOUR CURRICULUM?**

In June of 2017, the 3rd annual WATERS TO THE SEA® MISSISSIPPI RIVER DELTA INSTITUTE (MRDI) will take place in St. Bernard Parish when HAMLINE UNIVERSITY'S CENTER FOR GLOBAL ENVIRONMENTAL EDUCATION (CGEE) and local educators present a three day, field-based professional development opportunity to inspire, educate and prepare 3rd-8th grade teachers to engage students in STEM disciplines through experiential, inquiry-based investigations at local watersheds.

This workshop is a component of a national initiative to develop a community of water educators. The Rivers Institutes are highly acclaimed professional development workshops developed by CGEE in St. Paul Minnesota.

For more information on the Rivers Institutes and CGEE please visit:

[www.hamline.edu/cgee/riversinstitute](http://www.hamline.edu/cgee/riversinstitute).

APPLY FOR THE MISSISSIPPI RIVER DELTA INSTITUTE AT:

[www.hamline.edu/education/cgee/delta/](http://www.hamline.edu/education/cgee/delta/)



## MISSISSIPPI RIVER DELTA INSTITUTE GOALS:

TO INCREASE TEACHERS' KNOWLEDGE OF MISSISSIPPI RIVER RELATED CONTENT, ENHANCE STEM FOCUSED INVESTIGATION SKILLS, EXPAND LITERACY SKILLS, AND HELP GUIDE THE DEVELOPMENT OF MEANINGFUL, ENGAGING CLASSROOM INVESTIGATIONS FOR STUDENTS.

**ELIGIBILITY:** All elementary and middle school classroom teachers, as well as teams of teachers are welcome to apply. Our focus will be upon 3rd-8th grade STEM standards and activities. Other educators will also be considered.

### ACTIVITIES INCLUDE:



- Exploring the Mississippi River and estuaries by boat, offering unique vantage points of water;
- Articulating field investigations through accurate, **scientific observation**;
- Creating, utilizing and learning new strategies using **science notebooks**;
- Participating in learning activities utilizing **WATERS TO THE SEA**®, multimedia learning tools, as well as other classroom resources & tools;
- **Inquiry-based investigations** of riverine and marsh habitats, delta geology, coastal engineering, and urban water management.
- Strategy sharing for helping students 'think like a scientist,' 'design like an engineer,' and 'write like an author.'
- Creating plans to implement science, inquiry, and literacy investigations into their classrooms.



### EACH RIVERS INSTITUTE PARTICIPANT WILL RECEIVE:



- Three full days of experiential instruction with lunch provided;
- "Bonus" day (June 23) offered for further exploration of field locations;
- Continuing Education Credits;
- The **WATERS TO THE SEA**® multimedia tool and additional classroom resources.

**FUNDING FOR THE 2017 MRDI IS PROVIDED, IN PART, THROUGH THE GENEROUS FINANCIAL ASSISTANCE OF THE MERAUX FOUNDATION. WITH THEIR ONGOING SUPPORT WE ENABLE HUNDREDS OF TEACHERS TO IMPROVE THE WAY THEY UNDERSTAND AND TEACH SCIENCE, AND HELP THOUSANDS OF STUDENTS CONNECT WITH THE NATURAL WORLD.**

\*\* A refundable deposit of \$25 is required to complete the registration process. It will be refunded after workshop completion. If this is an obstacle, please contact us.

### FOR MORE INFORMATION CONTACT:

Dinah Maygarden  
dmaygard@uno.edu  
504-669-1893

Jennifer Roberts  
jroberts@swbno.org

New interactive multimedia learning materials about the Delta's natural and cultural history are being made available through the Headwaters to the Delta Initiative.

RIVERS INSTITUTE PARTICIPANTS WILL RECEIVE AND EXPLORE A SUITE OF MULTI-MEDIA LEARNING MODULES DESIGNED TO HELP STUDENTS IN GRADES 4-8 UNDERSTAND CRITICAL WATER ISSUES THROUGH ENGAGING STORIES AND VISUALIZATIONS.

WATERS TO THE SEA [WWW.HAMLIN.EDU/EDUCATION/CGEE/WATERS-TO-SEA](http://WWW.HAMLIN.EDU/EDUCATION/CGEE/WATERS-TO-SEA)