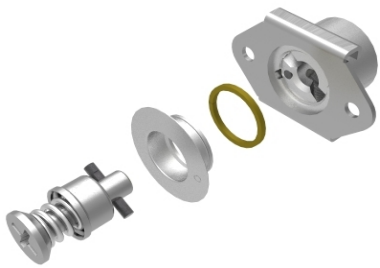


Skybolt CLoc® 4000 Series Common Sets

Forget Charts - The followings assemblies solve 99% of all applications



SK40S5S



ZG4002

Stainless Series

SK40S5S-SET1	Total Grip Range
SK40S5-2S Phillips Head	.010 - .310
SK-OS Panel Grommet (.094 max thickness)	
SK-R4G Stud/Grommet Retainer	
SK245-4 Adjustable Receptacle 1/8" Rivets	

Skytanium® Series

ZG4002-SET1	Total Grip Range
ZG4002-2 Collared Slot	.010 - .310
ZG-094LA Panel Grommet (.094 max thickness)	
SK-R4G Stud/Grommet Retainer	
SK245-4 Adjustable Receptacle 1/8" Rivets	

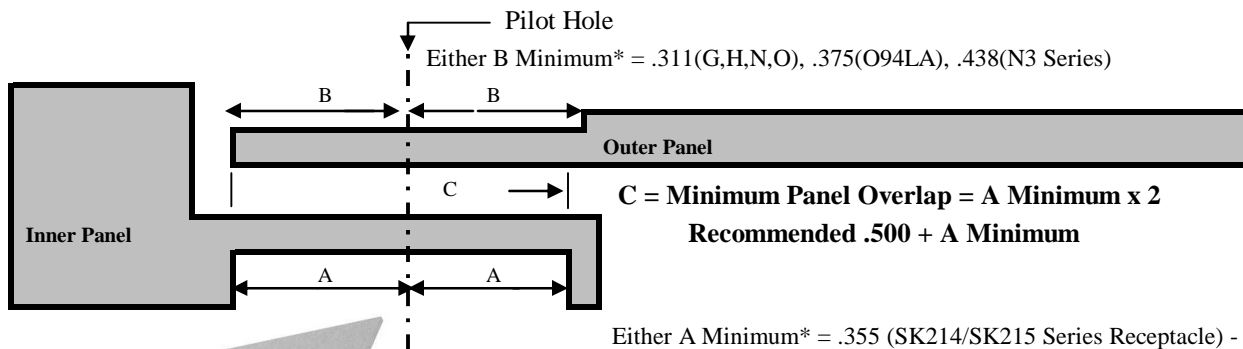
Note (1)

Note (2)

Note 1 - OS Grommet Restrictions - Max Outer Panel Thickness = .094

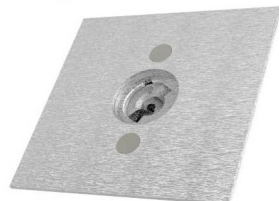
Note 2 - See Dimension 'B' and 'C' below for minimum panel clearance and Overlap for SK245-4 Receptacle

What does Overlap Mean? Work from the Inner Panel Out (Choose receptacle then grommet), then determine location of pilot hole.



Either A Minimum* = .355 (SK214/SK215 Series Receptacle) - or -
.434 (SK244/SK245 Series Receptacle)

*Minimums reflect part dimensions in a perfect world installation.



Installation Tools

4P3-T26 Tools	Tools to install studs through grommets and install grommet retainers
Template-215	Template to drill rivet holes with #30 Drill
Template-245	Template to expand center hole with Unibit-3 Stepdrill