

**Project Information**

<b>Project Name:</b>	RSIC Stage 2 von Haast Building	<b>Date:</b>	27 August 2017
<b>Project Number:</b>	DC-1871	<b>Client:</b>	University of Canterbury
<b>Site Address:</b>	Forestry Rd	<b>Supervisor:</b>	Keegan Hewlett/ Gary Butterfield

**Summary of works**
**L3 North Enclosure 3&4**

All 80 % completed awaiting service disconnection to sandblast the risers and heater voids

**Contaminated ceiling and wall Risers** Rooms 312, 312a, 313,315, 316, 317, 319, 320, 323, 325, 326,329, 330, 331, 335, 337, 339 (70 % completed)

**Floor tiles** Rooms 315, 317, 319, 329, 335, 339, 330, 326, 322, 312, 312A (All completed)

**Heaters** throughout have been completed

Precise Consulting have been carrying out air monitoring outside the DCU and NPU with results showing no elevated fibre counts

**L3 South Enclosure 1, 2, 3, 4**

All 80 % completed awaiting service disconnection to sandblast the risers and heater voids

**L2 North Enclosure 1, 2, 3, 4**

Soft strip completed and all windows and open risers sealed off with 250 micron PVC

**L2 South Enclosure 5, 6, 7, 8**

Soft strip completed and all windows and open risers sealed off with 250 micron PVC

**L1 North Enclosure 1, 2, 3, 4**

This area has been used for the storage of a large quantity of furniture type waste and will be loaded out via the loading Dock on the East side

**L1 South Enclosure 5, 6, 7, 8**

Soft strip completed and all windows and open risers sealed off with 250 micron PVC

**BASEMENT**

All internal structures and materials have been demolished or broken down into a manageable size for wrapping . The majority of the week was spent wrapping contaminated waste parcels in 250 micron PVC.

All demolition waste has now been wrapped and stored.

As power will be isolated next week we can then remove plumbing and wiring off the walls and ceiling

**PLANT ROOM L1 119**

At this stage the clean involving a Hepa Vacuum, wet wiping and a final tac-rag wipe of all surfaces including pipe work has been completed. The assumed pipe Gaskets will be removed as part of the de-construction but we have sealed the gaskets.

When removing, we will simply be cutting either side of the pipe join so we do not disturb the gasket joins.

Precise will be on site Monday to undertake a visual inspection followed by Airborne fibre monitoring test.

**Site Notes**

*Incidents & accidents, variations, damage, material requests, delays, visitors to site etc.*

\*Precise Consulting on site daily to install outside air monitoring of the NPU and DCU

\*We will need to get The Gas Guys engaged to work with us to do the physical gas pipe cut since they can't guarantee pipes to be free of LPG

\*Meeting was held with Tony (UoC Electrical) and Brendan of C&L to determine how to safely provide site temp power for Level 1,2 and 3 and when to cut permanent power to von Haast feed from the SBS Basement

\*Precise conducted further swab testing in L1 &2 in the wall Risers and adjoining ceiling spacers. It was also decided to do further testing of the white painted ceiling panels which has had Whisper coat removed in the past. Concern about, how and when this was removed to understand how clean the concrete is. Historically it was acceptable to bond after removal has taken place, however now as a Demolition, we need to know from a waste and potential environmental point of view.

**Site Staff**

<b>Staff Name:</b>	<b>Work Area &amp; Works Carried Out:</b>
Keegan Hewlett (COC)	Level 3 North and Plantroom 119
Bernard Ryan	Plantroom 119, Set up
Karl Petersen	Loading of waste (Digger)
Shannon Ngaronga	Level 3 North Sandblasting prep
William Thomas	Level 3 North Sandblasting prep
Helena Reynolds	Plantroom 119, Set up
Vince Balatero	Plantroom 119, Set up
Bradley Nel	Level 3 North Sandblasting prep
Cameron Parnell	Level 3 North Sandblasting prep
Nikola Karanas	Level 2 strip out
Semisi Niupalau	Level 2 strip out
Tautahi (Tee) Kiveka	Level 1 strip out
Jacob Edmonds	Carrying waste to loading dock
Tim Verplanke	Level 1 strip out
Juan Labarerra	Carrying waste to loading dock
Jordan Preece	Level 2 strip out
Dayne Robinson	Carrying waste to loading dock
Rachel Fitzpatrick	Plantroom 119

Gary Butterfield (COC)	Level 2
	Level 2

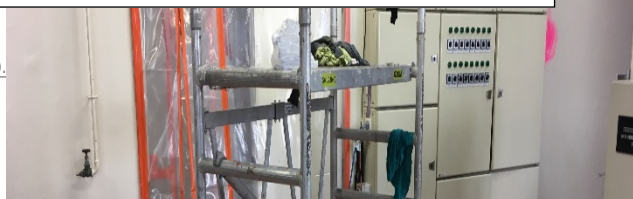
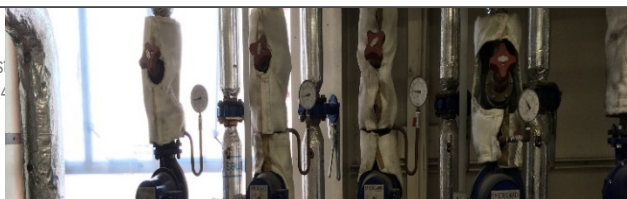
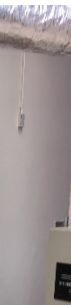
Wayne Riley	Level 2
Richie Edwards (COC)	Basement
	Basement
	Basement
Quentin Murphy	Basement
Logan McMurtrie	Basement
Storm Campbell	Basement
Jake Murphy	Basement



Level 1 and 2 strip out, before setting up enclosures, sealed areas with ACD contamination

Photos:

Pl  
ntr  
oo  
m  
11  
9  
NP  
U  
set  
up



Level 3 North during the asbestos removal, bagging of ceiling tiles and protection of clean ceiling areas



Stri  
PO

