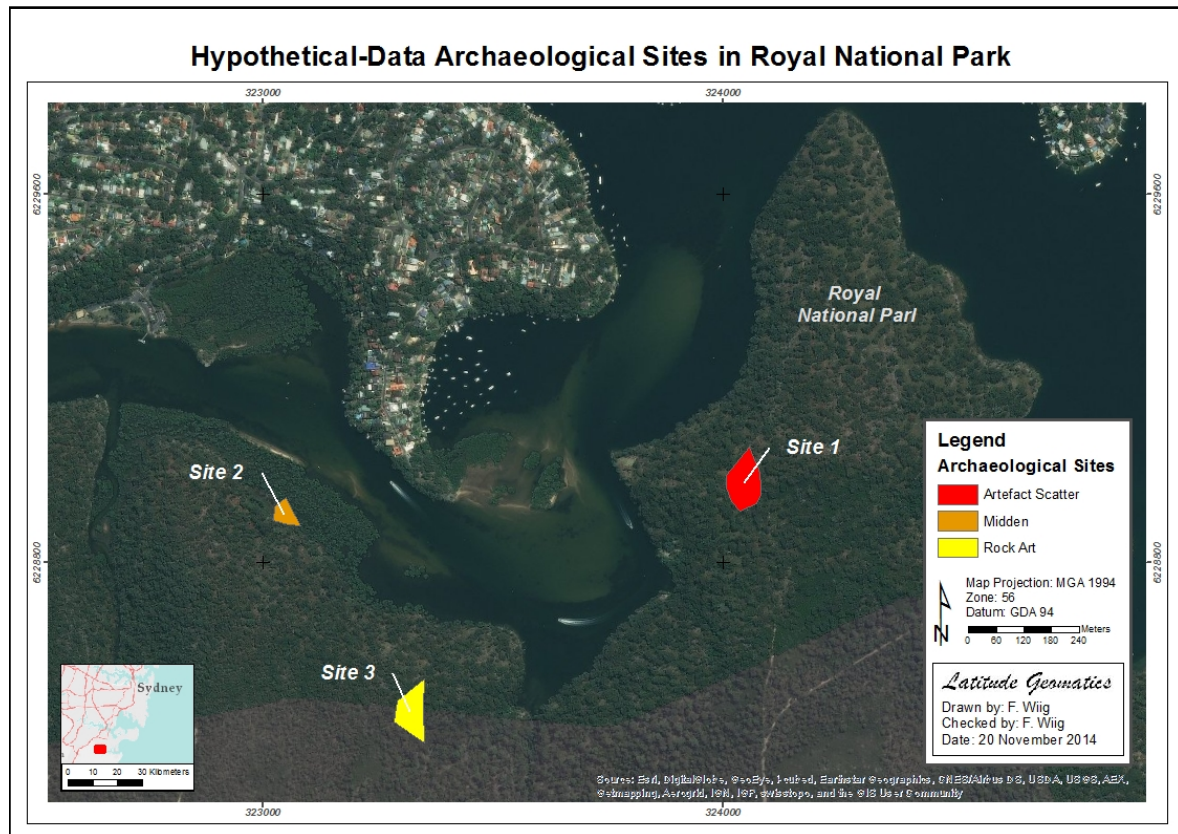


GIS for Archaeologists

An Introduction to ArcGIS and Mapping



Learn to make maps in ArcGIS

As a professional archaeologist or student, do you need to learn how to create cartographically correct map products? Would you like to learn the basics in a short workshop?

This intensive, hands-on course will introduce you to mapping conventions, the basics of ArcGIS, data management and making archaeological maps. In addition, you will leave with a comprehensive reference manual.

Course outline:

- ▶ GIS basics
- ▶ Datums and projections
- ▶ Data acquisition and file management
- ▶ Main toolbar in ArcGIS
- ▶ How to add and manage layers
- ▶ Mapping conventions
- ▶ Georeferencing
- ▶ Making your map

Every student is required to bring their own laptop with an installed version of ArcGIS. You can download a free 2 month trial of ArcGIS for Desktop 10.2.2 or 10.3 at the following link: <http://www.esri.com/software/arcgis/arcgis-for-desktop/free-trial>

You need to create an ESRI account and sign in to get the download.

Each course is a 3 hour evening session.

When: Thursday, March 26, 6pm - 9pm OR
Monday, March 30, 6pm - 9pm OR
Tuesday, March 31, 6pm - 9pm

Where: Big Dig Archaeology Education Centre, 110 Cumberland St., Sydney, NSW

Cost: \$275 and \$225 for students

Please contact Frances Wiig at:

latitudegeomatics@gmail.com