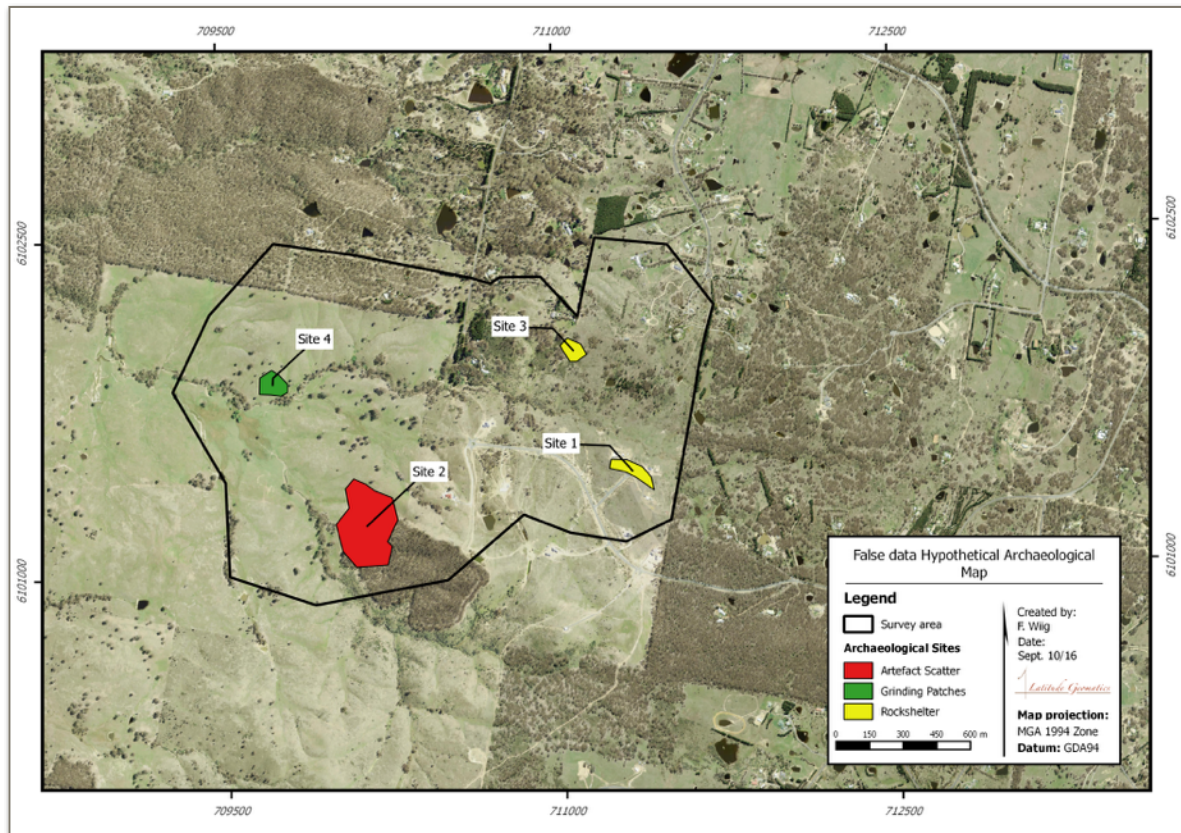


QGIS for Archaeologists

An Introduction to QGIS and Mapping



Learn to make maps in QGIS

As a professional archaeologist or student, do you need to learn how to create cartographically correct map products? Would you like to learn the basics in a short workshop using FREE mapping software?

This intensive, hands-on course will introduce you to mapping conventions, the basics of QGIS, data management and making archaeological maps. In addition, you will leave with a comprehensive reference manual.

Course outline:

- ▶ GIS basics
- ▶ Datums and projections
- ▶ Data acquisition and file management
- ▶ Main toolbar in QGIS
- ▶ How to add and manage layers
- ▶ Mapping conventions
- ▶ Georeferencing
- ▶ Making your map

Every student is required to bring their own laptop with an installed version of QGIS. This is a free open source software that can be downloaded at the following link:

<http://www.qgis.org/en/site/forusers/download.html>

Each course is a 3 hour evening session.

When: Tuesday, Oct 4, 6pm - 9pm

Where: Big Dig Archaeology Education Centre, 110 Cumberland St., Sydney, NSW

Cost: \$275 and \$225 for students

Please contact Frances Wiig at:

frances@latitudegeomatics.com