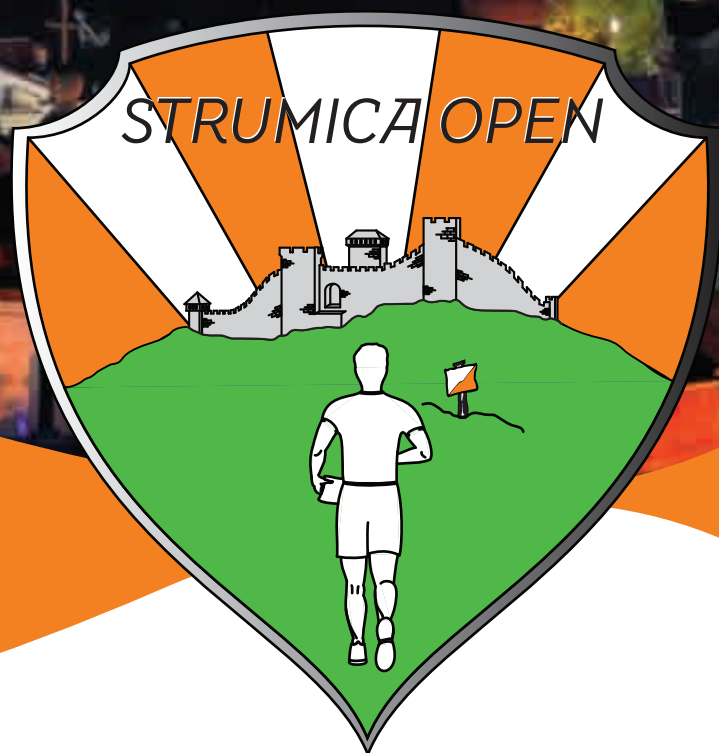


**BULLETIN No. 2**

# **STRUMICA OPEN 2013**



**MACEDONIA - STRUMICA  
17-20<sup>th</sup> October 2013  
3 DAYS, 4 RACES**

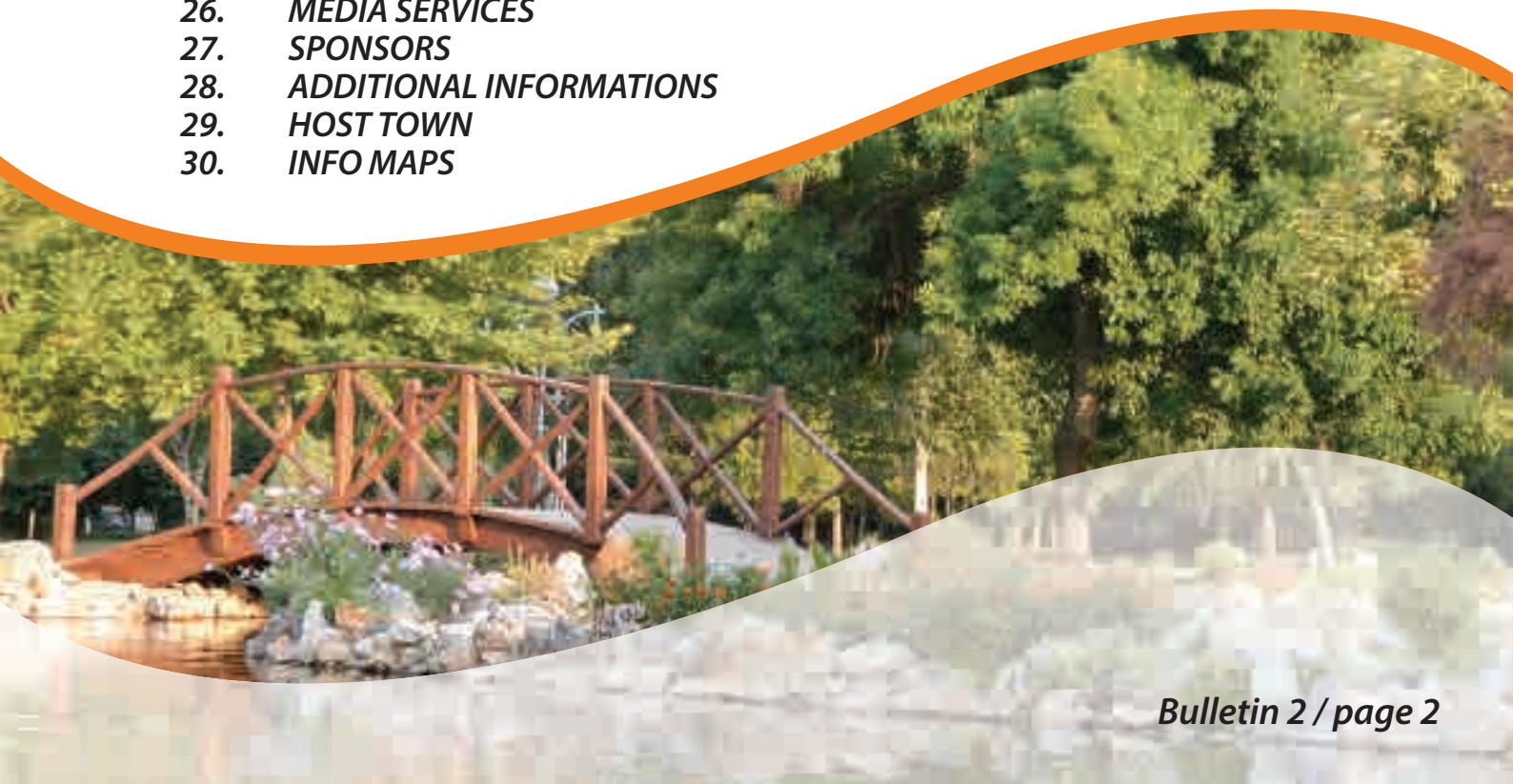
[www.strumicaopen.mk](http://www.strumicaopen.mk)

[info@strumicaopen.mk](mailto:info@strumicaopen.mk)

# CONTENTS :



1. **WELCOME TO STRUMICA OPEN 2013**
2. **ORGANIZERS**
3. **EVENT CENTRE**
4. **COMPETITION OFFICIALS**
5. **ACCREDITATION, EVENT AND MEDIA CENTRE WITH ACCESS INFORMATION**
6. **PROGRAM**
7. **TEAM OFFICIAL'S MEETINGS**
8. **DEADLINE AND FINAL ENTRIES AND FEES**
9. **PAYMENTS**
10. **COMPETITION RULES**
11. **START NUMBERS**
12. **CHECK-IN AND QUARANTINE ZONES**
13. **COACHING AND TEAM ZONES**
14. **CLASSES**
15. **CLOTHING**
16. **PUNCHING AND TIMING SYSTEM**
17. **TRAINING OPPORTUNITIES**
18. **EMBARGOED AREAS**
19. **MAPS DETAILS**
20. **TERRAIN DESCRIPTION**
21. **ACCOMMODATION AND FOOD SERVICES**
22. **BANQUET**
23. **TRANSPORT AND PARKING**
24. **LOCAL WEATHER AND CLIMATE**
25. **VISA REQUIREMENTS**
26. **MEDIA SERVICES**
27. **SPONSORS**
28. **ADDITIONAL INFORMATIONS**
29. **HOST TOWN**
30. **INFO MAPS**



# 1. Welcome to STRUMICA OPEN 2013



*Dear orienteering friends, dear guests and officials,*

*Macedonia in 2011 was the host of the SEEOC 2011 so we have one good background in organizing one big and important event. Also Macedonia will be the organizer of EYOC 2014, once again we have new challenge and chance to show You that we can offer great time orienteering here in our terrains.*

*So, after SEEOC 2011 and before EYOC 2014 we are inviting You to our next Event- Strumica Open 2013, in our town Strumica . We have proved once that we are great hosts, organizes and that we can offer great opportunities for orienteering in our terrains and we will prove it once again but now in other city and other different region.*

*It will be our great pleasure if You take part of this Event and meet our country with our beautiful terrains for orienteering.*

*Strumica is a modern city , sports city , with a lot of young people and in the last 10 years it is the host of a lot of regional and European championships and events.*

*The event will start at 17-th October and will last till 20-th October. During this 3 days there will be 4 races : Sprint , Night short, Long and Middle WRE race.*

*Come and be part of this Event and show Your best Orienteering qualities !!!  
See You soon in Strumica,*

*Riste Kirov  
Event Director,*





<b>CHAIRMAN</b>	- Mr. Zoran Zaev – Mayor of Strumica
<b>EVENT DIRECTOR</b>	- Mr. Riste Kirov ++38971239798
<b>SECRETARY &amp; FINANCE</b>	- Mrs. Slobodanka Kostova ++38975387607
<b>TEHNICAL DIRECTOR</b>	- Mr. Toni Kostov ++38970387650
<b>IOF EVENT ADVISER</b>	- Mr. Zoran Milovanovic
<b>NATIONAL CONTROLLER</b>	- Mr. Gorgi Kostov ++38978201110
<b>ACCOMMODATION</b>	- Mr. Trajce Iliev ++38978281249
<b>MEDIA &amp; MARKETING</b>	- Mr. Dusko Trajanovski ++38975481249
<b>IT DIRECTOR</b>	- Mr. Vane Belcovski
<b>COMPETITION MAPS: Fieldwork and drawing: Georgi Hadzimitsev (Bul), Dian Bonev (Bul) and Georgi Kartalov (Bul)</b>	



### 3.EVENT CENTRE



*The official Event and Media Centre of championships will be in the Official Army House located in the Centre of the city.*

*The Event Centre has its own conference hall, internet connection and all Press conferences and Team leaders meetings will be held there.*

#### Opening hours of the Event Centre:

Date	Event	Hour
17.X.2013	Opening Event Centre	08:00
	First team leaders meeting	20:00
	Closing Event Centre	23:00
18.X.2013	Opening Event Centre	08:00
	Second team leaders meeting	17:00
	Closing Event Centre	23:00
19.X.2013	Opening Event Centre	08:00
	Third team leaders meeting	18:00
	Closing Event Centre	23:00
20.IX.2011	Opening Event Centre	08:00
	Closing Event Centre	17:00

#### EVENT CENTRE ADDRESS:

Official Army House

St. Blagoj Jankov Muceto bb. GPS : 41.442312,22.637079

2400 Strumica

Republic of Macedonia.



## **Mapping and course setting**

*Mapping Team :*  
*Georgi Hadzimatev, Geordi Kartalov and Dian Bonev*

*Course Setters:*  
*Sprint, Night short, long and Middle WRE : Georgi Hadzimatev , Dian Bonev and Toni Kostov*

## **Event Controllers and Jury**

*Event Controller : Gorgi Kostov (MKD)*  
*IOF Event Adviser : Zoran Milovanovic (SRB)*

*Jury : Vujadin Zagar (SRB) , János Sümegi (HUN), Száva Zsigmond (HUN)*

## **ACCREDITATION, EVENT AND MEDIA**

*The Accreditation and Event Centre is located in the Official Army House which is located in the centre of the city, in the central park. In the same place will be and team leaders meetings.*  
**IMPORTANT:** *For accreditation, Team leaders must show the passports of all team members to prove their nationality and citizenship of the country of their Federation.*  
*Also, teams will be asked to supply the phone numbers of team contact persons so that the organizers can contact team officials if necessary.*

## **ACCESS (LOCATION)**

*Strumica is 170km South-East from Skopje. The fastest way to go to Strumica is drive on Highway E75 to the exclusion of Valandovo (City) than go to through the local road Valandovo-Strumica.*

*Other way to get in Strumica is to drive following route :*  
*Skopje- Veles - Stip - Radovis -Strumica*





DATA	TIME	EVENTS	PLACE
17.X.2013	08:00	Opening the Event Centre	Event Centre
	09:00	Arrival and competitors accreditation	Event Centre
	12:00	Training and Model Races for all competitors	Strumica/Suvi Laki
	12:00	Deadline for Entry/Accreditation	Event Centre
	19:00	Dinner	In the Restaurant
	20:00		
	20:00	First Team Leaders Meeting	Event Centre
	23:00	Closing Event Centre	Event Centre
18.X.2013	06:30	Breakfast	In the Restaurant
	09:00		
	08:00	Opening the Event Centre	Event Centre
	10:30	Closing the Quarantine Zone for the Sprint Distnace	Strumica-Primary School
	11:00	Sprint Start	Strumica-Primary School
	14:00	Closing the Finish	Centre of Strumica
	14:00	Lunch	In the Restaurant
	16:00		
	17:00	Second Team Leaders Meeting	Event Centre
	19:00	Dinner	In the Restaurant
	20:00		
	20:00	Official Opening Ceremony STRUMICA OPEN 2013	Centre of Strumica
	20:15	Closing the Quarantine Zone for the Night Short Distnace	Strumica
20:30	Night Short Start	Strumica	
22:30	Prize Giving Ceremony – Night Short Start Distance	Centre of Strumica	
23:00	Closing Event Centre	Event Centre	
19.X.2013	06:30	Brekfast	In the Restaurant
	08:30		
	08:00	Opening the Event Centre	Event Centre
	08:00	Departure to the Start Area	Event Centre
	10:00	First Start Long Distance	25km from Strumica - Suvi Laki
	14:00	Closing the Finish	25km from Strumica - Suvi Laki
	14:00	Lunch	In the Restaurant
	16:00		
	18:00	Third Team Leaders Meeting	Event Centre
	20:00	Banquet	In the Restaurant
23:00	Closing Event Centre	Event Centre	
20.X.2013	06:30	Breakfast	In the Restaurant
	08:30		
	08:00	Opening the Event Centre	Event Centre
	08:00	Departure to the Start Area	Event Centre
	10:00	Start Middle Distance WRE race	25km from Strumica - Suvi Laki
	14:00	Closing the Finish	25km from Strumica - Suvi Laki
	14:30	Prize Giving Ceremony – Middle Distance and WRE	Event Centre
	15:00	Ceremonial Closing of SRUMICA OPEN 2013	25km from Strumica - Suvi Laki
	15:30	Departure	25km from Strumica - Suvi Laki
	17:00	Closing Event Centre	Event Centre

## 7. TEAM OFFICIAL'S MEETINGS

## 8. DEADLINE AND FINAL ENTRIES AND FEES



### TEAM OFFICIAL'S MEETINGS

*Team Official meetings will be held at the Event Centre as indicated in the program. Only accredited TEAM OFFICIALS and invited guests (Organizers, IOF officials) have access to the TEAM OFFICIALS MEETINGS. The material will be available 15 minutes prior to the opening of the Team Officials Meetings*

### DEADLINE AND FINAL ENTRIES AND FEES

*Final Entry Forms for Teams (Including for each team member the full name, class/ category, Si card number, country and World Ranking ID only for Elite) must be registered at: [www.orienteingonline.net](http://www.orienteingonline.net) or to be send to Strumica Open official mail: [info@strumicaopen.mk](mailto:info@strumicaopen.mk) .*

#### Important Deadlines and fees

##### Entry until 05.09.2013

*M/W – 12, 14, 16 classes 20eur for all stages or 6eur per stage  
M/W – all other classes 35eur for all stages or 10eur per stage  
Free of charge for M/W10 and Open Classes*

##### Entry until 05.10.2013

*M/W – 12, 14, 16 classes 30eur for all stages or 9eur per stage  
M/W – all other classes 45eur for all stages or 13eur per stage  
Free of charge for M/W10 and Open classes*

*Please Note: Reduced entry fees for competitors from Bulgaria, Moldova, Romania, and Serbia.*







## PAYMENTS

*Payments for all race entries and accreditation fees and accommodation should be paid by one of the following methods:*

*Through a Bank to:*

### PAYMENTS

<b>PAY TO:</b>	<i>Edelvajs Strumica Macedonia St. Braka Miladinovi br.18 2400 Strumica, Macedonia,</i>
<b>IBAN:</b>	<i>MK 07210722000008506</i>
<b>BANK NAME:</b>	<i>NLB Tutunska Banka A.D Skopje</i>
<b>SWIFT:</b>	<i>TUTNMK22</i>
<b>MEMO:</b>	<i>STRUMICA OPEN 2013</i>

*After arrival in the Event Centre.*

*Contact person: Slobodanka Kostova-Financial Director ++38975387607*

## COMPETITION RULES

*The competition will be organized in accordance with the rules for IOF Foot Orienteering Events (Version valid from 1 January 2013)*

*The start interval between two competitors will be as following:*

*Sprint Distance Start interval will be 1 minute,*

*Long Distance Start interval will be 3 minutes,*

*Night Short Start interval will be 1 minute,*

*Middle Distance Start interval will be 2 minutes,*

*See IOF Competition Rules on the IOF website: [www.orienteering.org](http://www.orienteering.org)*





## **START BIBS**

*All competitors must wear their respective start bibs at all the Strumica Open 2013 competitions. The numbers will be handed in the Event Centre after arrival on the team official. In the all 4 races the competitors must wear their start bibs on the front and the same start number will be valid for all 4 races. The start bibs must be visible and they should not be folded over or cut down.*

## **CHECK-IN AND QUARANTINE ZONES**

*There will be quarantine zones for Sprint races and Night Short races. The quarantine zone for Sprint will be located in the school yard and there will have places marked to leave your bags. The quarantine zone for Night Short will be located near start area. The organizer will transport your bags to the finish. Also there will be toilets and water. Athletes and coaches must observe the check-in times for each Strumica Open race. There will be a latest check-in time defined after which no-one will be allowed to enter the quarantine zone any longer. At the check-in to the quarantine zone, each athlete and coach needs to show their accreditation card or another form of identification like start number. The use of mobile phones, computers or any other communication devices inside the quarantine zone is strictly forbidden. It is not allowed to bring any maps of the competition areas into the quarantine.*

## **COACHING AND TEAM ZONES**

### *Team zones*

*Only accredited team members and coaches with their personal Strumica Open accreditation cards will be allowed in the team zones. All the team zones are protected from the weather-rain or sunshine.*

### *Coaching Zones*

*There will be clearly marked Coaching Zones in the all races close to the finish.*

*Team coaches may support their athletes as they pass through.*

*For reasons of fairness only the following actions will be allowed:*

- *Verbal communication – no written information*
- *Exchange of personal equipment such as compasses, shoes....*
- *Food and drinks passed on directly to the athlete*

**14.CLASSES**  
**15.CLOTHING**  
**16.PUNCHING AND TIMING**  
**SYSTEM**



## **CLASSES**

*All classes are listed below:*

*W10, W12, W14, W16, W18, W20, W21E, W21A, W21B, W21C, W35, W40, W45, W50, W55, W60, W65, W75  
M10, M12, M14, M16, M18, M20, M21E, M21A, M21B, M21C, M35, M40, M45, M50, M55, M60, M65, M75  
DM, OPEN 1, OPEN 2, OPEN 3*

## **CLOTHING**

*There are no regulations about clothing. The organizers recommend full – body covered dresses for all races except sprint and night short.*

*Wearing shoes with Dobb spikes is not allowed in the sprint and night races*

## **PUNCHING AND TIMING SYSTEM**

*The punching system used in Strumica Open Competitions will be Sport Ident.*

*Each competitor who will use own SI Card must fill it`s number in the Entry Form.*

*For the Competitors who want to RENT SI Card from Organizers ( 2 euro per SI Card per race)*

*The SI Cards will be given to team leaders when registering on arrival at the event centre and they will be asked to sign a receipt.*

*Team leaders will have to return them at the event centre in one package per team before departure and there will be a 50eur charge for any missing Cards.*

*The Card will be attributed nominally to all Strumica Open Competitors and each Card must be used exclusively by the competitor to whom it has been attributed.*

*Competitors finish time will be measured with Sport Ident equipment.*

*Competitors running time will be measured separate for Night short races, separate for WRE race, and for all other races, Sprint, Long and Middle running time will be measured together for all 3 races.*

*There will be price-giving ceremony one for the Night Sprint and one for all other races.*

*Also, there will be and hand back up system for time measure.*

*The Organizers will use 3 radio controllers for all races for monitoring the results in live.*

*All these could be seen on 2 monitors.*

*Also there will be online live results and the some results can be watched on 2 monitors and online on the official website: [www.strumicaopen.mk](http://www.strumicaopen.mk)*

*The punching and timing equipment will be demonstrated at the technical model (17.10.2013 from 12:00 to 13:00 at the model event) together with the Organization of the start.*



## **TRAINING OPPORTUNITIES**

*There will be provided 3 training maps with 3 different scales (1:4 000 ; 1:10 000; 1:15 000 ). Teams may not train in Strumica/Suvi laki outside the official training areas without the permission of the Organizers.*

*In accordance with official program 17.10.2013 is a day reserved for model event and training (time: 12:00am to 19:00pm) .*

*There will be no medical services provided at the training areas.*

*In Macedonia the medical emergency phone numbers is: 194*

*If you need to call the police, their numbers is: 192*

## **EMBARGOED AREAS**

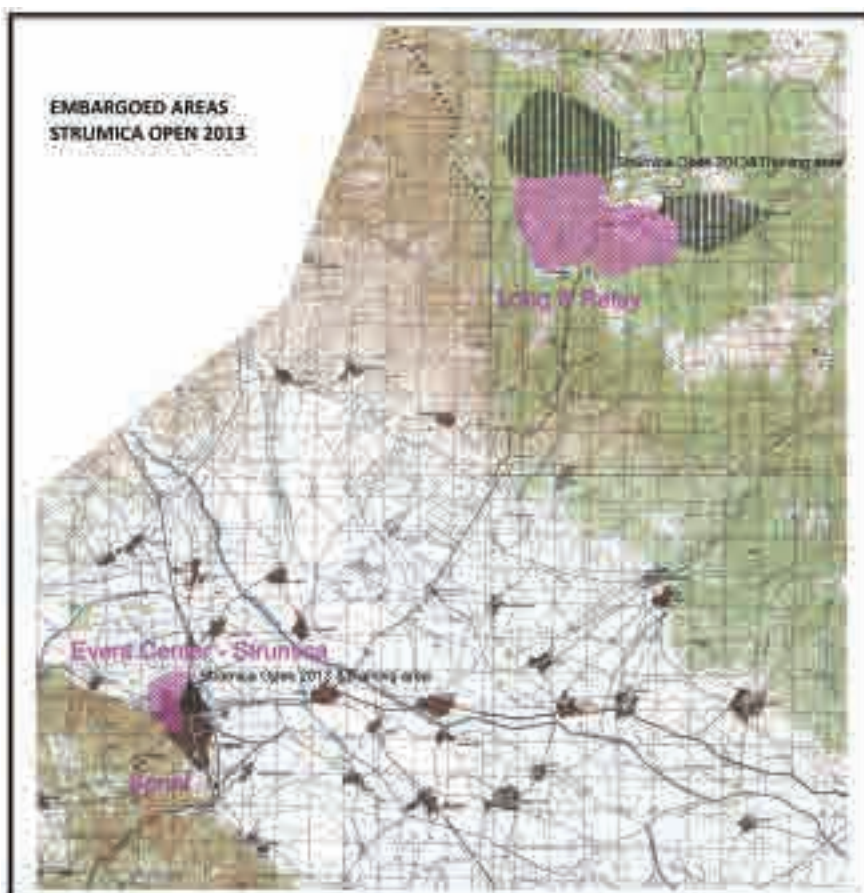
*With reference to the IOF competition Rules (article 26.5) and with a sense of fair-play between athletes, the listed areas are embargoed for all potential Strumica Open team members as well as coaches, team leaders and other persons who may be in position to give information to the team members, until Strumica Open is finished.*

*In the Embargoed areas there will be:*

- No organized orienteering activities may take place in these areas;*
- No training session, route testing, etc. may take place in these areas;*
- No surveying or other use of maps is permitted.*

*This applies to potential participants and to persons who may become team leaders, coaches or similar.*

*It is permissible to pass through the embargoed areas using paved public roads.*





**MAPS DETAILS**

Maps are drawn according to the international specifications for Orienteering maps (ISOM 2000) and the international specifications for sprint orienteering maps (ISSOM 2007) they will be printed on 130gr/m2 paper and issued in sealed plastic bags.

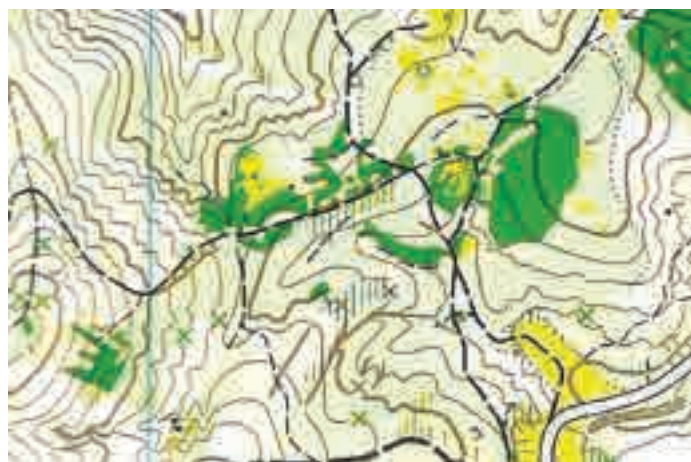
COMPETITION MAP	SCALE	VERTICAL CONTURE INTERVAL	PRINTING
MODEL EVENT/TRAINING	1:4 000 1:10 000 1:15 000	2,5m 5m 5m	Spot Spot Spot
SPRINT DISTANCE	1:4 000	2,5m	Spot
LONG DISTANCE	1:15 000	5m	Spot
MIDDLE DISTANCE	1:10 000	5m	Spot
NIGHT SHORT	1:4 000	2.5m	Spot

All controls will be guarded during the competitions. Officials may or may not be setting close to the control locations.

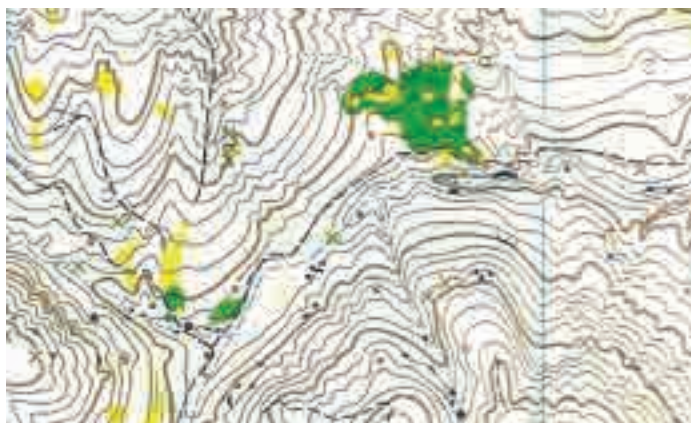
Radio controls are not specified on the control descriptions.



SPRINT AND NIGHT SHORT



MIDDLE



LONG



## TERRAIN DESCRIPTION

### SPRINT

**Terrain :** Flat , urban, with not to high buildings and houses.

**Runnability:** Very good high speed running

### NIGHT SHORT

**Terrain:** City streets and school areas , urban, flat.

**Runnability:** Very good high speed running.

### LONG and MIDDLE

**Terrain:**

*This terrain is situated between 900m and 1200m in altitude. The vegetation alternates between deciduous and coniferous trees, meadows with low vegetation and areas of semi-open forest.*

*There is a forest with high trees, valleys, hills.*

**Runnability:** Good in the meadows and the semi open forest, but can be poor in some areas with very dense vegetation. Running can vary from fast to very slow.

**Visibility:** Generally quite good but can be very limited in areas of dense vegetation.

**Roads, paths and tracks:** The network of paths, roads and tracks is not very dense.

## ACCOMMODATION AND FOOD SERVICES

Accommodation bookings can be made with sending a mail at [info@strumicaopen.mk](mailto:info@strumicaopen.mk) with attach Accommodation and Food Entry Form. The Entry Form for Accommodation and Food can be found in Strumica Open website: [www.strumicaopen.mk](http://www.strumicaopen.mk)

Full Accommodation payment must be done by 15.X.2013 or after arriving in Strumica in the Event Centre.

The Reservation will be made on the **FIRST COME – FIRST SERVE** basis.

The Organizer will provide accommodation in hotels divided in two categories A and B.

**HOTELS IN CATEGORY A** have one bed rooms, double bed rooms, twin rooms, internet, TV, spa, restaurants, conference halls, parking. This category is 4 star Hotels.

Prices:

Per night ..... 20 eur

Per night with breakfast ..... 25 eur

Per night full board .....35 eur

**HOTELS IN CATEGORY B** have one bed rooms, double bed rooms, triple bed rooms, small restaurant, internet , parking. This category is 3 star Hotels.

Per night .....12 eur

Per night with breakfast .....18 eur

Per night full board .....25 eur

Also there will be provided accommodation in sport hall and camping place for tents.

There will be provided toilets and showers and drinking water.

Prices :

Spot Hall - Per night.....3 eur

Per Tent- Per night.....5 eur

Food

Meals and sandwiches may be purchased all days at the finish area.

Strumica is a city with a lot of restaurants, coffee shops, bars , dairy restaurants, so You can find food everywhere in the city and the prices are very affordable.



**ACCOMMODATION ENTRY FORM**

For the STRUMICA OPEN 2013 Orienteering Championships

**“STRUMICA OPEN 2013”, Strumica, Macedonia.**

October 17<sup>th</sup> to 20<sup>th</sup> 2013.

<b>Country</b>	
<b>Address</b>	
<b>Contact person</b>	
<b>Phone, fax</b>	
<b>e-mail</b>	

	Date, day	Time (hour)
Arrival		
Departure		

Hotel **** stars / CATEGORY A (tourist tax and insurance included in the price)		
Per night per person	__ Person x 20 EUR x __ days =	EUR
Per night with breakfast	__ Person x 25 EUR x __ days =	EUR
Per night full board	__ Person x 35 EUR x __ days =	EUR

Hotel *** stars / CATEGORY B (tourist tax and insurance included in the price)		
Per night per person	__ Person x 12 EUR x __ days =	EUR
Per night with breakfast	__ Person x 18 EUR x __ days =	EUR
Per night full board	__ Person x 25 EUR x __ days =	EUR

Accommodation in sport hall and tent / price per person/night (tourist tax and insurance included in the price)		
Sport hall	__ persons x 3 EUR x __ days =	EUR
Per Tent	__ persons x 5 EUR x __ days =	EUR

**TOTAL AMOUNT: EUR**

Place, Date

Signature

**ACCOMMODATION ENTRY FORM SHOULD BE SENT UNTILL:**

**October 05<sup>th</sup> 2013 AT THE LATEST!**

**PLEASE NOTE:** Your entries must be confirmed/reply by organizers within 48 hours!



## **BANQUET**

*The Banquet will be on the 19.X.2013, time- 20.00 pm -24.00 pm, located in one of the restaurants with organized lottery, food, music. Price - 10 eur.*

## **TRANSPORT AND PARKING**

*It is allowed to use own transportation for all events.*

*Can be used all public parking places in the city and parking place in the long and middle distance arenas – free of charge.*

*There are no public transport lines in Strumica.*

*For the officials, VIPs and media there will be provided transport free of charge.*

*Because the distance from the hotels to the Long and Middle arena is about 25km for all other guests there is option to pay for transport from the hotel ( place of accommodation ) to the finish area ( for long and middle ) - 3 eur per day –per person.*

*The Sprint and Night sprint will be held in the city Strumica and there is no need from transport because all places of accommodation are near to the centre of the city.*

### **Regular Bus Lines:**

*Skopje- Strumica – one way 8.5 eur- two ways 11.5 eur.*

*<http://www.sas.com.mk/Schedule.aspx?cid=1055&l=34&ft=from&state=%D0%9C%D0%B0%D0%BA%D0%B5%D0%B4%D0%BE%D0%BD%D0%B8%D1%98%D0%B0&city=%D0%A1%D0%A2%D0%A0%D0%A3%D0%9C%D0%98%D0%A6%D0%90&date=17.10.2013>*

*There is regular bus line from the Airport “Aleksandar the Great” to Skopje - 2.5 eur.*

*<http://skp.airports.com.mk/default.aspx?ItemID=491>*

*Also there is no transport by train and plane directly to Strumica and from Skopje to Strumica. From Skopje You can come just by car or by bus.*

*The organizer can provide transport as follows :*

*Skopje Airport - Strumica –Skopje Airport – 22 eur.*

*Thessaloniki Airport - Strumica -Thesaloniki Airport- 38eur*

*Sofia Airport – Strumica – Sofija Airport- 28 eur.*





<b>REGULAR BUS LINES – SKOPJE – STRUMICA from the bus station Skopje</b>		
<b>Departure</b>	<b>Arrival</b>	<b>Transporet</b>
06:00	09:30	Berovo Trans
08:05	11:00	Rule Turs
10:00	13:30	Strumica Ekspres
12:05	15:00	Rule Turs
13:00	16:00	Strumica Ekspres
14:00	17:30	Strumica Ekspres
15:00	17:00	Strumica Ekspres
15:30	19:00	Strumica Ekspres
16:00	19:30	Strumica Ekspres
17:00	20:00	Strumica Ekspres
17:30	20:30	Strumica Ekspres
18:00	21:00	Strumica Ekspres
19:00	20:00	Strumica Ekspres
20:30	23:50	Strumica Ekspres

<b>REGULAR BUS LINES – STRUMICA - SKOPJE from the bus station Strumica</b>		
<b>Departure</b>	<b>Arrival</b>	<b>Transporet</b>
03:30	06:30	Strumica Ekspres
05:00	08:10	Strumica Ekspres
06:30	09:40	Strumica Ekspres
08:30	11:45	Strumica Ekspres
09:30	12:45	Strumica Ekspres
11:30	14:30	Strumica Ekspres
13:30	16:45	Strumica Ekspres
15:00	18:15	Strumica Ekspres
16:00	19:10	Rule Turs
17:00	19:15	Strumica Ekspres
18:00	21:10	Rule Turs



## LOCAL WEATHER AND CLIMATE

*In October daytime temperatures are from 15 to 25 Celsius.  
During the night between 10 to 20 Celsius.  
For current conditions: [www.weather2umbrella.com](http://www.weather2umbrella.com)*

## VISA REQUIREMENTS

*Citizens from following countries need visa to visit Macedonia:  
Belarus, Moldova and Armenia.  
For all other European countries visitors need just a valid passport to visit Macedonia.*

*More informations for visa requirements to visit Macedonia check here:  
<http://www.mfa.gov.mk/?q=node/308&language=en-gb>*

## 26.MEDIA SERVICES

*There will be Media and Press centre located in the Event Centre. All events will be recorded with cameras and photo.*

*For Sprint and Night short distance the events can be watched on one Big screen .*

## 27.SPONSORS AND PARTNERS

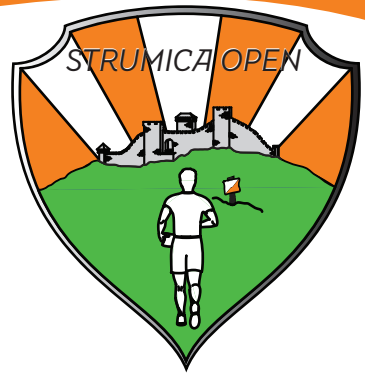


## ADDITIONAL INFORMATIONS

*For Further information please see the official website: [www.strumicaopen.mk](http://www.strumicaopen.mk) or contact the Strumica Open 2013 Organizing Committee:*

*website: [www.strumicaopen.mk](http://www.strumicaopen.mk)*

*e-mail: [info@strumicaopen.mk](mailto:info@strumicaopen.mk)*



### HOST TOWN

**Location:** The Municipality of Strumica is located in the southeastern part of Macedonia . It extends from 41 19' to 41.30' northern latitude and 22° 28' to 22° 49' eastern longitude. Strumica is located at a distance of 22 kilometres from the border with Bulgaria.

**Area:** 322 square kilometres.

**Elevation:** 256 m

**Population:** 54 636 inhabitants, Strumica itself : 35 311 Inhabitants (census 2002 )

**Founded:** First documented in the year 181 under the name Astraion.

**Mountains:** Belasica (1883 m), Ograzden (1746 m), Elenica ( 970 m )

**Rivers:** Strumica ( 34,50 km ) , Vodocha ( 20,50 km ) , Turija ( 9 km ) Trakajna ( 4.96 km ).

**Climate:** Mediterranean.

**Temperatures:** 2/3 of the days in the year the temperature is above 10°C .

**Sunny days:** 230 days , or 2370 hours annually.

**Rainfall:** 600 l /m<sup>3</sup>

**Wind:** northwesterly and southwesterly .

**Time:** Central European Time + 1 hour.

*Strumica (native: Струмица) is a town situated in the south-east of the Republic of Macedonia (close to the Novo Selo-Petrich border crossing with Bulgaria). The population is close to 55,000 with an absolute Macedonian majority (90%). About 150.000 people live in the region surrounding the city. The city is named after the Strumica river which runs through it. The city of Strumica is the seat of Strumica Municipality. Strumica is the main agricultural center in the Republic of Macedonia. It has many textile factories and a developed trade network. According to the last National census from 2007 this municipality has 79.012 inhabitants.*



### Places to visit



#### **Roman Bath Bansko**

*At 12 km from the town of Strumica, at the northern foot of Mount Belasitza, located are strong hot water springs with a temperature of 72 °C. The source is located in the village of Bansko, which is the main reason why water baths once got the present name. Near the source "Parilo" located is the Roman bath, which was built in the II century AD. This area covers more than 1500 m<sup>2</sup> and is one of the largest baths in the Balkans.*

*Most of the 11 rooms have different functions and are mainly built of brick and stone combined with the mortar. Heating inside was designed and constructed with a special system in which hot water was used to heat the floors and walls. The bathroom is designed like most Roman buildings and was in the spirit of the health needs of the Roman culture. The roman bath had also a dressing room (apoditerium) for the clothes, and in the area called "dipterium" the sick were massaged with oil. The room "tepidarium" was located among the hot bath (sauna) and cold bath (frigidarium). The main place was occupied by the baths and tub pool whose depth was about 1.5 m, and the pool was gained by stairs. The sunlight entered through the windows, which made private and intimate atmosphere.*

*Destruction of this sanatorium happened in VI century AD. Thermo sources are five in number, of which only one, is the largest expert captured. It flows into the main bath called "Turkish Bath" and four other freely wreak with no particular catchments, and only one part flows into the bathroom "Salandzha". The water temperature in the source does not change during the year, which proves that comes from great depth and without weathering. The temperature of the water sources is about 71 degree in the spring, which supplies the main, Turkish bath, a source that supplies "Salandzha" is a temperature of 56 degrees. The site "Roman bath" in Bansko is one of the few preserved Roman monuments of its kind in Europe.*

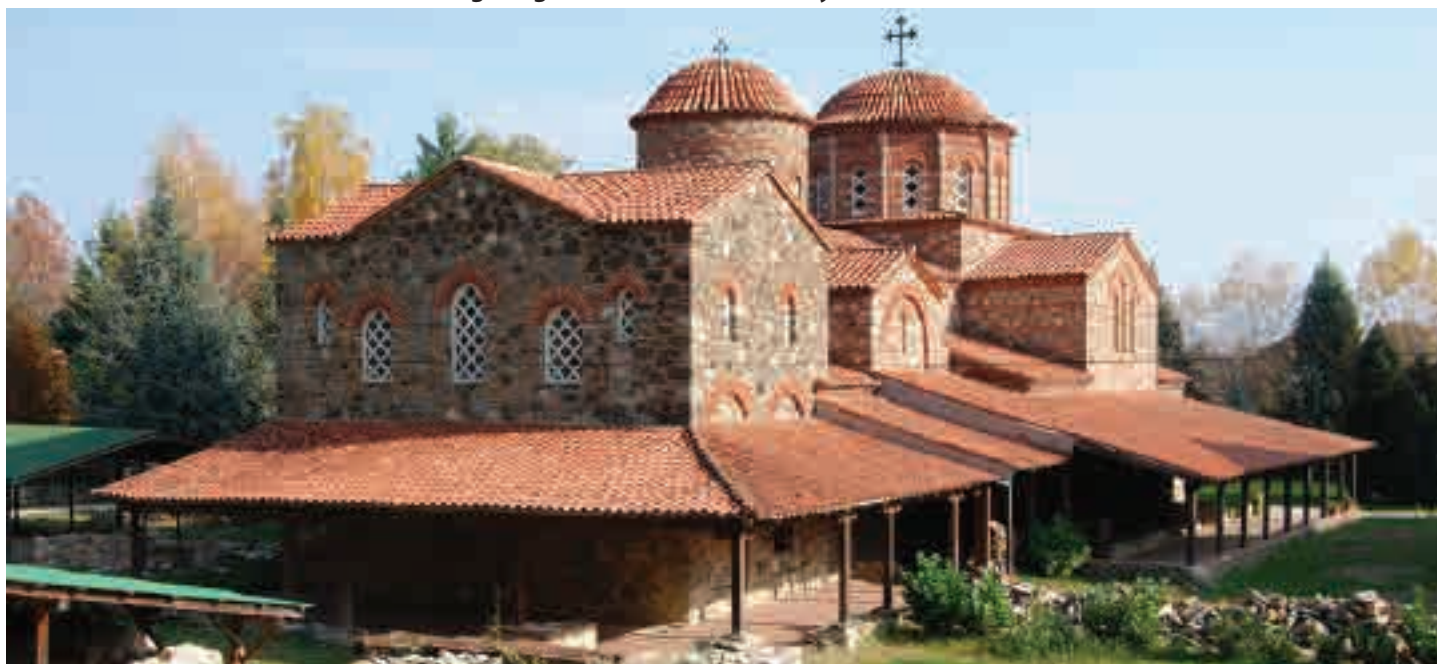


### Places to visit

## ST. LEONTIJ

The monastery church "St. Leontij" in Vodoca, most probably dating from Czars Samuel's period, was the seat of the Strumica Bishopric. There are indicators that lead us to believe that in the monastery, about 1000 years ago copying of the religious books was made from Greek into the Old Slav language.

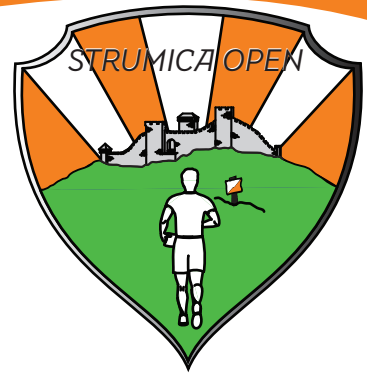
Bearing in mind the fact that the fresco painting in "St. Leontij" are quite identical with the ones in the Ohrid church "St. Sofia" and the church "St. Vraci" in Kastoria, Aegean Macedonia, the age of the Vodoca church may be approximately determined: the end of the tenth and beginning of the eleventh century, and even earlier.



## THE HOLY MOTHER OF GOD ELEUSA

The monastery church in Veljusa "The Holy Mother of God Eleusa" (Gracious), was built in 1080 by the Strumica bishop Manuil. By the end of the eleventh century, i.e. somewhere about 1093, a part of its rich fresco painting was completed. In fact, the oldest frescoes dating from the eleventh century are most preserved and are located on the southern wall, while the remains of the fresco paintings on the western and northern wall of the southern aisle and in the narthex, mainly date from the second half of the twelfth century. The church is extremely small by size and practically square shaped, its basis being in the form of a four-leaf clover. Nevertheless, as a whole, it is of remarkable value and, we could even say, a luxurious high style artistic structure.





### Places to visit

#### **Smolare Waterfall**

*It can be found above the village of Smolare, at an elevation of 630 meters, located deep in the Belasica Mountains where the Lomnica River springs hidden among the hundred-years-old beech trees. The waterfall is a unique waterfall in Macedonia with the water falling from the height of 39,5 meters, the tallest waterfall in Macedonia.*

*It is located above the village of Smolare in the Municipality of Novo Selo in the southeastern region of the country. The waterfall is part of the Lomnica River and is located deep in Mount Belasica at an elevation of 630 metres. Crashing down the smooth, black rock face, and surrounded by 100-year-old beech trees, this waterfall is visited by tourists throughout the year, largely by train. To reach the majestic beauty of Smolare Falls, visitors must wind their way up a nature path that includes 300 stone steps made from natural materials.*

*Once at the site, deep within the forest, tourists can gaze at the waterfall from a wooden bridge constructed in front of the crashing water, enjoying the refreshing spray at the waterfall collides with the rock face and meets the river below. Visitors can also enjoy the picnic and camping areas constructed at the base of the path, as well as a marketplace opened in 2007 for residents to sell locally produced products such as fresh fruits and vegetables, honey, and crafts.*





### Places to visit

#### **Kolesino Waterfall**

*It is enchanting in every season. During the summer it will refresh you with its clean mountain air, and in winter it will astonish you with its frozen beauty. It is found at an elevation of 610 meters on the Baba River in the heart of the Belasica Mountain, surrounded by maple trees and stone cliffs. The water of this waterfall falls from the height of 19 metres. Imagine walking through a forest on a relaxing sunny afternoon hike. It is a pleasant day and the temperatures in the mountain village are cooler and the air is more refreshing than the heat of the valley.*

*Your path crisscrosses a small stream. At a small bridge you stop and peer into the crystal, clear water at the crayfish swimming just below the surface. You continue; the path is parallel to the stream and then crosses it again with another small, wooden bridge. For a moment you get lost in the artistry of nature in springtime bloom and you forget your destination. But then you hear it. It's the sound of rushing water and you look ahead. Around the bend you begin to see it: Kolesino Waterfall.*

*Nestled within the foliage of Belasica Mountain, above the village of Kolesino, is the Kolesino Waterfall. With pure, clear water from the Baba River, the Kolesino Waterfall gently flows over the hillside in a beautiful and rhythmic ballet of multiple watery streams. After this brief 19 meter dance (62 ft.), these various streams reform into the river and carry on down the mountain.*

*You can enjoy these Kolesino Waterfall from a variety of viewpoints, whether the bridge directly in front of the waterfall or from one of the resting benches to the side. If you feel particularly adventurous, an additional path winds up the side of the hill and you can stand alongside the river as it slips down below. There are even covered gazebo areas for picnicking if you that wish to have a brief snack at the site.*





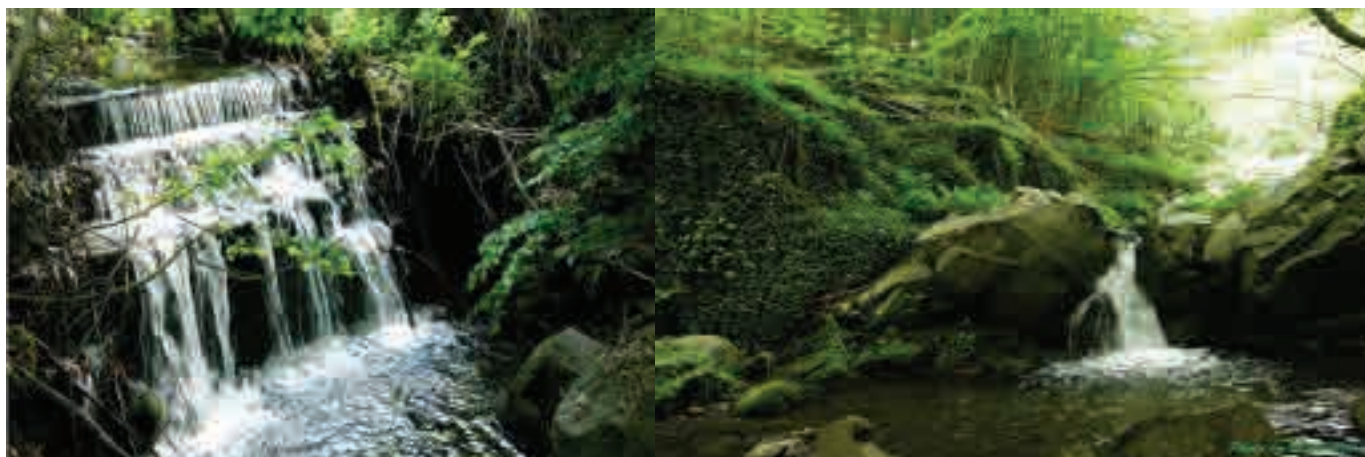
## Places to visit

### Gabrovo Waterfall

*In the underarms of the Belasica Mountain, hidden from the public eyes the Gabrovo Waterfall is situated. The location of the waterfall is right across the village of Gabrovo, after which the name of the waterfall was given, and 15 kilometers from the city of Strumica. On a distance of one kilometer there are three smaller waterfalls, high from 4 to 8 metres, and their clean ice cold water flows out through the large and spread beech trees. The slap of the highest waterfall flows in to the middle waterfall, and the middle flows in to the smallest waterfall and together the water flows through the last house in the village Gabrovo. The crossing of the waterfall and the fall of the water from one to another is the reason that makes this landmark so attractive, interesting and different from the other two famous waterfalls in the region. Many tourists have found their escape in the wild nature, but the bravest and the adventurous ones can climb through the tightly and sharp rise of the paths that entwine the mysterious Belasica mountain. In this untouched idyll you can only hear the babbling of the water falling and the singing of the birds.*

*The waterfalls are so magnificent and mysterious, that you will get the impression that they dictate the life of the mountain. Gabrovo is a village with traditional Macedonian houses typical for the underbelasica region. The nature is wild and unique, like time stopped in this village. The villagers say that a little is missed for this village to become the number one tourist destination not only for the tourists from Macedonia but for the ones out of the state. They hope that this will be the beginning of a beautiful story for which none has heard, a story for a lost paradise that holds place in the middle of a century beech wood, for the untouchable heaven on Belasica for which it is to be heard from now on.*

*The village of Gabrovo is one location that is inescapable for the tourist eye and offers great opportunities for country tourism. Besides the far known first waterfall now the second and the third one are accessible for the tourists, as a result of the Municipality of Strumica's project for equipping and reconstruction of the Gabrovo waterfall. This locality now offers 5 villas for barbecue of snacks, sitting desks and tables, trash cans, stone marked paths and three bridges that give an easier access to the last and the most beautiful waterfall. For the opportunity to make the visit unforgettable between the second and the third waterfall there is the Gabrovo Cave that still is an enigma for the population in the village. Municipality of Strumica does not stop here, but will go on with the education of the population of the village for attracting even more and more tourists on local level, national and international level.*







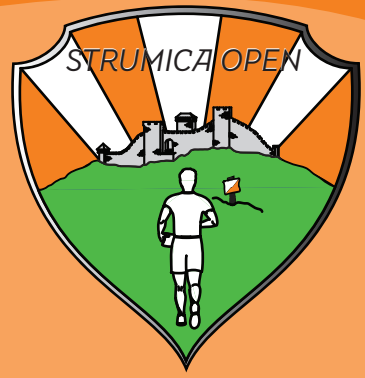
**Event centre**



**Competition places**



**Competition places**



## **CONTACT INFORMATION**

### **STRUMICA OPEN 2013**

Macedonia, Strumica

[www.strumicaopen.mk](http://www.strumicaopen.mk)

e-mail: [info@strumicaopen.mk](mailto:info@strumicaopen.mk)

facebook: [facebook.com/strumicaopen.macedonia](https://facebook.com/strumicaopen.macedonia)

twitter: [strumicaopen](https://twitter.com/strumicaopen)



### **BULLETIN No. 3**

Bulletin No. 3 with more details about the event can be expected in October 2013.

## **WELCOME TO MACEDONIA**