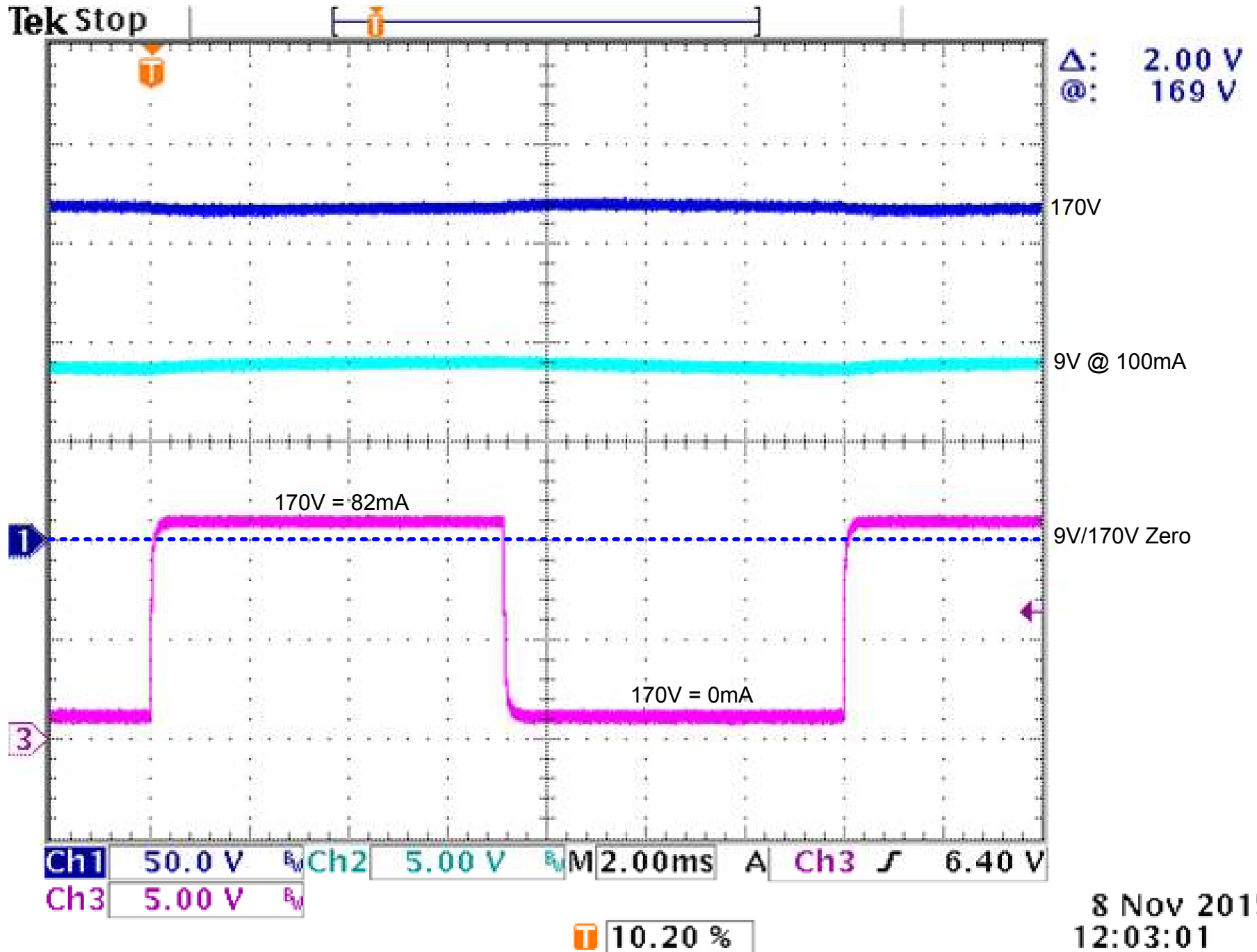


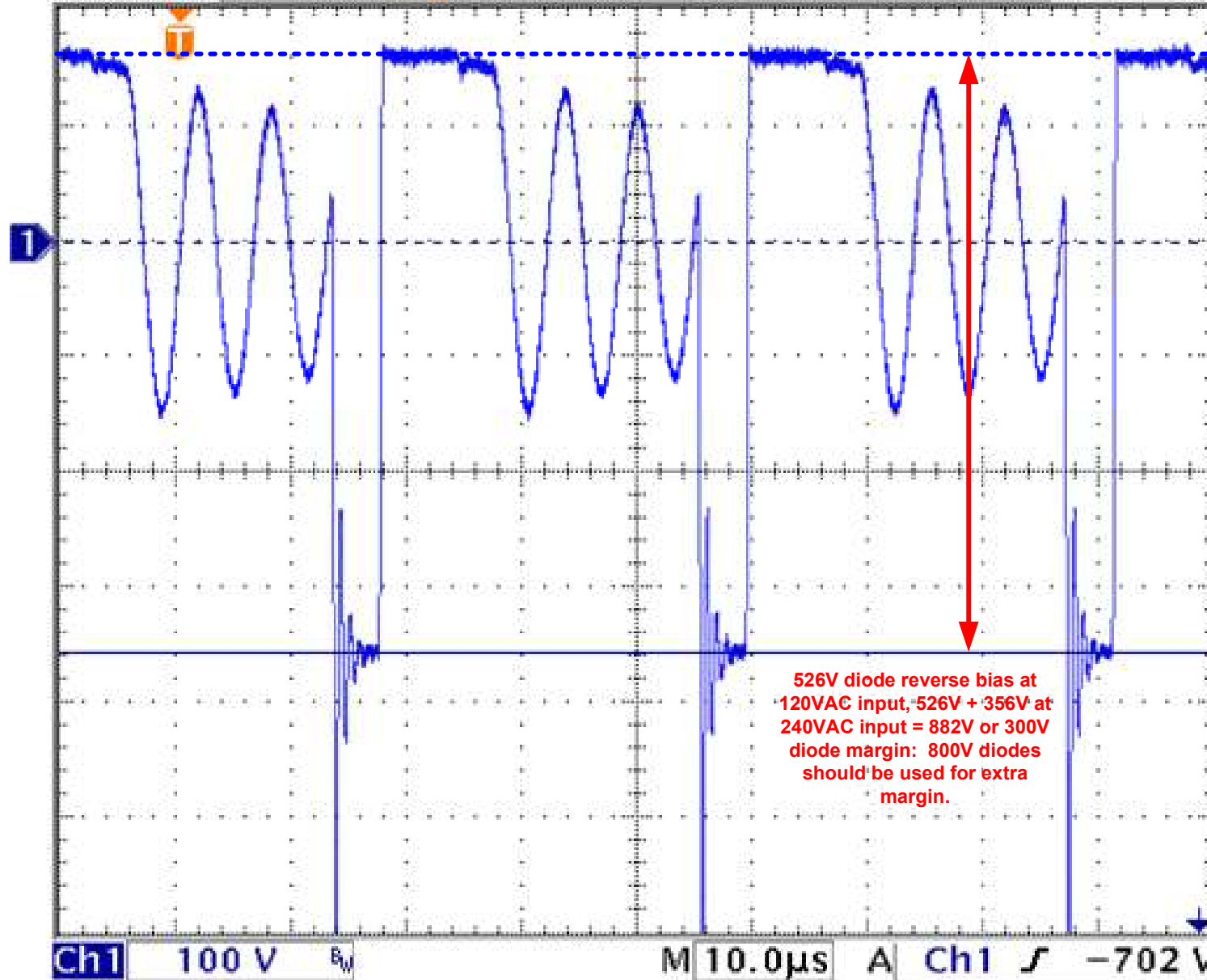
CINCON 1509 170V MOD: TRANSIENT RESPONSE WITH 1.3W ACTIVE PRELOAD



8 Nov 2015
12:03:01

CINCON 1509 170V MOD: 600V x 2 RECTIFIER STRESS

Tek PreVu



Δ: 356 V
@: -356 V
170V FWD BIAS
PRIMARY OFF TIME

9V/170V Zero

Ch1 Freq
31.42kHz

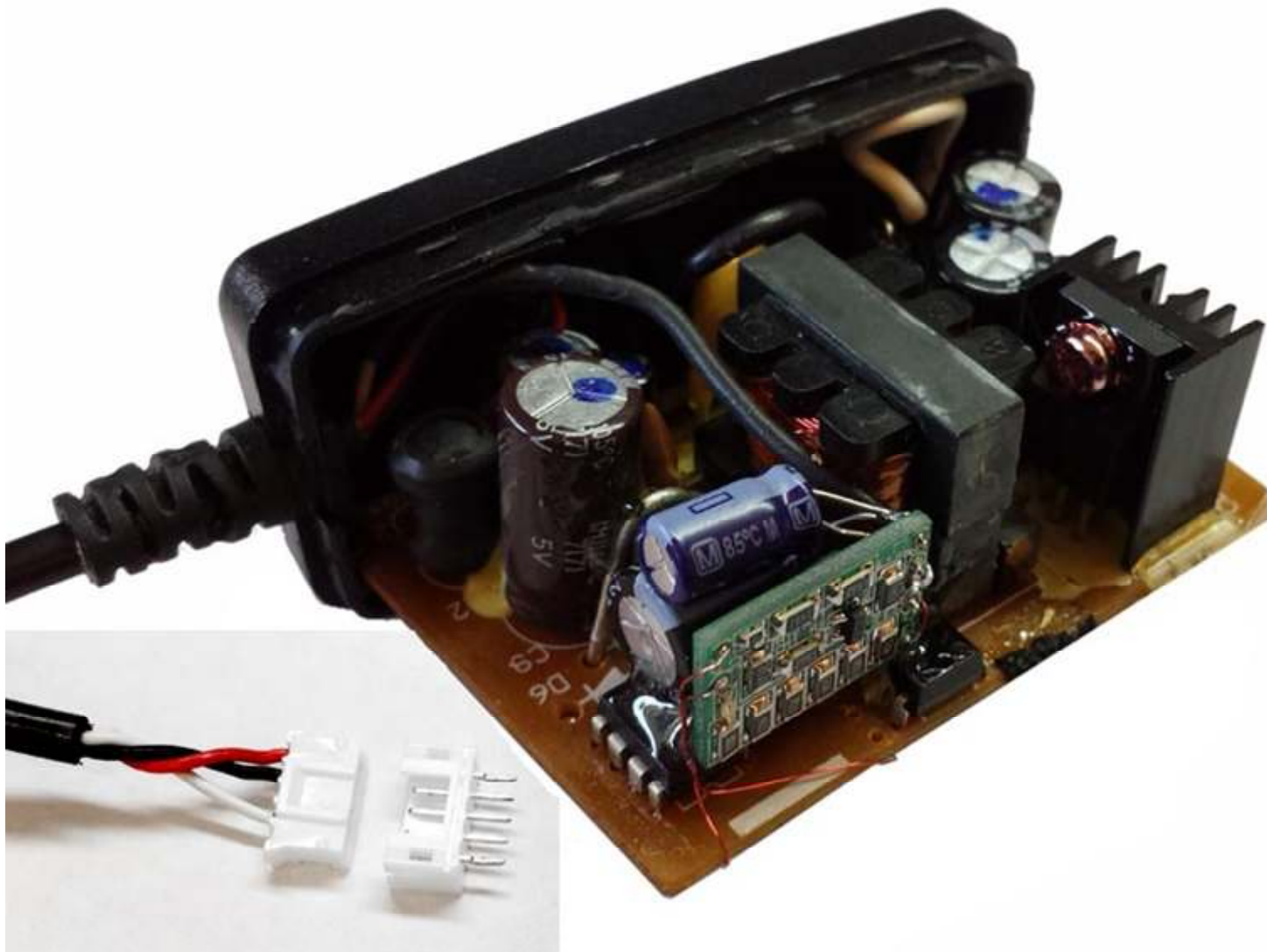
-356V REV BIAS
PRIMARY ON TIME

526V diode reverse bias at
120VAC input, -526V + 356V at
240VAC input = 882V or 300V
diode margin: 800V diodes
should be used for extra
margin.

10.40 %

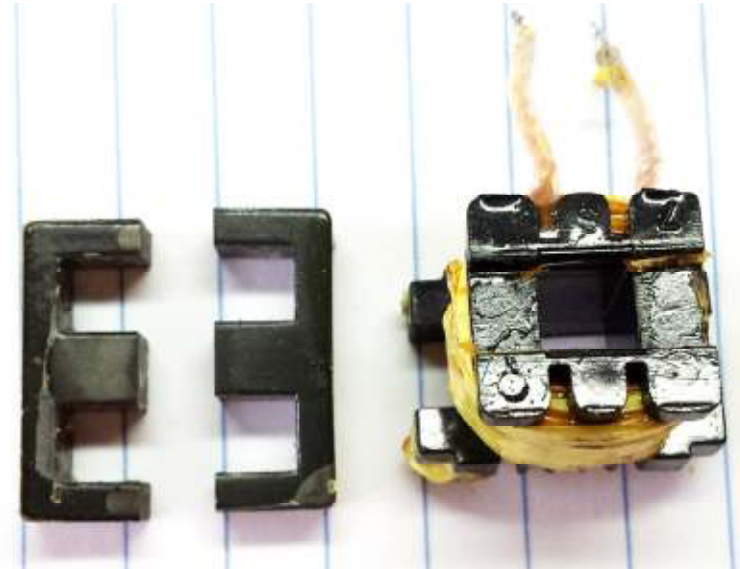
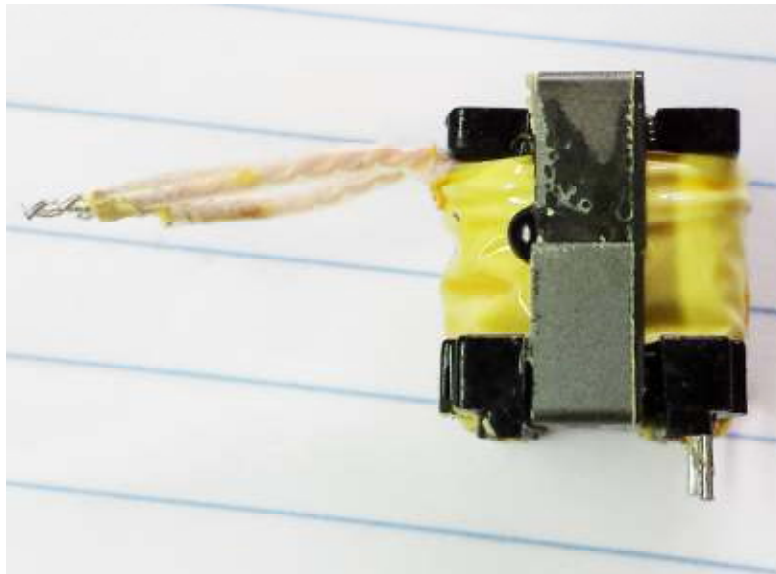
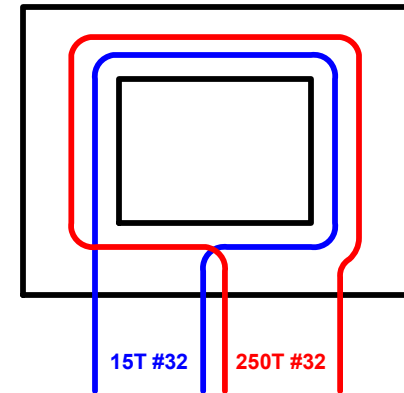
8 Nov 2015
15:42:35

CINCON 1509 170V MOD: ACTIVE PRELOAD AND OUTPUT CABLE



CINCON 1509 170V MOD: TRANSFORMER REMOVAL AND REWIND

1. Desolder 4 pins on primary side of transformer. Desolder flying leads on secondary side and cut them off of T1.
2. Insert thermocouple between PWB and transformer and heat to 100C. Pry up at thermocouple end and remove T1.
3. Cut off two epoxy dots from core legs with knife.
4. Insert thermocouple between core and windings and heat to 150C. Pry top core away from bobbin and then push out bottom core by pushing out at center post.
5. Remove secondary over wrap and secondary winding.
6. Clean excess varnish from core and bobbin.
7. Wind 15T #32 followed by 250T #32 with tap between windings, exit both windings at bottom of bobbin except for end of 250T which exits at top.
8. Over wrap windings with 3 layers of Kapton and replace core.



CINCON 1509 170V MOD: PWB IMAGES

