



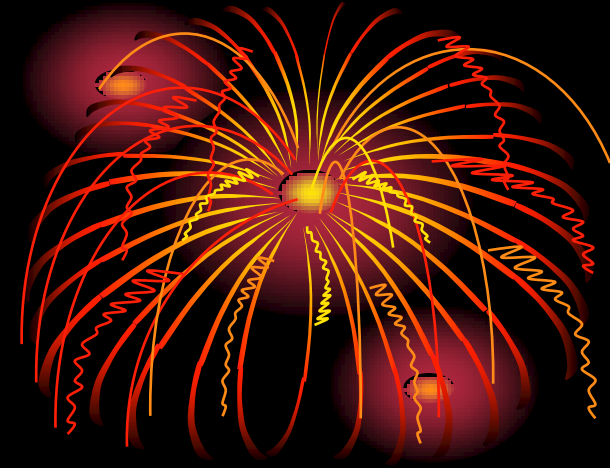
Sample Cherry Picks

- 2010

**- Nishit Vadhavkar &
Lakshmi Ramchandran**

- 05th November 2010

UTV



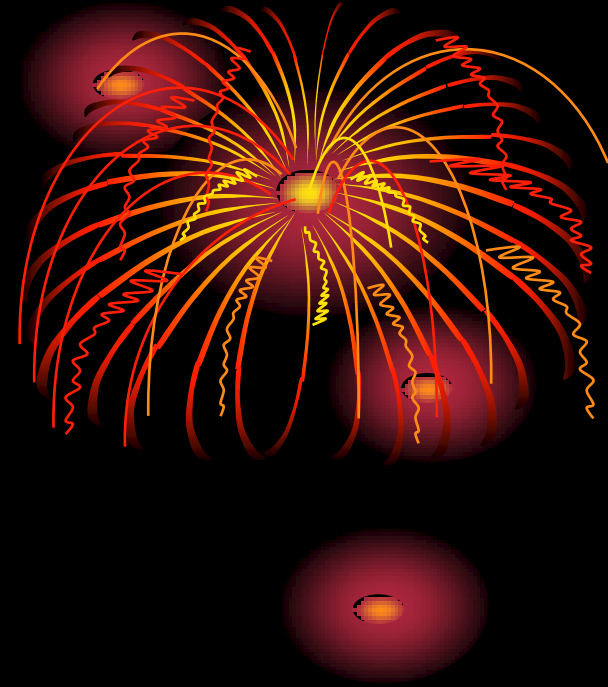
- **Well diversified portfolio**
- **Disney holds a significant stake in the company, may take it over in the future**
- **Promoters are old hands in the business**
- **Broadcasting, film distribution, gaming are some of the key focus areas**
- **Develops content for Television channels and own TV channels**
- **Low dependence on Ad revenues**

Technicals



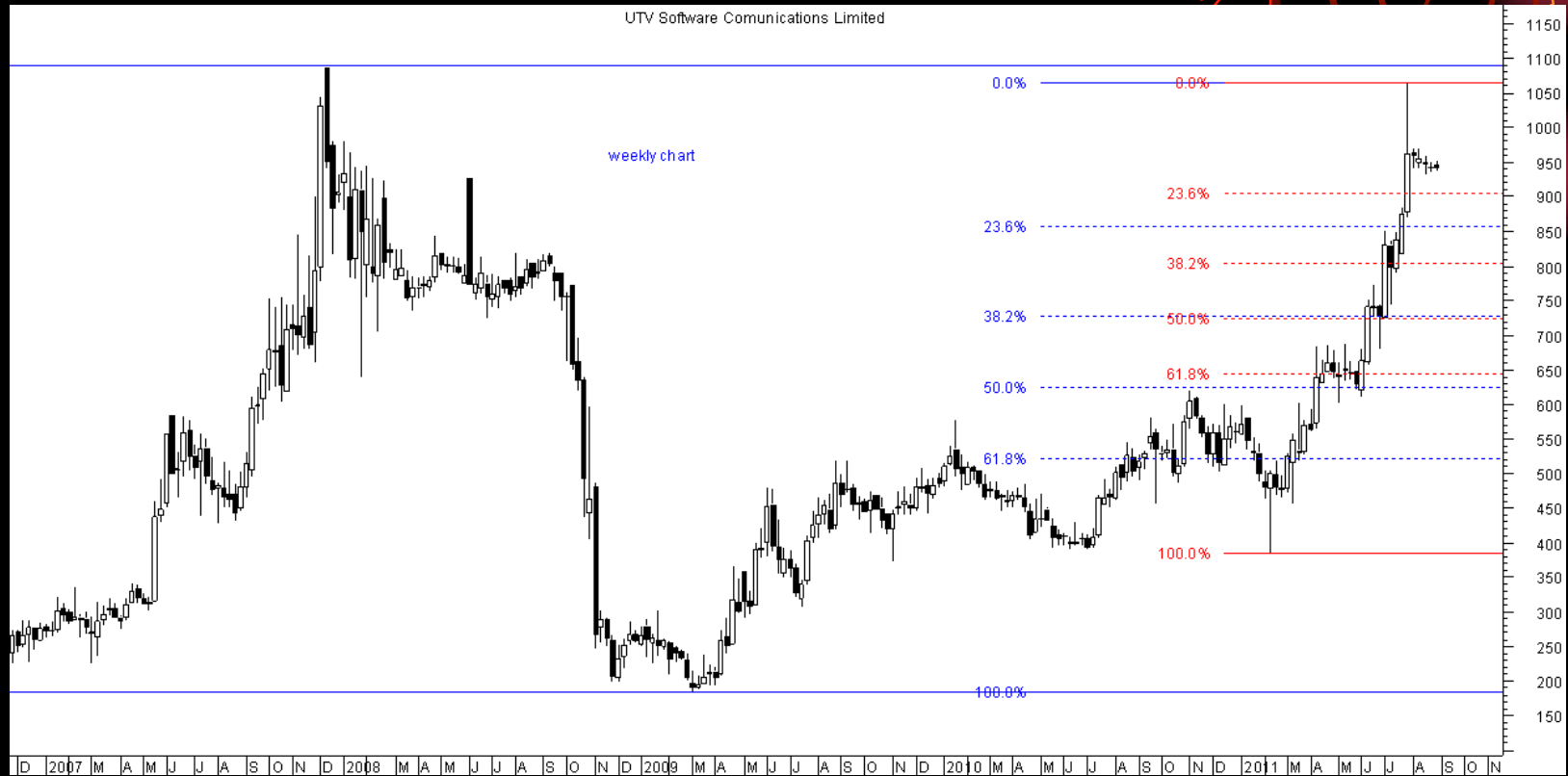
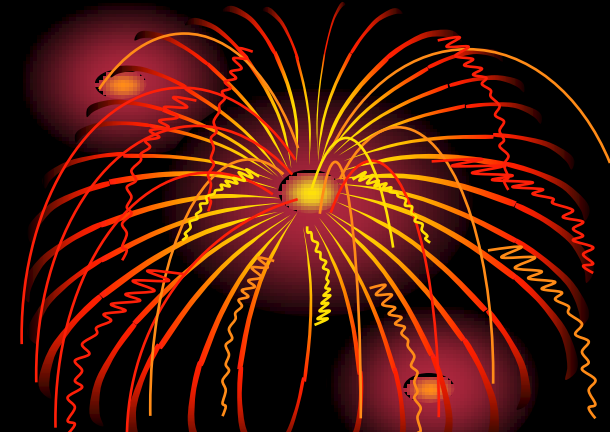
CMP

607

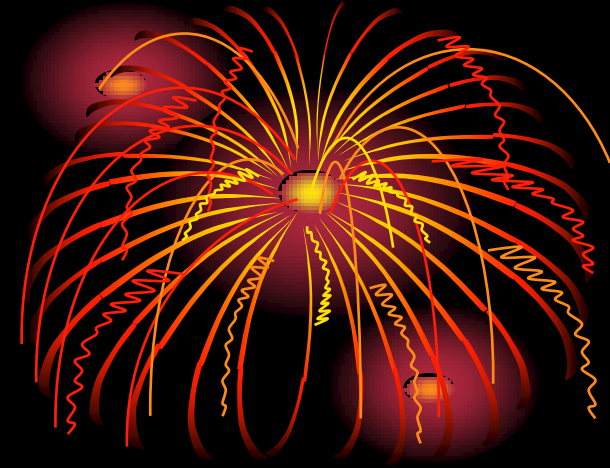


Market Under Performer
Stop Loss: 490
Target: 965

Technical Charts

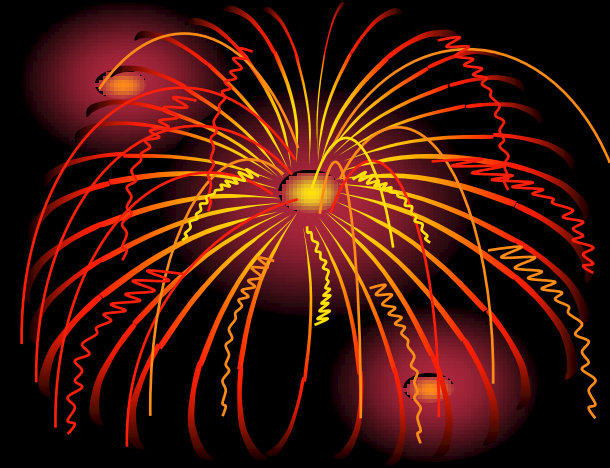


Levels to Buy



Name	CMP	52 week high	52 week low	2008 bottom	2010 top	Watch	Add	Buy	Strong Buy	Div Yield	EPS	P/E	Indicator
UTV	507	620	183	183	620	454	402	322	286	0.65	32	15.84	not now

Thank You



Contact us: Nishit
(nishv77@gmail.com)

Lakshmi
(lucks1956@gmail.com)



Nishit V and Lakshmi R

6