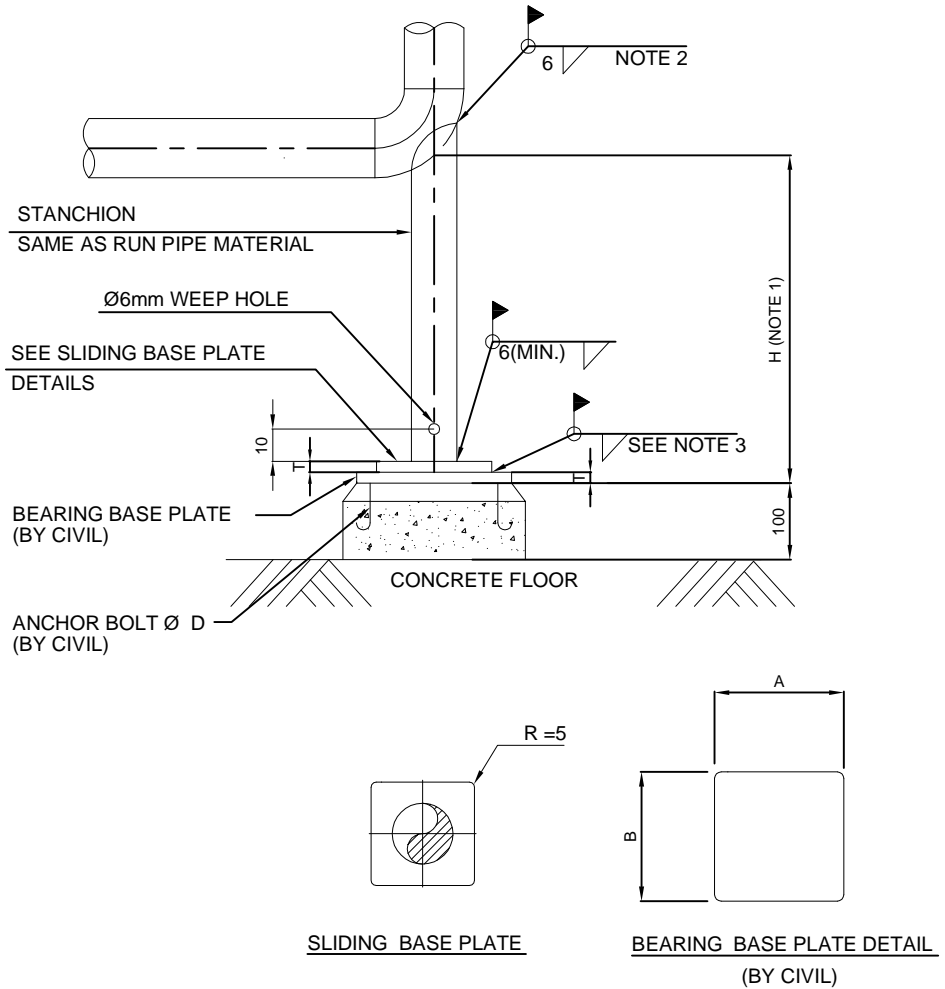


# ELBOW SUPPORT

**MATERIAL:**

ASTM A36 OR EQVT



**NOTES:**

- 1) H TO BE ADJUSTED AT SITE.
- 2) DUMMY WELD DO NOT BURN THROUGH RUN PIPE.
- 3) WELD SLIDING BASE PLATE FOR ANCHORING PURPOSE ONLY

NOMINAL PIPE SIZE	STANCHION PIPE	H (mm)	SLIDING BASE PLATE	BEARING PLATE		
				A	B	T
DN100	3" SCH 40	NOTE 2	150 SQ.x6	190	190	6
DN150	4" SCH 40	NOTE 2	175 SQ.x8	220	220	8
DN200	6" SCH 40	NOTE 2	230 SQ.x10	270	270	10
DN250	8" SCH 40	NOTE 2	280 SQ.x10	320	320	10
DN300	10" SCH 40	NOTE 2	335 SQ.x10	390	390	10
DN350	10" SCH 40	NOTE 2	335 SQ.x10	390	390	10
DN400	12" STD WT	NOTE 2	385 SQ.x13	440	440	13
DN450	14" STD WT	NOTE 2	420 SQ.x16	470	470	16
DN500	14" STD WT	NOTE 2	420 SQ.x16	470	470	16
DN600	14" STD WT	NOTE 2	420 SQ.x16	470	470	16

JOB NO:	20039	PROJECT	KCE	JEL DWG NO.	KCE-J-P-PJ-SP-3006	REV. 0
---------	-------	---------	-----	-------------	--------------------	-----------