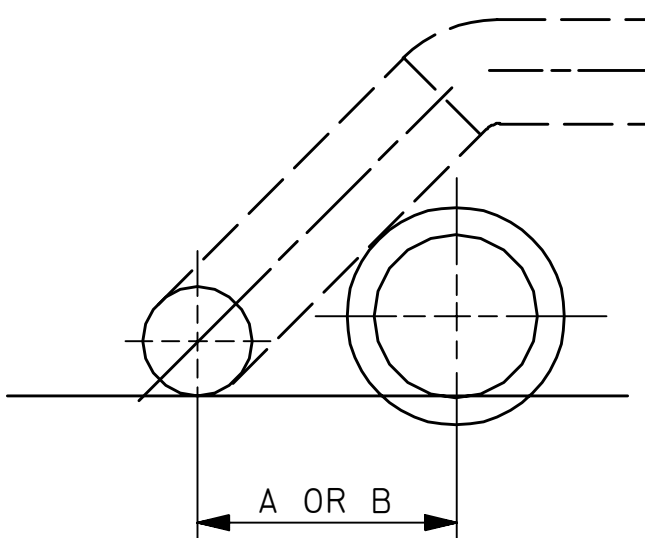
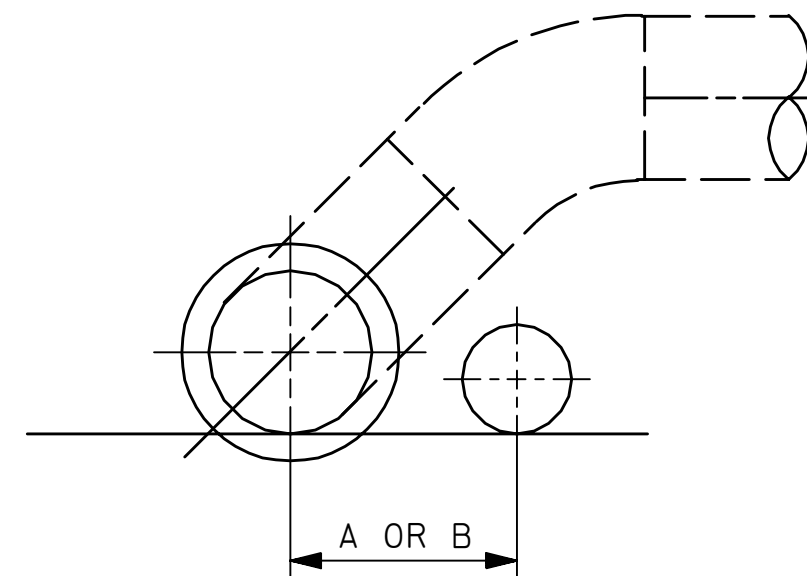


Ø1	Ø01	Ø0290-BV	L	Ø66
REV. NO.	SHT. NO.	DRAWING NUMBER	INDEX	PLANT NO.



SEE NOTES

NOTES:

1. SPACINGS SHOWN ARE FOR PIPE IN ABOVE GRADE PIPEWAYS.
2. A = MINIMUM SPACING OF 330mm BETWEEN PIPE SURFACES WHEN BOTH PIPES ARE GREATER THAN 12 IN. DIAMETER, OTHERWISE SPACING ALLOWED FOR ASME CLASS 600 FLANGES STAGGERED ON EITHER LINE. (SEE NOTE 5)
B = SPACING REQUIRED FOR 45° JUMPOVERS. SPACING "A" ALLOWS FOR 45° JUMPOVERS WHENEVER PIPE SIZES OF INTEREST ARE LEFT OF HEAVY LINE.
3. FOR PIPE SIZES NOT LISTED USE NEXT LARGER SIZE.
4. IN CASES WHERE LINES ARE INSULATED, THIS TABLE MAY NOT PROVIDE ADEQUATE CLEARANCE. A SEPARATE CHECK SHOULD BE MADE. SEE NOTES AND DETAILS ON DRAWING AA-036911 AND AA-036913.
5. FOR PIPE SIZES 44 IN. AND UP, SPACING IS BASED ON ASME CLASS 150 FLANGES.
6. ALL METRIC VALUES OF LINEAR DIMENSION ARE IN MILLIMETERS.
7. FOR TWO LINES CROSSING EACH OTHER, THE MINIMUM PIPE WALL TO PIPE WALL CLEARANCE SHALL BE PER SAES-L-011.

JUMPOVER LINE (in)

CROSSED OVER LINE (in)

	1"		2"		3"		4"		6"		8"		10"		12"		14"		16"		18"		20"		22"		24"		26"		28"		30"		32"		34"		36"		38"		40"		42"		44"		46"		48"	
	A	B	A	B	A	B	A	B	A	B	A	B	A	B	A	B	A	B	A	B	A	B	A	B	A	B	A	B	A	B	A	B	A	B	A	B	A	B	A	B	A	B	A	B	A	B	A	B				
1"	100	125	150	175	200	250	225	300	275	380	300	430	300	480	330	535	355	610	380	660	405	710	430	785	455	840	455	915	480	965	510	1040	510	1090	535	1145	560	1245	585	1295	610	1370	535	1420	560	1500	585	1550				
2"	125	150	175	200	225	250	250	300	300	380	300	430	330	480	355	535	380	610	405	660	430	735	455	785	480	840	510	915	510	965	535	1040	560	1090	585	1145	610	1245	635	1320	635	1370	585	1420	610	1500	610	1550				
3"	150	175	175	200	250		275	330	300	380	330	455	355	480	380	560	405	610	430	660	455	735	480	785	510	865	535	915	535	990	560	1040	585	1090	610	1170	610	1270	635	1320	660	1370	610	1450	635	1500	635	1575				
4"	175	200	200	225	250		300	330	330	380	355	455	380	480	405	560	430	610	455	685	480	760	510	785	535	865	560	915	560	990	585	1040	610	1120	635	1170	635	1270	660	1320	685	1400	635	1450	660	1525	660	1575				
6"	200	225	250	250	300		330		355	405	380	455	405	510	430	560	455	635	480	685	535	760	535	810	560	865	610	940	610	990	635	1065	660	1120	685	1170	685	1270	710	1345	735	1400	685	1475	710	1525	710	1600				
8"	225	250	275	300	330		355		380	405	405	480	430	510	480	585	510	635	535	685	585	760	585	810	610	890	635	940	660	1015	685	1065	685	1120	710	1195	735	1295	760	1345	785	1420	735	1475	760	1550	760	1600				
10"	275	300	300	330	355		380		430		455	480	455	535	510	585	535	635	560	710	610	785	610	840	635	890	685	965	685	1015	710	1065	735	1145	760	1195	785	1295	785	1370	810	1420	785	1500	785	1550	810	1600				
12"	300	300	330	355	380		405		455		460		685		710		735		760		790		810	840	840	915	865	965	890	1015	915	1090	940	1145	965	1220	990	1320	1015	1370	1040	1420	1065	1500	1090	1550	1120	1625				
14"	300	330	355	380	405		430		455		685		710		735		760		790		810	865	840	915	865	965	890	1040	915	1090	940	1170	965	1220	990	1320	1015	1370	1040	1420	1065	1500	1090	1550	1120	1625						
16"	330	355	380	405	430		480		510		710		710		735		760		785		810	840	865	915	890	990	915	1040	940	1120	965	1170	990	1245	1015	1320	1040	1370	1065	1450	1090	1500	1120	1575	1145	1625						
18"	355	380	405	430	455		510		535		735		735		760		785		810		840	865	890	940	915	990	940	1065	965	1120	990	1195	1015	1245	1040	1320	1065	1400	1120	1450	1120	1525	1120	1575	1170	1650						
20"	380	405	430	455	480		535		560		760		760		785		810		840		865	890	915	940	940	1015	965	1065	990	1120	1015	1195	1040	1245	1065	1345	1090	1400	1120	1450	1145	1525	1170	1575	1195	1650						
22"	405	430	455	480	535		585		610		785		785		810		840		865		890	915	940		965	1015	990	1065	1015	1145	1040	1195	1065	1270	1090	1345	1120	1420	1145	1475	1170	1525	1195	1600	1220	1650						
24"	430	455	480	510	535		585		610		810		810		840		865		890		915	940		965	990	1040	1015	1090	1040	1145	1065	1220	1090	1270	1120	1370	1145	1420	1170	1500	1195	1550	1220	1625	1245	1675						
26"	455	480	510	535	560		610		635		840		840		865		890		915		940	965		990		1015	1040	1040	1090	1065	1170	1090	1220	1120	1295	1145	1370	1170	1420	1195	1500	1220	1550	1245	1625	1270	1675					
28"	455	510	535	560	610		635		685		865		865		890		915		940		965	990		1015		1040		1065	1120	1090	1170	1120	1245	1145	1295	1170	1400	1195	1450	1220	1500	1245	1575	1270	1625	1295	1700					
30"	480	510	535	560	610		660		685		890		890		915		940		965		990	1015		1040		1065	1090	1120	1120	1195	1145	1245	1170	1295	1195	1400	1220	1450	1245	1525	1270	1575	1295	1650	1320	1700						
32"	510	535	560	585	635		685		710		915		915		940		965		990		1015	1040		1065	1090		1120	1145	1145	1195	1170	1245	1195	1320	1220	1400	1245	1475	1270	1525	1295	1600	1320	1650	1345	1700						
34"	510	560	585	610	535		685		735		940		940		965		990		1015		1040	1065		1090	1120		1145	1170	1195	1270	1220	1320	1245	1420	1270	1475	1295	1550	1320	1600	1345	1650	1370	1725								
36"	535	585	610	635	685		710		760		965		965		990		1015		1040		1065	1090		1120	1145		1170	1195	1220	1220	1270	1245	1345	1270	1420	1295	1500	1320	1550	1345	1600	1370	1675	1395	1725							
38"	560	610	610	635	685		735		785		990		990		1015		1040		1065		1090	1120		1145	1170		1195	1220	1245	1245	1320	1270	1370	1295	1450	1320	1500	1345	1550	1370	1625	1400	1675	1420	1750							
40"	585	635	635	660	710		760		785		1015		1015		1040		1065		1090		1120	1145		1170	1195		1220	1245	1270	1270	1320	1295	1400	1320	1450	1345	1500	1370	1575	1400	1650	1420	1700	1450	1750							
42"	610	635	660	685	735		785		810		1040		1040		1065		1090		1120		1145	1170		1195	1220		1245	1270		1295	1345	1320	1400	1345	1450	1370	1525	1400	1575	1420	1650	1450	1700	1475	1780							
44"	535	585	610	635	685		735		785		1065		1065		1090		1120		1145		1170	1195		1220	1245		1270	1295		1320	1345	1345	1400	1370	1475	1400	1525	1420	1600	1450	1650	1475	1725	1500	1780							
46"	560	610	635	660	710		760		785		1090		1090		1120		1145		1170		1195	1220		1245	1270		1295	1320		1345	1370	1370	1420	1400	1475	1420	1550	1450	1600	1475	1675	1500	1725	1525	1780							
48"	585	610	635	660	710		760		810		1120		1120		1145		1170		1195		1220	1245		1270	1295		1320	1345		1370	1400	1420	1420	1500	1450	1550	1475	1600	1500	1675	1525	1725	1550	1805								

ALL VALUES IN MILLIMETERS

CONSOLIDATED SH. 001 & 002 INTO SH. 001 METRIC VALUES ONLY

DWG. RESPONSIBILITY :
PIPING STANDARDS COMMITTEE

10	NOV96	RCR	REVISED NOTES & CHGD. MANDATORY DWG. TO DWG. RESPONSIBILITY NOTE			
09	07-24-96	WAS	REV. NOTES 2,4,5,6 & 7	ORIG. SIGNED	ORIG. SIGNED	ORIG. SIGNED
08	12-23-87	SAS	REDRAWN FOR CLARITY	ORIG. SIGNED	ORIG. SIGNED	ORIG. SIGNED
REV. NO.	DATE	BY	DESCRIPTION	CHKD.	CERT.	APPD.

SAUDI ARABIAN OIL COMPANY

DRAWN BY	H.D.	CHECKED BY	SCALE
DATE STARTED		DATE COMPLETED	08-04-48
OPR'G. DEPT.		ENG. DEPT.	
APP'D FOR CONSTR.			

THIS DRAWING IS NOT TO BE USED FOR CONSTRUCTION OR FOR ORDERING MATERIAL UNTIL CERTIFIED AND DATED
CERTIFIED BY _____ DATE _____

PIPE SPACINGS

STD. DWG. METRIC

PLANT NO.	INDEX	DRAWING NUMBER	SHT. NO.	REV. NO.
990	L	AB-036207	001	10