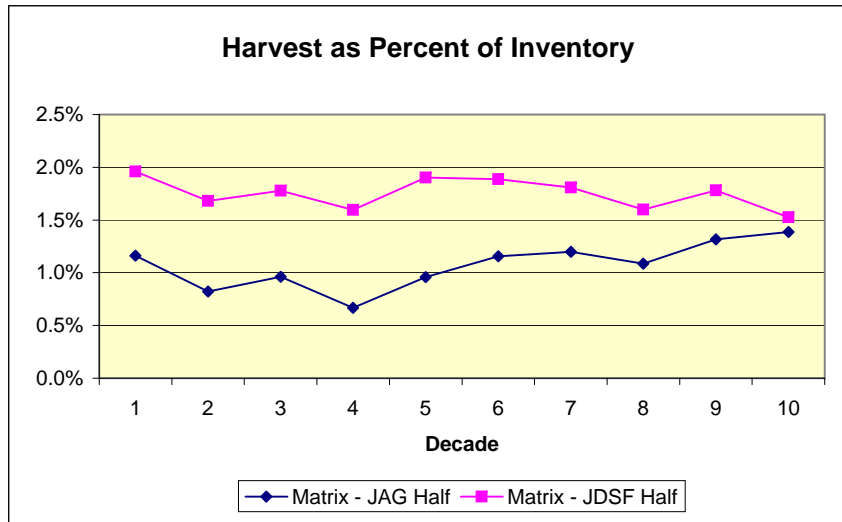
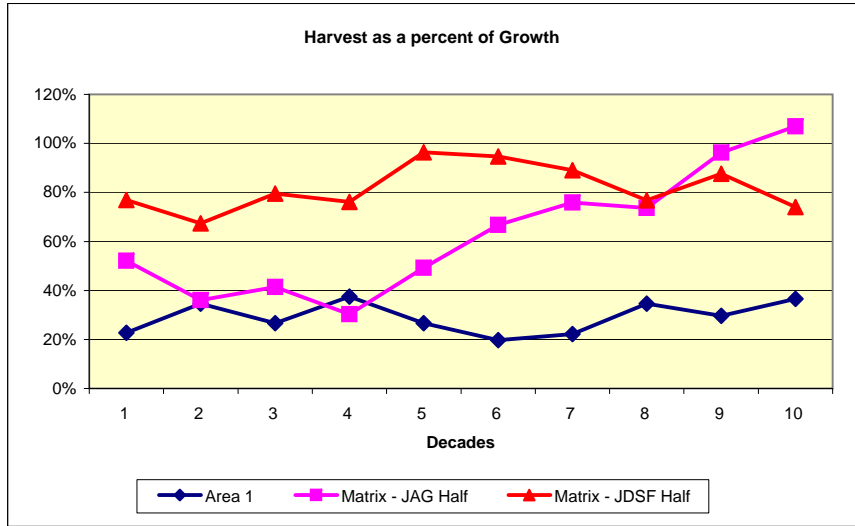
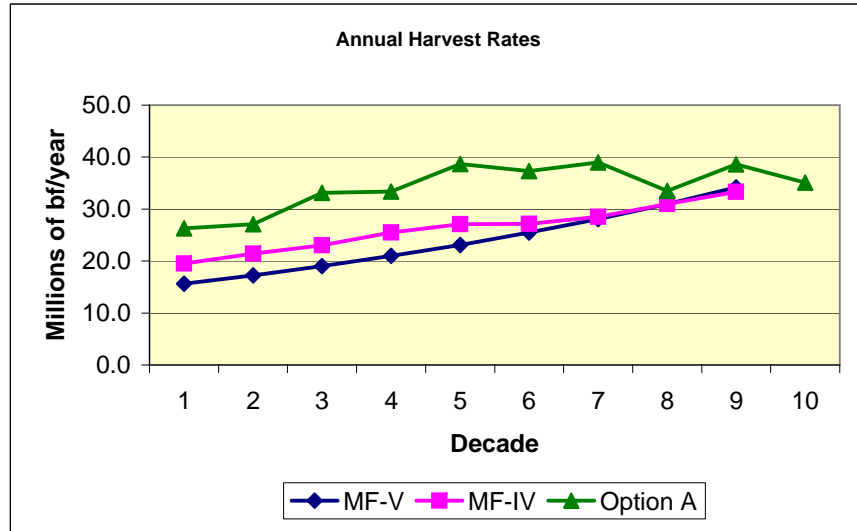


Helge's Projection of May 25, 2011(MF-IV) Compared to Helge's January 15, 2011 Projection (MF-IV) and the Option A Projection



Period 1 Values for May 25, 2011 Projection (MF-V)

Analysis Area 2 (Matrix, JAG Half):

Inventory (bf)	Growth (mbf/year)	Harvest (mbf/year)	Harvest /Growth (%)
443,282,411	9,870	5,145	52%

Analysis Area 3 (Matrix, JDSF Half):

Inventory (bf)	Growth (mbf/year)	Harvest (mbf/year)	Harvest /Growth (%)
461,580,011	11,753	9,043	77%