

EXNO:10

DATE:

E-TICKETING SYSTEM

PROBLEM STATEMENT

To create an E-Ticketing software that will meet the needs of the applicant and help them to registering the tickets in the project, modification in database and cancellation for the registered project.

OVERALL DESCRIPTION

The E-Ticketing System is an integrated system that has four modules as part of it. the four modules are

Registration for the ticket

In this module, the user can register for the tickets, Modification in the ticket database, canceling the tickets.

Train details

In this module the user can search for the trains by giving train-no in the project.

Fare Details

In this module the administrator and the user can add the data's like the train name, train no passenger name, address, train fare details and modification can be done.

Cancellation for the ticket

In this module the user can cancel their name which is registered for the tickets.

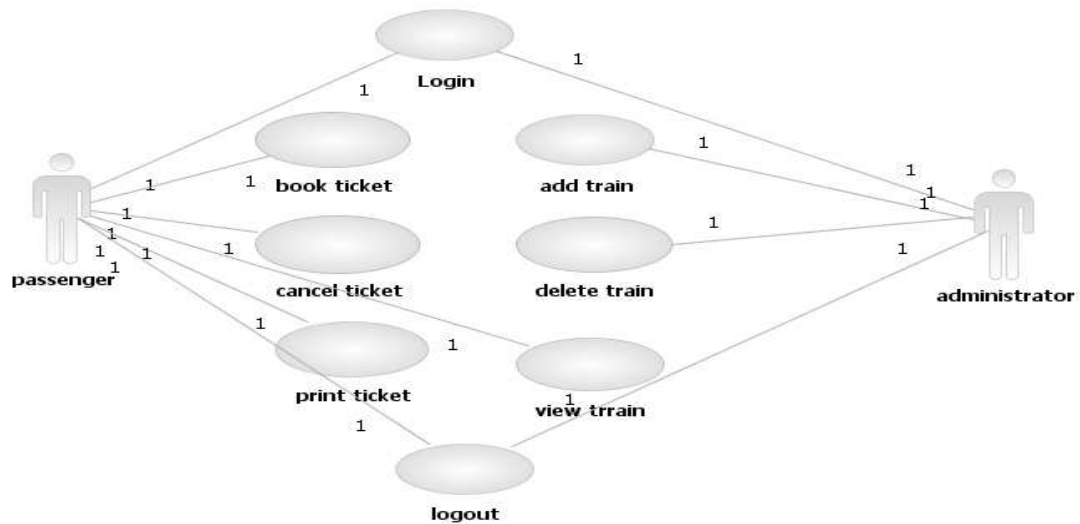
SOFTWARE REQUIRMENTS

1. Microsoft Visual Basic 6.0
2. Rational Rose
3. Microsoft Access

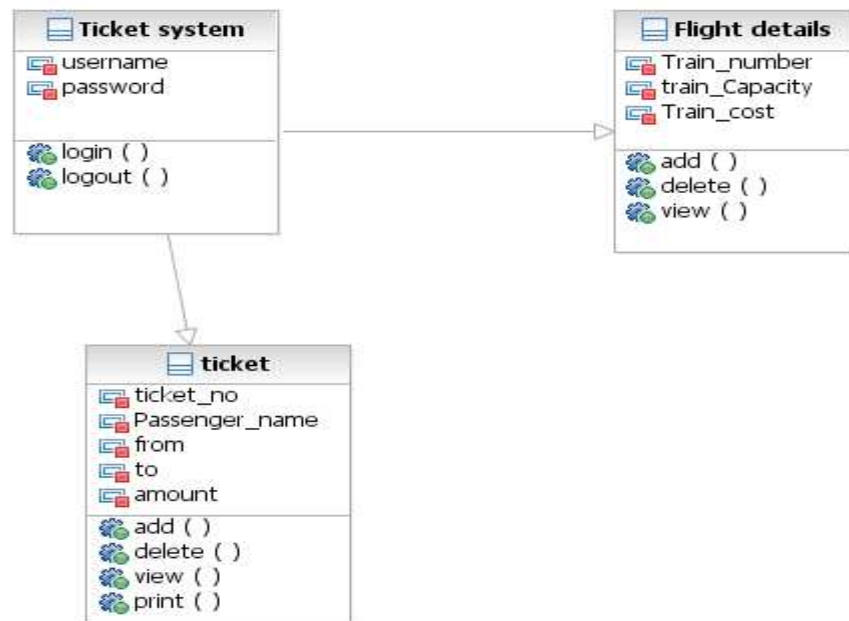
HARDWARE REQUIRMENTS

1. 128MB RAM
2. Pentium III Processor

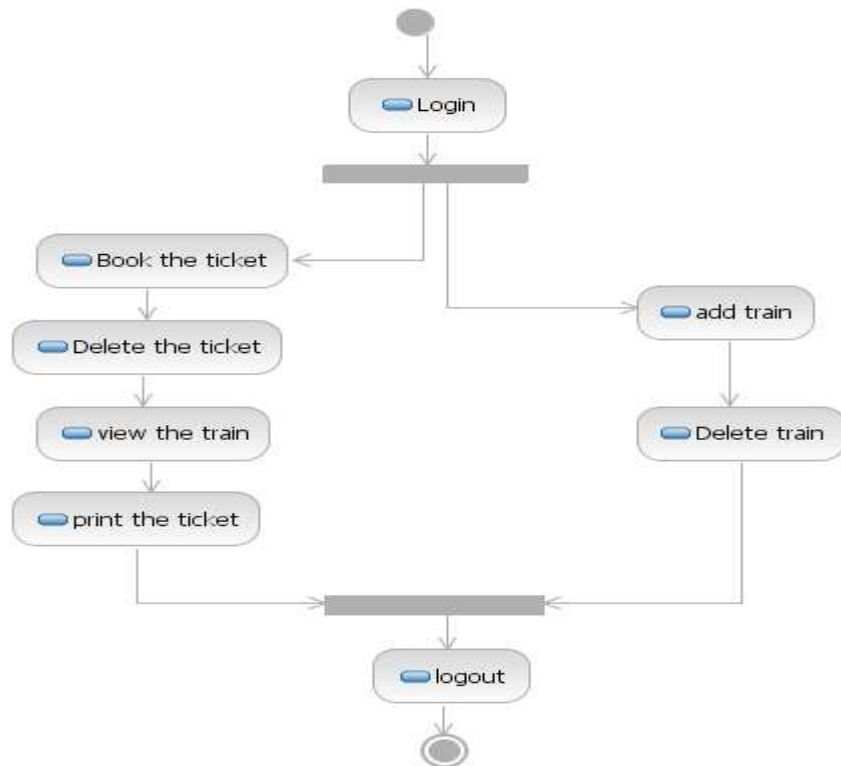
UMLDIAGRAM:



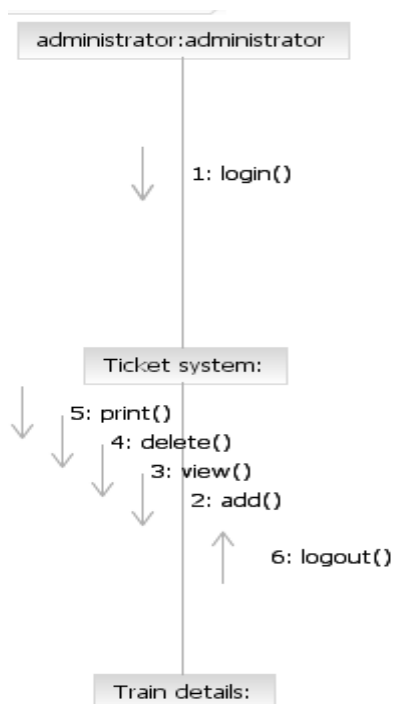
CLASS DIAGRAM:



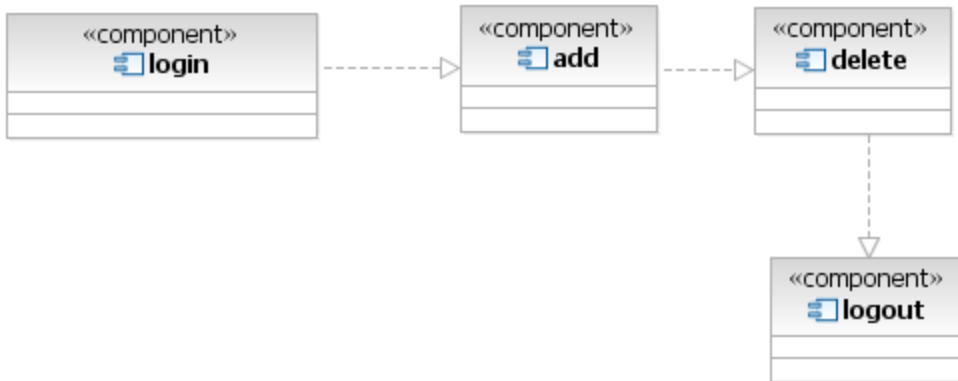
ACTIVITY DIAGRAM:



COLLABARATION DIAGRAM:



COMPONENT DIAGRAM:



CODING:**CANCELLATION FORM:**

```
Dim cn As ADODB.Connection
```

```
Dim rs As ADODB.Recordset
```

```
Dim s As String
```

```
Private Sub Cmdback_Click()
```

```
Form8.Show
```

```
Form7.Hide
```

```
End Sub
```

```
Private Sub Cmdcancel_Click()
```

```
s = "delete from reserve where Train_number=" & Combo1.Text & ""
```

```
cn.Execute (s)
```

```
MsgBox "one record deleted"
```

```
Combo1.Text = ""
```

```
Text2.Text = ""
```

```
Text3.Text = ""
```

```
Text4.Text = ""
```

```
Text5.Text = ""
```

```
Text8.Text = ""
```

```
Text6.Text = ""
```

```
Text7.Text = ""
```

```
Text9.Text = ""
```

```
Text10.Text = ""
```

```
Text11.Text = ""
```

```
Text12.Text = ""
```

```
End Sub
```

```
Private Sub Cmdclear_Click()
```

```
Combo1.Text = ""
```

```
Text2.Text = ""
```

```
Text3.Text = ""
```

```
Text4.Text = ""
```

```
Text5.Text = ""
```

```
Text8.Text = ""
```

```
Text6.Text = ""
```

```
Text7.Text = ""
```

```
Text9.Text = ""
```

```
Text10.Text = ""
```

```
Text11.Text = ""
```

```
Text12.Text = ""  
End Sub
```

```
Private Sub Cmdsearch_Click()  
rs.Close  
rs.Open "select * from reserve where Train_number='" & Combo1.Text & """  
On Error GoTo er  
Combo1.Text = rs.Fields(0)  
Text2.Text = rs.Fields(1)  
Text3.Text = rs.Fields(2)  
Text4.Text = rs.Fields(3)  
Text5.Text = rs.Fields(4)  
Text8.Text = rs.Fields(5)  
Text6.Text = rs.Fields(6)  
Text7.Text = rs.Fields(7)  
Text9.Text = rs.Fields(8)  
Text10.Text = rs.Fields(9)  
Text11.Text = rs.Fields(10)  
Text12.Text = rs.Fields(11)  
Exit Sub  
er:  
MsgBox "record not found"  
End Sub
```

```
Private Sub Form_Load()  
Set cn = New ADODB.Connection  
cn.Open ("Provider=MSDAORA.1;Password=tiger;User ID=scott;Persist Security Info=True")  
Set rs = New ADODB.Recordset  
rs.Open "select * from reserve", cn, adOpenKeyset, adLockOptimistic  
Combo1.AddItem "3049\3050"  
Combo1.AddItem "3415\3414"  
Combo1.AddItem "3073\3074"  
Combo1.AddItem "1067\1068"  
Combo1.AddItem "4007\4008"  
Combo1.AddItem "4013\4012"  
Combo1.AddItem "4015\4016"  
Combo1.AddItem "4863\4864"  
End Sub
```

```
Private Sub HOME_Click()  
Form3.Show  
Form7.Hide
```

End Sub

Private Sub REPORT_Click()

DataReport1.Show

End Sub

RESERVATION FORM:

Dim cn As ADODB.Connection

Dim rs As ADODB.Recordset

Dim s As String

Private Sub Back_Click()

Form8.Show

Form6.Hide

End Sub

Private Sub Cmdadd_Click()

If (Combo1.Text = "") Then

MsgBox "blank record not possible"

Else

s = "insert into reserve values(" & Combo1.Text & "," & Combo2.Text & "," & Text1.Text & "," & Text2.Text & "," & Text3.Text & "," & Text7.Text & "," & Text8.Text & "," & Text9.Text & "," & Text4.Text & "," & Combo5.Text & "," & Text5.Text & "," & Text6.Text & ")"

cn.Execute (s)

MsgBox "Ticket Reserved"

MsgBox "Happy Journey"

Combo1.Text = ""

Combo2.Text = ""

Text1.Text = ""

Text2.Text = ""

Text3.Text = ""

Text7.Text = ""

Text8.Text = ""

Text9.Text = ""

Text4.Text = ""

Combo5.Text = ""

Text5.Text = ""

Text6.Text = ""

End If

End Sub


```
Private Sub Cmdclear_Click()
```

```
Combo1.Text = ""
```

```
Combo2.Text = ""
```

```
Text1.Text = ""
```

```
Text2.Text = ""
```

```
Text3.Text = ""
```

```
Text7.Text = ""
```

```
Text8.Text = ""
```

```
Text9.Text = ""
```

```
Text4.Text = ""
```

```
Combo5.Text = ""
```

```
Text5.Text = ""
```

```
Text6.Text = ""
```

```
End Sub
```

```
Private Sub Form_Load()
```

```
Set cn = New ADODB.Connection
```

```
cn.Open ("Provider=MSDAORA.1;Password=tiger;User ID=scott;Persist Security Info=True")
```

```
Set rs = New ADODB.Recordset
```

```
rs.Open "select * from reserve", cn, adOpenKeyset, adLockOptimistic
```

```
Combo1.AddItem "3049\3050"
```

```
Combo1.AddItem "3415\3414"
```

```
Combo1.AddItem "3073\3074"
```

```
Combo1.AddItem "1067\1068"
```

```
Combo1.AddItem "4007\4008"
```

```
Combo1.AddItem "4013\4012"
```

```
Combo1.AddItem "4015\4016"
```

```
Combo1.AddItem "4863\4864"
```

```
Combo2.AddItem "Howrah-Amritsar Express"
```

```
Combo2.AddItem "Malda-Bhiwani Farakka Express"
```

```
Combo2.AddItem "Allahabad-Faizabad Saryu Express"
```

```
Combo2.AddItem "Varansi-Lucknow Varuna Express"
```

```
Combo2.AddItem "Patna-New Delhi Shramzeevi Express"
```

```
Combo2.AddItem "Sultanpur-New Delhi Sadbhavana Express"
```

```
Combo2.AddItem "Raxaul-New Delhi Sadbhavana Express"
```

```
Combo2.AddItem "Bombay-Faizabad Saket Express"
```

```
Combo5.AddItem "First class"
```

```
Combo5.AddItem "Two_Tier"
```

```
Combo5.AddItem "Three_Tier"
```

```
End Sub
```

```
Private Sub HOME_Click()  
Form3.Show  
Form6.Hide  
End Sub
```

```
Private Sub REPORT_Click()  
DataReport1.Show  
End Sub
```

FARE DETAILS:

```
Dim cn As ADODB.Connection  
Dim rs As ADODB.Recordset  
Dim s As String
```

```
Private Sub Cmdadd_Click()  
If (Combo1.Text = "") Then  
MsgBox "blank record not possible"  
Else  
s = "insert into fare_detail values('" & Combo1.Text & "','" & Combo2.Text & "','" & Text5.Text  
& "','" & Text6.Text & "','" & Text7.Text & "','" & Text8.Text & "','" & Text9.Text & "','" &  
Text10.Text & "','" & Text11.Text & "')"  
cn.Execute (s)  
MsgBox "one record added"  
Combo1.Text = ""  
Combo2.Text = ""  
Text5.Text = ""  
Text6.Text = ""  
Text7.Text = ""  
Text8.Text = ""  
Text9.Text = ""  
Text10.Text = ""  
Text11.Text = ""  
End If  
End Sub
```

```
Private Sub Cmdclear_Click()  
Combo1.Text = ""  
Combo2.Text = ""  
Text5.Text = ""  
Text6.Text = ""  
Text7.Text = ""
```

```
Text8.Text = ""
Text9.Text = ""
Text10.Text = ""
Text11.Text = ""
End Sub
```

```
Private Sub Cmddelete_Click()
s = "delete from fare_detail where Train_number=" & Combo1.Text & ""
cn.Execute (s)
MsgBox "one record deleted"
Combo1.Text = ""
Combo2.Text = ""
Text5.Text = ""
Text6.Text = ""
Text7.Text = ""
Text8.Text = ""
Text9.Text = ""
Text10.Text = ""
Text11.Text = ""
End Sub
```

```
Private Sub Cmdexit_Click()
Form8.Show
Form10.Hide
End Sub
```

```
Private Sub Cmdsearch_Click()
rs.Close
rs.Open "select * from fare_detail where Train_number=" & Combo1.Text & ""
On Error GoTo er
Combo1.Text = rs.Fields(0)
Combo2.Text = rs.Fields(1)
Text5.Text = rs.Fields(2)
Text6.Text = rs.Fields(3)
Text7.Text = rs.Fields(4)
Text8.Text = rs.Fields(5)
Text9.Text = rs.Fields(6)
Text10.Text = rs.Fields(7)
Text11.Text = rs.Fields(8)
Exit Sub
er:
MsgBox "record not found"
```

End Sub

Private Sub Cmdupdate_Click()

```
s = "update fare_detail set TrainName='" & Combo2.Text & "', Sourceplace='" & Text5.Text &
"', Destination_place='" & Text6.Text & "', First_class='" & Text7.Text & "', three_tier='" &
Text8.Text & "',two_tier =' " & Text9.Text & "', Chair='" & Text10.Text & "',Sleeper='" &
Text11.Text & "' where Train_Number='" & Combo1.Text & """
```

cn.Execute (s)

MsgBox "one record updated"

Combo1.Text = ""

Combo2.Text = ""

Text5.Text = ""

Text6.Text = ""

Text7.Text = ""

Text8.Text = ""

Text9.Text = ""

Text10.Text = ""

Text11.Text = ""

End Sub

Private Sub Command1_Click()

rs.MoveFirst

Combo1.Text = rs.Fields(0)

Combo2.Text = rs.Fields(1)

Text5.Text = rs.Fields(2)

Text6.Text = rs.Fields(3)

Text7.Text = rs.Fields(4)

Text8.Text = rs.Fields(5)

Text9.Text = rs.Fields(6)

Text10.Text = rs.Fields(7)

Text11.Text = rs.Fields(8)

End Sub

Private Sub Command2_Click()

rs.MovePrevious

If (rs.BOF = True) Then

rs.MoveFirst

MsgBox "Beginning of the Record"

End If

rs.MoveFirst

Combo1.Text = rs.Fields(0)

Combo2.Text = rs.Fields(1)

```
Text5.Text = rs.Fields(2)
Text6.Text = rs.Fields(3)
Text7.Text = rs.Fields(4)
Text8.Text = rs.Fields(5)
Text9.Text = rs.Fields(6)
Text10.Text = rs.Fields(7)
Text11.Text = rs.Fields(8)
End Sub
```

```
Private Sub Command3_Click()
rs.MoveNext
If (rs.EOF = True) Then
rs.MoveLast
MsgBox "End of the Record"
End If
Combo1.Text = rs.Fields(0)
Combo2.Text = rs.Fields(1)
Text5.Text = rs.Fields(2)
Text6.Text = rs.Fields(3)
Text7.Text = rs.Fields(4)
Text8.Text = rs.Fields(5)
Text9.Text = rs.Fields(6)
Text10.Text = rs.Fields(7)
Text11.Text = rs.Fields(8)
End Sub
```

```
Private Sub Command4_Click()
rs.MoveLast
Combo1.Text = rs.Fields(0)
Combo2.Text = rs.Fields(1)
Text5.Text = rs.Fields(2)
Text6.Text = rs.Fields(3)
Text7.Text = rs.Fields(4)
Text8.Text = rs.Fields(5)
Text9.Text = rs.Fields(6)
Text10.Text = rs.Fields(7)
Text11.Text = rs.Fields(8)
End Sub
```

```
Private Sub Form_Load()
Set cn = New ADODB.Connection
cn.Open ("Provider=MSDAORA.1;Password=tiger;User ID=scott;Persist Security Info=True")
```

```
Set rs = New ADODB.Recordset
rs.Open "select * from fare_detail", cn, adOpenKeyset, adLockOptimistic
Combo1.AddItem "3049\3050"
Combo1.AddItem "3415\3414"
Combo1.AddItem "3073\3074"
Combo1.AddItem "1067\1068"
Combo1.AddItem "4007\4008"
Combo1.AddItem "4013\4012"
Combo1.AddItem "4015\4016"
Combo1.AddItem "4863\4864"
Combo2.AddItem "Howrah-Amritsar Express"
Combo2.AddItem "Malda-Bhiwani Farakka Express"
Combo2.AddItem "Allahabad-Faizabad Saryu Express"
Combo2.AddItem "Varansi-Lucknow Varuna Express"
Combo2.AddItem "Patna-New Delhi Shramzeevi Express"
Combo2.AddItem "Sultanpur-New Delhi Sadbhavana Express"
Combo2.AddItem "Raxaul-New Delhi Sadbhavana Express"
Combo2.AddItem "Bombay-Faizabad Saket Express"
End Sub
```

```
Private Sub HOME_Click()
Form3.Show
Form10.Hide
End Sub
```

```
Private Sub REPORT_Click()
DataReport2.Show
End Sub
```

TICKET CALCULATION:

```
Dim cn As ADODB.Connection
Dim rs As ADODB.Recordset
Dim s As String
```

```
Private Sub Command2_Click()
Form8.Show
Form4.Hide
End Sub
```

```
Private Sub Command3_Click()
If (Combo6.Text = "") Then
```

```

MsgBox "blank record not possible"
Else
s = "insert into train_cal values('" & Combo6.Text & "','" & Combo1.Text & "','" &
Combo2.Text & "','" & Text3.Text & "','" & Text4.Text & "','" & Combo5.Text & "','" &
Text1.Text & "','" & Text2.Text & "')"
cn.Execute (s)
MsgBox "Tickets amount Calculated "
Combo6.Text = ""
Combo1.Text = ""
Combo2.Text = ""
Text3.Text = ""
Text4.Text = ""
Combo5.Text = ""
Text1.Text = ""
Text2.Text = ""
End If
End Sub

```

```

Private Sub Form_Load()
Set cn = New ADODB.Connection
cn.Open ("Provider=MSDAORA.1;Password=tiger;User ID=scott;Persist Security Info=True")
Set rs = New ADODB.Recordset
rs.Open "select * from train_cal", cn, adOpenKeyset, adLockOptimistic
Combo6.AddItem ("Senior citizen")
Combo6.AddItem ("Military man")
Combo6.AddItem ("Student")
Combo6.AddItem ("Others")
Combo1.AddItem "3049\3050"
Combo1.AddItem "3415\3414"
Combo1.AddItem "3073\3074"
Combo1.AddItem "1067\1068"
Combo1.AddItem "4007\4008"
Combo1.AddItem "4013\4012"
Combo1.AddItem "4015\4016"
Combo1.AddItem "4863\4864"
Combo2.AddItem "Howrah-Amritsar Express"
Combo2.AddItem "Malda-Bhiwani Farakka Express"
Combo2.AddItem "Allahabad-Faizabad Saryu Express"
Combo2.AddItem "Varansi-Lucknow Varuna Express"
Combo2.AddItem "Patna-New Delhi Shramzeevi Express"
Combo2.AddItem "Sultanpur-New Delhi Sadbhavana Express"
Combo2.AddItem "Raxaul-New Delhi Sadbhavana Express"

```

```
Combo2.AddItem "Bombay-Faizabad Saket Express"  
Combo5.AddItem "First class"  
Combo5.AddItem "Two_Tier"  
Combo5.AddItem "Three_Tier"  
End Sub
```

```
Private Sub HOME_Click()  
Form3.Show  
Form4.Hide  
End Sub
```


SCREEN SHOTS:

FORM1:

Form6
HOME REPORT

RESERVATION DETAILS

TRAIN_NUMBER	3049\3050	TRAIN_NAME	Varansi-Lucknow Varuna Express
PASSENGER_NAME	XXX	ADDRESS	CHENNAI
AGE	20	TICKET_NUMBER	1222
SOURCE	VARANASI	DESTINATION	LUCKNOW
NO_OF_TICKET	2	CLASS	First class
AMOUNT	2000	DATE	6-april-2011

Project1
Ticket Reserved
OK

RESERVE **BACK**

FORM 2:

Form10
HOME REPORT

FARE DETAILS

TRAIN NUMBER	3049\3050	FIRST CLASS	2
TRAIN NAME	Varansi-Lucknow Varuna Expr	THREE TIER	0
SOURCE PLACE	Varanasi	TWO TIER	
DESTINATION PLACE	Lucknow	CHAIR	
		SLEEPER	0

Project1
one record added
OK

|<< << >> >>|

ADD **UPDATE** **DELETE** **CLEAR** **SEARCH** **EXIT**

FORM 3:

Project1 - Microsoft Visual Basic [runt]
Form4
HOME REPORT

TICKET CALCULATION

CATEGORY: Student

TRAIN NUMBER: 3049/3050

SOURCE: varanasi

CLASS: First class

TRAIN NAME: []

DESTINATION: []

NO OF TICKETS: []

TOTAL AMOUNT: 2050

ADD EXIT

Project1
Tickets amount Calculated
OK

FORM 4:

DataReport12
Zoom 100%

FARE DETAILS

TRAIN_NO	TRAINNAME	SOURCEPLACE	DESTINATION	FIRST_C	THREE_T	TWO_T	CHAIR	SLEEPER
3049/0050	Varansi-Luckn/Varansi	Lucknow		2	0	0	0	0

Pages: 1/1

start KVDWAKAR (F) E-Ticketing E-Ticketing - Microsof... Project1 - Microsoft V... Form10 DataReport2 2:28 PM