

Document for Internet Connecting Using Huawei EC321 or EC325 on MAC OS X

1. Software Requirement

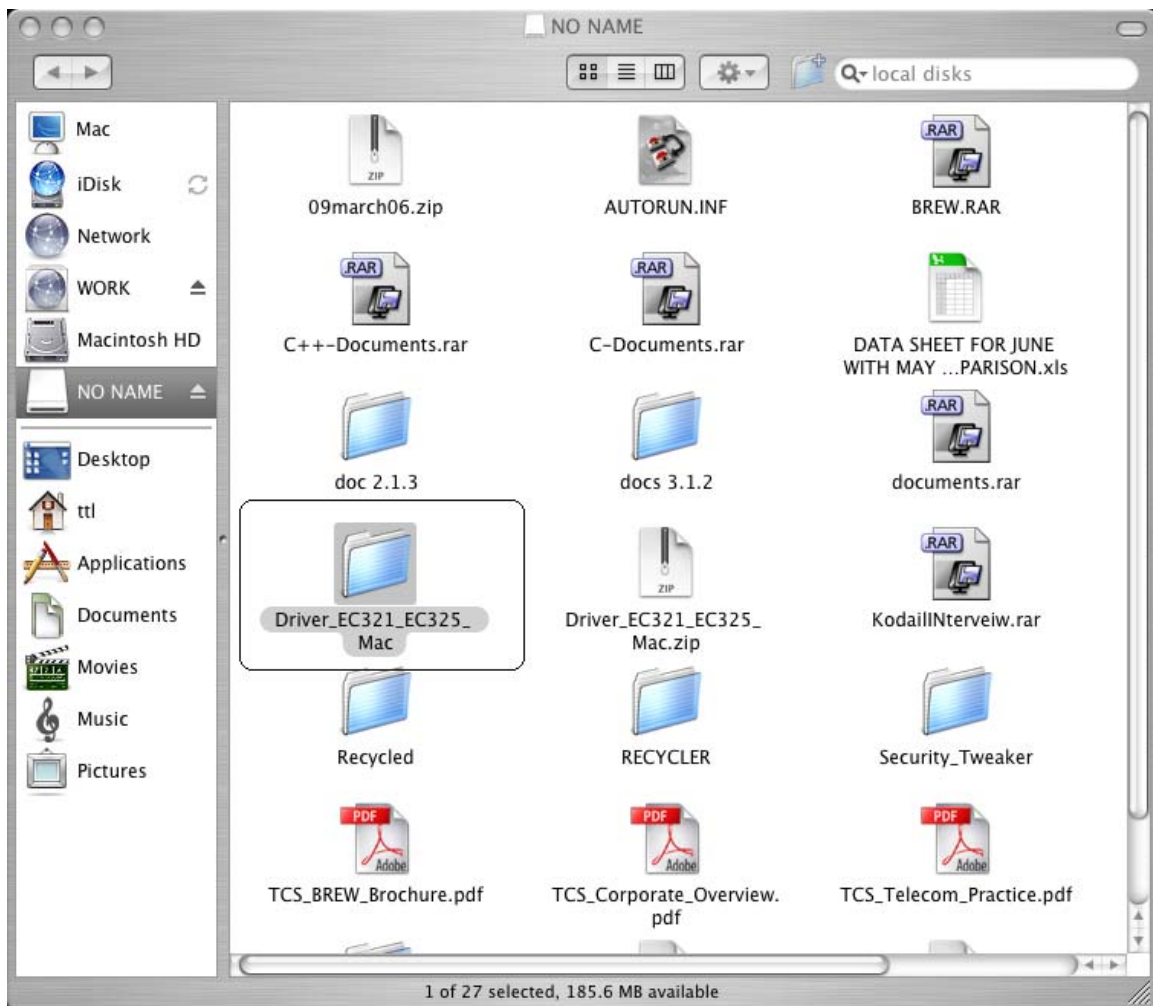
- Mac OS X Version 10.2.8 or later

2. Hardware Requirement

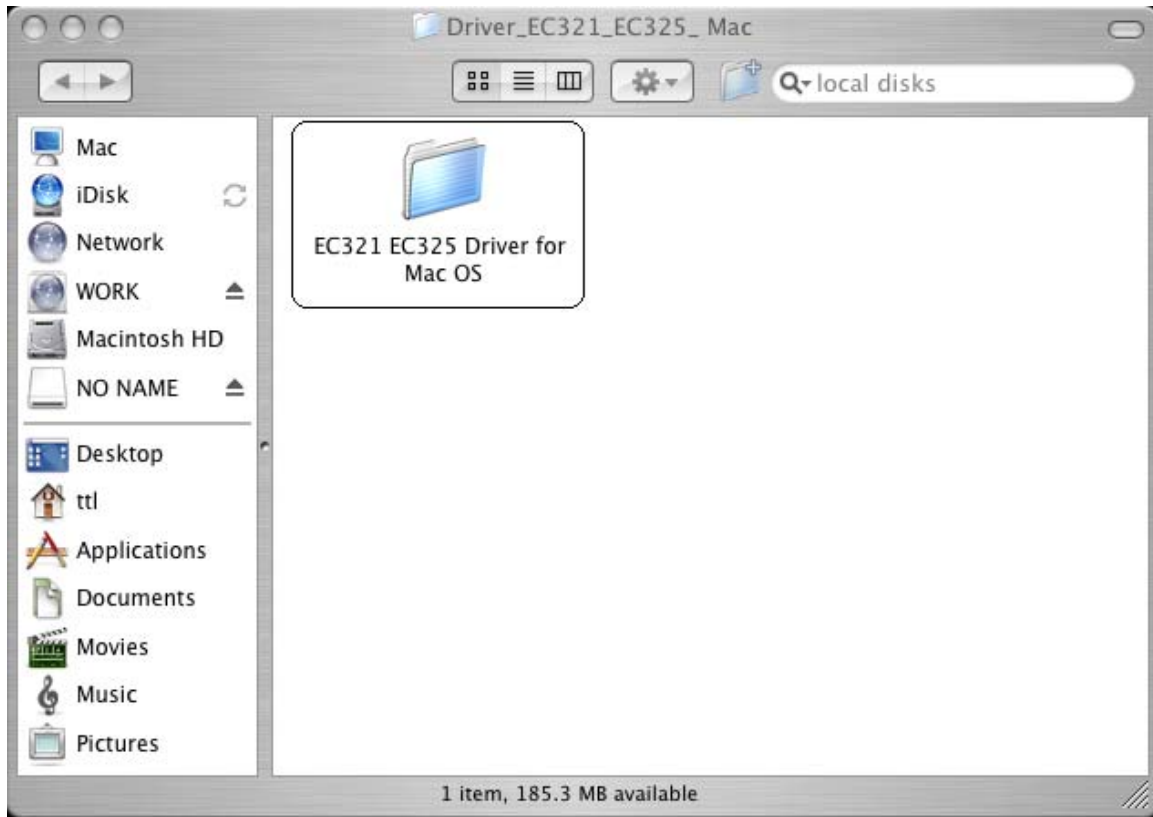
- Huawei EC321 VData card or Huawei EC325 USB Modem
- RUM Card
- Drivers for Huawei device on Mac

Note: Disconnect the Data card or modem before installing the drivers.

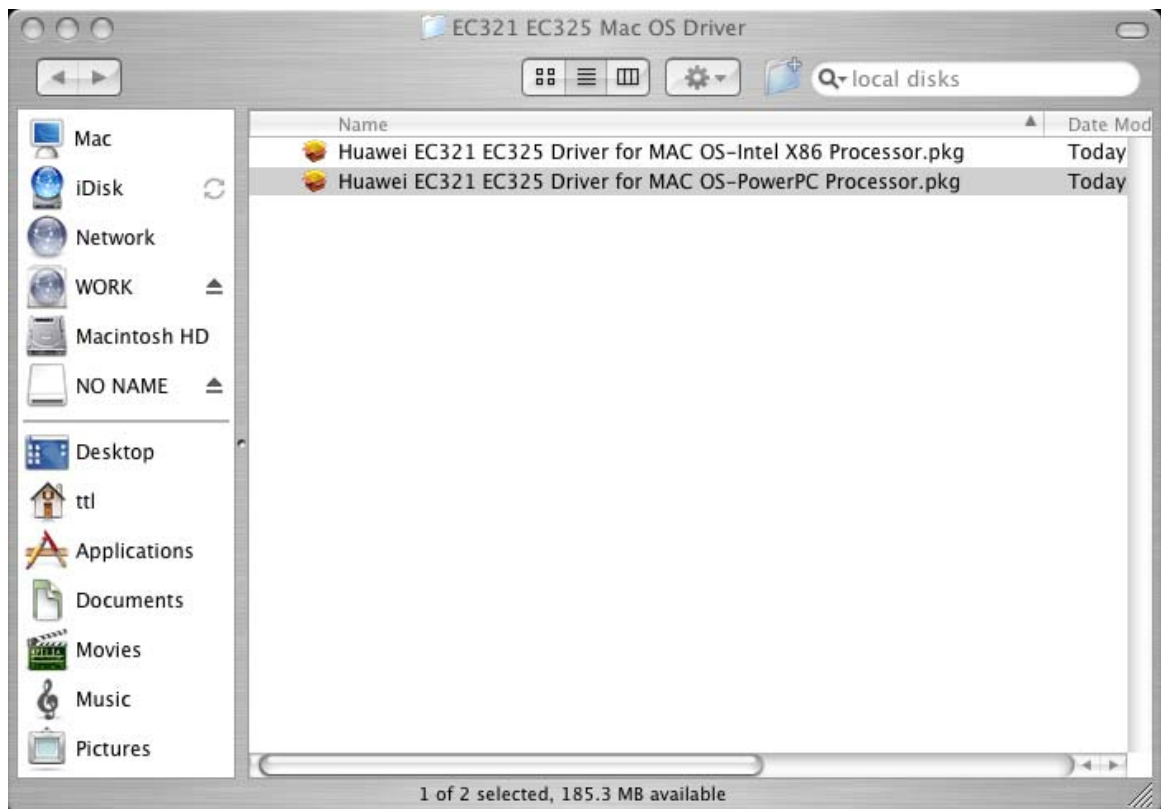
3. Extract the driver Zip file, the below shown folder is created. Double click the folder.



4. Open the folder.



5. Click on the Package file depending on the processor. Select PowerPC package if the installation is done on PowerPC. If the installation is done in Intel PC select Intel X86 package.



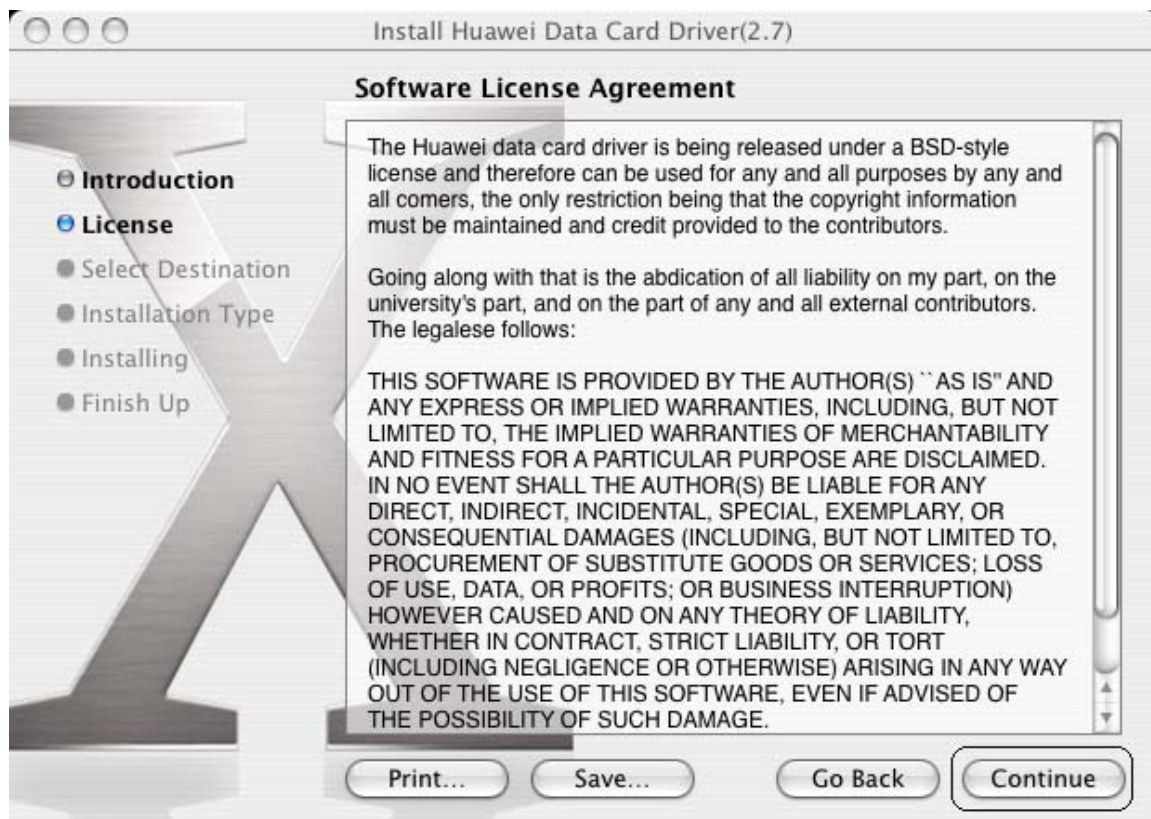
6. Once we double click on Package the following wizard appears. Click on

Continue



7. To accept the License Agreement click on

Continue



8. The following wizard appears Click on  to continue with installation.



9. Select a location to install the driver. Select the **Harddisk** and click on .



10. The following wizard will appear provide Username & Password of admin user or current user.



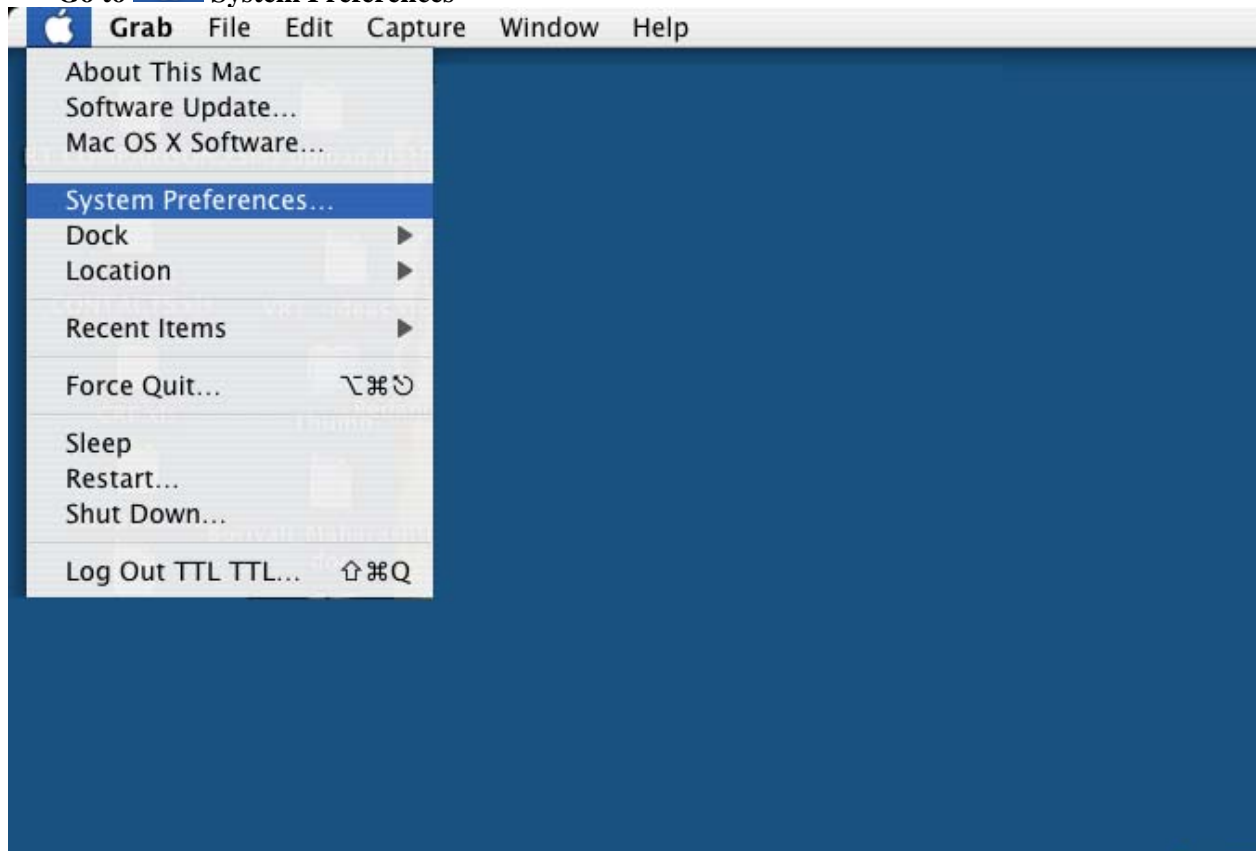
11. The Software installation is successfully completed. Click on

Close



12. The driver installation is successfully completed. Now the dialup connection for the same has to be created. Follow the below steps to create dialup connection.

Go to  System Preferences

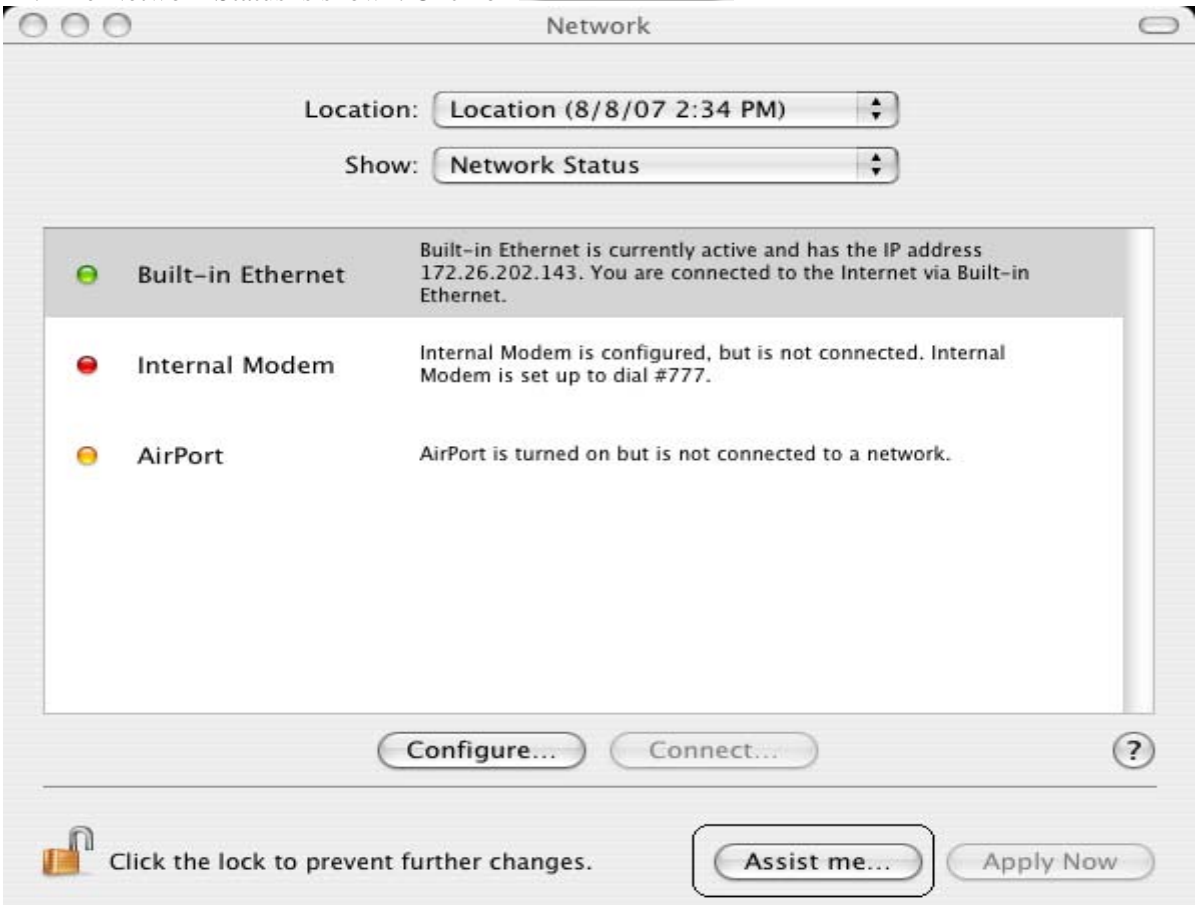


13. Select the **Network** from Internet & Network.



14. The Network Status is shown. Click on

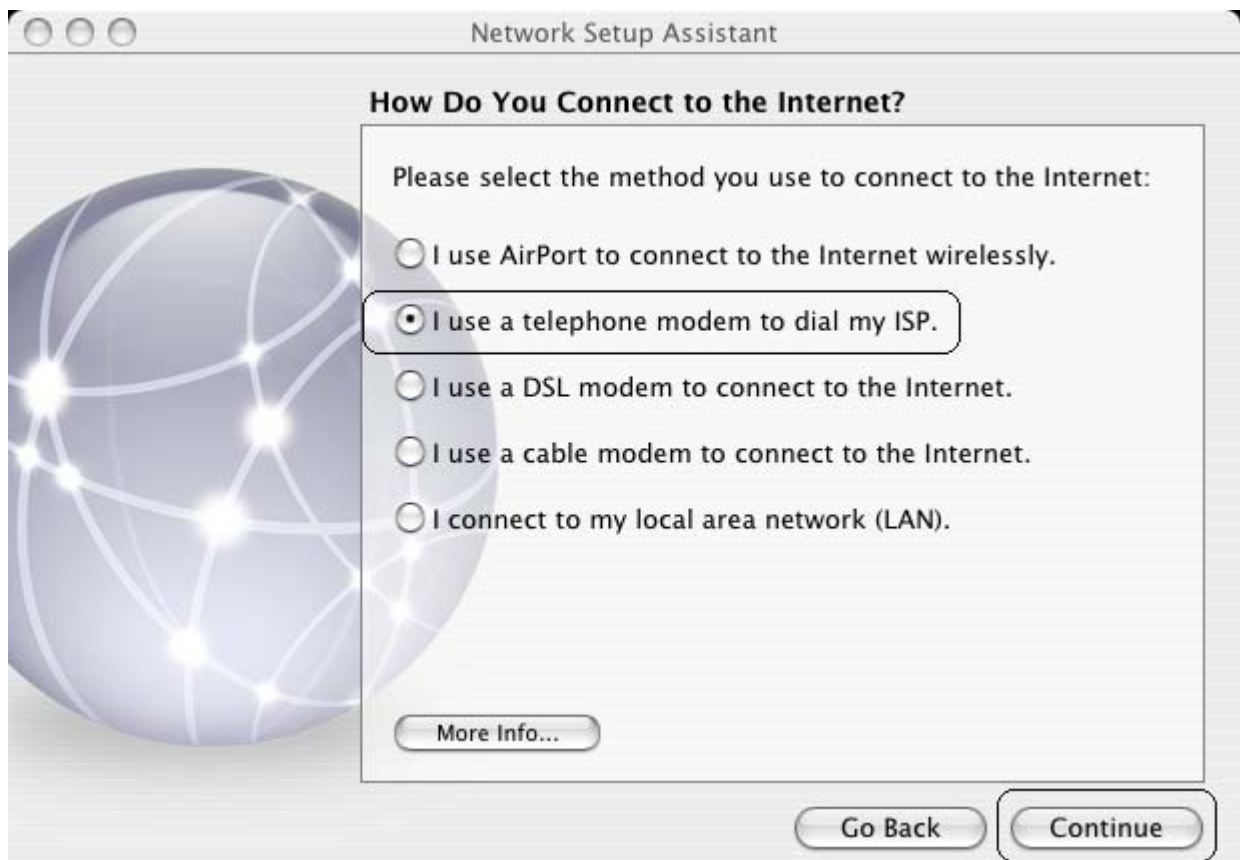
Assist me...



15. Click on **Continue**



16. Select the option I use a telephone modem to dial my ISP and click on **Continue**

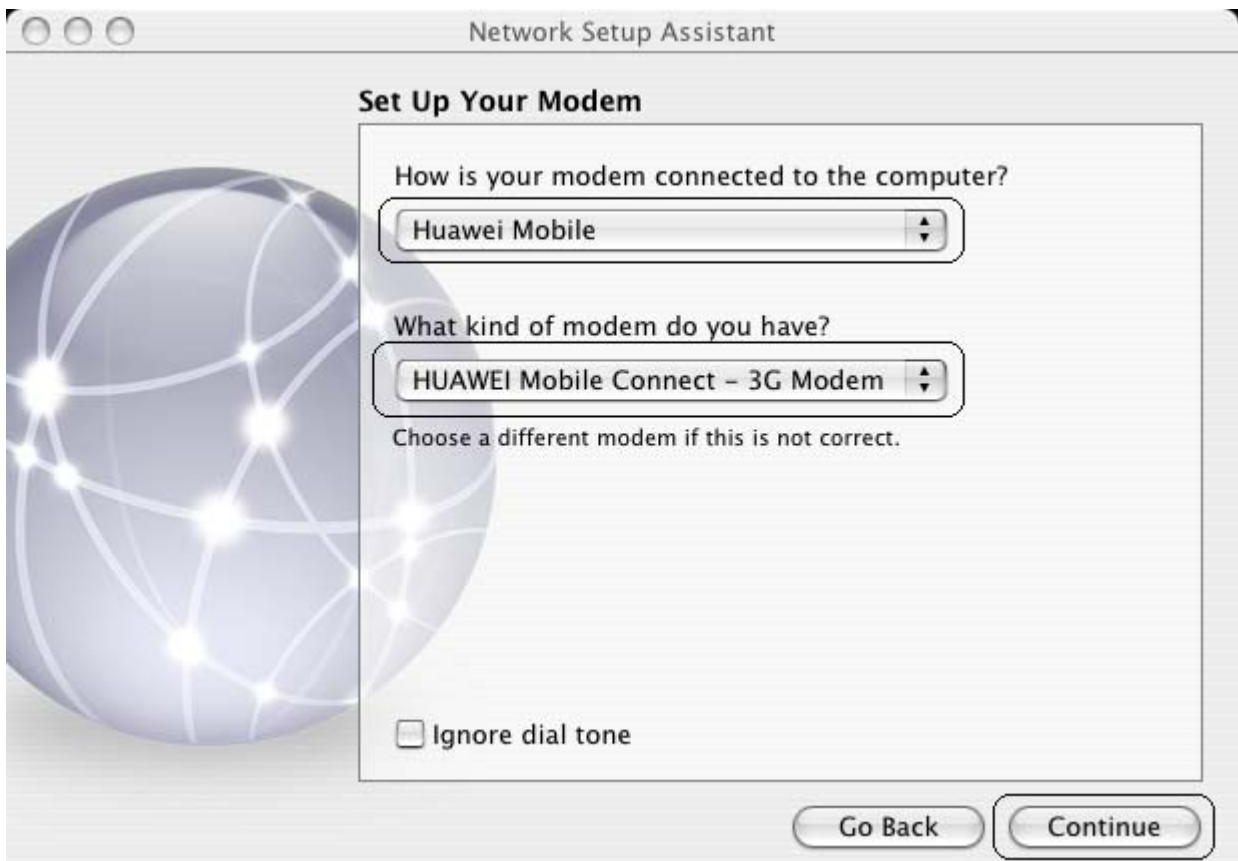


17. Provide the Account Name: **internet** Password: **internet** ISP Phone Number: **#777**



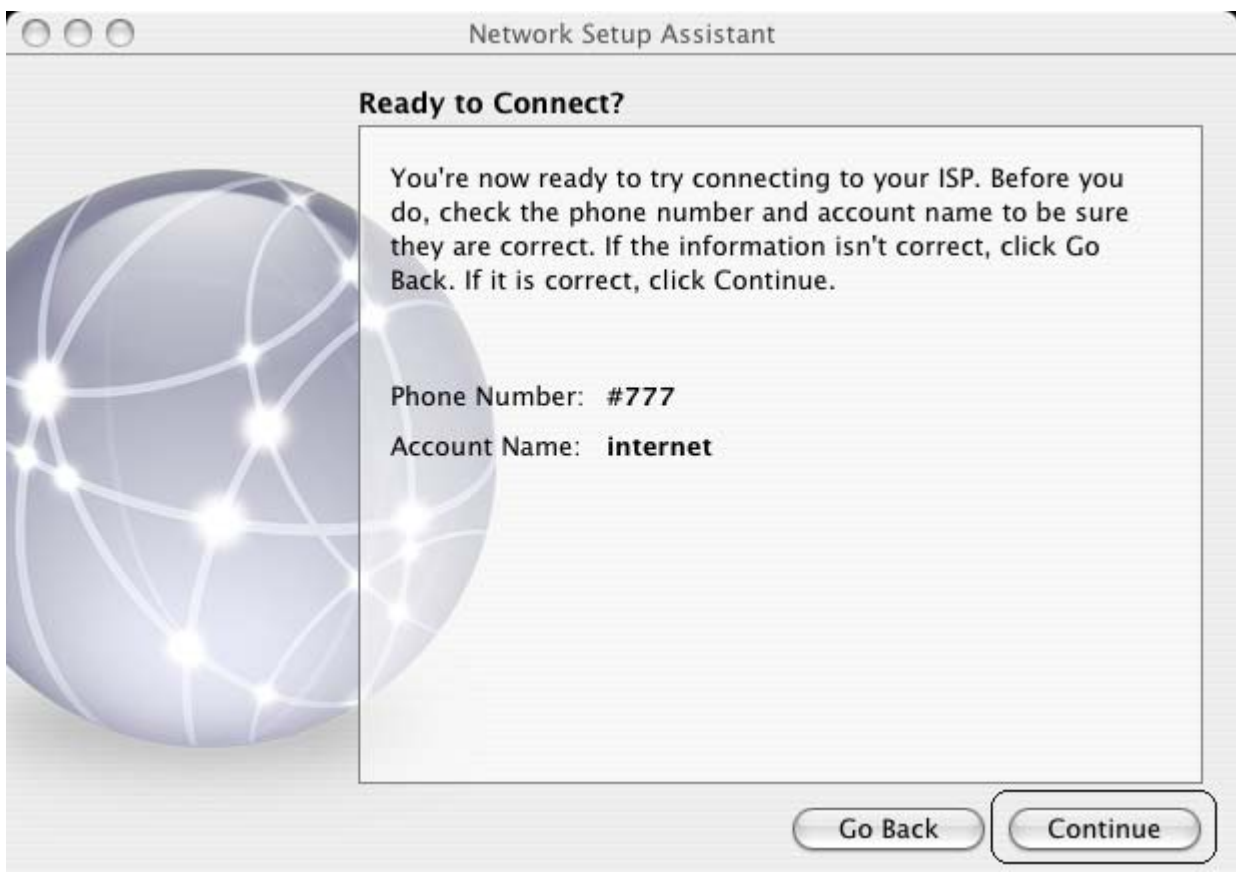
The screenshot shows a window titled "Network Setup Assistant" with the subtitle "Setting Up a Telephone Modem Connection". The window contains a large globe graphic on the left. The main text reads: "You need to enter information before you can connect. If you don't have this information, contact your ISP. If you use AOL, please quit Network Setup Assistant. Use the Network preference to set up your connection." Below this, there are input fields for "Account Name" (filled with "internet"), "Password" (filled with "....."), and "Password (Verify)" (filled with "....."). The "ISP Phone Number" field is filled with "#777" and has a red error icon to its right. There is also a field for "Number to get an outside line:" which is empty. At the bottom, there are radio buttons for "Do you have call waiting?" with "Yes" and "No" options, where "No" is selected. A "More Info..." button is located below the radio buttons. At the bottom right of the window are "Go Back" and "Continue" buttons.

18. Select **Huawei Mobile** and **Huawei Mobile Connect – 3G Modem** as shown and Click **Continue**



The screenshot shows a window titled "Network Setup Assistant" with the subtitle "Set Up Your Modem". The window contains a large globe graphic on the left. The main text asks "How is your modem connected to the computer?" with a dropdown menu showing "Huawei Mobile". Below that, it asks "What kind of modem do you have?" with a dropdown menu showing "HUAWEI Mobile Connect – 3G Modem". A note below the dropdowns says "Choose a different modem if this is not correct." At the bottom left, there is a checkbox labeled "Ignore dial tone" which is currently unchecked. At the bottom right of the window are "Go Back" and "Continue" buttons.

19. The dialup connection is created. Click on **Continue**



20. The device is connected and the status is shown in the Network window.

