

Branding of an Adempiere Installation

These are some changes made by Adaxa that are publicly available for those who think it is useful.

Store logos on the Client Info page

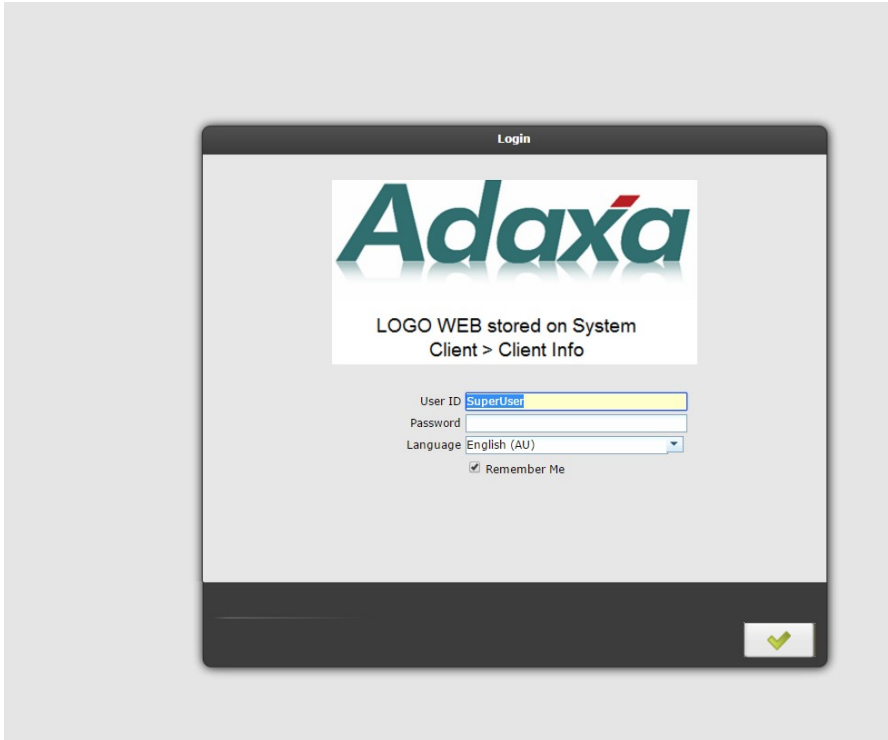
The screenshot shows the 'Client Info' page in the Adempiere application. The page is titled 'Client' and has a sub-tab 'Client Info'. The main content area is divided into several sections:

- Client:** A dropdown menu showing 'GardenWorld'.
- Client Info:** A section with several fields:
 - Discount calculated from Line Amounts
 - Calendar:** A dropdown menu showing 'GardenWorld Calendar'.
 - Primary Accounting Schema:** A dropdown menu showing 'GardenWorld US/A/US Dollar'.
- Defaults:** A section with several fields:
 - UOM for Volume:** A dropdown menu.
 - UOM for Length:** A dropdown menu.
 - Template B.Partner:** A text field showing 'Standard-Standard' with a refresh icon.
 - Product for Freight:** A text field showing 'Standard' with a refresh icon.
 - Days to keep Log:** A text field with a calendar icon.
 - COGS Acct From:** A text field with a calendar icon.
 - Product Expense Acct From:** A text field with a calendar icon.
 - Revenue Acct From:** A text field with a calendar icon.
- Reference:** A section with several dropdown menus:
 - Organisation Tree:** A dropdown menu showing 'GardenWorld Organization'.
 - BPartner Tree:** A dropdown menu showing 'GardenWorld Bus Partner'.
 - Project Tree:** A dropdown menu showing 'GardenWorld Project'.
 - Campaign Tree:** A dropdown menu showing 'GardenWorld Campaign'.
- Logo:** A section with several fields:
 - Logo:** A text field with a preview of the Adaxa logo.
 - Logo Report:** A text field with a preview of the Adaxa logo.
 - Logo Web:** A text field with a preview of the Adaxa logo.
 - Logo Web Header:** A text field with a preview of the Adaxa logo.
 - ZK Hostname:** A text field.

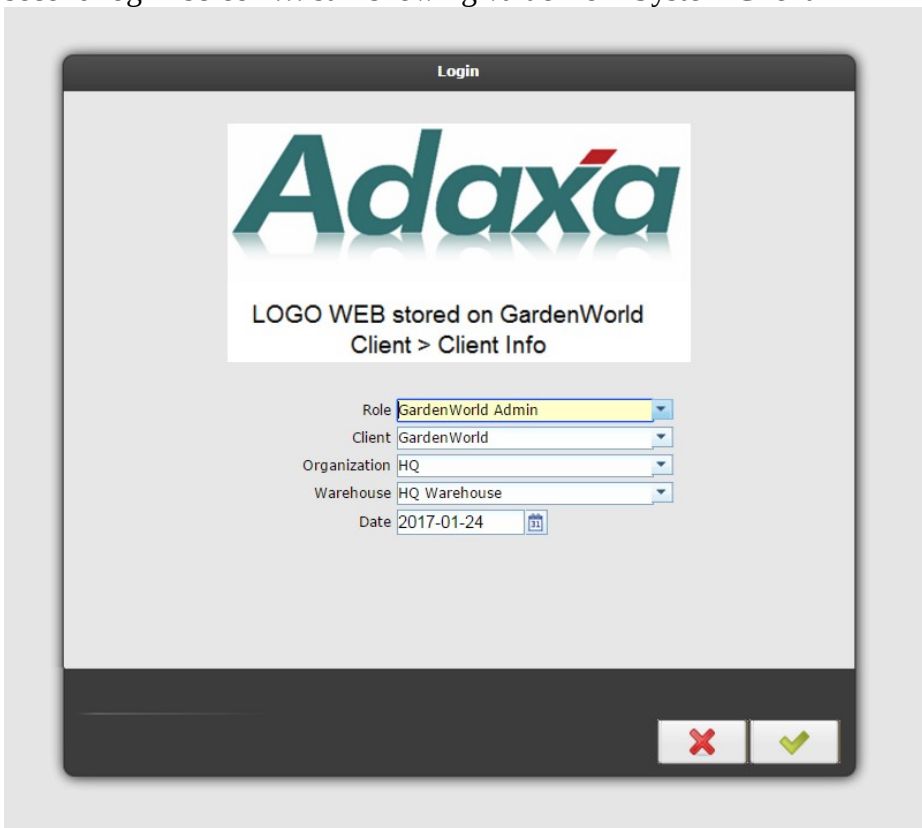
It would be good if all logos could be loaded in 'New Client Create' but only one is presently.

When you log in from start, the system displays the logo stored in “Logo Web” on the Client=System 'Client Info' tab.

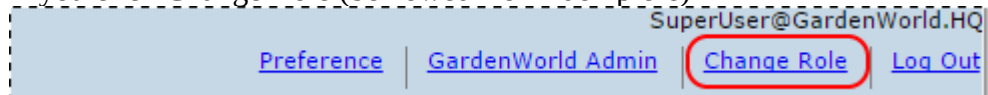
[If you fill in the **ZK Hostname** on “Client Info” field, the system gets its initial login display logo from here rather than use the one on the system record ... I think you put port numbers on end to differentiate clients.]



second log in screen ... still showing value from System Client



If you click Change Role (borrowed from Idempiere)

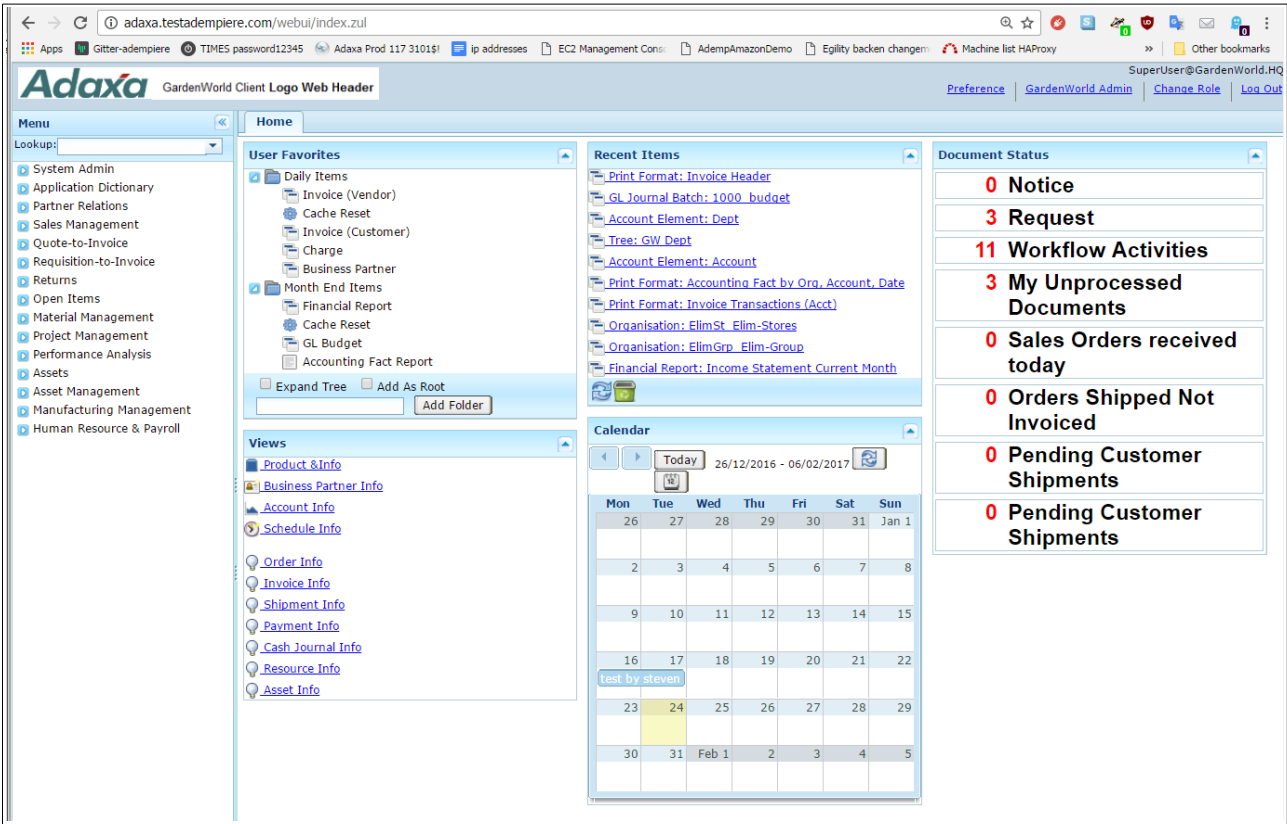
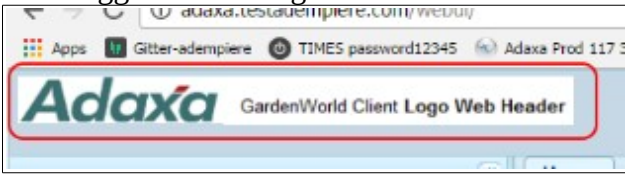


and select GardenWorld it now displays the 'Web Logo' stored on the GardenWorld Client Info record

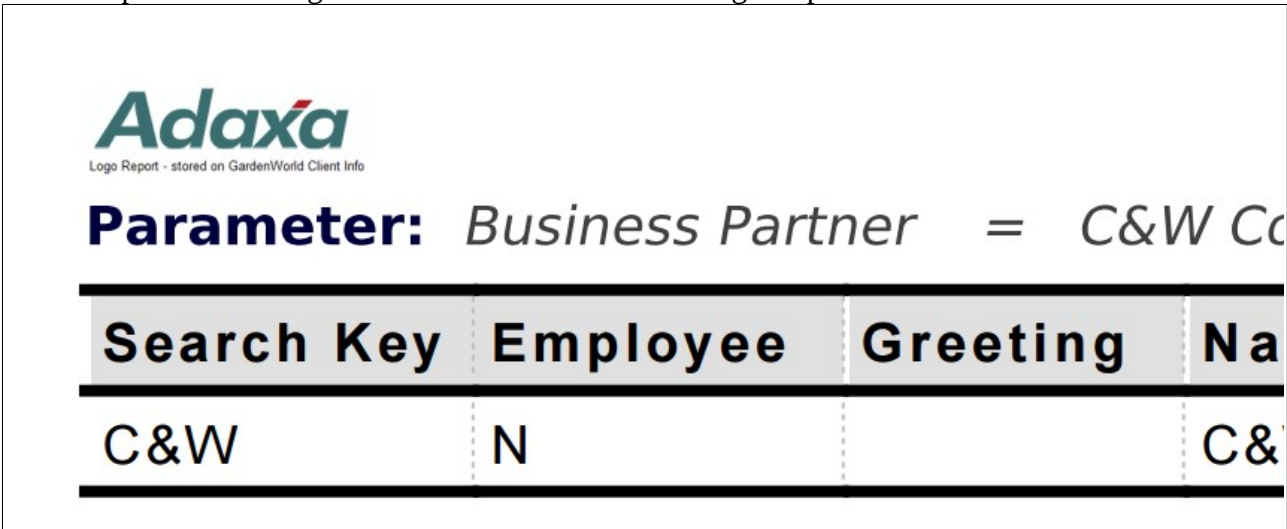


so if you have multiple Clients in one system each time you change client you get to see that clients logo.

Now logged in and Logo Web Header from GW client info is displayed



Run a Report and the logo stored on GW Client Info "Logo Report" is used



Print an Invoice and the "Logo" stored on 'Org Info' is used unless that is null in which case it will look for the equivalent logo on the 'Client Info'

Adaxa

HQ Org>Org Info Logo

2828 SW Corbett Ave
Suite 130
Portland, OR 97201

C&W Construction
Unlimited Projects Corp.
100 Elm St
Stamford, CT 03323

Invoice 200002 - 07/01/2016

Extra data is stored in the 'Org Info' tab and is picked up on the system default Order Print Formats and Invoice Print Formats so the system seems to work “out of the box” without lots of configuration.

For the invoices we need company identifying number, address, phone etc, bank to send money to... and that is all automatically there as soon as you run create client and update the Org Info tab.

The screenshot displays the 'Organisation' software interface, specifically the 'Organization Info' tab. The interface includes a toolbar at the top with various icons for navigation and actions. The main content area is divided into several sections:

- Organization Info:** This section contains the following fields:
 - Client*:** GardenWorld (dropdown menu)
 - Organisation*:** HQ (dropdown menu)
 - Active
 - Address:** 2828 SW Corbett Ave, Suite 130, Por (text input with a search icon)
 - Organisation Type:** (dropdown menu)
 - Warehouse:** HQ Warehouse (dropdown menu)
 - ACN/ABN*:** 12345678 (text input)
 - Supervisor:** GardenAdmin (text input with a dropdown arrow)
 - Calendar:** (dropdown menu)
 - Phone:** 98765432 (text input)
 - Fax:** 876543 (text input)
 - Bank Account:** MoneyBank - 123456789_1234 (dropdown menu)
 - Finished Goods Locator:** (text input with a search icon)
 - Parent Organisation:** (text input)
 - Drop Ship Warehouse:** HQ Transit (text input)
 - Tax ID*:** ? (text input)
 - 2nd Phone:** 88888 (text input)
 - E-mail Address:** (text input)
 - Template Product:** (text input)
- Logo:** A section with a checked checkbox and the label 'Logo'. Below it is a logo for 'Adaxa' with the tagline 'Helping You Grow'.