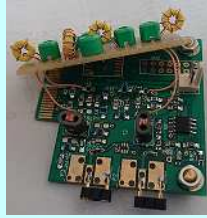


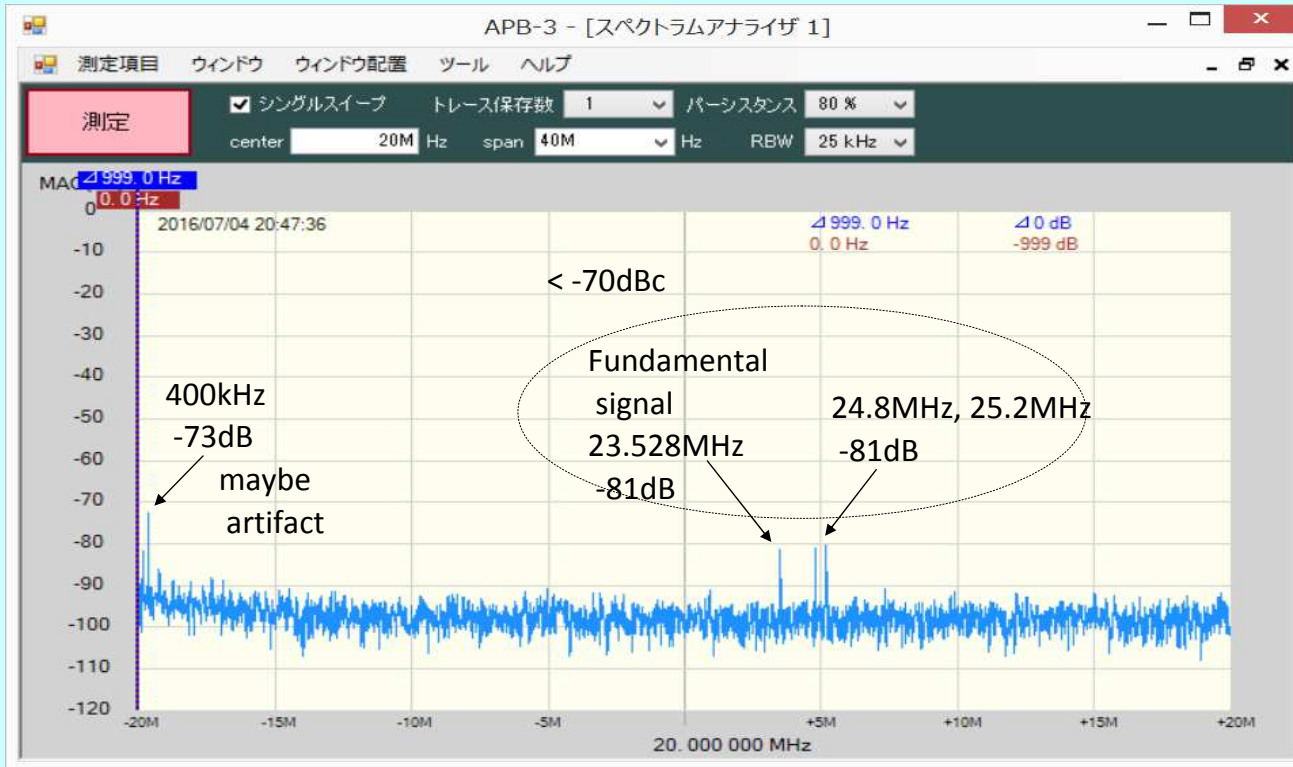
# 6m Spur result

Connection: Frontend output → ATT (MAG of 50.2MHz signal is adjusted to -10dB on SPA) → SPA  
PowerSDR : Drive Level 32(TxPGA[3:0]=9)、Ftx=23.528MHz (target frequency 50.200MHz)、TUNE mode

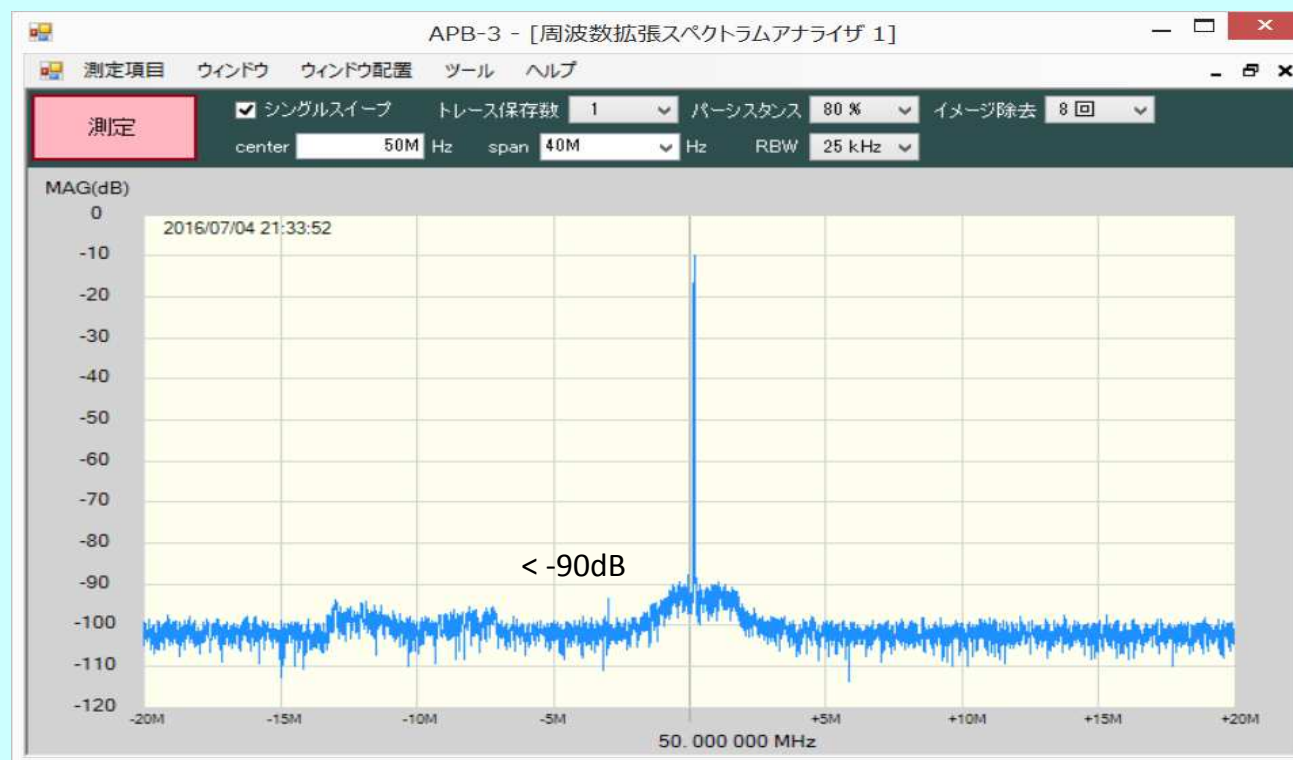
## Frontend v1.42 + 6m balanced filter



1) 0MHz - 40MHz



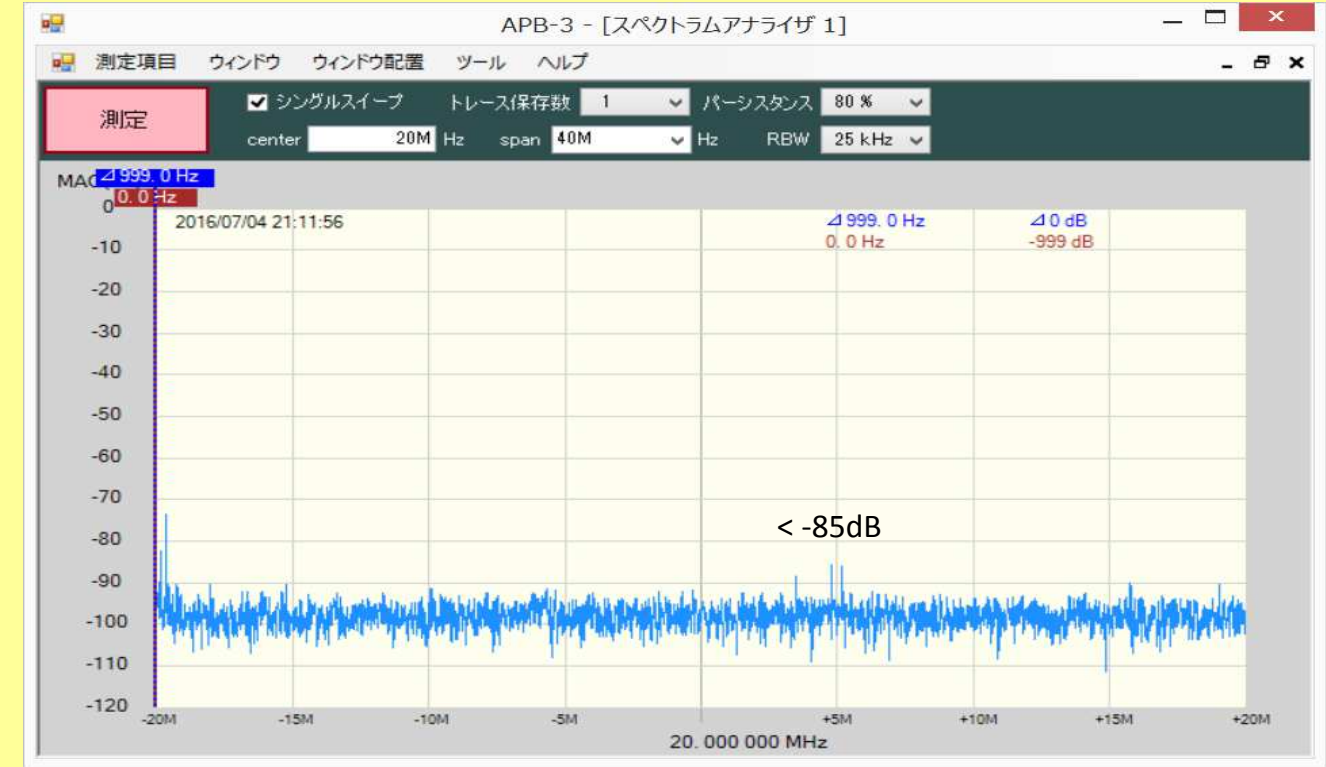
2) 30MHz - 70MHz



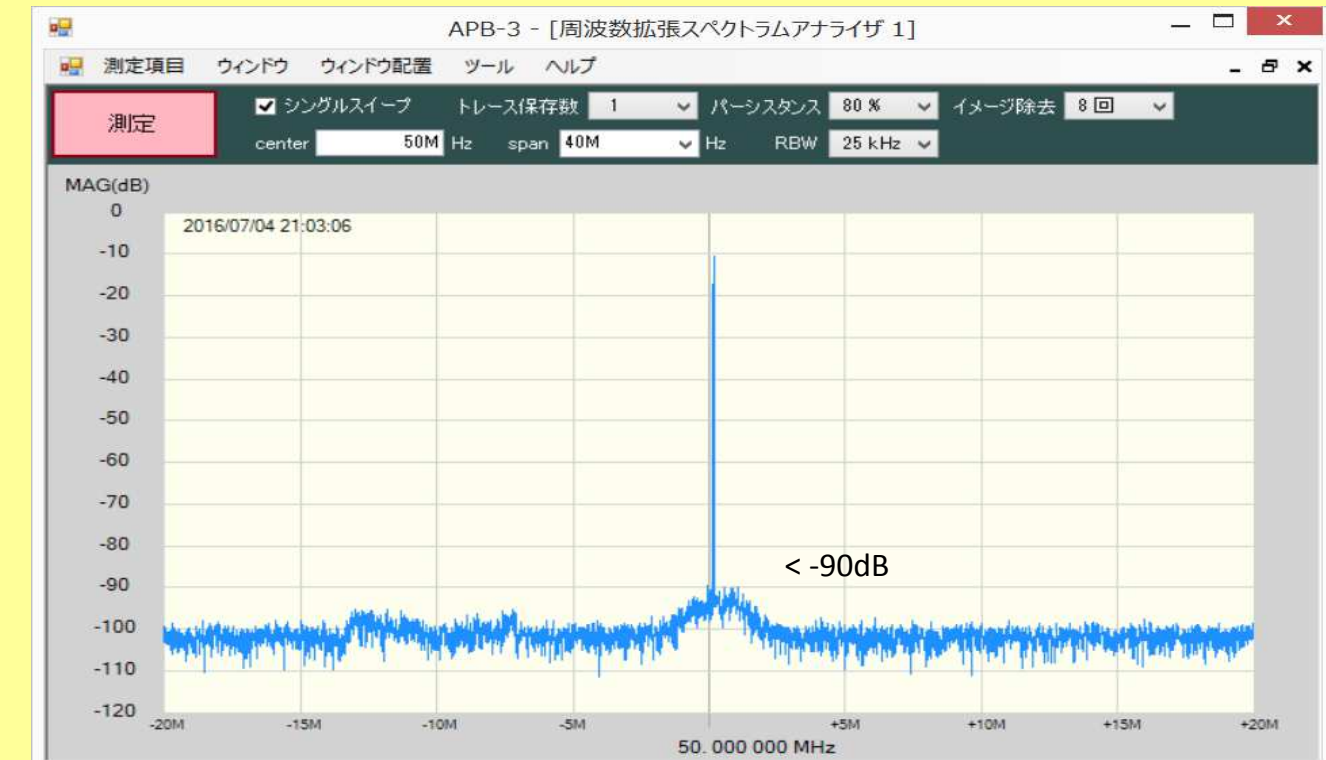
## Test Frontend 6m



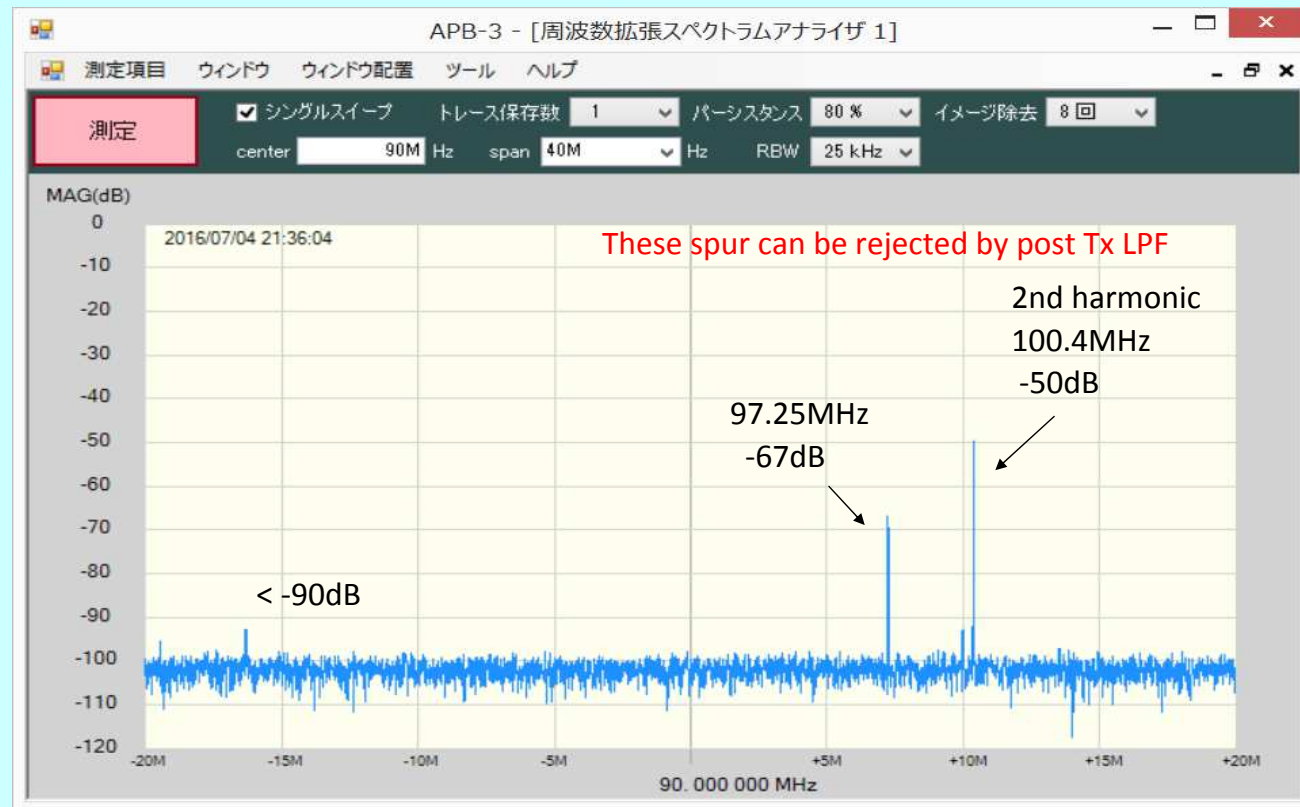
1) 0MHz - 40MHz



2) 30MHz - 70MHz



### 3) 70MHz - 110MHz



### 3) 70MHz - 110MHz

