

GRAZING GROUP PASTURE WALK

THURSDAY, MAY 19TH • 5:00 PM — 8:00 PM

OAK CREEK PASTURES • 1963 155TH ST. OSSIAN, IA

*Sign-in begins at 4:45 pm • FREE event • Look for LSP event signs off Hwy 52
Dinner provided by farmers & LSP feat. Oak Creek Pastures meat with a menu of grass finished beef sloppy joes, homemade baked beans with bacon, chips and bars*



Scott & Amanda Holthaus of Oak Creek Pastures are hosting a pasture walk for area graziers to show cattle grazing on crop-ground planted last fall to diverse winter cover mix (rye, vetch, triticale, winter barley) and results of winter bale grazing on permanent pasture. Discussion around fencing and watering considerations for maximizing grazing days.
See reverse for farmer background.

RSVP by MAY 17TH! To register, visit <https://bit.ly/37GLJVm>
or contact LSP's Alex Romano at 641-220-6000.



GRAZING GROUP PASTURE WALK

THURSDAY, MAY 19TH • 5:00 PM — 8:00 PM

OAK CREEK PASTURES • 1963 155TH ST. OSSIAN, IA

*Sign-in begins at 4:45 pm • FREE event • Look for LSP event signs off Hwy 52
Dinner provided by farmers & LSP feat. Oak Creek Pastures meat with a menu of grass finished beef sloppy joes, homemade baked beans with bacon, chips and bars*



Scott & Amanda Holthaus of Oak Creek Pastures are hosting a pasture walk for area graziers to show cattle grazing on crop-ground planted last fall to diverse winter cover mix (rye, vetch, triticale, winter barley) and results of winter bale grazing on permanent pasture. Discussion around fencing and watering considerations for maximizing grazing days.
See reverse for farmer background.

RSVP by MAY 17TH! To register, visit <https://bit.ly/37GLJVm>
or contact LSP's Alex Romano at 641-220-6000.

Grazing Group Pasture Walk Thursday, May 19th, 5:00PM-8:00PM



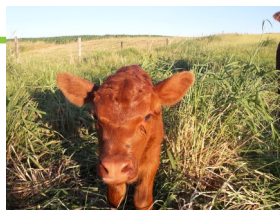
LSP—SOIL BUILDERS' NETWORK



About Oak Creek Pastures:

Scott Holthaus has farmed livestock his whole life. He grew up on the farm near Ossian where the pasture walk takes place. From 2007- 2019 Scott raised beef cows and sheep in the Mabel and Spring Grove, MN area. That farm was sold in 2018, and he then moved backed to Iowa. In Feb. 2021, Scott purchased a herd of grass fed cattle. Today, the Holthaus family raises 100% grass fed & finished beef, non-GMO fed pastured

pork and non-GMO fed pastured broilers and layers. All products are marketed directly to the consumers. Scott & Amanda got interested in regenerative farming in 2019 through their gardening, then had the chance to gain more experience by attending a Soil Health Academy in 2021. **“Our long term goal is to provide regeneratively produced nutrient dense foods for our community!”** They also have a goal to share their knowledge and experiences with other producers to build a better community centered on health and happiness!



180 East Main Street
Lewiston, MN 55952
(507) 523-3366

821 E. 35th St. #200
Minneapolis, MN 55407
(612) 722-6377

Nonprofit Org

US Postage

PAID

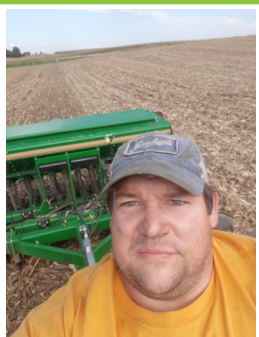
Twin Cities, MN

Permit No. 32580

Grazing Group Pasture Walk Thursday, May 19th, 5:00PM-8:00PM



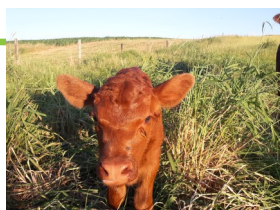
LSP—SOIL BUILDERS' NETWORK



About Oak Creek Pastures:

Scott Holthaus has farmed livestock his whole life. He grew up on the farm near Ossian where the pasture walk takes place. From 2007- 2019 Scott raised beef cows and sheep in the Mabel and Spring Grove, MN area. That farm was sold in 2018, and he then moved backed to Iowa. In Feb. 2021, Scott purchased a herd of grass fed cattle. Today, the Holthaus family raises 100% grass fed & finished beef, non-GMO fed pastured

pork and non-GMO fed pastured broilers and layers. All products are marketed directly to the consumers. Scott & Amanda got interested in regenerative farming in 2019 through their gardening, then had the chance to gain more experience by attending a Soil Health Academy in 2021. **“Our long term goal is to provide regeneratively produced nutrient dense foods for our community!”** They also have a goal to share their knowledge and experiences with other producers to build a better community centered on health and happiness!



180 East Main Street
Lewiston, MN 55952
(507) 523-3366

821 E. 35th St. #200
Minneapolis, MN 55407
(612) 722-6377

Nonprofit Org

US Postage

PAID

Twin Cities, MN

Permit No. 32580