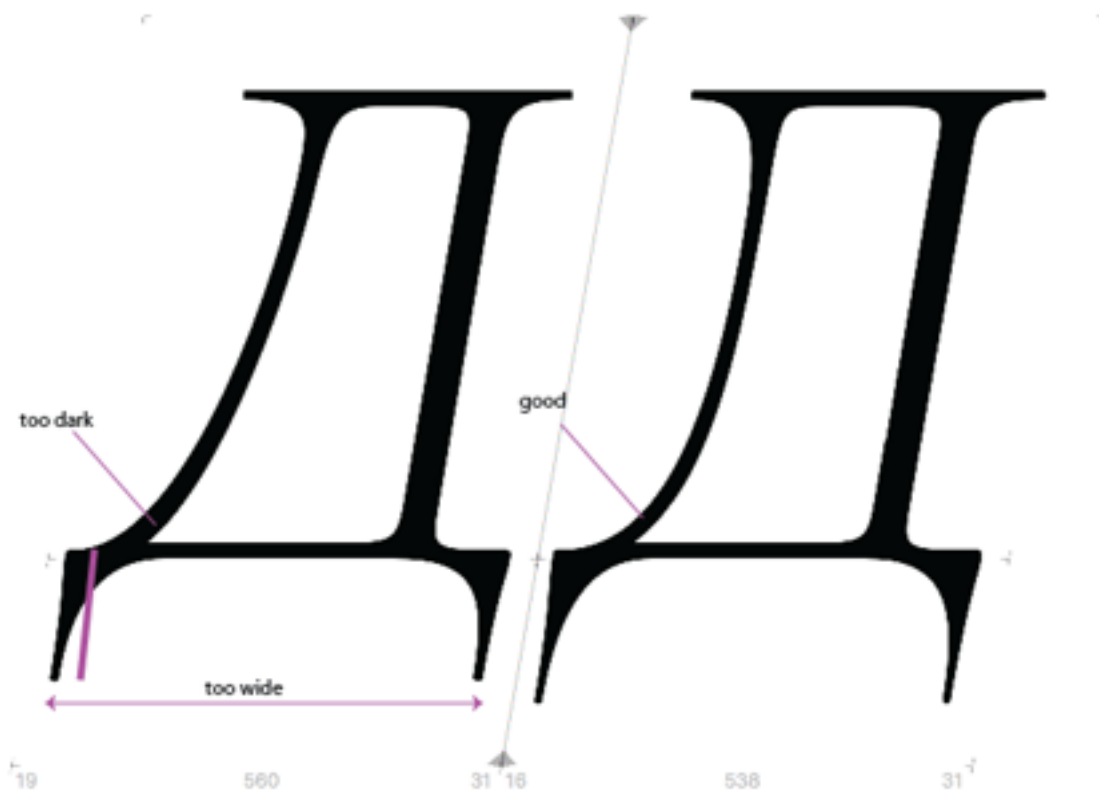


Д — base is too wide. Left should be brought in. Image on the right (on of the layers) has correct base proportions and good sloped stem thickness.



м is better, but still too narrow. plan the right stem to increase width.



6i have already outlines this in Roman. The pennant angle should be less steep, and is too long. Use guideline as a reference for correct angle.



Please do NOT experiment, and make new inventions in Extended Cyrillic. Most of these glyphs were invented by non-type-designer linguists and have no true italic forms. The only acceptable and recognisable form for r-based glyphs would be this:



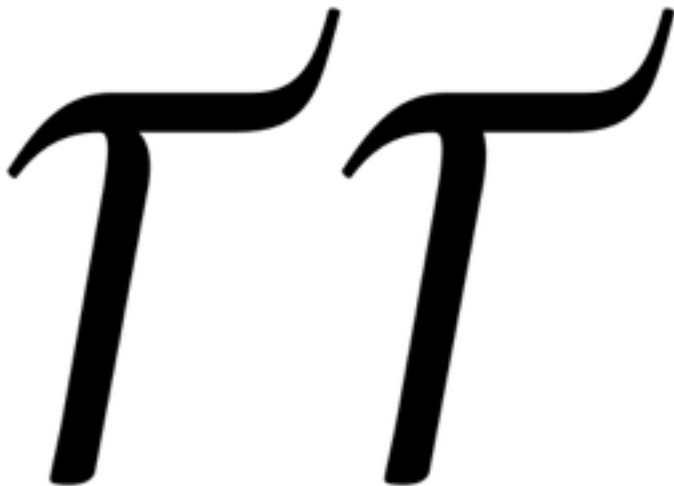
κ — reference for a true italic form

If you wish to keep a slanted κ, adjust the angle of lower limb as in the image



ж — see 'corrected' layer

г — this form looks good. Only concern is the thin instroke — this form should not be divisible into two. See corrected layer (right image)



д (0434)— issue not fixed. Close in aperture, and angle.

Reference:

