

Not Rated

CMP : INR182

**Sunesh Khanna**

+91 22 4031 3437  
sunesh.khanna@antiquelimited.com

**Alok Kapadia**

+91 22 4031 3442  
alok.kapadia@antiquelimited.com

**Market data**

Sector	:	FINANCE
Market Cap (INRbn)	:	67
Market Cap (USDbn)	:	1
O/S Shares	:	372
Free Float (m)	:	61
52-wk HI/LO (INR)	:	218/144
Avg Daily Vol ('000)	:	548
Bloomberg	:	MUTH IN

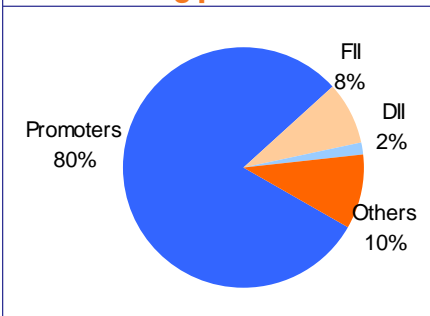
Source: Bloomberg

**Returns (%)**

	<b>1 m</b>	<b>3 m</b>	<b>6 m</b>
Absolute	16	3	(6)
Relative	3	4	(0)

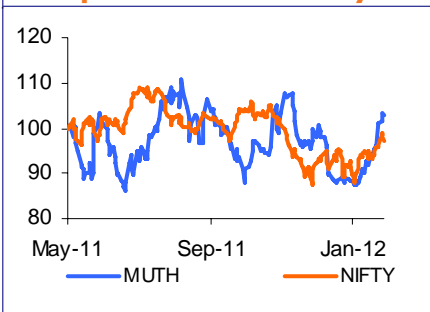
Source: Bloomberg

**Shareholding pattern**



Source: BSE

**Price performance vs Nifty**



Source: Bloomberg

**3QFY12 RESULTS REVIEW**

# Muthoot Finance Limited

## Business momentum strong; regulations remain an overhang

### Results highlights

Muthoot Finance Ltd. (Muthoot) for the quarter reported a PAT of INR2.5bn (+61% YoY and +17% QoQ) and the same was above street expectations. This was on the back of strong growth in net interest income (aided by 66% loan growth) and lower operating expenses. However, despite yield on assets being stable, NIMs exhibited a 60bps QoQ decline because of high cost borrowings during the quarter. Overall, operating performance was strong, but sharp decline in gold prices and adverse regulations pose challenges to growth as well as earnings.

### Strong loan growth momentum continues

Loan growth continues to remain buoyant and Muthoot reported loan book (including loans sold down) of INR222bn, up 66% YoY and 9.3% QoQ. During the quarter, it garnered incremental lending of INR19bn (INR29bn in 2QFY12, translating into a YTD loan growth of 44%. However, loan growth is expected to moderate due to high base effect. Additionally, the company in face of volatile gold prices has enhanced risk management metrics and have reduced its LTV to 68%, to tackle the same.

### Strong NII growth; NIMs decline on high borrowing cost

NII registered a strong growth of 64% YoY (7% QoQ) despite a spike up in interest expenses (+126% YoY; +16% QoQ). NIMs stood at 10.81% in 3QFY12 as compared to 11.4% in 2QFY12 and 11.2% in 2QFY11. The compression in NIMs were because of sharp jump in borrowing costs during the quarter. Muthoot had raised lending rates in 3QFY12 to offset sharp rise in borrowings costs. The removal of agriculture priority-sector status for gold-loan NBFCs has raised concerns on financial flexibility of gold-loan NBFCs. Muthoot has not faced any significant pressure as yet. However, we believe that the company will find it challenging to sell down loans if the proposed revised draft securitization guidelines are implemented. The regulator has also proposed to ban loan sell-down for assets that have bullet repayment and increase minimum holding period for loans sold down by NBFCs to banks.

### Valuation

The stock is trading at a valuation of 1.7x FY13e P/B and 6.2x P/E.

### Quarterly financials

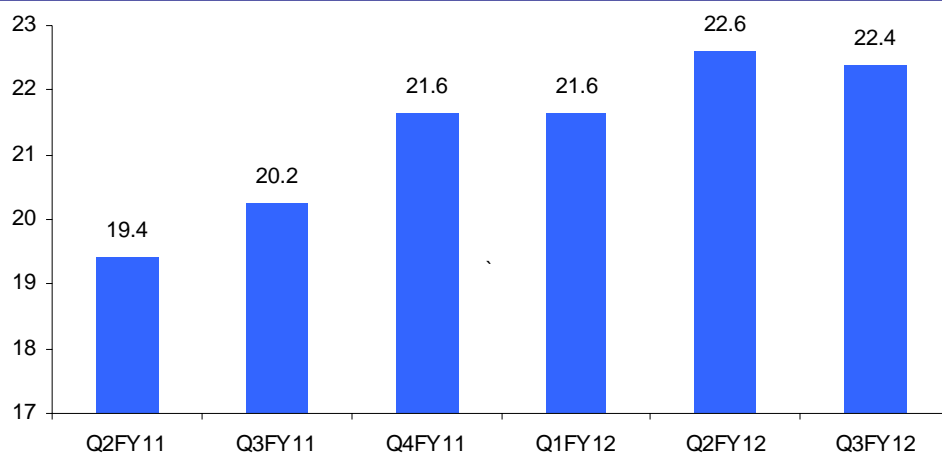
	3QFY12	2QFY12	3QFY11	YoY (%)	QoQ (%)
Interest income	12,261	10,984	6,412	91	12
Interest expenses	6,341	5,452	2,805	126	16
Net interest income	5,920	5,532	3,606	64	7
Operating expenses	1,087	1,477	654	66	-26
Employee expenses	1,135	937	630	80	21
PBT	3,745	3,183	2,369	58	18
Tax	1,235	1,027	768	61	20
PAT	2,509	2,156	1,556	61	16

Source: Company, Antique

### Stable asset quality and improvement in cost ratios

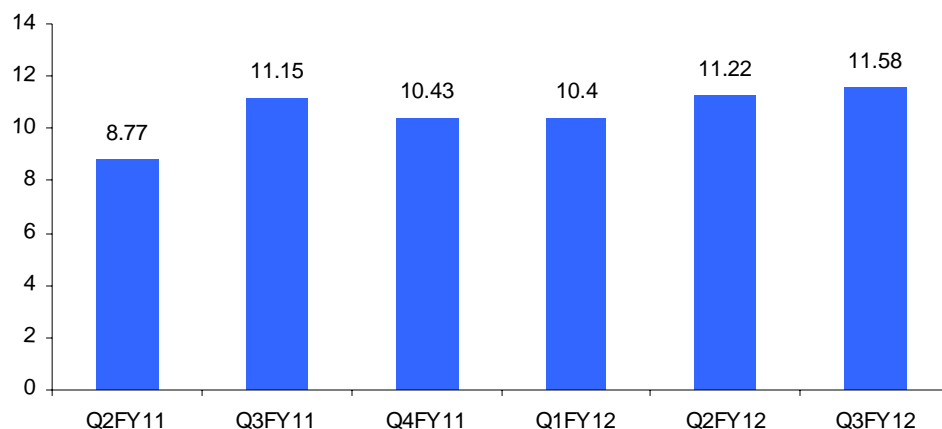
Gross NPLs stood at 0.57% vs. 0.59% reported during 2QFY12; however the management highlighted that NPLs are technical in nature and they recover the capital once the coverage asset (Gold) is auctioned. The losses in case of suspect/inferior quality of assets has to be written-off (the write off for the quarter stood at INR19m and INR45m for 9m). Operating expenses ratio decreased to 4.3% of average assets from 4.72% in 2QFY12. The company has set up 150 branches in 3QFY12 (and will end up adding 900 branches during FY12). Reduction in expenses has been because of decline in seasonal expenses like advertising and issue related expenses; however management has guided the cost ratios to remain at same levels and will not see any major reduction from current levels. As of December 2011, capital adequacy was 18.33%, and tier 1 stood at 13.4%. Hence, if the proposed guideline of 12% tier 1 is implemented, the company may have to raise capital.

### Stable yields on assets (%)



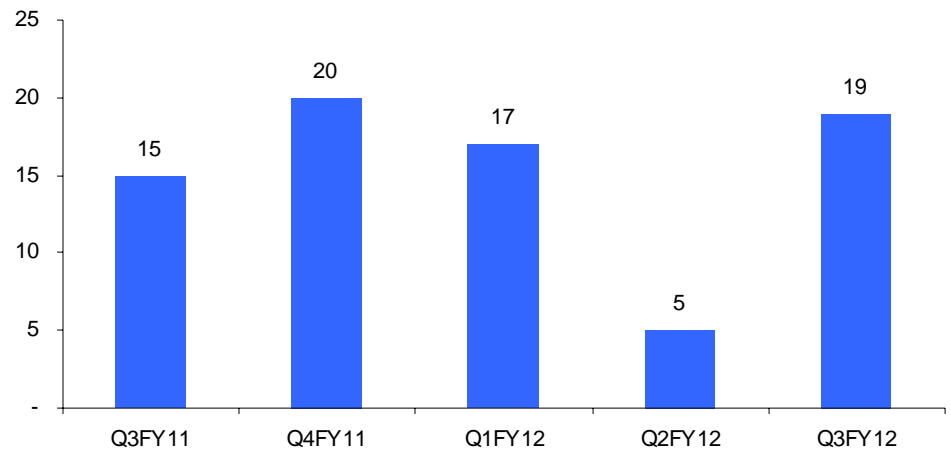
Source: Company, Antiqua

### Borrowing cost increased during the quarter (%)



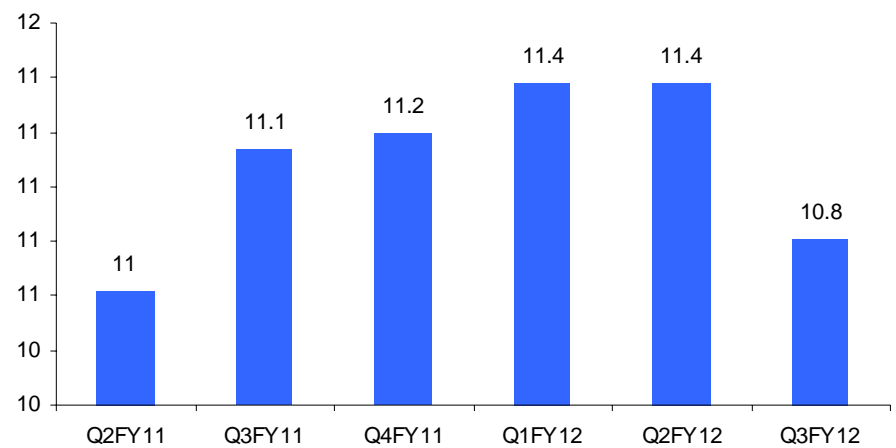
Source: Company, Antiqua

### Bad debts written off (%)



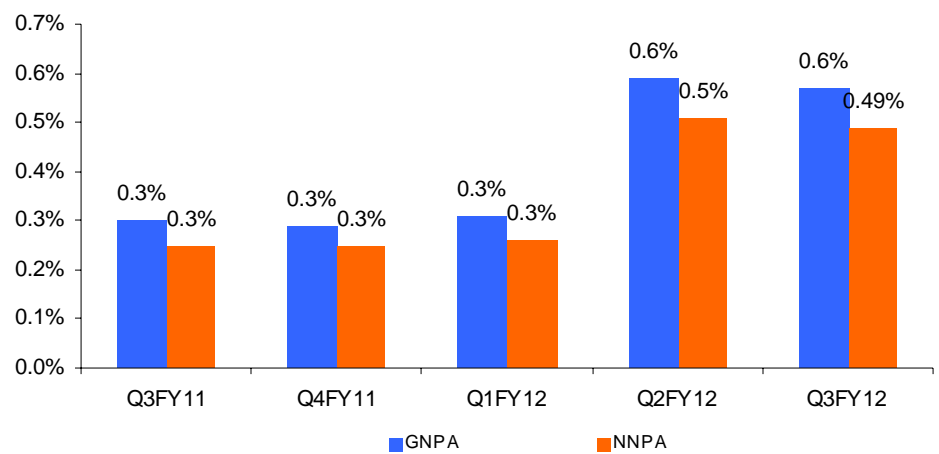
Source: Company, Antique

### NIMs decline because of increase in borrowing costs (%)



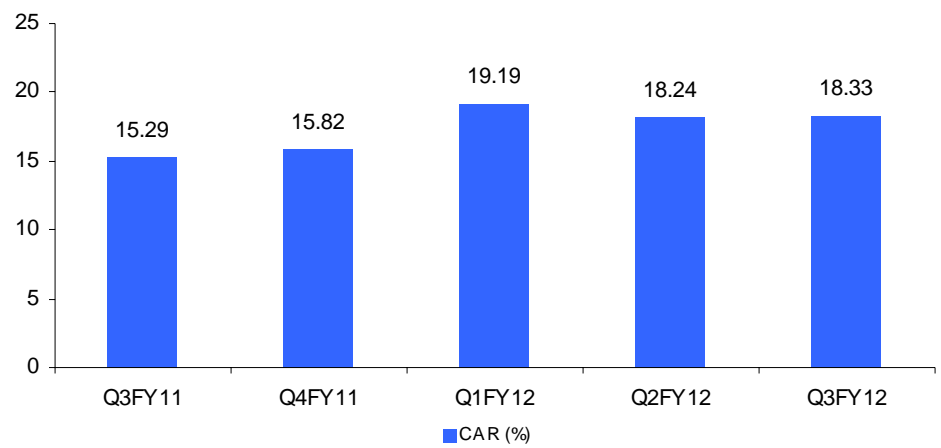
Source: Company, Antique

### Stable asset quality



Source: Company, Antique

### Comfortable capital position



Source: Company, Antique

## Important Disclaimer:

This report is prepared and published on behalf of the research team of Antique Stock Broking Limited (ASBL). ASBL, its holding company and associate companies are a full service, integrated investment banking, investment advisory and brokerage group. Our research analysts and sales persons provide important inputs for our investment banking and allied activities. We have exercised due diligence in checking the correctness and authenticity of the information contained herein, so far as it relates to current and historical information, but do not guarantee its accuracy or completeness. The opinions expressed are our current opinions as of the date appearing in the material and may be subject to change from time to time without any notice. ASBL or any persons connected with it do not solicit any action based on this report and do not accept any liability arising from the use of this document. The recipients of this material should rely on their own judgment and take their own professional advice before acting on this information. The research reports are for private circulation and are not to be construed as, an offer to sell or solicitation of an offer to buy any securities. Unless otherwise noted, all research reports provide information of a general nature and do not address the circumstances of any particular investor. The distribution of this document in certain jurisdictions may be restricted by law, and persons in whose possession this document comes, should inform themselves about and observe, any such restrictions. ASBL its holding company and associate companies or any of its connected persons including its directors or employees shall not be in any way responsible for any loss or damage that may arise to any person from any inadvertent error in the information contained, views and opinions expressed in this publication. ASBL its holding company and associate companies, officers, directors, and employees may: (a) from time to time, have long or short positions in, and buy or sell the securities thereof, of company(ies) mentioned herein or (b) be engaged in any other transaction involving such securities and earn brokerage or other compensation or act as advisor or lender/borrower to such company(ies) or have other potential conflict of interest with respect to any recommendation and related information and opinions. ASBL, its holding company and associate companies, directors, officers or employees may, from time to time, deal in the securities mentioned herein, as principal or agent. ASBL its holding company and associate companies may have acted as an Investment Advisor or Merchant Banker for some of the companies (or its connected persons) mentioned in this report. The research reports and all the information opinions and conclusions contained in them are proprietary information of ASBL and the same may not be reproduced or distributed in whole or in part without express consent of ASBL. The analyst for this report certifies that all of the views expressed in this report accurately reflect his or her personal views about the subject company or companies and its or their securities, and no part of his or her compensation was, is or will be, directly or indirectly related to specific recommendations or views expressed in this report.

---

Analyst ownership in stock

No

---



## Antique Stock Broking Limited

Nirmal, 2nd Floor, Nariman Point, Mumbai 400 021.  
Tel. : +91 22 4031 3444 • Fax : +91 22 4031 3445  
[www.antiquelimited.com](http://www.antiquelimited.com)