

WEEKLY | TECHNICAL



OUR REPORTS

Fundamental

Company Report
Sector Report
Theme Based Report

Daily & Weekly

Fundamental Market Update
Technical Market Update
Derivative Market Update

Fortnightly

Banking Sector Report
Currency Report

Monthly

India Strategy Report
IIP Report
Auto Sector Update
Cement Sector Update
Metal Sector Update
Telecom Sector Update
Insurance and Mutual Fund Report
Inflation Report
Exports-Imports Report

Quarterly

India and Global Strategy Report
India Economy Report

Others

Event Based Report
RBI Monetary Review Report
Annual Budget Review Report

May 26, 2012

Vinit Pagaria, ACA, FRM
Ranajit Kumar Saha

E-mail: vpagaria@microsec.in
E-mail: rksaha@microsec.in

Weekly Report

NIFTY WEEKLY CHART



Nifty(4920.40)

Resistance levels

Resistance 1: 4960

Resistance 2: 5040

Resistance 3: 5130

Support levels

Support 1: 4880

Support 2: 4790

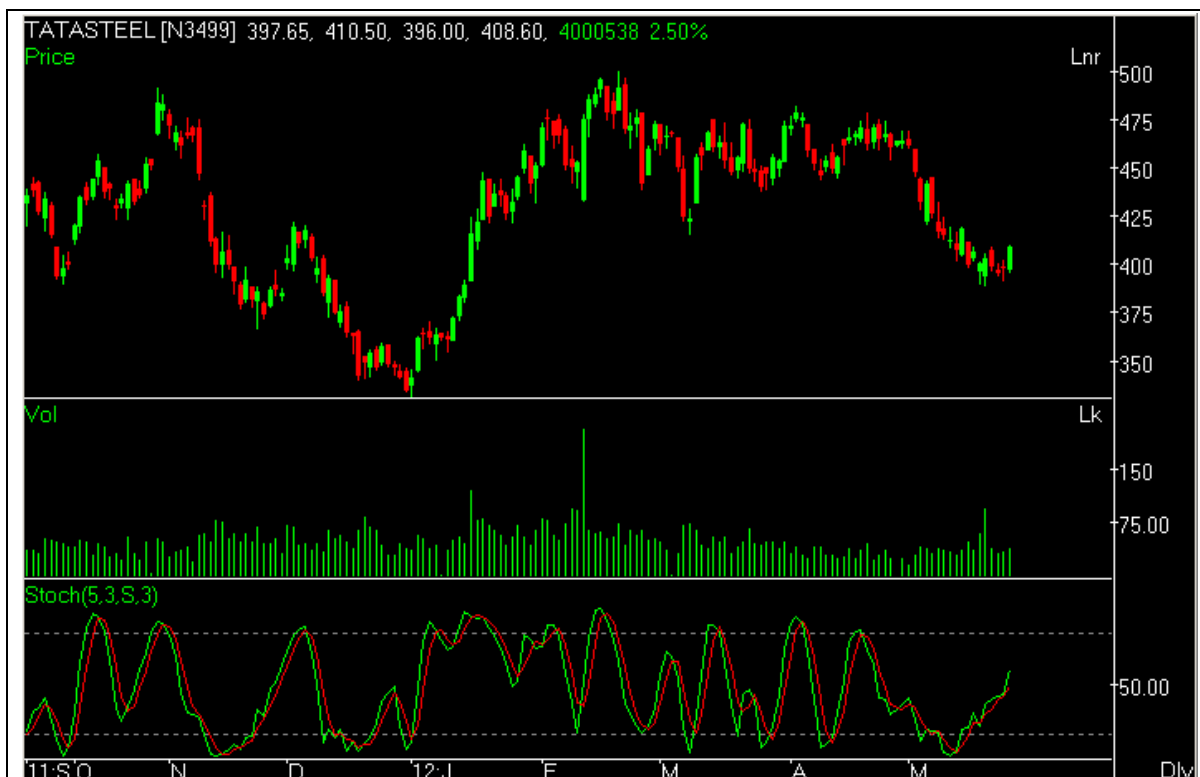
Support 3: 4720

NIFTY LIKELY TO MOVE IN THE RANGE OF 5040 AND 4770.

Last week Nifty started to trade with a green session and then it fell to make a weekly low of 4803.95 on Wednesday. There after a pull back rally was seen on Thursday. At last, Nifty ended the week with a marginal gain of 0.59%. On the sectoral front, some buying interest was witnessed in Capital goods, Oil & gas, Banking, Realty and PSU stock. However selling was seen in FMCG and Consumer durable stocks. Now Nifty is expected to move in the band of 5040 and 4770 in the short term.

PICK OF THE WEEK

TATASTEEL (CMP: RS 408.60)



ACCUMULATION LEVEL	TARGET 1	TARGET 2	STOP LOSS	TIME FRAME
405-410	430	444	388	1 to 2 weeks

BSE SECTORAL INDICES		
WEEKLY TOP FIVE GAINERS		
SECTORS	CURRENT VALUE	% CHANGE
CAPITAL GOODS	8862.84	1.67
OIL & GAS	7577.63	1.50
PSU	6728.93	1.32
REALTY	1572.27	1.01
BANKEX	10899.21	0.59

BSE SECTORAL INDICES		
WEEKLY TOP FIVE LOSERS		
SECTORS	CURRENT VALUE	% CHANGE
FMCG	4590.25	(2.28)
CD	6300.56	(1.86)
-	-	-
-	-	-
-	-	-

MARKET MOVERS		
WEEKLY NIFTY GAINERS		
COMPANY	CLOSE	% CHANGE
RANBAXY	530.15	8.95
RELINFRA	463.50	6.11
GAIL	337.15	6.09
AXIS BANK	1000.40	5.37
BANKBARODA	672.30	5.06

MARKET MOVERS		
WEEKLY NIFTY LOSERS		
COMPANY	CLOSE	% CHANGE
SESAGOA	181.40	(5.45)
NATIONALUM	56.90	(5.40)
MARUTI	1119.00	(4.08)
STER	96.85	(4.01)
ITC	231.85	(3.21)

WORLD MARKETS WEEKLY PERFORMANCE		
INDEX	CLOSE	% CHANGE
NIFTY	4920.40	0.59
SENSEX	16217.82	0.40
DOW JONES	12454.83	0.69
S&P 500 INDEX	1317.82	1.74
NASDAQ COMPOSITE	2837.53	2.11
FTSE 100 INDEX	5351.53	1.59
CAC 40 INDEX	3047.94	1.33
DAX INDEX	6339.94	1.10
NIKKEI 225	8580.39	(0.36)
HANG SENG INDEX	18713.41	(1.26)
SHANGHAI SE COMPOSITE	2333.55	(0.47)
KOSPI INDEX	1824.17	2.34

After starting with a subdued session, the Nifty fell to make a weekly low of 4803.95 on Wednesday. However some pull back rally was seen on Thursday. At the end of week Nifty closed at 4920.40. It had a net gain of 0.59% over the previous week's close. On the sectoral front, some buying interest was witnessed in Capital goods, Realty, Oil & gas, PSU and Banking stocks. However, FMCG and Consumer durable stocks traded lower.

Nifty has broken its trend line support at 5080 on 8th May, 2012. Now it is consolidating in the band of 5040 and 4790. We expect this range bound movement of Nifty would continue for another few days. If Nifty is able to maintain above 5040 it may test the level of 5130. However, a breach of 4790 is likely to take Nifty lower to 4720 and then 4640 in the extreme short term. Traders are advised to maintain a strict stop loss at 4770 of the long positions.

For the coming week, first support of Nifty is at 4880 and the resistance is 4960. If Nifty breaks 4880, it may further go down to 4790 and then 4720. However, if Nifty is able to sustain above 4960, the level of 5040-5130 would become the next target.

Intra-day calls - 10th May-25th May										
		Total Number of Calls: 40								
		Target Achieved: 17			S/L Triggered: 12		No Result: 11			
Date	SI	Scrip	B/S	Price	S/L	Target1	Target2	Closed at	Result	Profit
5/10/2012	1	IDFC	BUY	118	115.5	120	122	120	Target1 Achieved	1695
5/10/2012	2	POWERGRID	BUY	105	103	107	109	103	S/L Triggered	-1905
5/10/2012	3	NIFTY MAY FUTURE	BUY	4965	4924	5004	5040	4974	Closing Price	181
5/10/2012	4	TCS	BUY	1235	1223	1247	1260	1232.55	Closing Price	-198
5/11/2012	5	JPASSOCIAT	BUY	61	59.5	62.5	64	62.5	Target1 Achieved	2787
5/11/2012	6	MARUTI	SELL	1235	1250	1221	1206	1221	Target1 Achieved	1134
5/11/2012	7	PFC	BUY	147	145	150	153	145	S/L Triggered	-1361
5/11/2012	8	NIFTY MAY FUTURE	BUY	4927	4894	4960	5000	4960	Target1 Achieved	670
5/14/2012	9	PFC	BUY	146	144	149	151	144	S/L Triggered	-1370
5/14/2012	10	BOMDYING	BUY	418	410	425	434	410	S/L Triggered	-1914
5/14/2012	11	NIFTY MAY FUTURE	BUY	4890	4864	4935	4970	4881	Closing Price	-184
5/14/2012	12	SBIN	BUY	1828	1712	1846	1765	1846	Target1 Achieved	985
5/15/2012	13	MCDOWELL	BUY	633	625	640	650	650	Both Targets Achieved	1896
5/15/2012	14	INFY	BUY	2340	2310	2368	2400	2400	Both Targets Achieved	1880
5/15/2012	15	RELCAPITAL	BUY	290	295	294	299	299	Both Targets Achieved	2241
5/15/2012	16	NIFTY MAY FUTURE	BUY	4918	4888	4948	4970	4948	Target1 Achieved	519
5/16/2012	17	TTK PRESTIGE	BUY	3122	3088	3158	3197	3088	S/L Triggered	-1089
5/16/2012	18	DELTACORP	BUY	56	54	58	60	58	Target1 Achieved	4152
5/17/2012	19	LICHSGFIN	BUY	247	244	251	254	244	S/L Triggered	-1215
5/17/2012	20	ICICIBANK	BUY	804	795	813	822	795	S/L Triggered	-1119
5/17/2012	21	PANTALOONR	SELL	139.5	142	137	134	134	Both Targets Achieved	2867
5/17/2012	22	NIFTY MAY FUTURE	BUY	4875	4838	4905	4940	4838	S/L Triggered	-759
5/18/2012	23	JPASSOCIAT	BUY	61.4	60	63	64.5	62.05	Closing Price	1059
5/18/2012	24	RELIANCE	BUY	689	679	698	708	688.55	Closing Price	-65
5/21/2012	25	TATASTEEL	SELL	394	398	390	386	402.75	Target1 Achieved	508
5/21/2012	26	DCB	BUY	40.25	39	41.5	42.5	39.75	Closing Price	-1242
5/21/2012	27	LOVABLE	BUY	318.5	314	323	327	320.6	Target1 Achieved	1036
5/21/2012	28	LUPIN	BUY	543	538	551	556	543.7	Closing Price	129
5/22/2012	29	MARUTI	BUY	1220	1208	1232	1244	1208	S/L Triggered	-984
5/22/2012	30	RECLTD	BUY	178	175	181	184	175	S/L Triggered	-1685
5/23/2012	31	HDFC BANK	SELL	485.5	490.5	481	476	487.2	Closing Price	-350
5/23/2012	32	RPOWER	BUY	90	88.5	91.5	93	90.05	Closing Price	56
5/23/2012	33	BHEL	BUY	212.5	210	216	219	210	S/L Triggered	-1176
5/24/2012	34	SINTEX	BUY	52.5	51.25	53.5	55	53.5	Target1 Achieved	1905
5/24/2012	35	TATACOFFEE	BUY	855	845	864	875	849.4	Closing Price	-655
5/24/2012	36	JPASSOCIAT	SELL	59.15	60.25	58	56.5	58	Target1 Achieved	1944
5/24/2012	37	DELTACORP	BUY	65	63	67	69	63.45	Closing Price	-2385
5/25/2012	38	RELCAPITAL	BUY	320	316	324	328	324	Target1 Achieved	1250
5/25/2012	39	MARUTI	BUY	1145	1130	1160	1174	1130	S/L Triggered	-1310
5/25/2012	40	TATASTEEL	BUY	401	395	406	414	406	Target1 Achieved	1571

Total Profit → 9,497/-

Note: The profit is calculated assuming that - each trade is worth Rs 1 lac,
Past Performance is no guarantee of future returns.

- Investment Banking
- Equity, Commodity & Currency Broking
- Wealth Management
- Insurance Broking
- Club Kautilya
- prpsolutions.com



accountable... answerable, always



Kolkata

Investment Banking
Azimganj House, 2nd Floor,
7, Camac Street, Kolkata- 700 017, India
Tel.: 91 33 2282 9330, Fax: 91 33 2282 933

Brokerage and Wealth Management
Shivam Chambers, 1st Floor,
53, Syed Amir Ali Avenue, Kolkata- 700 019, India
Tel.: 91 33 3051 2100, Fax: 91 33 3051 20205

Mumbai

42A & 74A, Mittal Tower,
4th & 7th floor 210, Nariman Point,
Mumbai- 400 021, India
Tel.: 91 22 2285 5544, Fax: 91 22 2285 5548

New Delhi

417, World Trade Centre, 4th Floor, Babar Road,
Connaught Place, New Delhi- 110 001, India
Tel.: 91 11 4152 8152



E-mail: info@microsec.in Website: www.microsec.in

Disclaimer

The investments discussed or recommended in this report may not be suitable for all investors. Investors should use this research as one input into formulating an investment opinion. Additional inputs should include, but are not limited to, the review of other. This is not an offer (or solicitation of an offer) to buy/sell the securities/instruments mentioned or an official confirmation. Microsec Capital Limited is not responsible for any error or inaccuracy or for any losses suffered on account of information contained in this report. This report does not purport to be offer for purchase and sale of share/ units. We and our affiliates, officers, directors, and employees, including persons involved in the preparation or issuance of this material may: (a) from time to time, have long or short positions in, and buy or sell the securities thereof, of company (ies) mentioned herein or (b) be engaged in any other transaction involving such securities and earn brokerage or other compensation discussed herein or act as advisor or lender I borrower to such company (ies) or have other potential conflict of interest with respect to any recommendation and related information and opinions. The same persons may have acted upon the information contained here. No part of this material may be duplicated in any form and/or redistributed without Microsec Capital Limited' prior written consent.