

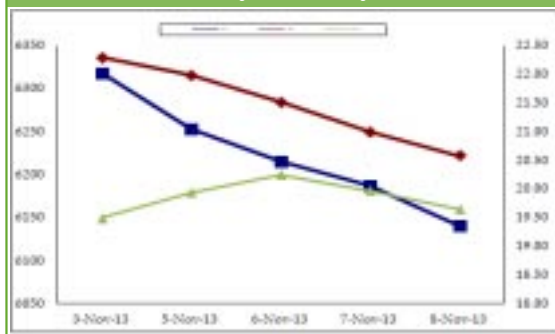
## Zen Derivatives Report - 11/11/2013

### Index Dynamics

#### Nifty Snapshot

	Current	Previous	Change
Nifty Spot	6140.75	6187.25	-0.75%
Nov Fut	6186.60	6227.30	-0.65%
Dec Fut	6237.35	6275.50	-0.61%
Nov Fut OI cr.shr.	2.03	2.08	-2.40%
Nov basis	45.85	40.05	5.80
Nov CoC	13.63	11.25	2.38
Nov Call OI cr.shr.	2.64	2.63	0.38%
Dec IV of calls	19.64	18.91	0.73
Nov Put OI cr.shr	3.13	3.26	-3.99%
Dec IV of Puts	16.45	18.36	-1.91
HV	20.58	20.99	-0.41
Nifty PCR OI	1.19	1.24	-0.05
Nifty OI Rs.cr.	47898	49312	-2.87%

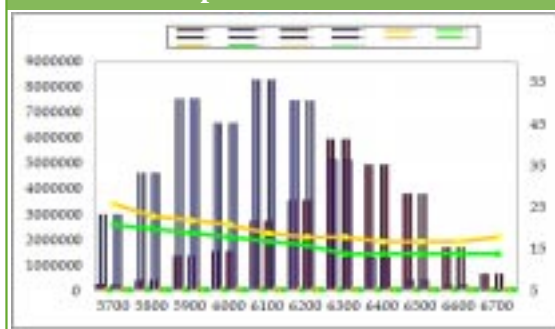
#### Nifty Volatility



#### Futures OI & COC



#### Options OI & IV



#### FII Activity in F&O (Previous Session)

	Buy/Sell Net (Rs.cr.)	Outstanding OI (Rs.cr.)
Index Futures	-1087	15205
Index Options	668	46870
Stock Futures	-334	28353
Stock Options	15	1231
Cumulative	-738	91659

### Nifty Dynamics

- Nifty traded on a negative note amid selling pressure in select frontline stocks. Nifty lost by 0.75% to closed at 6140.75 levels, in the previous trading session.
- Nifty Futures for the Nov Series were trading at a premium of 45.85 points against a premium of 40.05 points. Futures open interest has decreased to 2.03 Cr shares, which indicates closure of short positions, in the previous trading session.
- Open interest of all Call options for the Nov series has increased to 2.64 Crore shares, the average implied volatility has increased to 19.64%, which indicates addition of long positions, in the previous trading session.
- Call options strikes of 6200 has seen addition of open interest, for the Nov series in the previous trading session.
- Open interest of all Put options for the Nov series has decreased to 3.13 Cr shares, the average implied volatility has decreased to 16.45%, which indicates closure of long positions, in the previous trading session.
- Put options strikes of 5900 to 6300 have seen closure of open interest, for the Nov series in the previous trading session.
- Nifty Put-Call ratio of open interest has decreased to 1.19 for the Nov series, which indicates closure of open interest in call options, in the previous trading session.
- FII's were net sellers in the F&O segment, to the tune of Rs 738 Cr in the Previous trading session.
- Overall derivatives data for the Nov series indicates that Nifty Futures have seen closure of short positions, while Call options have seen addition of long positions, whereas Put options have seen closure of long positions, for the Nov series in the previous trading session.

### Derivatives Outlook

#### Nifty Call

- Nifty Call (Spot: 6140.75):** Sell Nifty if it trades below 6140, SL@ 6170, Targets: 6110 & 6080 or Buy Nifty if it trades above 6170, SL@ 6140, Targets: 6200 & 6230 (All are spot levels).
- Nifty options strategy:** Buy one Nifty Nov 6100 PE@ Rs.66; and Sell one Nov 6200 PE @ Rs.105.45; Breakeven:6061; Time frame: 5-6 Days.
- Bank Nifty (LTP - 10913.15):** Support - 10814 / 10715 / 10489 Resistance: 11040 / 11166 / 11392.

#### Stock Call

- Buy Tatamotors trading above 386 SL 375 TG 395/405**

Sectors Snapshot

Sector	OI	% Chg in OI	COC	Chg in CoC
Agri-Input	2.53	-0.54%	15.84	5.04
Auto & Ancl	8.08	10.55%	15.42	4.14
BFSI	24.98	2.94%	14.66	3.19
Cap Goods	4.89	0.43%	1.34	5.03
Cement	2.51	5.03%	11.97	4.64
Const & Infra	32.53	3.29%	13.38	5.71
Energy	4.58	3.10%	15.77	4.20
FMCG	5.29	1.87%	13.41	0.58
Index	2.03	-2.40%	13.63	2.38
Media	1.99	0.58%	8.47	2.70
Metals	11.02	0.34%	12.17	1.65
Misc	2.06	2.01%	14.21	5.04
Pharma & HC	4.53	0.55%	13.91	2.22
Power	16.66	0.00%	12.96	5.78
Software	2.80	2.29%	11.40	3.42
Telecom	6.06	2.43%	11.82	2.71
Textiles	0.48	25.21%	11.19	-1.14

Stock futures at a glance

- Auto & Ancl, BFSI, Cap Goods, Cement, Const & Infra, Energy, FMCG, Media, Metals, Pharma & HC, Software and Telecom sectors have seen addition of long positions, while Textiles sector has seen addition of short positions, for the Nov series in the previous trading session.
- Agri-Input and Power sectors have seen closure of short positions, for the Nov series in the previous trading session.
- UBL, IBREALEST and TATAMOTORS have seen addition of long positions, while ARVIND and DABUR have seen addition of short positions, for the Nov series in the previous trading session.
- SUNTVTITAN, AUROPHARMA and UNIONBANK have seen closure of long positions, while BIOCON has seen closure of short positions, for the Nov series in the previous trading session.
- SBIN, TATAMOTORS, PNB, YESBANK, TECHM, AXISBANK, TATASTEEL, RANBAXY, ICICIBANK and DLF were the most active stock futures contracts, in the previous trading session.

Most Active Stock Futures

Symbol	Expiry	Vol(C)	Vol(Rs.L)	LTP	OI
SBIN	28-Nov-13	34,134	75,178.85	1,751.95	61,68,625
TATAMOTORS	28-Nov-13	29,305	1,13,316.57	392.60	2,26,08,000
PNB	28-Nov-13	27,131	72,153.54	525.00	56,37,000
YESBANK	28-Nov-13	25,012	45,074.13	356.00	1,50,56,500
TECHM	28-Nov-13	24,388	1,01,834.53	1,684.00	32,25,750
AXISBANK	28-Nov-13	22,920	65,707.06	1,126.00	53,63,250
TATASTEEL	28-Nov-13	20,824	73,952.27	357.85	1,80,39,000
RANBAXY	28-Nov-13	17,548	36,709.54	424.10	1,09,14,500
ICICIBANK	28-Nov-13	17,542	46,431.48	1,053.10	85,81,250
DLF	28-Nov-13	17,110	25,897.70	153.45	2,70,52,000

Change in open interest

Top 5	LTP	OI	% Chg in OI	COC	chg in COC
UBL	789.95	287250	31.62	16.79	0.73
IBREALEST	67.15	15344000	25.73	15.07	3.70
ARVIND	114.85	4848000	25.21	11.19	-1.14
TATAMOTORS	388.80	22608000	24.80	22.09	7.23
DABUR	163.95	2962000	17.08	6.00	-9.37
Least 5	LTP	OI	% Chg in OI	COC	chg in COC
SUNTV	413.60	1582500	-4.03	0.66	-3.29
TITAN	235.90	7607000	-4.12	11.68	-1.25
AUROPHARMA	260.75	14052000	-5.08	2.45	-8.85
UNIONBANK	128.90	6206000	-6.15	12.11	-2.27
BIOCON	375.35	1425000	-10.94	13.96	4.30

Options at a glance

- Nifty Nov 6300 CE, Nov 6400 CE, Nov 6200 CE, Nov 6500 CE and Nov 6600 CE, were the most active Nifty Call options, in the previous trading session.
- Nifty Nov 6100 PE, Nov 6200 PE, Nov 6000 PE, Nov 5900 PE and Nov 6300 PE, were the most active Nifty Put options, in the previous trading session.
- SBIN Nov 1800 CE, TATAMOTORS Nov 400 CE, RELIANCE Nov 900 CE, PNB Nov 560 CE and DLF Nov 160 CE, were the most active stock Call options, in the previous trading session.
- SBIN Nov 1700 CE, PNB Nov 500 PE, TATAMOTORS Nov 380 PE, TECHM Nov 1600 PE and PNB Nov 540 PE, were the most active stock Put options, in the previous trading session.

Most Active Stock Options

Call - Underlying	Exp Date	Strike	Contracts	OI(shares)	LTP
SBIN	28-Nov-13	1,800	6439	2,96,000	51.50
TATAMOTORS	28-Nov-13	400	4961	21,68,000	12.00
RELIANCE	28-Nov-13	900	3443	5,84,500	12.70
PNB	28-Nov-13	560	3067	3,43,000	10.50
DLF	28-Nov-13	160	2891	21,35,000	5.70
Put - Underlying	Exp Date	Strike	Contracts	OI(shares)	LTP
SBIN	28-Nov-13	1,700	3859	2,88,375	47.50
PNB	28-Nov-13	500	3701	2,55,500	13.50
TATAMOTORS	28-Nov-13	380	2217	9,72,000	9.50
TECHM	28-Nov-13	1,600	1864	1,37,500	21.00
PNB	28-Nov-13	540	2965	1,01,500	31.00

Most Active Index Options

Call - Underlying	Exp Date	Strike	Contracts	OI(shares)	LTP	% Chg OI	IV*
NIFTY	28-Nov-13	6,300	3,45,355	45,51,200	48.05	2.17	18.00
NIFTY	28-Nov-13	6,400	2,41,001	38,01,500	24.00	-5.46	17.00
NIFTY	28-Nov-13	6,200	2,19,273	26,39,350	89.90	22.01	18.00
NIFTY	28-Nov-13	6,500	1,42,418	32,23,300	10.45	-3.21	17.00
NIFTY	28-Nov-13	6,600	54497	15,78,100	4.30	-7.26	17.00
Put - Underlying	Exp Date	Strike	Contracts	OI(shares)	LTP	% Chg OI	IV*
NIFTY	28-Nov-13	6,100	2,84,722	36,34,750	67.00	-2.43	17.00
NIFTY	28-Nov-13	6,200	2,20,014	35,32,300	106.80	-6.08	16.00
NIFTY	28-Nov-13	6,000	2,01,230	43,05,900	39.40	-5.52	18.00
NIFTY	28-Nov-13	5,900	1,02,765	28,35,300	22.60	-9.00	19.00
NIFTY	28-Nov-13	6,300	71751	19,62,750	163.00	-10.85	14.00

\* Implied Volatility

Disclaimer

This document was prepared by Zen Securities Ltd (ZSL), on the basis of publicly available information, internally developed data and other sources believed to be reliable. The material contained herein is for information only and under no circumstances should be deemed as an offer to sell or a solicitation to buy any security. ZSL or its employees, may, from time to time have positions in the stocks mentioned in this document. While all care has been taken to ensure that the facts are accurate and the opinions are reasonable, ZSL shall not be liable for any loss or damage howsoever arising as a result of any person acting or refraining from acting in reliance on any information contained therein.