

# FRAKTJAKT

**Fraktjakt API**

Version 3.8.0 - EN

2020-05-15

# Table of contents

<b>Welcome!</b> .....	<b>5</b>
Complete Shipping Modules.....	5
Ready made programming libraries.....	5
Help.....	5
Latest version of manuals.....	5
<b>Overview</b> .....	<b>6</b>
<b>Versions</b> .....	<b>7</b>
<b>Why integrate with Fraktjakt?</b> .....	<b>11</b>
Configuration Possibilities with Fraktjakt .....	11
Useful functions .....	12
<b>Server environments</b> .....	<b>13</b>
TEST API – the test environment. URL: <a href="https://testapi.fraktjakt.se">https://testapi.fraktjakt.se</a> .....	13
PROD API – the production environment. URL: <a href="https://api.fraktjakt.se">https://api.fraktjakt.se</a> .....	13
<b>Interaction Diagram</b> .....	<b>14</b>
<b>Integration Scenarios</b> .....	<b>15</b>
1. Several shipping services are presented to the customer.....	15
2. One shipping service is presented to the customer .....	15
3. Fixed shipping price, using webshop's pre-determined shipping service.....	15
4. Fixed shipping price, webshop chooses shipping service later on.....	16
5. Webshop portal searches and orders shipping for a member webshop.....	16
6. Show what's happening with a shipment after it's been purchased in Fraktjakt.....	16
<b>Registrations</b> .....	<b>17</b>
Register a company with a webshop integration.....	17
Register an integration that is linked to your existing company.....	18
<b>About the API calls</b> .....	<b>20</b>
Generall information about the XML in the API calls.....	20
<b>Common to all API calls</b> .....	<b>21</b>
Common in all API responses.....	21
Consignor element.....	22

Address elements.....	25
Address management.....	27
Commodity elements.....	28
<b>Fraktjakt Query API.....</b>	<b>32</b>
XML for Query API calls.....	32
When the response is more important than precision.....	33
Example 1 - Regular shipping query .....	38
Example 2 - Regular shipping query with given parcels.....	39
Example 3 - Regular shipping query with multiple packages.....	40
Example 4 - Search for a specific shipping service .....	41
Example 5 - Regular FOREIGN shipping query.....	41
XML for Query API responses.....	43
<b>Requery API (cached shipment search).....</b>	<b>48</b>
XML for Requery API calls.....	48
Example.....	49
Response.....	49
<b>Order API - make a shipment ready to be purchased.....</b>	<b>55</b>
Calltype 1 – Create an order from a previously created shipment.....	55
Call type 2 – Create and order directly without a previously created shipment.....	56
XML for Order API calls.....	56
Example – Call type 1 Domestic.....	64
Example – Call type 1 International.....	64
Example – Call type 2 Domestic.....	65
Example – Call type 2 International.....	66
<b>Shipment API</b>	
<b>(Merchant controlled).....</b>	<b>71</b>
Call.....	72
Notes.....	76
Example – Domestic.....	76
Svar.....	77
<b>Track &amp; Trace API.....</b>	<b>79</b>
The Call.....	80
TEST API, for development and test.....	80
PROD API, for real shipment purchases.....	80
Example.....	80

Response.....	80
Status Codes.....	84
<b>Link to the shipment.....</b>	<b>86</b>
<b>Webshops API</b>	
<b>(create a user and a webshop).....</b>	<b>87</b>
XML for webshop API calls.....	87
<b>Testing using the API Test Page.....</b>	<b>93</b>
<b>Tips when planning a parcel module integration.....</b>	<b>94</b>
<b>Other integration possibilities.....</b>	<b>95</b>
Log in to Fraktjakt account.....	95
Change password.....	95
Administration of the integration associated with the logged-in user.....	95
Administration of addresses.....	95
Track a shipment based on tracking number and shipping company.....	95
Information about what can be bought in Fraktjakt right now.....	96
More information on search results.....	96
Terms and conditions for the shipping product.....	96
Other information about the shipping product.....	96
<b>Common problems.....</b>	<b>97</b>
<b>Error reporting.....</b>	<b>100</b>
<b>Support.....</b>	<b>100</b>
Contact us .....	100
<b>Appendix 1 - Language.....</b>	<b>101</b>
<b>Appendix 2 – Countries in Fraktjakt.....</b>	<b>102</b>

# Welcome!

This document describes how to use the Fraktjakt API to integrate Fraktjakt with other system and services such as webshops and business systems.

In order to use the Fraktjakt API, you need to have some knowledge of *HTML* and *XML*.

## Complete Shipping Modules

If you want to integrate Fraktjakt with an online store such as *Joomla*, *FortNox*, *Quickbutik*, *AbenteCart*, *LiteCart*, *Odoo*, *OpenCart*, *Fortnox*, *PrestaShop*, *Shopify*, *WooCommerce*, *EasyCart*, *Joomla Virtuemart*, *X-Cart*, *Zen Cart*, *OsCommerce*, or *Magento*, there are complete modules for it. Instead, we recommend that you download these modules from <https://www.fraktjakt.se/services/download>. Most modules are completely free of charge.

## Ready made programming libraries

If you are programming in *PHP*, *Python* or *Ruby on Rails*, everything has already been done. There are ready-made libraries that are only to download and use.

A complete list of modules and libraries can be found here:  
<https://www.fraktjakt.se/services/ecommerce?locale=en>

## Help

If you encounter any problems while trying to integrate your system with Fraktjakt, we will be glad to help out. We appreciate any questions and comments that you may have about our product and about this documentation.

Contact us at [api@fraktjakt.se](mailto:api@fraktjakt.se) or [https://www.fraktjakt.se/om\\_fraktjakt/kontakt](https://www.fraktjakt.se/om_fraktjakt/kontakt)

There is also a Google group for announcements and support that we strongly recommend  
<https://groups.google.com/d/forum/fraktjakt-api>

## Latest version of manuals

During your integration work you may need to change some settings on your registered Fraktjakt account. Instructions on how to do this (currently only in Swedish) can be found in the Fraktjakt webshop manual for integrators:

[https://www.fraktjakt.se/downloads/fraktjakt\\_manual\\_webbutik.pdf](https://www.fraktjakt.se/downloads/fraktjakt_manual_webbutik.pdf)

The latest version of the document you are reading right now can be found at:

[https://www.fraktjakt.se/downloads/Fraktjakt\\_API\\_en.pdf](https://www.fraktjakt.se/downloads/Fraktjakt_API_en.pdf)

# Overview

Fraktjakt is a service for comparing, purchasing and managing shipping services over the Internet. It is available both as a website (<https://www.fraktjakt.se>) and as an API (*Application Programming Interface*) that can be called by other services on the Internet. This document describes how you can use the **Fraktjakt API** to integrate Fraktjakt with other systems and services, such as webshops, business systems, on-line marketplaces, etc.

The basic philosophy of the Fraktjakt API is that it should be as simple as possible to integrate any system with Fraktjakt. Therefore, we try to keep details such as configurations and settings separate from the API; these tasks are performed manually using the Fraktjakt website instead.

All new releases we release should also be backward compatible with old versions. Therefore, it is important to send in the version of the API that is used in the call. The version is specified in the `<api_version>` element.

The current version of the API is solely XML-based. We may add interfaces based on Web Services or SOAP if we see that there is a demand for this.

# Versions

Important changes made in this document. Notable additions or changes since the last version of this document are indicated with a **yellow** background.

Version	Date	Change and additions
3.8	20200515	<p>Clarification on whether a price shown is with or without VAT.</p> <p>Currency Support.</p> <p>Information about Packing list and type of goods.</p> <p>Better message iif Fraktjakt don't have the information about closes delivery agent.</p> <p>New tag in the query api that specifies whether the service has delivery to agents or not.</p> <p>Explanation how notification is chosen in Order-api.</p>
3.7	20200205	<p>New shipping modules for integration.</p> <p>Ireland requires postal code.</p> <p>Strret_address_1 no longer required in an address.</p> <p>The error levels in all answers are better explained.</p> <p>New tags in all replies &lt;tracking_link&gt; and &lt;tracking_code&gt; with link to track the shipment.</p> <p>Contact email to customer service.</p> <p>Order API: The &lt;user_notes&gt; tag will not be supported in the future for bookings. It is not needed.</p> <p>Shipment API: Support for the &lt;parcels&gt; tag.</p> <p>Address lines longer than 35 characters are cut.</p> <p>Submitted addresses are matched against the address register and the contact register.</p>
3.6	20190625	<p>The highest of the &lt;value&gt;-tagg and the commodities total value is used for customs handling and to calculate if free-shipment prices is to be displayed in query-api.</p> <p>New tagg for recipient - &lt;tax_id&gt;. Used for tax identification number for shipments in or out of EU.</p>
3.5	20190426	<p>Changed the account type "webshop" to "integration" to corelate with our new account types.</p> <p>Updated layout to the same template as our other user guides and manuals.</p>
3.4	20190310	<p>New tag for specifying sender details &lt;sender&gt; in Order API and Shipment API.</p>

		<p>Shipment API supports support receipt paid shipping.</p> <p>Clearer how to send pallet, stackable and not stackable.</p>
3.3	20190120	<p>New PHP module.</p> <p>The chapter on how to calculate the package size based on the size of the commodities has been removed, since it is now done server-side in Fraktjakt.</p> <p>Logic for all freight searches is improved. Commodities are the element you should use instead of Parcels. Then a packing algorithm can be used (bin-packing) to instead calculate the appropriate package.</p> <p>The ability to specify commodities instead of parcels in the Query API and Order API.</p> <p>New chapter on the Commodity element and fewer absolute requirements for the content in the elements.</p> <p>The ability to specify Length, Width, and Height in the Commodity element to allow for bin-packing calculations of optimal packages to be used in shipping.</p> <p>Other new tags on commodities: in_own_parcel, article_number, shelf_position</p> <p>New tag for Query API and Shipment API that overrides the settings for how the search is to be sorted.</p> <p>Better error management if you enter an incorrect number in the &lt;shipping_product_id&gt; element in the Order API.</p> <p>Less stringent requirements for input data. If certain information is missing, the call is not incorrect, but the missing information can be completed later in Fraktjakt.</p> <p>Better support for calls in English.</p> <p>Various clarifications.</p> <p>Updated layout of the document.</p>
3.2.1	20181108	<p>The recipient's email address is not mandatory in the Shipment API, but it is highly recommended that it be sent in (just a correction of an incorrect text in the latest version).</p> <p>A new element &lt;tracking_code&gt; containing the code required to track the shipment is now included in the response from the Track &amp; Trace API.</p> <p>A new element &lt;tracking_number&gt; containing the shipments tracking number is now included in the response from the Track &amp; Trace API when the shipment is fully processed (purchased).</p>
3.2	20181024	<p>The recipient's email address must not be specified in the Shipment API.</p> <p>New section that describes the new Track &amp; Trace link.</p> <p>A new element &lt;tracking_link&gt; containing the shipments' tracking link is now included in the response from the Track &amp; Trace API.</p>
3.1.1	20180922	<p>The "Change and additions" text describing the new elements &lt;status&gt; and &lt;access_link&gt; added in version 3.1 have been corrected (Requery and Track &amp; Trace were added where missing).</p>
3.1	20180915	<p>New URL's for TEST API and PROD API environments (using https).</p>



		<p>All displayed Fraktjakt URL's and clickable links now have https:// prefix.</p> <p>Added section "Register a webshop that is linked to your existing company" to cover those cases where the user already has a company registered at Fraktjakt.</p> <p>A new element &lt;status&gt; containing the API call status is now included in the response to the Query, Requery, Track &amp; Trace, Order &amp; Shipment API calls.</p> <p>A new element &lt;access_link&gt; containing a link for managing a shipment is now included in the response to the Query, Requery, Order &amp; Shipment API calls.</p> <p>A new element &lt;amount&gt; containing the cost of the shipment is now included in the response to the Order API calls.</p> <p>Notable additions or changes since the last version of this document are indicated with a yellow background.</p>
3.0	20180611	<p>Synchronized with the Swedish version of this document dated 20180427.</p> <p>All text that has been added since the last version of this document is indicated by a green background.</p> <p>A new API has been added – The Shipment API.</p> <p>Two sections have been added to describe XML element blocks that are common to more than one API - specifically the consignor and address elements and their subelements.</p> <p>A section about integration scenarios has been added.</p> <p>New webshop settings that have been introduced in Fraktjakt are described.</p> <p>The relationships between accounts, companies and webshops have been simplified.</p> <p>Descriptions of existing functions have been clarified and improved.</p> <p>New "redirect" parameters have been introduced in order to receive API responses from Fraktjakt in different formats.</p> <p>A shipment can now always be accessed/managed via a single uniform URL - <a href="https://www.fraktjakt.se/shipments/show/SHIPMENT_ID&amp;access_code=ACCESS_CODE">https://www.fraktjakt.se/shipments/show/SHIPMENT_ID&amp;access_code=ACCESS_CODE</a></p> <p>Changes related to addresses:</p> <p>city_name is no longer required for countries where postal code is required. Fraktjakt determines the city name based on the postal code.</p> <p>country_subdivision has been eliminated. It shall not be included in any API calls.</p> <p>Recipient addresses may now include in country codes.</p> <p>Fraktjakt now supports customised notifications.</p> <p>export_reason is now required for both export and import shipments.</p> <p>Improved language support.</p> <p>Language can now be specified for notifications to receivers of shipments.</p> <p>Appendix 1 and 2 added.</p>

2.91	20150225	<p>New non-Required elements in Consignor field.</p> <p>system_name – name of the platform sending the API call. It can be the name of your webshop platform, i.e. "Magento", Prestashop", "WooCommerce", etc.</p> <p>system_version – version number of the system mentioned in the "system_name" field above.</p> <p>module_version – version number of the Fraktjakt shipping module in use.</p> <p>api_version – version number of the Fraktjakt API in use (should be the same number as this documents version number!).</p>
2.9	20140616	<p>Clarification of the API's functionality:</p> <p>1) a parcels length, width and height must be provided (Required: Yes) if the &lt;parcel&gt; element is included in the call to Order API call type 2 [see Order API Call section].</p> <p>2) to create an order from a previous query call, a parcels length, width and height must be provided in the original query call [see Query API Call section].</p>
2.8	20140603	<p>New element &lt;shipper_info&gt; in the Query and Requery API to switch on/off additional information about the shipper (in the Api response) for each returned <i>shipping_product</i>.</p> <p>New element &lt;name&gt; under &lt;shipping_product&gt;, where the shipping product name is returned without also containing the shipper name.</p> <p>Corrected name of element (from <i>time_guarantie</i> to <i>time_guarantee</i>).</p>
2.7	20140307	<p>The elements &lt;commodities&gt; and &lt;parcels&gt; are no longer required when calling Order API type 2 to order <i>Fraktbag</i> products (<i>shipping_product_id</i> = 137 – 141).</p>
2.6	20140305	<p><i>Reason for export</i> must be entered into the Order API for international shipments.</p> <p>Added some additional XML examples for Query and Order API calls.</p>
2.5	20140301	<p>Support for <i>Fraktjakt+</i> and <i>Eget fraktavtal (individual shipping contracts)</i> subscriptions.</p>
2.4	20140225	<p>Fixed bug in multiple multiple shipments handling.</p> <p>Corrected section about "<i>Error messages from the API</i>". Added more error messages and solutions.</p> <p>Address handling explained under <i>Order API</i>.</p>
2.3	20140224	<p>Added functionality in the <i>Order API</i>, to enable creation of an order without creating a shipment through <i>Query API</i> first.</p> <p>New Fraktjakt API test page</p> <p>Track &amp; Trace API (<i>trace_xml</i>) now requires authentication (include Consignor ID &amp; Key).</p> <p>Fixed bug in MD5 handling, to respond with a faster cached reply, when you have entered the same <i>Query API</i> call (within 24 hours).</p>

# Why integrate with Fraktjakt?

Because it's completely free to use, and it will save you time and money!

**Save a lot of money!** Always choose the most profitable freight, whether you use your own freight or Fraktjakt's.

**Save even more money!** Fraktjakt has built-in packaging algorithms that always ensure that you use the smallest possible packaging and do not pay to send air.

If you have a webshop, Fraktjakt gives you **simplified shipping management** and **discounted shipping prices**. Your customers will be able to choose the quickest, cheapest or most convenient shipping alternative when they purchase products on your site.

Fraktjakt eliminates the need to procure your own shipping contracts, since we have already negotiated volume based shipping contracts for both domestic and international shipping. You get access to highly discounted prices when you use Fraktjakt through an API integration.

Furthermore, Fraktjakt also simplifies management of your shipping, so you can focus more on selling your products. When you integrate Fraktjakt's order handling system with your application's sales functions, you are essentially plugging in your system to a variety of shipping providers. Fraktjakt manages all of your communication with the shippers. It also generates the necessary shipping documents, etc.

## ***Configuration Possibilities with Fraktjakt***

- Selection of which shipping services your customers may choose when they make purchases in your webshop;
- Selection of whether to sort the shipping alternatives by **time** or **price** when they are presented to your customers;
- Selection of whether shipping time will be displayed as **Number of days** or **Arrival time**;
- Selection of **Free shipping** when a customer's purchase exceeds a specific amount;
- Setting a price for picking up a product in person instead of having it shipped;
- What measures the webshop parcels has and how to use it automatically.

For example, as Standard Package and Package Templates.

- Definition of optional standard box dimensions, if you want Fraktjakt to use these;
- Selection of which days shippers can pick up products for delivery;
- Definition of pick-up times, if applicable;

- Custom track-and-trace page (with your logo, etc.);
- Custom shipping dispatch notification e-mails to your customers;
- Control over which categories of e-mails you receive from Fraktjakt.
- Packing method (bin-packing algorithm). In what way Fraktjakt should calculate which package should be used.

## ***Useful functions***

- Compare your own shipping contracts with other shipping options to always choose the most optimal.
- Fraktjakt can handle all products in the customer's shopping cart, regardless of whether they are sent as separate parcels or if multiple products are packaged together in a standard box.
- Fraktjakt allows you to define the dimensions of individual products. This provides more exact price calculations.
- Fraktjakt can determine which products in your customer's shopping cart will fit into which Parcel Templates (bin-packing) and base the shipping prices on your Parcel Template's size. This is normally cheaper than basing the shipping prices on the dimensions of your individual products.
- Fraktjakt estimates delivery times based on your settings, i.e. which days shippers can come and pick up products for delivery, along with any specific pick-up times that you may have defined.
- Your customers only see the shipping alternatives that you want them to be able to choose.
- When your customers choose delivery that is not door-to-door, they are shown the nearest pick-up location and how far it is from their address to that location.
- Fraktjakt provides links to maps that help your customers locate pick-up locations.
- Fraktjakt prepares booking and pick-up of one or more shipments.
- Frakt creates shipping documents for both domestic and international shipments, to be printed out on your own printer.
- Possibility to connect multiple integrations to one account and multiple users to every integration, all on an invoice.

# Server environments

Fraktjakt has two separate server environments that you can use with your API integration.

## ***TEST API – the test environment.***

**URL:** <https://testapi.fraktjakt.se>

The test environment is a sandbox for use under development and testing. Here you can send as many API calls as you want to create test shipments without incurring any actual costs. All other functionality is the same as in the live production environment except that shipping documents are created with watermarks (and are therefore not valid) and the payment process is a simulation (no real payment charges).

NOTE: The test environment may offer shipping alternatives that aren't actually purchasable via Fraktjakt. Conversely, some shipping alternatives that are purchasable via Fraktjakt may not be offered in the test environment.

NOTE: Remember that the transactions that are performed in the test environment are not necessarily saved very long. We occasionally may purge the test server data to keep it efficient.

## ***PROD API – the production environment.***

**URL:** <https://api.fraktjakt.se>

The production environment shows shipping services that can actually be purchased via Fraktjakt.

This is where you send your API calls when you have finished testing and are ready to purchase shipping services for real through Fraktjakt.

This environment is optimized to provide more efficient searches and better stability and security for your integration.

NOTE: Avoid sending API calls to <https://www.fraktjakt.se>. This could seriously slow down your application, provide unpredictable results and make it more difficult for us to troubleshoot any API-related problems you encounter.

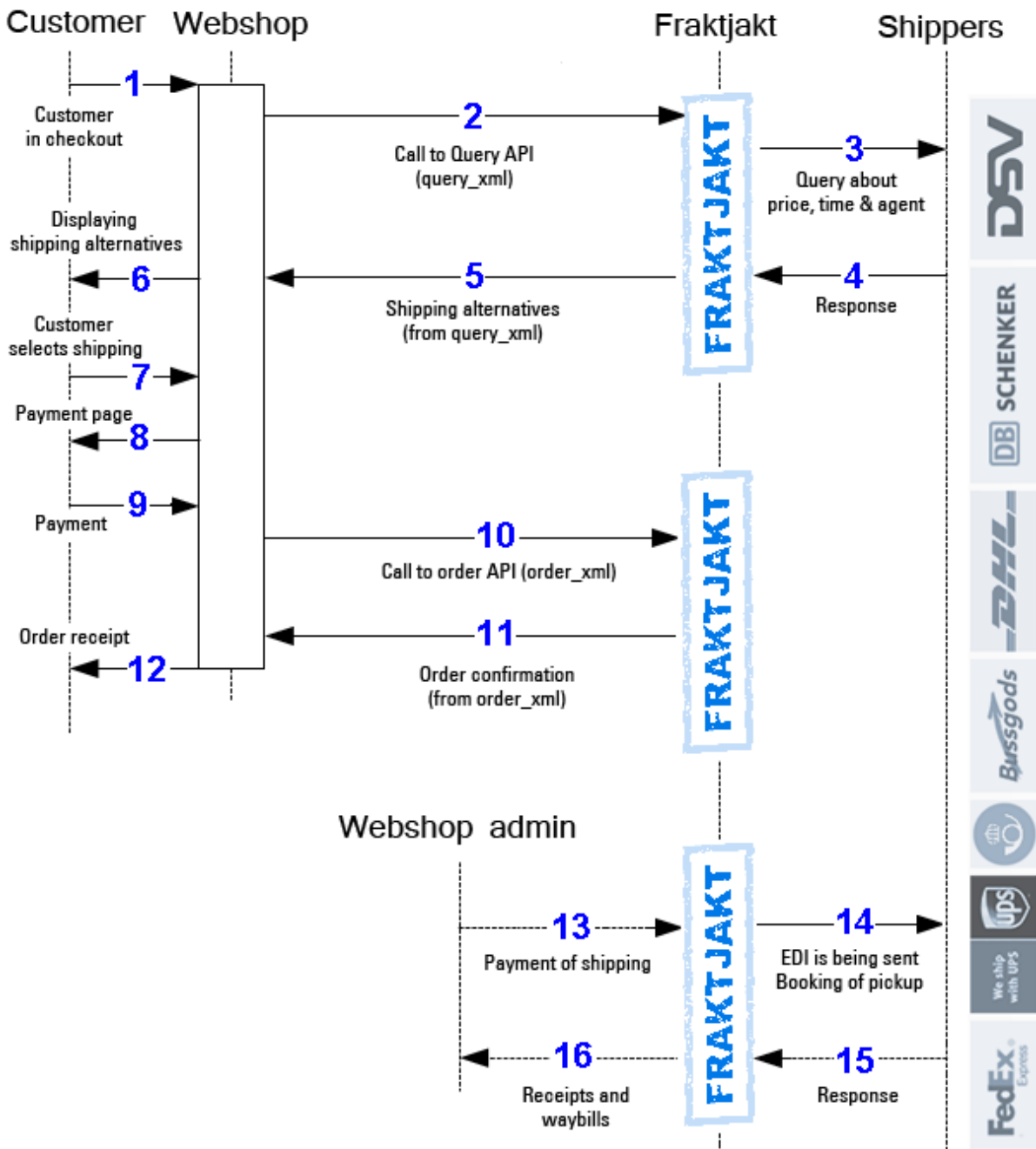
NOTE: The <https://www.fraktjakt.se> URL should only be used from your web browser, when you are managing your shipments, printing out your shipping documents, configuring your Fraktjakt account, etc.

# Interaction Diagram

The following diagram depicts the flow of interaction between a webshop customer, the webshop, and Fraktjakt.

The details that are shown of the interaction between the webshop customer and the webshop are just an example. The exact details will vary, depending on the workings of each individual webshop.

Note that the webshop manager needs to manually log on to the Fraktjakt website in order to pay for the shipping services that the webshop's customers have ordered. Multiple shipping orders can be paid for and handled simultaneously using Fraktjakt's transport administration interface.



# Integration Scenarios

Listed below are some of the most common scenarios when using the API's.

## 1. Several shipping services are presented to the customer

Webshops that want to let their customers choose the shipping service can use the *Query API* in combination with *Order API, type 1*. The customer's choice may be based on the price or maybe instead on the proximity to the agent location where they will pick up their package.

- The webshop performs a price query using *Query API*.
- The query results are displayed as alternative shipping services in the webshop shopping cart or checkout.
- The customer chooses one of the presented shipping services.
- The webshop creates a shipment order in Fraktjakt by sending the customer selected shipping service in a call to *Order API, type 1*.
- The webshop administrator manages the new shipment order in Fraktjakt via this link: [https://www.fraktjakt.se/shipments/show/SHIPMENT\\_ID?access\\_code=ACCESS\\_CODE](https://www.fraktjakt.se/shipments/show/SHIPMENT_ID?access_code=ACCESS_CODE)

## 2. One shipping service is presented to the customer

The above query can be narrowed down to just one specific shipping service in the case that the webshop does not want the customer to decide on the shipping service, since it wants to always use just one specific shipping service.

- Retrieve the price of only one shipping service using *Query API*, see “*Example 3 - Search for a specific shipping service (enter 'shipping\_product\_id')*” for details.
- The query result is displayed as the only shipping service in the webshop shopping cart or checkout.
- The webshop creates a shipment order in Fraktjakt by sending the shipping service in a call to *Order API, type 1*.
- The webshop administrator manages the new shipment order in Fraktjakt via this link: [https://www.fraktjakt.se/shipments/show/SHIPMENT\\_ID?access\\_code=ACCESS\\_CODE](https://www.fraktjakt.se/shipments/show/SHIPMENT_ID?access_code=ACCESS_CODE)

## 3. Fixed shipping price, using webshop's pre-determined shipping service

This scenario illustrates a webshop that prefers to offer a fixed shipping price to its customers and wants to always use a specific pre-chosen shipping service to fulfill all of its order deliveries. This can be facilitated by using the *Order API, type 2* which can directly create a new

shipment order in Fraktjakt without necessitating a price query in advance.

- Find the available shipping services at Fraktjakt using this listing:  
[https://www.fraktjakt.se/shipping\\_products/xml\\_list](https://www.fraktjakt.se/shipping_products/xml_list)
- The webshop creates a shipment order in Fraktjakt by sending the shipping service in a call to *Order API, type 2*.
- The webshop further manages the shipment order via the link:  
[https://www.fraktjakt.se/shipments/show/SHIPMENT\\_ID?access\\_code=ACCESS\\_CODE](https://www.fraktjakt.se/shipments/show/SHIPMENT_ID?access_code=ACCESS_CODE)

#### 4. Fixed shipping price, webshop chooses shipping service later on

A webshop that wants to offer a fixed shipping price to its customers and wants to easily transfer the order details into a new shipment order in Fraktjakt. The webshop later on manages the shipment order in Fraktjakt, choosing the appropriate shipping service itself.

- Send all the customer information, including delivery address, and the purchased item details to Fraktjakt using the *Shipment API*.
- The webshop further manages the shipment order via the link:  
[https://www.fraktjakt.se/shipments/show/SHIPMENT\\_ID?access\\_code=ACCESS\\_CODE](https://www.fraktjakt.se/shipments/show/SHIPMENT_ID?access_code=ACCESS_CODE)

#### 5. Webshop portal searches and orders shipping for a member webshop

This is useful when a webshop portal integrates multiple webshop customers with Fraktjakt.

- The webshop portal does a price query with *Query API*, possibly searching for individual shipping services by adding a `shipping_product_id`.
- A customer chooses one of the presented alternatives.
- The webshop portal submits the selected shipment to Fraktjakt using *Order API, type 1* (alternatively 2), with the integration credentials of its member webshop using the `referred_consignor`-element.
- Fraktjakt returns a link by which the shipping purchase can be completed by the member webshop.

#### 6. Show what's happening with a shipment after it's been purchased in Fraktjakt

- Fraktjakt has many settings that allow webshops to create a customized page for customers to track their shipments in a user-friendly manner.
- You can also create your completely own parcel tracking page with the *Track & Trace API on page 79*.



# Registrations

## **Register a company with a webshop integration**

Before your system can communicate with Fraktjakt, you must have a *Consignor ID* and a *Consignor key*.

*NOTE! The instructions below show links to both the TEST API and PROD API environments. Please use the TEST API links during integration work (development and testing). Only use the PROD API links once you have everything working satisfactorily and you are ready for production.*

1. If you already have a Fraktjakt user account, log in to it now.

TEST API: <https://testapi.fraktjakt.se/account/login> (Recommended for initial testing!)

PROD API: <https://api.fraktjakt.se/account/login>

2. If you already have a company registered with Fraktjakt, go to the next section "*Register an online store that is linked to your company*". Otherwise, go to the "**Register a Company**" page:

TEST API: <https://testapi.fraktjakt.se/account/register> (Recommended for initial testing!)

PROD API: <https://api.fraktjakt.se/account/register>

3. Fill out the entire form and indicate that you want a **shipping integration** (important). Then press the [Register] button at the bottom of the page.
4. Enter the activation code in the appropriate input field. The code should be sent to the email address you provided during registration.
5. Now you should be logged in! (or, still logged in if you started with step 1). Your user name should appear in the web browsers upper right corner.
6. Change the active account to the new integration, in the top right corner of the browser. It appears there as a menu choice under both your private user account and your registered company.

7. Then go to the "**Settings**" page of your integration:

TEST API: <https://testapi.fraktjakt.se/webshops/change> (Recommended for initial testing!)

PROD API: <https://api.fraktjakt.se/webshops/change>

8. Here you will find the **Consignor ID** and **Consignor Key** that you will soon need to submit API calls to Fraktjakt. You can also change settings that affect the API calls and responses.

## ***Register an integration that is linked to your existing company***

Before your system can communicate with Fraktjakt, you must have a *Consignor ID* and a *Consignor key*.

A company may have several integrations connected to itself and multiple user-accounts.

*NOTE! The instructions below show links to both the TEST API and PROD API environments. Please use the TEST API links during integration work (development and testing). Only use the PROD API links once you have everything working satisfactorily and you are ready for production.*

1. If you already have a Fraktjakt user account, log in to it now.

TEST API: <https://testapi.fraktjakt.se/account/login> (Recommended for initial testing!)

PROD API: <https://api.fraktjakt.se/account/login>

2. If you already have a company registered with Fraktjakt, change the active account to your company. It appears in the browser's upper right corner as a menu selection under your private user account.

3. Then go to the "**Settings**" page of your company:

TEST API: [https://testapi.fraktjakt.se/enter\\_shipper/verify](https://testapi.fraktjakt.se/enter_shipper/verify) (Recommended for initial testing!)

PROD API: [https://api.fraktjakt.se/enter\\_shipper/verify](https://api.fraktjakt.se/enter_shipper/verify)

4. Under the *Administration* section, click on *integrations*.
5. Then click the button "+ **Register integration**".

6. Enter which integration system you are using, and then click the "**Save**" button.
7. Then go to the "**Settings**" page of your integration by clicking *integrations* again in the *Administration* section, and then clicking on the name of the new integration you have just registered.
8. Here you will find the **Consignor ID** and **Consignor Key** that you will soon need to submit API calls to Fraktjakt. You can also change your settings that affect the API calls and responses.

**Important:**

Consignor ID and Consignor key are never the same in the test environment (TEST API) and production environment (PROD API).

Test is a sandbox environment and is in no way connected to production.

It's not possible to purchase shipping services for real using the test environment.

# About the API calls

## ***Generall information about the XML in the API calls***

The API supports both *UTF-8* and *ISO-8859-1* encoding, but we recommend *UTF-8* for all communication with Fraktjakt. If you are using the PHP programming language, it is best to choose *ISO-8859-1*, since *UTF-8* tends to cause problems in PHP programs.

The calls that you send to Fraktjakt over the API are sent as HTTP requests.

All decimals that appear in numeric values must be decimal points – not commas. Example: "3.14"

In this documentation we use indentation to show that an XML element is contained by the element on the previous line of XML.

The XML is sent in as a parameter named `xml` in the URL to Fraktjakt. It has to be URL-encoded. [https://en.wikipedia.org/wiki/Query\\_string#URL\\_encoding](https://en.wikipedia.org/wiki/Query_string#URL_encoding)

A shipment can be specified either by simply entering the goods, with all dimensions stated, or with items without dimensions and with the packages you intend to use with the specified dimensions. The goods are listed in `Commodities` element and packages in `Parcels` element.

If only the goods are specified, Fraktjakt uses an algorithm (bin-packing) to calculate which of the webshop's known packages will be used. Packages are retrieved from package templates.

# Common to all API calls

All calls to Freight Charge API have some data that will always be sent, regardless of which API you call.

1. The `"xml"` parameter must be included in all calls made over the API. This parameter defines the XML data that applies to the call. The XML data should only contain standard XML elements written in lower-case. If the data that you need to send over the API is in an XML-file, you can simply remove all of the line breaks from the file and convert it to a long string of text. Then you use this text as the value of the `"xml"` parameter in your call to Fraktjakt.
2. There is an optional parameter named `"md5_checksum"`. This is the MD5 checksum for the XML data that is defined by the `"xml"` parameter (See <https://en.wikipedia.org/wiki/Md5>). If you define the `"md5_checksum"` parameter in a call to Fraktjakt, the checksum will be used to verify the contents of the `"xml"` parameter. The `"md5_checksum"` parameter is optional, but including it will help to speed up the caching of API calls.
3. Remember to URL-encode the XML-string according to this: [https://en.wikipedia.org/wiki/Query\\_string#URL\\_encoding](https://en.wikipedia.org/wiki/Query_string#URL_encoding)

## Common in all API responses

Fraktjakt always sends back four tags that tell you how the call went. These are Status, Code, warning\_emssage and error\_message.

There are three levels of error:

**0. Ok.** Nothing to complain about in the call and everything went well.

**1. Warning.** Everything is not right in the call, but Fraktjakt has processed the information anyway. For example, the weight may be missing or the street address is too long. The freight has been sent to Fraktjakt and can be supplemented there if necessary.

*When integrating, you should review these messages and try to make sure they disappear, but nothing needs to be shown to the end user.*

**2. Error.** The call to Fraktjakt went wrong. What went wrong appears in the error\_message tag.

If the error is on the client side, you need to fix it. If the fault lies with Fraktjakt, it should be notified to customer service so we can fix it.

## Consignor element

All calls to the API **must** include the consignor element. This element tells Fraktjakt who is making the call (through the Consignor ID and Consignor Key combination) and provides some other information that is needed to process the call. Without a properly supplied consignor element a call will not succeed.

<code>&lt;consignor&gt;</code>	Information about the consignor, i.e. the webshop or other entity that is sending the order.
<code>&lt;id&gt;YOUR_CONSIGNOR_ID&lt;/id&gt;</code>	The consignor's customer ID in Fraktjakt. Data type: INT Required: Yes  Your integrations id in Fraktjakt. Found in the installation tab for the integration in Fraktjakt.
<code>&lt;key&gt;YOUR_CONSIGNOR_KEY&lt;/key&gt;</code>	The consignor's login key in Fraktjakt. Data type: STRING Max chars: 64 Required: Yes  Found in the installation tab for the integration in Fraktjakt.
<code>&lt;currency&gt;EUR&lt;/currency&gt;</code>	<b>Selected</b> Currency in ISO 4217 notation. Data type: STRING Max chars: 3 Required: No Default value: SEK

	<p>Currency for the purchase in ISO 4217.</p> <p>Fraktjakt will return the price results in the specified currency.</p> <p>Used when an integration wants to show prices in other than SEK.</p> <p>However, the freight will be paid in SEK in Fraktjakt.</p> <p>Most existing currencies are supported.</p>
<p><code>&lt;language&gt;[sv   en]&lt;/language&gt;</code></p>	<p>Language in ISO 639-1 notation (6)</p> <p>Data type: STRING Max chars: 2 Required: No Default: sv</p> <p>See Appendix 1 page 101</p> <p>Sets language for the web store's administrator / user. Warnings and Errors are returned in that language. It also means that the user gets that language the next time it logs in.</p>
<p><code>&lt;encoding&gt;[UTF-8   ISO-8859-1]&lt;/encoding&gt;</code></p>	<p>The encoding that applies to text in the returned XML data.</p> <p>Data type: STRING Required: No Default: UTF-8</p> <p>UTF-8 is the default and recommended encoding. ISO-8859-1 is also compatible.</p>
<p><code>&lt;system_name&gt;Prestashop&lt;/system_name&gt;</code></p>	<p>Name of system calling the API.</p> <p>Data type: STRING Max chars: 32 Required: No</p> <p>Woocommerce, Mangento Prestashop etc..</p> <p>This is to make troubleshooting and support easier</p>
<p><code>&lt;system_version&gt;1.2.3&lt;/system_version&gt;</code></p>	<p>Version number of system named in <code>&lt;system_name&gt;</code> element.</p> <p>Data type: STRING Max chars: 16 Required: No</p> <p>This is to make troubleshooting and support easier</p>

<pre>&lt;module_version&gt;1.5.0&lt;/module_version&gt;</pre>	<p>Version number of the Fraktjakt shipping module in use.</p> <p>Data type: STRING  Max chars: 16  Required: No</p>
<pre>&lt;api_version&gt;3.7.0&lt;/api_version&gt;</pre>	<p>Version number of the API integrationen in use.</p> <p>Data type: STRING  Max chars: 16  Required: No</p> <p>Should be the same version as this document!</p> <p>Ensures that the call is always compatible with future versions.</p>
<pre>&lt;/consignor&gt;</pre>	



# Address elements

In order for a shipment to be created, address elements must be provided, such as `<address_to>`, `<address_from>`, etc.

The element content (between the element tags) must be as follows:

<code>&lt;address_*&gt; (&lt;address_from&gt;, &lt;address_to&gt;, etc.)</code>	<p>Address type</p> <p>Data type: STRING Max chars: 25 Required:</p> <p>Replace the "*" in "&lt;address_*", at left, with the address type, e.g. "to", "from", ...</p>
<code>&lt;street_address_1&gt;Gjuterig 9&lt;/street_address_1&gt;</code>	<p>Gatuadress (line 1)</p> <p>Data type: STRING Max chars: 35 (Shippers max) Required: No</p> <p>Strings longer than 35 characters will not generate errors or warnings, but will be truncated.</p> <p>If the shipment is to a 'C/O' address should be in this element. Fraktjakt recognizes the keywords 'C/O' and 'Entry code' and will if possible send that information in the way the shipper want it.</p>
<code>&lt;street_address_2&gt;Vån 7 C&lt;/street_address_2&gt;</code>	<p>Gatuadress (line 2)</p> <p>Data type: STRING Max chars: 35 (Shippers max) Required: No</p> <p>Strings longer than 35 characters will not generate errors or warnings, but will be truncated.</p> <p>Supplementary/further shipping information can be given within parentheses in this element. Ex: (Has unloading agreements) (Leave at the loading platform) (Portkod: 1224)</p>

<pre>&lt;postal_code&gt;55318&lt;/postal_code&gt;</pre>	<p>Postalcode</p> <p>Data type: STRING  Max chars: 16  Required: Yes – except for countries not using postal codes, like Gambia, see Appendix 2, page 102,</p> <p>Postal code is also the primary way of finding the name of the city to which the shipment is going. The &lt;city_name&gt; element will only be used unclear cases.</p>
<pre>&lt;city_name&gt;Jönköping&lt;/city_name&gt;</pre>	<p>City name</p> <p>Data type: STRING  Max chars: 32  Required: Not if the &lt;postal_code&gt; line contains a unique postal code for that city.</p>
<pre>&lt;residential&gt;[0   1]&lt;/residential&gt;</pre>	<p>Specifies whether the address is residential or not (private/residential or commercial)</p> <p>Data type: BOOLEAN  Required: No  Default = 1 (residential)</p>
<pre>&lt;country_code&gt;SE&lt;/country_code&gt;</pre>	<p>Country - See Appendix 2</p> <p>Data type: STRING  Max chars: 2  Required: Yes</p>
<pre>&lt;language&gt;sv&lt;/language&gt;</pre>	<p>Receiver language, see Appendix 1 page 101.</p> <p>Language code: ISO 639-1</p> <p>Data type: STRING  Max chars: 2</p> <p>Can <b>ONLY</b> be given for &lt;address_to&gt;-elements.</p> <p>Specifies which language Fraktjakt should use in email and communication with the receiver.</p> <p>For example, in the email to the recipient when the shipment is shipped and on the Tracking page.</p>
<pre>&lt;/address_*&gt; (&lt;/address_from&gt;, &lt;/address_to&gt;, etc.)</pre>	

## Address management

After an address is used in an API call, Fraktjakt tries to match it to an address in the Address Book, your addresses or contacts' addresses. If an address is found in the address book, the submitted address is supplemented with the information from the address book in terms of alternate name, directions, door code and opening hours.

This can be used, for example, to send in an <address\_from> that goes to an alternative warehouse room. Fraktjakt then complements the shipment information with the premises opening hours and names.

Another example is that if the address of a customer <address\_to> is submitted and it is already in the Address Book, the address is supplemented with directions and entry code for the customer.

# Commodity elements

Used in Query-API, Order API and Shipment API.

Content of shipping. Thus the different items/commodities contained in the packages or on the pallet to be sent. Specified per item. Thus, if three copies of the same item are sent, all are listed in a commodity block with the value 3 in the `<quantity>3</quantity>` element.

If the shipment is to be taxed, more elements are required than if it is only domestic freight. However, it does not hurt to always submit all information.

**Note** that the weight is given as the **total** weight of all the items of the specified type. Thus, you send 3 items weighing 2 kg, 6 kg must be sent in the `<weight>` element.

The length, width and height are given per individual item and centimeter. Not as the total measure.

In some way, Fraktjakt must know how heavy and how large the freight is to be sought. During the implementation, you should consider what information you have.

- Either you enter the contents of the freight in the `<commodities>` element, with the total weight and preferably all other dimensions given, and let Fraktjakt calculate the packages to be sent based selected Packing Method and the existing and active Package Templates.
- Or, enter the packages to be sent directly in the `<parcels>` element.  
**Note!** If Compability-mode is activated in the integration's settings, *one* parcel will be generated with the Standard Parcel's measures.
- You can enter both commodities and parcels. The packages and its dimensions are then taken from the `<parcels>` element.
- For the goods and the packages only the weight is needed, but for more correct information, all measurements (length, width and height) of each item are recommended. Unless the volume dimensions are submitted, only Standard Package selected in Fraktjakt can be used.

Fraktjakt recommends that all measurements and as many data as possible be specified on each call. Otherwise, the freight has to be completed in Fraktjakt, and it is both slower and prevents automation of freight purchases.

<code>&lt;commodity&gt;</code>	A single commodity type.
<code>&lt;name&gt;shoes&lt;/name&gt;</code>	The name of the commodity type.  Data type: STRING Max chars: 64 Required: Yes  The value should be understandable in the receiving

	<p>country.</p> <p><b>Displayed on the Packing List.</b></p>
<p>&lt;quantity&gt;3&lt;/quantity&gt;</p>	<p>The quantity of the commodity in the unit specified in &lt;quantity_units&gt;</p> <p>Data Type: INTEGER  Default value: 1  Required: NO - Set to 1 if the value is missing or is 0.</p> <p><b>Displayed on the Packing List.</b></p>
<p>&lt;taric&gt;6403999600&lt;/taric&gt;</p> <p>(see <a href="http://tulltaxan.tullverket.se/#!/taric/nomenclature/sbt">http://tulltaxan.tullverket.se/#!/taric/nomenclature/sbt</a>)</p>	<p>The harmonized customs code for this commodity type (also called TARIC code).</p> <p>Data type: INT</p> <p><b>Required: No, but when you include this element in international shipping orders, the shipments will normally get through customs much faster.</b></p>
<p>&lt;quantity_units&gt;EA&lt;/quantity_units&gt;</p> <p>Allowed values:</p> <p>EA = each  DZ = dozens  L = liter  ML = milliliter  KG = kilogram</p> <p>Default is EA (each) if no or invalid value is submitted.</p>	<p>The unit of measure for this commodity type.</p> <p>Data type: STRING  Max chars: 2</p> <p><b>Required: No, but it should be included in international shipping orders.</b></p> <p>Default: EA (each)</p> <p>Allowed values:  EA = each  DZ = dozens  L = liter  ML = milliliter  KG = kilogram</p> <p>Only the units 'EA' and 'DZ' can be specified if an advanced bin-packing algorithm is to be used.</p> <p><b>Displayed on the Packing List.</b></p>
<p>&lt;description&gt;<b>Black leather shoes</b>&lt;/description&gt;</p> <p><i>(Attention! 15 characters minimum. The value should be understandable in the receiving country.)</i></p>	<p>Description of the commodity type.</p> <p>Data type: STRING  Min chars: 15  Max chars: 128</p> <p>Mandatory: For overseas shipments, it should be stated. Otherwise, it must be specified in</p>

	<p>Fraktjakt.</p> <p>The value shall be understood in the recipient country.</p>
<pre>&lt;country_of_manufacture&gt;US&lt;/country_of_manufacture&gt;</pre>	<p>Country code according to the ISO 3166-1 alpha-2 (5) standard.</p> <p>Data type: STRING Max chars: 2 Default: SE</p> <p>Required: No, but can be given in overseas shipments.</p> <p>See Appendix 2 page 102 for the codes.</p>
<pre>&lt;weight&gt;13.1&lt;/weight&gt;</pre>	<p>The cumulative weight in kg of all items of this type in the shipment.</p> <p>The least needed to be stated as a measure unless the &lt;parcel&gt; elements are specified.</p> <p>Data type: FLOAT</p> <p>Required: NO but international shipments will need it.</p>
<pre>&lt;length&gt;40&lt;/length&gt;</pre>	<p>The length of one item of the commodity.</p> <p>Specified in centimeters (cm)</p> <p>Data type: FLOAT</p> <p>Required: No, but it is required for advanced bin packing.</p>
<pre>&lt;width&gt;30&lt;/width&gt;</pre>	<p>The width of one item of the commodity.</p> <p>Specified in centimeters (cm)</p> <p>Data type: FLOAT</p> <p>Required: No, but it is required for advanced bin packing.</p>
<pre>&lt;height&gt;40&lt;/height&gt;</pre>	<p>The height of one item of the commodity.</p> <p>Specified in centimeters (cm)</p> <p>Data type: FLOAT</p>

	<p>Required: No, but it is required for advanced bin packing.</p> <p><b>Displayed on the Packing List.</b></p>
<unit_price>99.99</unit_price>	<p>The value per unit of this commodity type. It is used in customs and for complaint.</p> <p>Must be specified in SKR.</p> <p>Data type: FLOAT Required: Yes when the shipment is international</p>
<currency>USD</currency>	<p>Currency for the value in ISO 4217 standard.</p> <p>Data type: STRING Max chars: 3 Mandatory: No Default value: SEK</p> <p>Fraktjakt will interpretate &lt;unit_price&gt; in this currency. The value will hoverer always be displayed in SEK in Fraktjakt.</p> <p>Most existing currencies are supported.</p>
<in_own_parcel>[0   1]</in_own_parcel>	<p>Indicates if the item has its own parcel and should not be added to another parcel.</p> <p>Data type: BOOLEAN Required: No Default = 0 (Shared parcel)</p>
<article_number>K19-53</article_number>	<p>Article number. Used in the packing list.</p> <p>The SKU (Stock Keeping Unit) can be specified here if used.</p> <p>Data type: STRING Max chars: 64 Required: No</p>
<shelf_position>Top Left</shelf_position>	<p>Where the commodity can be found when packing it.</p> <p>Data type: STRING Max chars: 64 Required: No</p>
</commodity>	

# Fraktjakt Query API

The API calls that are used for sending queries about shipping services to Fraktjakt are collectively called the Fraktjakt Query API. In this document we will simply use the term "Query API".

You can also get information about the nearest agent.

Your system can use the Query API to retrieve information about the best, cheapest and fastest shipping alternatives. This is the same type of information that web users find when they perform searches at <https://www.fraktjakt.se/>; however, the Query API is faster.

## ***XML for Query API calls***

In order to search for shipping services, your system must send a definition of the required shipping services to the Query API. The definition that is sent may comprise one or more parcels and the address that they need to be shipped to. The definition must only have one sender address and one receiver address, regardless of how many parcels are included.

The packages to be sent can either be sent in `<parcels>` element or calculated by Fraktjakt based on the goods to be shipped and listed in the `<commodities>` element.

You can choose to only submit the `<commodities>` element, only the `<parcels>` element or both, see note 3.

After the query, the webshops's customer or user is expected to choose shipping product for the shipment. The selection is submitted with Order API Call Type 1, page 55.

Or, the shipment is completed via the link returned in the `<access_link>` element.

If the shipping price is distance-based, the shipping address that you entered on your integration configuration page at Fraktjakt will be used by default.

The Query API uses the following URI:s:

TEST API environment: [https://testapi.fraktjakt.se/fraktjakt/query\\_xml](https://testapi.fraktjakt.se/fraktjakt/query_xml)

PROD API environment: [https://api.fraktjakt.se/fraktjakt/query\\_xml](https://api.fraktjakt.se/fraktjakt/query_xml)

If you want to get the price a specific shipping service the `<shipping_product_id>` element can be used. You can retrieve the ID-number from an earlier search in the `<id>` element under the `<shipping_product>` element or via [https://www.fraktjakt.se/shipping\\_products/xml\\_list](https://www.fraktjakt.se/shipping_products/xml_list).

You can configure Fraktjakt to send `<arrival_time>` as the expected shipping time in days or as the expected time of arrival. This setting is done on your configuration page at Fraktjakt.se. The arrival time is calculated based on the shipping product's normal shipping time, the available days for pick-up that you have defined in your settings, and the shipper's pick-up schedule.



The result is sorted by the setting for the web store, or by the `<price_sort>` element.

*Note that if you within an hour send a query to the Query API that is an exact duplicate of a previous query, the Query API will return the cached results from the first query.*

**When the response is more important than precision.**

You can also do a quick search that we cache locally. It will provide an estimate shipping price quickly when your customers do not need the exact final price. This is also useful when you don't have the receiver address yet.

To do this you put the same address in the receiver address field as in the sender field. This will tell Fraktjakt to make a quick search.

**NOTE! Do not create an order from this search.** You need to do a new search when you want to create the order and buy the shipment. Otherwise the incorrect address will be sent to the delivery company. Then it could be suitable to set the search for a specific `shipping_product_id`.

Other elements used to provide faster response times are: `<no_agents>`, `<no_prices>` and `<agents_in>`.

XML element tag and example of contents	Description
<code>&lt;?xml version="1.0" encoding="UTF-8"?&gt;</code>	XML header
- <code>&lt;shipment&gt;</code>	This is the document element, i.e. the root element of the XML data that describes a shipment that is being searched for.
- <code>&lt;consignor&gt;</code>	Information about who's making the call.
<b>See Consignor-element on page 22</b>	
<code>&lt;/consignor&gt;</code>	
- <code>&lt;price_sort&gt;[0   1]&lt;/price_sort&gt;</code>	To override the settings for how searches are to be sorted. 1 if the search is to be sorted by the cheapest price. If 0 the search is sorted on delivery time instead.  Datatyp: BOOLEAN Obligatoriskt: No  Default = The settings for the integration
- <code>&lt;value&gt;10&lt;/value&gt;</code>	The cumulative value of all items in the shipment.  If the total given value for the commodities is higher than this value,

	<p>that value will be used instead.</p> <p>Use this field unless the value of the goods is shown in commodities. Otherwise it is not needed.</p> <p>Used primarily to know whether free shipping should be used in the answer.</p> <p>Data type: FLOAT Required: No</p>
- <currency>USD</currency>	<p><i>Currency for the value in ISO 4217 standard</i></p> <p>Data type: STRING Max chars: 3 Mandatory: No</p> <p>Default value: SEK</p> <p>Mostr existing currencies are supported.</p>
- <express>[0   1]</express>	<p>Flag for limiting the search to only find express shipping alternatives.</p> <p>Data type: BOOLEAN Required: No</p> <p>Default = 0 (Search for both express and other types of shipping services.)</p>
- <pickup>[0   1]</pickup>	<p>Flag for limiting the search to only find shipping alternatives with pickup service.</p> <p>Data type: BOOLEAN Required: No</p> <p>Default = 0 (Do not limit the search.)</p>
- <dropoff>[0   1]</dropoff>	<p>Flag for limiting the search to only find shipping alternatives with dropoff service.</p> <p>Data type: BOOLEAN Required: No</p> <p>Default = 0 (Do not limit the search.)</p>
- <green>[0   1]</green>	<p>Flag for limiting the search to only find shipping alternatives that have some type of environmental certification.</p> <p>Data type: BOOLEAN Required: No</p> <p>Default = 0 (Do not limit the search.)</p>

<p>- &lt;quality&gt;<b>[0   1]</b>&lt;/quality&gt;</p>	<p>Flag for limiting the search to only find shipping alternatives that have some type of quality certification.</p> <p>Data type: BOOLEAN Required: No</p> <p>Default = 0 (Do not limit the search.)</p>
<p>- &lt;time_guarantee&gt;<b>[0   1]</b>&lt;/time_guarantee&gt;</p>	<p>Flag for limiting the search to only find shipping alternatives that have guaranteed delivery time.</p> <p>Data type: BOOLEAN Required: No</p> <p>Default = 0 (Do not limit the search.)</p>
<p>- &lt;cold&gt;<b>[0   1]</b>&lt;/cold&gt;</p>	<p>Flag to indicate whether the shipment contains items that require refrigeration. (3)</p> <p>Data type: BOOLEAN Required: No</p> <p>Default = 0 (refrigeration not required)</p>
<p>- &lt;frozen&gt;<b>[0   1]</b>&lt;/frozen&gt;</p>	<p>Flag to indicate whether the shipment contains items that require frozen transport. (3)</p> <p>Data type: BOOLEAN Required: No</p> <p>Default = 0 (frozen transport not required)</p>
<p>- &lt;shipping_product_id&gt;<b>30</b>&lt;/shipping_product_id&gt;</p>	<p>Include this element if you only want to find the price for a specific shipping product.</p> <p>The ID is found from the call with the product list. See page 96.</p> <p>NB: This element can be useful if you want to fill in a price using AJAX.</p> <p>Data type: INT Required: No</p>
<p>- &lt;no_agents&gt;<b>[0   1]</b>&lt;/no_agents&gt;</p>	<p>If you want to know the nearest agent or not. If you select to not show them you will receive a significantly faster reply, but give less service to your customers.</p> <p>Data type: BOOLEAN Required: No</p> <p>Default = 0 (show agents)</p>

<p>- &lt;no_prices&gt;<b>[0   1]</b>&lt;/no_prices&gt;</p>	<p>No prices are shown! Gives a much faster result, but are only showing if a service is available or not to a given address. Can be combined with &lt;no_agents&gt;.</p> <p>Use it if only availability is of interest.</p> <p>Data type: BOOLEAN Required: No</p> <p>Default = 0 (prices are shown)</p>
<p>- &lt;agents_in&gt;<b>[0   1]</b>&lt;/agents_in&gt;</p>	<p>If you want to show the nearest agent for the sender or not. If you select to show it, the reply will be much slower.</p> <p>Data type: BOOLEAN Required: No</p> <p>Default = 0 (don't show agents)</p>
<p>- &lt;shipper_info&gt;<b>[0   1]</b>&lt;/shipper_info&gt;</p>	<p>If you want extra information about the shippers. The reply will then contain the additional element &lt;shipper&gt; with its sub element's <i>id</i>, <i>name</i> and <i>logo_url</i>.</p> <p>Data type: BOOLEAN Required: No</p> <p>Default = 0 (no additional info)</p>
<p>- &lt;parcels&gt;</p>	<p>The parcels that the shipment comprises, if they are known.</p> <p>See Note 3.</p> <p>See Note 4.</p>
<p>- &lt;parcel&gt;</p>	<p>Data pertaining to a parcel.</p>
<p>&lt;weight&gt;<b>3.2</b>&lt;/weight&gt;</p>	<p>The parcel's weight in kg.</p> <p>Data type: FLOAT Required: Yes</p>
<p>&lt;length&gt;<b>35</b>&lt;/length&gt;</p>	<p>The parcel's length in cm.</p> <p>The length is the longest side of the parcel.</p> <p>Data type: FLOAT Required: No</p>
<p>&lt;width&gt;<b>23.5</b>&lt;/width&gt;</p>	<p>The parcel's width in cm.</p> <p>The width is the second longest side of</p>

	the parcel. Data type: FLOAT Required: No
<code>&lt;height&gt;15&lt;/height&gt;</code>	The parcel's height in cm. Data type: FLOAT Required: No
<code>&lt;/parcel&gt;</code>	
<code>&lt;/parcels&gt;</code>	
- <code>&lt;address_to&gt;</code>	Note that <code>&lt;language&gt;</code> can be used.
Se address-element on page ?	
<code>&lt;/address_to&gt;</code>	
- <code>&lt;address_from&gt;</code>	Sender address. If this element is missing the default shipping address entered in Fraktjakt will be used. Required: No (see note nr.1)
<b>See Address-element på on page ?</b>	
<code>&lt;/address_from&gt;</code>	
<code>&lt;/shipment&gt;</code>	

## Notes:

1. `<address_from>` normally does not need to be included, since the shipping address that you have entered on your settings page at Fraktjakt.se should apply to all of the shipments that you order via Fraktjakt.

The Query API supports addresses anywhere on the globe; however, Fraktjakt does only handle shipments that is to or from Sweden.

If you do not ship the freight from an agent, the address should be where the package is picked up! Thus, not the sender address, but the physical location from which the package is sent.

2. If the elements, `<cold>` and `<frozen>`, are omitted from your XML, or if they do not contain the value "1" or "true", no refrigerated or frozen shipping alternatives will be included in the search results that the Query API returns. Furthermore, refrigerated and frozen shipping alternatives are only shown when these elements contain "1" or "true". It is

thus not possible to get a search result that includes both refrigerated/frozen and non-refrigerated shipping alternatives in the same call to the Query API.

3. In some way, Fraktjakt must know how heavy and how big the shipment is that is queried for. When implementing this API, you should ask yourself, do I know which packages I'm going to use, or do I know what the goods I'm going to send look like? From there, select which elements to use.
  - Either enter the contents of the freight in the `<commodities>` element, with the dimensions specified, and let Fraktjakt calculate the packages to be sent based on the active Package Templates.
  - Or, enter the packages to be sent directly in the `<parcels>` element. (If Compatibility-mode is activated, *one* parcel will be generated with the Standard Parcel's measures).
  - You can enter both commodities and parcels. The packages and its dimensions are then taken from the parcels.
  - For the commodities and packages only the weight needs to be stated, but for more accurate data, all the dimensions (length, width and height) of each commodity and the packages, if you send in which packages to use) are recommended. If the volume measures are not submitted, only the standard package selected in Fraktjakt can be used.
  - If neither `<parcels>` element or the complete dimensions of the commodities are listed, all the goods will assumed be fit in the Standard Package specified in the settings in Fraktjakt for the integration. If you have not specified a Standard Package, the query will fail! Fraktjakt simply does not have the information needed to calculate the shipping price.

Fraktjakt recommends that all measurements and as much data as possible be specified on each call. Otherwise, the shipment needs to be completed in Fraktjakt, and that it is both slower and prevent automation of freight purchases.

4. If you specify dimensions 120 or 60 on length and 80 on width, Fraktjakt interprets the input package as a pallet or half pallet and searches for shipping products for pallets. If the height is below 125 cm, the pallet will be stackable. Higher heights provide non-stackable pallets.

## **Example 1 - Regular shipping query**

A regular search delivers a response with one or more shipping alternatives. It is thought that you want to send five Rubric's cube.

This XML should work if you only replace the consignor id and key to your own.

See Order API call type1, example 1 page Fel: Det gick inte att hitta referenskällan for how the response should be handled.

```
<?xml version="1.0" encoding="UTF-8"?>
<shipment xmlns:xsi="https://www.w3.org/2001/XMLSchema-instance">
  <value>199.50</value>
  <shipper_info>1</shipper_info>
  <consignor>
    <id>YOUR_CONSIGNOR_ID</id>
    <key>YOUR_CONSIGNOR_KEY</key>
  </consignor>
</shipment>
```

```

    <currency>SEK</currency>
    <language>en</language>
    <encoding>UTF-8</encoding>
    <api_version>3.7.0</api_version>
  </consignor>
  <no_agents>1</no_agents>
  <commodities>
    <commodity>
      <name>Rubriks kub</name>
      <description>Ett kubpussel i plast</description>
      <quantity>5</quantity>
      <unit_price>35.00</unit_price>
      <currency>DKK</currency>
      <weight>1</weight>
      <length>7</length>
      <width>7</width>
      <height>7</height>
      <country_of_manufacture>DK</country_of_manufacture>
    </commodity>
  </commodities>
  <address_to>
    <street_address_1>Hedenstorp 10</street_address_1>
    <street_address_2></street_address_2>
    <postal_code>33292</postal_code>
    <city_name>Gislaved</city_name>
    <residential>1</residential>
    <country_code>SE</country_code>
    <language>sv</language>
  </address_to>
</shipment>

```

## ***Example 2 - Regular shipping query with given parcels***

A regular search delivers a response with one or more shipping alternatives.

This does not specify what you want to send but the size of the package you want to send

This XML should work if you only replace the consignor id and key to your own.

```

<?xml version="1.0" encoding="UTF-8"?>
<shipment xmlns:xsi="http://www.w3.org/2001/XMLSchema-instance">
  <value>199.50</value>
  <shipper_info>1</shipper_info>
  <consignor>
    <id>YOUR_CONSIGNOR_ID</id>
    <key>YOUR_CONSIGNOR_KEY</key>
    <currency>SEK</currency>
    <language>en</language>
    <encoding>UTF-8</encoding>
    <api_version>3.7.0</api_version>
  </consignor>
  <no_agents>1</no_agents>
  <parcels>
    <parcel>
      <weight>2.8</weight>
      <length>30</length>
      <width>20</width>
      <height>10</height>
    </parcel>
  </parcels>
  <address_to>

```

```

    <street_address_1>Hedenstorp 10</street_address_1>
    <street_address_2></street_address_2>
    <postal_code>33292</postal_code>
    <city_name>Gislaved</city_name>
    <residential>1</residential>
    <country_code>SE</country_code>
    <language>sv</language>
  </address_to>
</shipment>

```

## Example 3 - Regular shipping query with multiple packages

One wants to ship three parcels with different dimensions.

This XML should work if you only replace the consignor id and key to your own.

The customer can have free shipping, so the value is given in the XML.

```

<?xml version="1.0" encoding="UTF-8"?>
<shipment xmlns:xsi="http://www.w3.org/2001/XMLSchema-instance">
  <value>199.50</value>
  <consignor>
    <id>YOUR_CONSIGNOR_ID</id>
    <key>YOUR_CONSIGNOR_KEY</key>
    <currency>SEK</currency>
    <language>en</language>
    <encoding>UTF-8</encoding>
    <api_version>3.7.0</api_version>
  </consignor>
  <no_agents>1</no_agents>
  <value>150</value>
  <currency>EUR</currency>
  <parcels>
    <parcel>
      <weight>1.2</weight>
      <length>20</length>
      <width>15</width>
      <height>10</height>
    </parcel>
    <parcel>
      <weight>2.8</weight>
      <length>30</length>
      <width>20</width>
      <height>10</height>
    </parcel>
    <parcel>
      <weight>7</weight>
      <length>40</length>
      <width>30</width>
      <height>20</height>
    </parcel>
  </parcels>
  <address_to>
    <street_address_1>Hedenstorp 10</street_address_1>
    <street_address_2></street_address_2>
    <postal_code>33292</postal_code>
    <city_name>Gislaved</city_name>
    <residential>1</residential>
    <country_code>SE</country_code>
    <language>sv</language>
  </address_to>
</shipment>

```



## Example 4 - Search for a specific shipping service

(enter 'shipping\_product\_id')

One want to send four used tires with Bussgods Sverigefrakt to Gisslaved. They are not interested in which agent they are sent to.

```
<?xml version="1.0" encoding="UTF-8"?>
<shipment xmlns:xsi="https://www.w3.org/2001/XMLSchema-instance">
  <value>199.50</value>
  <consignor>
    <id>YOUR_CONSIGNOR_ID</id>
    <key>YOUR_CONSIGNOR_KEY</key>
    <currency>SEK</currency>
    <language>en</language>
    <encoding>UTF-8</encoding>
    <api_version>3.7.0</api_version>
  </consignor>
  <no_agents>1</no_agents>
  <shipping_product_id>25</shipping_product_id>
  <commodities>
    <commodity>
      <name>Tire</name>
      <description>Used tires</description>
      <quantity>4</quantity>
      <unit_price>650</unit_price>
      <weight>25</weight>
      <length>35</length>
      <width>35</width>
      <height>10</height>
    </commodity>
  </commodities>
  <address_to>
    <street_address_1>Hedenstorp 10</street_address_1>
    <street_address_2></street_address_2>
    <postal_code>33292</postal_code>
    <city_name>Gisslaved</city_name>
    <residential>1</residential>
    <country_code>SE</country_code>
    <language>sv</language>
  </address_to>
</shipment>
```

## Example 5 - Regular FOREIGN shipping query

A regular search delivers a response with one or more shipping alternatives.

They want to send two Finnish men's shoes to the United States in a package of 30x20x10 size.

This XML should work if you only replace the consignor id and key to your own.

```
<?xml version="1.0" encoding="UTF-8"?>
<shipment xmlns:xsi="https://www.w3.org/2001/XMLSchema-instance">
  <value>199.50</value>
  <consignor>
    <id>YOUR_CONSIGNOR_ID</id>
    <key>YOUR_CONSIGNOR_KEY</key>
    <currency>USD</currency>
```

```
<language>en</language>
<encoding>UTF-8</encoding>
<api_version>3.7.0</api_version>
</consignor>
<commodities>
  <commodity>
    <name>Shoes</name>
    <quantity>2</quantity>
    <taric>6403999600</taric>
    <quantity_units>EA</quantity_units>
    <description>Black leather shoes with laces</description>
    <country_of_manufacture>FI</country_of_manufacture>
    <currency>EUR</currency>
    <weight>2.8</weight>
    <length>30</length>
    <width>13</width>
    <height>8</height>
    <unit_price>899.95</unit_price>
  </commodity>
</commodities>
<address_to>
  <street_address_1>101 Main Street</street_address_1>
  <street_address_2></street_address_2>
  <postal_code>12345</postal_code>
  <city_name>Schenectady</city_name>
  <residential>1</residential>
  <country_code>US</country_code>
  <language>en</language>
</address_to>
</shipment>
```

# XML for Query API responses

XML element tag and example of contents	Description
<code>&lt;?xml version="1.0" encoding="UTF-8"?&gt;</code>	XML header
- <code>&lt;shipment&gt;</code>	This is the document element, i.e. the root element of the XML data that describes a shipment that is being searched for.
<code>&lt;status&gt;ok&lt;/status&gt;</code>	Status of API call  <u>ok</u> = API call succeeded.  <u>warning</u> = API call succeeded with warnings.  <u>error</u> = API call failed.  <i>Sent in response only for API versions 3.1.0 or greater.</i>
<code>&lt;code&gt;1&lt;/code&gt;</code>	Error code  0 = OK  1 = Warning  2 = Error
<code>&lt;warning_message&gt;You need to input all measurements&lt;/warning_message&gt;</code>	Warning message with information that may be useful, especially when testing your integration.  Data type: STRING Max chars: 500 Required: Yes
<code>&lt;error_message&gt;&lt;/error_message&gt;</code>	Error message.  Data type: STRING Max chars: 500 Required: Yes
<code>&lt;currency&gt;SEK&lt;/currency&gt;</code>	Currency.  Data type: STRING Max chars: 3 Required: Yes
<code>&lt;id&gt;67887&lt;/id&gt;</code>	Fraktjakt's SHIPMENT_ID. This is used in all future references to this particular query result.

	Data type: INTEGER Required: Yes
<access_code>ABC12345</access_code>	A code for accessing and managing the shipment without previously being logged in. See note 1.
<access_link> <a href="https://www.fraktjakt.se/shipments/show/163221?access_code=b6dfc12fc04ec98132da2eb1c1739272cc646ed9">https://www.fraktjakt.se/shipments/show/163221?access_code=b6dfc12fc04ec98132da2eb1c1739272cc646ed9</a> </access_link>	A link to the shipment using the above SHIPMENT_ID and ACCESS_CODE.  Data type: STRING Required: Yes
<tracking_code>ABC12345</tracking_code>	A code to track this shipment without previously being logged in. See note 2.
<tracking_link> <a href="https://www.fraktjakt.se/trace/shipment/b6dfc12fc04">https://www.fraktjakt.se/trace/shipment/b6dfc12fc04</a> </tracking_link>	A link to track the shipment using the above TRACKING_CODE  Data type: STRING Required: Yes
- <shipping_products>	The query result is presented as an XML array of shipping products, sorted in the order defined on your configuration page at Fraktjakt.se.
- <shipping_product>	An individual shipping product, i.e. a service that matches the search criteria that were sent in the query.  See page 96 for the shipping services currently possible to get in the response.
<id>15</id>	The shipping product's ID in i Fraktjakt. This can be used for purchasing the shipping product.  Data type: INTEGER Required: Yes
<name>Privat</name>	The name of the shipping product.  <b>The name presented on the service can be changed in the integration settings in Fraktjakt.</b>  Data type: STRING Max tecken: 35 Obligatorisk: Ja
<description>Posten AB Postpaket</description>	Description of the shipping product. This can be presented directly to your customers.

	<p>Data type: STRING Max chars: 35 Required: Yes</p>
<p>&lt;arrival_time&gt;One to three days, before 10 am guaranteed&lt;/arrival_time&gt;</p>	<p>The arrival time; either the number of days from now or the expected date/time of arrival.</p> <p>Data type: STRING Max chars: 64 Required: Yes, but may be empty</p>
<p>&lt;price&gt;159.50&lt;/price&gt;</p>	<p>The shipping product's total price without VAT.</p> <p><b>In the requested currency.</b></p> <p>Data type: FLOAT Required: Yes</p>
<p>&lt;tax_class&gt;25.00&lt;/tax_class&gt;</p>	<p>The VAT percentage that applies to this shipping product.</p> <p>Data type: FLOAT Required: Yes</p>
<p>&lt;to_agent&gt;1&lt;/to_agent&gt;</p>	<p>If the product is delivered by an agent or not.</p> <p>Data type: BOOLEAN</p> <p>Required: Yes</p> <p>0 = false. Selivery directly to the customer.</p> <p>1 = true. Delivery to an agent.</p> <p>Only sent in the reply for API-version 3.8.0 or later.</p>
<p>&lt;agent_info&gt;Cityterminalen Stockholm apx 2 km in Stockholm&lt;/agent_info&gt;</p>	<p>The shipping agent location that is closest to the receiver's address (does not apply to direct delivery shipping products).</p> <p><b>If Fraktjakt is missing information about nearest agent it is announced with the text "Agent information is missing".</b></p> <p>Data type: STRING Max chars: 72 Required: Yes, but may be empty</p>
<p>&lt;agent_link&gt;</p> <p><a href="https://www.fraktjakt.se/agents/search_closest/377483?">https://www.fraktjakt.se/agents/search_closest/377483?</a></p>	<p>A link to a map that shows where the shipping agent defined in</p>

<pre> type=9&amp;shipper=4  &lt;/agent_link&gt; </pre>	<p>&lt;agent_info&gt; is located.</p> <p>Data type: STRING Max chars: 256</p> <p>Required: Yes, but may be empty</p>
<pre> &lt;agent_in_info&gt;Fedex Jönköping apx 1 km in Jönköping&lt;/agent_info&gt; </pre>	<p>The shipping agent location that is closest to the sender's address (does not apply to shipping products with pickup).</p> <p>Is only sent if agents_in is true.</p> <p>Data type: STRING Max chars: 72 Required: No</p>
<pre> &lt;agent_in_link&gt;  <a href="https://www.fraktjakt.se/agents/search_closest/377482?type=8&amp;shipper=4">https://www.fraktjakt.se/agents/search_closest/377482?type=8&amp;shipper=4</a>  &lt;/agent_in_link&gt; </pre>	<p>A link to a map that shows where the shipping agent defined in &lt;agent_in_info&gt; is located.</p> <p>Is only sent if agents_in is true.</p> <p>Data type: STRING Max chars: 256 Required: No</p>
<pre> &lt;shipper&gt; </pre>	<p>The shipper delivering the shipping product.</p> <p>This element (and its sub elements) is only created if &lt;shipper_info&gt; has been sent in the initial API call with the value "1".</p> <p>Required: No</p>
<pre> &lt;id&gt;4&lt;/id&gt; </pre>	<p>The shipper's ID in Fraktjakt.</p> <p>Data type: INTEGER Required: No</p>
<pre> &lt;name&gt;Bussgods&lt;/name&gt; </pre>	<p>The shipper's name.</p> <p>Data type: STRING Max chars: 35 Required: No</p>
<pre> &lt;logo_url&gt;  <a href="https://www.fraktjakt.se/images/shippers/4.png">https://www.fraktjakt.se/images/shippers/4.png</a>  &lt;/logo_url&gt; </pre>	<p>The shipper image logo url. In case you want to present it in the search result.</p> <p>Data type: STRING Max chars: 72 Required: No</p>
<pre> &lt;/shipper&gt; </pre>	

<code>&lt;/shipping_product&gt;</code>	
<code>&lt;/shipping_products&gt;</code>	
<code>&lt;/shipment&gt;</code>	

**Notes:**

1. Available if the `<api_version>` element is larger than 2.9.2. Put the code in the link:  
[https://www.fraktjakt.se/shipments/show/SHIPMENT\\_ID&access\\_code=ACCESS\\_COD](https://www.fraktjakt.se/shipments/show/SHIPMENT_ID&access_code=ACCESS_COD)  
For more information about the link, see page 86.
2. Available if the `<api_version>` element is larger than 3.6.0 Put the code in the link:  
[https://www.fraktjakt.se/trace/shipment/TRACKING\\_CODE](https://www.fraktjakt.se/trace/shipment/TRACKING_CODE)  
For more information about the link, see page 86.

# Requery API (cached shipment search)

If you've previously called Query API and got a response containing a shipment\_id you can call the Requery API to get a cached response which is much quicker.

## XML for Requery API calls

Use the following URI to get a cached response from Fraktjakt via the Requery API:

[https://testapi.fraktjakt.s/fraktjakt/requery\\_xml](https://testapi.fraktjakt.s/fraktjakt/requery_xml) (TEST API – test environment)

[https://api.fraktjakt.s/fraktjakt/requery\\_xml](https://api.fraktjakt.s/fraktjakt/requery_xml) (PROD API – live / production environment)

The XML that you send to the Requery API should include all of the standard fields that were sent to the Query API, plus a shipment\_id value that the Query API returned.

You can configure Fraktjakt to send <arrival\_time> as the expected shipping time in days or as the expected time of arrival. This setting is done on your configuration page at Fraktjakt.se. The arrival time is calculated based on the shipping product's normal shipping time, the available days for pick-up that you have defined in your settings, and the shipper's pick-up schedule.

XML element tag and example of contents	Description
<?xml version="1.0" encoding="UTF-8"?>	XML header
- <shipment>	This is the document element, i.e. the root element of the XML data that describes a shipment that is being searched for.
- <value>10.50</value>	Value of content in the shipment.  Data type: FLOAT Required: No
- <shipper_info>[0   1]</shipper_info>	Include this element if you want to receive extra information about the shipping providers in the response. The response will then contain a <shipper> element containing id, name and logo_url elements.



	Data type: BOOLEAN Required: No Default = 0 (No extra info)
- <consignor>	Information about who's making the call.
<b>See Consignor-element on page 22</b>	
</consignor>	
<shipment_id>167887</shipment_id>	Fraktjakt's shipment ID. This is used in all future references to this particular query result.  Data type: INTEGER Required: Yes
</shipment>	

## Example

```
<?xml version="1.0" encoding="UTF-8"?>
<shipment>
  <value>10</value>
  <consignor>
    <id>YOUR_CONSIGNOR_ID</id>
    <key>YOUR_CONSIGNOR_KEY</key>
    <currency>SEK</currency>
    <language>en</language>
    <encoding>UTF-8</encoding>
    <api_version>3.7.0</api_version>
  </consignor>
  <shipment_id>167887</shipment_id>
</shipment>
```

## Response

XML element tag and example of contents	Description
<?xml version='1.0' encoding='UTF-8'?>	
- <shipment>	This is the document element, i.e. the root element of the XML data that describes a shipment that is being

	searched for.
<code>&lt;status&gt;ok&lt;/status&gt;</code>	Status of API call  <u>ok</u> = API call succeeded.  <u>warning</u> = API call succeeded with warnings.  <u>error</u> = API call failed.  <i>Sent in response only for API versions 3.1.0 or greater.</i>
<code>&lt;code&gt;1&lt;/code&gt;</code>	Error code  0 = OK 1 = Warning 2 = Error
<code>&lt;warning_message&gt;Du behöver ange alla mått&lt;/warning_message&gt;</code>	Warning message with information that may be useful, especially when testing your integration.  Data type: STRING Max chars: 500 Required: Yes
<code>&lt;error_message&gt;&lt;/error_message&gt;</code>	Error message.  Data type: STRING Max chars: 500 Required: Yes
<code>&lt;currency&gt;SEK&lt;/currency&gt;</code>	Currency.  Data type: STRING Max chars: 3 Required: Yes
<code>&lt;id&gt;67887&lt;/id&gt;</code>	Fraktjakt's SHIPMENT_ID. This is used in all future references to this particular query result.  Data type: INTEGER Required: Yes
<code>&lt;access_code&gt;ABC12345&lt;/access_code&gt;</code>	A code for accessing and managing the shipment without previously being logged in. See note 1.
<code>&lt;access_link&gt;</code>  <a href="https://www.fraktjakt.se/shipments/show/163221?access_code=b6dfc12fc04ec98132da2eb1c1739272cc646ed9">https://www.fraktjakt.se/shipments/show/163221?access_code=b6dfc12fc04ec98132da2eb1c1739272cc646ed9</a>	A link to the shipment using the above SHIPMENT_ID and ACCESS_CODE.  Data type: STRING

<code>&lt;/access_link&gt;</code>	Required: Yes
<code>&lt;tracking_code&gt;ABC12345&lt;/tracking_code&gt;</code>	A code to track this shipment without previously being logged in. See note 2.
<code>&lt;tracking_link&gt;</code> <a href="https://www.fraktjakt.se/trace/shipment/b6dfc12fc04">https://www.fraktjakt.se/trace/shipment/b6dfc12fc04</a> <code>&lt;/tracking_link&gt;</code>	A link to track the shipment using the above TRACKING_CODE  Data type: STRING Required: Yes
- <code>&lt;shipping_products&gt;</code>	The query result is presented as an XML array of shipping products, sorted in the order defined on your configuration page at Fraktjakt.se.
- <code>&lt;shipping_product&gt;</code>	An individual shipping product, i.e. a service that matches the search criteria that were sent in the query.  See page 63 for the shipping services currently possible to get in the response.
<code>&lt;id&gt;15&lt;/id&gt;</code>	The shipping product's ID in i Fraktjakt. This can be used for purchasing the shipping product.  Data type: INTEGER Required: Yes
<code>&lt;name&gt;Privat&lt;/name&gt;</code>	The name of the service. Can be presented directly to you customers.  Data type: STRING Max chars: 35 Required: Ja
<code>&lt;description&gt;Bussgods - Privat&lt;/description&gt;</code>	Description of the shipping product. This can be presented directly to your customers.  Data type: STRING Max chars: 35 Required: Yes
<code>&lt;arrival_time&gt;1-2 dagar&lt;/arrival_time&gt;</code>	The arrival time; either the number of days from now or the expected date/time of arrival.  Data type: STRING Max chars: 64 Required: Yes, but may be empty
<code>&lt;price&gt;159.50&lt;/price&gt;</code>	The shipping product's total price.

	<p>In the requested currency.</p> <p>Data type: FLOAT Required: Yes</p>
<pre>&lt;tax_class&gt;25.00&lt;/tax_class&gt;</pre>	<p>The VAT percentage that applies to this shipping product.</p> <p>Data type: FLOAT Required: Yes</p>
<pre>&lt;to_agent&gt;1&lt;/to_agent&gt;</pre>	<p>If the product is delivered by an agent or not.</p> <p>Data type: BOOLEAN</p> <p>Required: Yes</p> <p>0 = false. Selivery directly to the customer.</p> <p>1 = true. Delivery to an agent.</p> <p>Only sent in the reply for API-version 3.8.0 or later.</p>
<pre>&lt;agent_info&gt;Cityterminalen Stockholm ca 2 km i Stockholm&lt;/agent_info&gt;</pre>	<p>The shipping agent location that is closest to the receiver's address (does not apply to direct delivery shipping products).</p> <p>If Fraktjakt is missing information about nearest agent it is announced with the text "Agent information is missing".</p> <p>Data type: STRING Max chars: 72 Required: Yes, but may be empty</p>
<pre>&lt;agent_link&gt; <a href="https://www.fraktjakt.se/agents/search_closest/377483?type=9&amp;shipper=4">https://www.fraktjakt.se/agents/search_closest/377483?type=9&amp;shipper=4</a> &lt;/agent_link&gt;</pre>	<p>A link to a map that shows where the shipping agent defined in &lt;agent_info&gt; is located.</p> <p>Data type: STRING</p> <p>Max chars: 256</p> <p>Required: Yes, but may be empty</p>
<pre>&lt;agent_in_info&gt;Jönköping Bussgods ca 1 km i Jönköping&lt;/agent_in_info&gt;</pre>	<p>The shipping agent location that is closest to the sender's address (does not apply to shipping products with pickup).</p> <p>Is only sent if agents_in is true.</p>

	Data type: STRING Max chars: 72 Required: No
<pre>&lt;agent_in_link&gt; <a href="https://www.fraktjakt.se/agents/search_closest/377482?type=8&amp;shipper=4">https://www.fraktjakt.se/agents/search_closest/377482?type=8&amp;shipper=4</a> &lt;/agent_in_link&gt;</pre>	<p>A link to a map that shows where the shipping agent defined in &lt;agent_in_info&gt; is located.</p> <p>Is only sent if agents_in is true.</p> <p>Data type: STRING Max chars: 256 Required: No</p>
<pre>- &lt;shipper&gt;</pre>	<p>The shipper delivering the shipping product.</p> <p>This element (and its sub elements) is only created if &lt;shipper_info&gt; has been sent in the initial API call with the value "1".</p> <p>Required: No</p>
<pre>&lt;id&gt;4&lt;/id&gt;</pre>	<p>The shipper's ID # in Fraktjakt.</p> <p>Data type: INTEGER Required: No</p>
<pre>&lt;name&gt;Bussgods&lt;/name&gt;</pre>	<p>The shipper's name.</p> <p>Data type: STRING Max chars: 35 Required: No</p>
<pre>&lt;logo_url&gt; <a href="https://www.fraktjakt.se/images/shippers/4.png">https://www.fraktjakt.se/images/shippers/4.png</a> &lt;/logo_url&gt;</pre>	<p>Transportörens logo. I fall du vill visa The shipper image logo url. In case you want to present it in the search result.</p> <p>Data type: STRING Max chars: 72 Required: No</p>
<pre>&lt;/shipper&gt;</pre>	
<pre>&lt;/shipping_product&gt;</pre>	
<pre>&lt;/shipping_products&gt;</pre>	
<pre>&lt;/shipment&gt;</pre>	

**Notes:**

1. Available if the `<api_version>` element is larger than 2.9.2. Put the code in the link:  
[https://www.fraktjakt.se/shipments/show/SHIPMENT\\_ID&access\\_code=ACCESS\\_COD](https://www.fraktjakt.se/shipments/show/SHIPMENT_ID&access_code=ACCESS_COD)  
For more information about the link, see page 86.
2. Available if the `<api_version>` element is larger than 3.6.0 Put the code in the link:  
[https://www.fraktjakt.se/trace/shipment/TRACKING\\_CODE](https://www.fraktjakt.se/trace/shipment/TRACKING_CODE)  
For more information about the link, see page 86.

# Order API - make a shipment ready to be purchased

There are two different types of Order API calls.

In a common integration where you have first submitted a Query API call to present shipping options for the online store customer, the web shop will communicate a second time with Fraktjakt to place an order. Then you use Order API call type 1 (page 55).

In a web site integration, it may be appropriate that this happens after the web store's customer has completed the payment for the goods purchased in the online store.

If you know exactly which shipping service you want to buy, and do not want to call the Query API to get shipping options and shipping prices in advance, then you can use Order API Call Type 2 (see page 56). The advantage is that you create an order with just a single call to Fraktjakt.

Use the following URI to send an order to Fraktjakt via the Order API:

[https://testapi.fraktjakt.se/orders/order\\_xml](https://testapi.fraktjakt.se/orders/order_xml) (TEST API – test environment)

[https://api.fraktjakt.se/orders/order\\_xml](https://api.fraktjakt.se/orders/order_xml) (PROD API – live production environment)

The setting called 'Incoming shipment connection' in the integration's settings in Fraktjakt indicates whether an email from Fraktjakt to the Web Administrator should be created for each call to this API. This way, the administrator can easily manage the administration if it rarely comes calls.

## ***Calltype 1 – Create an order from a previously created shipment***

Usually the previously created shipment was created using the Query API.

The incoming XML contains the element, `<shipment_id>`, which identifies a previously created shipment from the Query-API-call.

Do not use the element `<parcels>`, for this call type. The previously created original shipment (identified with `<shipment_id>`) should already have dimensions (length, width and height) for each package in it. Either from entering the `<parcels>` element or from the packages being calculated based on specified commodities.

However, you may need to submit the `<commodities>` element if the package contents not were specified when doing the shipment query. If the content is already known, the new `<commodities>`

element is ignored.

The API will not allow an order to be created if the dimensions are missing in the shipment from which it's created.

If you send a call to Order API containing a `shipment_id` from a previous order, a new order will be created with a new shipment (with a new `shipment_id`). These will look the same as the previous shipment and order. This makes it easy to do multiple purchases of identical shipments with the same addresses. This is a quick way to copy a shipment.

Order API divides a shipment in to multiple shipments when the original shipment contains more than one package and the shipping service is one where the receiver collects the shipment at a an agent.

It's possible to send addresses with the elements, `<address_from>` and `<address_to>`, but these will not be used here. The address will always be from the given shipment.

## ***Call type 2 – Create and order directly without a previously created shipment.***

This call type allows you to directly place a shipping-order in Fraktjakt.'s shopping cart.

The incoming XML does not contain any `<shipment_id>` element. Instead, the `<commodities>` element is used and if you want to you may use the `<parcels>` element. Therefore, `<commodities>` needed and `<parcels>` can be submitted if desired.

If you only submit `<commodities>`, the packages are calculated as in the Query API, see page 32, if the weights are specified.

If there are `<parcels>` but not `<commodities>`, they must be completed later in the shopping cart.

The alternatives for the `<shipping_product_id>` element can be found by calling [https://www.fraktjakt.se/shipping\\_products/xml\\_list](https://www.fraktjakt.se/shipping_products/xml_list),

Address management:

- Sender address – If the sender address is sent with the element, `<address_from>`, it will be used, otherwise the registered delivery address will be used.
- Receiver address - If the receiver address is sent with the element, `<address_to>`, it will be used as the receiver address. Otherwise the sender address will be used. In most cases this is not desirable.

## ***XML for Order API calls***



XML element tag and example of contents	Description
<?xml version="1.0" encoding="UTF-8"?>	XML header
- <OrderSpecification>	<p>This is the document element, i.e. the element that contains the entire order that is being sent to Fraktjakt. It contains one shipment.</p> <p>Required: Yes</p>
<value>10.2</value>	<p>[Currently not used] This is the value of all items in the order, i.e. the reimbursement amount in case of loss in transport. It should normally be the same as the shipment's value (See below.).</p> <p>Data type: FLOAT Required: No</p>
- <consignor>	Information about the consignor, i.e. the webshop or other entity that is sending the order.
See consignor element on page 16.	
</consignor>	
<referred_consignor>	<p>Use this element if the shipment order will be finished and paid for by someone other than the consignor. Enter the name of the</p> <p>The response will then also include the element &lt;payment_link&gt; that will link to the payment-page.</p> <p>Data type: INT Required: No</p>
<id>12121</id>	<p>The payer's customer ID in Fraktjakt.</p> <p>Data type: INT Required: Yes, if referred_consignor is used</p>
<key>121212121212121212121212121212121</key>	<p>The payer's customer ID in Fraktjakt.</p> <p>Data type: STRING Max chars: 64 Required: Yes, if referred_consignor is used</p>
</referred_consignor>	
<shipment_id>67887</shipment_id>	Fraktjakt's shipment ID

	<p>This must be an ID that you have received in a response from the Query API. If you have already used the same shipment ID in a previous call to the Order API, Fraktjakt will create a new copy of the existing shipment record with a new shipment ID (but with the same shipment details).</p> <p>Data type: INT  Required: Yes, for call typ 1  No for call type 2.</p>
<p><code>&lt;shipping_product_id&gt;15&lt;/shipping_product_id&gt;</code></p> <p><i>(Should be one of the shipping product IDs from the response to a previous query_xml call.)</i></p>	<p>The shipping product's ID in Fraktjakt.</p> <p>For call type 1: This must be an ID that you have received in a response from the Query API.</p> <p>Call Type 2 uses a number from the list of products.</p> <p>If an incorrect number is entered, the shipment must be corrected in Fraktjakt.</p> <p>Data type: INT  Required: Yes</p>
<p><code>&lt;reference&gt;To my mother&lt;/reference&gt;</code></p>	<p>Free text that refers to the order in Fraktjakt. This element may contain your own system's order ID, an identifying text, or some other. This text will appear on your shipping labels.</p> <p>Data type: STRING  Max chars: 50  Required: No</p>
<p><code>&lt;export_reason&gt;SALE&lt;/export_reason&gt;</code></p> <p>Valid values:</p> <ul style="list-style-type: none"> <li>• SALE – Any shipment being sold or sent free of charge, from one business entity to another, for the purpose of being re-sold or otherwise consumed in the course of carrying out its business.</li> <li>• GIFT – Any shipment containing articles to be given as an unsolicited gift, from one private individual to another private individual, which are not being shipped by a business nor consigned to a business.</li> <li>• SAMPLE – Any shipment containing articles which are sent</li> </ul>	<p><i>Reason for export</i> tells the purpose of the shipment.</p> <p>Data type: STRING  Max chars: 16  Default: SALE  Required: <b>Recommended for</b> International shipments</p>

<p>free of charge that have been marked or mutilated or otherwise made unsuitable for sale or use except as commercial samples, being shipped with the view of soliciting an order or as a mock-up to furthering an existing order from the foreign entity.</p> <ul style="list-style-type: none"> <li>• RETURN – The cargo that was bought from the receiver</li> <li>• REPAIR – Articles being shipped for repair or articles previously exported for repairs which are being returned following the repair.</li> <li>• PERSONAL EFFECTS – Any shipment containing used personal articles such as unaccompanied baggage and household goods being shipped for relocation.</li> </ul>	
<commodities>	<p>The shipments content.</p> <p>The different commodities the shipment.</p> <p>For call type 1, specify, if it is not previously specified for the freight in the Query API. That is recommended to do.</p> <p>Must be entered for call type 2.</p>
<b>See the Commodity chapter on page Fel: Det gick inte att hitta referenskällan.</b>	
</commodities>	
- <parcels>	<p>Packages to be sent.</p> <p>Always omitted at call type 1</p> <p>May be omitted at call type 2 if commodities are given by weight and for (shipping_product_id = 137-141).</p> <p>See Note 3.</p>
- <parcel>	Package data
<weight>3.2</weight>	<p>Package in weight</p> <p>Data typee: FLOAT Required: Yes (if parcel is used)</p>
<length>35</length>	<p>Package length in cm</p> <p>Data typee: FLOAT Required: Yes (if parcel is used)</p> <p>widest side</p>
<width>23.5</width>	Paket bredd i cm

	Data type: FLOAT Required: Yes (if parcel is used)  second widest side
<height>15</height>	Package height in cm  Data type: FLOAT Required: Yes (if parcel is used)
</parcel>	
</parcels>	
- <address_from>	Sender address  Required: Yes for Call type 2. Is not used in Call type 1.  If not entered the shipment address from the settings will be used.
See address element on page 25	
</address_from>	
- <address_to>	Receiver address  Alternative name is 'address'  Required: yes, with call type 2  Is not used in Call type 1.
See address element on page 25	<b>Know that &lt;language&gt; can be used</b>
</address_to>	
- <sender>	The Sender  Required: <b>No, but for receiver paid it should be given.</b>
<company_from>Köp och sälj AB</company_from>	Sending company name  Data type: STRING Max chars: 32 Required: No

<pre>&lt;name_from&gt;Sven Andersson&lt;/name_from&gt;</pre>	<p>Name of sending contact</p> <p>Data type:STRING Max chars: 32 Required: No</p>
<pre>&lt;telephone_from&gt;036190220&lt;/telephone_from&gt;</pre>	<p>Senders telephone number</p> <p>Data type: STRING Max chars: 32 Required: No</p>
<pre>&lt;email_from&gt;sven@webbutikenab.se&lt;/email_from&gt;</pre>	<p>Senders email address</p> <p>Data type:: STRING Max chars: 64 Required: No, <i>and is not used if the tagg &lt;sender_email&gt; is given.</i></p>
<pre>&lt;/sender&gt;</pre>	
<pre>- &lt;recipient&gt;</pre>	<p>The receiver of the shipment.</p> <p>Required: No If not given for shipments the receiver pays, the information from the integration is used.</p>
<pre>&lt;company_to&gt;Buy and Sell Ltd&lt;/company_to&gt;</pre>	<p>The recipient's company name (if the recipient is a company).</p> <p>Data type: STRING Max chars: 32 Required: Not if name_to is defined instead. Otherwise yes.</p>
<pre>&lt;name_to&gt;Sven Andersson&lt;/name_to&gt;</pre>	<p>The recipient's name (if the recipient is not a company).</p> <p>Data type: STRING Max chars: 32 Required: Not if company_to is defined instead. Otherwise yes.</p>
<pre>&lt;telephone_to&gt;0730710220&lt;/telephone_to&gt;</pre>	<p>The recipient's telephone number.</p> <p>Data type: STRING Max chars: 32 Required: No – but we recommend you to send it</p> <p><b>See Note 7 for how the notification is set.</b></p>
<pre>&lt;mobile_to&gt;0730710220&lt;/mobile_to&gt;</pre>	<p>The recipient's cell phone number.</p> <p>Data type: STRING Max chars: 32</p>

	<p>Required: No</p> <p>See Note 7 for how the notification is set.</p>
<email_to>sven@webbutikenab.se</email_to>	<p>The recipient's e-mail address.</p> <p>Data type: STRING Max chars: 64 Required: Should be entered so that email notification works, including the tailor made notification from Fraktjakt.</p> <p>See Note 7 for how the notification is set.</p>
<tax_id>1234567890</tax_id>	<p>The recipient's tax identification number (TIN).</p> <p>Data type: STRING Max chars: 18 Required: No, but used in shipments from or to EU.</p>
</recipient>	
<sender_email>info@example.info</sender_email>	<p><b>[Only applies to pre-paid shipping]</b> The e-mail address of the person who will be handling the shipment, if not the consignor.</p> <p>This will generate a sender_email_link element in the reply and an email to that address when the order is paid.</p> <p>Data type: STRING Max chars: 64 Required: No</p>
<booking>	<p>Booking information. Shipments are always booked from the sender's address. If no booking address is included, Fraktjakt will use the address information that you entered on the integrations configuration page at Fraktjakt.se.</p> <p>Required: No</p>
<driving_instruction>Here and there</driving_instruction>	<p>Instructions on how to find the place where the shipment is to be picked up for delivery.</p> <p>Data type: String Required: No</p>
<user_notes>Port code 1112</user_notes>	<p>Notes to the deliverer with information that are needed in order</p>

	<p>for the booking to be carried out.</p> <p>Data type: String</p> <p>Required: No</p> <p>DEPRECATED</p>
<pickup_date>2019-12-10</pickup_date>	<p>The date when the shipment is to be picked up. This must be a date in the future.</p> <p>Data type: Date (YYYY-MM-DD)</p> <p>Required: No</p>
</booking>	
</OrderSpecification>	

## Notes:

1. A shipment contains one or more parcels.
2. En shipment contains one or more commodity types.
3. If you specify dimensions 120 or 60 on length and 80 on width, Fraktjakt interprets the input package as a pallet or half pallet and searches for shipping products for pallets. If the height is below 125 cm, the pallet will be stackable. Higher heights provide non-stackable pallets.
4. At least one contact method must be included for the shipping recipient. It is recommended that the recipient's e-mail address is always included.
5. [https://en.wikipedia.org/wiki/ISO\\_3166-1\\_alpha-2](https://en.wikipedia.org/wiki/ISO_3166-1_alpha-2)
6. <user\_notes> will not be supported in the future. Put the text inf 'driving\_instructions' instead.
7. The notification to the recipient is determined as follows:  
 In the first place, SMS notification is used, if the selected shipping product supports it. The selected number is <telephone\_to> if it is a mobile number or <mobile\_to> if it is entered. Many platforms only support one field for the telephone and it should then be sent into <telephone\_to>. Then Fraktjakt takes care of the logic based on what the user enters for the type of number.  
 Alternatively, as second prio, telephone notification is used, if the selected shipping product supports it, where you call the recipient. Provided <telephone\_to> is specified.  
 Third, email notification is selected if supported by the the selected shipping product and if <email\_to> is submitted.  
 Ultimately, letter notification is used if the selected shipping product supports it.

Once Fraktjakt receives an order via the Order API, the order is “completed” internally in Fraktjakt.

This entails that the order is associated with your Fraktjakt account, pending payment. The shipment can be found in the shopping cart.

## **Example – Call type 1 Domestic**

**Create an order from an earlier created shipment (usually created through *Query API*).**

In this case, the content of the shipping has been submitted to the Query API for calculating which packages are used and id = 87566 returned. See Query API Example 1 page 38. Bussgods Sverigefrakt is selected.

This XML will work if you replace *consignor id* and *key* to your own integration values, as well as entering an existing *shipment\_id*.

```
<?xml version="1.0" encoding="UTF-8"?>
<OrderSpecification>
  <consignor>
    <id>YOUR_CONSIGNOR_ID</id>
    <key>YOUR_CONSIGNOR_KEY</key>
    <currency>SEK</currency>
    <language>en</language>
    <encoding>utf-8</encoding>
    <api_version>3.7.0</api_version>
  </consignor>
  <referred_consignor>
    <id>REFERRED_CONSIGNOR_ID</id>
    <key>REFERRED_CONSIGNOR_KEY</key>
  </referred_consignor>
  <shipment_id>87566</shipment_id>
  <shipping_product_id>25</shipping_product_id>
  <reference>My brothers shoes</reference>
  <recipient>
    <name_to>Olle Klint</name_to>
    <company_to>Hanson & Greve AB</company_to>
    <telephone_to>036190220</telephone_to>
  </recipient>
  <booking>
    <pickup_date>2019-12-10</pickup_date>
    <driving_instruction>Drive up on the alley to your right.</driving_instruction>
    <user_notes>Port code 1112</user_notes>
  </booking>
</OrderSpecification>
```

## **Example – Call type 1 International**

**Create an order from an earlier created INTERNATIONAL shipment (usually created through *Query API*).**

In this case, the query API has only specified the package and not the content. The weight was 2.8 kg.

This XML will work if you replace *consignor id* and *key* to your own integration values, as well as



entering an existing *shipment\_id*.

```
<?xml version="1.0" encoding="UTF-8"?>
<OrderSpecification>
  <consignor>
    <id>YOUR_CONSIGNOR_ID</id>
    <key>YOUR_CONSIGNOR_KEY</key>
    <currency>EUR</currency>
    <language>en</language>
    <encoding>utf-8</encoding>
    <api_version>3.7.0</api_version>
  </consignor>
  <shipment_id>694556</shipment_id>
  <shipping_product_id>119</shipping_product_id>
  <reference>My brothers shoes</reference>
  <export_reason>GIFT</export_reason>
  <commodities>
    <commodity>
      <name>Skor</name>
      <quantity>2</quantity>
      <taric>0123456789</taric>
      <quantity_units>EA</quantity_units>
      <description>Black leather shoes with laces</description>
      <country_of_manufacture>FI</country_of_manufacture>
      <weight>2.8</weight>
      <unit_price>99.99</unit_price>
      <currency>EUR</currency>
    </commodity>
  </commodities>
  <recipient>
    <name_to>Olle Klint</name_to>
    <company_to>Hanson & Greve AB</company_to>
    <telephone_to>036190220</telephone_to>
  </recipient>
  <booking>
    <pickup_date>2019-12-10</pickup_date>
    <driving_instruction>Drive up on the alley to your right.</driving_instruction>
    <user_notes>Port code 1112</user_notes>
  </booking>
</OrderSpecification>
```

## Example – Call type 2 Domestic

Create an order directly (without having created a shipment in an earlier query call).

This XML will work if you replace *consignor id* and *key* to your own integration values, as well as entering an existing *shipment\_id*.

```
<?xml version="1.0" encoding="UTF-8"?>
<OrderSpecification>
  <consignor>
    <id>YOUR_CONSIGNOR_ID</id>
    <key>YOUR_CONSIGNOR_KEY</key>
    <currency>SEK</currency>
    <language>en</language>
    <encoding>utf-8</encoding>
    <api_version>3.7.0</api_version>
  </consignor>
  <shipping_product_id>25</shipping_product_id>
  <reference>Ordernr 123456</reference>
  <commodities>
```

```

    <commodity>
      <name>Jeans</name>
      <quantity>1</quantity>
      <description>Bluejeans size 33x32</description>
      <weight>1.3</weight>
    </commodity>
  </commodities>
  <address_from>
    <street_address_1>Gjuterigatan 9</street_address_1>
    <street_address_2></street_address_2>
    <postal_code>55318</postal_code>
    <city_name>Jönköping</city_name>
    <residential>0</residential>
    <country_code>SE</country_code>
  </address_from>
  <address_to>
    <street_address_1>Hedenstorp 10</street_address_1>
    <street_address_2></street_address_2>
    <postal_code>33292</postal_code>
    <city_name>Gislaved</city_name>
    <residential>1</residential>
    <country_code>SE</country_code>
    <language>sv</language>
  </address_to>
  <recipient>
    <name_to>Olle Klint</name_to>
    <telephone_to>036190220</telephone_to>
  </recipient>
  <booking>
    <pickup_date>2019-04-06</pickup_date>
    <driving_instruction>Drive up on the alley to your right.</driving_instruction>
    <user_notes>Port code 1112</user_notes>
  </booking>
</OrderSpecification>

```

## Example – Call type 2 International

Create an order directly (without having created a shipment in an earlier query call).

This XML will work if you replace *consignor id* and *key* to your own integration values, as well as entering an existing *shipment\_id*.

```

<?xml version="1.0" encoding="UTF-8"?>
<OrderSpecification>
  <consignor>
    <id>YOUR_CONSIGNOR_ID</id>
    <key>YOUR_CONSIGNOR_KEY</key>
    <currency>SEK</currency>
    <language>en</language>
    <encoding>utf-8</encoding>
    <api_version>3.7.0</api_version>
  </consignor>
  <shipping_product_id>119</shipping_product_id>
  <reference>Ordernr 123456</reference>
  <export_reason>GIFT</export_reason>
  <commodities>
    <commodity>
      <name>Jeans</name>
      <quantity>2</quantity>
      <taric>0123456789</taric>
      <quantity_units>EA</quantity_units>
      <description>Levis blue jeans, size 33x32</description>
    </commodity>
  </commodities>

```

```
<country_of_manufacture>FI</country_of_manufacture>
<weight>1.5</weight>
<unit_price>99.99</unit_price>
<currency>EUR</currency>
</commodity>
</commodities>
<address_from>
  <street_address_1>Gjuterigatan 9</street_address_1>
  <street_address_2></street_address_2>
  <postal_code>55318</postal_code>
  <city_name>Jönköping</city_name>
  <residential>0</residential>
  <country_code>SE</country_code>
</address_from>
<address_to>
  <street_address_1>101 Main Street</street_address_1>
  <street_address_2></street_address_2>
  <postal_code>12345</postal_code>
  <city_name>Schenectady</city_name>
  <residential>1</residential>
  <country_code>US</country_code>
  <country_subdivision_code>NY</country_subdivision_code>
  <language>en</language>
</address_to>
<recipient>
  <name_to>Jack Martins</name_to>
  <telephone_to>(732) 555-1212</telephone_to>
</recipient>
<booking>
  <pickup_date>2019-04-06</pickup_date>
  <driving_instruction>Drive up on the alley to your right.</driving_instruction>
  <user_notes>Port code 1112</user_notes>
</booking>
</OrderSpecification>
```

## Response

XML element tag and example of contents	Description
<pre>&lt;?xml version="1.0" encoding="UTF-8"?&gt;</pre>	
<pre>- &lt;result&gt;</pre>	
<pre>&lt;status&gt;ok&lt;/status&gt;</pre>	<p>Status of API call</p> <p><u>ok</u> = API call succeeded.</p> <p><u>warning</u> = API call succeeded with warnings.</p> <p><u>error</u> = API call failed.</p> <p><i>Sent in response only for API versions 3.1.0 or greater.</i></p>
<pre>&lt;code&gt;1&lt;/code&gt;</pre>	<p>0=OK</p> <p>1=warning</p> <p>2=Error</p>
<pre>&lt;warning_message&gt;You need to define all measurements&lt;/warning_message&gt;</pre>	<p>Warning message with information that may be useful, especially when testing your integration.</p> <p>Data type: STRING</p> <p>Max chars: 500</p> <p>Required: Yes</p>
<pre>&lt;error_message&gt;&lt;/error_message&gt;</pre>	<p>Error message.</p> <p>Data type: STRING</p> <p>Max chars: 500</p> <p>Required: Yes</p>
<pre>&lt;shipment_id&gt;45654&lt;/shipment_id&gt;</pre>	<p>Fraktjakt's shipment ID, see note</p>

	<p>1</p> <p>Data type: INT</p> <p>Required: Yes</p>
<access_code>ABC12345</access_code>	<p>A code for accessing and managing the shipment without previously being logged in. (note 2)</p>
<access_link> <a href="https://www.fraktjakt.se/shipments/show/163221?access_code=b6dfc12fc04ec98132da2eb1c1739272cc646ed9">https://www.fraktjakt.se/shipments/show/163221?access_code=b6dfc12fc04ec98132da2eb1c1739272cc646ed9</a> </access_link>	<p>A link to the shipment using the above SHIPMENT_ID and ACCESS_CODE.</p> <p>Data type: STRING</p> <p>Required: Yes</p>
<tracking_code>ABC12345</tracking_code>	<p>A code to track this shipment without previously being logged in. See note 2.</p>
<tracking_link> <a href="https://www.fraktjakt.se/trace/shipment/b6dfc12fc04">https://www.fraktjakt.se/trace/shipment/b6dfc12fc04</a> </tracking_link>	<p>A link to track the shipment using the above TRACKING_CODE</p> <p>Data type: STRING</p> <p>Required: Yes</p>
<order_id>67887</order_id>	<p>Fraktjakt's order ID</p> <p>Data type: INT</p> <p>Required: Yes</p>
<amount>1066.33</amount>	<p>The cost of the shipment, excluding VAT.</p> <p>Data type: FLOAT</p> <p>Required: Yes</p>
<currency>SEK</currency>	<p>Currency corresponding to the shipment cost.</p> <p>Data type: STRING</p> <p>Max chars: 3</p>

	Required: Yes
<pre>&lt;payment_link&gt;</pre> <p><a href="https://www.fraktjakt.se/orders/finish/1631?code=b6dfc12fc04ec98132da2eb1c1739272cc646ed9">https://www.fraktjakt.se/orders/finish/1631?code=b6dfc12fc04ec98132da2eb1c1739272cc646ed9</a></p> <pre>&lt;/payment_link&gt;</pre>	<p>This element contains a link to the payment page If a referred_consignor element is submitted for the paying user.</p> <p>Data type: STRING</p> <p>Required: No</p>
<pre>&lt;sender_email_link&gt;</pre> <p><a href="https://www.fraktjakt.se/orders/confirmation/1671?key=cabec52762637412652e5023deb5e5c2">https://www.fraktjakt.se/orders/confirmation/1671?key=cabec52762637412652e5023deb5e5c2</a></p> <pre>&lt;/sender_email_link&gt;</pre>	<p>A link to handle the shipment after the order is paid. The element is added if sender_email is sent in the order-call.</p> <p>Data type: STRING</p> <p>Required: No</p>
<pre>&lt;/result&gt;</pre>	

## Notes:

1. This is not necessarily the same *shipment\_id* that was returned when creating the order, since that *SHIPMENT\_ID* can be reused and changed if the shipment is split into several new shipments.

This *SHIPMENT\_ID* can be used to track the shipment with one of these links:

(just substitute *SHIPMENT\_ID* with the actual shipment\_id number that was returned)

[https://www.fraktjakt.se/trace/list\\_shipment/SHIPMENT\\_ID](https://www.fraktjakt.se/trace/list_shipment/SHIPMENT_ID)

[https://www.fraktjakt.se/trace/xml\\_trace?consignor\\_id=YOUR\\_CONSIGNOR\\_ID&consignor\\_key=YOUR\\_CONSIGNOR\\_KEY&shipment\\_id=SHIPMENT\\_ID](https://www.fraktjakt.se/trace/xml_trace?consignor_id=YOUR_CONSIGNOR_ID&consignor_key=YOUR_CONSIGNOR_KEY&shipment_id=SHIPMENT_ID)

2. Available if `<api_version>` is larger than 2.9.2. Put the code in link:  
[https://www.fraktjakt.se/shipments/show/SHIPMENT\\_ID&access\\_code=ACCESS\\_CODE](https://www.fraktjakt.se/shipments/show/SHIPMENT_ID&access_code=ACCESS_CODE)  
For more information about the link, see page 86
3. Available if the `<api_version>` element is larger than 3.6.0 Put the code in the link:  
[https://www.fraktjakt.se/trace/shipment/TRACKING\\_CODE](https://www.fraktjakt.se/trace/shipment/TRACKING_CODE)  
For more information about the link, see page 86.

# Shipment API

## (Merchant controlled)

The Shipment API is used to create a preliminary shipment in Fraktjakt. No price search is performed by the call, so the integration administrator must later on complete the price search and shipment purchase after logging in to Fraktjakt.

In Fraktjakt it is possible to set whether or not an automatic search should be done. It is also possible to set how the search should then choose freight service.

The Shipment API is usually used by an integration to make a call to Fraktjakt after the webshop's customer has completed the payment for the goods purchased in the online store. It's the integration administrator who sends out the call by clicking a link in the online store's admin console.

The shipment must have Sweden as either sender country or recipient country, or both.

Prepare a shipment in Fraktjakt by calling Shipment API with the following URL:

[https://testapi.fraktjakt.se/shipments/shipment\\_xml](https://testapi.fraktjakt.se/shipments/shipment_xml) (TEST API – test environment)

[https://api.fraktjakt.se/shipments/shipment\\_xml](https://api.fraktjakt.se/shipments/shipment_xml) (PROD API – production environment)

After the call to this API, Fraktjakt starts to automatically find the best freight based on the information in the call. How that search should work and what result to find can be set in the settings for the Integration in Fraktjakt.

This way, your freight handling can go extremely fast and with few manual interventions.

If you want help with the settings, do not hesitate to contact Fraktjakt's customer service, see sid 100.

The shipment can be found using the following URL:

[https://www.fraktjakt.se/shipments/show/SHIPMENT\\_ID&access\\_code=ACCESS\\_CODE](https://www.fraktjakt.se/shipments/show/SHIPMENT_ID&access_code=ACCESS_CODE)

The setting for email from Fraktjakt called 'Incoming shipment connection' in the integration's settings in Fraktjakt determines if a mail from Fraktjakt to the integration admin should be sent for every call to this API.

## Call

XML element tag and example of contents	Description
<code>&lt;?xml version="1.0" encoding="UTF-8"?&gt;</code>	XML-header
- <code>&lt;CreateShipment&gt;</code>	The call to Fraktjakt  Required: <b>Yes</b>
- <code>&lt;consignor&gt;</code>	Information about who's making the call.
<b>See Consignor-element on page 22</b>	
<code>&lt;/consignor&gt;</code>	
- <code>&lt;referred_consignor&gt;</code>	Use this element if someone other than the consignor will be paying for the transportation. The element should contain the name of the person who will be handling the shipment.  The response will then also include the element, <code>&lt;payment_link&gt;</code> , that will link to the payment-page.  Data type: INT
<code>&lt;id&gt;REFERRED_CONSIGNOR_ID&lt;/id&gt;</code>	The payer's customer ID in Fraktjakt.  Data type: INT Required: <b>Yes, if referred_consignor is used</b>
<code>&lt;key&gt;REFERRED_CONSIGNOR_KEY&lt;/key&gt;</code>	The payer's customer key in Fraktjakt.  Data type: STRING Max chars: 64 Required: <b>Yes, if referred_consignor is used</b>
<code>&lt;/referred_consignor&gt;</code>	
<code>&lt;reference&gt;Orderid 1236&lt;/reference&gt;</code>	Individual field for referencing the shipment in Fraktjakt. It could be your own order_id, help text or any value you choose. Also visible on all shipping notes.  Data type: STRING



	<p>Max chars: 50</p> <p>Only digits, letters A-Z and space are allowed..</p> <p>Required: No</p>
<pre>&lt;price_sort&gt;[0   1]&lt;/price_sort&gt;</pre>	<p>To override the settings for how searches will be sorted. 1 if the search is to be sorted by the cheapest price. If 0 the search is sorted on delivery time instead.</p> <p>Datatype: BOOLEAN Required: No Default = The settings for the integration</p>
<p>- &lt;address_from&gt;</p>	<p>Sender address</p> <p>Required: No</p> <p>If not entered the address from the settings will be used.</p>
<p><b>See address element on page 25</b></p>	
<pre>&lt;/address_from&gt;</pre>	
<p>- &lt;address_to&gt;</p>	<p>Receiver address</p> <p>Required: No</p> <p>If not entered, the sender address will be used. Which is usually not something you want.</p>
<p><b>See address element on page 25</b></p>	<p><b>Know that &lt;language&gt; can be used</b></p>
<pre>&lt;/address_to&gt;</pre>	
<pre>&lt;export_reason&gt;SALE&lt;/export_reason&gt;</pre> <p><i>Valid values:</i></p> <ul style="list-style-type: none"> <li><i>SALE – Any shipment being sold or sent free of charge, from one business entity to another, for the purpose of being re-sold or otherwise consumed in the course of carrying out its business.</i></li> <li><i>GIFT – Any shipment containing articles to be given as an</i></li> </ul>	<p><i>Reason for export</i> tells the purpose of the shipment.</p> <p>Data type: STRING Max chars: 16 Default: SALE</p> <p>Required: <b>International shipments</b></p>

<p><i>unsolicited gift, from one private individual to another private individual, which are not being shipped by a business nor consigned to a business.</i></p> <ul style="list-style-type: none"> <li>• <i>SAMPLE – Any shipment containing articles which are sent free of charge that have been marked or mutilated or otherwise made unsuitable for sale or use except as commercial samples, being shipped with the view of soliciting an order or as a mock-up to furthering an existing order from the foreign entity.</i></li> <li>• <i>RETURN – The cargo that was bought from the receiver</i></li> <li>• <i>REPAIR – Articles being shipped for repair or articles previously exported for repairs which are being returned following the repair.</i></li> <li>• <i>PERSONAL EFFECTS – Any shipment containing used personal articles such as unaccompanied baggage and household goods being shipped for relocation.</i></li> </ul>	
<p>&lt;sender_email&gt;info@example.info&lt;/sender_email&gt;</p>	<p><b>[Only applies to pre-paid shipping]</b> The e-mail address of the person who will be handling the shipment, if not the consignor.</p> <p>This will generate a sender_email_link element in the reply and an email to that address when the order is paid.</p> <p>Data type: STRING Max chars: 64 Required: No</p>
<p>- &lt;sender&gt;</p>	<p>The Sender</p> <p>Required: <b>No, but for receiver paid it should be given.</b></p>
<p>&lt;company_from&gt;Köp och sälj AB&lt;/company_from&gt;</p>	<p>Sending company name</p> <p>Data type: STRING Max chars: 32 Required: No</p>
<p>&lt;name_from&gt;Sven Andersson&lt;/name_from&gt;</p>	<p>Name of sending contact</p> <p>Data type:STRING Max chars: 32 Required: No</p>
<p>&lt;telephone_from&gt;036190220&lt;/telephone_from&gt;</p>	<p>Senders telephone number</p> <p>Data type: STRING Max chars: 32 Required: No</p>
<p>&lt;email_from&gt;sven@webbutikenab.se&lt;/email_from&gt;</p>	<p>Senders email address</p>

	<p>Data type: STRING Max chars: 64</p> <p>Required: <b>No, and is not used if the tagg &lt;sender_email&gt; is given.</b></p>
</sender>	
- <recipient>	<p>The receiver of the shipment.</p> <p>Required: Yes</p>
<company_to>Köp och sälj AB</company_to>	<p>The recipient's company name (if the recipient is a company).</p> <p>Data type: STRING Max chars: 32 Required: <b>Not if name_to is defined instead. Otherwise yes.</b></p>
<name_to>Sven Andersson</name_to>	<p>The recipient's name (if the recipient is not a company).</p> <p>Data type: STRING Max chars: 32 Required: <b>Not if company_to is defined instead. Otherwise yes.</b></p>
<telephone_to>036190220</telephone_to>	<p>The recipient's telephone number.</p> <p>Data type: STRING Max chars: 32 Required: <b>No - but should be specified for Email Notification to work as intended, including the customized notification from Fraktjakt.</b></p> <p><b>See Note 1</b></p>
<mobile_to>0709999999</mobile_to>	<p>The recipient's cell phone number.</p> <p>Data type: STRING Max chars: 32 Required: No</p> <p><b>See Note 1</b></p>
<email_to>sven@webbutikenab.se</email_to>	<p>The recipient's e-mail address.</p> <p>Data type: STRING Max chars: 64 Required: No, but it is highly recommended that it be sent in so that email notification works, including the tailor made notification</p>

	from Fraktjakt.
<tax_id>1234567890</tax_id>	The recipient's tax identification number (TIN).  Data type: STRING Max chars: 18 Required: No, but used in shipments from or to EU.
</recipient>	
<ommodities>	The content in the shipment  The commodity types in the shipment.  At least one item must be entered.  MinOccur = 1
See Commodity-element on page 28	If at least the total weight is specified on each Commodity, Fraktjakt can prepare the shipment even more to calculate packages to be used and even prepare a faster freight search.
</commodities>	
</CreateShipment>	

## Notes

1. Primarily <mobile\_to> is saved and secondly <telephone\_to>. It is used for notification to the recipient if the shipping product supports that type of notification.

## Example – Domestic

```
<?xml version="1.0" encoding="UTF-8"?>
<CreateShipment>
  <consignor>
    <id>YOUR_CONSIGNOR_ID</id>
    <key>YOUR_CONSIGNOR_KEY</key>
    <currency>SEK</currency>
    <language>en</language>
    <encoding>UTF-8</encoding>
    <system_name>Workpress</system_name>
    <module_version>1.0</module_version>
    <api_version>3.7.0</api_version>
  </consignor>
  <reference>Test shipment</reference>
  <address_to>
    <street_address_1>Brunnsgatan 16</street_address_1>
    <street_address_2></street_address_2>
    <postal_code>55317</postal_code>
    <residential>0</residential>
  </address_to>
</CreateShipment>
```

```

    <country_code>SE</country_code>
    <language>sv</language>
  </address_to>
  <recipient>
    <company_to>Fraktjakt AB</company_to>
    <name_to>Customer Service</name_to>
    <telephone_to>0709-399981</telephone_to>
    <email_to>testmail@fraktjakt.se</email_to>
  </recipient>
  <commodities>
    <commodity>
      <name>Cell phone</name>
      <quantity>3</quantity>
      <taric>01234567</taric>
      <quantity_units>EA</quantity_units>
      <description>Apple iPhone X</description>
      <country_of_manufacture>US</country_of_manufacture>
      <weight>0.6</weight>
      <unit_price>2395</unit_price>
      <currency>USD</currency>
    </commodity>
  </commodities>
</CreateShipment>

```

## Svar

XML element tag and example of contents	Description
<?xml version="1.0" encoding="UTF-8"?>	
- <result>	
<status>ok</status>	<p>Status of API call</p> <p><u>ok</u> = API call succeeded.</p> <p><u>warning</u> = API call succeeded with warnings.</p> <p><u>error</u> = API call failed.</p> <p><i>Sent in response only for API versions 3.1.0 or greater.</i></p>
<code>1</code>	<p>0=OK</p> <p>1=warning</p> <p>2=error</p>
<warning_message>Du behöver ange alla mått</warning_message>	<p>Warning message with information that may be useful, especially when testing your integration.</p> <p>Data type: STRING Max chars: 500 Required: Yes</p>

<code>&lt;error_message&gt;&lt;/error_message&gt;</code>	Error message.  Data type: STRING Max chars: 500 Required: No
<code>&lt;shipment_id&gt;45654&lt;/shipment_id&gt;</code>	Fraktjakt's shipment ID  Data type: INT Required: Yes
<code>&lt;access_code&gt;ABC12345&lt;/access_code&gt;</code>	A code for reaching and managing the shipment without being logged in.
<code>&lt;access_link&gt;</code> <a href="https://www.fraktjakt.se/shipments/show/163221?access_code=b6dfc12fc04ec98132da2eb1c1739272cc646ed9">https://www.fraktjakt.se/shipments/show/163221?access_code=b6dfc12fc04ec98132da2eb1c1739272cc646ed9</a> <code>&lt;/access_link&gt;</code>	A link to the shipment using the above SHIPMENT_ID and ACCESS_CODE.  Data type: STRING Required: No
<code>&lt;tracking_code&gt;ABC12345&lt;/tracking_code&gt;</code>	A code to track this shipment without previously being logged in. See note 1.
<code>&lt;tracking_link&gt;</code> <a href="https://www.fraktjakt.se/trace/shipment/b6dfc12fc04">https://www.fraktjakt.se/trace/shipment/b6dfc12fc04</a> <code>&lt;/tracking_link&gt;</code>	A link to track the shipment using the above TRACKING_CODE  Data type: STRING Required: Yes
<code>&lt;/result&gt;</code>	

After the call **you must** to access the new shipment using this link:

[https://www.fraktjakt.se/shipments/show/SHIPMENT\\_ID&access\\_code=ACCESS\\_CODE](https://www.fraktjakt.se/shipments/show/SHIPMENT_ID&access_code=ACCESS_CODE)

#### Notes:

1. Available if the `<api_version>` element is larger than 3.6.0 Put the code in the link:  
[https://www.fraktjakt.se/trace/shipment/TRACKING\\_CODE](https://www.fraktjakt.se/trace/shipment/TRACKING_CODE)  
For more information about the link, see page 86.

# Track & Trace API

In Fraktjakts settings for companies and integrations there's a tool for creating your own custom shipment tracking page. Here is an example of how a custom tracking page could look:



A webshop can give its customers access to their custom tracking page through the following link:

[https://www.fraktjakt.se/trace/shipment/TRACKING\\_CODE&locale=LOCALE](https://www.fraktjakt.se/trace/shipment/TRACKING_CODE&locale=LOCALE)

where TRACKING\_CODE is the <tracking\_code> returned from a request to Track&Trace API, and where LOCALE specifies the language to be used when rendering the page. Valid locales are currently SE for Swedish and EN for English.

There is a <tracking\_link> element returned from a request to Track&Trace API which contains the tracking link including the TRACKING\_CODE but without the LOCALE.

Also, there is a <tracking\_number> element returned from a request to Track&Trace API which contains the shipments tracking number, which can be used to manually track the shipment from Fraktjakts tracking page <https://www.fraktjakt.se/trace> or from the shipping company's tracking page.

## Do you want to create your own page instead?

If our customization settings don't suit your demands you could create your own tracking page or

otherwise retrieve and display tracking information directly to your site using the Track&Trace API.

A request to the Track&Trace API returns an XML response containing status information, which Fraktjakt has previously retrieved from the shipping companies' web services.

## The Call

Please note that no XML is needed for the call since we wanted to make the request as simple as possible. Track a shipment in Fraktjakt by calling Track & Trace API with the following URL:

### TEST API, for development and test

[https://testapi.fraktjakt.se/trace/xml\\_trace?](https://testapi.fraktjakt.se/trace/xml_trace?consignor_id=YOUR_CONSIGNOR_ID&consignor_key=YOUR_CONSIGNOR_KEY&shipment_id=SHIPMENT_ID)

[consignor\\_id=YOUR\\_CONSIGNOR\\_ID&consignor\\_key=YOUR\\_CONSIGNOR\\_KEY&shipment\\_id=SHIPMENT\\_ID](https://testapi.fraktjakt.se/trace/xml_trace?consignor_id=YOUR_CONSIGNOR_ID&consignor_key=YOUR_CONSIGNOR_KEY&shipment_id=SHIPMENT_ID)

PROD API, for real shipment purchases

[https://www.fraktjakt.se/trace/xml\\_trace?](https://www.fraktjakt.se/trace/xml_trace?consignor_id=YOUR_CONSIGNOR_ID&consignor_key=YOUR_CONSIGNOR_KEY&shipment_id=SHIPMENT_ID)

[consignor\\_id=YOUR\\_CONSIGNOR\\_ID&consignor\\_key=YOUR\\_CONSIGNOR\\_KEY&shipment\\_id=SHIPMENT\\_ID](https://www.fraktjakt.se/trace/xml_trace?consignor_id=YOUR_CONSIGNOR_ID&consignor_key=YOUR_CONSIGNOR_KEY&shipment_id=SHIPMENT_ID)

*SHIPMENT\_ID* is the *shipment\_id* returned from the *Order API*. It is not the same *shipment\_id* that is returned from the *Query API*. Those two id's might be different.

Also be aware that Fraktjakt might split one shipment into several shipments and that each one of these might have a different status. This is done for all shipping products that require the customer to pick up the package at a service point.

## Example

This HTTP call to the TEST API environment should work if you switch YOUR\_CONSIGNOR\_ID and YOUR\_CONSIGNOR\_KEY to your own and supply the SHIPMENT\_ID from the response to one of your previous API calls.

[http://testapi.fraktjakt.se/trace/xml\\_trace?](http://testapi.fraktjakt.se/trace/xml_trace?consignor_id=YOUR_CONSIGNOR_ID&consignor_key=YOUR_CONSIGNOR_KEY&shipment_id=SHIPMENT_ID)

[consignor\\_id=YOUR\\_CONSIGNOR\\_ID&consignor\\_key=YOUR\\_CONSIGNOR\\_KEY&shipment\\_id=SHIPMENT\\_ID](http://testapi.fraktjakt.se/trace/xml_trace?consignor_id=YOUR_CONSIGNOR_ID&consignor_key=YOUR_CONSIGNOR_KEY&shipment_id=SHIPMENT_ID)

## Response

XML element tag and example of contents	Description
<?xml version="1.0" encoding="iso-8859-1"?>	



- <result>	
<status> <b>ok</b> </status>	<p>Status of API call</p> <p><u>ok</u> = API call succeeded.</p> <p><u>warning</u> = API call succeeded with warnings.</p> <p><u>error</u> = API call failed.</p> <p><i>Sent in response only for API versions 3.1.0 or greater.</i></p>
<code> <b>0</b> </code>	<p>0=OK</p> <p>1=warning</p> <p>2=Error</p>
<warning_message></warning_message>	<p>Warning message with information that may be useful, especially when testing your integration</p> <p>Data type: STRING</p> <p>Max chars: 500</p> <p>Required: Yes</p>
<error_message></error_message>	<p>Error message.</p> <p>Data type: STRING</p> <p>Max chars: 500</p> <p>Required: Yes</p>
<shipping_states>	<p>The status of the different shipments</p> <p>MinOccur = 1</p>
<shipping_state>	<p>Status for one of the shipments</p> <p>MinOccur = 0 (If the wrong shipment_id is sent)</p>
<shipment_id> <b>204025</b> </shipment_id>	<p>Id for the shipment. Might be a</p>

	different one than the one sent in the call.  Data type: INTEGER Required: Yes
felaktig behörighet      <name> <b>Not payed</b> </name>	Status as text.  Data type: STRING Max chars: 500 Required: Yes
<id>0</id>	Status as a number (1).  Data type: INTEGER Required: Yes
<fraktjakt_id>8</fraktjakt_id>	Fraktjakt's internal status as a number  Data type: INTEGER Required: Yes
</shipping_state>	
</shipping_states>	
<tracking_code>  <b>b6dfc12fc04ec98132da2eb1c1739272cc646ed9</b>  </tracking_code>	A code needed to track the shipment.  Data type: STRING Required: Yes
<tracking_link>  <a href="https://www.fraktjakt.se/trace/shipment/b6dfc12fc04ec98132da2eb1c1739272cc646ed9&amp;locale=se">https://www.fraktjakt.se/trace/shipment/b6dfc12fc04ec98132da2eb1c1739272cc646ed9&amp;locale=se</a>  </tracking_link>	A link to track the shipment using TRACKING_CODE.  Data type: STRING Required: Yes

<code>&lt;tracking_number&gt;BG9700003016&lt;/tracking_number&gt;</code>	A code needed to track the shipment.  Data type: STRING  Required: No – returned only after the shipment has been purchased.
<code>&lt;/result&gt;</code>	

## Status Codes

The status of a shipment is seen in the *fraktjakt\_id* field that corresponds to the *shipping\_state* of the shipment identified by *shipment\_id*.

The following table shows the meanings of the numbers in *<shipping\_state>* elements.

<i>&lt;fraktjakt_id&gt;</i>	<i>&lt;id&gt;</i>	<i>&lt;name&gt;</i>	Comments
0	0	Not paid	If a <i>shipment_id</i> from a Query API response was sent and an Order API call did not send it.
1	0	Preliminary	A <i>shipment_id</i> was sent with an Order API call and a preliminary order has been created.
2	0		Not in use
3	0	Paid	<p>The order for the shipment has been paid for. This means that one or more of the following things happened, depending on the shipping service:</p> <ul style="list-style-type: none"><li>• Shipping documents have been created</li><li>• EDI have been sent to the carrier</li><li>• Pickup at the sender is booked</li><li>• Email sent to the sender.</li></ul>

12	0	Handled by the carrier	The shipment order is present in Fraktjakt but the payment will be made externally at the carrier. An example of this is when you buy Schenker Privpaks services.
4	1	Sent	The carrier has received the shipment either by pickup at the sender or if the sender left it at the terminal or the delivery agent.
5	2	Delivered	Sändningen har levererats till mottagaren eller till ett utlämningsombud nära till mottagaren, beroende på frakttjänsten som har köpts.  The Shipment was delivered to the receiver or to a delivery point close to the receiver, depending on the shipping service purchased.
6	3	Signed	The receiver has signed the delivery of the shipment.
7	4	Returned	The shipment has been returned to the sender for some reason.
18	0	On hold	The shipment was created through order import and is awaiting processing.

# Link to the shipment

When a shipment has been created through an API it can always be accessed on Fraktjakt.se if you have an `access_code` connected to that shipment. It's retrieved from the Order-API and Shipment-API response.

The shipment can be accessed with this link:

[https://www.fraktjakt.se/shipments/show/SHIPMENT\\_ID&access\\_code=ACCESS\\_CODE](https://www.fraktjakt.se/shipments/show/SHIPMENT_ID&access_code=ACCESS_CODE)

If the shipment search isn't complete you're directed to a page where you can complete it. If it's not purchased you're directed to the cart and if it is purchased you get to a page with the shipment or an order confirmation if you're not logged in.

Another link points to the tracking page for the shipment. It can be presented directly in your application to the end customer or sent to the addressee.

As soon as the freight is purchased in Fraktjakt, tracking information will be displayed on the page to which the link goes. A good way for the receiver to know where the shipment is.

Tracking link:

[https://www.fraktjakt.se/trace/shipment/TRACKING\\_CODE](https://www.fraktjakt.se/trace/shipment/TRACKING_CODE)

# Webshops API

## (create a user and a webshop)

Contact Fraktjakt if you want to use this API.

It can be practical to automatic create a user account and webshop information in Fraktjakt if you want to integrate a webshop platform with Fraktjakt. You can send in your users account-information to Fraktjakt and create accounts in both systems. It is relatively simple to do that. All you have to supply the API with is login, email address and telephone number to the new user.

To create a user-account and a webshop in Fraktjakt, use the API that has the following URL:

[https://testapi.fraktjakt.se/webshops/create\\_xml](https://testapi.fraktjakt.se/webshops/create_xml) (TEST API – test environment)

[https://api.fraktjakt.se/webshops/create\\_xml](https://api.fraktjakt.se/webshops/create_xml) (PROD API – production environment)

**IMPORTANT** The values you don't send in for the user and the webshop are copied from your user, except the password that will be set to a random string.

No accounts can be used before they are activated. You don't have to create a webshop. This API can also be used to just create a user account. All settings for access rights, webshop prices and what services that are shown are copied from your user.

### XML for webshop API calls

XML element tag and example of contents	Description
<?xml version="1.0" encoding="iso-8859-1"?>	
- <webshop>	
- <consignor>	Information about the consignor, i.e. the webshop or other entity that is sending the order.
See consignor-element on page 16	
</consignor>	
<email>name@email.se</email>	Users email

	Data type: STRING Required: Yes
<name> <b>Olle Klint</b> </name>	Users name (not login)  Data type: STRING Required: No Default: Consignor-users value
<password> <b>secret</b> </password>	Users password  Data type: STRING Required: No Default: Random
<login> <b>knut</b> </login>	Users login  Data type: STRING Required: Yes
<telephone> <b>036123456</b> </telephone>	Users telephone number  Data type: STRING Required: Yes
<new_webshop>	Block for the new webshop. No new webshop-information will be created if the block isn't provided. All values except the name are optional. If nothing is provided in a element, the value are copied from the consignor-user.
<name> <b>Joppes Webshop</b> </name>	Webshop name  Data type: STRING Required: Yes
<url> <b>https://kottegott.se</b> </url>	Webshop URL



	<p>Data type: STRING</p> <p>Required: No</p> <p>Default: Consignor-users value</p>
<ready_time>07:15</ready_time>	<p>The earliest time that pickup is possible. This time should be as early as possible, and it must be in the future.</p> <p>Data type: Time (HH:MM)</p> <p>Required: <b>No</b></p>
<close_time>16:16</close_time>	<p>The latest time that pickup is possible. This time should be as late in the afternoon as possible, and it must be in the future.</p> <p>Data type: Time (HH:MM)</p> <p>Required: No</p>
<driving_instruction> <b>First drive here, then there, then you have arrived</b> </driving_instruction>	<p>Direction to the site for pickup.</p> <p>Data type: STRING</p> <p>Required: No</p> <p>Default: Consignor-users value</p>
<registration_number>650616-7235</registration_number>	<p>Webshops registrationnumber. Needed for invoice</p> <p>Data type: STRING</p> <p>Required: No</p> <p>Default: Consignor-users value</p>
</new_webshop>	
<sender_address>	<p>Sender address for the webshop and the user.f. Used in alla fright-querys.</p>

	<p>Required: No</p> <p>Default:Consignor-users value</p>
See Address-element on page ?	
</sender_address>	
<p>&lt;invoice_address&gt;</p> <p>Address-element on page ?</p> <p>&lt;/invoice_address&gt;</p>	<p>Invoice-address. The sender_address will be used If it isn't provided, or if that isn't provided, the invoice-address for the consignor-user.</p> <p>Required: No</p> <p>Default: Consignor-users value</p>
<p>&lt;postal_address&gt;</p> <p>See Address-element on page ?</p> <p>&lt;/postal_address&gt;</p>	<p>Postal-address. The sender_address will be used If it isn't provided, or if that isn't provided, the postal-address for the consignor-user.</p> <p>Required: No</p> <p>Default: Consignor-users value</p>
</webshop>	

## response

XML element tag and example of contents	Description
<?xml version="1.0" encoding="iso-8859-1"?>	
- <result>	
<status> <b>ok</b> </status>	<p>Status of API call</p> <p><u>ok</u> = API call succeeded.</p> <p><u>warning</u> = API call succeeded with warnings.</p> <p><u>error</u> = API call failed.</p> <p><i>Sent in response only for API versions 3.1.0 or greater.</i></p>
<code> <b>1</b> </code>	<p>0=OK</p> <p>1=warning</p> <p>2=Error</p>
<warning_message> <b>Du behöver ange alla mått</b> </warning_message>	<p>Warning message with information that may be useful, especially when testing your integration.</p> <p>Data type: STRING</p> <p>Max chars: 500</p> <p>Required: Yes</p>
<error_message></error_message>	<p>Error message.</p> <p>Data type: STRING</p> <p>Max chars: 500</p> <p>Required: Yes</p>

<pre>&lt;user&gt;Olle Klint&lt;/user&gt;</pre>	<p>users name</p> <p>Data type: STRING</p> <p>Required: <b>Yes</b></p>
<pre>&lt;id&gt;12425&lt;/id&gt;</pre>	<p>Users ID – Used in future call to Fraktjakt</p> <p>Data type: STRING</p> <p>Required: <b>Ja</b></p>
<pre>&lt;key&gt;83f0a2481e84506df46dd16fd6a94b538c4d511e&lt;/key&gt;</pre>	<p>Users key – Used in future call to Fraktjakt</p> <p>Data type: STRING</p> <p>Required: <b>Ja</b></p>
<pre>&lt;/result&gt;</pre>	

# Testing using the API Test Page

You may use the forms found at [https://www.fraktjakt.se/xml/query\\_test](https://www.fraktjakt.se/xml/query_test) to test your XML. You can find this page in the left-menu in the integration settings called 'API Test page'.

Here you can try the following test forms for your XML-calls:

- Query API
- Requery API
- Order API, type 1
- Order API, type 2
- Shipment API
- Track & Trace API

There are several additional xml examples prepared with your Consignor ID & Key already in them (If you're logged in and you've selected your registered integration), just click submit to try them out.

The above forms are also available in the PROD API live production environment, in case you have reason to test your XML documents there. **Be aware that any Order API documents that you enter in the PROD API environment will generate real shipping orders.**

To test another XML document, copy and paste the entire contents of the XML document directly in the form at one of the above links.

Then press the "Submit" button. This will cause the same results to be displayed in your browser that you would have received from the *Fraktjakt API* if you had sent the XML document via the API.

# Tips when planning a parcel module integration

## Create a fall-back in case of problems

Although we strive to maintain a stable environment for our system, there still are circumstances beyond our control which can affect the stability and access to the system. Examples could be power outage, loss of broadband connection, hardware failure, etc.

We therefore recommend that you try and create a fall back in case you are not able to reach our system to retrieve parcel rates.

As an example, we recommend referring to simplified shipping rates in case your system is unable to retrieve parcel rates from us.

Remember to set your system to automatically send Error reports to us so that we can fix problems in a timely manner.

## Get faster response times

Everyone loves fast responses. Here is a list of things you can implement to get faster responses from Fraktjakt.

One method to increase response times is to configure the parcel module to only retrieve and display a minimum amount of shippers. The less data communication (retrieval requests) the quicker the response times.

Our system is also able to provide parcel rates for those e-commerce platforms that require parcel rates before a customer indicates the destination of which the product will be sent (such as filling out their postal address during purchase). If you set your company's address as the receiving address we are able to indicate a parcel rate before the purchase and provide an adjusted rate when customers fill in their address during purchase.

If parcel prices are not important however whether or not a certain parcel service is available to a certain address or not, you should send a `<no_prices>` element with the search.

If you are only going to use one shipping method, for example, if you use an AJAX query to update prices on a specific shipping method, then you should set your parcel module not to search for other shipping methods. Send instead `shipping_product_id` in the search xml.

If you think that providing or showing shipping agents (places where the customer can pick up their parcel shipments) then you should send the `<no_agents>` element. It quickens up the response times.

# Other integration possibilities

If you'd like, you can let your users save their Fraktjakt user names and passwords in your application. This will enable you to open an external browser window or an *iFrame* using the following URL:s:

You can add the format-parameter "redirect" to the URL:s

- *redirect=ecommerce* is a reserved parameter that you may optionally include in order to eliminate layout information from the Fraktjakt page that your user sees (in case you want to apply a different layout locally). Suitable when used in an iFrame.
- *redirect=clean* removes our wrapper with sidehead, side footer and menu and replaces them with "Powered by Fraktjakt" at the bottom. Suitable in an iFrame which you want to easily layout to fit the webshop.
- *redirect=raw* removes all layout and returns parts of a webpage.

## Log in to Fraktjakt account

[https://www.fraktjakt.se/account/login?  
login=USERNAME&password=PASSWORD&redirect=ecommerce](https://www.fraktjakt.se/account/login?login=USERNAME&password=PASSWORD&redirect=ecommerce)

## Change password

[https://www.fraktjakt.se/account/change\\_email?redirect=ecommerce](https://www.fraktjakt.se/account/change_email?redirect=ecommerce)

## Administration of the integration associated with the logged-in user

<https://www.fraktjakt.se/webshops/change?redirect=ecommerce>

## Administration of addresses

[https://www.fraktjakt.se/account/change\\_addresses?redirect=ecommerce](https://www.fraktjakt.se/account/change_addresses?redirect=ecommerce)

## Track a shipment based on tracking number and shipping company

Here is a way to track a shipment regardless of whether the shipment is purchased through Fraktjakt or not. To do this you'll need the shipments tracking number (TRACKING\_NUMER) and the shipping company's id number in Fraktjakt (SHIPPER\_ID), and these should be sent using the following link.

[https://www.fraktjakt.se/trace/create?  
tracking\\_number=TRACKING\\_NUMBER&shipper\\_id=SHIPPER\\_ID](https://www.fraktjakt.se/trace/create?tracking_number=TRACKING_NUMBER&shipper_id=SHIPPER_ID)

The shipping company's id number in Fraktjakt (SHIPPER\_ID) is as follows.

*Bussgods - 4, DHL - 5, FedEx - 1015, PostNord - 1, Schenker - 2, UPS - 1036*

## Information about what can be bought in Fraktjakt right now

This URL will generate an XML that shows what products are sold right now in Fraktjakt. It also has fields for description, terms and other things of interest for the customer.

[https://www.fraktjakt.se/shipping\\_products/xml\\_list](https://www.fraktjakt.se/shipping_products/xml_list)

When using Order API, call type 2 this call will tell you which shipping\_product\_id are available to use.

Notice! This is a list of all shipping services currently available for purchase in Fraktjakt. Before you use a service in Order Api 2 you have to make sure the service ships with given shipping addresses and that other product terms are met.

## More information on search results

By copying the shipping product ID from the `<shipping-product><id>` element that you receive in the XML from Fraktjakt's API, you can generate links to more information about the shipping product.

```
- <shipping_product>
```

```
<id>NR</id>
```

You can generate links to the following interesting pages on Fraktjakt using this shipping product ID (called NR below) :

### Terms and conditions for the shipping product

[https://www.fraktjakt.se/shipping\\_products/show\\_terms/NR](https://www.fraktjakt.se/shipping_products/show_terms/NR)

### Other information about the shipping product

[https://www.fraktjakt.se/shipping\\_products/show/NR](https://www.fraktjakt.se/shipping_products/show/NR)



# Common problems

- **Följande indata saknas - :xml**

You have not submitted through the Required http-parameter – 'xml' in your URL. The parameter consists of xml that contains all data necessary for the call.

- **My XML-file doesn't work no matter what I do!**

Remember that it has to be URL-encoded before you send it.

[https://en.wikipedia.org/wiki/Query\\_string#URL\\_encoding](https://en.wikipedia.org/wiki/Query_string#URL_encoding)

- **#<REXML::ParseException: No close tag for /shipment>**

You have left out a closing tag for the element specified in the error text.

- **Consignor Id ej giltig . / Consignor Id ej angivet.**

You have either forgot to include your Consignor ID or the current one isn't correct  
<https://testapi.fraktjakt.se/webshops/install>

- **Consignor nyckel (key) ej giltig. / Consignor nyckel (key) ej angivet.**

You have either forgot to include your Consignor key or the current key isn't correct  
<https://testapi.fraktjakt.se/webshops/install>

- **Okänd frakttjänst-id angivna i taggen shipping\_product\_id.**

The ID entered in `<shipping_product_id>` is not available in Fraktjakt. Enter a correct ID, like the one you got from your Query API call.

- **Frakttjänsten angivna i taggen shipping\_product\_id är icke köpbar.**

The current shipping product for `<shipping_product_id>` is not currently purchasable in Fraktjakt. Contact Fraktjakt's support to get updated information about the matter.

- **Det går inte att avgöra vilken Order API anropstyp som används.**

You have to include `<shipment_id>` and exclude `<parcels>` in calls for Order API type 1.

In Type 2 however, you must include `<parcels>` and/or `<commodities>`.

- **integrationen inte riktigt registrerad.**

Your account either lacks a registered integration or some required information about the integration are missing.

- **Recipient måste anges.**

An order cannot be created without the receiver name or company name in the elements `<name_to>` and `<company_to>`. One or the other have to be entered or both. There are other optional elements that can be sent in.

- **Vikten måste anges för paket 1. Textvärdet saknas.**

The weight of the parcels has to be included in calls for *Query API* and *Order API* type 2.

- **Ordern kunde inte skapas: (Längden måste anges för paket 1)**
- **Ordern kunde inte skapas: (Bredden måste anges för paket 1)**
- **Ordern kunde inte skapas: (Höjden måste anges för paket 1)**

The parcel length, width, height must be included in calls for *Order API* type 2.

- **Varuslagen/Innehållet måste anges.**

The commodities must be entered in calls for the *Order API*. This is done with the element, `<commodities>`. The *name* and *amount* of at least one commodity has to be included in the `<commodity>` element.

- **No response from Fraktjakt**

This problem is typically caused by a communication error. The most common sources of these errors are firewalls at web hotels. Verify that the firewall is permitting all traffic between your integration and Fraktjakt.

The problem may also be caused by a setting in your server that prohibits *cURL (libcurl)* from working properly. Try changing the communication method in your administration interface to *"fopen"*.

Another possible cause of this problem is that Fraktjakt is experiencing a temporary communication problem. In order to eliminate this as the cause of the problem, verify that you can connect to <https://testapi.fraktjakt.se> (TEST API) or <https://api.fraktjakt.se> (PROD API) in a web browser.

If you are experiencing problems ordering international shipping, the culprit could be an incorrect recipient address. Verify that your system has sent a valid recipient address to Fraktjakt.

The sender's or recipient's address (or both) must be located in Sweden.

- **Incorrect server**

Fraktjakt exposes two separate server addresses - one for the test environment (<https://testapi.fraktjakt.se>) and one for the production environment (<https://api.fraktjakt.se>). Make sure you are using a consignor ID and consignor key that are valid in the environment that you are communicating with.

- **You receive an XML file that contains the text, "503 Service Temporarily Unavailable".** There is probably a problem in the Fraktjakt server, and we are fixing the problem.

This problem may occur in the test environment, but it shouldn't be encountered in the production environment. The production environment has a very high degree of redundancy and failsafe measures.

- **The account that you were using in the test environment has stopped working**

Once in a while, the test environment must be purged to clean out erroneous data that has been generated in countless tests. You will have to create a new test account when this happens.

- **Orders from my OsCommerce integration are not reaching Fraktjakt.**

If you have installed the OsCommerce module for Fraktjakt, you must make sure that both files in the installation package are installed. The first file only makes it possible to present shipping prices in your integration. The second module (The Fraktdata module) allows orders to be sent to Fraktjakt.

- **Not all shipping products are shown in the results that are supposed to be shown.**

Check your settings for your webshop if you are searching as a private person or as a company(*swedish: "företag"*).

- **I can't see any prices for my orders in Fraktjakts order-list.**

You will not get any prices in the order-list if you test to search and buy shipments with the same postal-code as you have entered for your webshops shipping-address (godsadress). Your prices will be recalculated and displayed when you tries to buy your order.

Having the same sender- and receiver-postal-code is the way to tell Fraktjakt that you want to do a simplified search that is much faster, but don't save that much data.

You can just take it easy. When you buy your orders for real, you will be able to pay for it :)

# Error reporting

If you encounter problems when using the Fraktjakt API, you may send the entire XML document along with the response you received from the API to the following e-mail address: ['info@fraktjakt.se'](mailto:info@fraktjakt.se).

We will promptly analyse the problem and respond to the reply-to address of the e-mail.

Feel free to automatically generate mails to ['info@fraktjakt.se'](mailto:info@fraktjakt.se) when errors occur, but please ensure that there is someone available to receive our responses to such error reports.

## Support

### Contact us

[https://www.fraktjakt.se/om\\_fraktjakt/kontakt](https://www.fraktjakt.se/om_fraktjakt/kontakt)

Fraktjakt AB  
Gjuterigatan 9  
55318 Jönköping  
SWEDEN

VAT number: SE556751901101

E-post: [fraktjakt-api@googlegroups.com](mailto:fraktjakt-api@googlegroups.com). [api@fraktjakt.se](mailto:api@fraktjakt.se)

Web: <https://groups.google.com/d/forum/fraktjakt-api>

Webchat: [https://www.fraktjakt.se/om\\_fraktjakt/kontakt](https://www.fraktjakt.se/om_fraktjakt/kontakt)

Customer Service: [info@fraktjakt.se](mailto:info@fraktjakt.se)

### Customer support office hours

Monday – Thursday: 8.00 – 16.15 CET (Central European Time)

Friday: 9:00 – 16:15

Closed for lunch: 11:30 - 12:30

Saturday and Sunday: Closed

Swedish national holidays: Closed

# Appendix 1 - Language

The following languages are now supported in Fraktjakt:

Code	Language
sv	Swedish
en	English

The above language codes follow ISO 639-1. See details in Wikipedia:  
[https://en.wikipedia.org/wiki/List\\_of\\_ISO\\_639-1\\_codes](https://en.wikipedia.org/wiki/List_of_ISO_639-1_codes).

<language> elements are included in two parts of the XML for API calls:

- in the <consignor> element, so Fraktjakt knows which language to respond to the sender of the API call (identified directly or indirectly by the consignor block);
- in <address\_to> elements, so Fraktjakt knows which language to use when communicating with the recipients of shipments (normally customers of the consignor).

Support for English is currently only partial in Fraktjakt's responses to API calls, but it is complete in all correspondence with the receivers of shipments. If <sender\_email> elements are included in Order-API calls, the senders of the shipments also receive all of their communication in the specified language.

Fraktjakt's branding and customization features are fully functional in both Swedish and English

# Appendix 2 – Countries in Fraktjakt

The following countries can be selected in Fraktjakt API calls by submitting their codes (as shown in the table) in the appropriate address elements (See [Address element](#)). Note, however, that most shipping services do not serve all of these countries.

Fraktjakt can be used for shipping to or from Sweden, but either the originating address (<address\_from>), the destination address (<address\_to>), or both must be in Sweden.

The country codes follow ISO 3166-1 alpha-2 (See [https://en.wikipedia.org/wiki/ISO\\_3166-1\\_alpha-2](https://en.wikipedia.org/wiki/ISO_3166-1_alpha-2)).

Name	Code	Has Postal Codes
Aaland Islands	AX	YES
Afghanistan	AF	YES
Albania	AL	YES
Algeria	DZ	YES
American Samoa	AS	YES
Andorra	AD	YES
Angola	AO	YES
Anguilla	AI	YES
Antarctica	AQ	NO
Antigua and Barbuda	AG	NO
Argentina	AR	YES
Armenia	AM	YES
Aruba	AW	NO
Ascension Island	AC	YES
Australia	AU	YES
Austria	AT	YES
Azerbaijan	AZ	YES
Azores (Portuguese autonomous region)	PT	YES
Bahamas	BS	NO
Bahrain	BH	YES

Name	Code	Has Postal Codes
Bangladesh	BD	YES
Barbados	BB	YES
Belarus	BY	YES
Belgium	BE	YES
Belize	BZ	NO
Benin	BJ	NO
Bermuda	BM	YES
Bhutan	BT	YES
Bolivia	BO	NO
Bosnia and Herzegovina	BA	YES
Botswana	BW	NO
Bouvet Island	BV	NO
Brazil	BR	YES
British Indian Ocean Territory	IO	YES
Brunei Darussalam	BN	YES
Bulgaria	BG	YES
Burkina Faso	BF	NO
Burundi	BI	NO
Cambodia	KH	YES

Name	Code	Has Postal Codes
Cameroon	CM	NO
Canada	CA	YES
Canary Islands	IC	NO
Cape Verde	CV	YES
Cayman Islands	KY	YES
Central African Republic	CF	NO
Ceuta and Melilla	EA	NO
Chad	TD	YES
Chile	CL	YES
China	CN	YES
Christmas Island	CX	YES
Clipperton Island	CP	NO
Cocos (Keeling) Islands	CC	YES
Colombia	CO	YES
Comoros	KM	NO
Congo	CG	NO
Congo, Democratic Republic of the	CD	YES
Cook Islands	CK	NO
Costa Rica	CR	YES
Croatia	HR	YES
Cuba	CU	YES
Curacao	CW	NO
Cyprus	CY	YES
Czech Republic	CZ	YES
Denmark	DK	YES
Diego Garcia	DG	NO
Djibouti	DJ	NO
Dominica	DM	NO
Dominican Republic	DO	YES
Ecuador	EC	YES
Egypt	EG	YES
El Salvador	SV	YES
Equatorial Guinea	GQ	NO
Eritrea	ER	NO
Estonia	EE	YES
Ethiopia	ET	YES
Falkland Islands (Malvinas)	FK	YES
Faroe Islands	FO	YES
Fiji	FJ	NO
Finland	FI	YES

Name	Code	Has Postal Codes
France	FR	YES
France, Metropolitan	FX	NO
French Guiana	GF	YES
French Polynesia	PF	YES
French Southern Territories	TF	NO
Gabon	GA	YES
Gambia	GM	NO
Georgia	GE	YES
Germany	DE	YES
Ghana	GH	NO
Gibraltar	GI	YES
Greece	GR	YES
Greenland	GL	YES
Grenada	GD	NO
Guadeloupe	GP	YES
Guam	GU	YES
Guatemala	GT	YES
Guernsey	GG	YES
Guinea	GN	YES
Guinea-Bissau	GW	YES
Guyana	GY	NO
Haiti	HT	YES
Heard Island and McDonald Islands	HM	YES
Honduras	HN	YES
Hong Kong	HK	NO
Hungary	HU	YES
Iceland	IS	YES
India	IN	YES
Indonesia	ID	YES
Iran, Islamic Republic of	IR	YES
Iraq	IQ	YES
Ireland	IE	YES
Isle of Man	IM	YES
Israel	IL	YES
Italy	IT	YES
Ivory Coast	CI	NO
Jamaica	JM	YES
Japan	JP	YES
Jersey	JE	YES

Name	Code	Has Postal Codes
Jordan	JO	YES
Kazakhstan	KZ	YES
Kenya	KE	YES
Kiribati	KI	NO
Korea, Democratic People's Republic of	KP	NO
Korea, Republic of	KR	YES
Kosovo (use Serbia)	XK	YES
Kuwait	KW	YES
Kyrgyzstan	KG	YES
Lao People's Democratic Republic	LA	YES
Latvia	LV	YES
Lebanon	LB	YES
Lesotho	LS	YES
Liberia	LR	YES
Libyan Arab Jamahiriya	LY	YES
Liechtenstein	LI	YES
Lithuania	LT	YES
Luxembourg	LU	YES
Macao	MO	NO
Macedonia	MK	YES
Madagascar	MG	YES
Malawi	MW	NO
Malaysia	MY	YES
Maldives	MV	YES
Mali	ML	NO
Malta	MT	YES
Marshall Islands	MH	YES
Martinique	MQ	YES
Mauritania	MR	NO
Mauritius	MU	NO
Mexico	MX	YES
Micronesia, Federated States of	FM	YES
Moldova	MD	YES
Monaco	MC	YES
Mongolia	MN	YES
Montenegro	ME	YES
Montserrat	MS	YES

Name	Code	Has Postal Codes
Morocco	MA	YES
Mozambique	MZ	YES
Myanmar	MM	YES
Namibia	NA	YES
Nauru	NR	NO
Nepal	NP	YES
Netherlands	NL	YES
Netherlands Antilles	AN	NO
New Caledonia	NC	YES
New Zealand	NZ	YES
Nicaragua	NI	YES
Niger	NE	YES
Nigeria	NG	YES
Niue	NU	NO
Norfolk Island	NF	YES
Northern Mariana Islands	MP	YES
Norway	NO	YES
Oman	OM	YES
Pakistan	PK	YES
Palau	PW	YES
Palestinian National Authority	PS	NO
Panama	PA	YES
Papua New Guinea	PG	YES
Paraguay	PY	YES
Peru	PE	YES
Philippines	PH	YES
Pitcairn	PN	YES
Poland	PL	YES
Portugal	PT	NO
Puerto Rico	PR	YES
Qatar	QA	NO
Réunion	RE	YES
Romania	RO	YES
Russia	RU	YES
Rwanda	RW	NO
Saint Barthélemy	BL	YES
Saint Helena	SH	YES
Saint Kitts and Nevis	KN	NO
Saint Lucia	LC	YES
Saint Martin (French part)	MF	YES



Name	Code	Has Postal Codes
Saint Pierre and Miquelon	PM	YES
Saint Vincent and the Grenadines	VC	YES
Samoa	WS	NO
San Marino	SM	YES
Sao Tome and Principe	ST	NO
Saudi Arabia	SA	YES
Senegal	SN	YES
Serbia	RS	YES
Serbia and Montenegro (ended 2006)	CS	NO
Seychelles	SC	NO
Sierra Leone	SL	NO
Singapore	SG	YES
Slovakia	SK	YES
Slovenia	SI	YES
Solomon Islands	SB	NO
Somalia	SO	NO
South Africa	ZA	YES
South Georgia and the South Sandwich Islands	GS	YES
Spain	ES	YES
Sri Lanka	LK	YES
Sudan	SD	YES
Suriname	SR	NO
Svalbard and Jan Mayen	SJ	YES
Swaziland	SZ	YES
Sweden	SE	YES
Switzerland	CH	YES
Syrian Arab Republic	SY	NO
Taiwan, Province of China	TW	NO
Tajikistan	TJ	YES
Tanzania, United Republic of	TZ	NO

Name	Code	Has Postal Codes
Thailand	TH	YES
Timor-Leste	TL	NO
Togo	TG	NO
Tokelau	TK	NO
Tonga	TO	NO
Trinidad and Tobago	TT	YES
Tristan da Cunha	TA	NO
Tunisia	TN	YES
Turkey	TR	YES
Turkmenistan	TM	YES
Turks and Caicos Islands	TC	YES
Tuvalu	TV	NO
Uganda	UG	NO
Ukraine	UA	YES
United Arab Emirates	AE	NO
United Kingdom	GB	YES
United States	US	YES
United States Minor Outlying Islands	UM	NO
Uruguay	UY	YES
Uzbekistan	UZ	YES
Vanuatu	VU	NO
Vatican City State	VA	YES
Venezuela	VE	YES
Viet Nam	VN	YES
Virgin Islands, British	VG	YES
Virgin Islands, U.S.	VI	YES
Wallis and Futuna	WF	YES
Western Sahara	EH	NO
Yemen	YE	NO
Zambia	ZM	YES
Zimbabwe	ZW	NO