



Punter's Call

Resistance at 3600

The Nifty opened on a firm note and is currently trading near its 3585 resistance level. Intra-day the index should find resistance in the 3585-3595 region and it has a support at 3565. In the near term the Nifty should continue to trade in the 3600-3545 range and on a cross above 3600 it is likely to move to higher levels. On a break below 3545, the next support is at the 20-DMA at 3527. As long as the Nifty closes below 3600, the short-term bias is down.

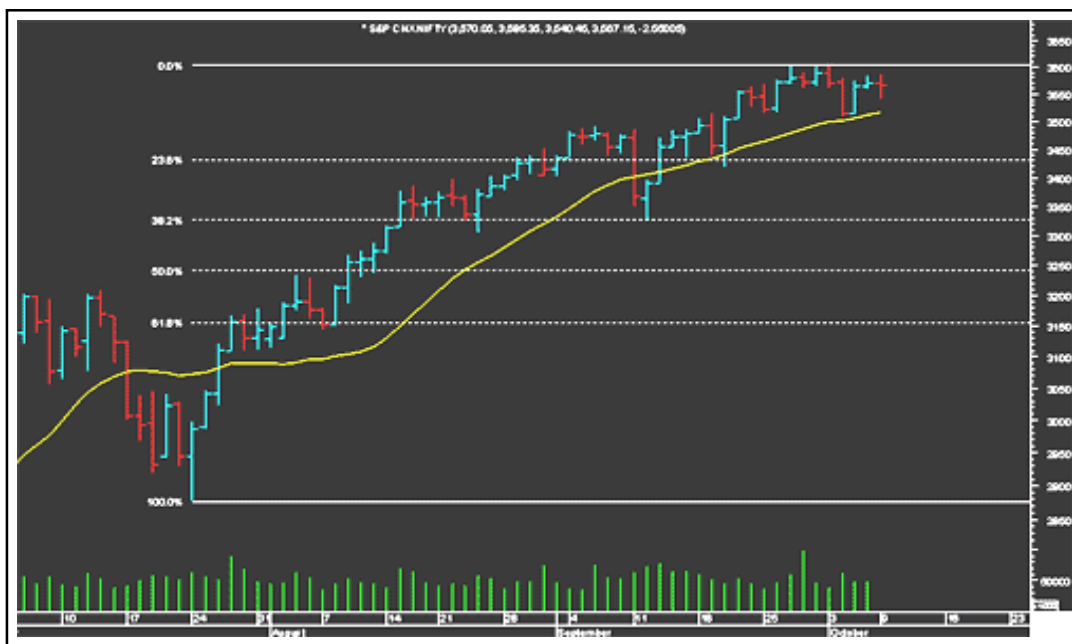
Tisco looks weak and on the downside it could test Rs515. The stock faces a resistance at Rs532. Wipro is trading in the Rs510-520 range. ACC has a support at Rs975 and it faces a resistance at Rs998.

Updated on 12:00 noon

	Advance	Decline
BSE	1289	566
NSE	732	162
Moving Average (hourly)		
20(S)	3570	100 (S) 3550
40(E)	3566	200 (S) 3494

S: Simple Moving Average

E: Exponential Moving Average



Short Term Trend

	Target	Trend	Reversal	Support/Resistance
Short term (Nifty)	3500	↓	Up above 3600	3545 / 3600

Icon guide

Up	Down	Downswing matures	Upswing matures
----	------	-------------------	-----------------

Medium Term Trend

	Target	Trend	Reversal	Support/Resistance
Medium term (Nifty)	3620	↑	Down below 3400	3400 / 3600

Icon guide

↑ Up	↓ Down	↘ Downswing matures	↗ Upswing matures
------	--------	---------------------	-------------------

Smart Charts > Open Long Calls

Date	Recommendation	Stop Loss/ Reversal (Intra-day)	Stop Loss/ Reversal (Closing)	Buy Price	Closing Price	Potential % P/L at CMP	Targets
09-10-06	TV Today	-	69.4	77.0	76.8	0%	90-92
09-10-06	Henkel	-	26.4	28.6	28.6	0%	33
09-10-06	Fedders Lloyd	-	106.7	128.0	127.3	-1%	165-170
09-10-06	Clutch Auto	-	114.4	127.5	129.0	1%	150-155
09-10-06	D-Link	-	89.7	97.8	100.2	3%	112
09-10-06	CEAT	-	115.4	133.0	134.6	1%	170
09-10-06	Tube Investment	-	78.0	88.0	86.6	-2%	110
09-10-06	McDowell	-	594.4	629.5	624.1	-1%	700-720
09-10-06	Dewan Housing Finance	-	68.4	75.8	80.5	6%	90-93
09-10-06	Nocil	-	21.7	25.5	27.3	7%	33-35
05-10-06	Hero Honda	-	694.0	757.0	752.9	-1%	860-880
03-10-06	Mahindra & Mahindra	-	629.4	692.0	691.1	0%	749-809
28-09-06	Gateway Distriparks	-	148.4	164.0	162.8	-1%	180-195
25-09-06	Satyam	-	396.4	417.0	406.2	-3%	460-490
19-09-06	Tricom India	-	197.4	215.0	208.8	-3%	250
19-09-06	Hindustan Motor	-	37.7	41.8	40.7	-3%	46-50
19-09-06	Exide Industries	-	38.7	41.8	39.4	-6%	46-50
19-09-06	Sterlite Optical	-	158.4	174.0	170.2	-2%	200-206
18-09-06	Finolex Industries	-	84.4	99.4	97.5	-2%	129-135
14-09-06	Balrampur Chini	-	90.0	98.0	100.0	2%	115
14-09-06	SREI International	-	47.0	53.0	52.8	0%	65
14-09-06	Mercator Lines	-	39.4	43.0	42.4	-2%	50-52
13-09-06	Bharti	-	449.4	436.6	463.9	6%	510-540
08-09-06	Jindal Saw	-	294.4	323.0	358.7	11%	379
08-09-06	LIC Housing Finance	-	153.0	166.0	175.6	6%	190
08-09-06	Nalco	-	198.0	214.0	215.4	1%	250
08-09-06	Nirma	-	374.4	391.2	395.9	1%	424
04-09-06	Praj Industries	159.7	-	183.5	190.6	4%	214
18-08-06	Aptech Training	-	110.0	123.0	143.1	16%	155

Advantage Options

Date	Name	Expiry	Reco Price	Strike Price	CMP (Rs)	Target (Rs)	Stop Loss (Rs)
25-09-06	Buy Satyam Oct Call	26-Oct	12.5	430	7.95	30	4

Momentum Calls > Open Long Calls

For the short term—1 to 5 days

Stock	Product type	Action date	Stop loss	Closing Price	Target 1	Target 2
Tulip IT	Cash / Future	09-10-06	319.4	327.6	340	350
Hindustan Zinc	Cash / Future	09-10-06	627.4	639.0	633	648
NTPC	Cash / Future	03-10-06	128.4	129.6	138	143
IPCL	Cash / Future	21-09-06	299.7	309.0	325	339

NOTE: Kindly note that all stop losses in Momentum Calls are on an intra-day basis.

Momentum Calls > Open Short Calls

For the short term—1 to 5 days

Stock	Product type	Action date	Stop loss	Closing Price	Target 1	Target 2
Nifty Future	Cash / Future	05-10-06	3595	3567	3520	-
Wipro	Cash / Future	04-10-06	528	516	490	-

NOTE: Kindly note that all stop losses in Momentum Calls are on an intra-day basis.

[Home](#)

Disclaimer

*This document has been prepared by Sharekhan Ltd. This Document is subject to changes without prior notice and is intended only for the person or entity to which it is addressed to and may contain confidential and/or privileged material and is not for any type of circulation. Any review, retransmission, or any other use is prohibited. Kindly note that this document does not constitute an offer or solicitation for the purchase or sale of any financial instrument or as an official confirmation of any transaction.

Though disseminated to all the customers simultaneously, not all customers may receive this report at the same time. SHAREKHAN will not treat recipients as customers by virtue of their receiving this report.

The information contained herein is from publicly available data or other sources believed to be reliable. While we would endeavour to update the information herein on reasonable basis, SHAREKHAN, its subsidiaries and associated companies, their directors and employees ("SHAREKHAN and affiliates") are under no obligation to update or keep the information current. Also, there may be regulatory, compliance, or other reasons that may prevent SHAREKHAN and affiliates from doing so. We do not represent that information contained herein is accurate or complete and it should not be relied upon as such. This document is prepared for assistance only and is not intended to be and must not alone be taken as the basis for an investment decision. The user assumes the entire risk of any use made of this information. Each recipient of this document should make such investigations as it deems necessary to arrive at an independent evaluation of an investment in the securities of companies referred to in this document (including the merits and risks involved), and should consult its own advisors to determine the merits and risks of such an investment. The investment discussed or views expressed may not be suitable for all investors. We do not undertake to advise you as to any change of our views. Affiliates of Sharekhan may have issued other reports that are inconsistent with and reach different conclusion from the information presented in this report.

This report is not directed or intended for distribution to, or use by, any person or entity who is a citizen or resident of or located in any locality, state, country or other jurisdiction, where such distribution, publication, availability or use would be contrary to law, regulation or which would subject SHAREKHAN and affiliates to any registration or licensing requirement within such jurisdiction. The securities described herein may or may not be eligible for sale in all jurisdictions or to certain category of investors. Persons in whose possession this document may come are required to inform themselves of and to observe such restriction.

SHAREKHAN & affiliates may have used the information set forth herein before publication and may have positions in, may from time to time purchase or sell or may be materially interested in any of the securities mentioned or related securities. SHAREKHAN may from time to time solicit from, or perform investment banking, or other services for, any company mentioned herein. Without limiting any of the foregoing, in no event shall SHAREKHAN, any of its affiliates or any third party involved in, or related to, computing or compiling the information have any liability for any damages of any kind. Any comments or statements made herein are those of the analyst and do not necessarily reflect those of SHAREKHAN.*