

DAILY | FUNDAMENTAL



OUR REPORTS

Fundamental

Company Report
Sector Report
Theme Based Report

Daily & Weekly

Fundamental Market Update
Technical Market Update
Derivative Market Update
Currency Report
Debt Mutual Fund Report

Monthly

India Strategy Report
IIP Report
Auto Sector Update
Cement Sector Update
Metal Sector Update
Telecom Sector Update
Insurance and Mutual Fund Report
Inflation Report
Exports-Imports Report

Quarterly

India and Global Strategy Report
India Economy Report
Company Result Expectation
Company Result Analysis

Others

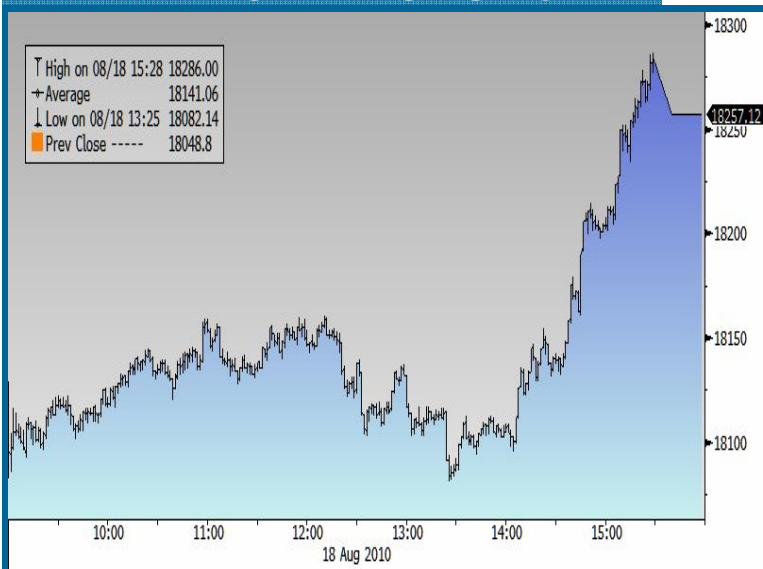
Event Based Report
RBI Monetary Review Report
Annual Budget Expectation Report
Annual Budget Review Report

August 19, 2010

Sutapa Roy

E-mail: s-roy@microsec.in

INTRA DAY CHART OF SENSEX



Indian stock market opened on a flat note following the weak Asian markets. It traded in a narrow range till the mid-session. However, it rallied sharply in last one hour of trade, led by buying in IT, Metal, FMCG, Financial, Oil & Gas and Health Care stocks and ended the session on a strong note. The Sensex gained more than 200 points for the first time since August 2, 2010. But the Nifty have still been in a range.

Nifty closed at 5,479.15, up by 65.00 points or 1.20 percent over the previous day closing of 5,414.15, after witnessing a low of 5,416.25 and a high of 5,487.95. Sensex closed at 18,257.12, up by 208.27 points or 1.15 percent over the previous day closing of 18,048.85. It touched an intraday low of 18,067.67 and high of 18,286.00.

MARKET TURNOVER (RS. CR)

NAME	LAST	PREVIOUS DAY
NSE CASH	15389.47	14803.67
NSE F&O	105674.05	79558.83
BSE TOTAL	5527.03	5000.97

The markets' breadth was positive. Out of 3,083 stocks traded, 1,671 stocks advanced, 1,272 stocks declined and 140 remained unchanged. In Sensex, 22 stocks advanced and 8 stocks declined.

Among the sectors, BSE IT, BSE FMCG and BSE Metal were the main gainers of the day, which increased by 1.96 percent, 1.45 percent and 1.43 percent respectively.

NIFTY TOP TURNOVERS

COMPANY	LAST PRICE	SHARE TRADED	TOTAL TURNOVER (Rs. Cr)
TATAMOTORS	1040.80	6618229	687.10
RELIANCE	963.75	5682424	548.79
BAJAJCORP	754.00	5863899	450.50
SBIN	2817.00	1523049	426.62
HDFCBANK	2193.00	1942217	422.34

In BSE IT sector, Mphasis, HCL Technologies and Rolta India increased by 3.85 percent, 3.17 percent and 2.69 percent respectively. In BSE FMCG sectors, Godrej Consumer Products, ITC and Mcleod Russel India increased by 3.18 percent, 2.01 percent and 1.76 percent respectively. In BSE Metal Sector, Hindalco Industries, Tata Steel and Jindal Saw increased by 4.58 percent, 1.61 percent and 1.46 percent respectively.

NIFTY TOP GAINERS

COMPANY	LAST PRICE	CHANGE	% CHANGE
HINDALCO	177.00	8.85	5.26
SUNPHARMA	1778.20	71.50	4.19
HCLTECH	411.45	15.10	3.81
RANBAXY	472.00	17.15	3.77
HDFCBANK	2193.00	71.95	3.39

OUTLOOK

Indian market is likely to remain range bound. However, select mid and small cap stocks may continue to out perform. Stocks in the textile and auto ancillary space may rise as appetite for the companies of these sectors increase. Textile stocks may suddenly become the favor as being an under owned sector in major portfolios, funds may bet on them.

NIFTY TOP LOSERS

COMPANY	LAST PRICE	CHANGE	% CHANGE
SUZLON	49.45	-1.70	(3.32)
IDEA	69.95	-1.10	(1.55)
HDFC	622.00	-2386.95	(1.27)
RCOM	164.00	-2.00	(1.20)
SIEMENS	700.00	-7.95	(1.12)

DOMESTIC INDICES

NAME	LAST PRICE	CHANGE	% CHANGE
SENSEX	18257.12	208.27	1.15
NIFTY	5479.15	65.00	1.20
BSE MID-CAP	7760.00	65.61	0.85
BSE SMALL-CAP	9786.70	68.20	0.70
NSE CNX MIDCAP INDEX	8832.85	77.95	0.89

SECTORAL INDICES

NAME	LAST PRICE	CHANGE	% CHANGE
AUTO	8873.38	111.47	1.27
CAPITAL GOODS	14562.18	46.49	0.32
FMCG	3355.22	48.01	1.45
METAL	15292.89	215.90	1.43
OIL & GAS	10072.73	27.07	0.27
HEALTHCARE	5531.54	53.88	0.98
POWER	3095.28	-0.09	(0.00)
REALTY	3653.74	10.23	0.28
CONSUMER DURABLES	5701.68	-11.47	(0.20)
BANK	12388.98	141.70	1.16
IT	5567.53	106.84	1.96

GLOBAL INDICES

NAME	LAST PRICE	CHANGE	% CHANGE
DOW JONES	10405.85	103.84	1.01
NASDAQ	2209.44	27.57	1.26
S&P 500	1092.54	13.16	1.22
FTSE	5316.40	-34.17	(0.64)
CAC	3650.85	-12.51	(0.34)
DAX	6194.98	-11.42	(0.18)
MEXICO BOLSA	32286.08	166.20	0.52
BRAZIL BOVESPA	67583.77	881.88	1.32
RUSSIAN RTS	1455.85	-8.65	(0.59)
NIKKEI 225	9240.54	78.86	0.86
HANG SENG	21022.73	-114.70	(0.54)
TAIWAN TAIEX	7924.10	-6.99	(0.09)
SHANGHAI	2666.30	-5.59	(0.21)
KOSPI	1761.99	6.96	0.40
FTSE BURSA MALAYSIA KLCI	1385.51	7.04	0.51
JAKARTA COMPOSITE	3072.09	19.49	0.64
PSEi - PHILIPPINE SE	3534.80	32.55	0.93
STOCK EXCH OF THAI	880.02	14.24	1.64

INDUSTRIAL METALS & ENERGY MARKETS

NAME	LAST PRICE	CHANGE	% CHANGE
COPPER (USD/T)	7372.75	-9.25	(0.13)
ALUMINUM (USD/T)	2130.00	-11.00	(0.51)
ZINC (USD/T)	2129.50	6.50	0.31
LEAD (USD/T)	2138.00	8.00	0.38
OIL (USD/BBL)	74.91	-0.89	(1.14)
NATURAL GAS (USD/MMBTU)	4.27	0.00	0.05

PRECIOUS METALS

NAME	LAST PRICE	CHANGE	% CHANGE
GOLD (USD/OZ)	1224.05	-0.80	(0.07)
SILVER (USD/OZ)	18.46	-0.05	(0.28)

INDUSTRY INDICES

NAME	LAST PRICE	CHANGE	% CHANGE
BALTIC DRY INDEX	2515.00	27.00	1.09
BBG WORLD IRON/STEEL IDX	268.24	1.06	0.40

CURRENCIES

NAME	LAST PRICE	CHANGE	% CHANGE
USD-INR	46.58	-0.07	(0.14)
EUR-INR	60.03	-0.05	(0.09)
GBP-INR	72.86	0.14	0.19
INR-JPY	1.83	0.00	(0.16)

INSTITUTIONAL FLOW IN Cr (17/08/2010)

INSTRUMENT	PURCHASE	SALE	NET
FII (p)	3143.25	2739.16	404.09
DII	1187.88	1588.00	(400.12)
MUTUAL FUND	565.40	735.30	(169.90)

FII DERIVATIVE SEGMENT IN Cr (17/08/2010)

INSTRUMENT	PURCHASE	SALE	NET
INDEX FUTURE	1012.48	851.53	160.95
INDEX OPTION	5143.97	4092.60	1051.36
STOCK FUTURE	2506.44	2632.27	(125.82)
STOCK OPTION	398.90	431.87	(32.97)

BULK & BLOCK DEALS

http://www.bseindia.com/mktlive/market_summ/bulk_deals.asp

http://www.bseindia.com/mktlive/market_summ/block_deals.asp

- ◆ NIIT Ltd launched a spectrum of products and solutions for the schools in Jaipur, under the aegis of 'NIIT eGURU'. NIIT eGURU is a school learning solution that aims at making the vital process of teaching and learning simpler. It is an integrated and comprehensive teaching, learning and education resource planning solution for the schools.
- ◆ Moser Baer Projects (MBPPL), a developer of power generation facilities with a diverse pipeline of thermal, solar and hydroelectric power projects attracted an investment of INR13.5 billion (approximately USD300 million) from The Blackstone Group. MBPPL plans to commission 5,000 MW by 2016 comprising of 4,000 MW of thermal, 500 MW of solar and 500 MW of hydro capacity. Blackstone's investment will enable MBPPL to emerge as a leading player in the India energy sector over the next few years.
- ◆ Gillette India Ltd. reported fourth-quarter profit of INR186.1 million, compared with INR381.2 million rupees a year earlier.
- ◆ Bajaj Corp Limited debuted on the National Stock Exchange, opening at a premium of over 15 percent to its issue price of INR660 at INR760. It was trading up 18.40 percent at INR781.45 in early-morning trading. On the Bombay Stock Exchange, the company listed at INR730, reflecting a gain of 10.60 percent over the issue price. The company is also planning to enter four non-haircare segments through both the organic and inorganic routes.
- ◆ Punjab National Bank launched "PNB Festival Bonanza Offer 2010" for housing loans and car loans. Under the offer, the bank will offer housing loans up to INR50 lakhs at a discounted interest rate of 8.50% under fixed interest rate option (three years) across all repayment tenors, with a proviso that the applicable rate will be base rate in case it crosses 8.5%. Besides full waiver of processing (upfront) fee and documentation charges, the margin also stands reduced to 15% for housing loans up to INR20 lakhs.
- ◆ THL Aluminum and Vedanta Resources Plc along with Sesa Goa Ltd have announced an open offer to the shareholders of Cairn India Ltd to acquire up to an aggregate of 383,985,368 equity shares of face value of INR10 each, constituting 20% Emerging Voting Capital, at a price of INR355 per share. The offer opens on October 11 and closes on October 30.
- ◆ Tantia Constructions Ltd received a project from Chief Engineer, Metro Railway, Kolkata for 'Execution of Civil Engineering Works of PSC via duct between Noapara and Dum Dum Cantonment and various Civil works at Noapara in connection with integration of Airport Line with Metro Railway for worth INR50.53 crore.
- ◆ Steel Strips Wheels Ltd received export business of nearly 5,000 wheels from two different companies' in Germany and UK. One of this company's is a leading tyre & wheel assembler catering to the OE trailer market in Europe. The second company caters to after market in Europe. The business will earn foreign exchange to the tune of INR3 million. SSWL is confident of getting repeat business from these organisations in coming months.
- ◆ Reliance Broadcast Network Ltd completed its final negotiations with CBS Studios Inc, a division of CBS Corporation, and executed the joint venture agreement in connection with owning and /or, operating, marketing and promoting a portfolio of primary linear pre-programmed television channels in India, Nepal, Bhutan, Sri Lanka, Bangladesh, the Maldives and Pakistan. The company's wholly owned subsidiary and CBS Studios will have an equal 50% participation in the JV which is a private limited company.
- ◆ Indian Oil Corp canceled a tender buy crude for loading in October, its third tender of the month.

CORPORATE ACTION BONUS / RIGHTS / STOCK SPLIT / ADR & GDR / FCCB / M&A / WARRANTS ETC.

COMPANY	RECORD DATE	Ex-DATE	DETAILS
Chennai Petroleum Corporation Limited	-	20/08/2010	Annual General Meeting and Dividend INR12 Per Share
GTL Infrastructure Limited	-	20/08/2010	Annual General Meeting
Zee News Limited	-	20/08/2010	Annual General Meeting
Dhunseri Petrochem & Tea	-	20/08/2010	Annual General Meeting and Dividend INR4 Per Share
Garden Silk Mills Limited	-	20/08/2010	Dividend INR1.80 Per Share

OTHER EVENTS

- ◆ India's weekly Food and Fuel Inflation data for the week ended August 7, 2010.
- ◆ The U.S. Initial Jobless Claims data for the week ended August 14, 2010.
- ◆ The U.K. Retail Sales data for the month of July 2010.

Disclaimer

The investments discussed or recommended in this report may not be suitable for all investors. Investors should use this research as one input into formulating an investment opinion. Additional inputs should include, but are not limited to, the review of other. This is not an offer (or solicitation of an offer) to buy/sell the securities/instruments mentioned or an official confirmation. Microsec Capital Limited is not responsible for any error or inaccuracy or for any losses suffered on account of information contained in this report. This report does not purport to be offer for purchase and sale of share/ units. We and our affiliates, officers, directors, and employees, including persons involved in the preparation or issuance of this material may: (a) from time to time, have long or short positions in, and buy or sell the securities thereof, of company (ies) mentioned herein or (b) be engaged in any other transaction involving such securities and earn brokerage or other compensation discussed herein or act as advisor or lender I borrower to such company (ies) or have other potential conflict of interest with respect to any recommendation and related information and opinions. The same persons may have acted upon the information contained here. No part of this material may be duplicated in any form and/or redistributed without Microsec Capital Limited' prior written consent.