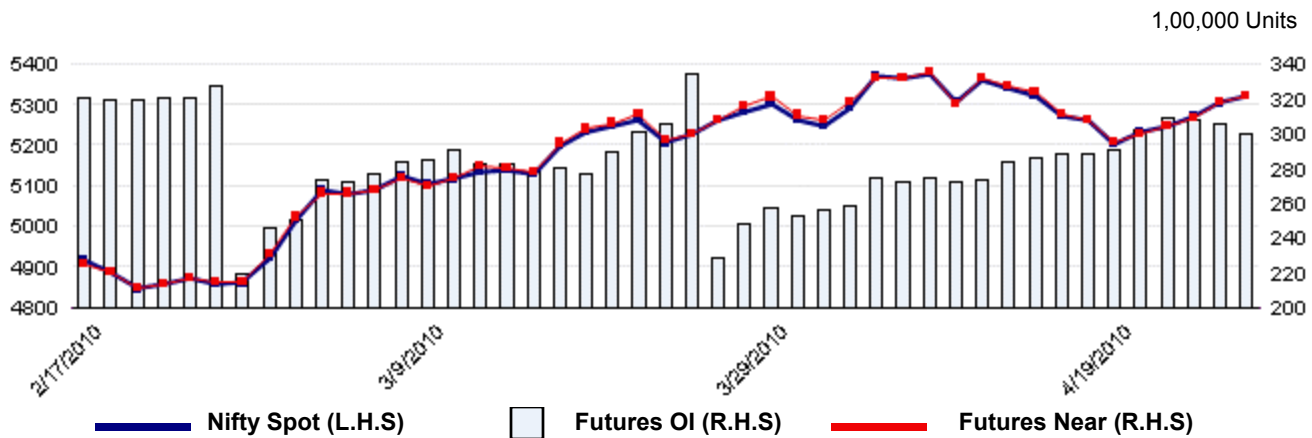


## Nifty Spot with Nifty Near Month Fut and Nifty Fut OI



### Market Wrap & Outlook

Markets closed with marginal gains yesterday. It was the fifth consecutive positive closing. There was however unwinding of long positions as Nifty Fut OI declined by 12128 contracts and the Nifty Apr Fut closed at a discount of 2.55pts as against a premium of 0.90pts in the previous session. Derivative volumes were lower compared to the previous session. Nifty IV dipped marginally to 19.11% but nevertheless continues to remain above the HV of 9.86%. Nifty OI PCR slid to 1.43. In the index call option segment, maximum OI was seen in the 5400 strikes indicating that these are strong resistances for the time being.

Coming to the Stock Futures segment, fresh longs were seen in Indian Bank, GT Offshore, Jain Irrigation and Sterlite. Shorts were built in Sun Pharma, McLeod Russell, Balrampur and DLF. With the Singapore Nifty trading lower, we could open on a slightly weak note. Immediate supports to watch for further weakness are at 5300.

### Strategy for the day

Scrip	Strategy	Entry At	Stop Loss	Target

### Nifty Synopsis

Nifty Index	26-Apr-10	23-Apr-10	22-Apr-10	19-Apr-10	25-Mar-10	Last Expiry	Chg (T -(T-1))	Chg (T -(T-1)) %
Nifty	5,322.45	5,304.10	5,269.35	5,203.65	5,260.40	5,260.40	18.35	0.35
Near Basis	-2.55	0.90	-3.95	3.75	0.25	0.25	-3.45	-383.40
C-o-C	0.33	0.78	-3.91	2.63	2.50	2.50	-0.52	-61.17
Fut(OI)*	598,766	610,894	614,798	580,230	457,509	457,509	-12,128	-1.99
Fut(Vol)*	363,285	510,737	890,735	629,608	749,870	749,874	-147,452	-28.87
Fut(Vol)**	9,678.65	13,517.09	23,527.66	16,359.41	19,624.00	19,624.00	-3,838.44	-28.40
OI/Vol	1.65	1.20	0.69	0.92	0.61	0.61	0.45	37.80

\* - contracts \*\* - Crores

### Nifty Sentiment Indicators

Indicator	26-Apr-10	23-Apr-10	22-Apr-10	19-Apr-10	25-Mar-10	Last Expiry	Chg (T -(T-1))	Chg (T -(T-1)) %
PCR OI	1.43	1.45	1.40	1.27	1.41	1.41	-0.02	-1.09
PCR Vol	0.99	0.99	0.97	0.86	0.92	0.92	0.00	-0.30
IV Call	17.03	17.64	16.87	20.09	15.00	15.00	-0.61	-3.47
IV Put	21.19	21.18	19.84	22.61	18.63	18.63	0.01	0.06
Hist.Vol	9.86	11.29	12.35	14.16	9.96	9.96	-1.43	-12.67

### Market Snapshot

Indicator	26-Apr-10	23-Apr-10	22-Apr-10	19-Apr-10	25-Mar-10	Last Expiry	Chg (T -(T-1))	Chg (T -(T-1)) %
Vol(Contract)	864,458	748,814	884,088	593,693	1,329,069	1,329,069	115,644	15.44
Vol(Crs)	30,407.38	27,160.99	32,595.72	22,445.94	44,818.57	44,818.57	3,246.39	11.95
OI(Contract)	1,496,616	1,486,334	1,446,224	1,343,812	978,528	978,528	10,282	0.69
OI(Crs)	50,018.63	49,681.10	48,335.53	43,972.77	31,099.41	31,099.41	337.53	0.68
PCR(OI)	0.29	0.29	0.29	0.26	0.29	0.29	0.00	-0.26
PCR(Vol)	0.31	0.32	0.33	0.38	0.40	0.40	-0.01	-4.47

**Institutional Flows (Rs.Crs.) as On 26-04-2010**

	FII					Mutual Fund
	Index Fut	Stock Fut	Index Opt	Stock Opt	Cash	Cash
Buy	1,615.19	3,816.27	4,534.85	408.11	3,241.50	0.00
Sell	1,548.91	3,471.27	4,580.05	415.64	2,361.60	0.00
Net	66.28	345.00	-45.20	-7.53	880.00	0.00
OI	14,708.60	32,465.27	43,857.34	1,189.84	-	-
Chg In OI	-153.06	499.29	1,112.86	41.25	-	-

**Vol and OI Analysis**

Vol Breakup	26-Apr-10	23-Apr-10	22-Apr-10	19-Apr-10	25-Mar-1	Last Expiry	Chg (T-(T-1))	Chg (T-(T-1)) %
Index Fut	11,253.83	15,886.33	26,479.88	18,602.60	21,891.41	21,891.41	-4,632.50	-29.16
Stock Fut	26,504.09	22,346.09	26,818.92	18,263.18	41,585.89	41,585.89	4,158.01	18.61
Index Opt	40,494.00	58,933.84	86,688.74	67,165.07	70,187.37	70,187.37	-18,439.83	-31.29
Stock Opt	3,903.29	4,814.90	5,776.80	4,182.77	3,232.67	3,232.67	-911.62	-18.93
Total	82,155.21	101,981.16	145,764.34	108,213.62	136,897.34	136,897.34	-19,825.95	-60.78

OI Breakup (In cr.)	26-Apr-10	23-Apr-10	22-Apr-10	19-Apr-10	25-Mar-10	Last Expiry	Chg (T-(T-1))	Chg (T-(T-1)) %
Index Fut	18,010.68	18,317.82	17,976.50	16,837.72	13,577.04	13,577.04	-307.14	-1.68
Stock Fut	40,832.97	40,510.44	39,343.79	35,862.85	29,667.70	29,667.70	322.53	0.80
Index Opt	59,822.68	58,678.37	55,955.76	54,522.37	22,461.56	22,461.56	1,144.31	1.95
Stock Opt	9,185.65	9,170.66	8,991.73	8,109.92	1,431.71	1,431.71	15.00	0.16
Total	127,851.99	126,677.29	122,267.79	115,332.86	67,138.01	67,138.01	1,174.70	1.23

**Stocks With Positive Bias**

Scrip	Price % Chg	OI % Chg	Vol % Chg	DelVol % Chg
INDIANB	13.97	11.76	598.70	1,047.66
GTOFFSHORE	7.80	15.05	707.81	624.64
JAINIRRIG	7.54	13.59	376.25	442.05
STER	5.97	5.27	245.01	36.25

**Stocks With Negative Bias**

Scrip	Price % Chg	OI % Chg	Vol % Chg	DelVol % Chg
SUNPHARMA	-4.81	42.48	175.13	132.57
MCLEODRUSS	-3.06	7.19	171.97	119.97
BALRAMCHIN	-3.06	5.93	237.52	55.09
DLF	-2.81	4.94	43.40	42.09

**Highest C-O-C**

Scrip	Cash	Futures	C-O-C%
SCI	160.30	161.65	9.92
TTML	23.75	23.95	9.92
PIRHEALTH	517.95	522.30	9.89
CHAMBLFERT	65.45	65.95	8.99

**Lowest C-O-C**

Scrip	Cash	Futures	C-O-C%
IOB	102.15	99.20	-34.00
SESAGOA	440.50	431.90	-22.99
NATIONALUM	415.55	408.65	-19.55
INDIANB	219.80	216.30	-18.75

**Most Active Nifty Options (Contracts)**
**Call Options**

Strike	Vol	OI	Chg In OI
5,400	220,064	145,051	7,313
5,300	285,869	131,888	2,385
5,500	64,672	92,129	2,588

**Put Options**

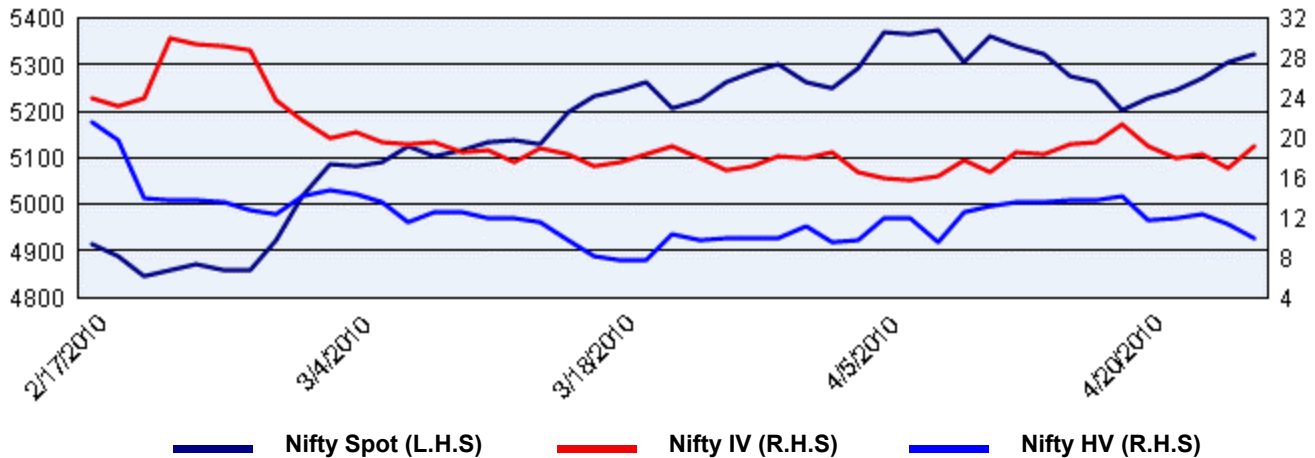
Strike	Vol	OI	Chg In OI
5,200	165,623	199,710	1,119
5,300	260,308	152,248	8,555
5,000	34,549	144,448	-6,315

**Most Active Stock Options (Contracts)**
**Call Options**

Scrip	Strike	Vol	OI	Chg In OI
SUZLON	80	326	3,586	-85
IFCI	55	106	2,194	-69
ISPATIND	23	12	1,144	-10

**Put Options**

Scrip	Strike	Vol	OI	Chg In OI
UNITECH	80	449	1,623	-109
SUZLON	75	46	906	-16
HINDALCO	180	837	777	269

**Nifty Spot with IV and HV**

**Most Active Near Month Futures**

Scrip	OI	Chg In OI(%)
SUZLON	20,683	-11.72
UNITECH	11,435	-9.19
IFCI	8,150	-13.17
RENUKA	7,905	-10.74
ISPATIND	4,782	-12.99

**Above Average Deliveries**

Scrip	Price	% Chg	%Del	5DMA
GTL	404.50	-0.37	97.36	95.44
DABUR	177.55	0.14	92.00	71.85
COLPAL	754.80	0.46	83.76	64.37
BEL	1,893.85	0.17	77.71	62.68
HINDUNILVR	241.50	1.00	73.59	69.93

**Derivatives Research:** Subash Gangadharan

**Email:** subash.gangadharan@hdfcsec

**Primer of terms used:** Open Interest (OI) - The total number of futures and/or options contracts that are open, undelivered or unsettled on a particular day. Basis - The difference between the futures price and the spot price of the underlying expressed in terms of basis points i.e. bps. Put Call Ratio (PCR) - The ratio of the trading volume or OI of put options to call options. A high volume of puts compared to calls indicates a bearish sentiment in the market and vice-versa. Cost of Carry (CoC) - It explains the relationship between the futures price and the spot price. It can be defined as interest + storage cost - income earned. It is calculated as an annualised percentage. Implied Volatility (IV) - Implied volatility (IV) measures the market's expected best guess of future volatility of the underlying. It is calculated using the market price of an option, along with other inputs used in price models, and then solving for volatility. Historical Volatility (HV) - The realized volatility of the underlying over a given time period. It can be calculated simply by taking the past prices and price changes (from close to close), then taking an average of those price changes in percentage terms over a period of time, and subtracting the daily percentage price changes from this average change to derive deviations from the daily average change for a period. Moving Average - The average price of a security over a specified time period (the most common being 5, 13, 34, 89 and 200 days), used in order to spot pricing trends by flattening out large fluctuations."

HDFC Securities Limited, I Think Techno Campus, Building - B, "Alpha", Office Floor 8, Near Kanjurmarg Station, Opp. Crompton Greaves, Kanjurmarg (East), Mumbai -400 042 Fax: (022) 30753435

Disclaimer: This document has been prepared by HDFC Securities Limited and is meant for sole use by the recipient and not for circulation. This document is not to be reported or copied or made available to others. It should not be considered to be taken as an offer to sell or a solicitation to buy any security. The information contained herein is from sources believed reliable. We do not represent that it is accurate or complete and it should not be relied upon as such. We may from time to time positions or options on, and buy and sell securities referred to herein. We may from time to time solicit from, or perform investment banking, or other services for, any company mentioned in this document. This report is intended for Retail Clients only and not for any other category of clients, including, but not limited to, Institutional Clients.