

DAILY | FUNDAMENTAL



OUR REPORTS

Fundamental

- Company Report
- Sector Report
- Theme Based Report

Daily & Weekly

- Fundamental Market Update
- Technical Market Update
- Derivative Market Update
- Currency Report
- Debt Mutual Fund Report

Monthly

- India Strategy Report
- IIP Report
- Auto Sector Update
- Cement Sector Update
- Metal Sector Update
- Telecom Sector Update
- Insurance and Mutual Fund Report
- Inflation Report
- Exports-Imports Report

Quarterly

- India and Global Strategy Report
- India Economy Report
- Company Result Expectation
- Company Result Analysis

Others

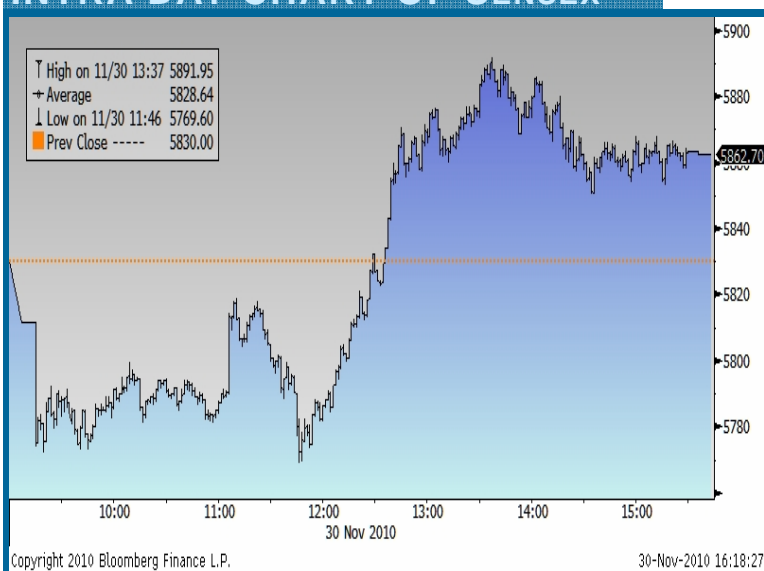
- Event Based Report
- RBI Monetary Review Report
- Annual Budget Expectation Report
- Annual Budget Review Report

December 01, 2010

Sutapa Roy

E-mail: s-roy@microsec.in

INTRA DAY CHART OF SENSEX



Indian stock market edged lower in early trade following the weak Asian markets and continued to trade lower in the first half. However, it reversed initial losses as robust GDP growth data for Q2 of FY2010-11 boosted the sentiments. Market ended in green for the second day in a row.

Indian's GDP grew at the rate of 8.9 percent in Q2 of FY2010-11 over the same quarter of previous year, matching the revised pace of growth in Q1 of FY2010-11.

Nifty closed at 5,862.70, up by 32.70 points or 0.56 percent over the previous day closing of 5,830.00, after witnessing a low of 5,768.35 and a high of 5,892.25. Sensex closed at 19,521.25, up by 116.15 points or 0.60 percent over the previous day closing of 19,405.10. It touched an intraday low of 19,218.02 and high of 19,610.46.

MARKET TURNOVER (Rs.Cr)

NAME	LAST	PREVIOUS DAY
NSE CASH	20249.95	14562.66
NSE F&O	114969.92	82180.24
BSE TOTAL	4680.27	4033.48

The markets' breadth was negative. Out of 2,014 stocks traded, 804 stocks advanced, 1,153 stocks declined and 57 stocks remained unchanged. In Sensex, 4 stocks advanced and 26 stocks declined.

NIFTY TOP TURNOVERS

COMPANY	LAST PRICE	SHARE TRADED	TOTAL TURNOVER (Rs. Cr)
LICHSGFIN	1001.00	10036821	988.24
SBIN	2994.80	3177497	935.24
RELIANCE	986.40	6968054	690.73
ICICIBANK	1148.80	5860932	669.64
INDUSINDBK	286.00	18302097	536.07

Among the sectors, BSE Realty, BSE Consumer Durables and BSE Power were the main gainers of the day, which increased by 5.67 percent, 2.08 percent and 1.84 percent respectively.

In BSE Realty sectors, Orbit Corp, Indiabulls Real Estate and DLF increased by 13.91 percent, 8.43 percent and 7.00 percent respectively. In BSE Consumer Durables sector, Rajesh Exports, Blue Star and Videocon Industries increased by 8.90 percent, 5.94 percent and 1.95 percent respectively. In BSE Power sector, JSW Energy, Siemens and Adani Power increased by 3.52 percent, 3.45 percent and 3.30 percent respectively.

NIFTY TOP GAINERS

COMPANY	LAST PRICE	CHANGE	% CHANGE
DLF	306.85	20.45	7.14
BHARTIARTL	355.80	17.10	5.05
TATAMOTORS	1242.00	56.00	4.72
SIEMENS	775.35	30.30	4.07
SBIN	2994.80	115.05	4.00

OUTLOOK

The jitteriness in the Indian market may continue but every dip should be used to built on portfolio across sectors. Volatilities in global markets have started to gain with North-South Korea tensions. However, the robust GDP number is likely to boost sentiments. Buy on dips in Exide, Pidilite, Castrol, Bharat Forge, Bhel.

NIFTY TOP LOSERS

COMPANY	LAST PRICE	CHANGE	% CHANGE
ACC	982.05	-15.55	(1.56)
SESAGOA	306.70	-4.85	(1.56)
SAIL	176.20	-2.55	(1.43)
GAIL	488.00	-6.65	(1.34)
HDFC	686.00	-8.85	(1.27)

DOMESTIC INDICES

NAME	LAST PRICE	CHANGE	% CHANGE
SENSEX	19521.25	116.15	0.60
NIFTY	5862.70	32.70	0.56
BSE MID-CAP	7764.02	106.28	1.39
BSE SMALL-CAP	9744.71	181.92	1.90
NSE CNX MIDCAP INDEX	8907.50	126.90	1.45

SECTORAL INDICES

NAME	LAST PRICE	CHANGE	% CHANGE
AUTO	10099.95	136.65	1.37
CAPITAL GOODS	15055.04	65.99	0.44
FMCG	3582.71	48.84	1.38
METAL	15626.11	69.06	0.44
OIL & GAS	10062.08	-56.30	(0.56)
HEALTHCARE	6582.86	35.70	0.55
POWER	2891.48	52.33	1.84
REALTY	2925.40	156.88	5.67
CONSUMER DURABLES	6434.44	130.99	2.08
BANK	13618.77	154.71	1.15
IT	6094.00	12.93	0.21

GLOBAL INDICES

NAME	LAST PRICE	CHANGE	% CHANGE
DOW JONES	11052.49	-39.51	(0.36)
NASDAQ	2525.22	-9.34	(0.37)
S&P 500	1187.76	-1.64	(0.14)
FTSE	5565.38	14.43	0.26
CAC	3640.38	3.42	0.09
DAX	6747.06	49.19	0.73
MEXICO BOLSA	36890.61	-13.92	(0.04)
BRAZIL BOVESPA	67908.18	-317.92	(0.47)
RUSSIAN RTS	1592.11	2.83	0.18
NIKKEI 225	9937.04	-188.95	(1.87)
HANG SENG	23007.99	-158.23	(0.68)
TAIWAN TAIEX	8372.48	5.31	0.06
SHANGHAI	2820.18	-46.18	(1.61)
KOSPI	1904.63	9.09	0.48
FTSE BURSA MALAYSIA KLCI	1485.23	-10.72	(0.72)
JAKARTA COMPOSITE	3531.21	-99.43	(2.74)
PSEi - PHILIPPINE SE	3953.70	-99.88	(2.46)
STOCK EXCH OF THAI	1005.12	-3.88	(0.38)

INDUSTRIAL METALS & ENERGY MARKETS

NAME	LAST PRICE	CHANGE	% CHANGE
COPPER (USD/T)	8288.00	68.00	0.83
ALUMINUM (USD/T)	2278.00	8.00	0.35
ZINC (USD/T)	2117.50	39.50	1.90
LEAD (USD/T)	2224.00	36.00	1.65
OIL (USD/BBL)	85.45	-0.28	(0.33)
NATURAL GAS (USD/MMBTU)	4.22	0.00	0.17

PRECIOUS METALS

NAME	LAST PRICE	CHANGE	% CHANGE
GOLD (USD/OZ)	1374.36	8.04	0.59
SILVER (USD/OZ)	27.25	0.10	0.36

INDUSTRY INDICES

NAME	LAST PRICE	CHANGE	% CHANGE
BALTIC DRY INDEX	2145.00	-25.00	(1.15)
BBG WORLD IRON/STEEL IDX	279.51	-2.39	(0.85)

CURRENCIES

NAME	LAST PRICE	CHANGE	% CHANGE
USD-INR	45.97	0.03	0.07
EUR-INR	59.90	-0.57	(0.95)
GBP-INR	71.38	-0.08	(0.11)
INR-JPY	1.82	-0.01	(0.60)

INSTITUTIONAL FLOW IN Cr (29/11/2010)

INSTRUMENT	PURCHASE	SALE	NET
FII	3374.20	3102.10	272.20
DII	1473.24	1273.91	199.33
MUTUAL FUND (26/11)	1391.90	1157.20	234.70

FII DERIVATIVE SEGMENT IN Cr (29/11/2010)

INSTRUMENT	PURCHASE	SALE	NET
INDEX FUTURE	2115.21	1417.64	697.58
INDEX OPTION	5941.05	5273.24	667.81
STOCK FUTURE	1835.29	1309.21	526.07
STOCK OPTION	309.53	377.77	(68.25)

BULK & BLOCK DEALS

http://www.bseindia.com/mktlive/market_summ/bulk_deals.asp

http://www.bseindia.com/mktlive/market_summ/block_deals.asp

- ◆ Rolta India signed a partnership agreement with Augusta Systems Inc, a provider of technologies that power the intelligent convergence of devices, systems and networks. Through this partnership, Rolta will be able to incorporate Augusta Edge Frontier middleware for use in security, defence and other geospatial applications where sensor integration and fusion are essential in providing situation awareness.
- ◆ HCL Technologies signed a multi year end-to-end IT Infrastructure Management engagement with pharmaceutical company Purdue Pharma LP. The scope of this engagement covers management of two data centers and all remote locations of the client in the U.S. HCL Technologies will also be responsible for transforming Purdue's IT environment by implementing its world class processes as per ITIL V3 and MTaaS platform, which is HCL's award winning business-ready hosted platform for enterprise tools. HCL will also be implementing its shared Remedy V6 ITSM ticketing platform that is based on the MTaaS reference architecture.
- ◆ Videocon Industries announced that the WA-388-P joint venture has entered into a farm in agreement with Apache Northwest Pty Ltd. The WA-388-P permit is located north of the Pluto, Wheatstone, Gorgon and North West Shelf fields, offshore Western Australia. It contains a portfolio of play types and seven prospects have been identified ranging in potential size from 0.3 to .8 trillion cubic feet of prospective gas resource.
- ◆ Sun Pharmaceutical Industries announced that USFDA granted a tentative approval for an Abbreviated New Drug Application (ANDA) to market a generic version of Aricept, donepezil hydrochloride tablets. These generic donepezil hydrochloride tablets, equivalent to Eisai's Aricept tablets, include two strengths: 5 mg and 10 mg. Donepezil hydrochloride tablets are indicated in the treatment of dementia of the Alzheimer's type.
- ◆ Ranbaxy Laboratories Ltd has launched Donepezil 5 MG and 10 MG tablets to U.S. Healthcare System.
- ◆ REpower Systems AG, in which Suzlon Energy is a majority shareholder with over 90% holding, signed two contracts with UK based wind energy company, Energiekontor UK Construction Ltd. REpower UK will be supplying nine of REpower's MM82 turbines to Energiekontor UK's wind farm at Withernwick in Yorkshire and twelve to Hyndburn wind farm on Oswaldtwistle Moor in Lancashire. The turbines at these sites have a rated capacity of 2.05 MW per turbine.
- ◆ According to news reports, Dewan Housing Finance Corporation emerged as the frontrunner to acquire Deutsche Postbank Home Finance in a deal estimated at USD240 million, or roughly INR1,100 crore. The deal-making is in the final stages and it could be clinched within this week. Deutsche Postbank AG had mandated Standard Chartered Bank to sell its Indian arm, as it looks to stay focused on the home finance market in mainland Europe. If the deal goes through, it would be Dewan Housings second buyout after its 2004 purchase of Vysya Bank Housing Finance, boosting its loan book and pan-India presence.
- ◆ Zenith Birla (India) is setting up a manufacturing unit for manufacturing of large diameter spiral SAW pipes. The company is importing a mobile spiral mill from Australia capable of producing pipes with the diameter of about 18 inches to 100 inches. This is the first mobile spiral mill that can move from one location to other location and manufacture pipes at site; thus reducing transportation cost and wastage of materials.
- ◆ Air India, whose management has been considering slashing salaries and allowances of its employees, signed an MoU with its officers' association to pay interim relief which would put an annual burden of INR36 crore.

CORPORATE ACTION BONUS / RIGHTS / STOCK SPLIT / ADR & GDR / FCCB / M&A / WARRANTS ETC.			
COMPANY	RECORD DATE	Ex-DATE	DETAILS
Farmax India Limited	-	03/12/2010	Annual General Meeting
Hi-Tech Gears Limited	02/12/2010	01/12/2010	Bonus 1:1

OTHER EVENT

- ♦ India's Exports-Imports data for October 2010.
- ♦ India, China, Germany PMI Manufacturing data for November 2010.
- ♦ Bloomberg FCI monthly data for November 2010.
- ♦ The U.S. New Home Sales data for October 2010.
- ♦ The U.S. MBA Mortgage Application data for the week ended November 26, 2010.

Disclaimer

The investments discussed or recommended in this report may not be suitable for all investors. Investors should use this research as one input into formulating an investment opinion. Additional inputs should include, but are not limited to, the review of other. This is not an offer (or solicitation of an offer) to buy/sell the securities/instruments mentioned or an official confirmation. Microsec Capital Limited is not responsible for any error or inaccuracy or for any losses suffered on account of information contained in this report. This report does not purport to be offer for purchase and sale of share/ units. We and our affiliates, officers, directors, and employees, including persons involved in the preparation or issuance of this material may: (a) from time to time, have long or short positions in, and buy or sell the securities thereof, of company (ies) mentioned herein or (b) be engaged in any other transaction involving such securities and earn brokerage or other compensation discussed herein or act as advisor or lender I borrower to such company (ies) or have other potential conflict of interest with respect to any recommendation and related information and opinions. The same persons may have acted upon the information contained here. No part of this material may be duplicated in any form and/or redistributed without Microsec Capital Limited' prior written consent.