



Punter's Call

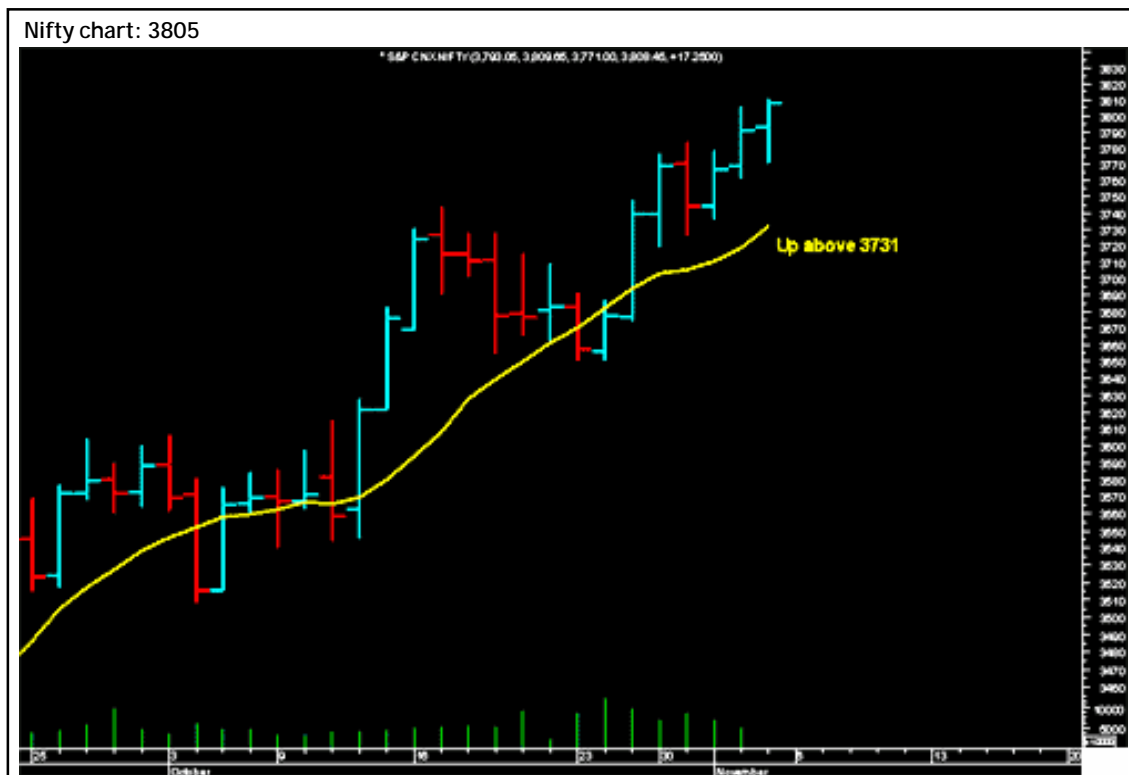
A close above 3800

The Nifty was range-bound for a major portion of the trading session and ended the day above the 3800 mark. In the short term the Index should move up towards its short-term target of 3860 at the upper end of channel. Intra-day the Nifty is likely to consolidate and trade sideways with support in the 3770-3750 range. On any intra-day dip the index should find support in the 3770-3750 range. As long as the Nifty is above the 10-DMA at 3730, the bias is up.

ONGC could test Rs900 and it has a support at Rs850. ACC has a support at Rs985 and it faces a resistance Rs1,020. India Cements could test Rs230 and it has a support at Rs218.

Market Breadth

	BSE	NSE
Advances	1,116	516
Declines	1,408	801
Unchanged	78	33



Short Term Trend

	Target	Trend	Reversal	Support/Resistance
Short term (Nifty)	3860	↑	Down below 3730	3780/ 3830

Icon guide

↑ Up	↓ Down	↘ Downswing matures	↗ Upswing matures
------	--------	---------------------	-------------------

Medium Term Trend

	Target	Trend	Reversal	Support/Resistance
Medium term (Nifty)	3900	↑	Down below 3650	3650 / 3850

Icon guide

↑ Up	↓ Down	↘ Downswing matures	↗ Upswing matures
------	--------	---------------------	-------------------

Smart Charts



Jet Airways—Buy

CMP: Rs617.0

Buy Jet Airways at the current market price of Rs617 with a stop loss of Rs577.4 for targets of Rs680 and Rs700.

Smart Charts > Open Long Calls

Date	Recommendation	Stop Loss/ Reversal (Intra-day)	Stop Loss/ Reversal (Closing)	Buy Price	Closing Price	Potential % P/L at CMP	Targets
03-11-06	Jet Airways	-	577.4	617.0	625.1	1%	680-700
30-10-06	GAIL	-	244.4	255.0	250.0	-2%	285-290
30-10-06	SRF	-	225.7	256.0	252.5	-1%	305-315
27-10-06	HLL	-	214.7	226.0	235.5	4%	245-250
27-10-06	VSNL	-	394.4	428.5	442.4	3%	490-500
27-10-06	Maruti Udyog	-	917.7	957.0	974.3	2%	1000-1020
27-10-06	Chennai Petro	-	Book Profit	174.0	203.0	17%	215-220
26-10-06	BOC India	-	Stopped Out	190.0	178.4	-6%	210-212
20-10-06	ITI	Stopped Out	-	59.2	54.0	-9%	65-66
18-10-06	Reliance Natural Resources	-	19.8	23.0	25.1	9%	28-29
11-10-06	Tisco	-	483.4	510.5	492.7	-3%	564
11-10-06	Gitanjali Gems	-	183.4	209.6	208.0	-1%	265-270
09-10-06	TV Today	-	69.4	77.0	71.7	-7%	90-92
09-10-06	Fedders Lloyd	-	106.7	128.0	112.5	-12%	165-170
09-10-06	Clutch Auto	-	114.4	127.5	137.8	8%	150-155
09-10-06	D-Link	-	89.7	97.8	90.0	-8%	112
09-10-06	CEAT	-	115.4	133.0	118.8	-11%	170
09-10-06	Tube Investment	-	78.0	88.0	82.8	-6%	110
09-10-06	Dewan Housing Finance	-	68.4	75.8	74.6	-2%	90-93
05-10-06	Hero Honda	-	694.0	757.0	761.0	1%	860-880
03-10-06	Mahindra & Mahindra	-	754.4	692.0	767.5	11%	749-809
28-09-06	Gateway Distriparks	-	148.4	164.0	173.6	6%	180-195
25-09-06	Satyam	-	396.4	417.0	426.0	2%	460-490
19-09-06	Exide Industries	38.0	-	41.8	41.1	-2%	46-50
18-09-06	Finolex Industries	-	84.4	99.4	97.2	-2%	129-135
14-09-06	SREI International	-	47.0	53.0	47.9	-10%	65
14-09-06	Mercator Lines	-	39.4	43.0	39.8	-8%	50-52

Momentum Calls > Open Long Calls

For the short term—1 to 5 days

Stock	Product type	Action date	Stop loss	Closing Price	Target 1	Target 2
Gayatri Project	Cash / Future	03-11-06	319.4	329.9	340	350
OBC	Cash / Future	02-11-06	249.4	253.2	265	272
Tata Power	Cash / Future	30-10-06	519.7	553.8	552	568
Rolta	Cash / Future	30-10-06	213.4	220.9	229	237

NOTE: Kindly note that all stop losses in Momentum Calls are on an intra-day basis.

Trendy Levels

Sensex		Nifty	
Support	Resistance	Support	Resistance
13020	13258	3780	3815
12910	13330	3750	3835
12800	13400	3727	3860
20DSMA	40DEMA	20DSMA	40DEMA
12753	12450	3685	3605
BSE Sensex: 13131		Nifty: 3805	

Day Trader's HIT List

For November 06, 2006

Scrip Name	Support Levels		Close (Rs)	Resistance Levels		Action
	S1	S2		R2	R1	
NIFTY Futures	3780	3800	3821	3850	3875	Buy with a stop below S2.
ACC	990	1000	1007	1020	1030	Buy with a stop below S2.
Century	535	550	557	570	575	Buy with a stop below S2.
Hindalco	182	186	187	192	200	Buy with a stop below S2.
Infosys	2030	2060	2075	2082	2100	Go long above R2. Go short below S2.
M & M	750	762	767	771	785	Go long above R2. Go short below S2.
Maruti	960	970	974	984	995	Buy with a stop below S2.
MTNL	132	134	138	140	142	Go short with a stop above R2.
ONGC	850	870	878	895	900	Buy with a stop below S2.
Reliance	1260	1280	1287	1300	1310	Buy with a stop below S2.
Reliance Capital	580	590	595	610	620	Buy with a stop below S2.
Satyam	410	424	426	430	441	Go long above R2. Go short below S2.
SBI	1100	1120	1126	1135	1145	Buy with a stop below S2.
TCS	1040	1060	1067	1072	1110	Go long above R2. Go short below S2.
Tata Steel	475	485	493	496	498	Go short with a stop above R2.
Tata Motors	790	805	815	820	830	Go short with a stop above R2.
Ranbaxy	392	398	403	410	415	Buy above R2.
VSNL	420	435	442	455	465	Buy with a stop below S2.
Titan	745	760	767	785	795	Buy with a stop below S2.
Wipro	520	525	530	535	550	Buy above R2.
Rcom	378	388	391	400	405	Buy with a stop below S2.

*Note: Closing price of Nifty futures is last traded price of Nifty futures on NSE

For Private Circulation only

[Home](#)

Disclaimer

*This document has been prepared by Sharekhan Ltd. (SHAREKHAN). This Document is subject to changes without prior notice and is intended only for the person or entity to which it is addressed to and may contain confidential and/or privileged material and is not for any type of circulation. Any review, retransmission, or any other use is prohibited. Kindly note that this document does not constitute an offer or solicitation for the purchase or sale of any financial instrument or as an official confirmation of any transaction.

Though disseminated to all the customers simultaneously, not all customers may receive this report at the same time. SHAREKHAN will not treat recipients as customers by virtue of their receiving this report.

The information contained herein is from publicly available data or other sources believed to be reliable. While we would endeavour to update the information herein on reasonable basis, SHAREKHAN, its subsidiaries and associated companies, their directors and employees ("SHAREKHAN and affiliates") are under no obligation to update or keep the information current. Also, there may be regulatory, compliance, or other reasons that may prevent SHAREKHAN and affiliates from doing so. We do not represent that information contained herein is accurate or complete and it should not be relied upon as such. This document is prepared for assistance only and is not intended to be and must not be taken as the basis for an investment decision. The user assumes the entire risk of any use made of this information. Each recipient of this document should make such investigations as it deems necessary to arrive at an independent evaluation of an investment in the securities of companies referred to in this document (including the merits and risks involved), and should consult its own advisors to determine the merits and risks of such an investment. The investment discussed or views expressed may not be suitable for all investors. We do not undertake to advise you as to any change of our views. Affiliates of Sharekhan may have issued other reports that are inconsistent with and reach different conclusion from the information presented in this report.

This report is not directed or intended for distribution to, or use by, any person or entity who is a citizen or resident of or located in any locality, state, country or other jurisdiction, where such distribution, publication, availability or use would be contrary to law, regulation or which would subject SHAREKHAN and affiliates to any registration or licensing requirement within such jurisdiction. The securities described herein may or may not be eligible for sale in all jurisdictions or to certain category of investors. Persons in whose possession this document may come are required to inform themselves of and to observe such restriction.

SHAREKHAN & affiliates may have used the information set forth herein before publication and may have positions in, may from time to time purchase or sell or may be materially interested in any of the securities mentioned or related securities. SHAREKHAN may from time to time solicit from, or perform investment banking, or other services for, any company mentioned herein. Without limiting any of the foregoing, in no event shall SHAREKHAN, any of its affiliates or any third party involved in, or related to, computing or compiling the information have any liability for any damages of any kind. Any comments or statements made herein are those of the analyst and do not necessarily reflect those of SHAREKHAN.*