

### Indices Snapshot

#### Sensex

Symbol	Current Value	Previous Close	% Change
SENSEX	17617.6	18075.66	-2.53
AUTO	4758.64	4866.49	-2.22
BANKEKX	10609.81	10963.76	-3.23
CG	15932.87	16392.27	-2.8
FMCG	2223.62	2269.29	-2.01
IT	3857.83	3849.77	0.21
METAL	15833.53	16209.95	-2.32
OIL & GAS	10884	11130.88	-2.22
PSU	8299.7	8535.79	-2.77
REALTY	9709.24	10070.74	-3.59
TECK	3305.88	3339.65	-1.01

#### Nifty

Symbol	Current	Previous	% Change
NIFTY	5154.45	5280.8	-2.39
JUNIOR	9688.55	9975.5	-2.88
CNX IT	3943.95	3937.85	0.15
BANK NIFTY	9129.1	9423.45	-3.12

#### Global (20-02-08) (08.25 PM)

INDEX	Value	Change	% Change
DOW JONES	12275.43	-62.69	-0.50
NASDAQ	2301.56	-4.44	-0.19
NIKKEI 225	13310.37	-447.54	-3.25
HANG SENG	23590.58	-532.59	-2.21

#### Top Traded Volumes (All Market)

Symbol	Shares Traded	Last Traded Price (in Rs.)
HEXAWARE	15330549	71.95
ISPAT IND	8733493	43.15
JP ASSOSS	7282097	243.2
REL PET	6446203	162.2
GMR INFRA	5690103	172.8
SAIL	3692076	223.95
RPOWER	3483103	408.2
CHAMBL	2493311	60.05
NTPC	2361968	197.85

### Commentary

Markets opened lower on the back of weak global cues traded very weak during the day without showing any sign of recovery and ended the day's trade in red. In the American front, DOWJONES had ended in red at 12337.22 (-0.09%) while NASDAQ ended down 15 points and was at 2306.2. With the entire negative trend, the Indian market started off with Sensex at 17991 losing 85 points and Nifty down 33 points at 5247. Selling pressure was felt in Banking, oil, power, realty and telecom sectors while member of the tech family were the initial gainers. The initial losers were ICICI Bank, SAIL, RCOM, BHEL and L&T. Journey of the Indian market continued towards southwards with all major sectors contributing to the direction except Technology sector because of the weakening of rupee and the index was up over 1%. The market fell like a star from heaven until it entered the noon session. In the afternoon trade the market was trading flat and was hovering around 5150 mark. The market paved a brick foundation at this level making 5150 a support level. The European market which began in the afternoon was also trading in the negative region. The market made an attempt to pull up from the low but failed to keep the northward move. Towards the end of the day the market lost its ground and came down breaching the 5150 level and closed the day's trade with Sensex at 17616 losing 458 points while Nifty down 126 points and was at 5154. Among the losers were Tata Motors, BHEL, TISCO, NALCO and Sunpharma and those forming the gainers group were the tech masters like Satyam, TCS, Infosys, Tata power and Sterlite Industries. The midcap and the smallcap stocks were dominated by the bears. The NSE cash turnover was at Rs 12714.37 crore and the BSE cash turnover was at Rs 6158.38 crore making the total market wide turnover to be at Rs 55269.78 crore.

## Top Gainers (NSE)

SYMBOL	LAST PRICE	PREVIO US CLOSE	% Change
OCL	273.3	227.75	20
GUJNRECOK	155.65	136.8	13.78
GBN	1112.7	992.15	12.15
HERCULES	2994.3	2717.85	10.17
FTCSF3YGRO	11.7	10.65	9.86
GSFC	269.4	247.1	9.02

## Top Losers (NSE)

SYMBOL	LAST PRICE	PREVIOUS CLOSE	% Change
BANG	174.1	207	-15.89
FTCPOF5YD	9	10	-10
FTCPOF3YG	17.8	19.75	-9.87
SARLAPOLY	147.25	163	-9.66
LILT	430.4	470.75	-8.57

## New Highs & New Lows (BSE)

NEW HIGHS		NEW LOWS	
SCRIP	PRICE	SCRIP	PRICE
PARAN LTD	885.55	ASIAN FIL	0.52
MAC CHAR	446.15	GVK POW	52.95
RANJEEV	17.78	SHIVAM	60.15
JUMBO	43.1	KNR CON	142.15
SAGAR	31.05	SHRIRAM	281.05
REI AGRO	1360	BANG	166.5
COMPU LE	25.15		
SHRIRAM	374.7		
BANG	260		

## FOREX MARKET (20-02-08) (8.25 PM)

	Value	Change	%Change
Rs vs \$	40.13	0.3	0.75

## ECONOMIC INDICATORS

GDP Rate	8.9%
Inflation Rate (for the week ended Feb 02)	4.07%
Call Money Rate	7.75%/8.00%

INDEX	R1	R2	S1	S2
NIFTY	5242	5330	5091	5028
SENSEX	17904	18190	17418	17219

## Corporate Speaks

- **Royal Orchid Hotels** said that Parsvnath Hotels, a wholly-owned subsidiary of Delhi based real estate developers Parsvnath Developers has formed a joint venture with the company. The joint venture will develop ten hotels at an investment of Rs 5 billion.
- **Accentia Technologies Ltd** has informed that the Company has entered into a strategic partnership with 5 leading hospitals in USA through M/s. OAK Technologies Inc, USA for their end to end "Health Care Receivables Cycle Management.
- Gurgaon-based **Yatra.com**, one of the leading online travel companies in India, has plans to open 100 luxury lounges throughout the country with an investment of around Rs 180 - 200 million by 2008.
- Private sector lender **IndusInd Bank** has decided to sell up to 10% of its existing equity capital.
- Textile major **Bombay Dyeing** on Tuesday said that it plans to invest Rs 60 crore over the next 2-3 years to open 100 company-managed stores, besides a foray into the UAE.
- **Petronet LNG** is looking at buying liquefied natural gas (LNG) from a proposed 6.3 million tonnes a year project in Papua New Guinea. The project is 34 percent owned by Exxon Mobil and 30 percent owned by Australia-listed Oil Search Ltd.

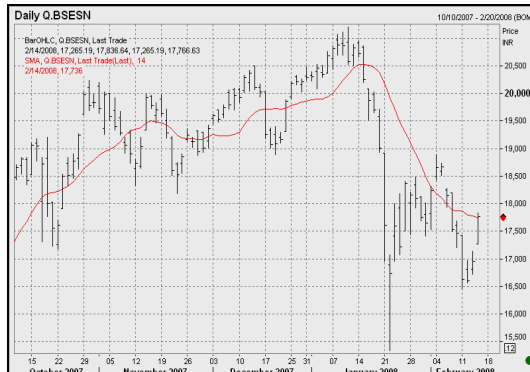
## Advances / Declines (All Market)

ADVANCES	DECLINES	MARKET BREADTH
806	1932	NEGATIVE

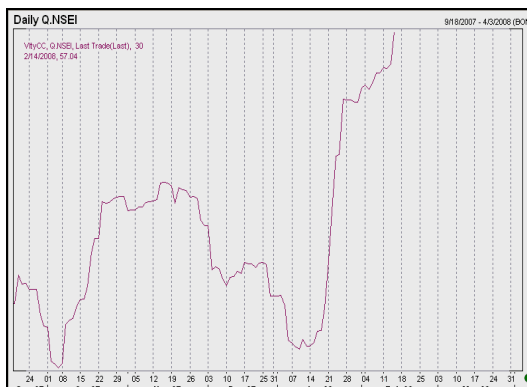
## FII Daily Activity (as on 20-02-08)

	PURCHASES (Rs.in crores)	SALES (Rs.in crores)	NET INVESTMENT (Rs in crores)
EQUITY	2876.67	3143.11	-266.44

## SENSEX



## NIFTY - MONTHLY VOLATILITY



## LIGHT CRUDE

CLOSE	CHANGE	% CHANGE
98.99	-1.02	-1.02

## Corporate Speaks

- South Korean builder **POSCO Engineering & Construction Co** said on Wednesday it had won a \$400 million order to build a blast furnace for the Steel Authority of India Ltd.
- Utility vehicle major **Mahindra & Mahindra (M&M)** is targeting revenues worth \$3 billion over the next 10 years from deals in the defence space through supply of land equipment systems to the armed forces.
- Engineering giant **Larsen and Toubro** on Tuesday signed a contract worth \$431 million as part of an upgrade of two of Kuwait's three refineries for environment-friendly products.
- Multiplex operator **Pyramid Saimira Theatre Ltd** said on Wednesday it planned to invest up to Rs 300 crore in its group firms. This stake acquisition would result in better consolidation of distribution and production and improve valuation and financial leveraging capacity of the Pyramid Saimira group.
- **Tata Consultancy Services Ltd** has announced that it has signed a multi-year contract with Chrysler LLC to provide a comprehensive portfolio of IT services.
- **Welspun-Gujarat Stahl Rohren Ltd** has announced that the Company has bagged prestigious pipeline orders worth Rs 120 Crores for the supply of ERW line pipes in Southern Europe.

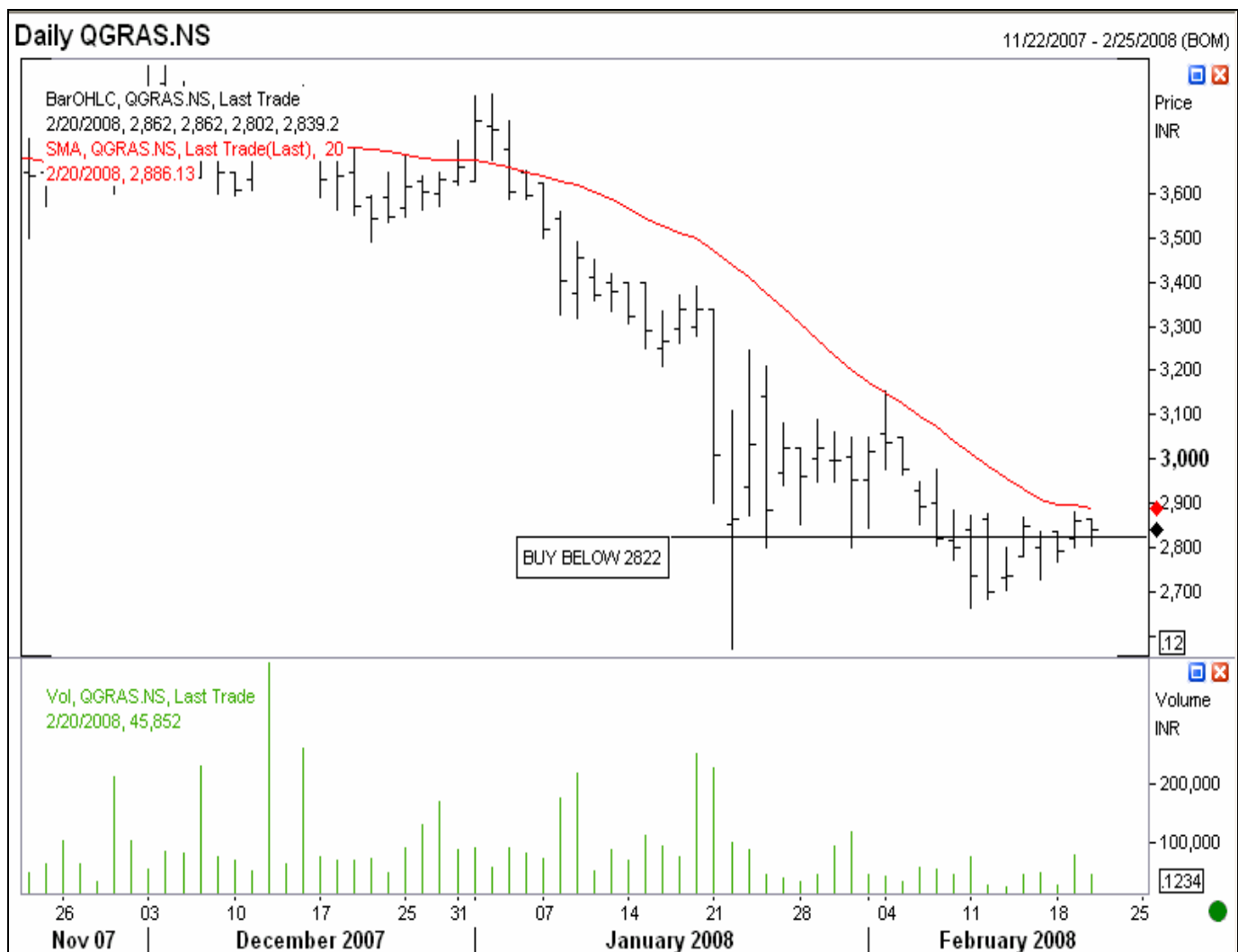
## BULK DEALS AT NSE

Date	Symbol	Security Name	Client Name	Buy/Sell	Quantity Traded	Trade Price / Wght. Avg. Price
20-Feb-08	BANG	Bang Overseas Limited	ADITI FINLEASE PVT. LTD.	BUY	76696	194.79
20-Feb-08	BANG	Bang Overseas Limited	AMBIT SECURITIES BROKING PVT. LTD.	BUY	150309	197.71
20-Feb-08	BANG	Bang Overseas Limited	ASHOK KUMAR	BUY	130262	196.05
20-Feb-08	BANG	Bang Overseas Limited	ASHWIN STOCKS AND INVESTMENT PRIVATE LIMITED	BUY	156055	200.05
20-Feb-08	BANG	Bang Overseas Limited	ASTUTE COMMODITIES & DERIVATIVES Pvt Ltd	BUY	84700	197.89
20-Feb-08	BANG	Bang Overseas Limited	BEEJAY INVESTMENT FINANCIAL	BUY	285792	195.08
20-Feb-08	BANG	Bang Overseas Limited	CHETAN MISTRY	BUY	143778	192.93
20-Feb-08	BANG	Bang Overseas Limited	CONSOLIDATED SECURITIES LTD	BUY	176782	191.95
20-Feb-08	BANG	Bang Overseas Limited	CPR CAPITAL SERVICES LTD.	BUY	317425	196.73
20-Feb-08	BANG	Bang Overseas Limited	CREDENTIAL STOCK BROKERS LIMITED	BUY	82057	198.99
20-Feb-08	BANG	Bang Overseas Limited	DINDAYAL BIYANI STOCK BROKERS LTD.	BUY	91170	199.41
20-Feb-08	BANG	Bang Overseas Limited	DINESH MUNJAL	BUY	214576	192.86
20-Feb-08	BANG	Bang Overseas Limited	EVERSIGHT TRADECOMM PVT LTD	BUY	99655	195.99
20-Feb-08	BANG	Bang Overseas Limited	G RAMAKRISHNA	BUY	85722	203.52
20-Feb-08	BANG	Bang Overseas Limited	G.S.V. COMMODITIES PRAVITE LIMITED	BUY	88122	189.14
20-Feb-08	BANG	Bang Overseas Limited	HARBUX SINGH SIDHU	BUY	437180	190.27
20-Feb-08	BANG	Bang Overseas Limited	INDRA KUMAR BAGRI	BUY	98069	200.85
20-Feb-08	BANG	Bang Overseas Limited	JAY SURESH CHHEDA	BUY	75309	198.83
20-Feb-08	BANG	Bang Overseas Limited	KAKANI OMPRAKASH	BUY	79347	181.9
20-Feb-08	BANG	Bang Overseas Limited	KAUSHIK SHAH SHARES & SECURITIES PVT LTD	BUY	95411	200.55

## FROM THE EDITOR'S DESK

Outlook for the market remains weak. For Nifty 5015 is a key support level which is the 200 day moving average and if Nifty closes below this level for two consecutive trading session, further sell off can be expected. Protect the positions using appropriate stop losses or short Nifty futures.

### **BULLISH VIEW: GRASIM (2839.2)**



**BUY BELOW 2822**

## BEARISH VIEW: ITC (201.95)



**WEAK BELOW 195**

### RESEARCH WING

**ALEX K MATHEWS**

[alex@geojit.com](mailto:alex@geojit.com)

**ASHON MATHEW**

**TENCY N KURIEN**

GEOJIT FINANCIAL SERVICES LTD, KERALA

### Disclaimer

The information contained here was gathered from sources deemed reliable; however, no claim is made as to its accuracy or content. This does not contain specific recommendations to buy or sell at particular prices or times, nor should any of the examples presented be deemed as such. There is a risk of loss in trading stocks and stock options and you should carefully consider your financial position before making any trades. This is not, nor is it intended to be, a complete study of chart patterns or technical analysis and should not be deemed as such. GEOJIT FINANCIAL SERVICES Ltd. does not guarantee that such information is accurate or complete and it should not be relied upon as such. Any opinions expressed reflect judgments at this date and are subject to change without notice. For use at the sole discretion of investors without any liability on GEOJIT FINANCIAL SERVICES Ltd. whatsoever. Stock trading involves high risks and you can lose a significant amount of money.