



15<sup>TH</sup> JAN 2010

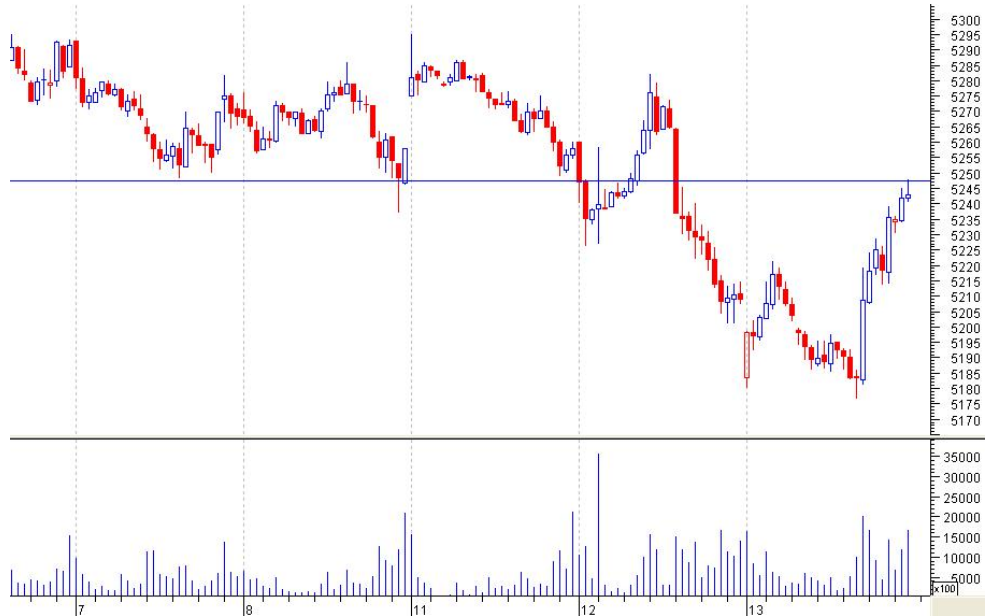
**Market Data ( 5P.M IST)**

Index	Close	Point Change	% age Change
<b>BSE Sensex</b>	17584	+75	+0.43%
<b>NSE Nifty</b>	5259	+25	+0.50%
<b>S&amp;P 500</b>	1145	00	00
<b>Dow Jones</b>	10680	+53	+0.50%
<b>NASDAQ</b>	2307	00	00
<b>FTSE</b>	5488	+15	+0.28

CONTACT PERSON:

PERVEZ DANISH

**NIFTY DAILY WATCH**



**DAILY NIFTY CHART:**

	LTP	S3	S2	S1	R1	R2	R3
<b>NIFTY</b>	5259	5135	5207	5235	5275	5310	5373
<b>SENSEX</b>	17584	17000	17190	17270	17630	17790	17940

**COMMENTARY:**

Indian market again had a volatile session in the positive side. MIDCAPS and SMALLCAPS attract maximum buying interest. . SENSEX closed at 17584, up 75 points and Nifty at 5259, up 25 points from the previous close. CNX MIDCAP index was up 1.03% and BSE SMALLCAP index was up 1.20%. Top gainers included RCOM, WIPRO, RELIANCE, ONGC, BHEL, ABB and SIEMENS. Top losers are listed as HUL, TATAPOWER, DLF, HDFC, RELINFRA, HCLTECH, SUZLON and RELCAPITAL.

**NEXT SESSION.....**

In the next session, NIFTY FUT if cross 5310 level may target 5373 with a strong support at 5235 and 5206. On the other hand BANK NIFTY appears technically weak. Hence, **market may be a tug of war between NIFTY and BANK NIFTY in the next session.** However, CAPITAL GOODS and POWER SECTOR may perform well.

**EXPECTED BULLISH STOCKS:**

TATAPOWER, SESAGOA, BHUSANSTEEL, JSWSTEEL, BHEL, SIEMENS, ABB, BALRAMCHINI, RENUKA, ROLTA, HCLTECH, WIPRO, TCS.

**EXPECTED BEARISH STOCKS:**

ICICIBANK, STER, NATIONALUM, SBIN, MARUTI, AXISBANK, M&M, TATAMOTORS, HUL, HDFCBANK.

**NIFTY AND BANK NIFTY FUTURE:**

**SELL NIFTY FUT AT GAINS WITH CLOSE STOP LOSS 5310 TGT 5244-5215-5155**

**BANK NIFTY FUT HAS A MINOR SUPPORT AT 8885 .**

**SELL BANK NIFTY FUT BELOW 8885 STOPLOSS 8925 TGT 8543-8807-8747**

**INTRADAY TRADING STRATEGY.**

SL No	TRADE BUY/SELL	SCRIP SYMBOL	ENTER	STOP LOSS	TARGET
1.	BUY	OPTOCIRCUI	ABOVE 246	BELOW 240	253-262-270
2.	BUY	STER	ABOVE 888	BELOW 877	899-904-920
1.	BUY	ABB	ABOVE 860	BELOW 545	873-888-910.

**F&O INTRADAY TRADING STRATEGY.**

SL No	TRADE BUY/SELL	SCRIP SYMBOL	ENTER	STOP LOSS	TARGET
1.	SELL	ABAN FUT	BELOW 1480	ABOVE 1492	1468-1453-1436
2.	BUY	BHEL FUT	ABOVE 2388	BELOW 2370	2405-2424-2442

**FOLLOW UPS.**

NATIONALUM SELL CALL GIVEN BELOW 857 TGT 848 MADE A LOW 851.

ENIL BUY CALL GIVEN ABOVE 240 STOPLOSS TRIGGERRED.

ABB FUT BUY CALL GIVEN ABOVE 825 GT 860 MADE A HIGH 859.

SBIN FUT BUY CALL GIVEN ABOVE 2192; OPENED NEAR 1<sup>ST</sup> TGT; CALL IGNORED.

**NOTE: \*\* FOLLOW ALL CALLS AFTER 2-3 MINUTES FROM OPENING BELL.**

**\*\*TRADERS ARE SUGGESTED TO FOLLOW STRICTLY THE STOP LOSS GIVEN IN EACH CALL.**

*The document is for information purposes only and ought to be construed as an advice on investment or any daily news letter: daily report other subject, neither be construed as an offer or solicitation for the purchase and sale. It is based on information available in the public domain and compiled from the sources believed to be reliable, though we have presentation to effect and opinions given herein based on such information ought to be taken in this background. For the information, statements and opinions given, made or expressed herein or from any omission here from, neither Fairwealth Securities Pvt. Ltd., its directors, officers, employees, subsidiaries, affiliates and accept any responsibility of whatsoever nature, nor shall they be held liable in any manner for the consequence of any action taken by you based on the information opinion contained herein. You are advised to take informed decisions in consultation with an independent advisor. Fairwealth Securities Pvt. Ltd., its directors, officers, employees, subsidiaries, affiliates and associates may have a position in any of the equities cash & futures mentioned in this report.*

**FAIRWEALTH SECURITIES**

**WWW.FAIRWEALTH.IN**