

DAILY ROUND-UP

For Private Circulation Only

MONDAY | DECEMBER 28, 2009

Phone : +91 33 2359 4612
 +91 33 2359 4614
 +91 33 2358 1953
 E-mail : research@shriraminsight.com



Shriram Market Analysis
 & Research Team

Indian Market

INDICES	Close	Previous
S&P CNX Nifty	5178.40	5144.60
SENSEX	17360.61	17231.11

Sectoral Indices

INDICES	Close	Previous
BSE IT	5175.46	5158.36
BSE BANK	9968.03	9918.27
BSE FMCG	2824.39	2805.96
BSE PSU	9459.49	9424.27
BSE METAL	17333.73	17091.37

Asian Market

INDICES	Close	Previous
Nikkei225	10494.71	10536.92
HangSeng	closed	21517.0
StraitTimes	closed	2837.7
Shanghai	3141.35	3153.41
Kospi	closed	1682.34

Exchange Turnover (Rs. in Crore)

INDICES	Current	Previous
NSE Cash	13554.58	14454.5
NSE F&O	84665.29	117607.57

Previous FII Positions

ACTIVITIES	Cash	F&O
NET BUY	706.83	
NET SELL		899.75

Top Gainers

INDICES	Close	Previous
TATAMOTORS	777.60	746.45
HINDALCO	158.00	153.40
RELIINFRA	1097.00	1069.75
TATASTEEL	615.50	604.05

Top Losers

INDICES	Close	Previous
IDEA	58.45	59.95
RANBAXY	518.70	528.85
JPASSOCIAT	144.25	147.00
BHARTIARTL	321.50	326.25

The markets opened higher on the back of positive cues from the Asian markets. The Realty and CD index were witnessing significant buying interest in the opening trade and have outperformed all the sectoral indices. Bse Midcaps and smallcaps were also outperformed. However suddenly the market lost momentum and slipped off from the early highs as profit booking emerged at higher level after a sharp rally in the previous session. Markets recovered some ground and became flat in the late morning session. In the early afternoon session markets were trading with marginal gains where CD, Realty, Auto, Metal, Oil & gas stocks were in demand. In afternoon markets were moving in a narrow choppy range. Bse Midcaps and smallcaps still in demand in this session. But in late afternoon Nifty surged to 2009 year high led by the all Bse sectoral indices. But markets were unable to maintain the momentum and fell from the top. Ultimately markets closed in the green zone with modest gains. Bse sectors like Auto, Metal, Oil & gas, CG gained maximum along with Midcaps and small caps.

Economic News

- ❖ Crude Oil traded at US\$ 78.05 per barrel and Rupee traded at Rs.46.50 against each US\$.

Corporate News

- ❖ Shriram Transport Finance Company Ltd. (**NSE : SRTRANSFIN**) has acquired the assets of GE Transportation Financial Services for Rs 1200 crore.
- ❖ GTL Infrastructure Limited (**NSE : GTLINFRA**) is buying Aircel's telecom tower business for Rs 4000 crore in an all-cash deal.
- ❖ Tantia Constructions Limited (**NSE : TANTIACONS**) has received a prestigious project from Eastern Railway, Constructions Department Kolkata in the name of TANTIA-EDCL (JV) for earthwork in filing with required compaction in Rly. embankment, approach road/ back filing of platform wall etc., blanketing, turfing, construction of Minor Bridges etc. and other misc. works from Haripal Station (excluding Haripal Yard) to Tarkeswar Station (excluding yard) in connection with double line from Seoraphuli to Tarkeswar for worth Rs. 19,50,45,328.66.
- ❖ Radico Khaitan Limited's (**NSE : RADICO**) joint venture with Diageo has received Foreign Investment Promotion Board's nod for 100% foreign direct investment.
- ❖ Diamond Cables Limited (**BSE : 522163**) have raised Rs. 300 million from TATA Capital as long term working capital loan. These funds will be used to augment company's core working capital requirements.

Global News

- ❖ **U.S. consumer sentiment up in Dec.**
U.S. consumer confidence rose in December. The consumer sentiment index rose to 72.5 in the final reading for December, up from 67.4 in November.
- ❖ **U.S. home sales figure down**
Sales of new homes fell 11.3% in November to a seasonally adjusted annual rate of 355,000 in U.S. Sales were down 9% compared with last November.
- ❖ **Ford sells Volvo unit to China's Geely**
Ford sells Volvo unit to China's Zhejiang Geely Holding Group for \$2 bn and the automakers aim to complete the transaction in the second quarter.
- ❖ **U.S. workers wages up in Nov.**
Compensation earned by U.S. workers rose 0.3% in Nov. The increase in wages and salaries was the best since April, and helped to push up total personal incomes by 0.4% in Nov to an annual rate of \$12.2 trillion.
- ❖ **China spends \$86 bln on stimulus**
China plans to spend 588.5 billion yuan (\$86.2 billion) next year on stimulus projects as part of its ongoing efforts to buttress the economy.

Market Talk

Food inflation down by 1.2%

Primary articles group declined by 0.3 percent to 284.7(Prov) from 285.5 (Prov) for the previous week.

The annual rate of inflation stood at 14.66 percent (Prov) for the week ended 12/12/2009 as compared to 14.98 percent (Prov) for the previous week.

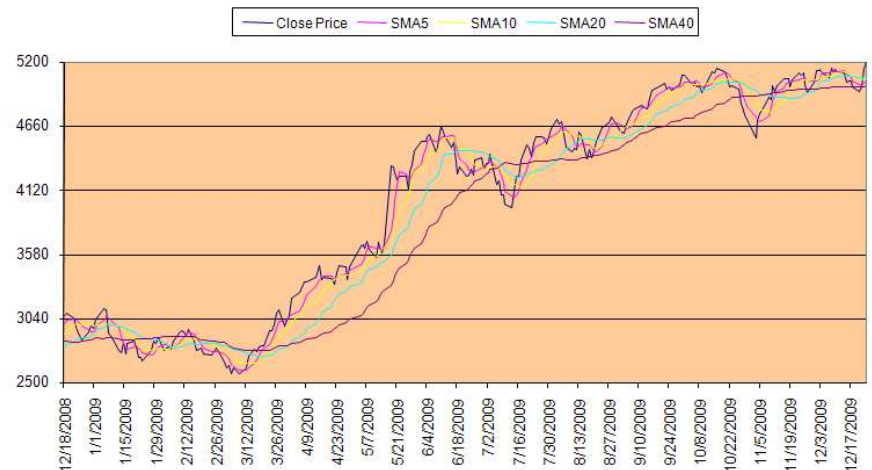
The index for ' Food Articles ' group declined by 1.2 percent to 288.8 (Prov) from 292.2 (Prov) on WoW basis due to lower prices of wheat (5%), bajra(4%), fruits & vegetables and barley (2 % each) and rice, condiments & spices, tea, masur and maize(1% each). However, the prices of moong (2%) and jowar (1%) moved up

The index for ' Non-Food Articles 'group rose by 2.4 percent to 250.7 (Prov) from 244.8 (Prov) on WoW basis due to higher prices of tobacco (33 %), raw cotton (6%), raw rubber (4 %), fodder and copra (3 % each) and raw jute, groundnut seed and logs & timber (1 % each). However, the prices of raw silk (2 %) declined.

Fuel, Power, Light remained unchanged at their provisional level of 344.9 and 3.95% respectively. The rate of inflation was (-) 0.27 percent during the corresponding week of the previous year.

Index Chart

Index Snapshot



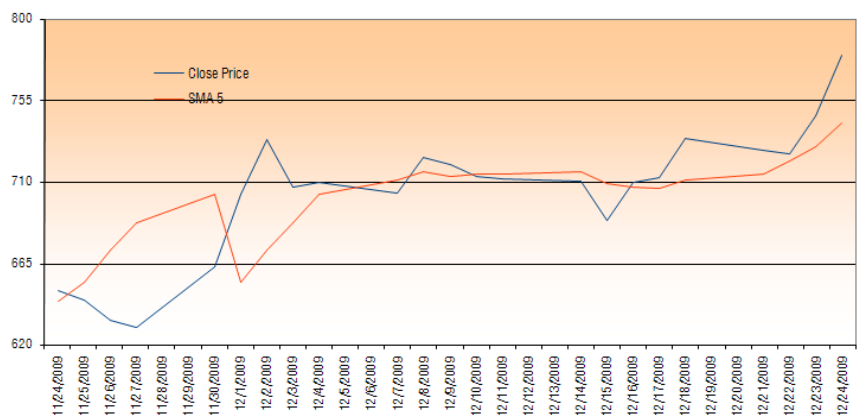
- ❖ Stock markets opened on a firm note extending last day's solid surge on higher Asian stocks. However, the market soon retraced from day's high on profit booking. In mid morning session the market regained positive zone led by Realty, CD, Auto, Metal, Oil & gas sectors. Midcaps & smallcaps also outperformed. Buying in Realty, Auto and Metal stocks helped key benchmark indices to log small gains in late morning trade. Markets were trading flat led by CD, Realty, Auto, Metal, Oil & gas sectors in the early afternoon session. In afternoon session the S&P CNX Nifty was hovering around 5150 level with a choppy trading session. However markets zoomed and Nifty was trading at 2009 year high in the late afternoon session where all Bse sectoral indices in demand. Ultimately the markets made a strong close. Among the Nifty stocks TATAMOTORS, HINDALCO, RELINFRA, HEROHONDA surged higher while IDEA, RANBAXY, JPASSOCIAT, BHARTIARTL lagged behind.
- ❖ BSE Midcap Index ended higher 47.47 points or 0.72% to 6641.14 while Smallcap Index closed higher 48.62 points or 0.60% at 8120.71
- ❖ NSE Nifty touched an intra-day high of 5197.90 and low of 5129.05 while BSE Sensex touched an intra-day high of 17413.69 and low of 17198.09.
- ❖ Finally Nifty ended higher by 33.80 points at 5178.40 and Sensex closed higher by 129.50 points at 17360.61.
- ❖ TATAMOTORS, HINDALCO, RELINFRA, HEROHONDA, TATASTEEL were the major gainers where as IDEA, RANBAXY, JPASSOCIAT, BHARTIARTL and POWERGRID were the major loser among the Nifty stocks.
- ❖ Nifty may find support at around 5125 and resistance at around 5210

INDEX	LTP	PREVIOUS CLOSE	%CHANGE
SENSEX	17360.61	17231.11	0.75%
S&P CNX NIFTY	5178.40	5144.60	0.66%
CNX NIFTY JUNIOR	10357.95	10282.25	0.74%
CNX IT	5829.70	5815.00	0.25%
BANK NIFTY	8968.10	8919.05	0.55%
CNX 100	5097.35	5063.45	0.67%
S&P CNX DEFTY	3841.15	3806.40	0.91%
S&P CNX 500	4300.35	4274.85	0.60%
CNX MIDCAP	7392.85	7341.60	0.70%
NIFTY MIDCAP 50	2625.85	2613.60	0.47%

Top Gainer

Market Gainer

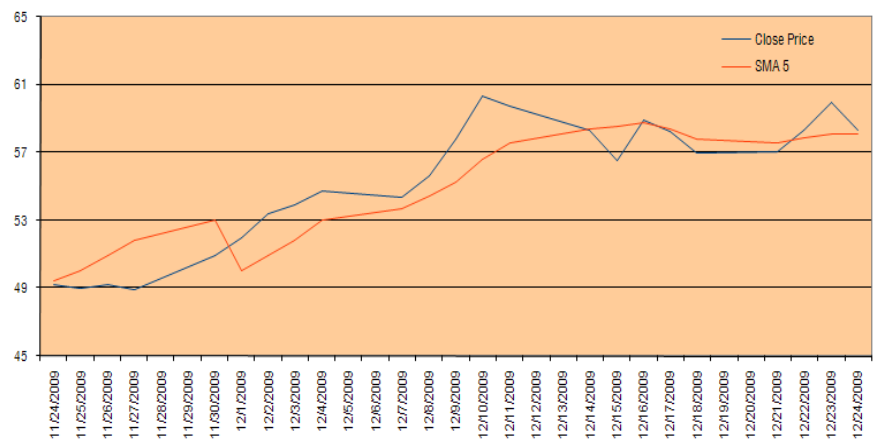
- ❖ TATAMOTORS finished as the top performer among the Nifty stocks due to position build up. The scrip touched an intra-day high of Rs 787.85 and low of Rs 747.00. The total traded volume for the script was 4852186 shares. It closed up by 4.17% to Rs 777.60
- ❖ Immediate short-term resistance for the counter exists at around Rs 805



Top Loser

Market Loser

- ❖ IDEA finished as worst performer. The scrip touched an intra-day high of Rs 60.70 and low of Rs 57.80. The total traded volume for the scrip was 4401559 shares. It closed down by 2.50% to Rs 58.45
- ❖ Immediate short-term support for the counter exists at around Rs 57.50



Derivative Watch

- ❖ Nifty December series futures witnessed long position build-up. Open Interest has been increased by 41580 contracts at the end of the day.
- ❖ Long position build up for the December series has been observed in RELIANCE, ICICIBANK, SUZLON, LT, DLF, TATAMOTORS, BHEL, SESAGOA, HEROHONDA.
- ❖ Short build for the December series has been witnessed in BHARTIARTL, PNB, PANTALONR, DRREDDY, JPASSOCIAT, GMRINFRA, UNITECH, RELCAPITAL
- ❖ Position unwinding for December series has been observed in ACC, HDIL, GAIL, WELGUJ, TATASTEEL, INDIACEM, TCS, SAIL, RCOM, IDEA

Derivative Watch

SYMBOL	Expiry Date	LTP	Prev. LTP	Change in	(%) change	Open Interest*	Prev. Open Interest	Change in*	(%) change
NIFTY	31-Dec-09	5177	5156.85	20.15	0.39%	453627	412047	41580	10.09%
RELIANCE	31-Dec-09	1075.5	1069.7	5.8	0.54%	25992	25537	455	1.78%
ICICIBANK	31-Dec-09	864.7	862.95	1.75	0.20%	19678	19096	582	3.05%
SUZLON	31-Dec-09	88.75	88.65	0.1	0.11%	15705	15330	375	2.45%
IT	31-Dec-09	1686	1675.1	10.9	0.65%	15387	14537	850	5.85%
DLF	31-Dec-09	371	367.4	3.6	0.98%	13270	12280	990	8.06%
RELINFRA	31-Dec-09	1099.9	1074.35	25.55	2.38%	12715	12663	52	0.41%
TATAMOTORS	31-Dec-09	778	746.65	31.35	4.20%	12273	10994	1279	11.63%
ESSAROIL	31-Dec-09	141.75	138.75	3	2.16%	11286	11019	267	2.42%
GTOFFSHORE	31-Dec-09	548.6	492.55	56.05	11.38%	1566	1256	310	24.68%
BHEL	31-Dec-09	2367	2355.65	11.35	0.48%	8178	6834	1344	19.67%
HCC	31-Dec-09	150.8	141.05	9.75	6.91%	2005	1693	312	18.43%
STER	31-Dec-09	856.1	845.7	10.4	1.23%	8904	7813	1091	13.96%
SESAGOA	31-Dec-09	402.2	392.9	9.3	2.37%	7422	6523	899	13.78%
MCDOWELL-N	31-Dec-09	1299.8	1270.9	28.9	2.27%	3445	3076	369	12.00%
HEROHONDA	31-Dec-09	1734	1705.35	28.65	1.68%	7695	6889	806	11.70%
TATAMOTORS	31-Dec-09	778	746.65	31.35	4.20%	12273	10994	1279	11.63%
CAIRN	31-Dec-09	281.3	279.85	1.45	0.52%	4184	3772	412	10.92%
HDFCBANK	31-Dec-09	1705.7	1696.85	8.85	0.52%	8101	7413	688	9.28%
DLF	31-Dec-09	371	367.4	3.6	0.98%	13270	12280	990	8.06%
HCLTECH	31-Dec-09	375.4	373	2.4	0.64%	1258	1169	89	7.61%
BHARTIARTL	31-Dec-09	322	327.3	-5.3	-1.62%	21864	18852	3012	15.98%
PANTALOONR	31-Dec-09	374.7	375.1	-0.4	-0.11%	2443	2157	286	13.26%
PNB	31-Dec-09	908	908.15	-0.15	-0.02%	7943	7114	829	11.65%
DRREDDY	31-Dec-09	1190	1218.05	-28.05	-2.30%	1245	1123	122	10.86%
JPASSOCIAT	31-Dec-09	144.75	147.55	-2.8	-1.90%	8135	7538	597	7.92%
GMRINFRA	31-Dec-09	67.45	68.3	-0.85	-1.24%	10481	9792	689	7.04%
RENUKA	31-Dec-09	218.9	221.3	-2.4	-1.08%	4210	3998	212	5.30%
BHARTIARTL	31-Dec-09	322	327.3	-5.3	-1.62%	21864	18852	3012	15.98%
UNITECH	31-Dec-09	82	82.35	-0.35	-0.43%	13498	13476	22	0.16%
RELCAPITAL	31-Dec-09	851.7	852.45	-0.75	-0.09%	13118	13048	70	0.54%
GMRINFRA	31-Dec-09	67.45	68.3	-0.85	-1.24%	10481	9792	689	7.04%
ACC	31-Dec-09	863	858.1	4.9	0.57%	3576	3927	-351	-8.94%
FINANTECH	31-Dec-09	1364	1334.75	29.25	2.19%	2489	2728	-239	-8.76%
HDIL	31-Dec-09	365.95	360.9	5.05	1.40%	8506	9069	-563	-6.21%
WELGUJ	31-Dec-09	268.05	267.25	0.8	0.30%	7424	7913	-489	-6.18%
ANDHRABANK	31-Dec-09	107.45	105.65	1.8	1.70%	1358	1441	-83	-5.76%
ABIRLANUVO	31-Dec-09	911	881.7	29.3	3.32%	3080	3266	-186	-5.70%
GAIL	31-Dec-09	420.5	415.1	5.4	1.30%	1580	1672	-92	-5.50%
UCOBANK	31-Dec-09	55.95	55.85	0.1	0.18%	1213	1278	-65	-5.09%
TATASTEEL	31-Dec-09	615.15	604.6	10.55	1.74%	13430	13612	-182	-1.34%
INDIACEM	31-Dec-09	119.2	121	-1.8	-1.49%	4224	4858	-634	-13.05%
TCS	31-Dec-09	747	748	-1	-0.13%	3005	3381	-376	-11.12%
ICSA	31-Dec-09	178	179.8	-1.8	-1.00%	1562	1655	-93	-5.62%
SAIL	31-Dec-09	236.5	236.7	-0.2	-0.08%	5710	6007	-297	-4.94%
HINDPETRO	31-Dec-09	391.9	392.5	-0.6	-0.15%	2994	3139	-145	-4.62%
IDEA	31-Dec-09	58.5	59.9	-1.4	-2.34%	5712	5966	-254	-4.26%
RCOM	31-Dec-09	174.65	175.55	-0.9	-0.51%	23937	24262	-325	-1.34%
SBIN	31-Dec-09	2215	2215.3	-0.3	-0.01%	19975	20368	-393	-1.93%

* Provisional Data

Bulk Deals

DATE	SCRIP NAME	BUYER/SELLER	BUY/SELL	QNTY.	AVERAGE RATE
24-Dec-09	ATNINTER	HI-GROWTH CORPORATE SERVICES PVT. LTD.	BUY	90345	2.75
24-Dec-09	FIRSTWIN	KARISHMA R HARAN	BUY	142395	20.95
24-Dec-09	GAMMNINFRA	EMERGING INDIA FOCUS FUNDS	BUY	6000000	18.52
24-Dec-09	GOACARBON	ANUJ KATTA	BUY	46000	122.44
24-Dec-09	SHRIRAMEPC	C S HOLDINGS PRIVATE LIMITED	BUY	275000	226
24-Dec-09	SHRIRAMEPC	SMA PROFESSIONAL SERVICES PVT LTD.	BUY	225000	226.35
24-Dec-09	AUSTRAL	DYNAMIC STOCK BROKING (I) PRIVATE LIMITED	SELL	101660	9.14
24-Dec-09	AUSTRAL	RATANLALBRIJLALTAMAKHUWALA	SELL	1550000	9.08
24-Dec-09	FIRSTWIN	HARISHBHAI K PATEL	SELL	141239	20.95
24-Dec-09	FSL	ICICI LTD TRADING A/C	SELL	3298206	34.67
24-Dec-09	GAMMNINFRA	AMIF I LTD	SELL	10550000	18.88
24-Dec-09	LML	ADROIT FINANCIAL SERVICES PRIVATE LIMITED	SELL	7343	11.79
24-Dec-09	LML	TRANSGLOBAL SECURITIES LTD.	SELL	2366	12.34
24-Dec-09	SHRIRAMEPC	NEW VERNON INDIA LTD	SELL	500000	226.01
24-Dec-09	TUBEINVEST	ELARA CAPITAL PLC (DR)	SELL	1000000	63.86
24-Dec-09	ZANDUPHARM	EMAMI INFRASTRUCTURE LIMITED	SELL	6678	6234.89

Forthcoming Events

- ANNUAL/QUARTERLY RESULTS OF THE FOLLOWING COMPANIES DUE ON 04/01/2010
- ❖ NO RECORD
- CORPORATE ACTION OF THE FOLLOWING COMPANIES DUE ON 04/01/2010
- ❖ Lanco Infratech Limited FV SPLIT RS.10 TO RE.1
- ❖ Avaya GlobalConnect Limited AGM/DIV-RS.3.50 PER SHARE
- ❖ Rural Electrification Corporation Ltd INTERIM DIVIDEND

Investment Picks

□ SCRIPT NAMES

- ❖ Reliance Inds
- ❖ NTPC
- ❖ BHEL
- ❖ Tata Steel
- ❖ Cipla
- ❖ JP Associates
- ❖ IDFC
- ❖ Unitech
- ❖ Century Textiles
- ❖ Welspun Gujarat
- ❖ GMR Infra
- ❖ Punj Lloyd
- ❖ Rolta
- ❖ HDIL
- ❖ Biocon
- ❖ TIL
- ❖ Balrampur Chini
- ❖ IFCI
- ❖ Tanla Solution
- ❖ Wockhardt
- ❖ GSPL
- ❖ Hexaware
- ❖ GVK Power
- ❖ HCC
- ❖ IVRCL Infra

D I S C L A I M E R

This document has been prepared by Shriram Insight Share Brokers Ltd. and is meant for sole use by the recipient and not for circulation. This document is not to be reported or copied or made available to others. The information contained herein is from sources believed reliable. It should not be considered to be taken as an offer to sell or a solicitation to buy any security or as an official confirmation of any transaction. We do not represent that it is accurate or complete and it should not be relied upon as such. This document is prepared for assistance only and is not intended to be and must not alone be taken as the basis for an investment decision. The investments discussed or recommended in this report may not be suitable for all investors. Shriram Insight Share Brokers Ltd stock Recommendation Service is a general recommendation service and is not to be construed as an individual investor specific Portfolio Management and Advisory Service.

The user assumes the entire risk of any use made of this information. Each recipient of this document should arrive at an independent evaluation of an investment in the securities of companies referred to in this document and should consult its own advisors to determine the merits and risks of such an investment.

Shriram Insight Share Brokers Ltd shall not be responsible for any loss or liability incurred to the user as a consequence of his or any other person on his behalf taking any investment decisions based on the information, recommendations, research reports, analysis, quotes, etc. provided on the web site

Shriram Insight Share Brokers Ltd shall also not be liable for errors, omissions or typographical errors, disruption delay, interruption, failure, deletion or defect of/in the Service provided by it.

All Users of the Service in countries other than India understand that by using the Service, they may be violating the local laws in such countries. If the User chooses to access the Service from outside India, he shall be responsible for compliance with foreign and local laws.