



29TH DEC 2009

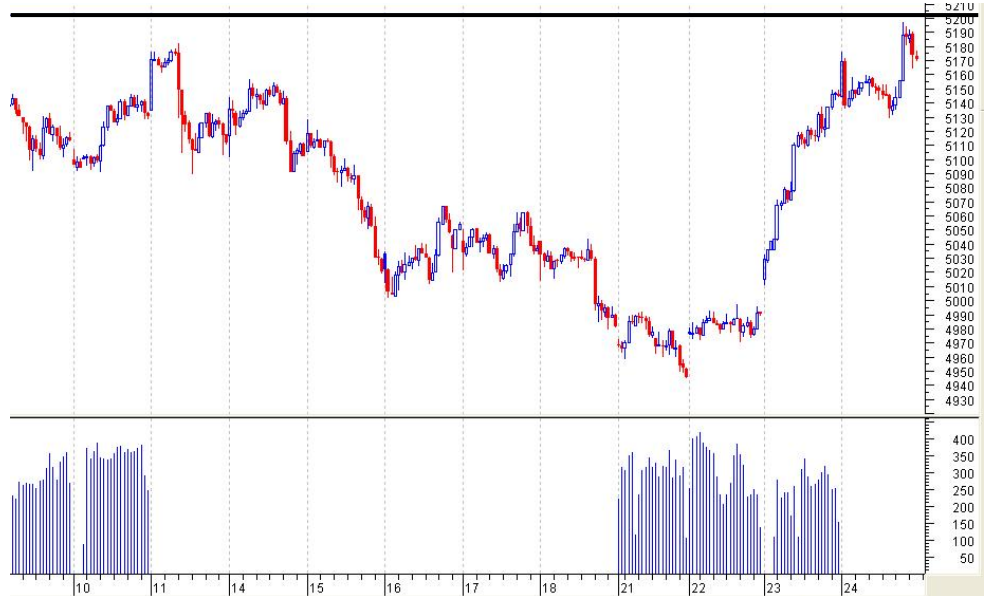
Market Data (5P.M IST)

Index	Close	Point Change	% age Change
BSE Sensex	17360	+129	+0.75%
NSE Nifty	5178	+33	+0.66%
S&P 500	1126	+5.8	+0.53%
Dow Jones	10520	+53	+0.51%
NASDAQ	2285	+16	+0.71%
FTSE	5402	+30	+0.56%

CONTACT PERSON:

PERVEZ DANISH

NIFTY DAILY WATCH



DAILY NIFTY CHART:

	LTP	S3	S2	S1	R1	R2	R3
NIFTY	5183	5070	5100	5128	5200	5252	5300
SENSEX	17360	16600	16720	17190	17460	17520	17800

COMMENTARY:

In the first half session Indian market remained flattish but buying activity witnessed in the 2nd half and market. SENSEX closed at 17360, up 129 points and Nifty at 5178, up 33 points from the previous close. CNX MIDCAP index was up 0.70% and BSE SMALLCAP index was up 0.60%. Top gainers included TATAMOTORS, HINDALCO, RELINFRA, TATASTEEL and M&M. top losers included JPASSOCIATE, BHARTIARTL, RCOM, GRASIM, IDEA. RANBAXY and CIPLA.

NEXT SESSION.....

NIFTY may take support at 5106 and 5129; however 5070 is a support in down side. If nifty sustained above 5200 level it may target 5253 and 5300. Sensex may face a strong resistance around 17460. Any dip in market in the next session may be taken as a buying opportunity; key support levels should be kept in view. Having F&O expiry ahead, market is expected to remain extremely volatile.

EXPECTED BULLISH STOCKS:

RELINFRA, IBREALEST, HCLTECH, RELIANCE, ICICIBANK, BPCL, NTPC, HPCL, PNB, GLENMARK, SESAGOA, NALCO, STER, JETAIRWAYS, SPICE JET.

EXPECTED BEARISH STOCKS:

BHARTIARTL, APTECH, KOTAKBANK, WIPRO, PUNJLLOYD, JINDALSTEEL, GRASIM, DRREDDY, CIPLA, JP ASSOCIATES.

NIFTY AND BANK NIFTY FUTURE:

NIFTY FUTURE has strong resistance at 5210 and support at 5105.

BUY NIFTY FUT ABOVE 5211 SL 5179 TARGET 5250-5290.

Risky traders may take short position in NIFTY FUT at gains with stop loss 5211.

Traders may also get buying opportunity in NIFTY FUT at declines with strict stop loss 5105.

BUY BANK NIFTY FUT ABOVE 9040 SL 9010 TARGET 9070-9100-9140.

BANK NIFTY FUT above 9150 may target 9200.

Bank nifty future has strong support at 8940 and 8860.

INTRADAY TRADING STRATEGY.

SL No	TRADE BUY/SELL	SCRIP SYMBOL	ENTER	STOP LOSS	TARGET
1.	BUY	CROMPGRE AV	ABOVE 425	BELOW 419	431-438-446
2.	BUY	TORNTPOW ER	ABOVE 326	BELOW 320	332-336-342
3.	BUY	CANBK	ABOVE 406	BELOW 401	412-416-420

F&O INTRADAY TRADING STRATEGY.

SL No	BUY/SELL	SCRIP SYMBOL	ENTER	STOP LOSS	TARGET
1.	BUY	RELINFRA FUT	ABOVE 1105	BELOW 1087	1120-1130-1142
2.	BUY	STER FUT	ABOVE 868	BELOW 858	878-885-892.

FOLLOW UPS.

OPTOCIRCUIT BUY CALL GIVEN ABOVE 230 TGT 235 MADE HIGH 233.5.

DIVISLAB BUY CALL GIVEN ABOVE 674 CASH NOT EXECUTED; FUTURE STOPLOSS TRIGGERED.

GLENMARK BUY CALL GIVEN ABOVE 283.5 TGT 288 MADE A HIGH 287.25

TATAMETALIKS BUY CALL GIVEN ABOVE 135 TGT 140 ACHIEVED

NOTE: ** FOLLOW ALL CALLS AFTER 2-3 MINUTES FROM OPENING BELL.

****TRADERS ARE SUGGESTED TO FOLLOW STRICTLY THE STOP LOSS GIVEN IN EACH CALL.**

The document is for information purposes only and ought to be construed as an advice on investment or any daily news letter: daily report other subject, neither be construed as an offer or solicitation for the purchase and sale. It is based on information available in the public domain and compiled from the sources believed to be reliable, though we have presentation to effect and opinions given herein based on such information ought to be taken in this background. For the information, statements and opinions given, made or expressed herein or from any omission here from, neither Fairwealth Securities Pvt. Ltd., its directors, officers, employees, subsidiaries, affiliates and accept any responsibility of whatsoever nature, nor shall they be held liable in any manner for the consequence of any action taken by you based on the information opinion contained herein. You are advised to take informed decisions in consultation with an independent advisor. Fairwealth Securities Pvt. Ltd., its directors, officers, employees, subsidiaries, affiliates and associates may have a position in any of the equities cash & futures mentioned in this report.

FAIRWEALTH SECURITIES

WWW.FAIRWEALTH.IN