



18<sup>TH</sup> NOV 2009

**Market Data ( 5P.M IST)**

Index	Close	Point Change	% age Change
BSE Sensex	17050	+18	+0.11%
NSE Nifty	5062	4.2	+0.08%
S&P 500	1109	+15	+1.45%
Dow Jones	10406	+136	+1.33%
NASDAQ	2197	+29	+1.38%
FTSE	5361	-21	-0.39%

CONTACT PERSON:

PERVEZ DANISH

**Nifty Daily Watch**



**DAILY NIFTY CHART:**

	LTP	S3	S2	S1	R1	R2	R3
<b>NIFTY</b>	<b>5062</b>	<b>4970</b>	<b>5000</b>	<b>5020</b>	<b>5085</b>	<b>5108</b>	<b>5125</b>
<b>SENSEX</b>	<b>17050</b>	<b>16400</b>	<b>16550</b>	<b>16870</b>	<b>17111</b>	<b>17100</b>	<b>17250</b>

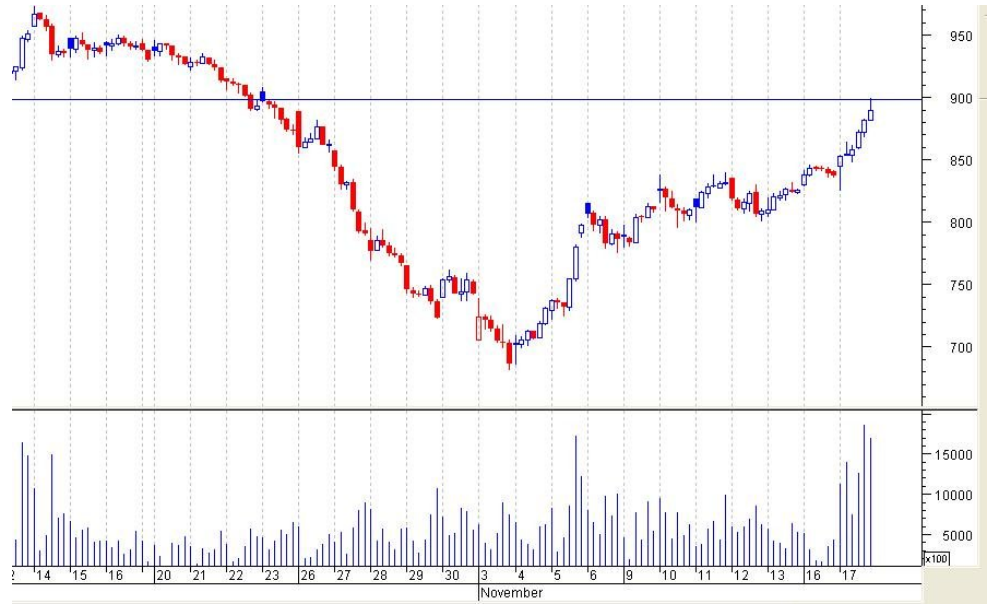
**Commentary:**

Taking positive cues from US market Indian market opened upside but weak Asian cues pushed it into red. After an extreme choppy session, Indian indices closed on a flat note. SENSEX closed at 17050, up 18 points and Nifty at 5062, up 4 points from the previous close. CNX MIDCAP index was down 0.15% and BSE SMALLCAP index was up 0.22%. Top gainers included TCS, HEROHONDA, RELINFRA, INFOSYS, HDFCBANK, RELCAPITAL, SPICECOMM, GLENMARK, GMDC, SINTEX and SAIL. Top losers are listed as ONGC, RCOM, ACC, DLF, BHARTIARTL, IDEA, HDIL, IVRCLINFRA, HINDCOPPER, UNITEDPHOSPHORUS and RCF. In the next session 5085-5100 would act as major resistance for NIFTY FUT. We expect selling pressure around these levels, so traders are suggested to take short position in NIFTY at these levels with close stop loss. Certain stocks like RELCAPITAL, ICICIBANK, CHAMBLFERT, MRPL, IRB, CAIRN, PRAJIND, MINDTREE, VOLTAS, THERMAX, JPASSOCIATE, ORBITCORP, ANANTRAJ, BGREENERGY SOUTHBANK and CROMPTONGREAV may trade in green while some others like PFC, TATASTEEL, SIEMENS, DLF, UNITECH, HDIL, IBREALEST, RCOM, ACC and BHARTIARTL would trade in red.

## TRADING STRATEGY

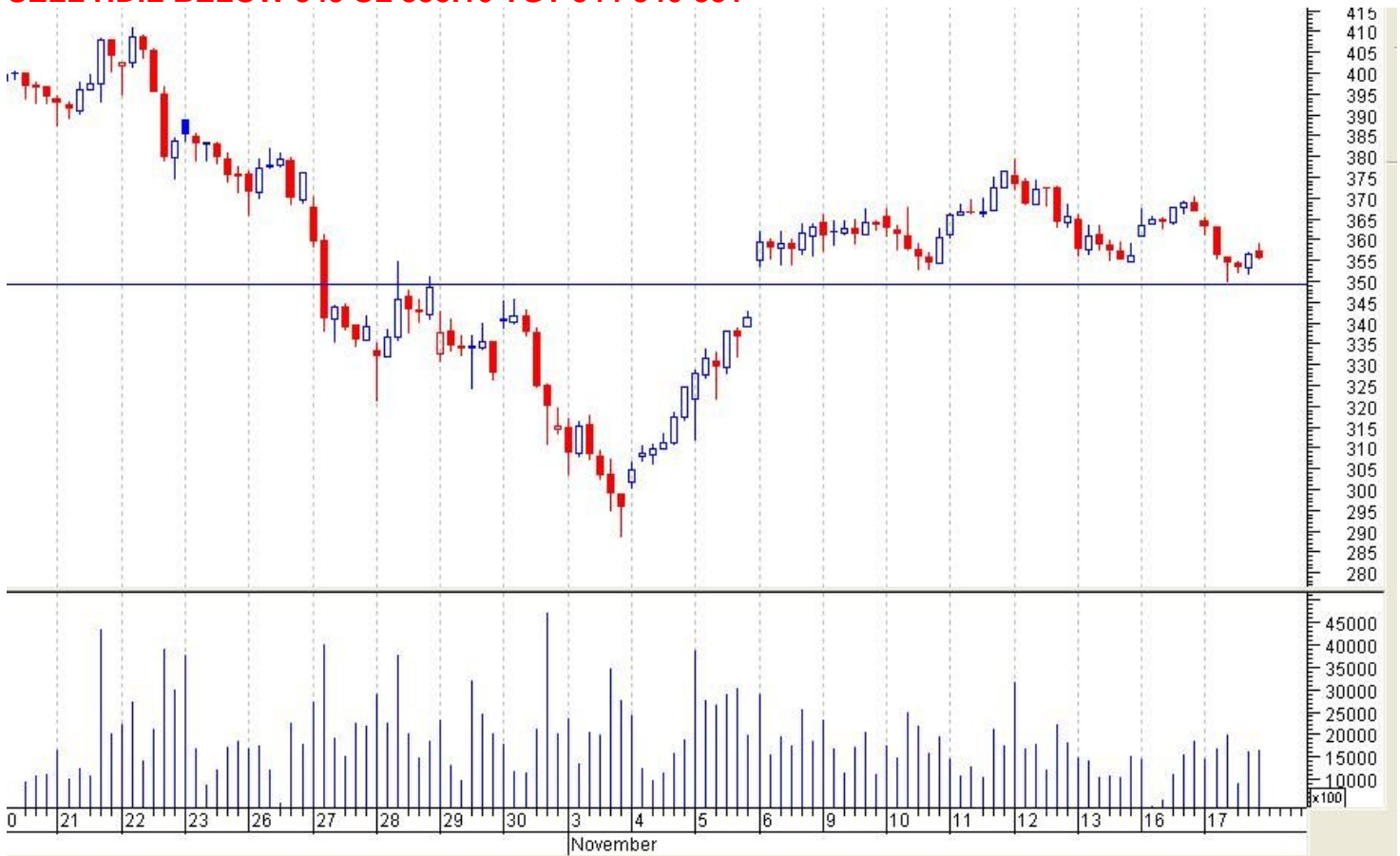
### RELIANCE CAPITAL

**BUY RELCAPITAL ABOVE 901 SL BELOW 892 TGT 909-916-930**



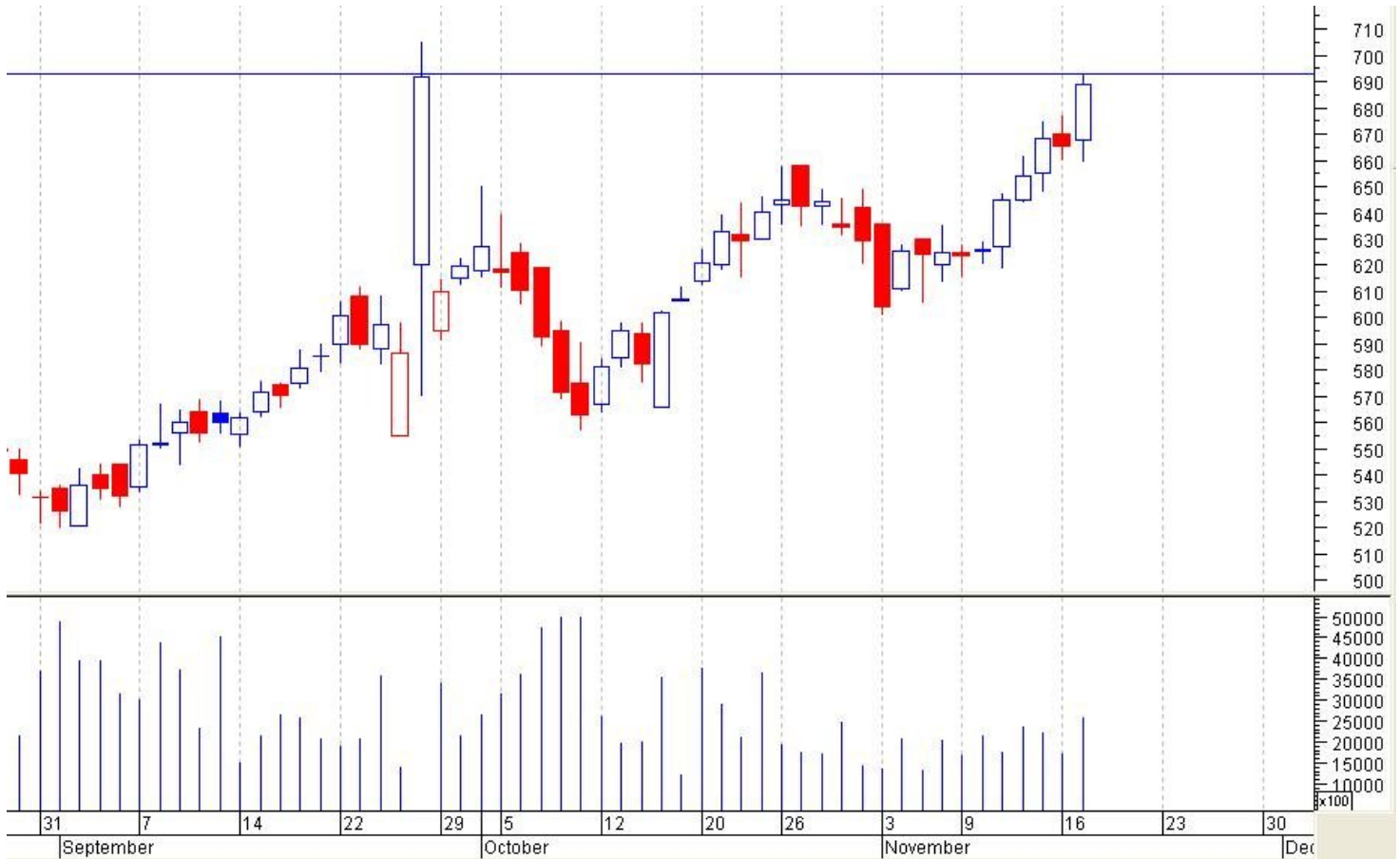
**HOUSING DEV & INFRA LTD**

**SELL HDIL BELOW 349 SL 355.10 TGT 344-340-331**



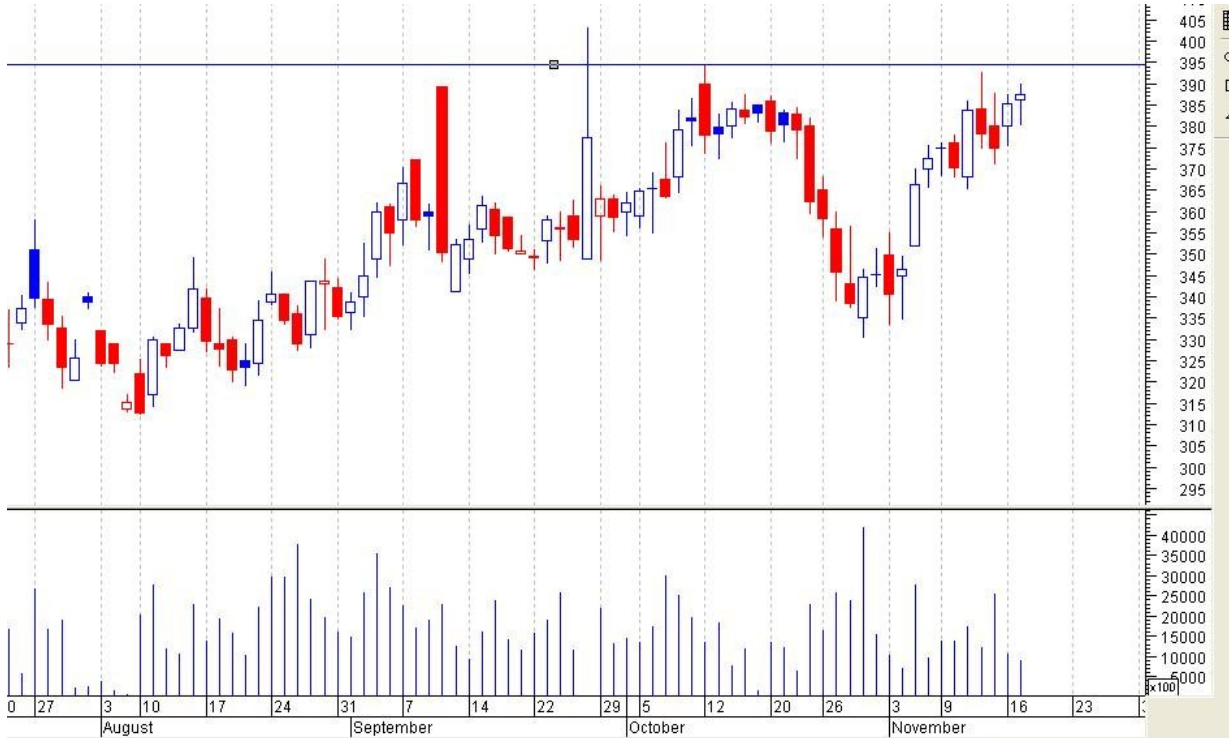
**TATA CONSULTANCY SERVICES**

**BUY TCS ABOVE 693 SL BELOW 685 TGT 700-704-709**



## GAIL

**BUY GAIL ABOVE 390 SL BELOW 385 TGT 395-400-404**



## FOLLOW UPS.

**JSWSTEEL BUY CALL GIVEN ABOVE 936 TGT 946 MADE HIGH 948.**

**BHUSHANSTL BUY CALL GIVEN ABOVE 1345 STOPLOSS TRIGGERED.**

**RCOM AND IRB BUY CALL NOT TRIGGERED.**

*The document is for information purposes only and ought to be construed as an advice on investment or any daily news letter: daily report other subject, neither be construed as an offer or solicitation for the purchase and sale. It is based on information available in the public domain and compiled from the sources believed to be reliable, though we have representation to effect and opinions given herein based on such information ought to be taken in this background. For the information, statements and opinions given, made or expressed herein or from any omission here from, neither Fairwealth Securities Pvt. Ltd., its directors, officers, employees, subsidiaries, affiliates and accept any responsibility of whatsoever nature, nor shall they be held liable in any manner for the consequence of any action taken by you based on the information opinion contained herein. You are advised to take informed decisions in consultation with an independent advisor. Fairwealth Securities Pvt. Ltd., its directors, officers, employees, subsidiaries, affiliates and associates may have a position in any of the equities cash & futures mentioned in this report.*

**FAIRWEALTH SECURITIES**

**WWW.FAIRWEALTH.IN**