

March 29, 2007

**FOR PRIVATE CIRCULATION ONLY**
**Sundar Parasuraman**  
 sundar.parasuraman@kotak.com  
 +91 22 6610 6625

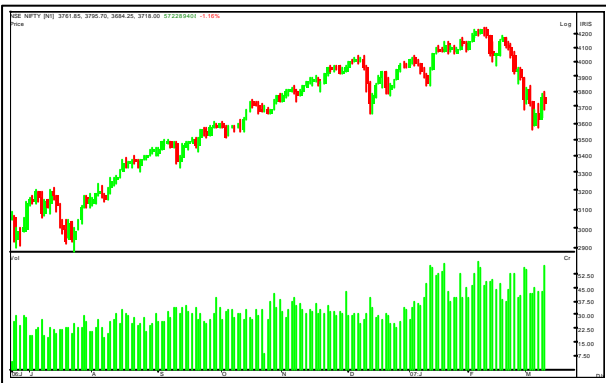
### Brief overview

- Market's continue to witness a sell off, breaching the important levels of 3800/3760 .The expiry for the march series in the FNO segment is likely to create volatility in the market
- The sugar stocks continue to remain in the lime light; especially Renuka sugars witnessed buying in the cash segment. Among the other stocks Ranbaxy and Aurobindo Pharma also witnessed buying.
- The continued signs of weakness in the international markets are likely to keep the sentiments in our market dampened too. The settlement day in the FNO series is likely to increase the volatility and make trading futures a difficult proposition.

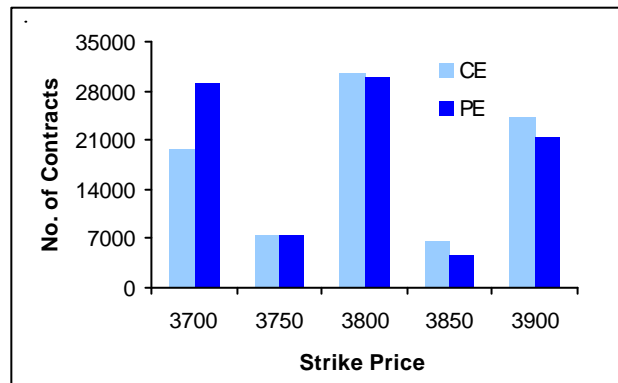
### Nifty analysis

- The COC remained at premium on the indices futures, but the breach of 3800/3760 does not auger well for the market.
- We suggest waiting for a clear trend to emerge before initiating any fresh positions.

### Nifty price chart



### Nifty options OI chart



### TRADING CALL

STOCK NAME	CMP	STOP LOSS	TARGET	COMMENT
NIL				

## Future statistics

### TOP OI RISES

SCRIP	% OI	OI	PRICE CHANGE (%)
IOB	34.63	1,123,950	2.09
J&KBANK	8.58	140,400	-1.88
HTMT	2.19	378,300	-5.56
IOC	-1.32	672,600	-2.08
BEL	-1.50	342,650	-1.34
PATNI	-2.65	334,100	-4.37
INDIANB	-5.43	536,800	-3.10
BHARATFORG	-5.91	2,578,000	-0.79
ABB	-6.98	201,200	-0.67

### TOP OI FALLS

SCRIP	% OI	OI	PRICE CHANGE (%)
STAR	-62.82	87,550	3.97
ABAN	-58.15	135,600	0.48
TATACHEM	-52.01	517,050	-1.21
BANKBARODA	-46.83	3,183,600	-0.81
BHEL	-45.37	412,200	0.74
NAGARCONST	-44.91	953,000	-4.06
HEROHONDA	-44.35	1,081,600	-1.54
KOTAKBANK	-44.22	488,400	-0.22
TATATEA	-42.99	379,225	-0.96

## Option statistics

### MOST ACTIVE CALLS

SCRIP	NO OF TRADES	FUTURES PRICE	OI	STRIKE
RELIANCE	648	1,347	297,750	1,380
RELIANCE	592	1,347	190,650	1,350
TATASTEEL	439	439	502,200	450
RPL	429	74	1,946,350	75
IFCI	413	32	4,284,000	33
TATASTEEL	402	439	312,525	440
IFCI	358	32	4,457,250	30
SAIL	338	110	1,341,900	110

### MOST ACTIVE PUTS

SCRIP	NO OF TRADES	FUTURES PRICE	OI	STRIKE
RELIANCE	567	1,347	175,800	1,350
RELIANCE	275	1,347	124,800	1,380
SAIL	169	110	672,300	110
TATASTEEL	168	439	167,400	440
SATYAMCOMP	149	455	55,800	460
RELIANCE	137	1,347	259,050	1,320
INFOSYSTCH	133	1,989	17,300	2,100
SBIN	120	971	29,500	990

## Cash statistics

### MOST ACTIVELY TRADED

SCRIP	TOTAL TRADED QUANTITY	TRADED VALUE	LTP
INFOSYSTCH	2,684,238	53,850	1,992
IFCI	99,493,278	32,962	32
RELIANCE	2,133,169	28,919	1,350
TCS	2,204,512	26,861	1,201
RCOM	5,839,716	24,523	420
SATYAMCOMP	5,243,624	23,876	456
BHEL	911,441	20,812	2,282
TATAMOTORS	2,554,496	18,669	720

### TOP PRICE CHANGES

SCRIP	PRICE CHANGE (%)	OI CHANGE (%)	OI
RENUKA	5.94	-18.56	287,500
STAR	3.97	-62.82	87,550
BAJAJHIND	3.68	-32.92	1,958,900
TRIVENI	3.64	-14.20	1,047,200
AUROPHARMA	3.57	-26.67	322,350
RANBAXY	2.97	-20.04	3,173,600
SESAGOA	2.71	-24.66	1,026,750
BALRAMCHIN	2.17	-22.31	4,221,600
IOB	2.09	34.63	1,123,950

## FII data

### DERIVATIVES (VALUE IN CRS)

	BUY	SELL	OPEN INTEREST
IndexFutures	3,944.09	3,807.77	14,755.87
Index Options	698.07	474.19	10,350.86
Stock Futures	2,751.82	2,820.33	16,566.11
Stock Options	0.98	0.87	57.13

### EQUITY

REPORTING DATE	DEBT/EQUITY	GROSS PURCHASES	GROSS SALES	NET INVESTMENT
28-Mar-07	Equity	3,471.1	3,181.6	289.5

### TRADERS GUIDE

STOCK NAME	CMP	SUPPORT	RESISTANCE	COMMENT
NIL				

### Derivatives Research team

Name	Sector	Tel No	E-mail id
Sundar Parasuraman	Quantitative analysis	+91 22 6610 6625	sundar.parasuraman@kotak.com
K. Kathirvelu	Production	+91 22 6634 1557	k.kathirvelu@kotak.com

### Disclaimer

This document is not for public distribution and has been furnished to you solely for your information and must not be reproduced or redistributed to any other person. Persons into whose possession this document may come are required to observe these restrictions.

This material is for the personal information of the authorized recipient, and we are not soliciting any action based upon it. This report is not to be construed as an offer to sell or the solicitation of an offer to buy any security in any jurisdiction where such an offer or solicitation would be illegal. It is for the general information of clients of Kotak Securities Ltd. It does not constitute a personal recommendation or take into account the particular investment objectives, financial situations, or needs of individual clients.

We have reviewed the report, and in so far as it includes current or historical information, it is believed to be reliable though its accuracy or completeness cannot be guaranteed. Neither Kotak Securities Limited, nor any person connected with it, accepts any liability arising from the use of this document. The recipients of this material should rely on their own investigations and take their own professional advice. Price and value of the investments referred to in this material may go up or down. Past performance is not a guide for future performance. Transactions involving futures, options and other derivatives involve substantial risk and are not suitable for all investors. Reports based on technical analysis centers on studying charts of a stock's price movement and trading volume, as opposed to focusing on a company's fundamentals.

Opinions expressed are our current opinions as of the date appearing on this material only. While we endeavor to update on a reasonable basis the information discussed in this material, there may be regulatory, compliance, or other reasons that prevent us from doing so. Prospective investors and others are cautioned that any forward-looking statements are not predictions and may be subject to change without notice. Our proprietary trading and investment businesses may make investment decisions that are inconsistent with the recommendations expressed herein. Kotak Securities has two independent equity research groups: Institutional Equities and Private Client Group. This report has been prepared by the Private Client Group. The views and opinions expressed in this document may or may not match or may be contrary with the views, estimates, ratings, and target price of the Institutional Equity Research Group of Kotak Securities Limited.

We and our affiliates, officers, directors, and employees world wide may: (a) from time to time, have long or short positions in, and buy or sell the securities thereof, of company (ies) mentioned herein or (b) be engaged in any other transaction involving such securities and earn brokerage or other compensation or act as a market maker in the financial instruments of the company (ies) discussed herein or act as advisor or lender or borrower to such company (ies) or have other potential conflict of interest with respect to any recommendation and related information and opinions. Kotak Securities Limited generally prohibits its analysts from maintaining financial interest in the securities or derivatives of any of the companies that the analysts cover. The analyst for this report certifies that all of the views expressed in this report accurately reflect his or her personal views about the subject company or companies and its or their securities, and no part of his or her compensation was, is or will be, directly or indirectly related to specific recommendations or views expressed in this report.

No part of this material may be duplicated in any form and/or redistributed without Kotak Securities' prior written consent.

Registered Office: Kotak Securities Limited, Bakhtawar, 1st floor, 229 Nariman Point, Mumbai 400021 India.