

Inside this report:

- Market Insight** 1.
 - Technical Call** 2-3.
 - Call Tracker** 4.
 - Other Indices** 5.
 - Pivot** 6.
- Support/Resistance Levels for Nifty-50

Market Insight:

The markets after a lot of volatility sustained the day in the positive territory for the second day. The support which indices took today was mainly because of short covering which happened on the pen-ultimate day of the settlement. If the market sustains the same levels tomorrow we could see the Rally continuing into the weekend.

Buying was seen in SUGAR, METALS, AUTO & OIL MARKETING COMPANIES. TRIVENI , RENUKA , BALRAMCHINI , BAJAJ HIND , TATA STEEL , SAIL , GAIL , HIND PETRO , STERLITE , STERLITE OPTICALS , TATA STEEL , MARUTI and ASHOK LEYLAND to name a few.

On the sell side we saw profit booking in stocks which were movers and shakers in the entire settlement and it was BULL OFFLOADING that was the reason for their negative close. S.KUMARSYN , EKC , NICOLAS PIRAMAL , CROMPTON GREAVES , TVS MOTORS & MAHSEAMLESS to name a few.

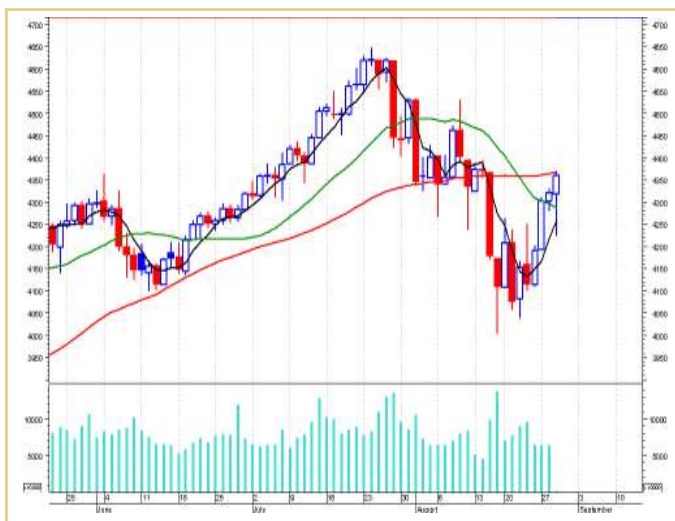
Based on the chart pattern developed to date, Nifty faces resistance at around 4410 and thereafter at around 4460 level while in case of BSE Sensex the Resistance will be at 15150 to 15310 levels.

On the support front, Nifty finds support at around 4270 - 4175 level & BSE Sensex will find support around 14710 & 14430.

Statistic:

	SENSEX	NIFTY
CLOSE	14993.04	4359.30
PIVOT	14871.56	4318.08
S1	14713.59	4267.57
S2	14434.14	4175.83
R1	15151.01	4409.82
R2	15308.98	4460.33

CNX - NIFTY



SENSEX



Warning:

- Short-term trading on the basis of technical is a high risk and skill oriented venture and may result in huge losses also. Traders doing so are doing at their own risk. We are not responsible for any damages.
- Mostly it is not advisable to buy/sell a stock if it touches the target price first and then comes within recommended range of buy/sell.
- Never wait for actual target to be reached book profits slightly before target price, if prices show sluggishness. Always follow stop losses to avoid larger losses.

TRADING LAWS

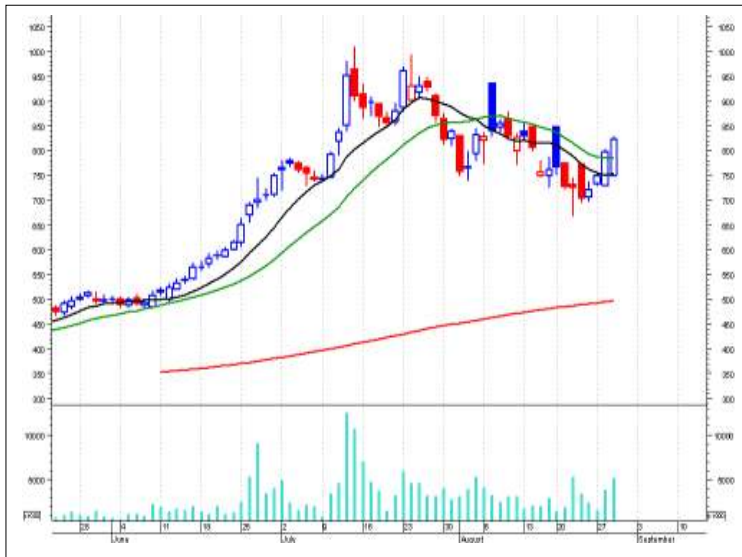
- A Trader not observing STOP LOSS, cannot survive for long .
- Never re-schedule your stop loss ,square up first and then take a fresh view.
- Book small losses by buying / selling near support / resistance, and look for big Gains, this will maximize the gains.
- Don't try to anticipate the change in main trend ,so don't go against trend .

Punter's Zone (High Risk Intraday calls for day traders)

Scrip	Price	Recommendation	Stop Loss	Target
GMR.	Rs.824.40.	Buy between Rs.818 and Rs.823.	Rs.815.	Rs.839.
CUMMINS.	Rs.372.90.	Buy between Rs.365 and Rs.370.	Rs.363.	Rs.384.
PRAJ IND.	Rs.190.60.	Buy between Rs.185 and Rs.188.	Rs.183.	Rs.198.
TATA MOTORS.	Rs.674.15.	Sell between Rs .675 and Rs.680.	Rs.685.	Rs.655.

(Note : These calls will expire in a single day and will not be tracked).

GMR.



CUMMINS.



PRAJ IND.



TATA MOTORS.



Note:

- Short-term trading on the basis of technical is a high risk and skill oriented venture and may result in huge losses also. Traders doing so are doing at their own risk. We are not responsible for any damages.
- Mostly it is not advisable to buy/sell a stock if it touches the target price first and then comes within recommended range of buy/sell.
- Never wait for actual target to be reached book profits slightly before target price.

Technical Calls

Scrip	Price	Recommendation	Stop Loss	Target
DLF.	Rs.596.55.	Buy between Rs. 590 and Rs.595.	Rs.587.50.	Rs.610.
CENTURY TEXTILES.	Rs.790.15.	Buy between Rs.785 and Rs.790.	Rs.780.	Rs.810.
PNB.	Rs.462.95.	Buy between Rs.455 and Rs.460.	Rs.452.50.	Rs.475.
ADLABS.	Rs.473.45.	Buy between Rs.465 and Rs.470.	Rs.462.50.	Rs.485.

DLF.



CENTURY TEXT.



PNB.



ADLABS.



Note:

- Short-term trading on the basis of technical is a high risk and skill oriented venture and may result in huge losses also. Traders doing so are doing at their own risk. We are not responsible for any damages.
- Mostly it is not advisable to buy/sell a stock if it touches the target price first and then comes within recommended range of buy/sell.
- Never wait for actual target to be reached book profits slightly before target price.

Call Tracker:

Scrip	Original Call Details	Fresh Call
JP ASSOCIATES	Buy between Rs.875 and Rs.900.SL – Rs.865, TGT –Rs. 960.	BOOK PROFITS.
SIEMENS	Buy between Rs.1225 and Rs1245. SL –Rs. 1215, TGT –Rs. 1300.	STOPLOSS TRIGGERED.
PUNJ LLOYD	Buy between Rs. 255 and Rs260. SL –Rs. 252.50. , TGT –Rs. 275.	BOOK PROFITS.
HCL –TECH.	Buy between Rs. 275 and Rs280. SL –Rs. 265. , TGT –Rs. 310.	BOOK PROFITS.
SBI.	Sell between Rs. 1550 and Rs.1560. SL –Rs. 1575. , TGT –Rs. 1500.	STOPLOSS TRIGGERED.
KOTAK BANK.	Buy between Rs. 670 and Rs.675. SL –Rs. 660. , TGT –Rs. 710.	BOOK PROFITS.
AMBUJA CEMENTS.	Sell between Rs. 134 and Rs.136. SL –Rs. 138. , TGT –Rs. 126.	BOOK PROFITS.

BSE MIDCAP DATA

Open	6385.25
High	6452.55
Low	6321.33
Close	6450.39
Change	40.75
Pivot	6408.09
S1	6363.63
S2	6276.87
R1	6494.85
R2	6539.31

BSE SMALLCAP DATA

Open	7798.18
High	7878.43
Low	7730.18
Close	7874.22
Change	65.78
Pivot	7827.61
S1	7776.79
S2	7679.36
R1	7925.04
R2	7975.86

CNX IT

Open	4680.20
High	4722.40
Low	4601.00
Close	4701.35
Change	-16.15
Pivot	4674.92
S1	4627.43
S2	4553.52
R1	4748.83
R2	4796.32

- BSE Small cap Index has exhibited a Bullish Hammer Candlestick. One may use the level of 7,730 as the stop loss level for long positions.
- BSE Midcap Index has exhibited a Bullish Hammer Candlestick. One may use the level of 6,320 as the stop loss level for long positions.
- CNX IT Index has exhibited a Bearish Hammer Candlestick. One may use the level of 4,600 as the stop loss level for long positions for the time being.

BSE MIDCAP INDEX



BSE SMALL CAP INDEX



CNX IT INDEX



Warning:

- Short-term trading on the basis of technical is a high risk and skill oriented venture and may result in huge losses also. Traders doing so are doing at their own risk. We are not responsible for any damages.
- Mostly it is not advisable to buy/sell a stock if it touches the target price first and then comes within recommended range of buy/sell.
- Never wait for actual target to be reached book profits slightly before target price, if prices show sluggishness. Always follow stop losses to avoid larger losses.

Support Resistance – Nifty 50

Name	Close	R2	R1	Pivot Point	S1	S2
ABB	1109.65	1151.22	1130.43	1098.22	1077.43	1045.22
ACC	1040.65	1072.82	1056.73	1028.92	1012.83	985.02
AMBUJACEM	133.35	136.72	135.03	133.22	131.53	129.72
BAJAJAUTO	2319.95	2397.72	2358.83	2295.12	2256.23	2192.52
BHARTIARTL	879.6	910.40	895.00	869.50	854.10	828.60
BHEL	1853.45	1942.68	1898.07	1819.08	1774.47	1695.48
BPCL	310.6	320.93	315.77	306.83	301.67	292.73
CIPLA	169.65	173.55	171.60	168.80	166.85	164.05
DABUR	101.35	104.12	102.73	101.12	99.73	98.12
DRREDDY	630.4	641.00	635.70	629.60	624.30	618.20
GAIL	320.8	339.27	330.03	313.77	304.53	288.27
GLAXO	1124.75	1155.58	1140.17	1119.58	1104.17	1083.58
GRASIM	2911.5	3065.03	2988.27	2874.13	2797.37	2683.23
HCLTECH	290.15	301.22	295.68	285.47	279.93	269.72
HDFC	1955.5	2010.80	1983.15	1952.35	1924.70	1893.90
HDFCBANK	1162.55	1213.85	1188.20	1154.35	1128.70	1094.85
HEROHONDA	637.8	652.47	645.13	632.57	625.23	612.67
HINDALCO	156.45	161.48	158.97	154.48	151.97	147.48
HINDPETRO	235.85	244.42	240.13	232.97	228.68	221.52
HINDUNILVR	201.95	206.65	204.30	201.15	198.80	195.65
ICICIBANK	857.1	875.40	866.25	853.75	844.60	832.10
INFOSYSTCH	1837.25	1892.08	1864.67	1842.58	1815.17	1793.08
IPCL	375.15	391.05	383.10	369.05	361.10	347.05
ITC	168.55	174.05	171.30	167.15	164.40	160.25
LT	2591.7	2675.63	2633.67	2557.03	2515.07	2438.43
M&M	654.4	671.43	662.92	650.48	641.97	629.53
MARUTI	833.55	854.98	844.27	827.28	816.57	799.58
MTNL	137.3	141.50	139.40	135.70	133.60	129.90
NATIONALUM	267.95	280.88	274.42	265.33	258.87	249.78
ONGC	833.5	869.07	851.28	818.22	800.43	767.37
PNB	462.95	473.45	468.20	461.45	456.20	449.45
RANBAXY	372.15	385.12	378.63	369.32	362.83	353.52
RCOM	519.1	530.73	524.92	514.98	509.17	499.23
REL	782.2	814.47	798.33	769.67	753.53	724.87
RELIANCE	1889.7	1938.30	1914.00	1879.50	1855.20	1820.70
RPL	111.85	113.95	112.90	110.95	109.90	107.95
SAIL	161.65	173.08	167.37	157.28	151.57	141.48
SATYAMCOMP	444.3	457.63	450.97	444.08	437.42	430.53
SBIN	1573.85	1635.22	1604.53	1554.32	1523.63	1473.42
SIEMENS	1214.25	1255.42	1234.83	1207.42	1186.83	1159.42
STER	615.25	646.82	631.03	603.22	587.43	559.62
SUNPHARMA	900.7	916.87	908.78	899.92	891.83	882.97
SUZLON	1228.55	1293.35	1260.95	1229.60	1197.20	1165.85
TATAMOTORS	674.15	698.18	686.17	665.58	653.57	632.98
TATAPOWER	685.2	700.13	692.67	680.33	672.87	660.53
TATASTEEL	659.95	711.85	685.90	637.95	612.00	564.05
TCS	1031.6	1062.93	1047.27	1024.13	1008.47	985.33
VSNL	381.9	401.30	391.60	375.30	365.60	349.30
WIPRO	470	483.97	476.98	465.02	458.03	446.07
ZEEL	294.5	308.57	301.53	291.27	284.23	273.97

Pivot Point: An Intra- Day Trading tool.

PP: Pivot Point: This is trigger point for Intra Day buy/sell based on the price range of the previous day. R1: Resistance one: 1st Resistance over PP. R2: Resistance two: 2nd Resistance over R1. S1: Support one: 1st support after PP. S2: Support Two: 2nd support after S1.

As per the tool, the trader should take BUY position just above PP and keep the stop loss of PP and the first target would be R1. If R1 is crossed then R2 becomes the next target with the stop loss at R1. Similarly if price goes below PP, the trader should SELL and keep the PP as Stop loss and the first target would be S1. If S1 is crossed then S2 becomes the next target with the stop loss at S1. This is an intra-day tool. The key to use of this tool is the -use of suggested STOP LOSS.

DISCLAIMER: This report has been issued by Anand Rathi Securities Limited (ARSL), which is regulated by SEBI. The information herein was obtained from various sources; we do not guarantee its accuracy or completeness. Neither the information nor any opinion expressed constitutes an offer, or an invitation to make an offer, to buy or sell any securities, options, future or other derivatives related to such securities ("related investment"). ARS and its affiliated may trade for their own accounts as market maker/ jobber and /or arbitrageur in any securities of this issuer(s) or in related investments, and may be on the opposite side of public orders. ARS, its affiliates, directors, officers, and employees may have a long or short position in any securities of this issuer(s) or in related investment banking or other business from, any entity mentioned in this report. This research report is prepared for private circulation. It does not have regard to the specific investment objectives, financial situation and the particular needs of any specific person who may receive this report. Investors should seek financial situation and the particular needs of any specific investing in any securities or investment strategies discussed or recommended in this report and should understand that statements regarding future prospects may not be realized. Investors should note that income from such securities, if any, may fluctuate and that each security's price or value may rise or fall. Past performance is not necessarily a guide to future performance. Foreign currency rates of exchange may adversely affect the value, price or income of any security or related investment mentioned in this report.