

June 8, 2007
FOR PRIVATE CIRCULATION ONLY
Sundar Parasuraman
 sundar.parasuraman@kotak.com
 +91 22 6610 6625

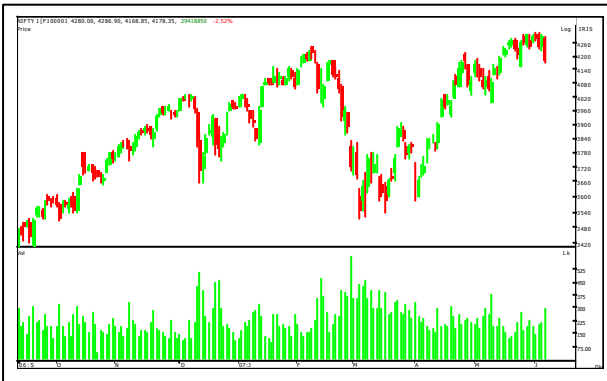
Brief overview

- Volatility crept into the market with the index trading in the broad range of 4160 and 4230 throughout the day. After a weak opening, the index recovered into positive territory but failed to sustain and closed with a loss of 0.45%.
- Suzlon rallied on getting an order from a US based company and similarly the IT stocks Satyam, Infosys, HCL Tech and TCS closed with gains. Auto heavy weights lost ground with average loss of 2% each. RCOM made a new high but closed only with marginal gains. Any pull rally is likely to create optimism in the TELECOM sector
- Midcap index closed flat with very stock specific movements happening. Financial Technologies and Patni closed with handsome gains. Aditya birla Novu continued to loose ground. Lack of market direction kept the index flat.

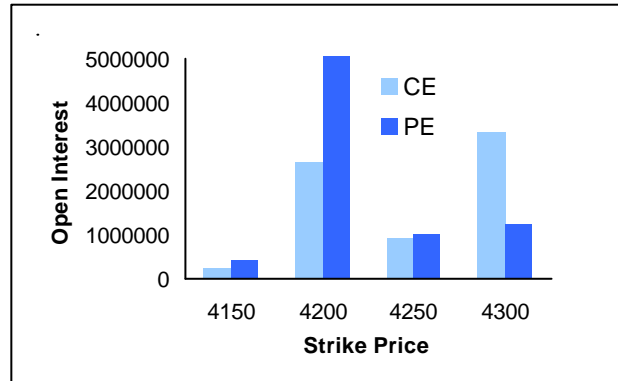
Nifty analysis

- The fall in the international markets is likely to keep our markets week and volatile
- We suggest traders avoid taking any fresh positions either on the long side or the short side as the volatility is likely to remain high with a negative bias

Nifty price chart



Nifty options OI chart



TRADING CALL

STOCK NAME	CMP	STOP LOSS	TARGET	COMMENT
NIL				

Future statistics

TOP OI RISES

SCRIP	% OI	OI	PRICE CHANGE (%)
RAJESHEXPO	72.42	966,350	7.74
ROLTA	28.36	1,274,850	0.55
FINANTECH	23.27	272,550	9.88
PENINLAND	21.87	723,250	-2.66
TITAN	18.20	1,098,598	-1.94
SUZLON	15.49	1,757,600	4.78
SATYAMCOMP	15.15	12,622,800	3.91
STAR	13.59	419,050	-2.94
PRAJIND	13.40	6,237,000	4.38

TOP OI FALLS

SCRIP	% OI	OI	PRICE CHANGE (%)
SHREECEM	-19.29	22,600	0.79
J&KBANK	-8.36	151,200	1.14
BIRLAJUTE	-6.42	693,600	-0.68
IVRCLINFRA	-6.08	5,124,500	2.80
PATNI	-5.16	3,032,250	3.07
NICOLASPIR	-5.15	943,635	1.10
HINDUJATMT	-4.60	264,500	-2.14
ADLABSFILM	-4.09	1,075,950	-1.61
FEDERALBNK	-4.05	276,900	-0.09

Option statistics

MOST ACTIVE CALLS

SCRIP	NO OF TRADES	FUTURES PRICE	OI	STRIKE
RELIANCE	1,403	1,665	178,050	1,710
IFCI	1,254	50	8,725,500	50
RCOM	929	521	461,300	520
RELIANCE	855	1,665	292,350	1,770
RELIANCE	741	1,665	223,050	1,740
HINDALCO	688	154	1,019,205	150
SBIN	631	1,361	163,500	1,410
RELIANCE	561	1,665	450,300	1,800

MOST ACTIVE PUTS

SCRIP	NO OF TRADES	FUTURES PRICE	OI	STRIKE
RELIANCE	421	1,665	65,550	1,650
SBIN	285	1,361	86,000	1,350
SBIN	269	1,361	93,250	1,380
SBIN	240	1,361	44,250	1,320
RELIANCE	232	1,665	59,100	1,710
RELIANCE	231	1,665	40,500	1,680
TATASTEEL	209	615	135,675	600
SATYAMCOMP	204	483	109,800	460

Cash statistics

MOST ACTIVELY TRADED

SCRIP	TOTAL TRADED QUANTITY	TRADED VALUE	LTP
RCOM	9,719,454	50,820	520
RELIANCE	2,589,690	43,698	1,669
IFCI	84,410,340	41,674	50
INFOSYSTCH	1,664,381	32,587	1,957
SBIN	2,148,431	29,564	1,361
SATYAMCOMP	4,920,518	23,505	481
SUZLON	1,556,686	21,309	1,373
SAIL	14,581,983	19,021	130
RELCAPITAL	1,750,881	17,205	979

TOP PRICE CHANGES

SCRIP	PRICE CHANGE (%)	OI CHANGE (%)	OI
FINANTECH	9.88	23.27	272,550
RAJESHEXPO	7.74	72.42	966,350
IFCI	4.99	11.09	107,076,375
SUZLON	4.78	15.49	1,757,600
MPHASIS	4.71	2.84	3,942,400
PRAJIND	4.38	13.40	6,237,000
CUMMINSIND	4.12	13.09	1,066,850
SATYAMCOMP	3.91	15.15	12,622,800
POLARIS	3.21	7.01	6,988,800

FII data

DERIVATIVES (VALUE IN CRS)

	BUY	SELL	OPEN INTEREST
Index Futures	1,192.72	2,805.93	14,774.71
Index Options	530.42	133.92	6,048.97
Stock Futures	544.69	438.59	18,449.49
Stock Options	0.05	3.15	34.47

EQUITY

REPORTING DATE	DEBT/EQUITY	GROSS PURCHASES	GROSS SALES	NET INVESTMENT
8-Jun-07	Equity	1412.65	1699.82	-287.17

TRADERS GUIDE

STOCK NAME	CMP	SUPPORT	RESISTANCE	COMMENT
NIL				

Derivatives Research team

Name	Sector	Tel No	E-mail id
Sundar Parasuraman	Quantitative analysis	+91 22 6610 6625	sundar.parasuraman@kotak.com
K. Kathirvelu	Production	+91 22 6634 1557	k.kathirvelu@kotak.com

Disclaimer

This document is not for public distribution and has been furnished to you solely for your information and must not be reproduced or redistributed to any other person. Persons into whose possession this document may come are required to observe these restrictions.

This material is for the personal information of the authorized recipient, and we are not soliciting any action based upon it. This report is not to be construed as an offer to sell or the solicitation of an offer to buy any security in any jurisdiction where such an offer or solicitation would be illegal. It is for the general information of clients of Kotak Securities Ltd. It does not constitute a personal recommendation or take into account the particular investment objectives, financial situations, or needs of individual clients.

We have reviewed the report, and in so far as it includes current or historical information, it is believed to be reliable though its accuracy or completeness cannot be guaranteed. Neither Kotak Securities Limited, nor any person connected with it, accepts any liability arising from the use of this document. The recipients of this material should rely on their own investigations and take their own professional advice. Price and value of the investments referred to in this material may go up or down. Past performance is not a guide for future performance. Transactions involving futures, options and other derivatives involve substantial risk and are not suitable for all investors. Reports based on technical analysis centers on studying charts of a stock's price movement and trading volume, as opposed to focusing on a company's fundamentals.

Opinions expressed are our current opinions as of the date appearing on this material only. While we endeavor to update on a reasonable basis the information discussed in this material, there may be regulatory, compliance, or other reasons that prevent us from doing so. Prospective investors and others are cautioned that any forward-looking statements are not predictions and may be subject to change without notice. Our proprietary trading and investment businesses may make investment decisions that are inconsistent with the recommendations expressed herein. Kotak Securities has two independent equity research groups: Institutional Equities and Private Client Group. This report has been prepared by the Private Client Group. The views and opinions expressed in this document may or may not match or may be contrary with the views, estimates, ratings, and target price of the Institutional Equity Research Group of Kotak Securities Limited.

We and our affiliates, officers, directors, and employees world wide may: (a) from time to time, have long or short positions in, and buy or sell the securities thereof, of company (ies) mentioned herein or (b) be engaged in any other transaction involving such securities and earn brokerage or other compensation or act as a market maker in the financial instruments of the company (ies) discussed herein or act as advisor or lender or borrower to such company (ies) or have other potential conflict of interest with respect to any recommendation and related information and opinions. Kotak Securities Limited generally prohibits its analysts from maintaining financial interest in the securities or derivatives of any of the companies that the analysts cover. The analyst for this report certifies that all of the views expressed in this report accurately reflect his or her personal views about the subject company or companies and its or their securities, and no part of his or her compensation was, is or will be, directly or indirectly related to specific recommendations or views expressed in this report.

No part of this material may be duplicated in any form and/or redistributed without Kotak Securities' prior written consent.

Registered Office: Kotak Securities Limited, Bakhtawar, 1st floor, 229 Nariman Point, Mumbai 400021 India.