



## FAIRWEALTH SECURITIES PVT. LTD.

*Wealth Management redefined*

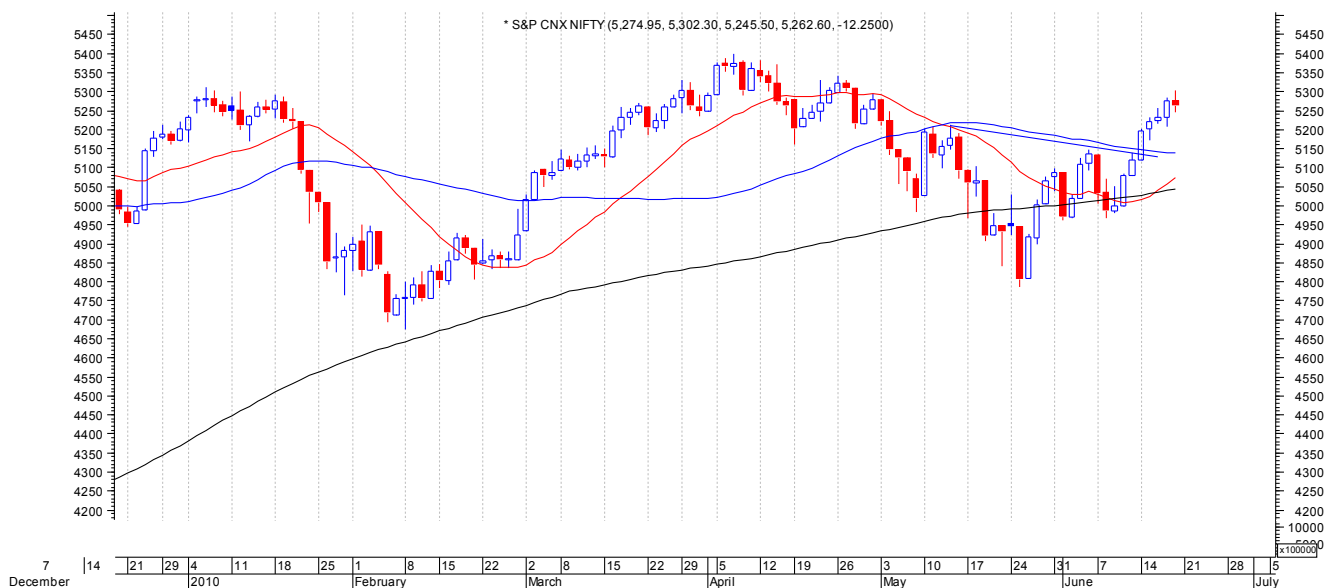
# WEEKLY OUTLOOK

21<sup>st</sup> JUNE , 2010

### Contact Person:

Hunny Tarika  
(Sr. Technical Analyst)  
hunny.tarika@fairwealth.in

## NIFTY (Daily)



Nifty tested level of 5217 after crossing above 5147-5152 & subsequently made a high of 5302 & closed at 5262. Nifty is in a higher high, higher bottom formation & any dip in Nifty around 5140-5170 should be used as a buying opportunity with stop loss placed below 4969. Resistance to the Nifty is seen at 5400-5550. Support for the Nifty is seen at 5187-5140-5073

Stock of the Week:

**SUNPHARMA**

Closing price: 1713

Recommendation: Buy if closes above 1730

Target: 1822-1860

Stop Loss: 1649



*SUN PHARMA is trading in a range of 1663-1725. So we recommend to buy the stock if closes above 1730, for a Target of 1822-1860 with stop loss placed below 1649.*

**EQUITIES**

	<b>SCRIP NAME</b>	<b>LAST CLOSE</b>	<b>TREND</b>	<b>OUTLOOK</b>
1	DCHL	124.50	DOWN	Sell around 127, Target 120, 115, SL 133.10
2	IDFC	168.50	UP	Buy around 165, Target 175, SL 159.90
3	MCDOWELL	1263	UP	Buy around 1230, Target 1300, SL closing below 1200
4	SINTEXIND	301.70	UP	Buy on dips, Target 318-325, SL 284.90

***\*The above stocks are recommended only for the current week***

### **FOLLOW UP OF CALLS:**

<b>S. N</b>	<b>SCRIP NAME</b>	<b>LAST CLOSE</b>	<b>RECOMMENDATION</b>	<b>OUTCOME</b>
1	HDFC BANK	1992	Buy on dips ,Target 2010-2100	High Made 1999
2	SIEMENS	731	Buy on dips ,Target 763-780,SL 679	High Made 737
3	TATA MOTORS	800	Buy if closes above 777,Target 830-850,SL 719	High Made 812
4	CANARA BANK	416	Sell if closes below 425,Target 400,SL 436.10	Low Made 415
5	HPCL	339	Sell on rise ,Target 334,SL 361.60	SL Triggered

*(Source:All the information and opinions mentioned above are purely based on Technical Analysis)*

#### **Disclaimer**

*The document is for information purposes only and ought to be construed as an advice on investment or any other subject, neither be construed as an offer or solicitation for the purchase and sale of any other subject, nor be construed as an offer or solicitation for the purchase and sale of any Equity cash & futures. It is based on information available in the public domain and compiled from the sources believed to be reliable, though we have not independently verified its authenticity, accuracy or completeness and as such do not make any representation to effect and opinions given herein based on such information ought to be taken in this background. For the information, statements and opinions given, made or expressed herein or from any omission here from, neither Fairwealth Securities Pvt. Ltd., its directors, officers ,employees,subsidiaries,affiliates and accept any responsibility of whatsoever nature, nor shall they be held liable in any manner for the consequence of any action taken by you based on the information opinion contained herein. You are advised to take informed decisions in consultation with an independent advisor. Fairwealth Securities Pvt. Ltd.,its directors ,officers, employees, subsidiaries ,affiliates and associates may have a position in any of the equities cash & futures mentioned in this report.*