

DAILY ROUND-UP

For Private Circulation Only

FRIDAY | JANUARY 29, 2010

Phone : +91 33 2359 4612
 +91 33 2359 4614
 +91 33 2358 1953
 E-mail : research@shriraminsight.com



Shriram Market Analysis
 & Research Team

Indian Market

INDICES	Close	Previous
S&P CNX Nifty	4867.25	4853.1
SENSEX	16306.87	16289.82

Sectoral Indices

INDICES	Close	Previous
BSE IT	5015.86	4991.76
BSE BANK	9373.76	9296.34
BSE FMCG	2776.97	2783.74
BSE PSU	9375.94	9346.92
BSE METAL	16215.58	16050.57

Asian Market

INDICES	Close	Previous
Nikkei225	10414.29	10252.08
HangSeng	20356.37	20033.07
StraitTimes	2757.68	2706.26
Shanghai	2994.14	2986.6
Kospi	1642.43	1625.48

Exchange Turnover (Rs. in Crore)

INDICES	Current	Previous
NSE Cash	20903.73	18732.59
NSE F&O	166193.03	158503.98

Previous FII Positions

ACTIVITIES	Cash	F&O
NET BUY	-	-
NET SELL	2212.29	749.25

Top Gainers

SCRIP NAME	Close	Previous
TATASTEEL	587.85	559.65
HCLTECH	345.65	330.20
AXISBANK	1017.75	972.75
SIEMENS	620.00	594.15

Top Losers

SCRIP NAME	Close	Previous
BHARTIARTL	314.00	322.90
RCOM	170.60	174.75
RPOWER	142.50	145.45
LT	1430	1458.05

Markets pared losses and broke the losing streak of six long sessions as Nifty moved higher than the psychological 4900 level mark in the opening trade. Metal, Realty and IT stocks helped the markets to recover grounds while FMCG remained subdued. Markets remained firm for almost the entire morning session. Nifty made a high of 4929.90 in this session but the early afternoon session saw the markets slide vigorously as selling was noticed in FMCG, CD stocks. Markets kept plunging as benchmark indices went passed their previous closing marks. As trade continued to the mid afternoon session markets traded flat with negative bias. But market cut all its losses led by buying pressure of Metal, Bank, Oil & gas, Pharma stocks in late afternoon session and closed in green terrain where stocks like TATASTEEL, HCLTECH, AXISBANK, SIEMENS edged higher and BHARTIARTL, RCOM, RPOWER, LT lagging behind among the Nifty stocks.

Economic News

- ❖ Crude Oil traded at US\$ 74.26 per barrel and Rupee traded at Rs.46.32 against each US\$.

Corporate News

- ❖ **Shipping Corporation of India Limited** (NSE : SCI) has signed a contract for construction and delivery of 2 MR Product Tankers of about 47,000 DWT each with the Foreign Economic & Technical Cooperation Co. of China, Changjiang National Shipping Group and China Changjiang National Shipping Group Corporation Jingling Shipyard.
- ❖ **Bharat Heavy Electricals** (NSE :BHEL) has signed a joint venture agreement with Madhya Pradesh Power Generating Company to set up 2x800MW supercritical Thermal Power Plant in Khandwa, Madhya Pradesh.
- ❖ **The Paper Products Limited** (NSE : PAPERPROD) in its meeting on 27 January 2010 has recommended dividend at the rate of Rs. 2 per share (100%) for the financial year ended 31 December 2009.
- ❖ **Solar Industries India Limited** (NSE : SOLARINDS) in its meeting on 27 January 2010 has declared interim dividend at the rate of Rs 3.50 per share (35%).
- ❖ **Natco Pharma Limited** (NSE : NATCOPHARM) at their meeting held on January 27, 2010 recommended payment of an interim dividend of Rs.2/- per share of Rs.10/- each for the year 2009-2010.

Global News

- ❖ **Siemens reduces nearly 2000 jobs**
Siemens was cutting 840 jobs at its Bad Neustadt an der Saale, Germany drive technologies division, another 300 jobs at that division's Erlangen, Germany location and 850 jobs at its industry solutions division.
- ❖ **Unemployed in Germany rises by 6,000 in January**
The number of unemployed in Germany rose by 6,000 in January, citing seasonally adjusted data. 3.617 million people are currently registered as unemployed. The unemployment rate rose to 8.2% from 8.1% in December.
- ❖ **Yahoo's profit stands at \$119 million**
Yahoo posted a fourth-quarter profit of \$119 million, a reversal from a loss of \$278 million in the final three months of 2008. Net revenue fell to \$1.26 billion from \$1.38 billion.
- ❖ **U.S new home sales fall 7.6%**
Sales of new U.S. homes fell 7.6% to an adjusted annual rate of 342,000 in December compared to 370,000 in November. According to the Commerce Department, this was outcome of expiration of a popular tax credit for the investors.
- ❖ **Fed keeps rate unchanged**
The Fed kept its target range for its bank lending rate at zero to 0.25 percent, where it's stood since December 2008.

Market Talk

Food inflation at 17.4%

The annual inflation in Food Articles group edged up to 17.40% in the week ended January 16 as against 16.81% (wow).

Inflation in the Primary Articles group stood at 14.66% in the week under review versus 13.93% in the preceding week. Inflation in the Non-food Articles space rose to 11.53% from 10.40%, while that in Minerals group remained unchanged at -5.18%.

Meanwhile, inflation in the Fuel & Power group declined to 5.70% in the week ended January 16 from 6.34% (wow)

Inflation in Mineral Oils group increased to 8.66% in the middle of January from 9.78% in the previous week. At the same time, inflation in the Electricity group stood unchanged at 1.95%.

The Wholesale Price Index (WPI), was 7.31% in December, rising from 0.5% in September.

Result Announcement

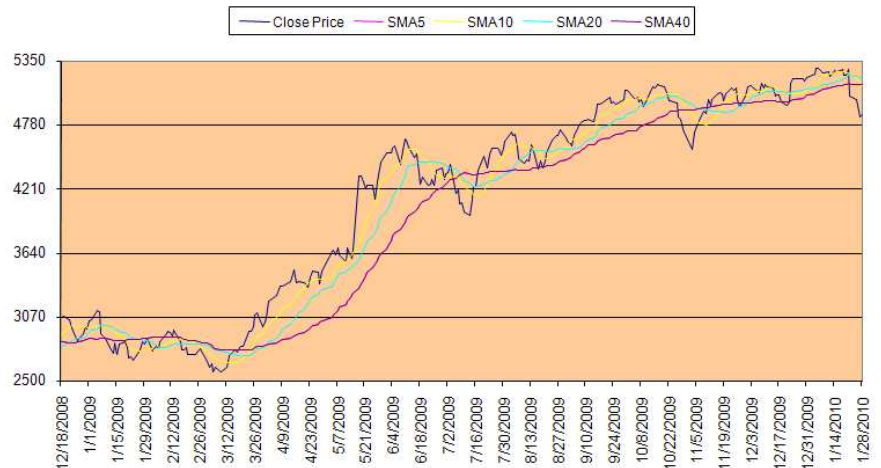
COMPANY	PERIOD	PROFIT AFTER TAX			NET SALES		
		CURR	PREV	% CHN	CURR	PREV	% CHN
Tata Steel Limited	Q3FY10(YOY)	1191.75	466.24	155.61%	6307.48	4735.68	33.19%
Bharat Petroleum Corpn. Ltd	Q3FY10(YOY)	379.09	799.84	-52.60%	32161.24	31884.48	0.87%
Aban Offshore Ltd.	Q3FY10(YOY)	73.59	55.87	31.72%	300.32	261.59	14.81%
eClerx Services Limited	Q3FY10(YOY)	21.15	16.22	30.39%	69.05	51.55	33.95%
Marico Limited	Q3FY10(YOY)	61.28	51.71	18.51%	505.39	500.44	0.99%
Motherson Sumi Systems Ltd.	Q3FY10(YOY)	60.02	11.52	421.01%	436.97	291.92	49.69%
Prakash Industries Ltd	Q3FY10(YOY)	66.03	37.06	78.17%	360.35	337.88	6.65%
United Phosphorus Limited	Q3FY10(YOY)	77.94	6.46	1106.50%	618.13	643.69	-3.97%
MRF Ltd.	Q3FY10(YOY)	119.41	-38.3	411.78%	1653.84	1351.3	22.39%
Jain Irrigation Systems Limited	Q3FY10(YOY)	57.36	55.64	3.09%	630.87	531.9	18.61%
Tide Water Oil Co. (India) Limited	Q3FY10(YOY)	14.51	5.21	178.50%	168.82	126.02	33.96%
Nippo Batteries Co. Limited	Q3FY10(YOY)	3.08	3.2	-3.75%	74.67	63.07	18.39%
UTV Software Communications Limited	Q3FY10(YOY)	40.19	7.66	424.67%	159.1	57.07	178.78%
Everest Industries Limited	Q3FY10(YOY)	4.71	-3.41	238.12%	152.73	128.02	19.30%
Shiv-Vani Oil & Gas Exploration Services Limited	Q3FY10(YOY)	24.28	16.76	44.87%	305.57	160.05	90.92%
Shree Ashtavinayak Cine Vision Limited	Q3FY10(YOY)	18.29	6.21	194.52%	160.8	83.12	93.46%
Bombay Dyeing & Mfg Co. Ltd	Q3FY10(YOY)	2.36	-57.8	104.08%	402.75	318.84	26.32%
Lanco Infratech Limited	Q3FY10(YOY)	114.51	58.73	94.98%	1313.52	1043.42	25.89%
Time Technoplast Limited	Q3FY10(YOY)	15.99	11.48	39.29%	160.21	120.15	33.34%
Aptech Limited	Q3FY10(YOY)	3.61	-0.9	501.11%	23.19	26.85	-13.63%
DLF Limited	Q3FY10(YOY)	224.43	178.06	26.04%	887.16	424.41	109.03%
KEI Industries Limited	Q3FY10(YOY)	4.18	-24.46	117.09%	243.72	250.05	-2.53%
TIPS Industries Limited	Q3FY10(YOY)	6.97	0.74	841.89%	49.65	7.42	569.14%
Tamil Nadu Newsprint & Papers Ltd	Q3FY10(YOY)	31.02	21.23	46.11%	239.62	242.93	-1.36%
Century Enka Ltd	Q3FY10(YOY)	23.86	-4.88	588.93%	310.08	257.04	20.63%
Cholamandalam DBS Finance Limited	Q3FY10(YOY)	7.52	-27.73	127.12%	233.51	238.46	-2.08%
Gokaldas Exports Limited	Q3FY10(YOY)	0.53	-15.53	103.41%	266.31	273.56	-2.65%
The Paper Products Limited	Q3FY10(YOY)	7.24	3.81	90.03%	130.37	142.79	-8.70%
Kansai Nerolac Paints Limited	Q3FY10(YOY)	36.29	21.25	70.78%	420.91	316.35	33.05%
Simbhaoli Sugars Limited	Q3FY10(YOY)	43.78	-11.86	469.14%	308.3	123.98	148.67%
Titagarh Wagons Limited	Q3FY10(YOY)	15.46	12.52	23.48%	136.17	130.31	4.50%
National Aluminium Company Limited	Q3FY10(YOY)	155.18	219.46	-29.29%	1386.47	1015.67	36.51%
IFB Agro Industries Ltd	Q3FY10(YOY)	3.88	0.92	321.74%	68.66	73.55	-6.65%
Manali Petrochemical Ltd	Q3FY10(YOY)	4.3	0.17	2429.41%	103.13	83.4	23.66%
Kalindee Rail Nirman (Engineers) Limited	Q3FY10(YOY)	0.26	2.96	-91.22%	37.57	72.58	-48.24%
Heritage Foods (India) Ltd.	Q3FY10(YOY)	3.27	0.16	1943.75%	221.71	197.51	12.25%
Ingersoll Rand (India) Ltd.	Q3FY10(YOY)	15.06	15.85	-4.98%	103.59	93.53	10.76%
The Indian Hotels Company Limited	Q3FY10(YOY)	64.88	83.85	-22.62%	422.31	381.34	10.74%
Genus Power Infrastructures Limited	Q3FY10(YOY)	-33.82	10.64	-417.86%	133.84	120.44	11.13%
Hindustan Organic Chemicals Ltd	Q3FY10(YOY)	-19.09	-40.49	52.85%	133.52	108.06	23.56%
Emco Limited	Q3FY10(YOY)	10.04	8.2	22.44%	208.09	207.94	0.07%
Munjal Showa Ltd	Q3FY10(YOY)	3.41	0.14	2335.71%	233.63	193.04	21.03%
Punjab Chemicals & Crop Protection Limited	Q3FY10(YOY)	-8.21	2.05	-500.49%	75.73	88.63	-14.55%

COMPANY	PERIOD	PROFIT AFTER TAX			NET SALES		
		CURR	PREV	% CHN	CURR	PREV	% CHN
NOCIL Limited	Q3FY10(YOY)	7.87	7.12	10.53%	105.03	110.52	-4.97%
Balaji Amines Limited	Q3FY10(YOY)	4.21	2.86	47.20%	63.67	50.88	25.14%
Natco Pharma Limited	Q3FY10(YOY)	12.09	11.28	7.18%	74.83	67.51	10.84%
Sutlej Textiles and Industries Limited	Q3FY10(YOY)	1.39	-8.12	117.12%	295.5	209.99	40.72%
Kalyani Steels Ltd	Q3FY10(YOY)	13.58	-8.63	257.36%	328.01	125.84	160.66%
Trent Ltd.	Q3FY10(YOY)	15.86	5.87	170.19%	146.83	122.98	19.39%
Atul Ltd.	Q3FY10(YOY)	5	15.72	-68.19%	308	279.73	10.11%
EIH Limited	Q3FY10(YOY)	22.33	33.27	-32.88%	222.04	231.74	-4.19%
Carborundum Universal Ltd	Q3FY10(YOY)	14.68	27.48	-46.58%	190.19	160.38	18.59%
FDC Ltd.	Q3FY10(YOY)	30.73	15.08	103.78%	158.37	127.92	23.80%
Torrent Pharmaceuticals Ltd.	Q3FY10(YOY)	63.22	55.99	12.91%	341.59	303.48	12.56%
Alchemist Ltd	Q3FY10(YOY)	4.46	3.47	28.53%	105.29	77.24	36.32%
Maharashtra Seamless Ltd	Q3FY10(YOY)	72.18	64.09	12.62%	370.55	577.51	-35.84%
Adani Enterprises Limited	Q3FY10(YOY)	30.49	55.94	-45.50%	2800.46	3162.48	-11.45%
West Coast Paper Mills Ltd	Q3FY10(YOY)	12.08	22.21	-45.61%	138.39	150.14	-7.83%
Hinduja Global Solutions Limited	Q3FY10(YOY)	23.4	12.99	80.14%	122.75	115.74	6.06%
Nagarjuna Construction Co. Ltd	Q3FY10(YOY)	47.85	36.26	31.96%	1186.54	1022.06	16.09%
Jyothy Laboratories Limited	Q3FY10(YOY)	16.84	13.47	25.02%	135.35	119.19	13.56%
Orbit Corporation Limited	Q3FY10(YOY)	32.54	-5.92	649.66%	149.6	8.25	1713.33%
Asian Granito India Limited	Q3FY10(YOY)	4.2	3.05	37.70%	101.68	67.57	50.48%
Gabriel India Ltd	Q3FY10(YOY)	5.79	0.04	14375.00%	183.34	121.07	51.43%
Everonn Education Limited	Q3FY10(YOY)	13.05	7.99	63.33%	59.04	34.53	70.98%
Blue Star Infotech Limited	Q3FY10(QOQ)	4.71	3.87	21.71%	27.18	26.47	2.68%
Hindustan Oil Exploration Co. Ltd	Q3FY10(YOY)	10.35	10.06	2.88%	32.64	11.74	178.02%

COMPANY	PERIOD	PROFIT AFTER TAX			NET INTEREST INCOME		
		CURR	PREV	% CHN	CURR	PREV	% CHN
Central Bank of India	Q3FY10(YOY)	306.44	353.26	-13.25%	730.5	671.94	8.72%
Oriental Bank of Commerce	Q3FY10(YOY)	289.43	252.19	14.77%	872.87	567.84	53.72%
Indian Overseas Bank	Q3FY10(YOY)	101.7	388.43	-73.82%	794.41	822.66	-3.43%
Dena Bank	Q3FY10(YOY)	134.52	140.36	-4.16%	283	352.45	-19.70%
CANARA BANK	Q3FY10(YOY)	1052.58	701.5	50.05%	1477.79	1244.33	18.76%

Index Chart

Index Snapshot



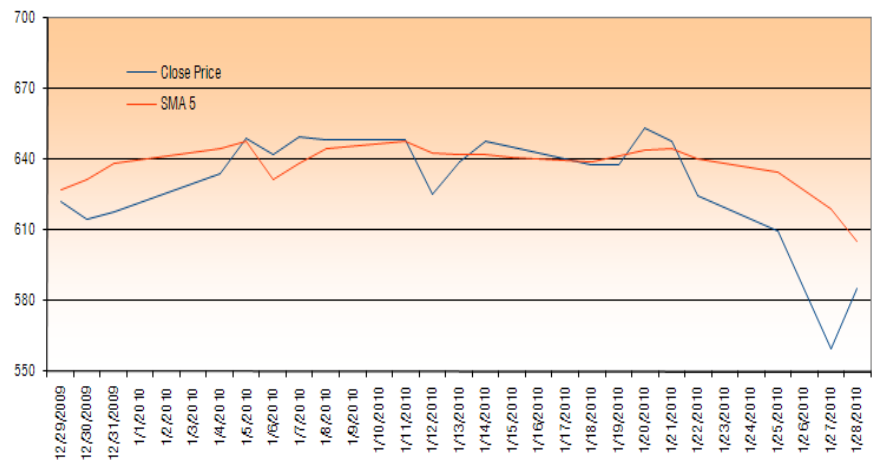
- ❖ Markets made a gap-up opening on the back of positive global cues. Metals, Realty, IT together gave the much needed thrust to the markets while FMCG was under pressure. Markets remained firm in the mid morning session and Nifty edged past the 4900 level mark and made a high of 4929.90. In the late morning session markets continued to stay firm on the back of buying in Metal, IT, Banks, Oil & Gas stocks. However suddenly markets took a downturn at the start of the afternoon session as FMCG, CD stocks crippled under selling pressure. In the mid afternoon session, markets moved lower than the previous close, hit fresh lows and traded flat. But soon recovered grounds as trade proceeded towards the late session and ultimately closed with marginal gains on the back of buying pressure of Metal, Realty, Oil & gas, Banking stocks while CG stocks were lagging behind.
- ❖ NSE Nifty touched an intra-day high of 4929.90 and low of 4824.95 while BSE Sensex touched an intra-day high of 16524.69 and low of 16182.14
- ❖ Finally Nifty ended higher by 14.15 points at 4867.25 and Sensex closed higher by 17.05 points at 16306.87
- ❖ TATASTEEL, HCLTECH, AXISBANK, SEIMENS were the major gainers where as BHARTIARTL, RCOM, RPOWER, LT were the major losers among the Nifty stocks.
- ❖ Nifty may find support at around 4820 and resistance at around 5000.

INDEX	LTP	PREVIOUS CLOSE	%CHANGE
SENSEX	16306.87	16289.82	0.10%
S&P CNX NIFTY	4867.25	4853.10	0.29%
CNX NIFTY JUNIOR	9905.65	9801.65	1.06%
CNX IT	5649.35	5599.00	0.90%
BANK NIFTY	8423.85	8329.80	1.13%
CNX 100	4804.15	4784.40	0.41%
S&P CNX DEFTY	3645.45	3626.90	0.51%
S&P CNX 500	4137.50	4125.50	0.29%
CNX MIDCAP	7138.20	7093.70	0.63%
NIFTY MIDCAP 50	2500.80	2492.25	0.34%

Top Gainer

Market Gainer

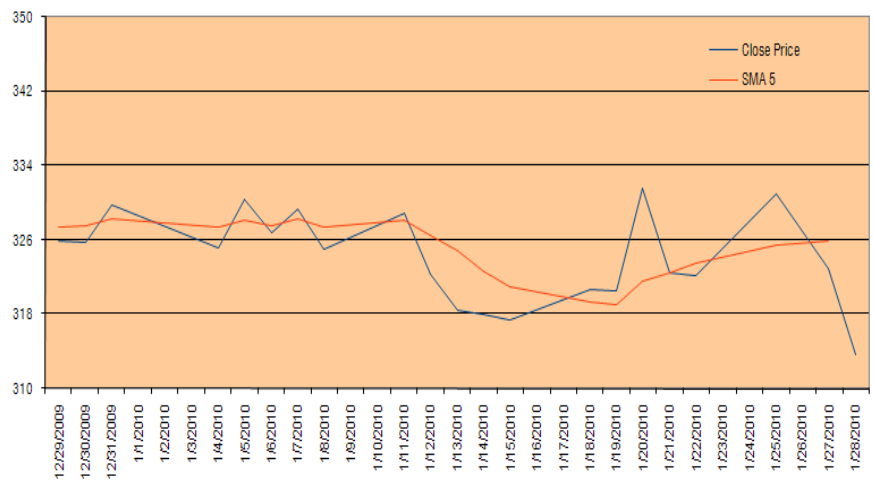
- ❖ TATASTEEL finished as the best performer. The scrip touched an intra-day high of Rs. 589.40 and low of Rs. 565. The total traded volume for the scrip was 12582874. It closed down by 5.04% to Rs. 587.85.
- ❖ Immediate short-term resistance for the counter exists at around Rs. 610.



Top Loser

Market Loser

- ❖ BHARTIARTL finished as worst performer. The scrip touched an intra-day high of Rs 327.85 and low of Rs 311. The total traded volume for the scrip was 7620843 shares. It closed down by 2.76% to Rs 314
- ❖ Immediate short-term support for the counter exists at around Rs 300.



Derivative Watch

- ❖ Nifty February series futures witnessed long position build up. Open Interest has been increased by 142834 contracts at the end of the day.
- ❖ Long position build up for the February series has been observed in CANBK, PTC, CHENNPETRO, PATNI, RELIANCE, SBIN, ICICIBANK, SUZLON.
- ❖ Short build for the February series has been witnessed in HEROHONDA, DIVISLAB, RCOM, OFSS, BHARTIARTL, LT, ORCHIDCHEM, ABIRLANUVO.

Derivative Watch

SYMBOL	Expiry Date	LTP	Prev. LTP	Change in	(%) change	Open Interest*	Prev. Open Interest	Change in*	(%) change
NIFTY	25-Feb-10	4885	4843.7	41.3	0.85%	601489	458655	142834	31.14%
CANBK	25-Feb-10	375.1	370.45	4.65	1.26%	1151	607	544	89.62%
PTC	25-Feb-10	111.4	109.8	1.6	1.46%	1712	900	812	90.22%
CHENNPETRO	25-Feb-10	230.75	221.8	8.95	4.04%	626	339	287	84.66%
PATNI	25-Feb-10	464.35	446.35	18	4.03%	407	194	213	109.79%
RELIANCE	25-Feb-10	1043.5	1028.95	14.55	1.41%	34623	21089	13534	64.18%
SBIN	25-Feb-10	2005.6	1980.5	25.1	1.27%	27824	18630	9194	49.35%
ICICIBANK	25-Feb-10	792.05	788.6	3.45	0.44%	29212	21524	7688	35.72%
SUZLON	25-Feb-10	75.3	73.25	2.05	2.80%	19659	13678	5981	43.73%
HDIL	25-Feb-10	318	309.3	8.7	2.81%	11773	6390	5383	84.24%
UNITECH	25-Feb-10	72.75	70.85	1.9	2.68%	14843	9601	5242	54.60%
TATASTEEL	25-Feb-10	581	553.6	27.4	4.95%	23524	18431	5093.01	27.63%
RELCAPITAL	25-Feb-10	788.6	788	0.6	0.08%	16317	11441	4876	42.62%
RELINFRA	25-Feb-10	1040	1033.35	6.65	0.64%	14572	10175	4397	43.21%
DLF	25-Feb-10	324.9	318	6.9	2.17%	16487	12426	4061	32.68%
HDFC	25-Feb-10	2353.1	2311.3	41.8	1.81%	13965	10030	3935	39.23%
ISPATIND	25-Feb-10	19.55	19.3	0.25	1.30%	5918	3307	2611	78.95%
FINANTECH	25-Feb-10	1493	1442.15	50.85	3.53%	4519	2106	2413	114.58%
DISHTV	25-Feb-10	42.4	41.95	0.45	1.07%	4118	2293	1825	79.59%
BHEL	25-Feb-10	2330.85	2323.4	7.45	0.32%	14752	13101	1651	12.60%
JPPOWER	25-Feb-10	69.8	67.75	2.05	3.03%	3454	1891	1563	82.65%
BANKBARODA	25-Feb-10	550	513.7	36.3	7.07%	2441	1059	1382	130.50%
DRREDDY	25-Feb-10	1144.05	1102	42.05	3.82%	1659	774	885	114.34%
ANDHRABANK	25-Feb-10	103.2	102.15	1.05	1.03%	1361	498	863	173.29%
SUNPHARMA	25-Feb-10	1437.65	1415.4	22.25	1.57%	1560	711	849	119.41%
HEROHONDA	25-Feb-10	1521	1521.3	-0.3	-0.02%	14120	9449	4671	49.43%
DIVISLAB	25-Feb-10	593	594.05	-1.05	-0.18%	1571	815	756	92.76%
RCOM	25-Feb-10	171.25	175.05	-3.8	-2.17%	29956	20664	9292	44.97%
OFSS	25-Feb-10	2142.25	2159.45	-17.2	-0.80%	2516	1182	1334	112.86%
BHARTIARTL	25-Feb-10	315.3	323.2	-7.9	-2.44%	34325	26741	7584	28.36%
LT	25-Feb-10	1438	1459.1	-21.1	-1.45%	19485	12718	6767	53.21%
ORCHIDCHEM	25-Feb-10	157.9	159.45	-1.55	-0.97%	3074	1480	1594	107.70%
ABIRLANUVO	25-Feb-10	850	886.1	-36.1	-4.07%	2795	1526	1269	83.16%
BANKINDIA	25-Feb-10	362.7	370.55	-7.85	-2.12%	2152	1079	1073	99.44%
HCC	25-Feb-10	131.2	132	-0.8	-0.61%	2026	1044	982	94.06%
LUPIN	25-Feb-10	1411	1417.6	-6.6	-0.47%	1289	557	732	131.42%
GTOFFSHORE	25-Feb-10	414.75	422.1	-7.35	-1.74%	1258	536	722	134.70%
DCHL	25-Feb-10	150.4	156.5	-6.1	-3.90%	1096	551	545	98.91%
IOB	25-Feb-10	94.75	100.6	-5.85	-5.82%	1105	574	531	92.51%
PIRHEALTH	25-Feb-10	338.85	348.7	-9.85	-2.82%	665	264	401	151.89%
HINDZINC	25-Feb-10	1136.2	1171.05	-34.85	-2.98%	733	347	386	111.24%
SCI	25-Feb-10	157.5	157.65	-0.15	-0.10%	441	233	208	89.27%
COLPAL	25-Feb-10	668	672.65	-4.65	-0.69%	424	226	198	87.61%
BOSCHLTD	25-Feb-10	4644.4	4734.75	-90.35	-1.91%	64	19	45	236.84%

* Provisional Data

Bulk Deals

DATE	SCRIP NAME	BUYER/SELLER	BUY/SELL	QNTY.	AVERAGE RATE
27-Jan-10	CAROLINFO	SOLUTIONS FINQUEST FINANCIAL	BUY	404000	77.26
27-Jan-10	ISPATIND	JAYPEE CAPITAL SERVICES LTD.	BUY	19630	19.99
27-Jan-10	IVRCLINFRA	M & G INVESTMENT MANAGEMENT LTD A/C PRUDENTIAL IN	BUY	1628526	323.04
27-Jan-10	POLYPLEX	ASHISH DHAWAN	BUY	111634	200.03
27-Jan-10	SREINTFIN	ASHIKA CREDIT CAPITAL LIMITED	BUY	825000	80.74
27-Jan-10	TIDEWATER	MADANLAL LIMITED	BUY	11835	4980.76
27-Jan-10	ASTECC	ATHERSTONE ENERGY AND NATURAL RESOURCES LIMITED	SELL	100000	75
27-Jan-10	CAROLINFO	BHARAT PATEL	SELL	437273	72.85
27-Jan-10	FIRSTLEASE	OBEROI DIMPLE	SELL	78218	62.45
27-Jan-10	IVRCLINFRA	THE PRUDENTIAL ASSURANCE COMPANY LIMITED A/C M & G INVESTME	SELL	1588176	321.98
27-Jan-10	TIDEWATER	21ST CENTURY MNG SER LTD	SELL	9957	4980.01
27-Jan-10	WWIL	ADROIT FINANCIAL SERVICES PRIVATE LIMITED	SELL	52651	18.34

Forthcoming Events

- ANNUAL/QUARTERLY RESULTS OF THE FOLLOWING COMPANIES DUE ON 02/02/2010

NO RECORDS

- ANNUAL/QUARTERLY RESULTS OF THE FOLLOWING COMPANIES DUE ON 03/02/2010

NO RECORDS

- CORPORATE ACTION OF THE FOLLOWING COMPANIES DUE ON 02/02/2010

Coromandel International Limited	INT DIV-RS.6/- PER SHARE
Rane Holdings Limited	INTERIM DIVIDEND
The Dhampur Sugar Mills Ltd	AGM/DIV-RS.1.50 PER SHARE
HOV Services Limited	BC DATES REVISED
HCL Infosystems Ltd	INTERIM DIVIDEND
	2ND INT DIV-RS.2/- PER SH
	PURPOSE REVISED

- CORPORATE ACTION OF THE FOLLOWING COMPANIES DUE ON 03/02/2010

Kirloskar Oil Engines Ltd.	INT DIV-RS.1.50 PER SHARE
Power Finance Corporation Limited	INTERIM DIVIDEND
Bharat Electronics Ltd	INTERIM DIVIDEND
Aarti Industries Ltd.	INTERIM DIVIDEND
Edelweiss Capital Limited	INT DIV-RS.2/- PER SHARE
Page Industries Limited	4TH INTERIM DIVIDEND
Transport Corporation of India Ltd	INT DIV-RE.0.40 PER SHARE
Hinduja Foundries Limited	RIGHTS 7:13 @PREM RS.40/-
Garware Offshore Services Limited	2ND INT DIV-RE.0.80 PR SH
Mundra Port and	
Special Economic Zone Limited	INTERIM DIVIDEND

Investment Picks

□ SCRIPT NAMES

LARGE CAP PICKS

Reliance Industries
HDFC
Maruti
Cipla
Suzlon Energy
Sterlite Industries
Jindal Steel & Power
Unitech
Adani Enterprises
Crompton Greaves

MIDCAP PICKS

Biocon
Sintex Industries
GE Shipping
Indian Hotel
PunjLloyd
IVRCL infrastructures
Texmaco
Renuka
Everonn System
Balrampur Chini
Century Textiles
Fortis Healthcare
Patel Engineering
ING Vysya Bank
IFCI
Jaysree Tea
Anantraj Industries
Prakash Industries

D I S C L A I M E R

This document has been prepared by Shriram Insight Share Brokers Ltd. and is meant for sole use by the recipient and not for circulation. This document is not to be reported or copied or made available to others. The information contained herein is from sources believed reliable. It should not be considered to be taken as an offer to sell or a solicitation to buy any security or as an official confirmation of any transaction. We do not represent that it is accurate or complete and it should not be relied upon as such. This document is prepared for assistance only and is not intended to be and must not alone be taken as the basis for an investment decision. The investments discussed or recommended in this report may not be suitable for all investors. Shriram Insight Share Brokers Ltd stock Recommendation Service is a general recommendation service and is not to be construed as an individual investor specific Portfolio Management and Advisory Service.

The user assumes the entire risk of any use made of this information. Each recipient of this document should arrive at an independent evaluation of an investment in the securities of companies referred to in this document and should consult its own advisors to determine the merits and risks of such an investment.

Shriram Insight Share Brokers Ltd shall not be responsible for any loss or liability incurred to the user as a consequence of his or any other person on his behalf taking any investment decisions based on the information, recommendations, research reports, analysis, quotes, etc. provided on the web site

Shriram Insight Share Brokers Ltd shall also not be liable for errors, omissions or typographical errors, disruption delay, interruption, failure, deletion or defect of/in the Service provided by it.

All Users of the Service in countries other than India understand that by using the Service, they may be violating the local laws in such countries. If the User chooses to access the Service from outside India, he shall be responsible for compliance with foreign and local laws.