

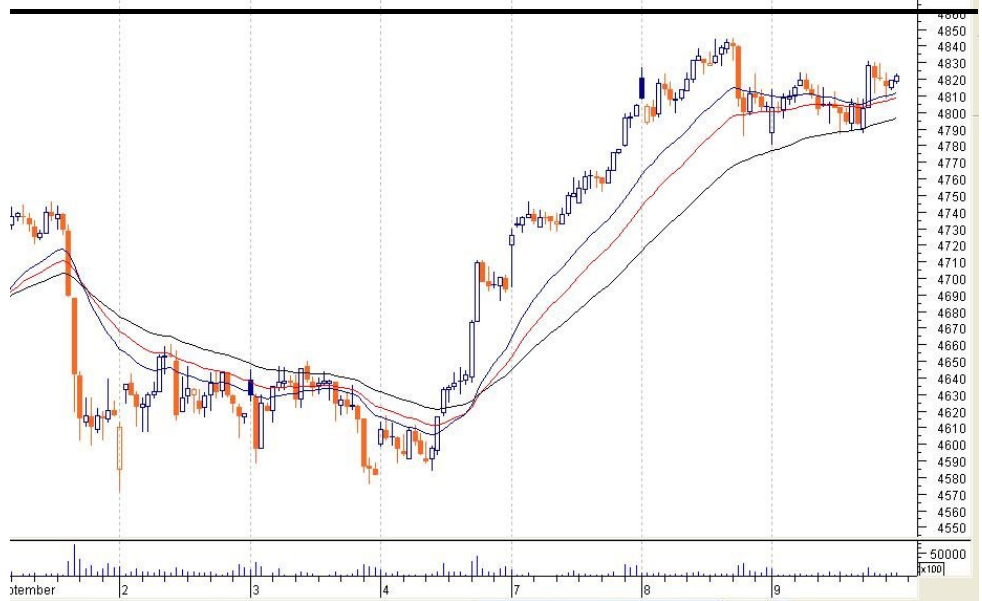


-10TH Sep 2009

Nifty Daily Watch

Market Data(5P.M IST)

Index	Close	Point Change	% age Change
BSE Sensex	16183	+59	+0.37%
NSE Nifty	4814	+9	+0.19%
S&P 500	1025	+8.9	+0.88%
Dow Jones	9497	+56	+0.59
NASDAQ	2037	+35	+1.79%
FTSE	4975	+28	+0.57%



DAILY NIFTY CHART:

	LTP	S3	S2	S1	R1	R2	R3
NIFTY	4805	4680	4722	4770	4855	4900	4925
SENSEX	16123	15750	16000	16150	16250	16600	16900

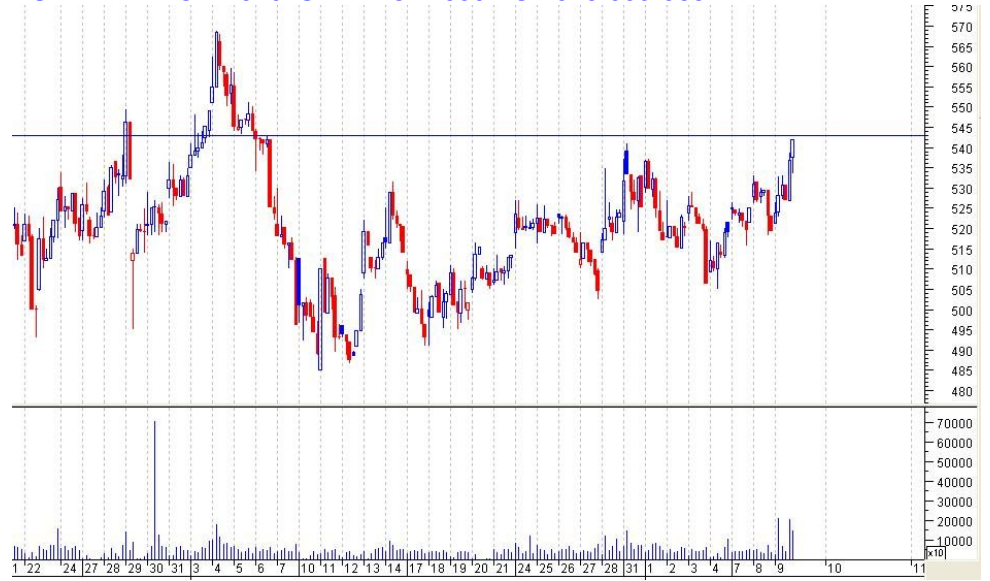
commentary:

Indian market continued the volatile session; having positive global cues and sustained buying over some of the heavy-weights enabled the indices to close in the positive zone. SENSEX closed at 16183, up 59 points and Nifty at 4814, up 9 points from the previous close. CNX MIDCAP index was up 0.03% and BSE SMALLCAP index was up 0.06%. Top gainers included RIL, HINDALCO, JPASSOCIATES, HDFC, HDFCBANK and PNB while the top losers are listed as DLF, BHARTIARTL, HEROHONDA, WIPRO, RCOM, BPCL, JINDALSTEL, and POWERGRID. In the next session 4770 and 4855 would be the trend deciding levels for NIFTY; moving either side may decide the direction of market (intraday). Traders are suggested to trade in selected stocks and keep eye on NIFTY levels. Certain stocks like SBIN, BANKINDIA, AXISBANK, RELCAPITAL, RELINFRA, HDIL, PNB, JPASSOCIATES, GMRINFRA, APIL, ALBK, ACC and OPTO CIRCUIT may show some bullish run whereas some others like BHARTIARTL, BPCL, WIPRO, TATACOMM, BHEL, ABB, M&M, MARUTI and STERLITE may remain red.

TRADING STRATEGY

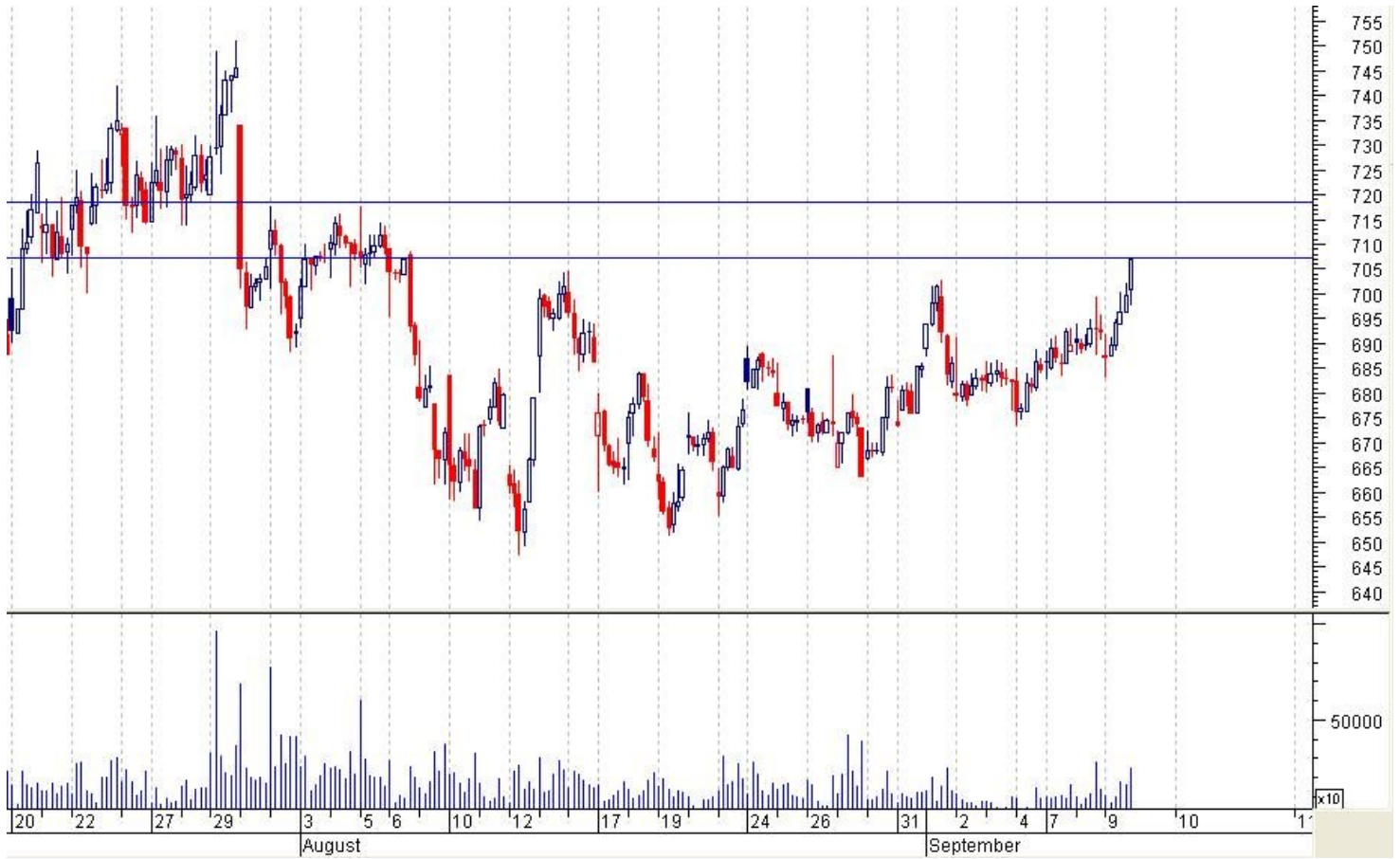
ALSTOM PROJECTS INDIA LTD

BUY APIL ABOVE 540 SL BELOW 530 TGT 548-553-568



PUNJAB NATIONAL BANK

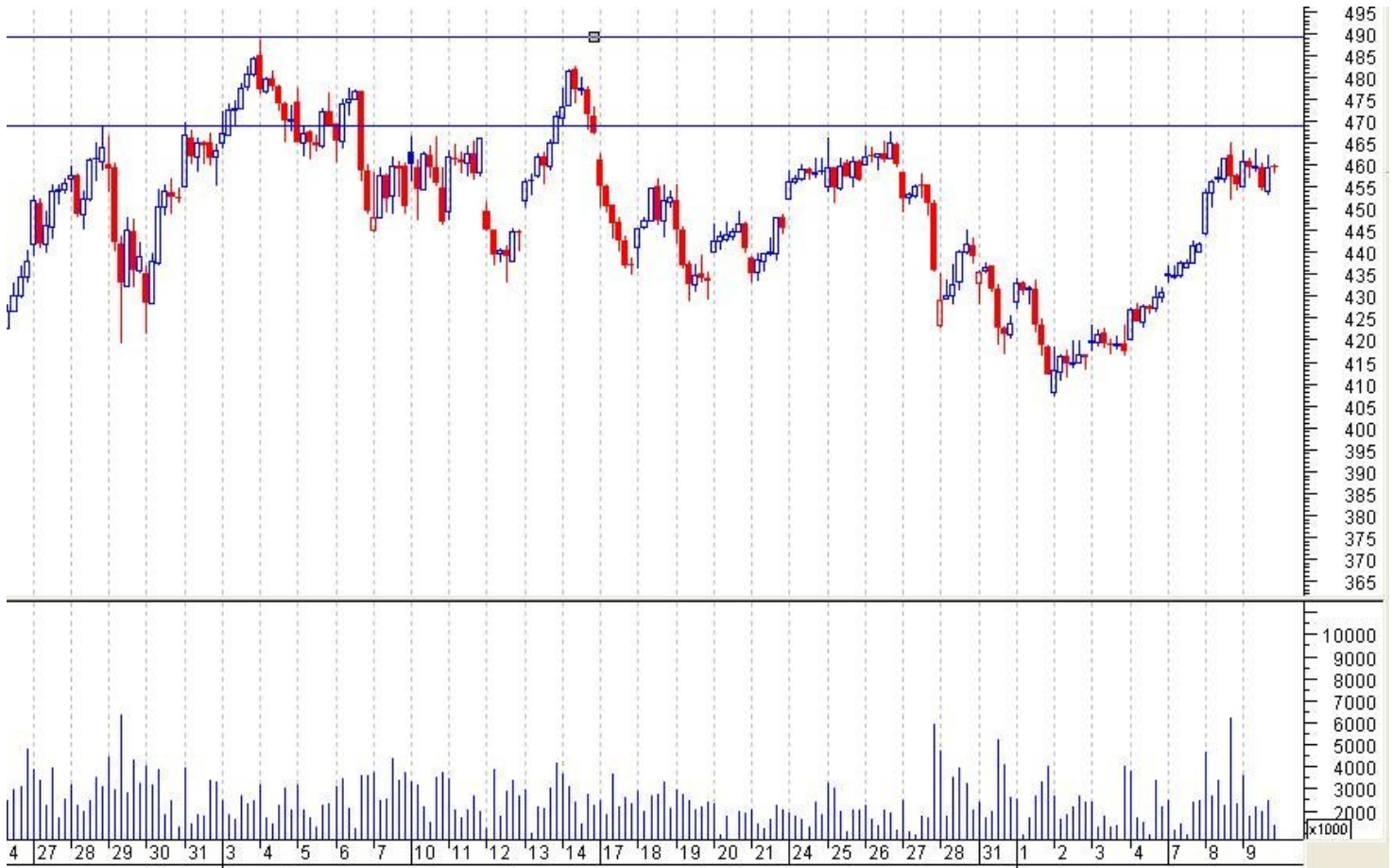
BUY PNB @CMP NEAR 700 SL BELOW 688 TGT 710-718-725



MINDTREE

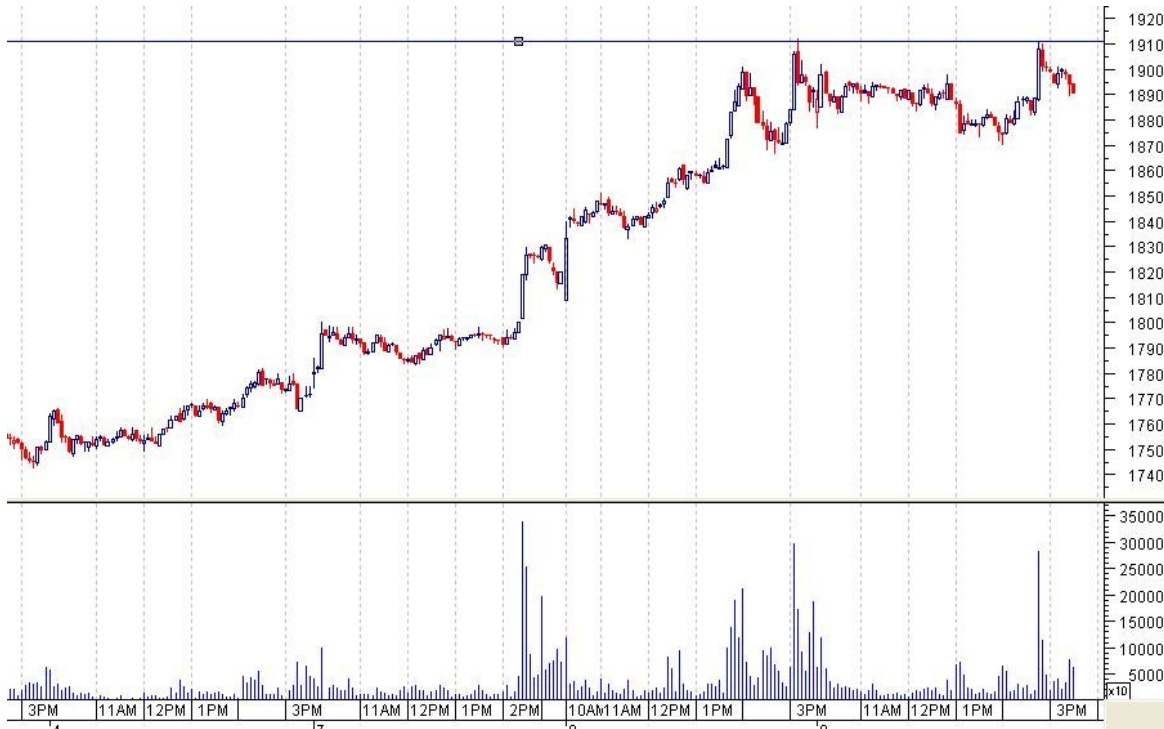
TATASTEEL

BUY TATASTEEL ABOVE 465 SL BELOW 457 TGT 471-476-483



STATE BANK OF INDIA SEPTEMBER FUTURE

BUY SBIN FUTURE ABOVE 1913 SL BELOW 1890 TGT 1934-1955-1980



Follow ups:

BHEL FUT BUT CALL GIVEN ABOVE 2260 TGT 2290 MADE A HIGH 2292.

MINDTREE BUY CALL GIVEN ABOVE 554 TGT 566 MADE A HIGH 569.

RELINFRA AND SBIN BUY CALL NOT EXECUTED.

The document is for information purposes only and ought to be construed as an advice on investment or any daily news letter 10TH SEP 2009 : : : daily report other subject, neither be construed as an offer or solicitation for the purchase and sale. It is based on information available in the public domain and compiled from the sources believed to be reliable, though we have not independently verified its authenticity, accuracy or completeness and as such do not make any representation to effect and opinions given herein based on such information ought to be taken in this background. For the information, statements and opinions given, made or expressed herein or from any omission here from, neither Fairwealth Securities Pvt. Ltd., its directors, officers, employees, subsidiaries, affiliates and accept any responsibility of whatsoever nature, nor shall they be held liable in any manner for the consequence of any action taken by you based on the information opinion contained herein. You are advised to take informed decisions in consultation with an independent advisor. Fairwealth Securities Pvt. Ltd., its directors, officers, employees, subsidiaries, affiliates and associates may have a position in any of the equities cash & futures mentioned in this report.

FAIRWEALTH SECURITIES